

Spring 2002

## NEIU Magazine- Spring 2002

NEIU Magazine Staff

Follow this and additional works at: <https://neiu.digitalcommons.edu/neiumag>

---

### Recommended Citation

Staff, NEIU Magazine, "NEIU Magazine- Spring 2002" (2002). *NEIU Magazine*. 3.  
<https://neiu.digitalcommons.edu/neiumag/3>

This Book is brought to you for free and open access by the Publications at NEIU Digital Commons. It has been accepted for inclusion in NEIU Magazine by an authorized administrator of NEIU Digital Commons. For more information, please contact [neiu.digitalcommons@neiu.edu](mailto:neiu.digitalcommons@neiu.edu).

SPRING 2002

# NORTHEASTERN ILLINOIS UNIVERSITY

M A G A Z I N E

Enhancing Teaching and Learning with Technology



Discovering Your Next Career



Geology Grad Student Digs Her Job



Campus News



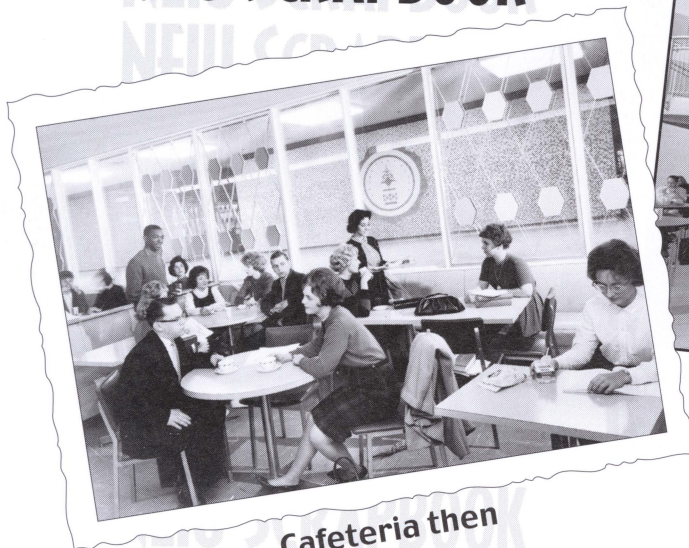
Class Notes



HOME



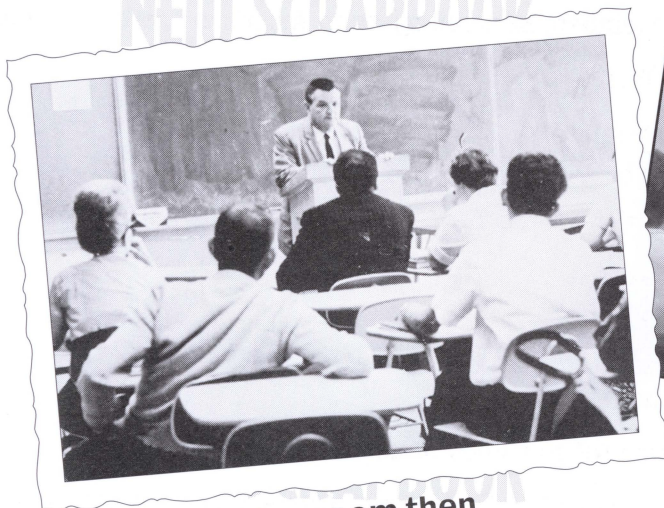
# NEIU SCRAPBOOK



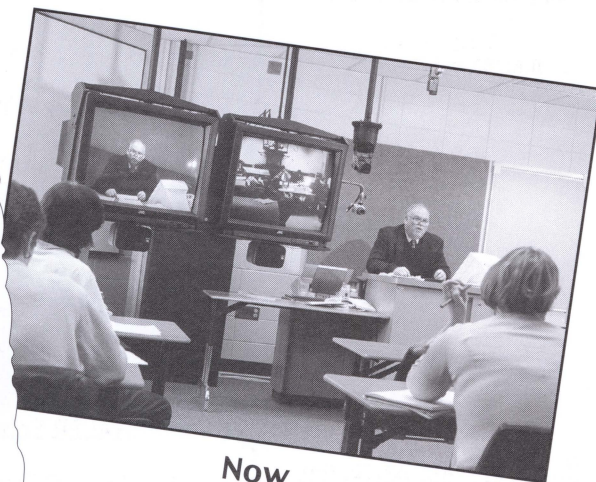
Cafeteria then



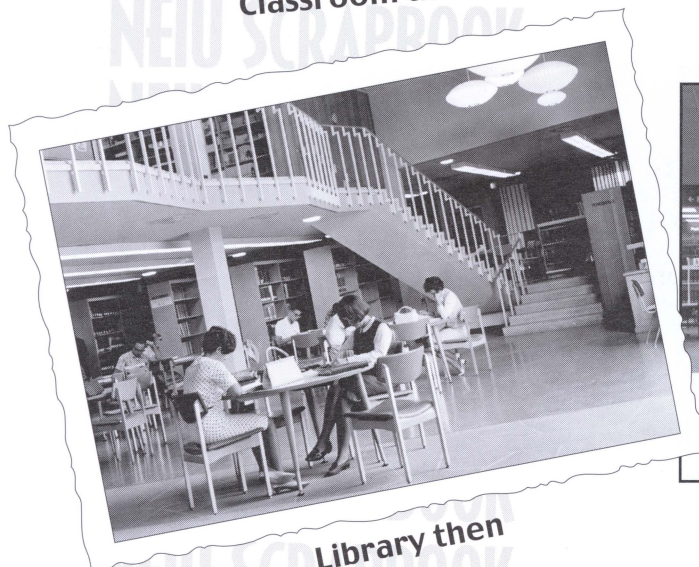
Now



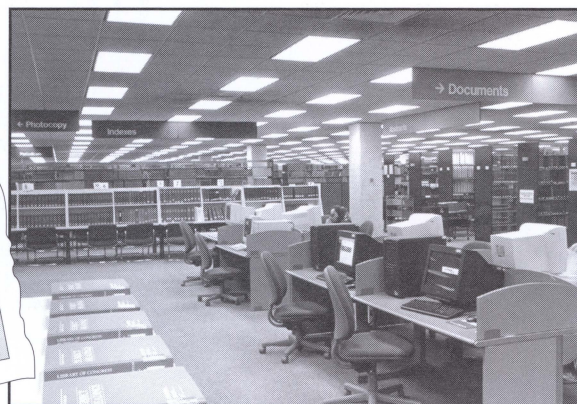
Classroom then



Now



Library then



Now

## NEIU MAGAZINE STAFF

### Editorial:

**Terry M. Bush,**  
Executive Director,  
Marketing & Communications

**Erika M. Malek,**  
Director of Media Relations

**Lisa D. Cooper,**  
B.S. '90 and M.B.A. '99,  
Director of Alumni Affairs

**Terry Katz,**  
B.A. '80 and M.A. '85,  
Director of Publications

### Graphic Design:

**Brian Harms,**  
Supervisor of Graphic Design

**Mardy Sikat,**  
B.A. '82,  
Graphic Designer

**Joe Davis,**  
Photographer

## UNIVERSITY ADMINISTRATION

**Salme H. Steinberg,**  
President

**Joyce Hieshima,**  
Acting Provost and Vice  
President for Academic Affairs

**Melvin C. Terrell,**  
Vice President for Student Affairs

**Mark Wilcockson,**  
Vice President for Finance  
and Administration

*The Northeastern Illinois University Magazine is published four times a year by the university for graduates, donors and friends. Please send your comments, suggestions and news items to the Alumni Office, Northeastern Illinois University, 5500 N. St. Louis Avenue, Chicago, Illinois 60625-4699.*

Recycled Paper • Soy Ink

## FEATURES

- 1 Enhancing Teaching and Learning with Technology
- 3 Discovering Your Next Career
- 4 Geology Grad Student Digs Her Job

## CAMPUS NEWS

- 5 President Steinberg Honored by Asian American Coalition of Chicago
- 5 NEIU Vice President Co-authors Book
- 5 El Centro and ASPIRA, Inc. Establish Partnership to Provide Education to Latino Youth
- 5 NEIU Foundation Elects New Board President
- 6 NEIU Hosts International Conference on the European Union Enlargement Process
- 6 NEIU Partners with Ronald McDonald House Charities/HACER Scholarship Program
- 6 Annual Fund Off to a Good Start
- 6 Criteria Expanded for the Brommel Scholarship for Doctoral Studies

## CLASS NOTES

- 7 1965-1988
- 8 1989-2001
- 8 In Memoriam



# ENHANCING TEACHING AND LEARNING WITH TECHNOLOGY

BY TERRY M. BUSH, *Executive Director, Marketing and Communications*

Information and communications technologies have had a tremendous impact in the field of education. Teachers today have access to a remarkable arsenal of hardware and software: scanners that can reproduce still images, text, and 35mm slides; printers that can render those images in full color; software to develop presentations, design web pages, create or edit graphics, record CDs, capture and edit video images.... All of this – and more – is available on the computer that resides on the desktop.

Technology has, quite simply, changed teaching and learning.

Classroom learning researchers once described the role of the teacher as a dispenser of rewards and punishments. Later, teachers were considered a dispenser of information. Today, they are guides for exploring academic tasks. The role of the learner has undergone a parallel evolution from the recipient of rewards and punishments, to the recipient of information, to an active participant in a world of information. Students accustomed to surfing the Internet for learning resources are discovering the freedom that comes with choosing information sources.

Over the last several years, technology planning at Northeastern has led to much discussion of the best way to match learning technology with the needs of NEIU students. The University has consciously chosen a model that blends the best of traditional instructional methods with technology that is appropriate and relevant. Technology Enhanced Learning, as it has been labeled, is proving to be a very effective model to support teaching and learning.

## Access is Key

Computers reside on just about every desk in every office in America. The ability to use word processors, spreadsheets and databases is an unwritten requirement of many (if not most) jobs in today's workforce. The rules for success are simple: those who know how to obtain and analyze information are more likely to make learning part of their daily routine and thus are more likely to succeed in the Information Age. Those who have limited access to computers, or no access, will fall behind even more.

Northeastern provides student access to technology for both general and highly specialized uses.

The University's general-purpose computer labs currently house about 300 machines for student use. One hundred



more will be available when a computer lab in the newly remodeled B Building opens this fall. The labs provide all NEIU students with access to e-mail, word processing, and spreadsheet software.

NEIU's specialized computer labs support a variety of functions. Students in graphic design classes get state-of-the-art instruction in the computerized design lab. In the piano lab, students perform on electronic keyboards. The instructor can talk directly to the students via their headphones, providing the immediate feedback and reinforcement that is essential to learning. Other specialized computer labs support audio and video editing, cartography and foreign language instruction.

## Classroom Strategies for Enhanced Learning

In the classroom, faculty have convenient access to technology that facilitates the teaching and learning experience. Several classrooms have been renovated in recent years to house video and data projection, document presenters, VCRs, video slide projectors, CD/DVD/Laserdisc players, and audio cassette players. Special computer carts make it possible for any teacher to bring the technology into the classroom.

The technology is the difference between hearing about a subject and actually experiencing it, making learning an active process that more directly involves the student in the construction and application of knowledge.

But the impact of technology reaches far beyond the teacher in the classroom.

While today's students still have many opportunities to interact with faculty outside of class time, students can now also e-mail questions to their teachers. The technology enables the students to ask a question when it arises, while it is still fresh in their minds.

Essential course materials – syllabi, handouts, and lists of supplemental readings – are now posted on faculty web pages where they can be downloaded or printed by the students whenever needed. And exam scores can be posted to faculty web pages as soon as the grading is complete.

## Interactive Television Expands Opportunities

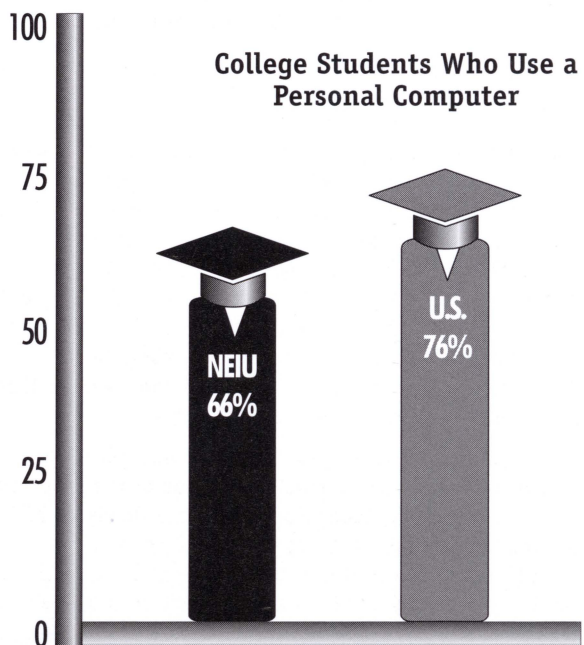
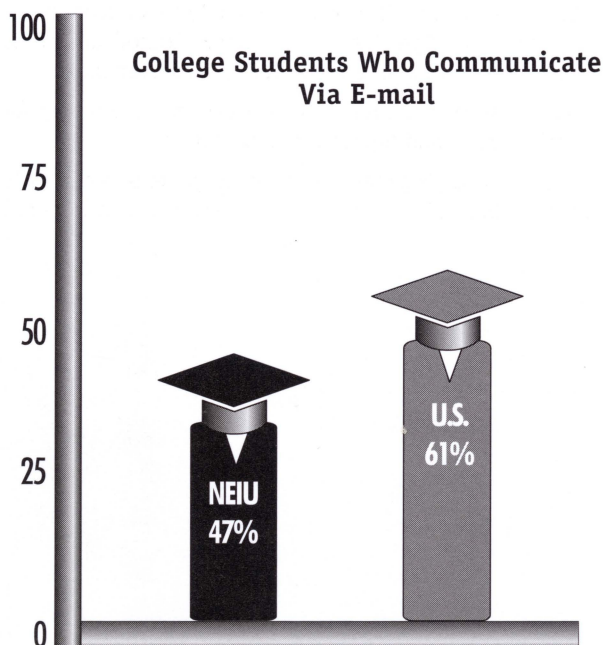
Interactive television is two-way communication between a teacher and student separated by a geographical distance.

NEIU now operates four fully equipped interactive television network sites – two on the main campus, one at the Center for Inner City Studies and one at the Chicago Teachers' Center. Through memberships in a number of consortia and professional organizations, NEIU's distance learning classrooms can connect to 69 sites throughout the state, providing opportunities to interact with students and faculty from a number of institutions. Classes offered over the network add a certain level of comfort that results from students and faculty able to see each other even though they are sometimes hundreds of miles apart.

## Meeting Needs on Several Levels

Use of teaching and learning technology has grown dramatically at NEIU in just the last year. Technology Enhanced Learning has proven to be a good model to meet the needs of Northeastern students who tend to use computers and e-mail somewhat less than the national average (see chart below).

The University is providing students with access to computers and encouraging their use, giving students the skills essential to success in the Information Age. This appropriate and relevant technology, blended with traditional instructional methods, is helping Northeastern students grow and succeed.



Source: NEIU Office of Institutional Studies and Planning

# DISCOVERING YOUR NEXT CAREER

BY DR. DAVID P. HELFAND

Maybe you're finding yourself thinking of a career change, perhaps for *internal* reasons, those that are up to you, such as changing interests, new priorities, or current job and/or supervisor dissatisfaction. Or maybe your motivation is for *external* reasons, those up to someone else, such as being downsized, laid off, fired or other related dilemmas. Even though you realize that you might be dissatisfied with your current work situation, you may not be clear on what to do about it or even what new career to pursue, if considering that option.

Good career decision-making involves the combination of self-awareness (knowing your strongest interests, skills, personality preferences and values) and career awareness (how your particular set of personal criteria translates into career options and what those careers involve as far as education, training, experience and/or skills required, job duties, places of employment, job market outlook, benefits and related information).

I've experienced many adults in career transition who know they're unhappy in their current position but often feel somewhat ashamed for not knowing exactly what career to pursue when considering a possible change. After all, they say, how can anyone at age 30, 40 or older not know what they want to do career-wise? This type of confusion is often due to changing interests and values related to adult developmental transition periods, especially the Age 30 Transition and Mid-Life Transition at around age 40. Even when one is clear about their interests, values and related personal criteria, they still may not know how that translates into career options. With so many possibilities to choose from, it's no wonder that many potential career changers feel confused.

I spend the majority of my time as a career counselor helping traditional college age students and adults identify relevant career options. Here's the approach I've found *most* effective, *most* often. I believe when someone is trying to identify a career to pursue (whether a first career or a change) they need to look at all areas of their lives for clues. In an exercise that I call an Analysis of Life Experience (AOLE), clients identify enjoyable experiences where they also felt a sense of accomplishment. The areas to consider include education (activities both in and out of the classroom), work (even though a job may have been somewhat dissatisfying - there may have been projects or activities at one time or another that were enjoyable to you and gave you a sense of accomplishment), family, leisure (activities you tend to do on your own), and social (activities you tend to do with others). There are techniques to aid clients in generating this list of life experiences.

On the average, clients identify 20 to 40 experiences. The next step is to prioritize this list of experiences according to which the client enjoyed the most. Once this is completed, we focus in on the top 10 to 12 experiences and ask these questions: "Why are these experiences rated so highly, what interests are involved, skills used, values reflected, and personality preferences exercised?" These become the *nuts and bolts* for formulating career ideas. Usually four or five (or more) career ideas are suggested based on the information generated from the exercise.

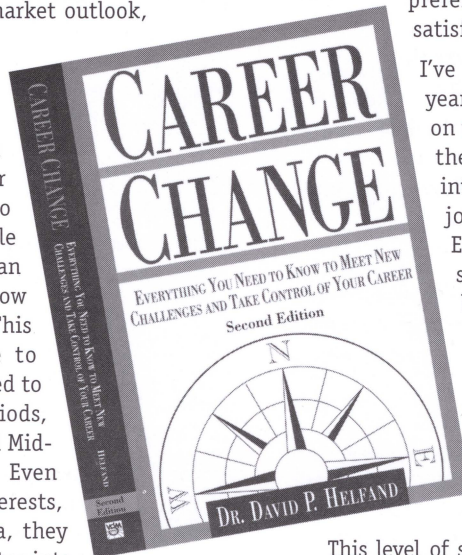
What I like to add to the process, at this point, are two well known inventories. The Strong Interest Inventory (SII) compares your interests to those of satisfied workers in 110 jobs and tells you who you're most similar to. The Myers-Briggs Type Indicator (MBTI) which serves a similar function to that of the SII, but with regards to personality preferences, compares yours with those of satisfied workers in 208 jobs.

I've been using this approach now for 15 years. On a highly frequent basis, the jobs on the two inventories whose workers score the highest (in similarity to the client's interests/preferences) are the very same jobs that we generated from the Life Experience Exercise. This usually has a strong impact on the client. It's like a light bulb blinking "you're on the right track." It's a powerful one (the AOLE), two (use of two key inventories; the SII and the MBTI) *punch*. Often testing alone can leave one "hanging" - but it's been my experience that when used in conjunction with the AOLE, it can have greater clarity.

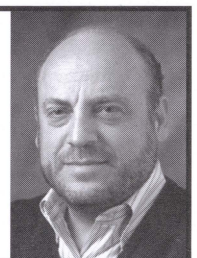
This level of self and career awareness helps to lessen the fear of change/failing that often afflicts potential career changers. The more you can make the unfamiliar (new career and skills required) familiar (knowledge of skills required and to what degree you fit), the more you'll be able to cope with, and rise above, your fears.

If you think you'd like to pursue a process like this to help clarify your career goals, contact the counseling office at 773-442-4650 to schedule an appointment.

Remember, a well-chosen career can have a highly positive impact on your life. Good luck in **discovering your next career!**



David Helfand is the coordinator of career counseling at Northeastern Illinois University and author of *Career Change: Everything You Need to Know to Meet New Challenges and Take Control of Your Career*, selected as a Top Ten Career Book for 1999 by Joyce Lain Kennedy, *Los Angeles Times* Syndicate career columnist and author.



# GEOLOGY GRAD STUDENT DIGS HER JOB

BY CHUCK STANLEY, *Freelance writer whose work has appeared in the Chicago Tribune*

Killian Walsh, a Northeastern graduate student in geology, had an interesting office this past fall. She was the only woman on a British drilling rig located several miles out in Lake Michigan.

She was working for Seacore Ltd., a marine drilling firm based in Cornwall, England. It had been contracted by the Chicago Water Department to investigate the lakebed as part of a project to extend water intake tunnels nine miles from shore.

"Seacore does almost all the major marine drilling in the world," Walsh said. The drilling work was done aboard a movable Skate 3 jack-up platform. "It looks like an oil rig platform but you can jack it up in deep water to do marine investigation," Walsh explained.

The platform was moved along the route of the proposed water intake tunnel so it could sink 27 bore holes more than 400 feet deep through sand, gravel, clay and rock. As the borings came up Walsh would analyze them, record their various characteristics and bag them.

"What we were doing was delineating the bedrock to determine where to place the tunnel actually in the bedrock," Walsh said. "Once the route is determined they will use a one-way tunnel-boring machine like they did on the tunnel between England and France."

Walsh worked with the 8:00 p.m. to 8:00 a.m. shift, commuting to and from the platform aboard a Zodiac inflatable boat flying the Union Jack. "The Zodiac is a little motor-propelled boat and when you are standing up in it flying over the waves for several miles it can be quite a wild little ride," Walsh said.

The drilling went on around the clock with little regard for weather and lake surface conditions. "These British guys will keep going though any situation," Walsh said. "We worked through electrical thunderstorms and anything else you can think of."

Tough as her crewmates were, there also were refreshing cultural differences. "In Chicago, drillers are usually biker kind of guys, so this was the first time I'd ever had a driller say to me 'Would you like a cup of tea, love?'" Walsh recalled with a laugh.

After the terrorist attacks of September 11<sup>th</sup>, the crew's heartiness made no difference in the face of a sudden security clampdown. The British crew members were, after all, foreigners, and their proximity to the fresh water intake apparatus for much of Chicagoland was a matter of serious concern for the authorities.

"Basically we were just shut down for two weeks," Walsh said. "We had to be fingerprinted, we had to have F.B.I. checks, and when we were allowed to start up again we were escorted in and out every day. Due to 9/11, the project, which was supposed to end in October, ended up going into Thanksgiving."

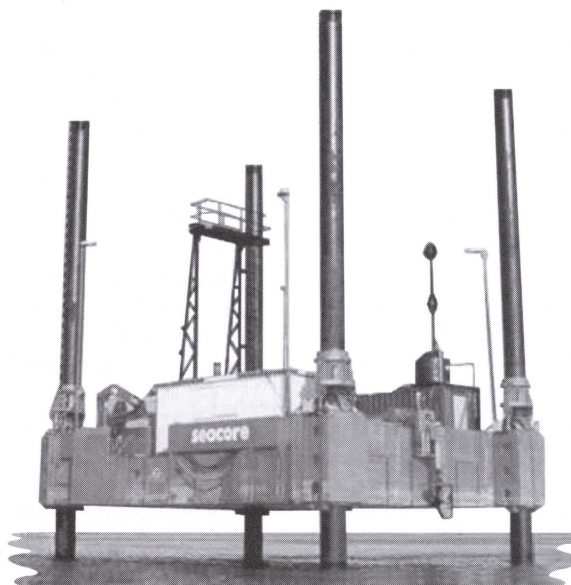
While Walsh's personal experience is unique, her status as a working professional in the NEIU geology program is not unusual. Like many of the program's students, she has been a working geologist for several years. A graduate of Webster University in Missouri, Walsh, 48, had been working in the design industry importing Italian furniture and doing technical lighting before deciding to switch careers. "When I started at Northeastern nine years ago I had to back up and take my undergraduate requirements before starting on graduate work six years ago," Walsh said. "But I knew exactly where I wanted to go and that was regulatory geology."

"Most of our students are already working and they come in to take classes," said Professor Laura Sanders, coordinator of the department of earth science. "Where they're working is mainly in the environmental industry, and Killian is one of those."

"One of the most wonderful experiences that I've had in teaching the graduate program is in a course where we did a sort of seminar approach and we'd be sitting in a circle and discussing an article from a scientific journal and one student would say 'Well, I had a situation like that in the field two years ago' and then another would say 'Well, have you heard of the new technology we're using, I just did a project last week that involves that.' It was a wonderful exchange of ideas."

"[The program] is pretty big for other geology programs in the area," Sanders said. "It's much bigger than what they have at Northwestern or the University of Chicago and maybe about the same as at the University of Illinois in Chicago."

If you would like more information about the graduate program in geology, please contact Karen Bartels, assistant professor of earth science, at 773-442-6052, or e-mail her at [k-bartels@neiu.edu](mailto:k-bartels@neiu.edu).



Skate 3 Jack-up platform



# CAMPUS NEWS



## President Steinberg Honored by Asian American Coalition of Chicago

Northeastern President Salme Harju Steinberg recently received the Grand Asian Award at the Asian American Coalition of Chicago's 19<sup>th</sup> Annual Lunar New Year Celebration. She is the first educator and non-elected official to receive this award.

Approximately 2000 people attended the celebration, "Synergy Through the Winds of Change." The Grand Asian Award is bestowed upon a person of non-Asian descent who has made significant contributions to the Asian American community.

The Grand Asian Award honors President Steinberg's leadership in establishing relationships between NEIU and the Asian community in Chicago. President Steinberg said upon receiving the award, "Together we will bring heightened awareness and knowledge of Asian contributions to our diverse community."

## NEIU Vice President Co-authors Book

Melvin C. Terrell, NEIU vice president for student affairs, has co-authored the book *How Minority Students Experience College, Implications for Planning and Policy*. The book offers a unique qualitative study involving seven colleges and universities considered national models of commitment to diversity. It presents the views and voices of minority students on what has been achieved and what remains to be done.

Direct quotations from Black, Hispanic, Asian, Native American and bi-racial students form the core of the book. The students communicate their perceptions of campus cultures and practices, the tensions they encounter and what works for them.

The book can be ordered through [www.styluspub.com](http://www.styluspub.com).

## El Centro and ASPIRA, Inc. Establish Partnership to Provide Education to Latino Youth

El Centro, NEIU's Latino outreach center, and ASPIRA, Inc., a non-profit organization devoted to education and leadership, have announced the establishment of a formal partnership for the benefit of Chicago's Latino population. The goal of both El Centro and ASPIRA is to provide students with an education that will enable them to succeed in American society.

ASPIRA, Inc. of Illinois currently has 150 students enrolled in its alternative high school. It is home to strong community outreach programs aimed at helping youth and adults with the college and job search process. The agreement will enable ASPIRA's graduates to make a smooth transition to college by going on to pursue a degree from Northeastern.

## NEIU Foundation Elects New Board President

Dr. Aron Farrel Stein, Abbott Laboratories divisional vice president for the hospital products division, was recently elected president of the NEIU Foundation Board of Directors. The Foundation, the fundraising arm of Northeastern, assists the development and betterment of NEIU through the encouragement, acceptance and administration of charitable donations given expressly for use by the University in pursuing its educational program goals.

Stein has provided strategic direction for all drug, biologic and device development programs for the hospital products division at Abbott Laboratories since 1999. Prior to that time, he held the position of vice president and corporate officer at SEQUUS Pharmaceuticals, Inc. in California. Stein earned his B.S. in biomedical science and Ph.D. in toxicology from Texas A&M University.

## Northeastern Hosts International Conference on the European Union Enlargement Process

In February, NEIU hosted a two-day conference titled "The New Central Europe: The Challenges and Opportunities of the European Union Enlargement Process." Organized to increase awareness of European issues, the conference generated discussion and dialogue about economic and political opportunities for both the European Union and Central European countries.

Honored guests included representatives from the German, French, Lithuanian and Polish consulates and the Spanish trade commission in Chicago, as well as six students from the University of Warsaw.

Lukasz Dobrzynski, NEIU junior and international honors student from Poland, organized the conference as an extension of an international conference held last April in Warsaw-Cracow, Poland where he presented his paper "New NATO Members – Opportunities and Challenges for Peace, Security, and Stability in Europe."

## NEIU Partners with Ronald McDonald House Charities/HACER Scholarship Program

In January, Northeastern announced a partnership with Ronald McDonald House Charities (RMHC)/Hispanic American Commitment to Educational Resources (HACER) Scholarship Program. The program provides financial support to Hispanic students committed to pursuing post-secondary education.

NEIU, a Hispanic Serving Institution, has maintained close links with the Hispanic community for many years. Through the partnership with Northeastern, RMHC/HACER will be able to assist a larger number of students.

"The scholarship program increases the educational opportunities for Latino students. Our association with the RMHC/HACER program is an important step," said President Salme H. Steinberg.

Juan Mendez, member of the NEIU Board of Trustees added, "We are very pleased with the support of Northeastern in our efforts to help our students when it is mostly needed, at the beginning of their college studies."

## Annual Fund Off to a Good Start

Last October, Northeastern Illinois University launched its first annual fund campaign with an appeal sent to all 50,000 NEIU alumni. By mid-February, 750 donors had contributed nearly \$45,000. Contributions were generally earmarked for scholarships or for the University's greatest need.

The contributions of alumni are an important source of support for NEIU. Like

most public universities, Northeastern is not fully funded by state tax dollars or by tuition and fee revenue.

The 2001 – 2002 annual fund campaign continues through the end of the fiscal year on June 30. Thanks to all of you who supported the annual fund this fall.

## Criteria Expanded for the Brommel Scholarship for Doctoral Studies

In the winter issue of the *NEIU Magazine*, we introduced Dr. Bernard Brommel's scholarship to fund doctoral studies. The eligibility criteria for the scholarship have since been expanded to include students who have earned a master's degree in any discipline from NEIU's College of Arts and Sciences.

To qualify for Dr. Brommel's scholarship to fund doctoral studies, you:

- must have completed an NEIU bachelor's degree in the College of Arts and Sciences or the College of Education and received a master's degree from another

institution; **or** received an NEIU master's degree in the College of Arts and Sciences or the field of counselor education.

- must desire to complete a Ph.D. in any field.
- must be a first or second year student in a doctoral program accredited by the North Central Association or equivalent Ph.D. accrediting agency.

Anyone meeting those criteria is encouraged to apply. Contact Michelle Morrow, director of scholarships/retention, at 773-442-4606 for application forms or more information.

# CLASS NOTES

## 1965

**Sharon Glassner** (B.A. Elem. Ed.- Anthropology, M.A.S. '70 Special Ed.-Soc.) received the 2000 Studs Terkel Humanities Service Award in honor of her work with children of all backgrounds. She was nominated by the mayor of Skokie. She is a special education art teacher at the Challenger Bridgeview Therapeutic Day School in Niles.

## 1966

**Lawrence Chase**, Ed.D. (B.A. Elem. Ed.- History) is assistant professor of elementary education in the department of teacher education at NEIU. Prior to this appointment, he was principal of Walt Disney Magnet School in Chicago.

**Kenneth Gill** (B.A. Elem. Ed.- History) retired after 35 years of teaching in the Chicago Public School system. He is currently co-host of the "IPA Radio Show" on WPNA 1490 AM.

## 1967

**Vicki (Comm) Goldberg** (B.A. Early Childhood Ed.) is a service manager at Kelly Services, Inc. in Skokie.

## 1971

**William Torp** (B.A. Sec. Ed. - History) was appointed sole assessor of Town of Big Flats, the fastest growing community in western New York State. He received his M.A. from Dartmouth College.

## 1972

**Jules Beuck** (B.A. Psychology) is the risk management coordinator at Patton State Hospital in Patton, CA. He and his wife, Rose, host a monthly entertainment column entitled "B Notes" in *Dabelly.com* online magazine.

**Marianne Zeh** (M.A.S. Special Ed.- Soc.) is the founder and director of the Schaumburg Academy of Music in Schaumburg. She is a member

## A COLLEGE EDUCATION IS A FAMILY AFFAIR

*Can you imagine putting both of your children through college at the same time you're attending? Two NEIU alumni did just that! Husband and wife, Fernando and Maria Gracia, enrolled at Northeastern in 1991 and were soon followed by their two daughters, Frika and Kalinka. They've all graduated and are proud of their family tradition here at NEIU. For their outstanding commitment to education and family, the Gracia's were honored this fall at La Noche de la Familia, NEIU's Hispanic Heritage Month event celebrating family unity.*



(left to right)

**Kalinka Gracia**  
(B.A. Speech, 1998)

**Fernando Gracia**  
(B.A. Speech, 1995)

**Maria Gracia**  
(B.A. Speech, 1996)

**Frika Gracia**  
(B.A. Political Science and Speech, 1997)

of the National Guild of Piano Teachers, Northwest Suburban Music Teachers Association, and the American Guild of Organists, and has been teaching music since 1965.

## 1973

**Vicki Baba** (B.A. Sec. Ed. - Art) is deputy director of human resources and development at the Illinois Student Assistance Commission in Deerfield.

## 1975

**Donna (Stout) Fraser** (B.A. Art) was awarded the 2001 Middle School Counselor of the Year for Orange County, FL for her work with severely emotionally disturbed students. She has been working for the Orlando School System since 1997.

## 1976

**Howard Nodell** (B.A. Mathematics) is a principal staff engineer at Motorola in Arlington Heights.

**Eileen (Thuna) Stern** (B.A. Sec. Ed.- Spanish) is a Spanish teacher at the Hutchinson School in Memphis, TN.

## 1977

**Jeffrey Grabelle** (B.A. Psychology) is an office manager/program administrator at AIDS Action in Baltimore, MD. He is also an early music musician playing the viola da gamba, an instrument used during the 16<sup>th</sup>, 17<sup>th</sup> and 18<sup>th</sup> centuries.

## 1978

**Mary Kay O'Leary** (B.A. Environmental Studies) is an environmental engineer for the U.S. Army Corps of Engineers and for ComEd in Chicago.

## 1980

**Terry Katz** (B.A. B.O.G., M.A. '85 Guid. and Counseling) is director of publications for NEIU. She supervises the graphic design staff and is responsible for all major university publications, brochures and flyers.

**Bayani Legaspi** (M.A. Guid. and Counseling - Voc.) was selected regional finalist for the 2001 Nursing Spectrum's Nurse of the Year Award. He is the first Filipino and Asian American to be selected. He is a 20-year public health nurse veteran with the Chicago Department of Public Health.

## 1981

**Ezra Cohen**, D.C., C.M.T. (B.A. Psychology) is a clinic director, senior staff physician, chiropractor, and massage therapist at the National University of Health Sciences in Woodridge.

## 1982

**Richard Burns** (B.A. Bus. and Mgt.) is senior vice president at Fidelity Federal Savings Bank in Chicago. He is responsible for management of the bank's newly formed commercial lease finance operation.

## 1983

**Lisa Ann Schreier** (B.A. Bus. and Mgt.) is a timeshare sales associate at the Silver Lake Resort in Orlando, FL. She also has her own business, GRQ Enterprises, working as a marketing and communications consultant.

**Sharon Thiese** (M.A. English) is the co-author of *Reading and Writing Across the Content Areas*. She was also nominated for Geneva High School's Teacher of the Year Award.

**Lance Welter** (M.A. Speech) is a sales mentor at Object Mentor in Vernon Hills. Object Mentor provides high quality training, design consulting, mentoring, and development services to the international software community.

## 1984

**Matthew Johnson** (B.S. Management) is a professional affairs executive at Abbott Laboratories in Arizona and has completed his M.B.A. at the University of Phoenix.

**William Kohnke** (B.S. Finance) is an operations manager at Options Clearing Corporation in Chicago.

**Jude (Cardwell) Sandusky** (B.A. Psychology) received her M.A. in teaching from Bellarmine University in Louisville, KY and will be receiving her special needs certification as well. She is a special needs teacher at the Binet School.

## 1985

**Barbara (Plachetka) Polston** (B.S. Marketing) is director of development at Aid to Adoption of Special Kids in Phoenix, AZ.

## 1987

**Jeffrey K. Edwards** (B.A. U.W.W.) was awarded a sabbatical beginning this fall to work on a book on current practices of counseling and psychotherapy in the U.S. He is currently a professor of counselor education at NEIU.

**Olawale M. Idreez**, Ph.D. (B.S. Accounting) is the managing editor of the *Africa Monthly*, a newspaper published in Chicago.

## 1988

**Clyde Colgrove** (M.A. Comm. College Admin.) has retired as executive director of the City Colleges of Chicago.

**William Tong** (M.S. Earth Science) is an environmental scientist with the U.S. Protection Agency - Region 5 in Chicago.

# CLASS NOTES

## 1989

**Adrienne (Pancerz) Moreno** (B.A. Elem. Ed. - Teacher Ed.) is a technology and 5<sup>th</sup> grade art/music teacher with the Benjamin School District 25 in West Chicago.

## 1990

**Kathleen Kardaras, Psy.D.** (M.A.S. Gifted Ed.) is coordinator of the university honors program at NEIU. She is also responsible for organizing the Student Research Symposium and Alpha Chi Honor Society activities on campus.

**Bradley O'Brien** (B.A. Sec. Ed. - Music) was appointed orchestra director for the symphony orchestra at Lane Technical College Prep High School. He has performed with Placido Domingo in the opera *Idomeneo* as a super.

## 1992

**Dennis Grammenos, Ph.D.** (M.A. Geog. and Env. Studies) is assistant professor of geography and environmental studies at NEIU. Prior to his appointment, he was an instructor at the University of Illinois at Urbana-Champaign.

**Melanie S. Miller-Silver** (B.A. Art) is co-owner of Crystal Feather, a beading and craft supply store in Schaumburg. She also teaches classes in beadwork and art clay silver.

## 1993

**Lonna (Van Cleave) Converso** (M.A. Speech) is the director of public information at the Northeast DuPage Special Recreation Association in Addison.

**Walter Dudycz** (B.A. U.W.W.), Illinois State Senator, 7<sup>th</sup> District, has announced he will not run for re-election in 2003, after completing 18 years in office.

**Javier Medina** (B.A. Criminal Justice), a pilot for American Eagle Airlines, was recently promoted to captain. He is based out of Chicago's O'Hare Airport.

**Isagani O. Sta-Maria** (M.A. Political Science) contributed a chapter entitled "American Military Bases in the Philippines and the Military Bases Agreement" for a publication entitled *Farms, Firms, and Runways: Perspectives on U.S. Military Bases in the Western Pacific*. He is administrator of Mercury Caregiving, Inc. in Chicago.

**James T. Struck** (B.S. Biology) presented a poster on educational materials on alcohol at the annual meeting of the National Alliance for the Mentally Ill in Washington, D.C. He is a part-time reference librarian at Roosevelt University and library assistant at the Illinois Institute of Technology in Chicago.

**Sandra Wallace** (B.A. B.O.G.) is an administrative programs assistant at the U.S. Environmental Protection Agency in Chicago.

## 1994

**Robert Irons** (B.S. Finance, M.B.A. '95) is the senior business manager of the corporate fraud and database management division at SBC/Ameritech in Elgin.

**Michael Turner** (B.S. Finance) is vice president of credit and financial services at Anixter, Inc. in Skokie.

## 1995

**Carl Anderson** (B.A. B.O.G.) was promoted to team manager of the Management Team Kemper/Boeing Washington Workers Compensation Program at Kemper Insurance/Boeing in Seattle, WA.

**Robert Lonsdorf** (M.A. Geog. and Env. Studies) is a senior planner for watersheds and biodiversity in the municipal assistance program at the Brandywine Conservancy's Environmental Management Center in Chadds Ford, PA.

**W.J. Patt Patterson** (B.A. B.O.G., M.A. '98 Comm. College Admin.) is coordinator of the PULSE program at NEIU. PULSE provides non-traditional teaching of math, reading, and geography for academically at risk 8<sup>th</sup> grade through high school students.

**Aileen Rosen** (B.A. Social Work) is a program development coordinator with the Chicago Police Department.

## 1996

**Dace Kezbers** (M.A. Linguistics) is an academic advisor and ESL teacher at the University of Illinois at Chicago.

**Miriam Daisy (Ocana) Rivera** (B.A. Spanish) is donor records coordinator at the Orthopaedic Research and Education Foundation.

## 1997

**Stephen Cattouse** (B.S. Computer Science, M.S. '01 Computer Science) is technology resource coordinator at NEIU's Center for Inner City Studies.

**Jan (Pearlman) Kraft** (B.A. Sec. Ed. - English Ed., M.A. '99 Human Resource Dev.) is an instructional designer and developer at Blue Cross/Blue Shield in Chicago.

**Michelle D. Morrow** (M.A. Inner City Studies) is director of scholarships/retention for the office of student affairs at NEIU.

**Russell Turk** (B.A. Special Ed.-LD/Mental Retardation) completed his M.S. in rehabilitation from the University of Illinois at Urbana-Champaign. He is a vocational rehabilitation counselor with the Massachusetts Rehabilitation Commission.

## 1998

**Neida Hernandez** (B.A. Spanish) is a program advisor at NEIU's teacher education program.

**Donna (Shall) Horwitz** (M.A. Gerontology) is an activity coordinator at the Council for Jewish Elderly - Klafter Residence in Wilmette.

**Juan Lopez** (B.S. Management) was promoted to product line manager at U.S. Robotics, Inc. in Rolling Meadows. He has global product management responsibilities that frequently take him to Europe and Asia. He is currently a student in the M.B.A. program at Northern Illinois University.

## 1999

**Erica (Gonzalez) Davila** (B.A. Elem. Ed. - Teacher Ed., Sociology) is an administrative assistant, counselor, and research assistant at the University of Illinois at Urbana-Champaign.

**Anthony Harris** (B.A. Economics) is an investment representative at Edward Jones Investments in Oak Lawn.

**Carol (Hale) Hawkinson** (B.A. B.O.G.) is a training specialist at the American Red Cross. She also works as a substitute teacher in the Vernon Hills area.

**Gregory Jackson** (B.A. Political Science) is vice president of government and public affairs for IT Associates, Inc. in Buffalo Grove. He is listed in the 2002 *Who's Who in America* and is a candidate for the 21<sup>st</sup> District Lake County Board.

**Deanna Kelly** (M.A. Math: Elem. School Tchr.) created an addition and multiplication audio CD with musician and performer Julie Ponce. The CD is entitled *Elbee's Friend's POWERFUN* and features characters that teach the numbers one through ten.

## 2000

**Suzanne Earth** (B.A. Speech) is a sales representative with the humanities, social sciences, and languages division at McGraw-Hill Higher Education in Chicago.

**Suleyma Perez** (B.A. Social Work) is project coordinator for the Chicago ENLACE Partnership Program/Kellogg grant at NEIU, where she is currently completing her M.A. in educational leadership.

## 2001

**Blair Shaman** (M.A. Geog. and Env. Studies) is a geographic information science consultant at Tobin International in Houston, TX.

## IN MEMORIAM

**Jean Casale**  
(M.A.S. '69 Mental Retardation)

**Jeffrey Cupuro**  
(B.A. '79 Bus. and Mgt.)

**Brian Dahlquist**  
(B.A. '85 Speech)

**Esther Friesel**  
(B.A. '67 Soc. Sci.- Elem. Ed., M.A. '78 Math: Elem. School Tchr.)

**Josefina Herdz Fritz**  
(B.A. '94 Spec. Ed. - LD / BD)

**Jeffrey Hallberg**  
(M.A. '88 English)

**Carnella Johnson**  
(B.A. '76 B.O.G.)

**Michael Mages**  
(B.A. '75 Bus. and Mgt., Sociology)

**Hester Meeder**  
(M.A.T. '69 Mathematics)

**Nancy Miller Griffith**  
(B.A. '71 History)

**Aphrodite Pappas**  
(B.A. '74 Spec. Ed. - LD)

**John Preas**  
(M.A. '74 Speech)

**Elaine Rubens**  
(B.A. '65 Early Childhood Ed.)

**Mort Shorris**  
(B.Ed. '61 General Ed. - Elem.)

**Mary Tarzon**  
(B.Ed. '61 General Ed. - Elem., M.A.T. '67 English - Lang. and Appl.)

**Edith Wold**  
(B.A. '84 Sec. Ed. - Art, Human Resource Dev.)

**Pauline Woodruff**  
(M.A. '72 Guid. and Counseling - Elem. School)

**Judith Woronecki**  
(B.A. '73 Psychology)

APR 17 2002

ARCHIVES

Non-profit Org.  
U.S. Postage PAID  
Chicago, IL  
Permit No. 2929

66\*1\*\*\*\*\*5-DIGIT 60660

C. J. Althage  
1340 W Glenlake Ave  
Chicago IL 60660-2506

## Can You Talk and Eat While Doing Business?

The Business and Management Club will host its Tenth Annual Business Etiquette Seminar and Dinner. The program is intended to give an understanding of what a formal meal entails in a business situation, all while devouring a five-course dinner! Though open to all alumni and friends, College of Business and Management alumni are especially encouraged to attend.

Saturday, April 13, 2002, 6:00 to 10:00 p.m.  
Ballroom, Lincolnwood Radisson Hotel  
4500 West Touhy Avenue in Lincolnwood  
Cost: \$35 (\$17.50 for currently enrolled NEIU students)

Advance registration and business attire are required. Deadline for registration is Monday, April 8. Registration forms may be obtained by calling Lynn Payer, management and marketing department secretary, at 773-442-6121. Seats are limited.

## Did You Find True Love at Northeastern?

Did you meet your spouse at Northeastern? Or did you find out after you met that your spouse had an NEIU degree? Care to share some good memories with us? If so, please send us your story:

NEIU Office of Alumni Affairs  
5500 N. St. Louis Avenue • Chicago, IL 60625-4699  
Fax Number: 773-442-4215 • e-mail: alumni@neiu.edu

Please include your name, your spouse's name (with maiden name if applicable) and the years your degrees were received. Even if you don't submit your story, please send us information so we can update our records. A story (or two) will be featured in the "Class Notes" section of the summer issue of the *NEIU Magazine*.

## Chicago and Suburban Teacher Job Fair at NEIU in May

NEIU's placement office will host the Chicago and Suburban Teacher Job Fair Tuesday, May 14, from 12:30 to 4:00 p.m. in Alumni Hall in the NEIU Student Union. Approximately 25 to 35 Chicago and suburban school district recruiters will attend. Admission is free to NEIU students and graduates. Non-NEIU students or graduates will be charged a \$5.00 registration fee. Attendees should register at the door with resume copies in hand. A list of scheduled employers will be available after May 8 online at [www.neiu.edu/CarServ.htm](http://www.neiu.edu/CarServ.htm).

## Upcoming Events

All events are free to NEIU alumni unless otherwise noted. Call 773-442-4211 for details.

**Chicago and Suburban Teacher Job Fair**  
Recruiters coming from individual Chicago and suburban schools and schools districts.

Student Union Building - Alumni Hall  
Tuesday, May 14, 2002, 12:30 to 4:00 p.m.  
Visit [www.neiu.edu/CarServ.htm](http://www.neiu.edu/CarServ.htm) for more information.

**College of Business and Management**  
Business Etiquette Dinner  
\$35/per person

Lincolnwood Radisson Hotel Ballroom  
4500 W. Touhy Avenue, Lincolnwood  
Saturday, April 13, 2002, 6:00 to 10:00 p.m.

## Presidential Lecture Series

**Chitra Banerjee Divakaruni**, author  
Student Union Building - Alumni Hall  
Thursday, April 18, 2002, 7:30 p.m.

## Jewel Box Series

All concerts are held in the Fine Arts Center Recital Hall. Discounted tickets are available for alumni. Call the box office at 773-442-INFO.

**Chicago String Quartet**  
Friday, April 19, 2002, 8:00 p.m.

**Vermeer Quartet**  
Friday, May 10, 2002, 8:00 p.m.

## Mostly Music at NEIU

Call 773-442-4978 for a complete calendar of events.

**KLING Concert**  
Fine Arts Center Recital Hall  
Friday, April 12, 2002, 8:00 p.m.