

9-12-1988

Independent- Sep. 12, 1988

James Rogers

Follow this and additional works at: <https://neiudc.neiu.edu/independent>

Recommended Citation

Rogers, James, "Independent- Sep. 12, 1988" (1988). *The Independent (1988-present)*. 9.
<https://neiudc.neiu.edu/independent/9>

This Newspaper is brought to you for free and open access by the NEIU Student Newspapers at NEIU Digital Commons. It has been accepted for inclusion in The Independent (1988-present) by an authorized administrator of NEIU Digital Commons. For more information, please contact neiudc@neiu.edu.

Welcome Back

by Tom Gouliamos

The staff of the "independent" welcomes everyone and wishes all a very successful school year. Our primary goal is to bring you the news and events taking place on our three campuses, information and tips on how to cope in our scholarly environment, and hopefully, a touch of humor and entertainment.

Northeastern Illinois University has been undergoing many changes. President Gordon H. Lamb's administration has been operating a little more than a year. Changing the image of Northeastern to a more scholarly institution is a major objective of this administration.

When changes occur humans have a natural fear of the unknown or the new. It is the objective of the "independent" to report these changes and ease the collective anxiety of the University Community, with the welfare of the student foremost in our minds. We will endeavor to present as many views and opinions as possible. We will also take a stand

on these issues and then let the reader make up his/her own mind.

The "independent" student newspaper is also new. Its first issue was published on March 14, 1988. The staff of this paper is comprised of old and new talent ready to serve the students. Editor James Rogers, Layout and Art Editor Don Schnitzias, are experienced hands in journalism. News Manager Tom Gouliamos and Business Manager Sophia Xydis are new with the "independent".

We encourage student participation in this newspaper and invite all to join us. Our organization offers a great learning experience in journalism and writing and can be used as a stepping stone towards a career and a secure future. We will emphasize throughout the year that student participation and feedback is very important to us. If you have any news or information affecting the students or the University Community or if you just want to voice your opinion, write to us or just give us a call at ext. 3811.

The Northeastern

independent

Volume 2 ■ Issue 1 ■ September 12, 1988

Student Senate: A Study in Student Government Failure

by James Rogers

Student Senate President Galen McGee has failed to have a quorumed senate meeting to conduct business since he took office on the 1st Monday of March. McGee was elected to a one-year term as president during the third week of January.

The Student Senate does not have a budget for FY1989. The office at E-210 has been vacant for 3 months and no postage or supplies have been dispensed to the 60 student clubs. Repeated attempts to reach McGee, who sources report has a fulltime bank teller job, have failed.

Problems began as early as the February 15 senate meeting. At that time President-Elect McGee argued the right of a student to vote as a senator even though the student was not officially registered. Tom Gouliamos, Student Senate president at the time, gavelled McGee out of order but he continued to disrupt the meeting.

The Fees and Allocations Committee (FAC) meeting of March 10 adjourned in confusion as McGee, an Ex Officio non-voting member, attempted to discredit senate-appointed member Sophia Xydis. McGee argued Xydis had paid her tuition bill late. Therefore, he reasoned, she was not technically a legitimate student and

could not be seated as a member of FAC.

The Xydis matter was taken to the Student Supreme Court. The court ruled that Xydis was a student and could serve as an FAC member. President Lamb and Director of Student Activities Walter Williams concurred.

The student Fees and Allocations Committee has been the only functioning arm of student government since February. As a result, student clubs have been able to receive FY1989 budgets on schedule.

In a letter to McGee, Student Senate Vice President Maria Paredes requested his immediate resignation, citing poor leadership. McGee declined.

Student Senator Gena Katsoulis suggests that McGee is incapable of doing his job because of full-time employment off campus. "He is not fulfilling his responsibilities because he is never at the University and in his office where he is supposed to be."

Another student senator, Peter Andritsos, says, "I have missed two senate meetings because I was not informed about them." The efficiency of the Student Senate office staff to dispense information and services and the completion of the senate budget is the direct responsibility of the



RECENT FEES AND ALLOCATION MEETING: Chairperson Tom Gouliamos is flanked by Student Senator Angelo Hitaris (his left), and Student Senator Sophia Xydis and Ray Olinger, President of Apocalypse. Photo by James Rogers

Student Senate President. McGee has received a stipend of \$300.00 monthly paid from Student Activity Fees.

There is a move within the senate membership to impeach McGee. A quorum of twelve senators and Vice President Paredes could start the proceedings. This arrangement would be the harshest punishment that could befall McGee.

Other senators lean toward the dissolution of the senate body entirely, and some 18 senators have signed resignation forms. Were these to be accepted by the Student Supreme Court, the Student Senate would be officially dissolved and special elections would be called. Once in place, student senators would themselves elect their officers.

September 26 Issue
Galen McGee Viewpoint Told

INSIDE:

Calendar Snafu.....	Page 2
Photo Opinion.....	Page 3
Pioneer Students.....	Page 4
Theatre (Sept. 21-24)...	Page 7
Campus Guide.....	Page 8-9
New Administrators..	Page 10
Sports Schedules.....	Page 12
NCAA Division I.....	Page 15

The Northeastern independent

Volume Two • Number One

Editor..... James Rogers
News Manager..... Tom Gouliamos
Manager of Business..... Sophia Xydis
Layout Manager..... Don Schnitzius
Assisting: Bonny Rhoads, Terri Lippert
Contributors..... Bonny Rhoads,
 Halina Holly Propst, Ilene Sandman
Advisor..... Jonell Nimock
Media Consultant..... Michael Wilson

The **Northeastern independent**, the official campus newspaper serving Northeastern Illinois University, 5500 N. St. Louis Ave., Chicago, IL 60625-4699, is published twice monthly, during the regular academic year. Publication schedule, however, may vary.

The **independent** editorial/publication/advertising offices are located in the University Commuter Center basement, room E-409, between the cafeteria and campus gameroom, at the south entrance of UNI's Media Row.

The **independent** NEWSPAPER OFFICE can be reached any time, and any day at 794-2812. On-campus, dial ext. 3811, 3812 or 2812.

DEADLINE for submission (editorial, advertising, art, letters) is Friday, 4:30 p.m. for the issue following two weeks later. No exceptions. All copy must be typed, double-spaced. Late copy, or material which does not conform to or meet with the standards set forth under the **independent** Publication Policy will be handled accordingly by the editors. No submissions will ever be guaranteed publication.

The **independent** editors have sole authority governing all materials submitted. Editors of the **independent** serve as publishers of the newspaper; the University assumes no responsibility for the **independent** or views expressed therein.

The editors of the **independent** reserve the right to edit all copy, wherever and whenever deemed necessary. Editing implies that editors need not accept all of a submitted material for publication. The editors may or may not rewrite unsolicited material at their discretion. Good journalism standards shall and will be maintained.

PHOTOS submitted for publication become the property of the **independent**. Photos will be returned upon request, but will not be held for more than one week. Photos should include informative captions (six lines each maximum), typed, double-spaced, on separate sheets and attached to the page.

The **independent** retains all copyrights or material published herein; articles, photos, artwork, etc., may be reprinted only with the expressed, written permission of the editors, author(s), artist(s) or photographer(s) involved. Proper credit must be given to the **independent** as well as to the person(s) responsible for the original material.

Direct all correspondence "To the Editor," in care of this newspaper.

Copyright 1988. All rights reserved. **Northeastern Illinois University independent.**

EDITORIAL

Calendar Snafu

Dr. Gordon H. Lamb, president of Northeastern Illinois University, stated in a memo on August 8, 1988 to the University Community that the proposed calendar changes will not be implemented for the Fall of 1988.

This decision came as a welcome surprise to the editors of this paper. Most of the students and faculty of this institution did not want the proposed change. President Lamb had been adamant about his plan to change the academic calendar until as late as Spring 1988.

It takes many months of hard work and a lot of money to bring about a calendar change. In the early stages of this process (May 1987), a survey was conducted by the office of the Provost. The survey showed that one third of the students surveyed would not enroll in the new expanded term. Another 13 percent of the student population said they would not be able to attend classes starting before Labor Day.

On November 23, 1987, the Joint Council of Chairpersons (JCOC) "unanimously and vigorously opposed" the proposed calendar.

Finally, on April 29, 1988, in a memo, President Lamb announced his decision to change the academic calendar.

Throughout this process the administration paid little attention to the (JCOC), the Faculty Council, or the Faculty Union, even though this proposed change would mean more work and less money to them. The administration also failed to notice the results of its own survey. If implemented, the calendar change would mean that a student's opportunity to graduate in less than four years would be taken away. This failure to attend the needs of both the students and the faculty resulted in friction between these two groups and the administration.

As pressure mounted, dark clouds gathered over Northeastern and the weather reports predicted thunderstorms in September. The sun showed itself finally in the form of President Lamb's August 8th memo. "NO CALENDAR CHANGE IN FALL 1988." The stated reason(s) for this decision was (were): "a tight budget year" and "unfavorable fiscal conditions." Lamb added: "the proposed calendar change will take place later under more favorable circumstances." The big question is: if "unfavorable fiscal conditions" existed in fiscal year 1987 and still exist today, why go through all these motions to change the academic calendar in the first place?

Nevertheless, the editorial staff of this paper congratulates President Lamb for his decision to postpone changing the academic calendar. If the reason was "unfavorable fiscal conditions", that's



fine. If it was because he finally listened to the faculty and students, that's even better.

We believe that President Lamb has the considerable task of changing the image of this university to one that is academically competitive with other universities. Yet changes in the calendar are both costly and counter-productive. More attention should be focused on quality programs and quality education. However, these challenges have nothing to do with whether we operate on a trimester or a semester system.

LETTERS AND THINGS

TO: DON SCHNITZIUS, EDITOR
AND CO-ORIGINATOR OF THE
"independent"

FROM: JAMES ROGERS, BUSINESS
MANAGER, CO-ORIGINATOR

SUBJECT: YOUR RESIGNATION

DATE: AUGUST 31, 1988

THANK YOU FOR CREATING THE "independent." THE APPEARANCE OF THE "independent" IS A QUALITY LEAP FORWARD FOR NORTHEASTERN'S STUDENT NEWSPAPER.

I HOPE YOU WILL REMAIN ON THE "independent" STAFF IN SOME CAPACITY. GOOD LUCK FOR THE FUTURE.

Editor's Note:

Faculty Council Chairperson Dr. Patricia Walsh was misquoted in the June 20th article, "Semester Change; Faculty View." The statement that should have run was, "There is a difference of opinion as to whether academically it's more sound to go to the 16-week system. We have been reviewed by accreditation boards and no one has cited our trimester system as being flawed."

ENGLISH 375

enter:

Journalism News Writing Now!!!

Call Mike Wilson — Ext. 3868

Develop
valuable skills.

JOIN THE
"independent"

Call Today ext 2812.

Photo Opinion

"What new policies would you like to see Dr. Terrell, the new Vice President of Student Affairs, incorporate?" — asked by Bonny Rhoads

Photos by Steve Boom



*Ellen Goggin
(Sophomore in General Studies)*

"I would like to see him implement an evening Student Activity Hour."



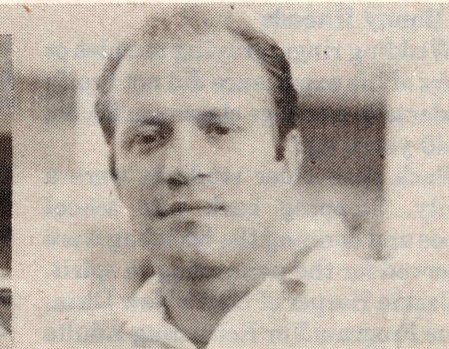
*Rodney MacIntosh
(Graduate Student in Political Science)*

"I would like to see him adopt a policy to evaluate student aid and workstudy jobs so that student labor isn't compensating for Civil Service staff shortages."



*Lisa Harwood
(Junior in Early Childhood and Elementary Education)*

"I would like to see him create a department headed by one person who would be in charge of all aspects of services designed for students with learning disabilities."



*Tim Mourikis
(Senior in Political Science)*

"I would like to see him adopt a policy to monitor more closely how appropriated and earned income funds are used by student clubs on campuses. I would also like to see him improve the service rendered to students who are attempting to start clubs on campus and to eliminate the excessive paperwork they encounter while in that process."

YOUR NAME HERE !

We want you to work for the Northeastern independent.

We want your reporting, writing, photography, editing, drawing, desktop publishing and layout skills working for us.

We'll even train you in areas you don't know yet.

Stop by room E-049 or phone 794-2812 any weekday.

PICK-UP THE independent AT

C V's FAST FOOD
Bryn Mawr-Kimball
588-8135.

CANDY TREE
3323 W. Foster
478-1103

GUS' UNISEX HAIRCUTTING
Bryn Mawr-Kimball
267-1414
HOLLYWOOD BAR
UNI TRADITION

IRVING'S REDHOT
Lincoln-Kimball
583-1010

LES ON DRUGS
Bryn Mawr-Kimball
SCHOOL SUPPLIES

LOREE'S RESTAURANT
3232 W. Foster
583-4978

RINGSIDE SPORTS-DANCE BAR
5639 N. Lincoln
275-4660

SHAFFER-FLORIST
Bryn Mawr-Kimball
478-6276

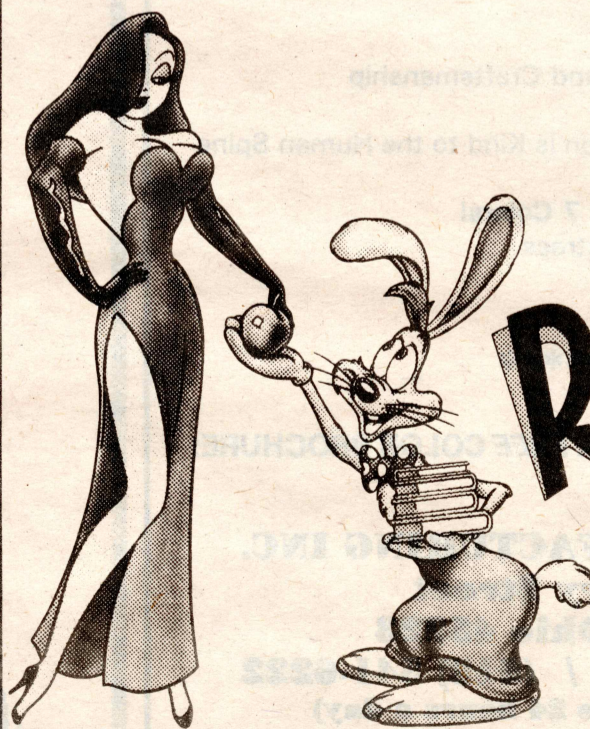
SUBWAY SANDWICH
4845 W. Western
784-5-SUB

T'S DOG HOUSE—CARRY-OUT
5541 N. Kedzie
267-4320

VIA VENETO RISTORANTE
3449 Peterson
267-0888

REMEMBER THE THREE R's: READIN', 'RITIN', AND RABBITS!

0136



TOUCHSTONE PICTURES • STEVEN SPIELBERG PRESENTS

Who Framed
ROGER RABBIT
A ROBERT ZEMMECKIS FILM

the most highly acclaimed
movie of the year!

TOUCHSTONE PICTURES • STEVEN SPIELBERG PRESENTS • ROBERT ZEMMECKIS FILMS
BOB HOSSONS CHRISTOPHER LLOYD "WHO FRAMED ROGER RABBIT" • JOANNA CASSIDY • SILVER SCREEN PARTNERS III • ALAN SILVESTRI • STEVEN SPIELBERG • KATHLEEN KENNEDY
PG PARENTAL GUIDANCE SUGGESTED • SOME MATERIAL MAY NOT BE SUITABLE FOR CHILDREN
JEFFREY PRICE & PETER SEAMAN • ROBERT WATTS • FRANK MARSHALL • ROBERT ZEMMECKIS
DISTRIBUTED BY MCA HOME ENTERTAINMENT INC. • 1988 Touchstone Pictures and MCA Home Entertainment Inc.

NOW SHOWING AT THEATRES EVERYWHERE

Pioneer students pave the way; Increase in returning adults

Note: This is the first article in a series on the older student. The purpose of the series is to explore what is unique in the experience of adults over 25 who go to college.

by Bonny Rhoads

Wedding rings, graying temples or years of life experience did not typify students in a college classroom 20, 30, or 40 years ago.

Back then older students were a rarity. Stepping back into school shoes and donning the book bag were reserved for the pioneering in spirit.

Jackie Harper of UNI's New Directions Program For Returning Adults remembers a classmate at Alma College in Michigan which she attended as an undergraduate 20 years ago.

Betty was a farm woman from the local community, and being over 25

was not the only thing that set her apart. While all the other students lived on campus, she lived at home with her husband and children. She was an Art Major and the first one in her family to get a college education.

Unlike today's student who can go to school part-time or full-time, she had only one choice: to go to school full-time.

"I wonder how she ever did it. She was really hungry for that education. When a lot of other people would have quit, she stuck with it," said Harper.

Though on the surface Betty seemed soft spoken and shy, Harper, pausing thoughtfully, remembered her having "a streak of gumption" and "the ability to stick up for herself."

"I can still see her leaning over one of those huge canvases, flinging paint on it, and working furiously," Harper added in a tone of admiration and enthusiasm.

UNI's Director of Health Services, Phyllis Sheain, has a story that goes further back to a time when being a nursing student and a wife were seen as mutually exclusive by society. As a result she dropped out of school at the age of 18 after marrying.

It wasn't until 27 years later that she had the opportunity to return to school. While she had matured so had the idea of flexible programs which attempt to meet the increasing market demand of the older student population (see the Demographic Chart accompanying this article).



Photo by Steve Boom

RETURNING STUDENTS listen intently at a recent meeting of the New Directions Program for Returning Adults

She attended Amundsen-Mayfair College and obtained her degree through a program that gave students the option of completing an equal curriculum in two, three, or four years.

Though Betty faced the challenge of an older student getting an education alone, Sheain had the company of a few more compatriots. One of them she remembers vividly.

"She had 10 or 12 kids. Her husband didn't want her to go to school. She studied with a flashlight in the closet."

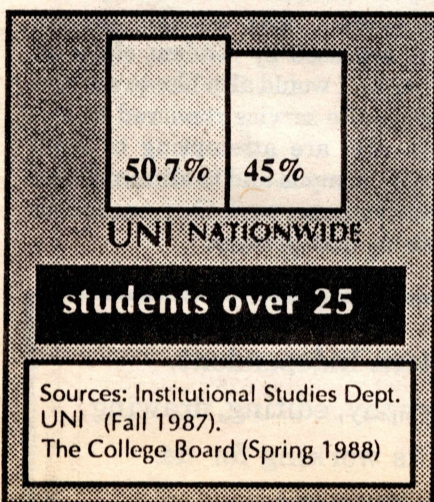
While getting a college degree for the older student isn't easy today, in the past it was even more difficult.

UNI, along with many other Institutions of Higher Education across the country, is attempting to accom-

modate the growing population of older students by expanding its services.

Older students may be particularly interested in the activities of the New Directions Program for Returning Adults which sponsors support groups and seminars. A Returning Adult Club, which would host social activities, is currently being considered by members of the program. In addition, the older student may want to keep in mind the counseling and referral services provided by the University's Health Service for those who have older dependents with serious illnesses that require home health care.

For more details contact New Directions at ext. 3566 and the Health Services Office at ext. 3454.



0129

A BETTER FUTON AT A BETTER PRICE!!

BUY FACTORY DIRECT
Converts from couch to bed quickly and easily!

THE COMFORTABLE, PRACTICAL,
VERSATILE FUTON SYSTEM FROM:
ALLWOOD MANUFACTURING INC.

- ** Free Delivery
- ** The Finest Quality Materials and Craftsmanship (Satisfaction Guaranteed)
- ** A Better Night's Rest/The Futon is Kind to the Human Spine
- ** An Elegantly Simple Design
- ** Hardwood Frame Available in 7 Colors!
- ** 100% Cotton Fill **Futon** Mattress (Also Available in 7 Colors!)

CALL OR WRITE TODAY FOR A **FREE** COLOR BROCHURE:

ALLWOODS MANUFACTURING INC.
4015 Cherry Street
Cincinnati, Ohio 45223
1-800-54-FUTON / (513) 541-6222
(operators available 24 hours a day)

Don't participate in the rape of the Amazon and other tropical forests.
Buy only wood products made from replenished American hardwood forests.

0118

PFM...YOUR UNIVERSITY CAFETERIA

PURCHASE YOUR
32 OUNCE
SOUVENIR
SOFT DRINK
FOR 99 CENTS

REFILLS ONLY
75 CENTS!

GOOD THROUGH
SEPTEMBER 30

0116

COMPUTER

SPECTACULAR SAVINGS ON TODAY'S TOP

PRODUCTS

FX-850 and FX-1050

Proven 9-pin technology, advanced paper handling capability, high speed performance.

**Call for
Elek-Tek Price**

LQ-800

Advanced technology for elegant letter quality.
\$299

PRINTER COMPARISON

MODELS	FX 850	FX 1050	LX 800	LQ 800	LQ 850	LQ 1050
PRINT HEAD	9 pin	9 pin	9 pin	24 pin	24 pin	24 pin
DRAFT SPEED	264 cps	264 cps	180 cps	180 cps	264 cps	264 cps
NLQ SPEED	54 cps	54 cps	30 cps	60 cps	88 cps	88 cps
COLUMNS	80	136	80	80	80	136
BUFFER	8K	8K	3K	7K	6K	6K
BUFFER EXPANSION 140.00			454835 32K	454835 32K	454835 32K	454835 32K
RESIDENT FONTS	Roman San Ser	Roman San Ser	Roman San Ser	Roman	Roman San Ser	Roman San Ser
TRACTOR	Built-in	Built-in	Built-in	\$25 w/ printer	Built-in	Built-in
MEAN TIME BETWEEN FAILURE			5 mill. lines	5 mill. lines	4000 hrs.	6000 hrs.

LQ-850 and LQ-1050

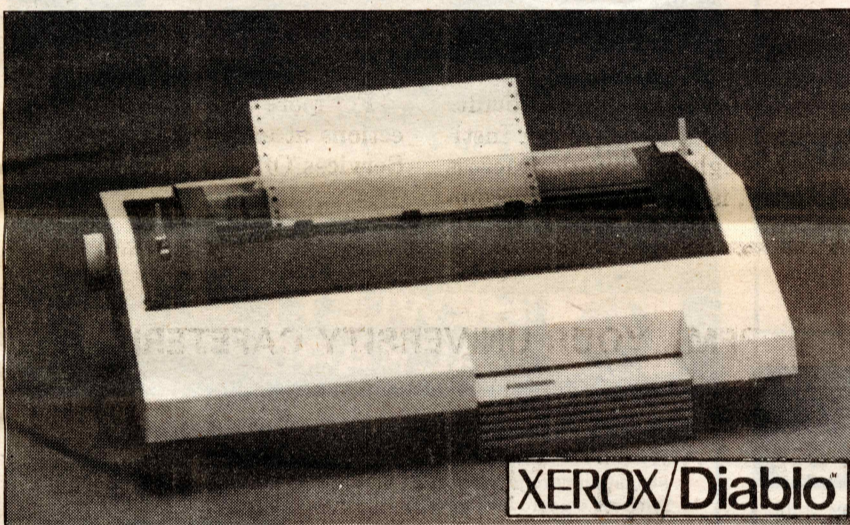
Fast, Remarkably quiet, 24-pin
Call for Elek-Tek Price

LX-800

Performance and value;
today's economical
\$199



EPSON LX-800



XEROX/ Diablo

Diablo D625 Daisywheel Printer

The **Diablo 625 Printer** continues a tradition in Diablo daisywheel printers; a tradition of high quality, versatility, high reliability, and superior print quality. The 625's wide array of features equip it to handle the most demanding of printing jobs, while its simplicity makes it reliable and easy to use.

Some of the 625's many features are:

- Print speed up to 25 characters per second
- 10, 12, and 15 pitch character spacing, and proportional spacing
- Printwheel encoding to automatically select proper character spacing and language
- Indicator alerts operator to end-of-ribbon, paper out, and printwheel out conditions
- Automatic bidirectional printing
- Numerous word processing enhancements
- Both normal tabbing and absolute tabbing
- Internal diagnostics (self-test) and remote (host-initiated) diagnostics
- Easily adapted to a variety of serial and parallel interfaces
- Plug-compatible interfacing to most popular computer systems

Elek-Tek Price \$199
3 month Elek-Tek warranty limited to quantities on hand

HARD DRIVES

SEAGATE
Internal Hard Disk Subsystems
20 Megabyte w/ Contr. XT ... **\$299**
30 Megabyte RLL XT ... **329**
40 Megabyte 40 MS 1/2 HT ... **399**
40 Megabyte 28 MS 1/2 HT ... **499**
MINISCRIBE
30 Megabyte RLL XT ... **349**

HARD DRIVE CARDS

Western Digital 30PS 30MB ... **\$399**
PLUS DEVELOPMENT
20 MB Hard Card ... **550**
40 MB Hard Card ... **689**

50% OFF 3M DISKETTES AND FILE BOX

5 1/4" DSDD (25 pack) includes
FREE flip file ... **\$19.99**

MONITORS

BEST BUY
Samsung Flat-screen Amber ... **\$109**
Samsung 2565 12" Amber TTL ... **99**
Samsung 13" color ... **275**
Samsung EGA ... **350**
Samsung Multisync ... **475**

IBM 5182

Color Dot-Matrix Printer
Mfr. Sugg. Ret. 2200.00
Elek-Tek Price 399.00

MODEMS

Hayes compatible
Internal (including software)
Practical Peripherals 1200 baud ... **\$64**
Everex 1200 baud ... **94**
Everex 2400 baud ... **179**
Migent 1200 baud ... **107**
External (no software included)
U.S. Robotics 1200 baud ... **179**
U.S. Robotics 2400 baud ... **329**
U.S. Robotics 2400E ... **385**
U.S. Robotics 9600HST ... **650**
Practical Peripherals 1200 baud ... **109**
Practical Peripherals 2400 baud ... **179**

MODEMS FOR TOSHIBA PORTABLES

2400 Baud Internal Modems
For T1000 ... **\$255**
For 1100 +, 1200, 3100, 5100 ... **285**

TRIPPLITE PERMAPOWER POWER PROTECTION

Surge Protector Strips
Scooter 3 outlet ... **\$9.90**
Perma Power 6 outlet ... **28**
Isobar 4-6 4 outlet ... **42**
Isobar 8-15 8 outlet ... **57**
Isobar 8-15R 8 outlet w/remote ... **65**
Line conditioners/stabilizers
LS600 2 outlet 600 watt ... **\$85**
LC1200 4 outlet 1200 watt ... **149**
LC1800 6 outlet 1800 watt ... **199**

HUGE SAVINGS ON DISKETTES

(*Packed in flip n' file) ("unformatted")	Dynast	maxell	3M	IBM	Elek-Tek	SONY	MEMOREX
3 1/2" SSDD	14.00	12.00	12.00*	—	—	13.00	12.00
3 1/2" DSDD	17.00	17.00	17.00	22.00	—	17.00	16.00
3 1/2" DSDDHD	—	45.00	45.00	45.00	—	45.00	—
5 1/4" SSDD	8.00	8.00	8.00	—	—	7.00	—
5 1/4" DSDD	10.00	9.00	9.00	15.00	7.99	—	8.00
5 1/4" DSDD96TPI	12.00	18.50	18.50	—	—	10.00	—
5 1/4" DSDDHD (for IBM AT)	12.00	17.00	17.00	28.00	9.99	—	17.00
8" SSDD	19.00	20.00	21.00	—	—	—	—
8" DSDD	23.00	23.00	24.00	—	—	—	—

**DICONIX 8213
Portable Printer**
Perfect for Laptop Computers
Elek-Tek Price \$299

**9 1/2 x 11 White Clean
Perf. Computer Paper**
20lb. Bond 2700 sheets ... **\$24.99**
20lb. Bond 1000 sheets ... **10.99**
Hammermill Inkjet Paper ... **33.00**
2500 sheets

COMPUTER SOFTWARE DEPARTMENT

ACCOUNTING					
Dac Easy Accounting 3.0	\$ 59.00	Mapmaster	223.00	Norton Utilities Advance	76.00
Dac Easy Bonus Pack Ver. 2.0	115.00	Microsoft Chart 3.0	250.00	PC Tools Deluxe	39.00
Dac Easy Payroll 3.0	59.00	Newsmaster 2.0	52.00	Sidekick 1.5 (Non-Copy prot.)	55.00
COMMUNICATIONS		Newsroom Pro	44.00	Sideways 3.2	40.00
Carbon Copy Plus	114.00	Pizazz	29.00	WORD PROCESSING	
Compuserve Starter Kit	22.00	Publisher's Paintbrush	142.00	Microsoft Word 4.0	189.00
Crosstalk Mark 4	117.00	Sigmamaster	130.00	Multimate Advantage II	265.00
Crosstalk XVI 3.6	95.00	Ventura Publisher	479.00	PFS: Professional Write 2.0	116.00
DATABASE		LANGUAGE		Webster's NewWorld Writer	97.00
Clipper	420.00	Lattice C Compiler 3.2	216.00	WordPerfect 5.0	225.00
dBase III Plus 1.1	375.00	Quick Basic 4.0	67.00	WordStar Pro 4.0	240.00
Paradox Ver. 2.0	405.00	Turbo Basic	60.00	MOUSE PACKAGES	
PFS! Professional File	145.00	Turbo C	62.00	With Paintbrush, Menus (Serial)	98.00
Q & A 3.0	195.00	Turbo Numerical Method Toolbox	63.00	With Paintbrush, Menus (Bus)	98.00
R Base for DOS	450.00	Turbo Pascal 4.0	60.00	With Paintbrush/Windows (Serial)	135.00
GRAPHICS		Turbo Prolog 2.0	94.00	With Paintbrush/Windows (Bus)	135.00
Aldus Pagemaker	479.00	C Compiler	290.00	Mitsubishi Mitsu	52.00
Chartmaster	215.00	UTILITY		Logitech HiRez (Bus)	85.00
Formtool Ver. 2.0	56.00	DS Backup +	39.00	PC Mouse (Bus)/Pop Up Menus	87.00
Graph-in-the-Box	71.00	Disk Optimizer 4.0	42.00	PC Mouse/Pop Up Menus	87.00
Harvard Graphics	265.00	Double DOS	41.00	PC Omni Mouse	55.00
		Norton Utilities 4.0	52.00		

ELEK-TEK, inc.

Purchase orders accepted from Universities, School Systems, Government and large corporate and industrial users subject to our credit approval.

RETURN POLICY: All sales are final except defectives which will be replaced with identical merchandise only within 30 days, (computers and large peripherals — 3 work days) after which manufacturer's warranty applies.

IBM is a trademark of International Business Machines Co.
All products subject to availability and all prices subject to change.

LINCOLNWOOD

6557 N. Lincoln Ave.
Main Phone 677-7660
Software 677-7228
Repair 677-7177
FAX No. 677-7168

STORE HOURS:

Monday-Friday 9-6
Thursday 9-8
Saturday 10-5 SUNDAY 12-5

WILLOWBROOK

Kingery Highway (Rt 83) at
63rd Street — Hinsdale Lake
Commons Shopping Center
Main Phone 887-7500
Software 887-7570
Repair 887-7512

STORE HOURS:

Monday-Friday 9-8
Saturday 10-6 SUNDAY 12-5

ELEK-TEK SYSTEMS CENTER

featuring IBM Products
only at
6840 No. Lincoln Ave.
Main Phone 982-5799

STORE HOURS:

Monday-Friday 9-6
Thursday 9-8
Saturday 10-5

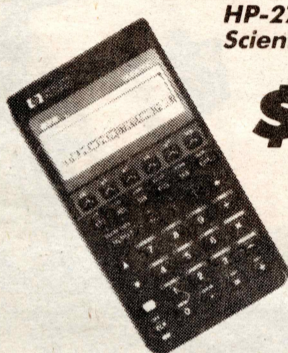
TREMENDOUS DISCOUNTS ON HEWLETT-PACKARD CALCULATORS

WE WELCOME PURCHASE ORDERS FROM WELL-RATED SCHOOLS & UNIVERSITIES



FREE OFFER!

Mention this ad and receive one application booklet of your choice at no charge with each HP-17B and/or HP-27S purchased from Elek-Tek between now and October 31, 1988.



**HP-27S
Scientific Calculator**

\$77

Mfr. Sugg.
Ret. \$110

- 2 calculators in 1; features technical and business functions
- Great for science, math and engineering students also taking business courses

Order No. 485583



**HP-17B
Business Calculator**

\$77

Mfr. Sugg.
Ret. \$110

- Complete set of business and financial functions
- Unique SOLVE feature for creating custom menus and formulas

Order No. 485559

HEWLETT-PACKARD APPLICATION BOOKS

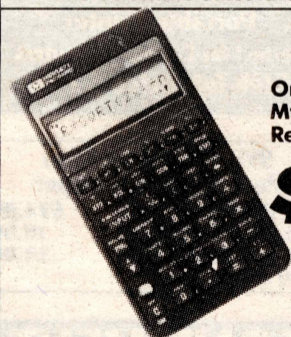
**\$9⁹⁵
value**

HP-17B & 27S	00017-90020	Business Finance & Accounting
	00017-90021	Marketing & Sales
	00017-90022	Personal Investment & Tax Planning
	00017-90019	Real Estate, Banking & Leasing
HP-27S ONLY	00027-90044	Technical Applications

EXCITING NEW RELEASES

We welcome two new scientific models, the HP-32S and HP-22S, both of which offer many of the advanced features of our high-end calculators at a more affordable price. The ease of use, plain English displays and low price make these new additions ideal for the entry-level user.

HP-22S Scientific Calculator for Students

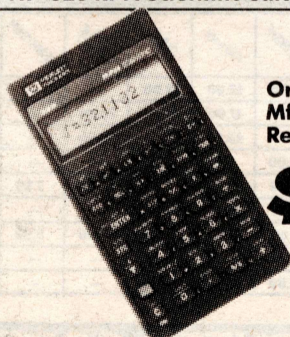


Order No. 491671
Mfr. Sugg.
Ret. \$59.95

\$43

- Algebraic entry system, alphanumeric display
- Equation-solving feature
- Built-in equation library
- Polar/rectangular conversions
- Two-variable statistics with linear regression
- Base and English/metric conversions

HP-32S RPN Scientific Calculator



Order No. 491663
Mfr. Sugg.
Ret. \$69.95

\$50

- Alphanumeric display, keystroke programming
- Equation-solving feature
- Two-variable statistics with linear regression
- Complex numbers and numerical integration
- Base conversions and arithmetic

We stock all other Hewlett-Packard Calculators, Accessories and Supplies at huge discounts too!

ELEK-TEK, inc.

Hewlett-Packard has always set the standard for scientific and financial calculators.



**hp HEWLETT
PACKARD**

HP-28S Advanced Scientific Calculator

- 32K bytes of available user memory flexible graphics with graph storage and recall
- Symbolic algebra and calculus

Order No. 485575
Mfr. Sugg. Ret. \$235

\$165

HP-19B Business Consultant II

- Business graphics
- Name and address data base
- Most built-in functions available in a business calculator

Order No. 485567
Mfr. Sugg. Ret. \$175

\$121

HP-82240A Infrared Printer

- Wireless. Selective or continuous printing via infrared signals
- Compatible with: 17B, 19B, 27S, 28S; only the HP41 CV and CX require module #HP 82242A (Ord. No. 454322)

Order No. 441816
Mfr. Sugg. Ret. \$135

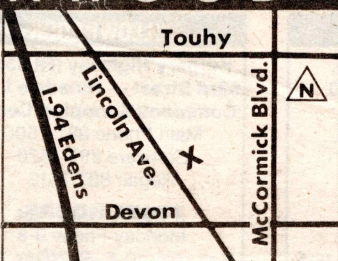
\$100

RETURN POLICY: All sales are final except defectives which will be replaced with identical merchandise only within 30 days, (computers and large peripherals — 3 work days) after which manufacturer's warranty applies.

All products subject to availability and all prices subject to change. Purchase orders subject to our credit approval. No extra charge for Visa or MasterCard.

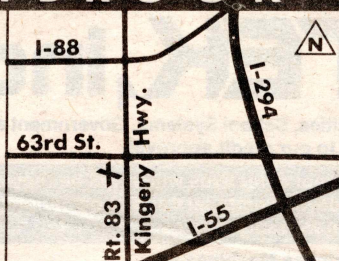
LINCOLNWOOD

6557 N. Lincoln Ave.
Store 677-7660
Software 677-7228
Repair 677-7177
STORE HOURS
Monday-Friday 9-6
Thursday 9-8
Saturday 10-5 Sunday 12-5



WILLOWBROOK

Kingery Hwy (Rt. 83) at 63rd St.
Hinsdale Lake Commons Shp. Ctr.
Store 887-7500
Software 887-7570
Repair 887-7512
STORE HOURS
Monday-Friday 9-8
Saturday 10-6 Sunday 12-5



ELEK-TEK SYSTEMS CENTER

featuring IBM Products
only at
6840 N. Lincoln Ave.
Phone 982-5799
STORE HOURS
Monday-Friday 9-6
Thursday 9-8
Saturday 10-5



University Graphics

Rogers Park resident Peter Kell as a Samurai warrior and Albany Park resident Myra Oiga as a witch engage in battle with bamboo sticks and their wits, when the University Theatre of Northeastern Illinois University presents "The Sound of a Voice," a one-act play written by Tony award-winner David Henry Hwang, August 9-11 and September 21-24 at 7:30 p.m. in the university's Stage Center, 5500 N. St. Louis Avenue in Chicago. The performance will also include "Present Tense", a comical one-act written by John McNamara. Admission is \$4, students and senior citizens, \$3.50. For more information, call 583-4061, ext. 3750.

Calendar of Events

by Halina Holly Propst

MONDAY, SEPTEMBER 12

The Student Senate will meet at 6:30 p.m. in the Heritage Room. All students are invited.

THURSDAY, SEPTEMBER 15

The UNI Polish Student Alliance is having a Bake Sale and information table in the Village Square starting at 10:00 a.m. Homemade Polish pastries will be on sale until the supply is diminished but the information table will be there until 3:00 p.m. for anyone interested in the club and its events.

TUESDAY, SEPTEMBER 20

C.C.A.B. will sponsor a film presentation of "Throw Mama From The Train" during Student Activity Hour. Check posters for location or

call C.C.A.B. at ext. 3858. Admission is free.

WEDNESDAY, SEPTEMBER 21— SATURDAY, SEPTEMBER 24

The University Theatre of Northeastern Illinois University presents two one-act plays—"Present Tense," a comedy by John McNamara, and "The Sound of a Voice," a drama by David Henry Hwang. They will begin at 7:30 p.m. in the university's Stage Center. Admission is \$4; students and senior citizens, \$3.50; UNI students free with I.D. For ticket or more information call 583-4061, ext. 3750.

THURSDAY, SEPTEMBER 22

C.C.A.B. presents the group "Y5" which will perform at Northeastern during Student Activity Hour. Check posters for more details or call C.C.A.B. Admission is free.

AUDITIONS

for
Student/Faculty/Community
Poetry Theatre

Produced by
Overtures Literary Organization
Northeastern Illinois University
5500 N. St. Louis Ave., Chicago
Tues., Sept. 13 & Wed., Sept. 14
at 7 p.m. in Rm. E-041

Poets, Actors, Musicians welcomed to audition.
(5 minutes each)

Theme is *Mysteries, Magic & Myths of Autumn & Halloween.*



0130

THE HOT DOG STORE THAT'S A WHOLE LOT MORE!

USE OUR CONVENIENT DRIVE-THRU

CHICAGO-NORTH

6201 North Kimball, Corner Lincoln & Kimball (Across from Lincoln Village)

ALL PHONES: 583-1010

PHONE AHEAD AND WE WILL HAVE YOUR ORDER READY!

— **FREE** —

BUY 1 JUMBO RED HOT AND GET SECOND JUMBO RED HOT **FREE!**
NOT GOOD WITH ANY OTHER OFFER — EXPIRES SEPTEMBER 25, 1988

0124

3232 W. FOSTER
CHICAGO, IL 60625

(312) 583-4978

Loree's

Restaurant and Ice Cream Parlor

SUN thru THUR. 6:00 A.M. — 12:00 P.M.
FRI. & SAT. 6:00 A.M. — 1:00 A.M.

Excellent Home Style Cooking • Colorful Ice Cream Creations

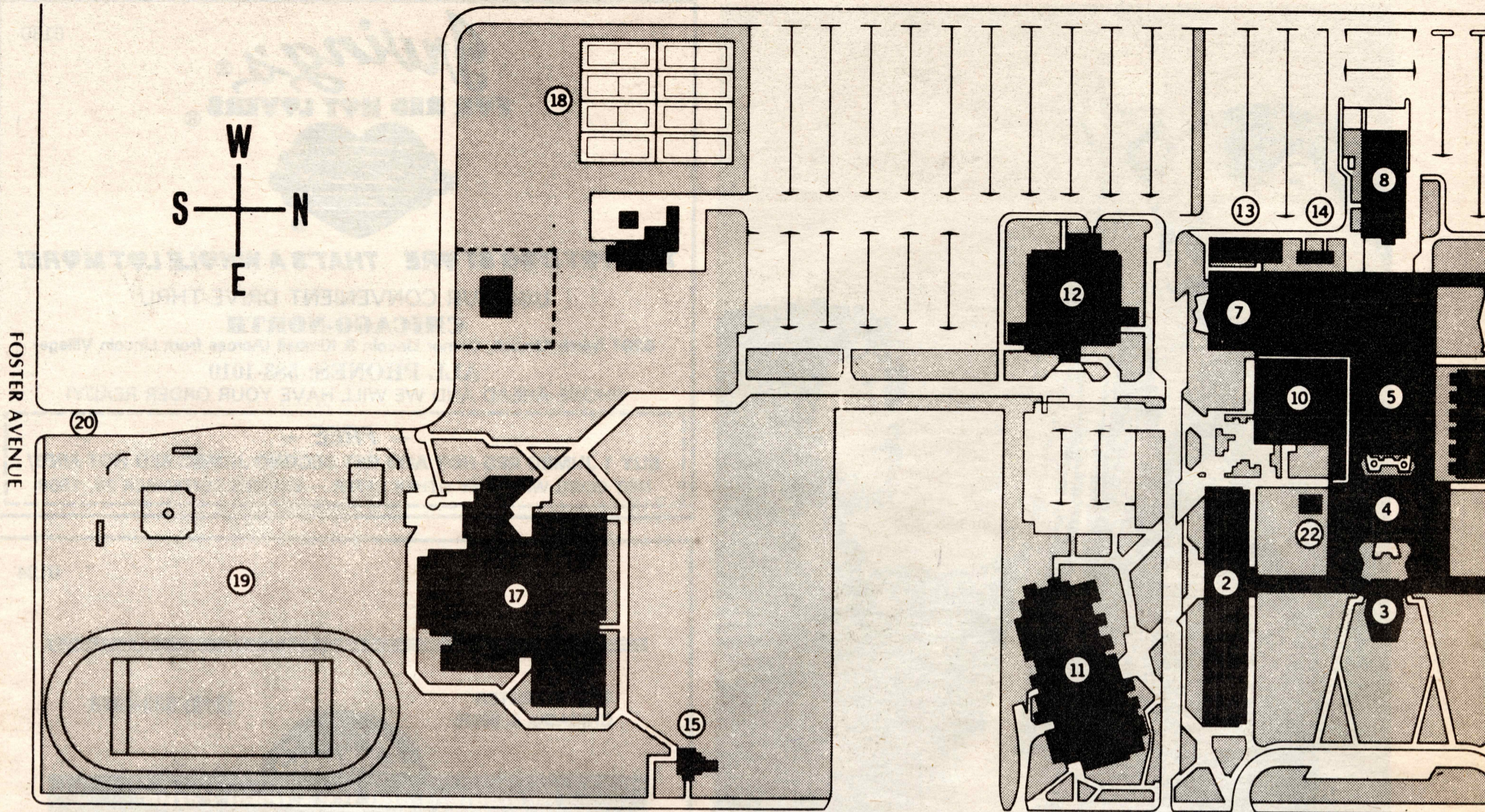
0132

★ JOIN THE MEDIA AGE ★

Student Clubs

FM Station (WZRD)
Literary Magazine (Overtures)
Spanish News (de Sola)
TV Station (NJPM-TV)
Music & Theatre (NJPA)
Video Yearbook
Newspaper (independent)

**CALL
MIKE WILSON
at
Ext. 3868**



ST. LOUIS AVENUE

Photos by Steve Boom

Off-Campus Locations

Northeastern, through its off-campus facilities, increases community access to higher education and provides students with an opportunity to obtain field experience in various activities.

The **Art Center**, located at 5101 N. Kimball, involves students, faculty, and the surrounding neighborhood. The two-story building has large, open areas necessary for drawing, painting, and sculpture classes.

The **Center for Inner City Studies**, located at 700 E. Oakwood Boulevard, houses academic programs in Inner City Studies Education and attracts students from an ever-increasing range of professions. Non-academic programs draw community residents interested in continuing education.

The **Chicago Teacher's Center**, located at 3901 N. Ridgeway, provides access to elementary and secondary teachers who wish to locate or create materials, attend workshops, or communicate with other teachers.

The **Child Care Center**, located at 5101 N. Kimball, provides the children of students and working parents with a program designed for the growth and development of the preschool child.

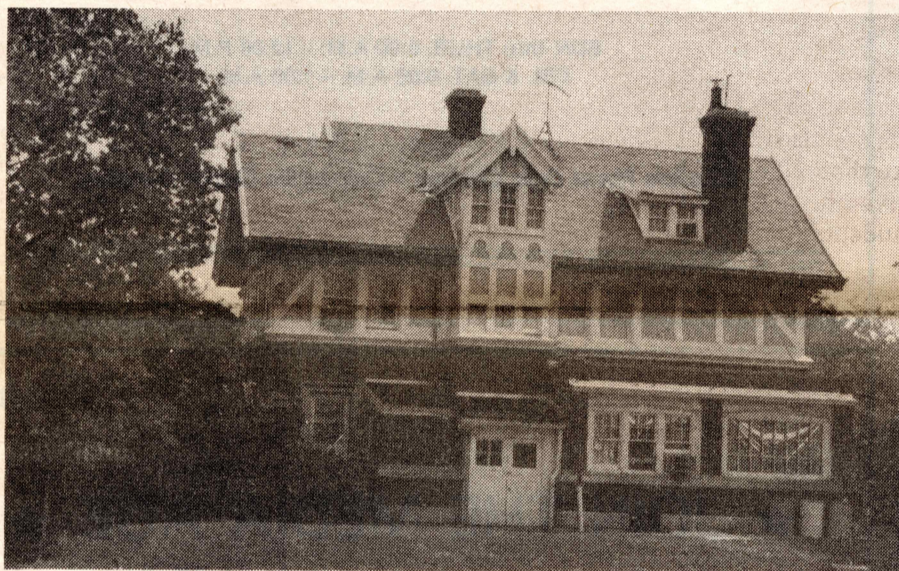
The **Creative Writing Center**, located at 3307 W. Bryn Mawr, provides a place where students can mingle freely with Chicago writers to compare manuscripts and ideas.

El Centro de Recursos Educativos (Educational Resource Center), located at 2400 N. Western, is the university's outreach into the Hispanic-American community. The overall purpose is to orient community residents to higher education and increase employment opportunities.

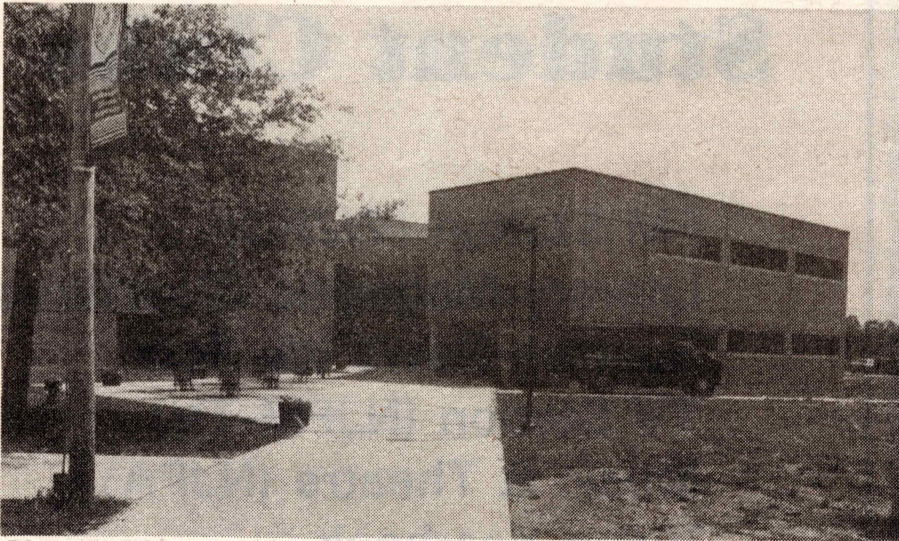
The **North River Community Gallery**, located at 3307 W. Bryn Mawr, presents art exhibitions and receptions for students, faculty, and the surrounding community.

Emergency Numbers

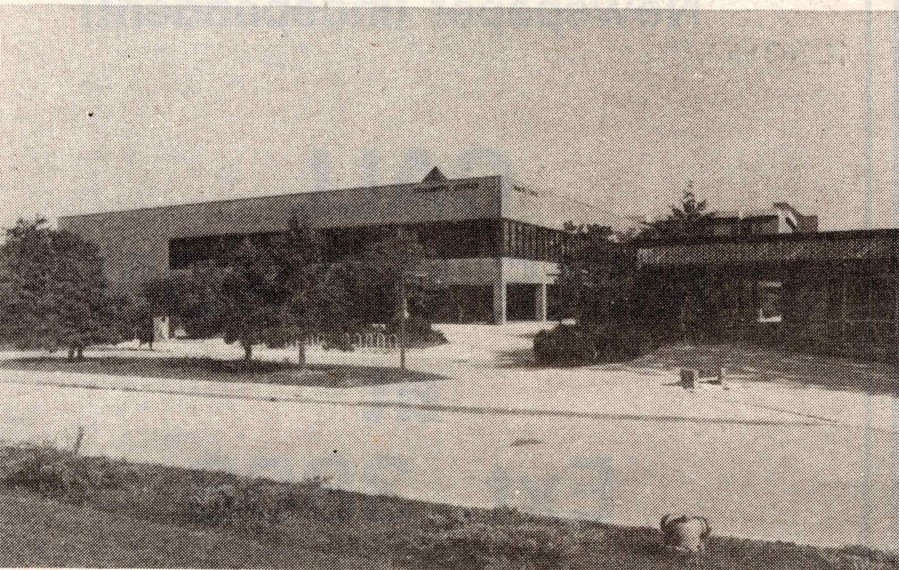
Hopelessly lost
or need an escort..... Call x200
Car won't start..... Call x200
Bookstore inquiries..... Call x3854
Cafeteria menu..... Call x4640
Student Senate..... Call x3860
Library hours..... 794-2615
or ext. 2615
Health Service..... Call x3454



S Cottage



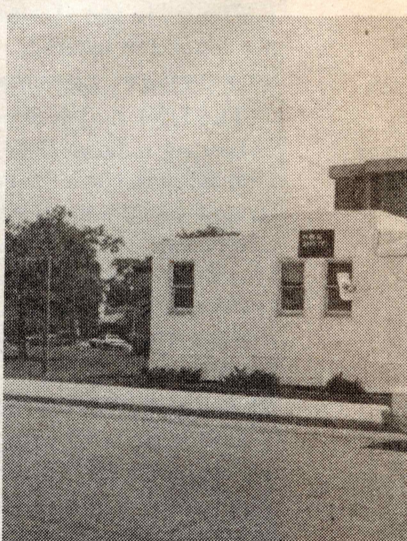
Physical Education Building



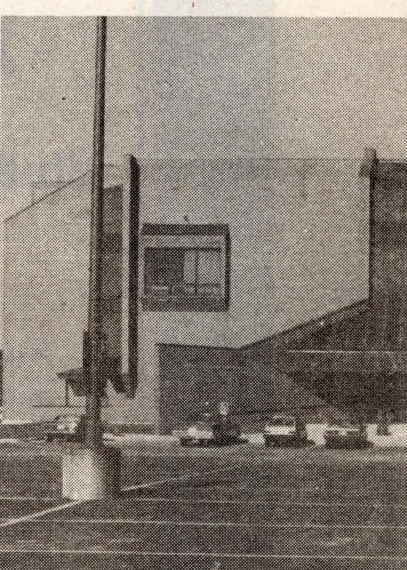
Commuter Center



Sachs (Administration) Building

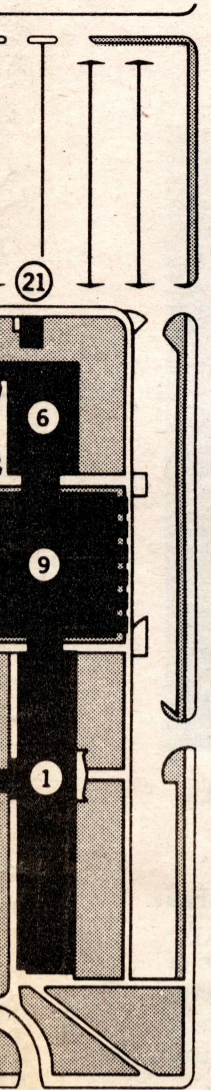


Public Safety Building



Ronald Williams Memorial Library

Key to the Campus Map



A-Wing.....	1
B-Wing.....	2
Jerome M. Sachs Administration Building.....	3
D-Building.....	4
E-Building.....	5
F-Wing.....	6
G-Building.....	7
H-Building.....	8
Classroom Building.....	9
Commuter Center.....	10
Science Building.....	11
Ronald Williams Library.....	12
M-Building.....	13
J-Building.....	14
S-Cottage.....	15
Physical Education Building.....	17
Tennis Courts.....	18
Athletic Field.....	19
Access Road.....	20
S-Annex.....	21
Portable.....	22

Departments

Academic Advisement.....	1
Academic Affairs.....	3
Accounting, Business Law, and Finance.....	9
Administrative Affairs, VP.....	3
Admissions and Records.....	4
Adulthood and Aging Studies.....	11
Alumni Office.....	15
Anthropology.....	9
Art.....	3
Bilingual/Bicultural Studies.....	9

Biology.....	11
Board of Governors B.A. Program.....	3
Bookstore.....	5
Bursar.....	4
Business Services.....	4
Campus Planning.....	8
Career Services.....	2
Cashier.....	4
Center for Program Development.....	3
Chemistry.....	11
College of Arts and Sciences.....	11
College of Business and Management.....	9
College of Education.....	9
Continuing Education.....	3
Counseling Center.....	2
Counselor Education.....	9
Criminal Justice.....	11
Dance Program.....	1
Development.....	15
Development and Public Affairs, V.P.....	3
Early Childhood Education.....	9
Earth Science.....	11
Economics.....	11
Educational Foundations.....	9
Elementary Education.....	9
English.....	9
English Language Program.....	9
Financial Aid.....	4
Foreign Languages and Literatures.....	9
Foreign Student Services.....	4

Geography and Environmental Studies.....	11
Graduate College.....	9
Health, Physical Education, Recreation and Athletics.....	17
Health Service.....	7
History.....	9
Human Performance Laboratory.....	17
Human Resource Development.....	9
Human Services.....	9
Information Science.....	9
Instructional Media.....	9
Kaskaskia.....	3
Linguistics.....	9
Management.....	9
Marketing.....	9
Mathematics.....	11
Non-Credit Courses.....	3
Music.....	3
Personnel.....	3
Philosophy.....	11
Political Science.....	11
President's Office.....	3
Program for Interdisciplinary Education and Professional Development.....	3
Project Success.....	2
Provost.....	3
Proyecto Pa'Lante.....	2
Psychology.....	11
Public Safety.....	21
Purchasing.....	4
Reading.....	9
Receiving.....	5

Secondary Education.....	9
Sociology.....	9
Special Education.....	9
Special Programs.....	2
Special Services.....	22
Speech and Performing Arts.....	3
Student Activities.....	5
Student Affairs, V.P.....	2
Student Development.....	2
Student Employment.....	4
Student Loans.....	4
Student Teaching.....	9
University Events.....	10
University Relations.....	3
University Without Walls.....	3
Veteran's Affairs.....	4
Women's Services.....	4
Women's Studies.....	3

Other Locations

Alumni Hall.....	10
Auditorium.....	5
Golden Eagles Room.....	10
Heritage Room.....	10
Stage Center.....	6

Photos by Steve Boom

Campus Hours

During Academic Trimesters
(Campus hours are subject to change)

General Campus Hours

Monday through Thursday 8:00 a.m.-10:00 p.m.
Friday 8:00 a.m.-6:00 p.m.
(Classroom & Science Buildings open until 10:00 p.m.)
Saturday 8:00 a.m.-1:00 p.m.

Admissions & Records

Monday through Wednesday 8:30 a.m.-6:00 p.m.
Thursday, Friday 8:30 a.m.-3:00 p.m.

Bookstore

Monday through Thursday 8:30 a.m.-7:00 p.m.
Friday 8:30 a.m.-3:00 p.m.

Cafeteria

Monday through Thursday 7:30 a.m.-7:00 p.m.
Friday 7:30 a.m.-2:30 p.m.

Child Care Center

Monday through Friday 7:00 a.m.-6:00 p.m.

Financial Aid

Monday through Wednesday 8:30 a.m.-6:00 p.m.
Thursday, Friday 8:30 a.m.-4:30 p.m.

Graduate College

Monday through Thursday 8:30 a.m.-6:00 p.m.
Friday 6:30 p.m.-5:30 p.m.

Health Service

Monday through Friday 8:00 a.m.-4:00 p.m.

Library

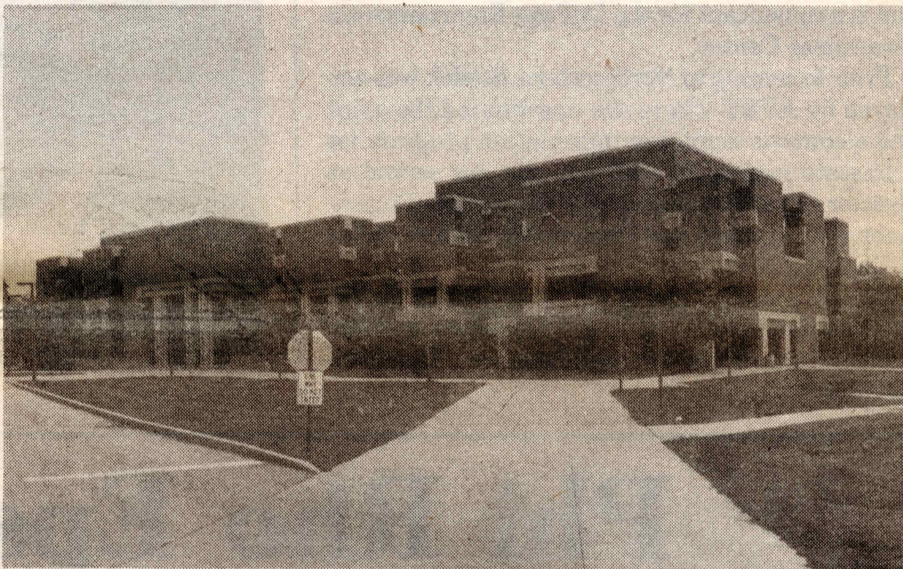
Monday through Thursday 7:45 a.m.-10:30 p.m.
Friday 7:45 a.m.-6:00 p.m.
Saturday 9:00 a.m.-5:00 p.m.
Sunday 12:00-5:00 p.m.

Personnel Office

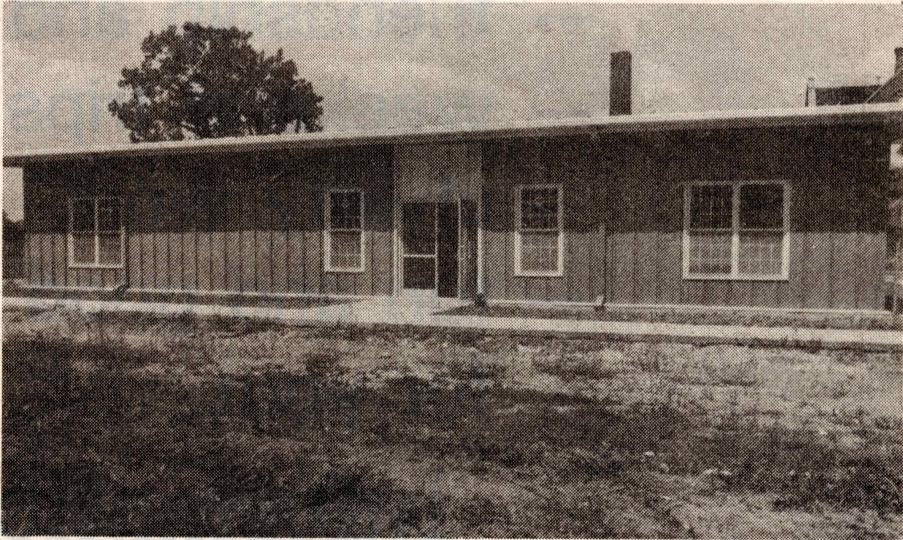
Monday through Friday 8:00 a.m.-4:30 p.m.

Switchboard

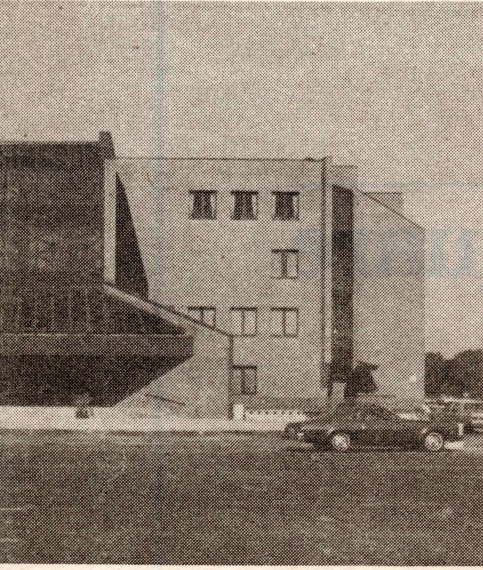
Monday through Thursday 7:30 a.m.-9:00 p.m.
Friday 7:30 a.m.-5:30 p.m.
Saturday 8:00 a.m.-12:00 p.m.



Science Building



Day Care Center



Classroom Building

Protect Freedom
of Speech
Become an independent Reporter



University Graphics

Sladek to Who's Who

Marti J. Sladek, director of university relations at Northeastern Illinois University in Chicago, has been selected for inclusion in the 1988 edition of *Marquis Who's Who in American Women*.

Sladek, who heads the news bureau, publications, photographs and community relations operations at Northeastern, is also on the board of directors of the Illinois College Relations Council and is a consultant for the DuPage Environmental Awareness Center.

Prior to coming to Northeastern, Sladek was employed by AT&T where she coordinated the print and electronic employee information program for a 10-state region. In addition, she has served as director of public relations for the Illinois Department of Commerce and Community Affairs Office of Tourism.

Sladek received her bachelor of science degree in education from Kent State University and her master of arts degree in journalism from Ohio State University.

Keihn appointed: given NCAA Div I goal

Northeastern Illinois University has announced the appointment of Dr. Dennis J. Keihn, currently athletic director at California State University-Los Angeles, as Director of Athletics, Intramurals and Recreation, effective August 1.

In announcing the appointment, President Gordon H. Lamb said, "Our nationwide search has culminated in the hiring of Dr. Keihn because we feel he has the background and drive to help the university meet two major goals over the next few years. First, we need to make full use of our new physical education complex, which just opened, for the benefit of the university and the community. Second, we want to move our intercollegiate program into NCAA Division I to provide better competitive opportunities for student athletes."

Keihn, who is active in various community and civic organizations, earned his doctorate (P.E.D.) in Physical Education from Indiana University.



Lamb names SIU grad as VEEP



Photo by James Rogers

President Lamb named Dr. Melvin C. Terrell as Northeastern's new Vice President of Student Affairs effective September 1, 1988. At the time of the appointment, Terrell held the post of Director of Minority Affairs at the University of Toledo at Toledo, Ohio, a state-supported commuter institution.

Terrell has a national reputation in student and minority affairs as an administrator and as a black studies professor. A native Chicagoan, Terrell is a graduate of Chicago State University, where he majored in history and minored in economics. He earned his Master's of Education from Loyola University of Chicago. Terrell's Ph.D. in Higher Education Administration is from Southern Illinois University.

He began his career as a teacher in the Chicago public schools, then became an administrator at the University of Arkansas-Monticello, the University of Wisconsin-Oshkosh and the University of Toledo.

Phi Rho Epsilon Sorority

0113

- friendship and sisterhood
- weekend trips and parties
- charity work
- fun and good times are waiting for you!

Information Meetings
September 15 & 20 at 12:30
Room CLS 3005

Information Tables in Village Square
September 12-16

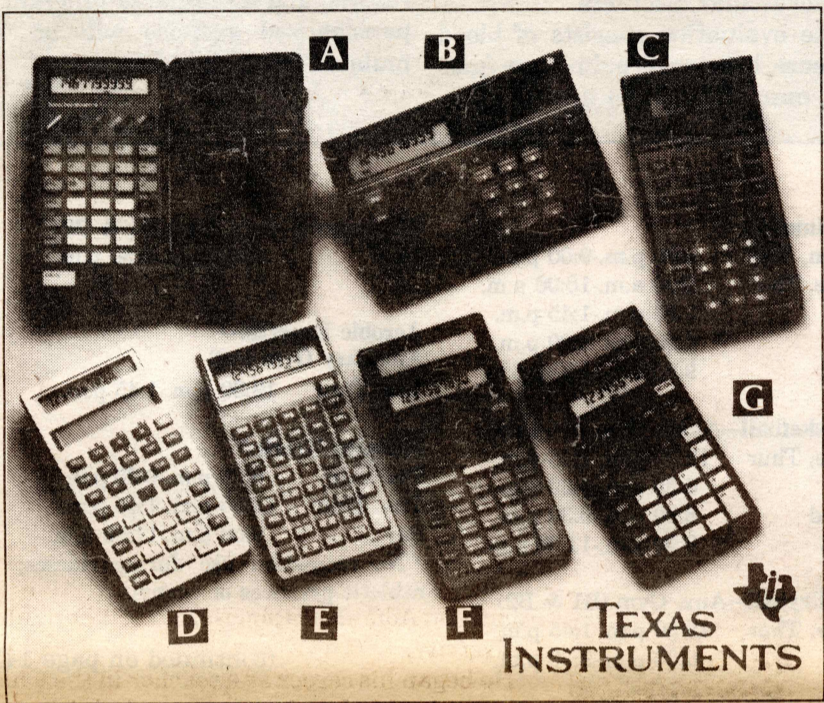
FOR MORE INFORMATION CALL US AT 728-9692

Come Join the Fun!!!

Texas Instruments CALCULATORS

Now-Even More Affordable

A TI Calculator puts the right functions at your fingertips. TI offers every kind of calculator from advanced scientifics to financials to solar-powered units that spotlight your answers in low-light conditions.



Scientific Calculators

	A	B	C	D	E	F	G
Model #	TI-Collegiate	TI-65	TI-60	TI-36 Solar	TI-35 Plus	TI-34 Kit	TI-30 Solar +
Order #	490566	455990	443127	418906	441551	491861	028250
Functions	177	148	124	89	89	96	63
Prog. Step		100	84				
Eng/Met	30	16	X				
Trig./Deg./Rad.	X	X	X	X	X	X	X
Reciprocal		X					
Power & Root		X	X	X	X	X	X
Oct. Dec. Hex.	X	X	X	X	X	X	
Linear	X		X				
Constants	15						
Display Digits	10	10	10	10	10	10	8
Mfr. Sugg. Ret.	\$60.00	\$80.00	\$45.00	\$29.95	\$26.95	\$24.95	\$19.95
Elek-Tek Price	\$39.00	\$49.00	\$33.00	\$18.99	\$16.99	\$17.99	\$12.99

(X) Indicates that the calculator has a particular function.

Scientific Programmable Calculators

	Model #	Order #	Program	Pascal	Math	Stat.	Fin.
H	TI-74	417627	BASIC	X	14	14	X
I	TI-95	443234	Keystroke		26	27	

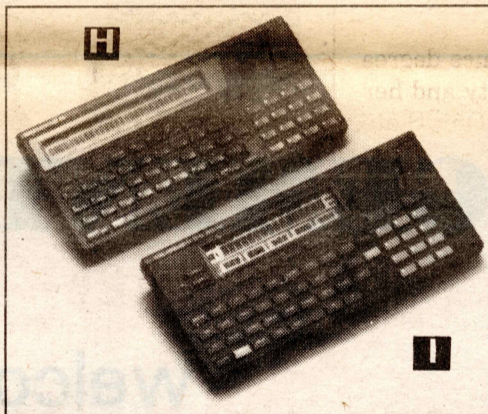
(X) Indicates that the calculator has a particular function. These programmable calculators have 8K memory, PL324 printers and algebraic operating systems.

Model TI-74 BASIC[™]
Mfr. Sugg. Ret. \$135

Elek-Tek Price **\$89**

Model TI-95 PROCALC[™]
Mfr. Sugg. Ret. \$200

Elek-Tek Price **\$135**



FREE!

Program Cartridge \$50 Retail Value

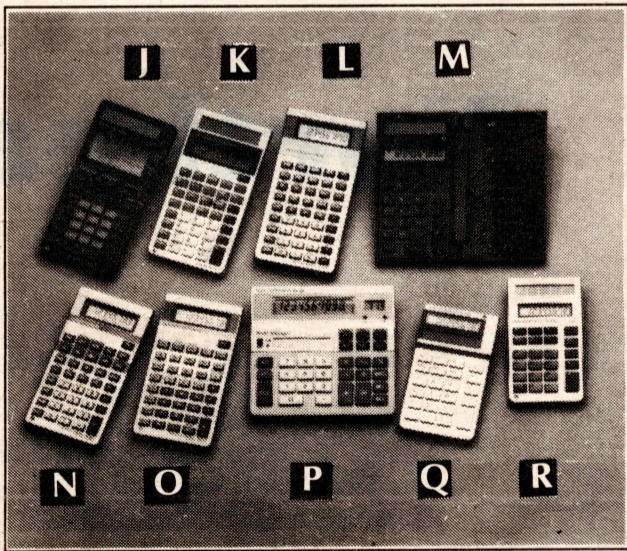
Purchase the TI-95 PROCALC[™] between August 15 and December 31, 1988 and receive a mail-in coupon good for one of the following program cartridges FREE. You can choose from Mathematics, Statistics, Chemical Engineering and 8K RAM Constant Memory[™].

[™]Trademark of Texas Instruments Incorporated.

Financial Calculators

	J	K	L	M	N	O	P	Q	R
Model #	TI-Business Edge	TI-BA Solar	TI-BA III	TI-2600	TI-BA-35	TI-BA-II	TI-BA-20	TI-1768	TI-1746
Order #	490558	456013	441543	456005	010700	010730	418857	418873	032219
Display Digits	10	10	10	10	8	8	10	8	8
Anylite [™]	X	X		X				X	
TVM	X		X		X	X			
Amortization	X		X						
Interest	X	X	X	X		X			
Ann. %; Lease/Buy		X							
Profit Margin						X	X		
Linear	X	X	X			X			
Mfr. Sugg. Ret.	\$60.00	\$55.00	\$55.00	\$50.00	\$26.95	\$45.00	\$22.95	\$13.95	\$13.95
Elek-Tek Price	\$39.00	\$34.00	\$34.00	\$29.00	\$16.99	\$28.00	\$15.99	\$9.99	\$8.99

(X) Indicates that the calculator has a particular function.



ELEK-TEK, inc.

Purchase orders accepted from Universities, School Systems, Government and large corporate and industrial users subject to our credit approval. No extra charge for Visa or MasterCard.

RETURN POLICY: All sales are final except defectives which will be replaced with identical merchandise only within 30 days, (computers and large peripherals — 3 work days) after which manufacturer's warranty applies.

All products subject to availability and all prices subject to change.

LINCOLNWOOD

6557 N. Lincoln Ave.
Store 677-7660
Software 677-7228
Repair 677-7177
STORE HOURS
Monday-Friday 9-6
Thursday 9-8
Saturday 10-5 Sunday 12-5

WILLOWBROOK

Kingery Hwy (Rt. 83) at 63rd St.
Hinsdale Lake Commons Shp. Ctr.
Store 887-7500
Software 887-7570
Repair 887-7512
STORE HOURS
Monday-Friday 9-8
Saturday 10-6 Sunday 12-5

ELEK-TEK SYSTEMS CENTER

featuring IBM Products
only at
6840 N. Lincoln Ave.
Phone 982-5799
STORE HOURS
Monday-Friday 9-6
Thursday 9-8
Saturday 10-5

Northeastern Illinois University Intramural Schedule Academic Year '88-'89

ACTIVITY	APPLICATION DEADLINE	STARTING DATE	DAY	TIME
FALL:				
FLAG FOOTBALL	SEPT. 20	SEPT. 27	T,R	12:30 P.M.
RACQUETBALL	SEPT. 20	SEPT. 27	T,R	5:00 P.M.
VOLLEYBALL	OCT. 7	OCT. 12	W	7:00 P.M.
BASKETBALL	OCT. 14	OCT. 18	T,R	12:30 & 7 P.M.
WALLYBALL	OCT. 21	OCT. 26	W	7:00 P.M.
WINTER '89:				
BASKETBALL	JAN. 20	JAN. 24	T,R	12:30 & 7 P.M.
RACQUETBALL	JAN. 27	JAN. 31	T,R	5:00 P.M.
VOLLEYBALL COED	FEB. 10	FEB. 14	T,R	7:00 P.M.
WALLYBALL	FEB. 17	FEB. 21	T,R	5:00 P.M.
SPRING '89:				
SOFTBALL	MAY 12	MAY 16	T,R	12:30 P.M.
SOCCER	MAY 12	MAY 16	T,R	12:30 P.M.
SUMMER '89:				
NONE				

* Can pick up applications & rules at intramural office, P.E. building 1110.

* If time permits, there will be a tournament at the end of each season. League play will determine the seating in the tournament & the winner of the tournament will be the winner of league.

RECREATION SCHEDULE September 12 — December 17

Racquetball	Wallyball-Racquetball Court #1
Mon, Wed 11:00 a.m.-9:00 p.m.	Mon, Wed 11:00 a.m.-9:00 p.m.
Tue, Thur 8:00 a.m.-9:00 p.m.	Tue, Thur 8:00 a.m.-9:00 p.m.
Fri 8:00 a.m.-5:00 p.m.	Fri 8:00 a.m.-4:30 p.m.
Sat 9:00 a.m.-11:00 a.m.	Sat 9:00 a.m.-11:30 p.m.
Weight Room	Table Tennis
Mon, Wed 2:00 p.m.-9:00 p.m.	Mon-Thur 8:00 a.m.-9:00 p.m.
Tue, Thur 11:00 a.m.-9:00 p.m.	Fri 8:00 a.m.-9:00 p.m.
Fri 2:00 p.m.-4:30 p.m.	
Sat 9:00 a.m.-11:30 a.m.	

Swimming	Badminton—Aux. Gym B1 & B2
Mon, Wed 4:00 p.m.-9:00 p.m.	Wed 6:30 p.m.-9:30 p.m.
Tue, Thur 8:00 a.m.-10:00 a.m.	
12:30 p.m.-1:45 p.m.	
4:00 p.m.-9:00 p.m.	Aerobic Exercise—
Sat 9:00 a.m.-11:30 p.m.	Auxiliary Gym (A2)
	Tue, Thur 12:30 p.m.-1:45 p.m.
Basketball—Auxil. Gym (A1 only)	Running Track *
Tue, Thur 12:30 p.m.-1:45 p.m.	Tue-Thur 6:30 p.m.-9:30 p.m.
6:30 p.m.-9:30 p.m.	Tue, Thur 12:30 p.m.-1:45 p.m.
Wed 6:30 p.m.-9:30 p.m.	Sat 9:00 a.m.-11:30 a.m.
Sat 9:00 a.m.-11:30 p.m.	* No recreation use during classes, athletic practices or events.
Volleyball—Aux. Gym (B1 & B2)	
Tue, Thur 12:30 p.m.-1:45 p.m.	
6:30 p.m.-9:30 p.m.	

(continued on page 14)

0101

MANAGEMENT ASSOCIATES

welcomes

Northeastern Students

to the

“FALL TRIMESTER”

New Members Welcome

THE**ACCOUNTING ASSOCIATES***Presents the First Annual***"MEET THE FIRMS NIGHT"****A Recruiting Event for Accounting Majors****TUESDAY, SEPTEMBER 27, 1988****6:30 — 9:30 p.m.****ALUMNI HALL****(Business Attire Recommended)*****Firms Attending:***

- Arthur Anderson
- Cna Insurance
- Computax
- Ernst & Whinney
- First National Bank of Chicago
- McGladrey & Pullen:
- Montgomery Ward
- Northern Illinois Gas
- Pannell, Kerr, Foster
- Peat Marnick
- People's Gas, Light & Coke
- Phillip Rootberg & Co.
- Thomas Havey & Co.
- Six CPA Review Courses
- Becker, Conviser, Miller
& Duffy
- DePaul
- Stanley Kaplan
- North Suburban NIU
(Northern Illinois University)

NO CHARGE!***SENIORS BR.***

(continued from page 12)

EXCEPTIONS TO THE SCHEDULE

Thur., November 24—Sat., November 6 — No Recreation—Thanksgiving Holiday

RECREATION FEE SCHEDULE
September 6 — December 17

	TERM	ANNUAL
Faculty/Staff/Family	\$ 25.00 per person	\$ 50.00 per person
Alumni/Family	\$ 50.00 " "	\$100.00 " "
Community	\$100.00 " "	\$200.00 " "
Daily	\$ 5.00 " "	\$200.00 " "

* PAYMENT ACCEPTED: Cash, check, charge (charges done at cashier's office D101)

A2	B2
A1	B1

Auxiliary Gym Layout

GROW AS A NCAA SPORTS REPORTER
WHILE THE NORTHEASTERN NCCA DIV
I BASKETBALL PROGRAM GROWS.

Join the "independent"

ALLSTATE
INSURANCE COMPANIES

0137

EARN EXTRA CASH NOW!!

the Allstate Telemarketing Unit has
part-time positions available

- * all shifts available
- * \$5.55 per hour
- * flexible hours
- * complete paid training
- * no cold calling

FOR FURTHER INFORMATION CALL:
MICHELLE LEHMAN at 402-7092

Allstate Insurance Company
Allstate Plaza South G1C
Northbrook, Illinois 60062

WE ARE AN EQUAL OPPORTUNITY EMPLOYER
AND WE ENCOURAGE WOMEN & MINORITIES TO
APPLY.

SCHOOL BEGINS AT BECK'S *

0108

SPECIAL HOURS DURING THE RUSH PERIOD ARE:

588-2770

We Carry A Full Line of
Supplies for Every Need

WE ACCEPT:



and

PERSONAL CHECKS

with PROPER I.D.

TUESDAY 9/6	8:30-7:00
WEDNESDAY 9/7	8:30-7:00
THURSDAY 9/8	8:30-10:00
FRIDAY 9/9	8:30-5:00
SATURDAY 9/10	8:30-1:00
MONDAY 9/12	8:30-10:00
WEDNESDAY 9/14	8:30-9:00
THURSDAY 9/15	8:30-8:00
FRIDAY 9/16	8:30-3:00
SATURDAY 9/17	8:30-1:00

Beck's

* Now inside Northeastern Illinois University

TEXTBOOKS • REFERENCE • CLOTHING • NOTEBOOKS • PENS • CARDS • BAGS • POSTERS

A Commentary: The Longest Shot of All

by James Rogers

Did you know Gordon Lamb built an NCAA Division I basketball program from scratch at the University of Texas at San Antonio? If any of you out there think that creating sports programs of this calibre isn't an accomplishment, then you don't know academic and spectator-sports politics Texas-style.

Lamb intends to develop the same kind of program at Northeastern, you betcha!

As a graduate of the Longhorn institution myself (Austin, BA Economics, '82), I can tell you that Lamb has weathered the tribulations of the finest political machine ever designed to destroy any well meaning academican-turned-administrator. And he isn't likely to fail at Northeastern either!

Did you know Gordon Lamb named Rees Johnson, formerly men's basketball coach at Wisconsin-at-Parkside and Augsburg College, as Northeastern's first full time basketball coach? Johnson's record got him the berth over such luminaries as the Bull's guard Norm Van Lier and Willie Little, former head coach of the University of Illinois-Chicago. Johnson is good, 386-182 since 1982.

What's more, Johnson has hired Dick Knar as Assistant Mens' Bas-

ketball Coach. Knar is formerly of the Academy at Annapolis and graduated from the U of I at Chicago. He has coached basketball and taught at U of Wisconsin's Eau Claire Basketball Camp. He was named AMCU-8 Academic All-Conference for 3 years at U of I.

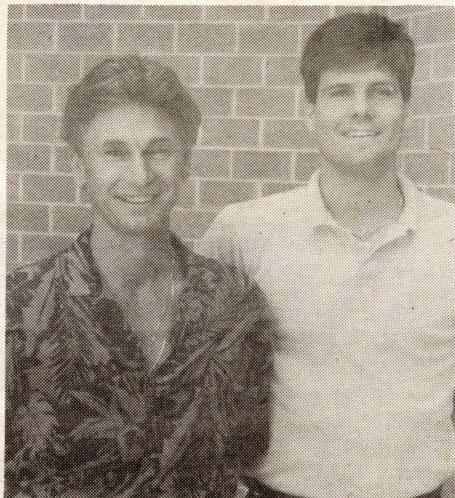
Working with a miniscule budget, with few perks to offer save some tuition waivers and billets for out-of-town athletes, Johnson and Knar appear lean and eager enough to carry out this NCAA Division I miracle.

It's about time we got a president at Northeastern who's got guts and can make decisions that are far-reaching. Calendar changes, NCAA efforts, and all the rest, will be perceived by some at Northeastern as a move on their comfort and territory and pocketbook.

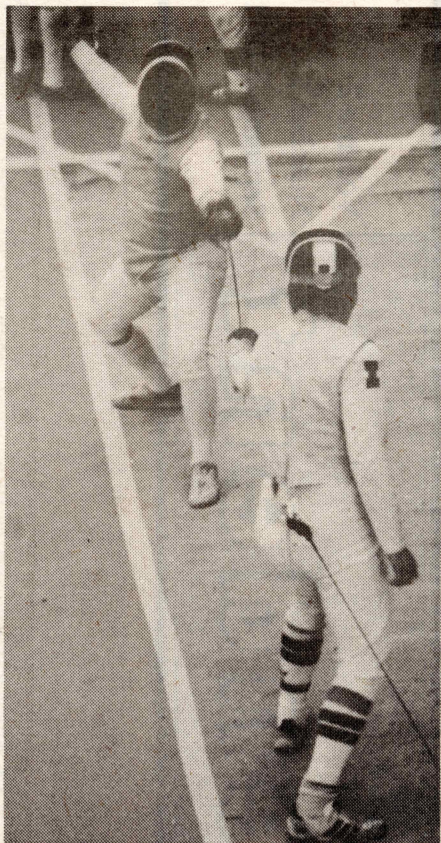
With the flack created by his effort to change the academic calendar from trimester to bring Northeastern in line with 98 percent of the nation's universities, Lamb has got to be feeling some personal discomfort. My guess is that he can handle it.

Long-shot artists, the people who gamble out these speculations, will tell you he has a 50-50 chance to pull off whatever he tries. After all, who among us at Northeastern has a portfolio of creating miracles lately?

Photos by James Rogers



Rees Johnson and Dick Knar.



FENCING STATISTICS: Northeastern Illinois University was host to 904 athletes from 47 states entering 1400 events during the 9 days of competition June 18-26. There were 125 officials, coaches and referees present.

**WOMEN'S VOLLEYBALL
SCHOLARSHIPS
AVAILABLE**

— Women's Basketball —
**YOUR INVOLVEMENT
IS NEEDED**

*Please Contact Coach Fogel
Phys. Ed. Bldg. / Ext. 5533
PRACTICE BEGINS OCT. 15*

POST ADVERTISING MATERIALS
ON CAMPUS. WRITE: COLLEGE
DISTRIBUTORS, 33 PEBBLEWOOD
TRAIL, NAPERVILLE, IL 60540.

LETTER PERFECT...TERM PAPERS
AND RESUMES TYPED.
CALL 334-3232



RINGSIDE
SPORTS & DANCE BAR
5639 N. LINCOLN AVE.
CHICAGO, IL 60659 275-4660

SEPTEMBER 1988

OPEN 2 P.M.

HAPPY HOUR MON.-FRI. 2 p.m. to 7 p.m.

5639 N. LINCOLN AVENUE
CHICAGO, IL 60659
312-275-4660

HAPPY BIRTHDAY! SUSANA T., KRISTIN K.,
CHRISTINE R., SABINE S.,
LIZ F., GAIL A., SEAN H.

HAPPY BIRTHDAY! MARY BETH., JEFF N.,
SUE W., NORMA T.

sun	mon	tues	wed	thurs	fri	sat
	12 FIRST DAY OF ROSHHASHANA VIDEO NITE! 1st FEATURE STARTS AFTER 9 PM DRAFT BEER - .75¢ DURING MOVIE	13 CC DRINKS \$1.00	14 TANQERAY DRINKS \$1.00	15 TURTLE RACES \$100.00 IN PRIZES 1st RACE STARTS AT 8 PM	16 DJ BALOONING FOR BUCKS! \$ \$ \$ \$ \$ CASH PRIZES	17 DJ + END OF SUMMER BASH! ANYONE WEARING BEACH ATTIRE - 1 COMPLIMENTARY DRINK HULA HOOP + LIMBO!
18 PARTIES ON SUNDAYS	19 VIDEO NITE! 1st FEATURE STARTS AFTER 9 PM WELL DRINKS \$1.00 DURING MOVIE	20 SEAGRAMS 7 DRINKS \$1.00	21 YOM KIPPUR GRANT'S DRINKS \$1.00	22 TURTLE RACES \$100.00 IN PRIZES 1st RACE STARTS AT 8 PM	23 DJ + COLLEGE NITE STUDENTS & FACULTY FREE DRINKS 8 PM - 10 PM	24 DJ + LADIES MUG NITE 1st 25 LADIES RECEIVE A FREE MUG + FAVORITE DRINK
25	26 VIDEO NITE! 1st FEATURE STARTS AFTER 9 PM WATERMELON DRINKS .75¢ DURING MOVIE					

ZENITH

Data Systems

ZENITH | data
systems

AUTHORIZED DEALER

Contact:
Computer Advantage
David Hume
777-9401

WHEN TOTAL PERFORMANCE
IS THE ONLY OPTION

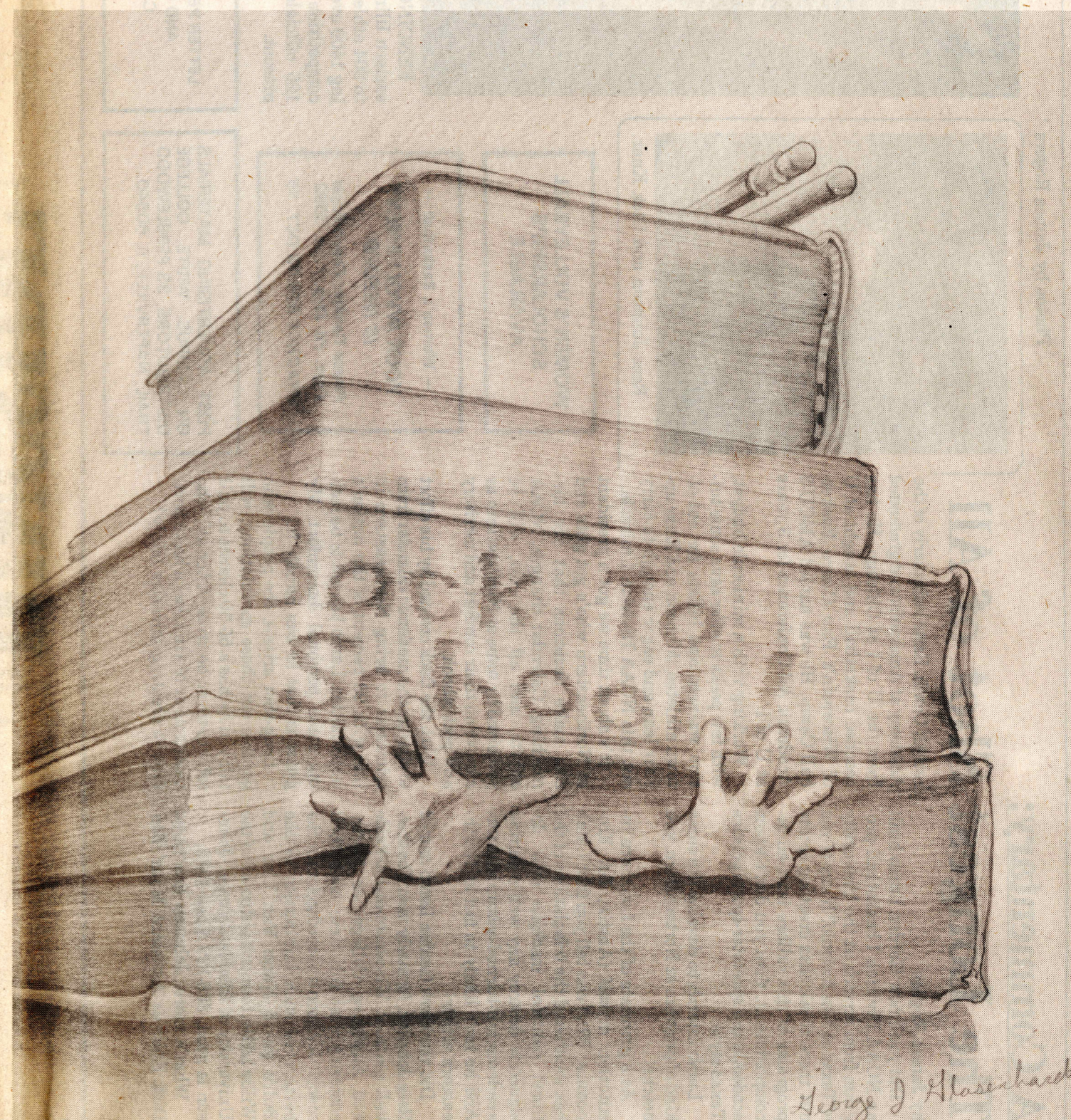
As faculty, staff or student of
Northeastern, you can take
advantage of the **new, low**
educational pricing for
the PC compatibles.

Educational Account Representative
Terry D. Schevker
312 / 745-2142

The Northeastern

independent

Volume 2
Number 1
September 12, 1988



Career and Job Guide

independent September 12, 1988

A

Student Employment: A Necessity

by Ilene Sandman

"The Student Employment Office," said Gwen Miller, Statistical Clerk and Assistant to Anne Klein, Director of Student Employment, "is a vital and necessary part of Northeastern. Our students are most interested in working to supplement their financial resources. Since the majority of students at UNI are over 25, they have outstanding needs for employment in order to pay bills and support their children."

Student Employment offers three kinds of work for students who are enrolled for classes at least half-time. Students who receive College Work/Study Awards through the Financial Aid Office usually need to be enrolled for classes full-time. All Work/Study Awards must be obtained through Financial Aid first before a student can apply for a job in the Student Employment Office. The Work/Study jobs generally pay between \$3.35 and \$3.80 an hour, but students may not exceed their total work/study award that is allotted to them. Hours of work cannot exceed 20 hours in any work-week. The jobs range from maintenance to career-related and are filled as needed in the different departments at the University.

Student Aides are students who are placed from the Student Employment Office, to various departments throughout the University just as Work/



Photo by Steve Boom

Study Students are. The rate of pay is the same and the hours allowed to work are also the same. Work hours are set at not more than 20 hours per week because time must be given for attending classes and doing homework. Students who are interested

in applying for Student Aide jobs may do so directly with Student Employment.

Miller and Klein assist students seeking College Work/Study and Student Aide jobs. The third kind of employment offered at Student Employment is handled by Luis Burgos and Phil Sparber and is Off-Campus employment. A student must be enrolled at least half time to apply for Off-Campus work and the pay rates and job types vary widely. Hours also vary and there is no limit of hours a student can work an Off-Campus job (unless it's Off-Campus College Work/Study, but that's unusual). "There are many opportunities for off-campus jobs so students can subsidize their educational needs," said Burgos.

Students seeking employment may request placement assistance. Student Employment Office hours during the work week are Monday through Friday, 9am to 6pm and Thursdays from 9am to 4:30pm during the spring and summer terms.

The staff of the Student Employment Office places students on jobs every day of the work week. "We move students," said Klein, "and we care because we know how difficult it is to go to school. Most students have pressing expenses and bills that must be paid regularly while they are at the University. Students are encouraged to ask Student Employment for help. That's what we are here for!"

"Welcome Back to School Concert"

presents

Sept. 20 Throw Mama from the Train
Sept. 27 Raw
Sept. 29 Sign of the Times

Horror Month:

Oct. 11 Freaks
Oct. 13 TBA
Oct. 20 Hell Raiser
Oct. 25 Poltergeist III
Oct. 27 Halloween

**INTERVIEWING FOR NEW MEMBERS
CALL EXT. 3859**

SPONSORED BY CCAB

Career and Job Guide

B

independent September 12, 1988

IMPORTANT NOTICE

REGISTRATION NOW OPEN FOR UNI JOB PLACEMENT SERVICES

UNI seniors anticipating graduation in December 1988 should register now for job placement services offered through UNI's Career Development and Placement Office (CD&P).

Services include:

- Resume and interview preparation workshops
- Individual Job Search Counseling
- Individual resume evaluation by CD&P staff
- * Computer matching of graduates to job opportunities
- * Access to on-campus recruitment interviews in fall '88
- * Valuable free handouts to highlighting job search approaches and ads by employers seeking candidates

(* These services not available unless registration form is on file in CD&P Office.)

Registration involves completion of single page data sheet (3 to 5 minutes).
Visit CD&P Office, B-117, as soon as possible or call:

583-4050, ext. 3119

967-1700
MICRO COMPUTERS INC.
6304 W. Oakton St.
Morton Grove, IL. 60053
1-800-426-6242

WELCOME

666-4058
BUSINESS COMPUTER SOLUTIONS
921 W. Van Buren St.
Chicago, IL. 60607
1-800-221-6676

OFFERING SPECIAL DEALS TO WELCOME NEW CLASS OF 1992

CALL OR COME IN FOR A FREE DEMO - BRING THIS AD TO CLAIM YOUR SPECIAL FREE GIFT



**Leading
Edge**



MODEL D2 AT

- 80286 6/8/10 MHZ CPU
- 640 K RAM (EXP TO 1MB)
- 1X1.2 MB FLOPPY
- IBM COMPATIBLE EGA CARD
- 12" MONO MONITOR
- 101 KEY BOARD
- MS DOS 3.2 & G.W. BASIC
- LE WORD PROCESSING
- 6 SLOTS (4X16 BIT)
- 1 SERIAL & 1 PARALLEL
- 20 MONTH WARRANTY

MODEL D XT

- 512 K RAM
- 1X360 KB FLOPPY
- SERIAL/PARALLEL PORT
- GRAPHICS VIDEO CARD
- MONO AMBER MONITOR
- LE WORD PROCESSING
- MS DOS 3.2 & G.W. BASIC
- 20 MONTH WARRANTY
- OPTIONS
- 20 MB OR 30 MB SYSTEM

AUTHORIZED DEALERS AND SERVICE CENTERS

LEADING EDGE AND LOGO MODEL "D" ARE REGISTERED TRADE MARKS OF
LEADING EDGE PRODUCTS INC.

ONLY \$1369

ONLY \$769



HYUNDAI



MODEL 286C AT

- 80286 8/10 MHZ CPU
- 640 K RAM (EXP) 1MB
- 1X1.2 MB FLOPPY DR
- EGA CARD
- CLOCK CALENDAR
- SERIAL & PARALLEL PORT
- 6 SLOTS (4X16 BIT)
- 101 KEY BOARD
- MS DOS 3.2 & G.W. BASIC
- 18 MONTH WARRANTY

MODEL SUPER 16T XT

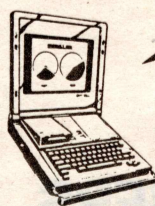
- 8088-2 TURBO PROCESSOR
- 8 OR 4.77 MW2 CPU
- 640 K RAM
- 360 K FLOPPY DR.
- CLOCK CALANDER
- PARALLEL/SERIAL PORT
- MULTI VIDEO CARD
- 84 KEY BOARD
- MS DOS 3.2 & G.W. BASIC
- ELECTRIC DESK W.P.
- 18 MONTHS WARRANTY

AUTHORIZED DEALERS AND SERVICE CENTERS

ONLY \$1039

ONLY \$639

FREE DUST COVER WITH PURCHASE OF COMPLETE SYSTEM



ZENITH
**data
systems**

LAP TOPS

INTRODUCING SUPERSPORT AND SUPERSPORT 286 MODELS

- ZFL-184-2
- 20 MB HARD DISK
 - 720 K 3.5" FLOPPY

ONLY \$2795

- SUPERSPORT 286
- 20 MB HARD DISK
 - 1.44 MB 3.5" FLOPPY

ONLY \$3725

eazy pc™

- INTRODUCING
- XT COMPATIBLE
 - DUAL 3.5" DISKS
 - 14" B & W MONITOR
- INTRODUCTORY SPECIAL

ONLY \$899

FREE LIBRARY CASE WITH BOX OF 10 x 360K 5 1/4 DISKS ONLY \$10

PRINTERS

- EPSON ALL MODELS
- FORTIS 24 PIN
- CITIZEN ALL MODELS
- ALL OTHER LEADING BRANDS

MONITORS

- SAMSUNG RGB COLOR MONITOR
- SAMSUNG EGA COLOR MONITOR
- HYUNDAI EGA COLOR MONITOR
- ZENITH FTM VGA COLOR MONITOR

HARD DRIVES

- SEAGATE ST 225 20MB W/KIT **\$265**
- SEAGATE ST 238 30MB W/KIT **\$295**
- SEAGATE ST,251 40MB W/KIT **\$395**

ALL OTHER ACCESSORIES AND ADD ONS AVAILABLE AT BARGAIN PRICES

*We provide technical support and after/sales service by our team of fully
qualified and experienced technicians. Prices subject to change without notice.*

0134

Career and Job Guide

independent September 12, 1988

C

Sophomores, Juniors and Seniors Invited to Fall '88 Career Information Night

UNI Students—all majors—have an opportunity early in the fall '88 trimester to evaluate career possibilities in two of the nation's largest and most "job-abundant" industries: Retailing and Insurance.

"Career Information Fairs" for each industry are scheduled as follows:

1. "Careers in Retail Management" will be hosted by UNI on Thurs., Sept. 29 between 12:30-1:50 p.m. in the Golden Eagles Room (next to "Center Stage" info. booth in Village Square). Eight to ten prominent retailers (see below) will give retail management career perspective to all students who stop by to chat or ask questions. Atmosphere strictly informal. Attending to date: J.C. Penney,

K-Mart, Osco, Saxon, Target Stores, Walgreens, and others.

2. "Careers in Insurance" will occur on Tues., Oct. 4 between 12:30-1:50 p.m. in Commuter Center Room 217. Eight to ten representatives from major companies will discuss or answer questions relating to careers in claims adjustment, underwriting, sales of policies and other financial products, and actuary. Attending to date: Allstate, CNA, Mass. Mutual, Metropolitan Life.

Since these two industries employ so very many college graduates in the U.S., undecided or curious UNI students have everything to gain by stopping by to see what the companies have to offer.

U.S. Government Agency to Present Overview of Career Opportunities

The U.S. Bureau of Alcohol, Tobacco and Firearms has scheduled an on-campus presentation of career opportunities available to UNI graduates.

Time/Place:

Wednesday, September 28, 1988

AT&F is attempting to interest UNI students in its Special Agent and Inspector positions, available now and in the future.

Sophomores, juniors and seniors (all majors) are invited to attend the informal session. All inquiries con-

cerning qualifications, duties, and responsibilities are welcome.

Students should know in advance that some functions of these professional positions are regarded as possibly incurring personal risk (common to many law enforcement related occupations). However, the positions pay well (especially with overtime considerations) and are typically viewed as personally rewarding.

U.S. Citizenship and ability to pass a physical examination are requirements for both positions.

"Employer Day '88" Brings Jobs Opportunities to UNI Campus

UNI's 2nd annual "Employer Day," a job fair for 88-89 graduates, is scheduled for Tuesday, October 11, 1988 in Alumni Hall, 9:00 a.m.-3:00 p.m.

It will be the largest and most significant job placement event of the fall trimester.

More than fifty area employers are expected to coverge on campus seeking business and liberal arts candidates for a wide range of entry-level jobs.

Tom Camden, Author and Job Search Expert, to Speak at UNI Campus in September

Tom Camden, co-author of the local classic *How to Get a Job in Chicago*, will address seniors and other interested students on job finding strategies for the Chicago job market.

Time and Place:

Thurs., Sept. 22, 1988

Alumni Hall, 12:30-1:50 p.m.

Camden, in a sort of key-motor role to kick off the fall '88 recruitment season at UNI, will discuss such factors as the job seeker's attitude, motivation and game plan; effective methods to identify and research prospective employers; and preparation of resumes and other tools vital to generating job interviews.

Camden is knowledgeable, entertaining and inspiring. He spoke to a

Preliminary lists of attending employers will be available in the Career Development & Placement Office, B-117, beginning September 12. (Periodic updates will be printed at roughly weekly intervals.)

Interested seniors and graduate students should be sure to have resumes prepared by the end of September. More details will be forthcoming in the next issue of the "independent".

HAMBURG HOUSE at Book Store

*STUDENT DISCOUNT
S.O. Word Perfect Software/12 Languages

September 12, 13 & 14

PHONE JEFF TATAR at 769-0066
Limited Quantity / Free Demo Disc

JOIN THE independent



It's everything you never expected car repairs to be.

**Peterson & Kimball
SHELL**

3401 W. Peterson

- Exclusive Nationwide Warranty
- We Specilize In Foreign Car Service
- We Employ Certified Technicians
- All Repair Work Fully Guaranteed

★ 24 HR TOWING & ROAD SERVICE AVAILABLE ★

OPEN 24 HOURS

267-6222

PLEASE CALL FOR AN APPOINTMENT



Lube, Oil Change & Filter

\$14.95

**20 Minute
EXPRESS!**

Most U.S. Cars & Many Imports
& Some Light Trucks

FREE SAFETY CHECK!

INCLUDES: • Chassis lube • Up to 5 qts. Shell brand motor oil • New oil filter • Other parts & service extra if needed • Diesel oil capacity & filter type may result in extra charges.

With this coupon in advance only thru 7/3/88
Not valid with any other coupon offers

Front Disc or
Rear Brake
Service

\$59.95

Most U.S. Cars
With This Coupon

INCLUDES: New front disc pads or rear brake shoes, Resurface rotors, repack front wheel bearings, inspect calipers, master cylinder, hydraulic system & emergency brake. Metallic pads & grease seals extra.

With this coupon in advance only thru 7/3/88
Not valid with any other coupon offers

54 (2)

**PROTECT YOUR DRIVING PRIVILEGES
WITH AUTO LIABILITY INSURANCE**

COMPULSORY INSURANCE LAW HAS PASSED

**CALL NORTH BRANCH INSURANCE
539-4939 for a quote**

**CHI-TOWN'S #1 TOYOTA DEALER
4 YEARS IN A ROW OFFERS THE
BEST SALES AND SERVICE TO
OUR NORTHEASTERN NEIGHBORS!**

0095

0095

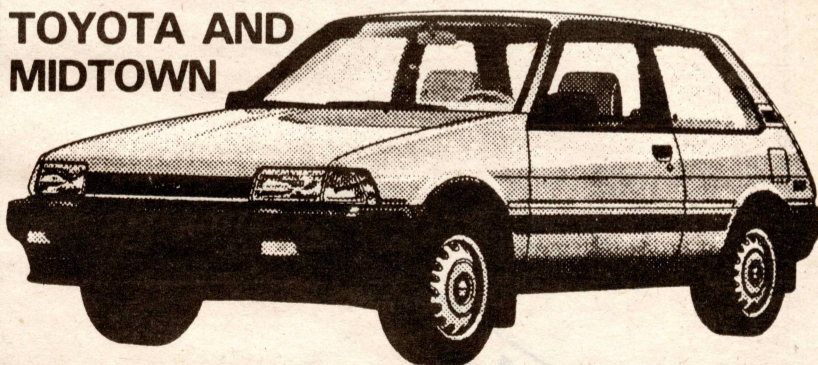
Class of '88
OF . . . 88

**GET A NEW
TOYOTA CAR
VAN OR TRUCK**

NO MONEY DOWN!

AFFORDABLE FINANCING FROM

**TOYOTA AND
MIDTOWN**



NOW YOU CAN APPROACH YOUR FUTURE IN A BRAND NEW TOYOTA CAR, VAN OR TRUCK. WITH NO MONEY DOWN! MIDTOWN'S SPECIAL FINANCING TERMS FOR GRADS CAN PUT YOU ON THE ROAD TO MANY CAREER MILESTONES IN STYLE . . . IN A NEW TOYOTA! SEE US FOR DETAILS.

OR COME IN AND LET MIDTOWN HELP YOU FINANCE A QUALITY FOREIGN OR DOMESTIC USED CAR.

**MIDTOWN
TOYOTA**

**CHI-TOWN'S
#1 TOYOTA
DEALER**

MON-THUR 9-9
FRIDAY 9-6
SATURDAY 9-5

2700 N. CICERO

622-6300

DON'T...



Co-Curricula

Join
the
independent

TRASH

this Fall Trimester!

**BUILD A
r Activities Transcript''**

**CALL JAMES ROGERS
EXT. 3811
(or come by E-049)**

Northeastern Activities

September 12, 1988

Student Senate

The Student Senate represents the student body through elected officers and senators. The officers of the Student Senate are the president, vice-president, secretary, and treasurer. Elected officers must make sure that all legislation of the Student Senate is executed and enforced.



Photo by James Rogers

Barry Shimelfarb and Donnette Tocwish go through their lines under the watchful eye of running crewmember Bonnie Tocwish. The play is "Present Tense" and the date and the time of performance is September 21-24 at 7:30 p.m. in the State Center (F-wing). For information call extension 3750. Students admitted free.

Student Activity Fee

Students registered at Northeastern pay a fee to generate funding for the many activities associated with campus life. The student activity fee supports the operation of the Student Government and programs sponsored for the benefit of students.

Health Service Evening Hours

The Northeastern Health Service (G-138, West of Beck's) has extended its hours of operation into the evening.

Monday through Thursday 7 a.m. to 10 p.m.
Friday 7 a.m. to 5 p.m.
Saturday 8 a.m. to 12 noon

A registered nurse is on duty at all times to monitor blood pressure, to provide health and nutrition counseling and to medically assist the university community. The Health Insurance program is now being administered by Health Service. For information call extension 3454.

Student Activities

Northeastern has recognized student organizations which provide opportunities to socialize, conduct activities and accomplish tasks of mutual interest. These groups are extremely diversified and cover a range of interests that include social issues, governance, entertainment, the arts, service to others, hobbies, recreation, religious views, etc.

Each fall, a Student Activities Festival is held to introduce new students to the officers, members, and programs of the various student organizations. Students who participate in these organizations believe that they are part of the "here and now" and that their involvement has been significant.

Here, students are able to state personal strengths and weaknesses and set realistic short and long term goals. At present, the Northeastern Journal of Performing Arts and the "independent" are beginning a pilot project to develop a co-curricular transcript. This document lists the history of activities a particular student has to his/her credit. Students may inquire at the Student Activities Office by calling 3868.

Student Government

The Student Government of Northeastern Illinois University allocates and audits the expenditures realized from student activity fees and coordinates the use of campus facilities for recognized student organizations.

The Student Government of Northeastern Illinois University represents students in matters pertaining to student welfare, student activities, student participation in University affairs, University planning and administration, and student opinion.

The Student Government consists of the Student Senate, Judiciary and Senate Subcommittees. The Senate also appoints or elects students to various University committees.

Senate Election Petitions Available

Northeastern students will go to the polls on Tuesday and Wednesday, October 18-19 to elect 12 Student Senators to a one-year term.

Students interested in being candidates can obtain a petition of candidacy from the Student Activities Office (E-218), the Student Senate Office (E-210) or the Board of Governors Office (E-207).

One vote for only one candidate may be cast at these locations:

Village Square:	9 a.m. to 7 p.m. on Oct. 18-19
Inner Cities	9 a.m. to 7 p.m. on Oct. 18
Studies:	9 a.m. to 5 p.m. on Oct. 19
El Centro:	2 p.m. to 7 p.m. on Oct. 18
	2 p.m. to 5 p.m. on Oct. 19

Information is available by calling these extensions: Student Activities Office, 3868; Student Senate Office, 3860 or the Board of Governors Office, 3886.



Photo by James Rogers

Maria Paredes, Vice President of the Student Senate, and Gus Gramas, Chief Justice of the student Supreme Court, wish each other luck for this new fall trimester. Each is active in other activities on campus. Paredes is an undergraduate and Gramas is finishing a Masters in Linguistics.

Standing Committees

The Student Fees and Allocations Committee and the Charter Review Board meet to discuss student government business.

The Student Fees and Allocations Committee establishes policies for the distribution of student activity fees and allocates these funds each year to qualified student clubs and organizations. The Charter Review Board reviews and recommends either suspension or approval of any student organization's charter to the senate.



The Fresh Alternative

0080

SUBWAY
Sandwiches & Salads

Inquire about our Special Discount on Party Subs

ANY FOOT-LONG SUB OR SALAD **\$1.00 OFF** ANY FOOT-LONG SUB OR SALAD

The Fresh Alternative
SUBWAY
Sandwiches & Salads

4845 N. Western
Chicago, IL 60625

784-5782

Offer Expires

Beautiful Flowers for all Occasions



Est. 1898

Bell's
FLOWERS

"ONE DOLLAR ROSES"

5630 N. Pulaski Rd.
Chicago, IL 60646

All Phones:
(312) 478-0091

0120

Northeastern Clubs

September 12, 1988

G

ACCOUNTING ASSOCIATES

An association of students interested in accounting who have an interest in enrolling in the new College of Business and Management. Call 2849.

ADVOCATES FOR ACCESSIBILITY

A group of disabled and able-bodied students who work to improve the educational, social and active roles of disabled students. Call 3814.

ALLIANCE OF STUDENT SOCIAL WORKERS

Increase interest in Human Services, generate an awareness of the varying and diversified areas that Human Services includes. Call 2829.

ANTHROPOS

The club promotes the understanding and study of all areas in anthropology through films, slides, and speakers. Call 2774.

APOCALYPSE

Apocalypse sponsors poetry readings of poets in the United States and publishes prose and poetry magazines. Call 3804.

ART CLUB

The Art Club sponsors discussions, socials and drawing workshops where students have the opportunity to work with live models every week. Call 2914.

ASSOCIATION FOR CHILDHOOD EDUCATION INTERNATIONAL

Works toward the education and well-being of all children to promote desirable conditions, programs and practices in the schools—nursery school through the 8th grade. Call 2752.

BLACK CAUCUS CLUB

Informs students and the UNI community of the need for political, educational, social and economic awareness and change for the purpose of upgrading the African-American experience on this campus and in the international community of Black People. Call 3131.

BLACK HERITAGE CLUB

Provides historical and contemporary documentation, lectures and entertainment to enlighten students, faculty and staff of the myriad of contributions to America and the world by people of African descent. Call 3131.

BLACK HERITAGE GOSPEL CHOIR

Through the musical ministry, the BHGC affirms and teaches the historically rich gospel tradition originated and evolved from the Southern African-American experience. Call 3152.

BLACKS-IN-LAW AND CRIMINAL JUSTICE

The purpose of this organization is to involve members in assisting the Black and minority communities, by using acquired skills and tools for the advancement of economic, political, educational and social institutions for Black and minority people. Call 268-7500.

CHEERLEADING CLUB

Means to enrich the spirit on campus; to inform fellow students of the school's activities and to create another option for students to actively participate in school activities. Call 2533.

CHIMEXLA STUDENT UNION

Although the Chicano experience is varied, whether we call ourselves Tejanos, Mexicanos or Chicanos, we are one people with a common bond that transcends factionalism and dissension. Call 3165.

CIRCLE K

To emphasize the advantages of the democratic way of life, to promote good fellowship and scholarship. Call 2555.

CLUB ITALIANO

Fosters a better understanding and appreciation of the Italian culture, provides practical experience, and develops leadership and responsibility. Call 2676.

COLUMBIAN STUDENT ASSOCIATION

To promote and enrich the Columbian culture, history and education for the betterment of the Columbian students and the Northeastern community. Call 3296.

COMMUTER CENTER ACTIVITIES BOARD (CCAB)

CCAB is the liaison between students and entertainers who perform on the campus. Call 3858.

CONCERNED STUDENTS ORGANIZATION

Provides organized activity, a medium to enhance and integrate all educational concepts. Call 268-7500.

COUNSELOR EDUCATION STUDENT ASSOC.

To promote development and personal growth among students, alumni and faculty in the Department. Call 2848.

DATA PROCESSING MANAGEMENT ASSOC.

Fosters a better understanding of data processing in the business world. Call 2793.

EARTH SCIENCE CLUB

Provides activities in the science of the earth, for earth science majors and science oriented students. Call 2536.

FRENCH CLUB

This club seeks to stimulate and intensify interest in French studies by offering students taking French various opportunities to meet informally and converse in French. Call 2671.

GEOGRAPHY CLUB

Emphasizes the study of geography and environmental studies in relation to current events and problems. Call 2621.

HELLENIC STUDENTS ASSOCIATION

The association's purpose is to preserve and promote Greek culture at Northeastern. Call 2635.

"independent" UNIVERSITY NEWSPAPER

This bi-weekly student newspaper is dedicated to teaching all phases of newspaper and computer desk-top publishing to students who wish to join. Call 3811.

HIGH SCHOOL OUTREACH PROGRAM

A student club whose members host high school student groups to the Northeastern campus. This program is now being administered by the Journal of Performing Arts. Call 3811.

MUSLIM STUDENTS ASSOCIATION

To help the university community understand the meaning of Islam and develop a better understanding of Islam among people. Call 2548.

NORTHEASTERN CHRISTIAN COMMUNITY

This club promotes a beneficial community among evangelical students. Call 5115.

NORTHEASTERN JOURNAL OF PERFORMING ARTS

This student media club reports the performing arts activities of all groups on campus through its publication. NJPM-TV, the television arm of NJPA, is organizing for on-campus video broadcasting. Additionally, the club will put together a Video Yearbook each spring. Call 3811.

POLISH STUDENT ALLIANCE

To promote educational, cultural and social activities that provide Northeastern students with a broader view of the Polish heritage. Call 2677.

POLITICAL SCIENCE CLUB

To instill in its members both a realization and a mature understanding of current political issues. Call 2712.

PSYCHOLOGY CLUB

To explore and promote interest and understanding in various areas of psychology. Call 2588.

QUE ONDEE SOLA (Spanish newspaper)

A student newspaper devoted to raising the political consciousness of the Latino community with a focus on Puerto Ricans. Call 3805.

FM RADIO—WZRD

WZRD provides an alternative radio service to emphasize the needs and the news of the community in which we live. Call 2861.

SKI CLUB

Meets the needs of interested students who wish to investigate different areas of skiing not covered in regular classes. Call 3536.

SOCIETY FOR THE ADVANCEMENT OF MANAGEMENT

Call 2784.

SPANISH CLUB

Promotes the study of the Spanish language and Hispanic cultures. Call 2677.

STAGEPLAYERS

To promote interest and education in the field of dramatic arts. Call 2938.

STUDENT COUNCIL FOR EXCEPTIONAL CHILDREN

Encourages fellowship and understanding among teachers or concerned persons interested in the exceptional child. Call 2822.

STUDENTS FOR ISRAEL—HILLEL

Experience the culture of Israel through speakers, films, social gatherings and celebrations. Call 2681.

TAU KAPPSEPSILON—TKE

To achieve brotherhood through the performance of service and participation in group activities. Call 3832.

UNI DANCE ENSEMBLE

Given to the art of dancing and performance in all its forms. Call 3010.

UNI MARKETING CLUB

Offers marketing students hands-on experience with service projects in the field. Call 2978.

UNION FOR PUERTO RICAN STUDENTS

To promote an appreciation of Puerto Rican culture and history. Call 2718.

UNIVERSITY BIBLE FELLOWSHIP

A student evangelistic organization dedicated to the task of campus evangelism. Call 4412.

VIETNAMESE CLUB

Addresses the welfare and activity needs of Vietnamese students at Northeastern and the surrounding community. Call 2773.

WILDERNESS SOCIETY

To expand our awareness and understanding of nature. Call 3536.

0112

5541 N. Kedzie, Chicago

267-4320



ANTHONY LUCCHESI
Proprietor

"Fast Carry Out
Service"

Phone
Orders
Accepted

0111

CV's
Fast Food and Carry-Out

BRYN MAWR & KIMBALL

Quality Food & Fast Service

BREAKFAST — LUNCH — DINNER
Sit Down or Carry Out

588-8135

Northeastern

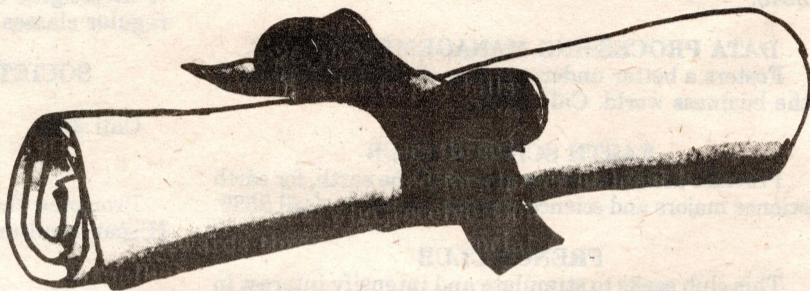
New Car Guide

independent September 12, 1988

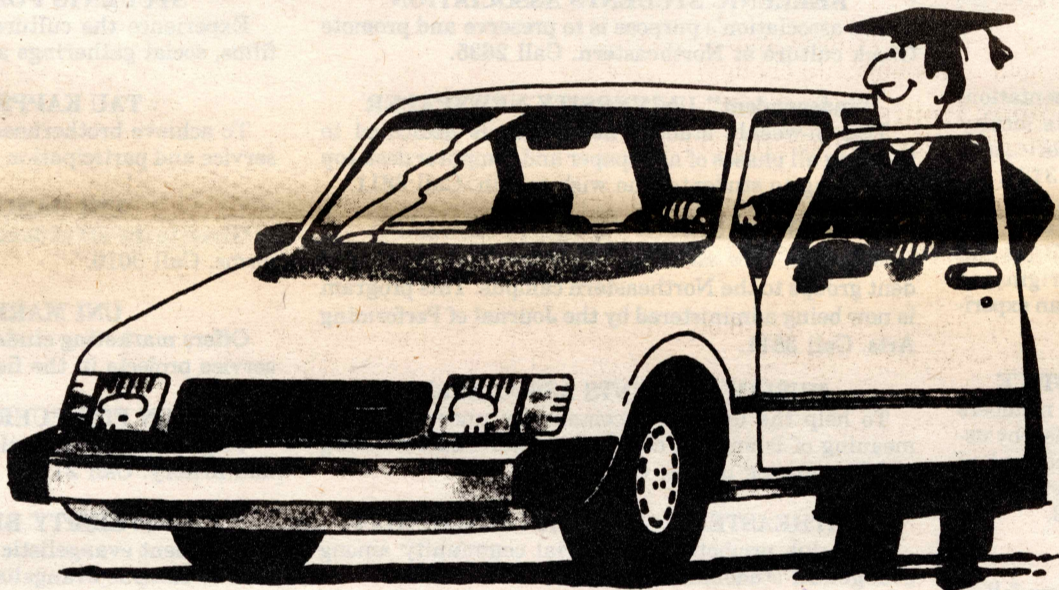
H

0096

ONCE YOU HAVE ONE OF THESE



IT'S AMAZING WHAT DOORS WILL OPEN.



GET \$400 FROM FORD AND PRE-APPROVED CREDIT FROM FORD CREDIT.

If you've graduated, or will graduate, with a Bachelor's or advanced degree between October 1, 1987 and January 31, 1989, take advantage of the open door policy at BERT WEINMAN. You may qualify for \$400 from Ford and pre-approved credit from Ford Motor Credit Company. To qualify for pre-approved credit, you need: (1) verifiable employment beginning within 120 days after your vehicle purchase; (2) a salary sufficient to cover normal living expenses plus a car payment; and (3) if you



**Ford Motor
Credit
Company**



have a credit record, it must indicate payment made as agreed.

The \$400 from Ford is yours whether you finance or not. Keep it or apply it to the purchase or lease of an eligible Ford or Mercury vehicle.

For all the details, contact us or call 1-800-321-1536. But hurry. This limited time offer is only available between March 1 and December 31, 1988. Take advantage of the Ford/Mercury College Graduate Purchase Program now.

DEALER NOTE:

In Michigan
substitute this
toll-free number:
1-313-540-9890.

BERT WEINMAN

