

2-6-1989

Independent- Feb. 6, 1989

Don Price

Follow this and additional works at: <https://neiudc.neiu.edu/independent>

Recommended Citation

Price, Don, "Independent- Feb. 6, 1989" (1989). *The Independent (1988-present)*. 17.
<https://neiudc.neiu.edu/independent/17>

This Newspaper is brought to you for free and open access by the NEIU Student Newspapers at NEIU Digital Commons. It has been accepted for inclusion in The Independent (1988-present) by an authorized administrator of NEIU Digital Commons. For more information, please contact neiudc@neiu.edu.

Planning for trees shows progress

by Don Price

In a recent meeting with Dr. Tom Green, plant pathologist for the Morton Arboretum, Vice-President Donn Bichsel discussed several items concerning the future plans for the endangered swamp oak trees near the P.E. building (page 1, Jan. 23 *independent*).

"He's planning a complete tree and plant inventory," Bichsel explained. "It's an unbelievable effort. He's going to locate each tree and use five variations of condition to determine age and health. He'll attempt to determine their life expectancy. He'll also assist us in formulat-

ing a long-range plan for maintenance, trimming and similar activities."

As reported in the last issue, Professor Bill Howenstine of the Geography and Environmental Studies Department had submitted a proposal for an "Experimental Urban Natural Area" to Bichsel early in January. This proposal has been given to Green for his evaluation and possible inclusion in the overall planning process.

Howenstine's cover letter to Bichsel and Joseph Kish, director of Physical Facilities, states that "I am especially appreciative of the concern which you have manifested for preservation, or

even rehabilitation, of what is left of the grove—a welcome change from years of administrative neglect. The proposal to use the consultative services of Tom Green of Morton Arboretum is an excellent step forward to this regard. My commendations to the administration for pursuing this!"

Bichsel is considering the formation of a committee to work with the existing Landscape Committee to implement Green's recommendations. "We'll decide who we would like to work on this, how many should be involved and what role each person will play."

While planning and evaluation have already begun, Bichsel added that "we have a time frame which will go into late summer, so that we can identify disease factors while the trees are in full foliage. As Professor Howenstine's plan calls for, we may have seniors and graduate students working with Dr. Green as a learning experience."

Bichsel concluded with a smile, "I think we're going to have a good team on this."

THE NORTHEASTERN

n d e p e n d e n t

Volume 2 • Issue 9 • February 6, 1989

Northeastern Illinois University

UNI Homecoming Week promises spirit and fun

by Kathy Dimmitt

Many students think of homecoming during the fall, and connect it with thoughts of football and cold weather. They may be surprised to learn that at UNI, plans are already in the works for a busy homecoming week in just a few weeks.

According to Phil Trocchio of the Homecoming Committee, "This is perhaps one of the first efforts in over ten years to have a homecoming. Faculty, students and alumni are pulling together in their efforts to make this a homecoming to remember."

The excitement kicks off early with a week of indoor tournaments. On Tuesday, Feb. 7, the focus will be on basketball in the cafeteria. On Thursday, Feb. 9, a billiards contest will be held in the game room. The following Tuesday, Feb. 14, features an electronic darts match in the cafeteria, and a table-tennis contest in the game room concludes the games on Thursday, Feb. 16.

Next on the schedule is a concert at 8 p.m. on Thurs-

day, Feb. 23 in the P.E. building. The band Information Society will be on hand, where their show will include their hit single, *I Want to Know What You're Thinking*.

UNI's Golden Eagle will meet the Roosevelt Waves in a homecoming contest at 7:30 p.m. on Friday, Feb. 24. A parade is planned as part of the halftime festivities.

Homecoming activities wind to a close with a semiformal dance at 8 p.m. on Saturday, Feb. 25, at the North Shore Hilton in Skokie, IL. Bo Diddley, one of the original rock 'n' rollers, is scheduled to appear. Admission is free for UNI students and \$5 for non-students.

The theme of this year's homecoming is "unity, tradition and commitment." As Trocchio adds, "We really want to have some school spirit. We want to show that Northeastern isn't just a commuter school."

1989 STUDENT SENATE OFFICERS ELECTION RESULTS JANUARY 24 & 25

PRESIDENT	TOTAL	PCT.
Phil Trocchio	597	68.8%
John Clarke Finley	253	29.2%
* Julius Jackson	14	1.6%
* Robert Douglas	1	0.1%
* Ronald Gubrud	1	0.1%
* Jesse Jackson	1	0.1%
* D.H. Lawrence	1	0.1%
	868	

VICE PRESIDENT

Julius Jackson	558	57.2%
* Eugenia Katsules	414	42.4%
* Gus Gramas	1	0.1%
* Catrice Green	1	0.1%
* Phil Trocchio	1	0.1%
* Jeff "Sparky" Willgale	1	0.1%
	976	

TREASURER

John Garcia Souchet	610	72%
Mark "Lucky" Clover	230	27.2%
* Eugenia Katsules	6	0.7%
* William Dotson	1	0.1%
	847	

SECRETARY

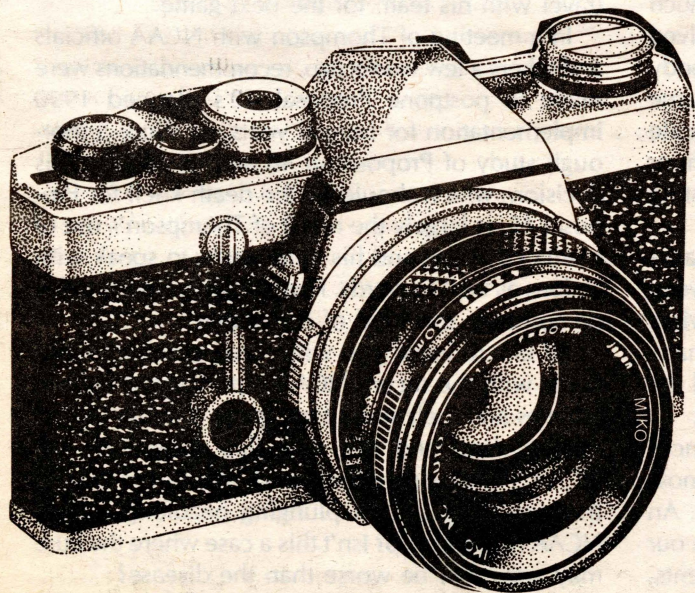
Ed Zamora	514	58.1%
Evelyn Woodson	367	41.5%
* Eugenia Katsules	2	0.2%
* Ronald Crenshaw	1	0.1%
* John Garcia Souchet	1	0.1%
	885	

* WRITE-IN

	VALID	INVALID	TOTAL
MAIN CAMPUS	919	1	920
C.I.C.S.	45	1	46
EL CENTRO	50	1	51
	1014	3	1017

VOTES TABULATED BY:

Robert Fischer	Galen McGee
Gus Gramas	Walter Williams



ATTENTION ALL SHUTTERBUGS!

Enter the *independent's* Spring Photo Contest, and you can win \$100! The rules are simple:

1. The theme of the photo must pertain to Spring.
2. The photo must be suitable for reproduction in black and white.
3. You must be a UNI student.
4. The work must be your own.

Entries must be received by 5 p.m. on Friday, March 3, 1989. There is no entry fee and winning entries will be published in the March 20 issue of the *independent*.

Entries will be judged by the *independent* editorial staff and all decisions are final. Good Luck!

Editorials

Letters

Celebrate black history!

As a fellow student, I would like to remind everybody that February is Black History Month nationwide. It is an advantageous time to increase our awareness of black culture in the U.S. and around the world.

Black-African culture and history can be traced back centuries before recorded time, to the earliest origins of man. It is a safe bet that a large part of the U.S. population (of ALL ethnic groups) does not know much of the history of Black Americans beyond the Civil War. Black Americans not only fought in the Civil War, but the Revolutionary War, as well. Some blacks-only platoons were cited for tremendous courage in World War I and World War II.

Did you know that two blacks served in the U.S. Senate in the 1870's? It should also be noted that on Martin Luther King Jr.'s birthday, Jan. 16, 1989, three black councilmen were sworn into office in Selma, Alabama, the very place where Dr. King organized his historic march for civil rights.

Many Americans are aware of the black success stories in sports, politics and entertainment, like Jackie Robinson, Rev. Jesse Jackson, and Sidney Poitier. However, Afro-Americans have also made great contributions in the military, literature, medicine, business and education, to name a few. These people worked to help ALL of society, not only one part of it. People like Martin Luther King, Jr. and Harold Washington come easiest to mind, but what about names like Booker T. Washington, Phyllis Wheatley, Maya Angelou and Dr. Ralph Bunch?

Black History Month is not just about Afro-Americans, but people like Bishop Desmond Tutu, Nelson Mandela, and people still struggling for civil rights, justice and human dignity. Ultimately, no matter what your race we are ALL struggling for those same civil rights, justice and human dignity. Those are the goals we share, that unite us all, and that's what makes Black History Month so important to everyone.

Valerie Gordon

The Northeastern independent Volume Two • Number Nine

Editor-in-Chief..... Don Price
Business Manager..... Holly Propst
Photography Editor..... Steve Boom
Sports Editor..... Mike Solarte
Features Editor..... Kirk Liljewall
Layout..... Don Schnitzius
Contributors..... Kathy Dimmitt
Patrick Sanchez

The **independent** editors have sole authority governing all materials submitted. Editors of the **independent** serve as publishers of the newspaper; the University assumes no responsibility for the **independent** or views expressed therein.

The editors of the **independent** reserve the right to edit all copy, wherever and whenever deemed necessary. Editing implies that editors need not accept all of a submitted material for publication. The editors may or may not rewrite unsolicited material at their discretion. Good journalism standards shall and will be maintained.

PHOTOS submitted for publication become the property of the **independent**. Photos will be returned upon request, but will not be held for more than one week. Photos should include informative captions (six lines each maximum), typed, double-spaced, on separate sheets and attached to the page.

The **independent** retains all copyrights or material published herein; articles, photos, artwork, etc., may be reprinted only with the expressed, written permission of the editors, author(s), artist(s) or photographer(s) involved. Proper credit must be given to the **independent** as well as to the person(s) responsible for the original material.

Direct all correspondence "To the Editor," in care of this newspaper.

Copyright 1989. All rights reserved. **Northeastern Illinois University independent.**

Letters to the Editor
should be typed
and
no more than 250 words.

Vote fraud mars election

To the Editor:

This letter is in regards to one of our basic American freedoms as stated in the Constitution of the United States. It's a right the majority of people do not exercise. I include myself in this category every once in a while.

On Jan. 24-25, this university held Student Senate officer elections. As was my wont, I withheld my vote due to my personal belief that the candidates mentioned were not qualified to hold office. Some of the candidates were friends of mine, but I never wish to vote on popularity.

While one of the candidates was trying to persuade me to vote on Tuesday, Jan. 24, (he/she) casually mentioned that it really didn't matter whether or not I actually cast a ballot. (He/she) mentioned that someone would cast a ballot for me at El Centro (our other campus) and then stated how funny it would be when my Polish name showed up at what is mostly a Spanish neighborhood. He also mentioned a few other names

that would vote at El Centro so matter-of-factly that I took it to be true.

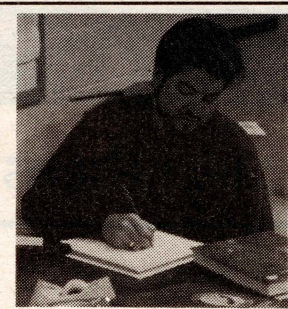
The right to vote is a very private issue. It offends me that someone would even suggest to me that they would take that right away, especially when I had already decided not to exercise it, as is also my right.

This candidate has won the position that (he/she) wanted to be elected to fairly. My name was not used to cast a ballot. However, I hope that this newly-elected official has more respect for his office than (he/she) has for an American citizen's constitutional rights.

Sincerely,
Frank Woitel
Management major

Considering the checkered past of some of Northeastern's election proceedings, we are hardly surprised at your charges, and we join with you in hoping that the individual in question is more ethical in office than in campaigning.

The Editor



Mental Floss by Don Price

Not every drama needs a hero, while others do

When I started researching my recent articles concerning the mini-furor over trenching through the grove of swamp oaks near the P.E. building, I had expected a David-and-Goliath story: a small band of determined environmentalists versus the juggernaut of university administration. I actually found a modern version of the old fable of the blind men and the elephant, where each felt a part of the animal and became convinced that the part was an accurate representation of the whole.

Since the original article appeared, a number of people have questioned the accuracy of some statements I was given, and there seemed to be a feeling that blame should be cast on *somebody*. I never got that feeling. There were no heroes and villains in this situation—just a lot of people with vested interests who happened to see one small piece of a very large puzzle.

This is not uncommon in any organization as large as a state university. So much goes on, so much money is spent and so many people are involved that it is almost impossible to imagine everybody seeing "the big picture" all the time. Casting blame for things which occur as a result of large-scale operations and not by conscious intent to slight or do harm to others makes as much sense as casting blame for the damage caused by a tornado.

In the controversy over the trees, it became obvious to me that better communication between all concerned parties would have helped alleviate many of the problems which developed. Fortunately, that communication is now occurring, and the outlook (at least, for the oaks) appears bright.

We all need to keep in mind that appearances can be deceiving, and that we don't always know as much about a situation as we think we do. An open mind and the courage to ask "why" are our best defenses against being swept up by events,

rather than our being in control of them.

Now that I've cliched you all to death...

Three cheers and a hearty round of applause for John Thompson, Georgetown University's outspoken basketball coach. In case you hadn't heard, he became enraged at the NCAA's recent Proposal 42, which would have forced high school students to maintain a 3.0 GPA as well as score a 700 or better on the SAT before athletic scholarships could be awarded. Proposition 48, currently in effect, requires that either criteria be met, but mandates the loss of a year of eligibility as a result.

Knowing of the disproportionately low test scores which many economically-disadvantaged ethnic groups receive, Thompson charged that Proposal 42 was, for all intents and purposes, racist in its effect. He called attention to his strong opposition by walking off the court after team introductions at the Georgetown-Boston College game and did not even travel with his team for the next game.

In a meeting of Thompson with NCAA officials and others a few weeks ago, recommendations were made to postpone Proposal 42's planned 1990 implementation for several years, to allow a thorough study of Proposition 48 and its effects. This decision, which should be the death knell for Proposal 42, is largely the result of Thompson's use of media coverage and his willingness to speak with actions as well as words. Few people in sports today demonstrate this kind of conviction.

I'd like to leave you with some pertinent questions: with the recent NCAA report about college athletes and their study time (page 2 of the Dec. 5 *independent*) and this new flap caused by the NCAA's short-sightedness and shoot-from-the-hip thinking, why is UNI plunging headlong toward NCAA membership? Isn't this a case where the cure may very well be worse than the disease?

Bulletin Board

Student employees receive pay hike

For the first time in eight years, student aides and students in work-study programs will see an increase in their hourly wages.

Melvin Terrell, vice-president for Student Affairs, recently announced the wage increases, which took effect on Jan. 3. "A recommendation came to me to

increase wages for these students shortly after I arrived here. Since the state voted down a tax increase, students have had to bear a certain percentage of funding through a tuition increase. It makes sense to use part of that money to increase students' wages."

Terrell predicts that the increase will

be positively received. "I expect students to rally around this decision. It's long overdue."

On the possibility of future increases, Terrell commented, "I would like to see the next increase coming earlier than eight years from now. We may examine the situation every two years, in terms of state funding and tuition levels, to see how our students can benefit from these funds."

Terrell views actions such as these to be an important part of his job. "Students are the most important part of our

campus," he observed. "Anything I can do to improve their living conditions or situations is a priority."

	Old	New
Level I	\$3.35	\$3.50
Level II	3.50	3.65
Level III	3.65	3.80
Level IV	3.80	3.95

UNI professor and son indicted for sexual abuse

Professor Bernard Brommel of the Speech and Performing Arts Department and his son Bradley were indicted Tuesday, Jan. 24, on charges of sexual molestation of the son's two stepchildren. The assaults allegedly took place while the younger Brommel's wife was at work, and occurred between the spring of 1987 and April of 1988, according to a spokeswoman for State's Atty. Richard

M. Daley.

Charges range from criminal sexual assault, a Class 2 felony with a possible sentence of 3-7 years, to aggravated criminal sexual assault, a Class X felony with a possible sentence of 6-30 years.

The pair's arraignment is Feb. 15, at which time a trial judge will be assigned and pretrial procedures will begin.

Academic Advisement Office sponsors 'Advisor of the Year Award' program

The Office of Academic Advisement is accepting nominations for the Advisor of the Year Award. All students with Academic Advisors are invited and encouraged to nominate advisors who they believe are outstanding in the art of advising and who their "advisees" feel are worthwhile candidates for this distinction.

A committee will review all nominations made by advisees, and will select the Advisor of the Year based on why advisees think their advisor deserves the award.

The award will be presented to the

recipient in March, and the advisees will be invited to attend.

Nomination forms are available in the Office of Academic Advisement, room 109, and a staff member from the office of Academic Advisement will be available in Village Square for nominations on Tuesday, Feb. 14 from 10 a.m.-12 p.m. and Tuesday, Feb. 21 from 12:30 p.m.-2 p.m.

The deadline for submissions is March 1, 1989.

Any questions regarding the award may be directed to the Office of Academic Advisement, Ext. 3004.

Neighbor's New Health Foods House!

- UNI Student & Faculty Discount 10% with I.D.
- Muscle Builders/Sports/Fitness Energy Diets
- Natural Vitamins/Natural Snacks/Sandwiches
- Cold Pop/Juices/Herbs/Beauty Aids/Books

LEO NATURALS

3242 W. Foster Avenue / 267-0808

HOURS: 10 a.m.-8 p.m. — CLOSED ON SUNDAY 0157

Win Spring Break DARE! To Be A Winner



Just send us a photo of your most outrageous dare from the fun, new DARE game. Your dare may win you ...

One of three 1989

Spring Break Vacations for four worth \$5,000!

OFFICIAL RULES 1. NO PURCHASE NECESSARY TO ENTER OR CLAIM PRIZE. To enter, mail a 3"x5" or 4"x6" b/w or color (no slides) photo depicting a dare from the DARE game, together with your printed name/address on a 3"x5" card to **DARE Spring Break Contest, P.O. Box 8565, Westport, CT 06888.** Photo must be the original work of entrant and not have been published or publicly displayed. One entry per envelope. All entries must be received by 3/1/89. 2. Entries will be judged, from among all eligible entries received, on or about 3/1/89 by PMC, an independent judging agency, on the basis of originality (0-30 points), relevance to the DARE game (0-40 points), composition (0-20 points), photographic technique (0-10 points). 3. Three prizes will be awarded. Each will be a Spring Break trip for 4 consisting of air travel in continental USA from major airport closest to winners' residences; hotel for 5 nights; and related expenses up to a maximum retail value of \$5,000. Winners must sign and return an Affidavit of Eligibility and Liability/Publicity Release (and winners' travel companions, a Travel

Publicity Release) within 5 days of notification or prize awards will be void. No substitution or transfer of prizes. One prize per family. 4. Contest open only to U.S. residents, 18 or older at time of entry, except employees (and their families) of Parker Brothers, its affiliates, subsidiaries, agencies, and professional photographers. Void where prohibited. Taxes are the sole responsibility of the winners. Not responsible for illegible, damaged, lost, late, misdirected mail, or returned prize notifications. Entries become property of sponsor with all rights, including the right to edit, publish and use any photo without further consideration or payment to the contestant. No correspondence, telephone calls or other inquiries about entries will be entered into, nor will photos be acknowledged or returned. By submitting an entry, you accept and agree to be bound by these rules and all decisions of the judges, which are final. 5. To obtain winners list, send a self-addressed, stamped envelope by 3/1/89 to: DARE Winners, P.O. Box 2925, Saugatuck Station, Westport, CT 06880.

\$3.00 REBATE WHEN YOU BUY A DL-7 CAMERA

BUY a Fuji DL-7 camera between Jan. 1, 1989 and Dec. 31, 1989. Request must be received by Jan. 30, 1990. RECEIVE a \$3.00 rebate in the mail.

SEND 1) THIS completed rebate certificate AND 2) your dated cash register receipt with the price paid circled PLUS 3) the UPC code from package.

MAIL TO: Fuji DL-7 Rebate Offer P.O. Box 117 Young America, MN 55399

Name _____ Apt. _____

Address _____

City _____ State _____ Zip _____

PLEASE NOTE THESE ADDITIONAL TERMS FOR BOTH OFFERS: 1) Offer good only in the U.S.A. 2) Rebate good only on formats indicated herein. 3) Proofs of purchase may not be mechanically reproduced and must accompany your request. 4) Offer void where taxed, prohibited or otherwise restricted. 5) Employees of Fuji Photo Film U.S.A., Inc., distributors, wholesalers and retailers of Fuji Film and Cameras are not eligible for this offer. 6) Film offer good only on Fujicolor 24 or 36 exposure film for amateur use. Commercial users are not eligible. 7) Fuji is not responsible for lost, late or misdirected mail. 8) Please allow up to 60 days for delivery.

\$1.50 REBATE WHEN YOU BUY 3 ROLLS OF FUJI FILM

BUY 3 packages of Fujicolor Film, 24 or 36 exposures between Jan. 1, 1989 and Dec. 31, 1989. Request must be received by Jan. 31, 1990. RECEIVE a \$1.50 rebate in the mail. Maximum rebate is three (3) rebates per family, address, organization or location.

SEND 1) THIS completed rebate certificate AND 2) your dated cash register receipt with the price paid circled PLUS 3) the UPC panels from each of the 3 packages of Fuji Film, 24 or 36 exposures with the words "Manufactured for the U.S.A." Your rebate is based on proofs-of-purchases sent at one time.

MAIL TO: Fuji Film \$1.50 Rebate Offer P.O. Box 5676 Kalamazoo, MI 49003-5676

Name _____ Apt. _____

Address _____

City _____ State _____ Zip _____

Human Performance Lab offers many special health testing, exercise plans

Dedicated to education, research and community service, the Human Performance Laboratory (HPL) is located in the P.E. building and offers far more than the typical programs available at local health clubs.

In addition to professionally-guided exercise, low-impact aerobics and strength training programs, the HPL also offers a Community Health Enhancement Program. Coordinator Elga Smilt-nieks describes this program as "designed to help men and women work toward optimal fitness through a program of regular, supervised physical activity. Exercise is prescribed on the basis of physiological laboratory testing and evaluation."

During February, the HPL is providing a special health plan for \$170 (regularly \$299). The plan includes: a graded exercise stress test; a blood analysis for coronary risk profile; a complete blood count; specialized cholesterol level testing; hydrostatic weighing (to determine the percentage of fat in body composition); spirometry (to determine lung function); vision and hearing screening; use of the facilities; and participation in the Community Health Enhancement Program.

Hours for exercise programs are 5:15-7 p.m. and 6:15-8 p.m., Monday-Thursday. For more information, contact the HPL at 583-4050 or x4778 on campus.

French theatre program celebrates bicentennial of French Revolution

On Feb. 16, at 8 p.m. in the Auditorium, the Department of Foreign Languages and Literatures will host an evening of French theater in honor of the Bicentennial of the French Revolution. The internationally recognized French actor Eric Chartier will perform dramatic readings in French from the historical works of Jules Michelet. The event is being co-sponsored by the Services Culturels Francais and is presented under the auspices of the French-American Committee for the French Bicentenary.

Tickets are \$3 for the general public and may be purchased in advance by

contacting the Department. UNI students, faculty and staff may attend free. Proceeds will benefit the French Scholarship Fund.

Representatives of the French government will be in attendance on the day of the performance, and will give a brief welcome and opening remarks. Northeastern is one of the few colleges in the area which is organizing this kind of celebration in honor of the French bicentennial. It is also the only school in the area which will be hosting a performance by Chartier, and a sold-out house is expected.

Commentary:**Wisdom includes service to others**

by "Marco Presto"

Hello fellow students, and welcome to the *independent*. In this commentary, I want to introduce you to me—an irascible traveler and former editor of newspapers, who has found an empty desk in the bowels of the Commuter Center. I made a deal with the *independent* editor to impart wonderful pearls of wisdom and do an occasional article under my *nomme de plume*, "Marco Presto," while I await repair parts for my Tardis, in return for residency.

On to the wisdom stuff. Yes, I have found the two really important secrets of life. The first is coffee and beer. If you have coffee, you can wake up in the morning and face the world. After you get the first taste of coffee you have reason to live, to complete the ultimate search—to find a cup of coffee that tastes like it smells. Compared to this, everything else is minor.

When it comes to beer, there is only one beer that stands head and shoulders above all the rest, and that's a free beer. My Tardis has a seek mode that can locate a free beer within 100 parsecs.

(Note: the best free beer is served after 6 p.m. or sundown. I don't know why, it just happens that way.)

The second secret of life is to "Serve the Populace." Why? Because it makes you feel good. It gets rid of those guilt feelings you may have about being better off than your neighbor.

Around here, populace means the students, faculty, and employees of Northeastern Illinois University, especially the students. Serving the populace here is, in essence, being nice and helping each other get an education. Because if you don't, and we catch you, we are going to tell—EVERYBODY!

Case in point. I came to the Administration Building to register one Friday about 5:45 p.m. Although this was during registration week, the Admissions Office had been closed since 4 p.m.

The only sign explaining the hours was from the Summer '88 session. My problem was minor, and I could come back next week. However, another young lady wanted to get a book voucher approved at the Finance Office.

There were people upstairs in the vest-

ibule of the Finance Office, including the Director of Financial Services and some of his staff. They were sitting around shooting the breeze.

The young woman in question tried to state her case to a young man who answered her frantic pounding on the door; that she only wanted a book voucher approval, and she had come a long way on the bus (from the south side) just to get this document signed. The guy at the door will make a great bureaucrat someday, because he would not budge. The student mentioned that she could not come any earlier because she worked and someone could, or should (especially anyone in the Finance Office) be able to sign her voucher. I had to leave and didn't see the outcome of this incident.

This incident, while not earth-shattering or life-threatening, does highlight the point of the purpose of the university staff—that they are here for the students.

Everything about this university is directed, or should be directed at providing students every advantage in receiving a college education. True,

there are rules and regulations, but rules are not absolute, and regulations are only guidelines—they are not laws. It would not have hurt anyone to have validated the student's book voucher without a lot of hassle. Granted, this is only an example, and for all I know, someone did validate it, but if they didn't—well, shame on you!

UNI is a commuter campus. Consideration must be given for the Chicago traffic, people who work, and bureaucratic foul-ups. It's the tuition of the students who attend UNI that pay the salaries, heat, light, gas and everything else here. Sure, the feds and state legislature kick in a few million, but it's the thousands of students and their parents who put UNI on those tuition checks that keeps these doors open.

This is the populace that should be served. Sure they pay for it, but that doesn't mean they have to receive bad service. To quote a rich restaurant owner, "Treat your customers with respect and courtesy or they'll go away." In other words, be nice to us students.

Typing that needs no tutoring.

Students, your assignment today is to learn how to use the Smith Corona XL 2500 typewriter.

Ooops, don't get too settled in your seats. The XL 2500 isn't a very difficult study.

In fact, unlike most electronic typewriters, it's a downright snap to pick up.

The Spell-Right™ 50,000 word electronic dictionary adds new meaning to the word "simple."

WordEraser® erases entire words at a single touch.

WordFind® finds your mistakes before anyone else can.

The XL 2500 even makes correcting mistakes as easy as making them.

With the Smith Corona Correcting Cassette, you simply pop in your correction tape.

There are no spools to unwind...no complicated threading...no tangles.

Of course, we've also added lots of other fine features to the XL 2500.

There's full line correction, Auto Half-Space, Auto Center, even our Right Ribbon System™, which automatically prevents you from using the wrong combination of ribbon and correcting cassette.

Oh, one more feature we forgot to mention—the price. You'll be happy to hear that the XL 2500 is surprisingly affordable.

So you see, the XL 2500 won't just make your writing easier.

It'll also help you with your economics.



For more information on this product, write to Smith Corona Corporation, 65 Locust Avenue, New Canaan, CT 06840 or Smith Corona (Canada Ltd.), 440 Tapscott Road, Scarborough, Ontario, Canada M1B 1Y4.

Commentary:

Is faculty lounge haven or hideaway?

by James Glowacz

The faculty are now planning to take over the Heritage Room in the cafeteria as their private faculty lounge—for faculty and administrative and professional employees.

It would be only fitting, I should think, to provide our hard-working professors and A&P staff with a place to call their own. During the course of their long days on the job, they need some kind of refuge where they can take a break from their labors. It is rather unhealthy for them to be bent over the paperwork on their desks for such extended periods. You know, anyone who walks the corridors early in the morning or late in the day—or even in the middle of the day for that matter—would be positively moved by the sight of the workaholic

habits of our faculty and staff.

The life of the mind can be quite arduous. It can also get lonely. Sometimes you will even see a professor in his office talking to himself, for lack of company. A faculty lounge would provide a place for the faculty to socialize—with their own kind. It would be a place to carry on the great conversation, discuss the major works of Western and Eastern civilization—maybe even catch up on the latest gossip.

It has not yet been decided what sort of other-worldly motif or atmosphere this inner sanctuary from the hoi polloi should take on. Should it be something like a refectory, where there would be someone to deliver some uplifting spiritual reading, suitable for contemplation and the digestive processes? Should the

music department perhaps provide chamber music on certain days? Maybe Charlie Barber could entertain by his singing, guitar-playing, and doing his soapbox routine on why Northeastern's president should be impeached. Many of our faculty and A&P staff are pretty good at the song-and-dance form. Or perhaps the room's use could even aspire to the Greek model in Plato's Symposium.

Membership in this exclusive club is 35 bucks. All the rules have not yet been worked out. For example, there are a number of cases on campus where both the husband and the wife are on the payroll—would they be eligible for some kind of family discount? Or what if a professor or administrator wanted to bring in a guest from one of the lower castes—

a student, say, or a civil service worker? Introducing the common people into the mix would probably dilute the intellectual concentration. But, if the turnout to this faculty lounge is as great as the faculty's turnout to other faculty functions and university events in general, then there should be quite a bit of extra room for visitors.

The local pub, where the entire university population could hang out after hours, never established itself. But the faculty and A&P staff, in their snobbery masquerading as collegiality, are trying a different approach. Among segregationists and separatists of all kinds, there is something that loves a wall. Sometimes it turns out to be a prison of one's own making.

Winter 1989 SKILL-BUILDING MODULES PROGRAM

Sponsored by The Center for Student Development Northeastern Illinois University

A series of career awareness and personal growth workshops free to students, staff and faculty.

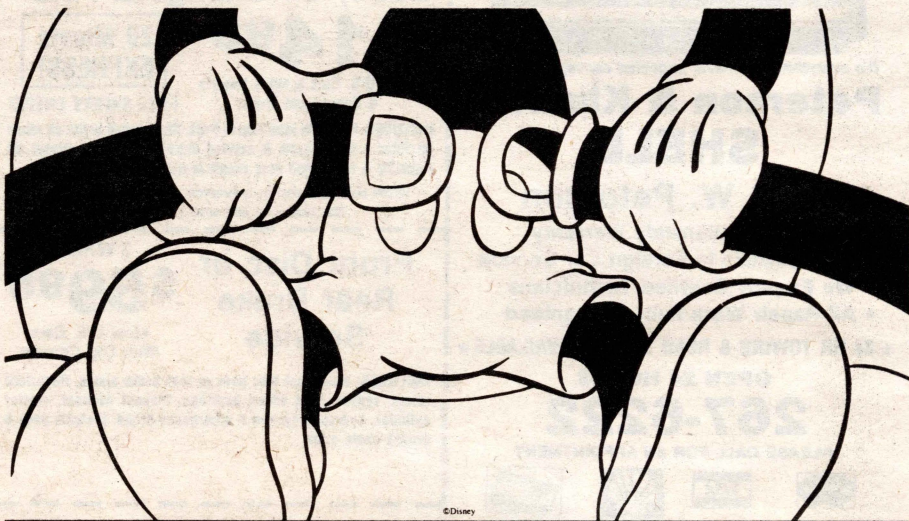
Date	Time	Room	Topic	Presenter	Office/Phone
Feb. 6-10	TBA	TBA	National Collegiate Drug Awareness Week (various seminars to be offered)	B. Bales	B-115/x3131
Feb. 6	12:30-1:30 p.m.	Lib. 3rd Fl.	Writing the Library Research Paper	E. Gawrych	Lib./x4599
Feb. 7	12:30-1:30 p.m.	CC-214	Taking Essay Tests	S. Leibman	2-046/x2682
Feb. 7	12:30-1:50 p.m.	B-117	Resume Workshop	* CD&P Staff	B-117/x3119
Feb. 7	12:30-2:00 p.m.	3-109	Resume Writing & Careers in History	B. Powers	4-085/x5120
Feb. 7	1:00-1:50 p.m.	CC-215	Taking Tests & Overcoming Test Anxiety (continues on Feb. 9, 14, & 16)	D. Duginske	B-115/x3131
Feb. 9	9:40-10:55 p.m.	3-109	Careers in Management	H. Akbari	0-024/x2896
Feb. 9	12:30-1:50 p.m.	B-117	SIGI Plus Orientation	* CD&P Staff	B-117/x3119
Feb. 9	12:30-2:00 p.m.	Lib. 3rd Fl.	Library Research: How To Do It	L. King	Lib./x4414
Feb. 14	12:30-1:50 p.m.	B-117	Job Search Workshop	* CD&P Staff	B-117/x3119
Feb. 15	10:00-10:55 a.m.	S-102	Careers in Earth Science	C. Shabica	S-148/x2533
Feb. 15	12:00-12:50 p.m.	Lib. 1st Fl.	Researching Employers & Companies: Library Resources	M. Hilburger	Lib./x4414
Feb. 15	1:00-1:50 p.m.	B-112	National Student Exchange (NSE) Program Information Session	F. Llacuna	B-115/x3131
Feb. 16	9:40-10:55 a.m.	S-113	Careers in Economics	J. Kokoris D. Bergan E. Stuart	S-225D/x2638 S-225E/x2577 S-225C/x2574
Feb. 16	12:30-2:00 p.m.	CC-215	Getting Things Done: Value Clarification, Time Management and Goal Setting	D. Helfand	B-115/x3131
Feb. 16	12:30-2:00 p.m.	CC-218	Women & Depression	O. Ruiz	B-115/x3131

Interested in a career in Corporate Media ? NETWORK with Corporate Media Producers !

Date and Time: Thursday, Feb. 9, 1989 7:00 PM Location: CC-218 (Commuter Center, 2nd floor)

Representatives from International Television Association (ITVA) Chicago Chapter will present a program on Corporate Media.

What is Corporate Media ? How can I break into the field ? What entry level positions are available ? What should I do to prepare for a career in Corporate Media ?



Buckle Up For Spring Break '89

CLASSIFIEDS

ADOPTION

Our young son needs a brother or sister. We are a loving couple with 1 child and unable to have more. We would like to adopt an infant. If you know anyone considering placing a child for adoption call us collect at 1-312-893-9662 or our attorney at 1-217-352-7491 (collect)

BABYSITTERS WANTED Nannies Midwest Ltd. 312-359-6246

PROTECT YOUR DRIVING PRIVILEGES with AUTO LIABILITY INSURANCE Compulsory Insurance Law Has Passed Call North Branch Insurance 539-4939 for a quote

Offering professional word processing, computer searches, and billing services. 334-2611 9:30 - 4:00

SPRING BREAK NASSAU/PARADISE ISLAND Package includes: roundtrip air, transfers, 7 nights hotel, beach parties, free lunch, cruise, free admission to nightclubs, taxes and more!!! Cancun packages also available!!! Organize small group...earn FREE trip. 1-800-231-0133 or (203) 967-3330

BRIGHTEN YOUR LIFE! MEET THAT SOMEONE SPECIAL THROUGH OUR SINGLES CLUB: INTRO SINGLES CLUB, BOX 3006, BOSTON, MA 02130.

1 bedroom apartment available 3/15 or 4/1, \$370 per month, heat & appliances included. Call Ron: 583-4050, ext. 2862, or 889-2819.

0111

CV's Fast Food and Carry-Out

BRYN MAWR & KIMBALL

Quality Food & Fast Service

BREAKFAST — LUNCH — DINNER

Sit Down or Carry Out

588-8135

GO FOR THE GOLD.

You've just about completed one big challenge—your degree. Ready for the next? Go for the gold. The gold bars of a Second Lieutenant in the Army.

It's no picnic. O.C.S. (Officer Candidate School) is a 14-week challenge that will make you dig deep inside yourself for mental and physical toughness. When you come out, you'll be trim, fit, a commissioned officer in the Army, and ready to exercise the leadership skills civilian companies put such a premium on.

Go for the gold. It could help you when you're ready to reach for the brass ring.

SGT WINGER 583-8671

ARMY. BE ALL YOU CAN BE.

0115



It's everything you never expected car repairs to be.

**Peterson & Kimball
SHELL**

3401 W. Peterson

- Exclusive Nationwide Warranty
- We Specialize In Foreign Car Service
- We Employ Certified Technicians
- All Repair Work Fully Guaranteed

★ 24 HR TOWING & ROAD SERVICE AVAILABLE ★

OPEN 24 HOURS

267-6222

PLEASE CALL FOR AN APPOINTMENT



Lube, Oil Change & Filter

\$14.95

**20 Minute
EXPRESS!**

Most U.S. Cars & Many Imports
& Some Light Trucks

FREE SAFETY CHECK!

INCLUDES: •Chassis lube •Up to 5 qts. Shell brand motor oil •New oil filter • Other parts & service extra if needed • Diesel oil capacity & filter type may result in extra charges.

With this coupon in advance only thru 3-15-89
Not valid with any other coupon offers

Front Disc or Rear Brake Service

\$59.95

Most U.S. Cars
With This Coupon

INCLUDES: New front disc pads or rear brake shoes, Resurface rotors, repack front wheel bearings, inspect calipers, master cylinder, hydraulic system & emergency brake. Metallic pads & grease seals extra.

54 (2)

Partners in Prevention problems on North

by Patrick Sanchez

Events planned by the UNI program **Partners in Prevention** (P.I.P.) for **National Drug Awareness Week** (Feb. 2-10), represent a midpoint of sorts for this federally-funded UNI program. In January of 1988, UNI received \$82,000 from **The Fund for Improvement of Post Secondary Education** of the U.S. Dept. of Education for the purpose of improving and expanding current alcohol and drug prevention and awareness programs. Additionally, Dean Kipp Hassell of Student Development estimates that the university has donated \$100,000 of staff and administrative time.

The two-year grant has prompted a five-part program at UNI, according to Hassell. As Barbara Bales, from the counseling office, explains the various components, "Faculty members are teaching about substance abuse within their classes." She also talked about the Ambassadors program, where "students are in a training course and then they're going to Lane Tech and Lakeview High Schools as well as different areas on campus doing liaison work." Speaking of the skill-building modules components, Bales said, "We have to do programming. Last term we did six different

programs related to adult children of alcoholics. We have an assessment component where about 700 students have been randomly sampled. We are getting the results on drug usage here' at Northeastern and then a lot of the program, which was to be geared on what our student needs are, is based on the assessment."

An external component also exists in which an outside evaluator comes in and determines what the progress has been on the grant.

The erratic action plans and programs produced by the programs organizers suggest that "drug awareness" may be a misnomer for some of the people associated with the program. To begin with, the scope of the drug problem (if any) at UNI and the targets for the efforts of the initiatives of the program have yet to be clearly identified. Dr. Nan Giblin, who is in charge of tabulating the results of the assessment survey, has indicated that the results will be available by the end of February—over thirteen months from the startup of the program.

A total of 650 students answered the 100-question survey. The mix of day to night students was 60%/40%, according to Dr. Giblin, who indicated that this was

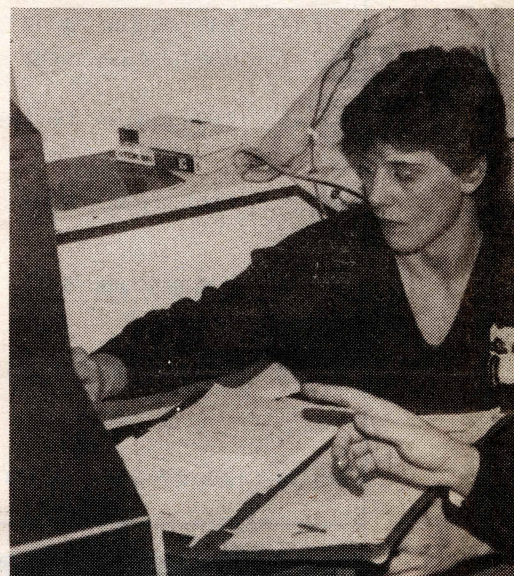
Anti-drug video pro no easy task for d

by Patrick Sanchez

Stubbornness, vacillation, travel, repose, and a large drink of iced tea—it's all in a day's work for video director and producer, Cindy Spina.

She was commissioned by **Partners in Prevention**, (P.I.P.) [see related article] in the last half of 1988 to produce a video which would air during National Collegiate Drug Awareness Week (Feb. 6-10). The video was produced as part of an independent study video class Spina was enrolled in. Managing to walk the fine line between artistic control and client requisites, Spina produced a smooth-flowing final product. Designed specifically to address the problems related to alcohol and substance binging, the video approaches the subject matter from various angles in a cohesive manner.

"I felt that I should do a [video] that relates to Northeastern students," explained Spina after viewing another video which dealt with the same material. She felt that Northeastern students represented a different type of student than the preppy fraternity beer parties illustrated on the other tape. "Northeastern is a commuter school and [its] students are going to engage in these activities or develop these problems off-campus," said Spina of her decision to use location shots of various area drinking establishments such as Bennigan's or



Cindy Spina discusses some technical points with help

the Snuggery.

Purposefully segmented, in order that students in transit would be able to derive some meaning or message from a small portion they may see, the video contains interviews with Northeastern students interspersed among characterized location shots. The interviews with UNI students yield some interesting answers and comments regarding the current alcohol and substance abuse problems of college students.

Getting people to respond to questions about drug abuse on camera was one of the hardest parts of making the

0215

The Ideal Summer Job!!!

Run Your Own Business

Next Summer

NO INVESTMENT
TRAINING PROVIDED

Call Rick at:

(312) 968-1924

ntion targets drug theastern campus

roughly the same ratio which exists between those groups on campus. All incoming freshmen were surveyed at freshman orientation and various randomly selected sophomore and upper classes were asked to complete a survey.

Also contributing to the lackadaisical appearance of the program is the fact that of seven official events planned by P.I.P., only three are open to the general student population.

A microcosm of this detached approach is illustrated by the deletion of subject matter relating to cocaine abuse in a Drug Awareness video scheduled to be shown during Drug Awareness Week. Discussing the conversation which took place regarding cocaine usage, in her video, Cindy Spina said, "They intimidated me that they had higher statistics on alcohol and pot usage but they did not provide the statistics."

When asked if she was in agreement with the decision, Spina recalled, "I feel it's [cocaine] a more extreme problem, but I didn't do this video for myself. Seven out of every ten people I talk to see the same thing I do. They see people going in groups into the bathroom and I was explaining this to them...cocaine is a very closet drug."

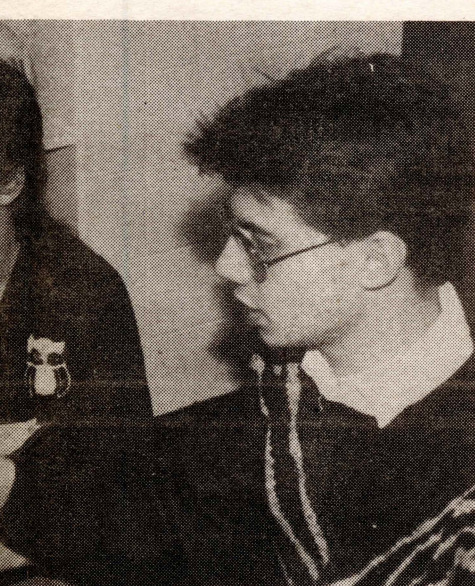
Spina's clients, Bales and Dr. Ron Glick, were asked about the absence of cocaine-related material from Spina's video. Dr. Glick responded by saying, "I don't remember that...I really don't. We may have decided to simply focus more on alcohol because it's so much more widespread and that also it would be easier for people to talk about and identify with. Cocaine is obviously a serious issue even if the numbers of those who abuse it are significantly lower than the number of those who abuse alcohol."

Bales responded to the question by saying that "the grant is primarily an alcohol awareness grant, although we are hitting different subjects on drug awareness. We will be having things on cocaine and I don't know why it's not there, because it is a big problem. We have little 'literature things' that we put pamphlets in and we have materials on cocaine there."

Questions still remain regarding the administration of different areas of the **Partners in Prevention** program. The independent will conduct further investigations regarding all aspects of this program and produce a followup story next issue.



roduction proves dedicated student



helper Don Schnitzius. (photo by Mike Solarte)

existent to the typical UNI student: "You're always going on to something else just when you get done with school; you've got an hour to take the bus if the bus isn't late, get in the car if the car works and get to the job or other project you have to do."

Although Spina does a good job in illustrating the various emotional and social pressures which could create or amplify a drinking problem, there are some inherent flaws in the treatment of substance abuse problems, the most notable being the absence of any information about cocaine abuse. "Originally, they [P.I.P.] told me I could touch on it [cocaine usage]," says Spina. However, when she showed up with the original video treatment (content outline) showing a scene in which cocaine was used, it was suggested by her clients that she not include it or just barely touch on it, if at all.

Irrespective of this thinning process, the video does make you think of the various casual factors which propel some college students to drink heavily. "After [the test] is done I'll do anything to relax," responds one student to a question about college-induced stress.

The video may be seen Tuesday, Feb. 7 or Thursday, Feb. 9 from 12:30-2 p.m. in room F109, when it is presented along with other student videos examining the problem of substance abuse at UNI.

video. The interview subjects came from two video classes taught by Dr. Karla Berry, the instructor who worked with Spina on this independent study project. "Some of these people were just looking at me like: 'don't even think of asking me to get up there'" says Spina of her troubles. "I only managed to get a third of them up there."

The stress of working and going to school creates a possibility that the typical UNI student may drink to relieve stress. When asked how to relax after a stressful day, one student suggested that relaxation time may be all but non-

Valentine Personals

14-004

Sherri K.,
You are a source of excitement, energy, and temptation. An honest friendship transcends all else. Together we shall get through this trial. Let's bond.

Tom L.

14-003

Dear Lisa Hernandez,
We, the brothers of Tau Kappa Epsilon, thank you for all the support. Thanks for being our Chapter Sweetheart 88-89.
HAPPY VALENTINE'S DAY!
The Brothers of the TKE

14-002

Dear Anthony,
JA CIE KOCHAM!!!
Happy Valentine's Day!
Love, Holly

14-006

Mario Noush,
To a very special person in my life. It's been a great pleasure getting to know you. Remember you can always count on me.
Your Secret Lover.

14-005

Dear Sergio Torres,
A very special person in my life. I just wish things would have worked out between us. Hope we can still be friends.
Happy Valentine's Day, Sweetie.
Sincerely, M & M

14-008

Phi-Rho's:
Happy Valentine's Day.
From the TKE's

14-007

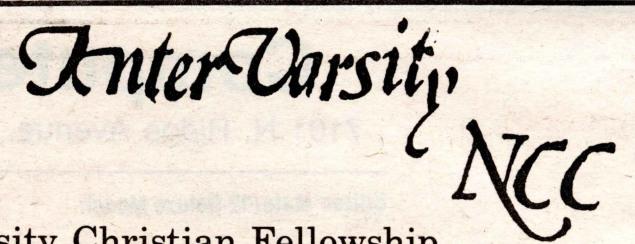
Penelope: All my love.
Happy Valentine's Day.

Boo-Boo

14-001

Cuddles,
1991 - "You better get used to it."
HAPPY VALENTINE'S DAY!
Love, Pretty Lady '69
P.S. Possibility for change—
Assassinate Emma Samms!

0214



InterVarsity Christian Fellowship
— Northeastern Christian Community
Invites you for a time of Bible study and fellowship.
Tuesdays: 1-1:50 p.m. — Rm. C-2071
Thursday Nights: 7-7:50 p.m.
Above the bookstore next to Student Activities
Prayer Meeting: Wednesday 8-8:50 p.m.
Second Floor Commuter Center
Next to the University Events Office
For More Info.

Ed or Lisa Pawlowski
509-0804

0130



THE HOT DOG STORE THAT'S A WHOLE LOT MORE!
USE OUR CONVENIENT DRIVE-THRU
CHICAGO-NORTH
6201 North Kimball, Corner Lincoln & Kimball (Across from Lincoln Village)
ALL PHONES: 583-1010
PHONE AHEAD AND WE WILL HAVE YOUR ORDER READY!
— **FREE** —
BUY 1 CHICKEN SANDWICH, LARGE FRY, LARGE DRINK —
GET 1 CHICKEN SANDWICH **FREE!**

Play captures spirit, grief of 'Beat Generation' hero

by Ilene Sandman

"He was one of them hopeless men. Nothin' you can do about the hopeless. Know what I miss more than anything now? The wind. One of them fierce hot dry winds that come from deep out in the desert and rip the trees apart. You know, those winds that wipe everything clean and leave the sky without a cloud. Pure blue. Pure pure blue."

Condensed from A Lie of the Mind
A stage play by Sam Shepard (1986)

Vincent Balestri, alumnus of the Goodman School of Drama in Chicago, portrays Jack Kerouac at the Organic Theatre Company's Greenhouse Production. Balestri also researched Kerouac's life with the assistance of Kerouac's widow, Edie Parker, and hence, wrote the play. On Sunday, Dec. 11, 1988, Balestri, as Kerouac, told the audience his feelings about writing: "I write from my heart. You've got to write from your heart." He loved jazz, partly because it symbolized freedom and wisdom to him, as well as the "honesty it demand(s) from the artist." (Greenhouse Production's Program)

Was Kerouac a hero? To many, very many, he was more—he was an idol, a reluctant idol. He was called the "Daddy of the Beats" as a result of the Media's distortion of who and what he was about. He was deeply wounded by this

mutant version of himself as a rebel's hero. And his book, **On the Road**, which was finally published in 1957, was considered written in favor of wandering, rejection of the Affluent Society, and of unbridled freedom and lack of obligation. Kerouac was enraged with this misinterpretation of his book, which Balestri as Kerouac says: "...was a kind of Huck Finn/Tom Sawyer adventure of me and Neal Cassady." Cassady died (drugs/liquor) before Kerouac died. But Kerouac, like Huck, went about his journey from his heart. If I am remembering correctly, Huck Finn made it. He, too, has been called a hero. So has Tom Sawyer, of a lesser kind—like Cassady? Cassady went to Kesey and the Merry Pranksters—not exactly the same as Leary and Ginsberg who opted for the "mystical way"—so they thought. And Kerouac, this drinking man of Buddhist belief, went, instead, like most heroes—alone. His main company—often his only company—was a bottle of liquor, like a "rosary" to his faith down the mystic path. He died, an unsung hero?—in 1960. He was 47 years old.

He lived and died as an alcoholic driven towards his passions with more force and more pain than can be imagined because of the media stunt to mutate the man who just wrote from his heart—and listened to a lot of honest music, and

believed in Buddhism, creativity, and love. Blame? No, no blame. It's too late for blame, and would be to no avail. But it's not too late to listen and to see this contemporary version of a Gilgamesh-like epic brought to fatal life on the stage by one single solitary man, who, like Kerouac, seems to take this journey alone. But in Vincent Balestri's case, he also takes us, the audience, with him, mesmerized to our seats, wishing we could **touch** him—this actor/writer/director/educator—Vincent Balestri, who **looks** like Kerouac, and who lives by these (his own) words: "The actor is the lighthouse of his country, civilization and age...He understands...history and religion. **He searches in total freedom of the imagination with his heart, soul**

and mind, the living being..."

After the play, one may feel an urge to just stop, outside, and if it's clear enough and dark enough, to just stand there and look at the starry, starry night...

...and wonder—has anybody heard? Is Jack Kerouac a hero? Does he care? Look at the stars; do they care? Is the artist who creates with her heart, soul, and mind, a hero? You are suffering the artist in you, Vincent. Suffer the artist. Suffer the men and women who create, and live, from their hearts, even though, in this writer's opinion, they are **not** the heroes. The heroes are the ones who have listened, and are listening still...

...and once I heard you, Vincent, I wondered if a storm would come that night. The wonder was deafening.

Black History Month Events

Feb. 7	Lecture by Dr. William Speller	12:30-2 p.m.	\$212
Feb. 9	Lecture by Lou Palmer	12:30-2 p.m.	\$212
Feb. 14	Lecture by Dr. Melvin Terrell	12:30-2 p.m.	\$212
Feb. 16	Lecture by James Brames	12:30-2 p.m.	\$212
Feb. 17	Performance by the Admaku Dance Troupe	12:30-3 p.m.	Unicorn

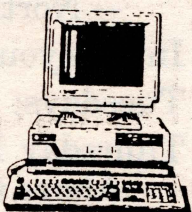
Computer Peripherals, Inc.

7101 N. Ridge Avenue, Chicago, Illinois 60645 - Phone: (312) 743-8383

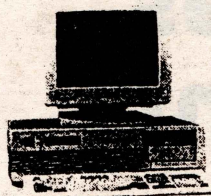
Citizen Mate/12 Deluxe Model:

\$1875

1 Meg Ram
40 Mg. Hard drive.
EGA plus Card
Mono Monitor
101 Keys
2 Ser., 1 Par.,
1 Mouse Ports
3.3 Dos & Basic.



AUTHORIZED CITIZEN DEALER



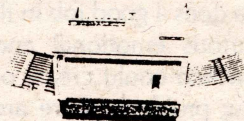
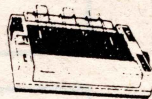
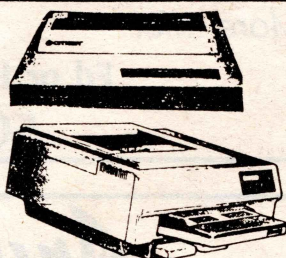
\$1899

AT-286 Compatible
640K Ram
1.2 Mg. Floppy
40 MG. Hard drive
EGA Card
EGA Monitor
Mouse
101 Keys.
Mul. I/O Card

All system comes with one year warranty: Part & Labor.

PRINTERS

NX-1000 \$199
KXP-1080I \$175
KXP-1091I \$199
120d \$175
180d \$199



OVER-110 \$1399
180D \$199
MSP-50 \$425
TRIB-124 \$499
TRIB-224 \$625

HARD DRIVES

ST-225 (Bare) \$229
ST-238 (Bare) \$249
ST-225 Kit/Cable \$2259
ST-238 Kit/Cable \$289
ST-251-0 (Bare) \$359
ST-251-1 (Bare) \$439
ST-4096 (Bare) \$639

ST-251-0 XT Kit/Cable \$389
ST-251-0 AT Kit/Cable \$489
ST-251-1 XT Kit/Cable \$509
ST-251-1 AT Kit/Cable \$589
ST-4096 XT Kit/Cable \$709
ST-4096 AT Kit/Cable \$789

ACCESSORIES

C.P.I. 1200 Baud Modem \$49
C.P.I. 2400 Baud Modem \$109
KRAFT KC-3 Joystick \$25
EGA Card with mouse \$169
6 Foot Printer Cable \$20
10 Foot Printer Cable \$29

A.B. Data Switch Box \$23.49
A.B.D.E. Switch Box \$27.99
Game Card for AT/XT \$25
Bonus 2S/2D disks 11pc. \$7.99
LIB-Case holds 10dsk. \$2.79
6 outlet surg. protector \$15

LEADING EDGE MODEL D XT

512K Ram
2 X 360 Floppy
Serial/Parallel Ports
MGP Card
Mono Monitor
Leading Edge Word Processor
MS-Dos 3.2 & G.W. Basic
20 Month Warranty



\$869

HYUNDAI MODEL SUPER 16T XT

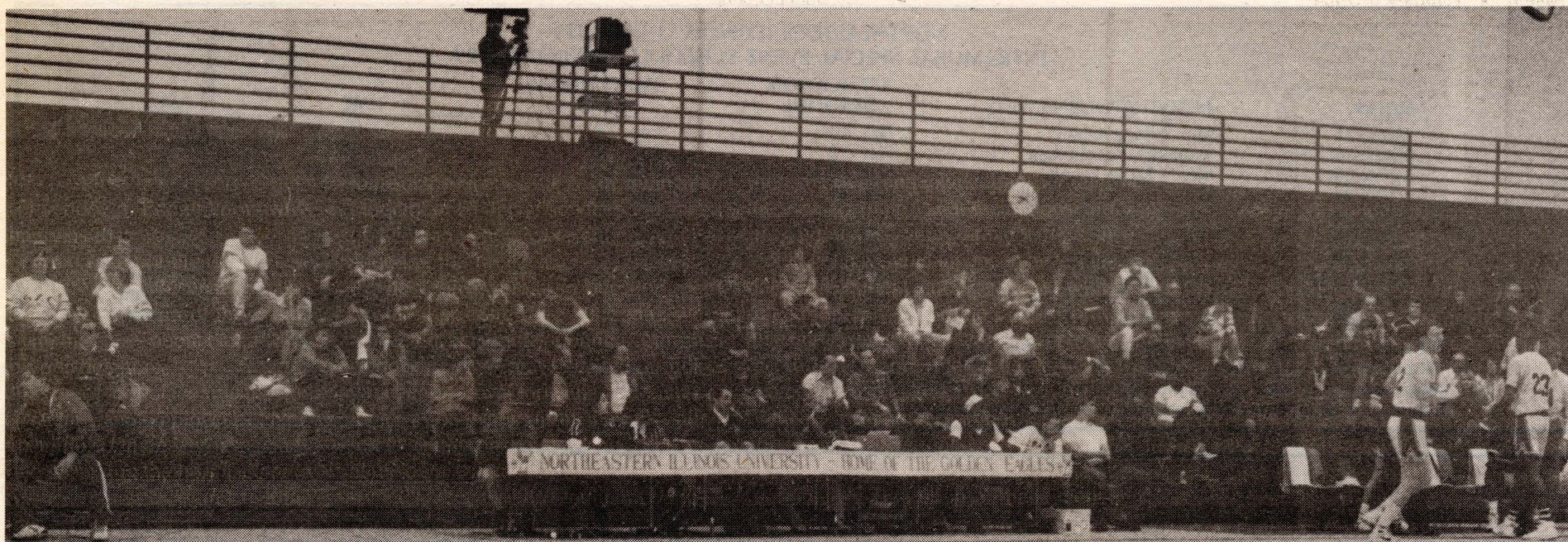
8088-2 Turbo Processor
8 or 4.77 MHZ CPU
640K Ram
360K Floppy
Clock Calander
Parallel/Serial Port
Multi Video Card
84 Keyboard

MS-Dos 3.2 & GW-Basic
Mono Monitor
Electric Desk W. Processor
18 Months Warranty
w/30MB HD Drive



\$1285

FREE:Epson LX-800
6' printer cable
On-site service



A less-than-packed house greets participants in the first UNI Veterans' Night basketball game on Jan. 25. Similarly, only four veterans were in attendance.

(photo by Mike Solarte)

Event Schedule National Collegiate Drug Awareness Week February 6-10, 1989

Monday—Friday 10:00 a.m.-12:00 p.m.
Information table and videos in Village Square

Thursday, February 7
Adult Children of Alcoholics (ACOA) meeting, S-213

Thursday, February 9:40 a.m.-10:55 a.m.
Drug Use and Treatment: A Sample of Different Settings —
EAP, Social Service and Outreach (panel discussion), CC-217
(open, limited space)

12:30 p.m. AA Meeting
S-213 (closed meeting, open to members of A.A.)

2:00-3:15 p.m. The Youth Drug Scene: What's New on the Streets
(speaker/discussion) / Cls-2094 (open, limited space)

Friday, February 10 11:00 a.m.-11:50 a.m.
Current Trends in Street Use
(panel/discussion) / S-101 (Closed)

Also Planned:

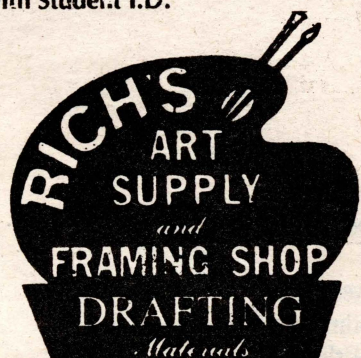
Tuesday or Thursday 12:30-2:00 p.m.
F-109: A presentation of UNI Student Videos (topic on substance abuse)
and on the other day we are negotiating for a speaker to discuss Substance
Abuse in the Media.

**FILL
THIS
SPACE
WITH
YOUR
AD!**

**Call Holly
at
794-2812**

**Don't be left
all alone.**

**10% discount
with Student I.D.**



**3838 NORTH CICERO AVENUE
CHICAGO, ILLINOIS
545-0271**

0234

**HOMEcoming '89
IS
COMING**

FEBRUARY 20-25

**MARK YOUR
CALENDAR!!!**

0222

Spring Break Specials

CANCUN — 7N — \$359.00
PADRE ISLAND — 7N — \$499.00
ARUBA — 7N — \$499.00
(above includes air, hotel, extras)
CRUISE — 7N — \$699.00
(m/s Caribe — inc. air)
ROME & FLORENCE — \$999.00
10 days incl. air, hotel)

Get a Group...You Go Free!!

Alphameric Travel, Inc.
"Flights of Fancy"
(312) 2-TRAVEL

BEST DEAL EVER OFFERED BY ANYONE

GUARANTEED LOWEST PRICES IN TOWN ON ALL CONTACT LENSES
(Including Disposable, Toric, And Color Contacts Or Designer Frames)

**FREE EYE EXAM
PLUS FASHION EYEGLASS FRAMES
OVER 100 FASHIONS TO SELECT FROM**

ONLY \$9.95 A PAIR



SUPERIOR EYE CARE

EYE EXAM PERFORMED BY A REGISTERED DOCTOR OF OPTOMETRY
SPECIALIZE IN CONTACT LENSES/VISION THERAPY

515 W. Ogden Downers Grove • Peterson-Lincoln Medical Bldg. in Chicago • 3141 Broadway in Chicago • 845 Chicago Ave. (Suite 10) Evanston

VALUABLE COUPON

**BAUSCH & LOMB
O SERIES
EXTENDED OR
DAILY WEAR
ONLY**

\$9.95

A PAIR*

30 Day Satisfaction Guarantee
Or Money Back

*New Patients Only. Eye Exam Not Included

**TURN YOUR
BROWN EYES
BLUE, GREEN,
AQUA, HAZEL,
SAPPHIRE**

Opaque Color Contacts

\$99

FREE TRIAL AVAILABLE

By Appt. Only Coupon
998-1173 Expires
4/1/89

**Vote for your
Student Senator
on
Feb. 21-22.**

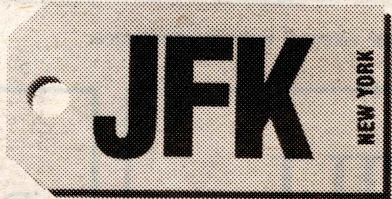
Watch For The Grand Opening Of Our New Office At 515 E. Golf Rd. In Arlington Heights

NORTHEASTERN ILLINOIS UNIVERSITY
INTRAMURAL SPECIAL EVENT SCHEDULE — WINTER 1989

DATES	ACTIVITY/TOURNAMENT	APPLICATION DEADLINE	*PARTICIPANTS' *MEETING	TIME	AREA
2/20-2/24	Men's Racquetball	Feb. 10	*Feb. 14	5:00 PM	Courts
2/20-2/24	Women's Racquetball	Feb. 10	*Feb. 14	5:00 PM	Courts
2/20-2/24	Men's Table Tennis	Feb. 10	**Feb. 14	12:45 PM	Lobby
2/20-2/24	Women's Table Tennis	Feb. 10	**Feb. 14	12:45 PM	Lobby
2/20-2/24	Men's 3 on 3 Bas.	Feb. 10	*Feb. 16	12:45 & 5:00	Gyms
2/20-2/24	Women's 3 on 3 Bas.	Feb. 10	*Feb. 16	12:45 & 5:00	Gyms
2/20-2/24	Co-Rec Volleyball	Feb. 10	**Feb. 16	7:00 PM	Gym 1
2/21 & 2/23	Men's Free Throw	Feb. 10	**Feb. 16	12:45 PM	Aux. Gym
2/21 & 2/23	Women's Free Throw	Feb. 10	**Feb. 16	12:45 PM	Aux. Gym
3/7 & 3/9	Bench Press Contest	Feb. 28	*Mar. 2	12:45 PM	Wt. Room

* All participants must meet in Room 2140 (P.E. Building) at 12:45 p.m. If you do not attend, you will be dropped from the tournament.
** All participants must meet in Room 2140 (P.E. Building) at 1:15 p.m. If you do not attend, you will be dropped from the tournament.
Applications and rules can be picked up at the Intramural/Recreation Office (P.E. Building 1110).
T-shirts will be given away as awards for tournament champions.

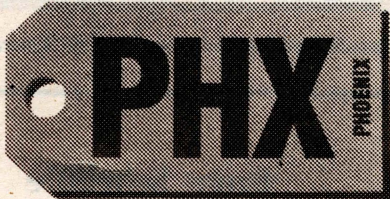
0229



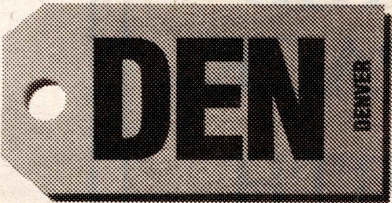
New York City
\$99 roundtrip



Seattle
\$99 roundtrip



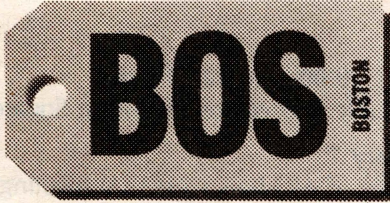
Phoenix
\$99 roundtrip



Denver
\$99 roundtrip



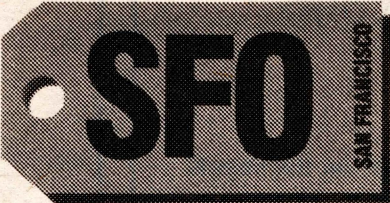
Chicago
\$99 roundtrip



Boston
\$99 roundtrip



Fort Lauderdale
\$99 roundtrip



San Francisco
\$99 roundtrip



Los Angeles
\$99 roundtrip

\$99 roundtrip airfares on Northwest Airlines. A special offer for students, only for American Express Cardmembers.

If you want to go places, it's time for the American Express® Card.

Because now you can take advantage of new travel privileges on Northwest Airlines *only for full-time students who carry the American Express Card.*

Travel privileges that offer:



Two \$99 roundtrip tickets—fly to any of the more than 180 cities served by Northwest in the contiguous 48 United States. Only one ticket may be used per six-month period.

Special Quarterly Northwest Destination Discounts throughout 1989—up to 25% off the lowest available fare. *5,000 bonus miles* in Northwest's WORLDPERKS® free travel program—where only 20,000 miles gets you a free roundtrip ticket to anywhere Northwest flies in the contiguous 48 United States or Canada.

And, of course, you'll enjoy all the exceptional benefits and personal service you would expect from American Express.

The only requirements for privileged travel: you must be a Cardmember, you must be a full-time student, and you must charge your Northwest Airlines tickets with the Card.*

Getting the Card is easier than ever because now you can apply by phone. Just call 1-800-942-AMEX. We'll take your application and begin to process it right away. What's more, with our Automatic Approval offers, you can qualify now while you're still in school.

Apply now. Fly later—
—for less.



Apply Now: 1-800-942-AMEX



*Some restrictions may apply. For complete offer details, call 1-800-942-AMEX. Current student Cardmembers automatically receive two \$99 vouchers in the mail.
© 1989 American Express Travel Related Services Company, Inc.

Sports

UNI cagers look for change

by Mike Solarte

The 1988-89 edition of the Northeastern Illinois University Men's Basketball team is having its share of difficulties, yet it is managing to "work hard and play well." The team is 6-11 through their first 17 games and assistant coach Dick Kanar has a good feeling about this team.

"We're playing much better of late. The players are starting to gel with one another," said Kanar. "All of the games we've played have been close. All of the conference games could easily have gone the other way."

The Eagles are 2-2 in conference play with wins over Illinois Institute of Technology (73-68) and Rosary (71-70). Both wins were on the road, which is an encouraging sign for Coach Kanar. "Every school in the conference has a loss which puts us right in the hunt to finish in or near the top four teams in conference," said Kanar.

The leaders for this team come from the starters. Angelo Mantis is one such forward who is providing a bulk of the scoring for the Eagles. Coach Kanar states, "Angelo is averaging near 20 points a game and his outside shooting is one of his biggest assets. He has done a good job as a leader."

Tony Davis, a junior college transfer student, is averaging 15 points per game along with an average of seven rebounds a game. Dan Patton is averaging 13 points while snaring seven rebounds per

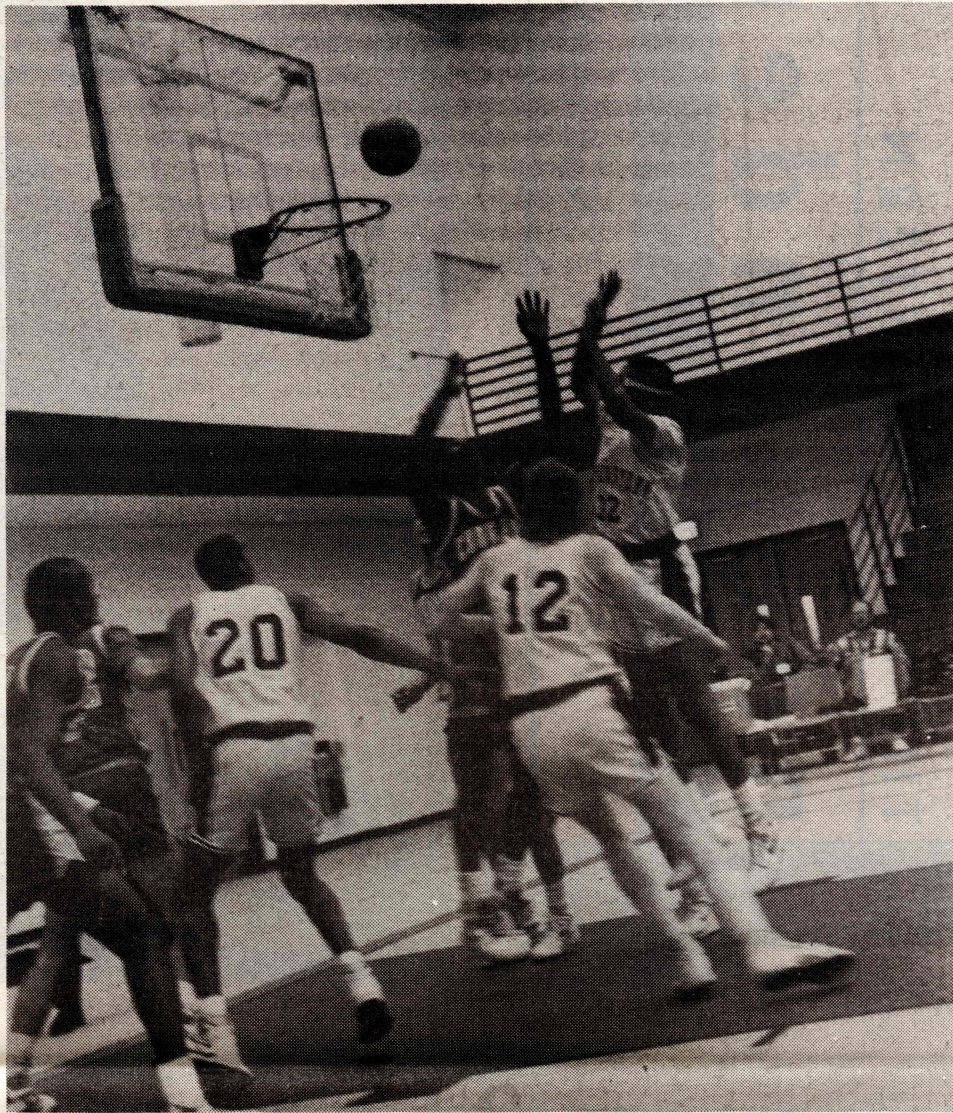
game.

Lou Atsaves is playing well of late after suffering a type of roller-coaster start. "Lou has had an up-and-down season," said Coach Kanar. "He is in the lineup now as a result of his talent and hard work. He sat out as a red-shirt last year while recovering from knee surgery, so he is really learning about the college game now."

As the season closes, a new era will be started. Beginning August 1, Northeastern basketball will be competing in the NCAA (National Collegiate Athletic Association) Division II. This season (1988-89) marks the last season for membership in the National Association of Intercollegiate Athletics (NAIA). What does this situation mean for the school?

"I think that will be exciting for the school," said Coach Kanar. "Our schedule will become more attractive as far as playing teams that people hear about in the news. We will be doing a sufficient amount of traveling and playing good teams. Next year, we are scheduled to play in Hawaii, California, and play some teams from all over the country. Hopefully that will make our program more attractive to the incoming players and perhaps do something for the UNI community."

Upcoming games for the Eagles include road contests against Olivet Nazarene, Roosevelt University, and College of St. Francis. Results will be reported in the Feb. 20 *independent*.



(photo by Mike Solarte)

Bill Dotson (32) goes over the head of a defender in the 72-65 win over St. Xavier on Jan. 25.



Women's basketball squad searches for elusive first team victory

by Mike Solarte

If the phrase 'good things come to those who wait' means anything at all, head coach Mike Fogel may want to start playing the lottery. After a start of 0-12, the Northeastern women's basketball team is still searching for its first win. Not only would the win put an end to the losing streak, it would also end a two-year winless drought that has plagued this squad.

"We have played well in the last five or six games," said Fogel. "The team knows that a win is not too far away. That will definitely be a reward for us."

The Eagles' record of 0-12 does sound discouraging, yet through the losing record, bright lights do shine for this team. Michelle Tucker, Margaret Steele, Anne McDermott, and Terri Dawson have provided strong efforts for Fogel in their most recent contests. Tucker had 14

points against the National College of Education in a losing effort, while Steele has put together efforts of 12, 15, 13, and 23-point games against N.C.E., Purdue-Calumet, Dana College, and College of St. Francis.

"St. Francis is one of the top teams in the conference and we were ahead by 10 points at one time," said Fogel. "Right now we are playing 200 percent better than at the beginning of the season. Now we are working on the finer points of the game."

Dawson has some impressive numbers in her file. After scoring 17 points against Dana, she then went on to rack up a whopping 30 points in a game against Mundelein. "She has had some very strong games in her last four outings, while Steele went 12 of 16 from the floor against St. Francis," said Fogel.

Anne McDermott is not known for her

offensive prowess, yet her sparkling play under the basket helps out the team. McDermott has had some big games for UNI, snaring rebound totals of 12, 11 and 7 so far this year. "Anne is our leading rebounder now and she is working very hard for us this year," said Fogel.

With this team in search of its first win, the coaching staff of Fogel and assistant coach Annette Tracy have gone to a new defense, which has appeared to help. "We have gone to a 2-2-1 press defense and it has all of us believing in ourselves; it is creating scoring chances, and it has made a big difference to our attitude," said Fogel. "Even though we haven't won, the enthusiasm is still up. That is a positive and I think a win is imminent."

THIS ISSUE'S SPORTSOPINION

Would the students of UNI like to see an ice hockey club re-started here at Northeastern?

Northeastern Illinois had a club hockey team that was founded in September of 1971. The club was listed in UNI yearbooks from 1971-1974. After 1974, the hockey club became extinct. Now that you know some of the background, please respond. Send your replies to the *independent* office located at E-409 c/o Mike Solarte SportsOpinion. The results will be printed in the next issue of the *independent*. Please submit replies in writing with your full name and year in school.

ZENITH

Data Systems



AUTHORIZED DEALER

Contact:
Computer Advantage
David Hume
777-9401

WHEN TOTAL PERFORMANCE
IS THE ONLY OPTION

As faculty, staff or student of
Northeastern, you can take
advantage of the **new, low
educational pricing** for
the PC compatibles.

Educational Account Representative
Terry D. Schevker
312 / 745-2142

THE NORTHEASTERN

Independent

Volume 2
Issue 9
February 6, 1989

Northeastern Illinois University



It's that time of year again, as UNI students turn out to the polls for Student Senate elections. Results of the Jan. 24-25 elections are on Page 1.

(photo by James Rogers)