

Fall 1985

## NEIU News- Sep. 1985

Patricia Szymczak

Follow this and additional works at: <https://neiudc.neiu.edu/neiunews>

---

### Recommended Citation

Szymczak, Patricia, "NEIU News- Sep. 1985" (1985). *NEIU News*. 27.  
<https://neiudc.neiu.edu/neiunews/27>

This Book is brought to you for free and open access by the Publications at NEIU Digital Commons. It has been accepted for inclusion in NEIU News by an authorized administrator of NEIU Digital Commons. For more information, please contact [neiudc@neiu.edu](mailto:neiudc@neiu.edu).

**NORTHEASTERN ILLINOIS UNIVERSITY**



**Fall '85**



**Northeastern Illinois  
University:**

**A PUBLIC ASSET**

NEWS is published three times a year by the Office of Alumni Affairs for the university, its graduates, neighbors, and friends. All news items should be addressed to NEWS, Office of Alumni Affairs, Northeastern Illinois University, 5500 North St. Louis Avenue, Chicago, Illinois 60625. Telephone: 312/583-4050, extension 271, 272, or 273.

Patricia Szymczak  
Director of Alumni Affairs  
Editor of NEWS

Bernadette Szymkowiak  
Administrative Aide

The Office of Alumni Affairs is located on the south end of campus at 5350 N. St. Louis Avenue.

Northeastern Illinois University subscribes to the principle of affirmative action and does not discriminate against any individual on the basis of age, color, handicap, national origin, race, religion, sex, or veteran status.

#### UNIVERSITY ADMINISTRATION

Dr. Ronald Williams  
*president*

Dr. John Cownie  
*provost*

Mr. Donn Bichsel  
*vice-president for development and public affairs*

Dr. Daniel Kielson  
*vice-president for student affairs*

Mr. Thomas Kuchinka  
*vice-president for administrative affairs*

#### BOARD OF DIRECTORS NORTHEASTERN ILLINOIS UNIVERSITY ALUMNI ASSOCIATION

President, David Laske  
B.A., 1968; M.Ed., 1970; M.A., 1972; M.A., 1974

Executive Vice-President, Raymiel Kandelman  
M.Ed., 1969; M.A., 1972; Ed.D., 1980, University of Sarasota

Associate Vice-President, Sondra Chesler  
B.A., 1982

Treasurer, John Adams  
B.A., 1978

Secretary, Peggy Ann Mendak  
B.A., 1969; M.Ed., 1974; Ph.D., 1979, Northwestern University

Delores Brooks, B.A., 1977; M.S., 1983  
Iris Delgado, B.A., 1984  
Irving Finston, M.A., 1979

Virginia Mae Frank, B.A., 1972;  
M.A., 1973, Western Michigan University;  
Ph.D., 1979, Union Graduate School

Lloyd Gillet, M.A.T., 1966  
Earl Goldman, B.A., 1967; M.A., 1973

Richard W. Haack, M.A., 1979  
Flora Llacuna, B.A., 1979; M.A., 1983

Judy Macior, B.A., 1978; J.D., 1981, John Marshall Law School  
James Pietz, M.A., 1971

Corinne Warsawsky, B.A., 1967; M.A., 1970;  
Ed.D., 1982, Loyola University

Photos courtesy of Learning Services  
and Print

## PAT SZYMCZAK APPOINTED DIRECTOR OF CAMPUS RELATIONS AT ILLINOIS



Patricia Szymczak, director of Alumni Affairs, has accepted the position of director of Campus Relations at the University of Illinois in Urbana-Champaign.

Pat's relationship with Northeastern began in the fall of 1968 when she entered the university as a freshman majoring in elementary education and psychology. Following graduation in 1972, she assumed her position in the alumni office.

During her 13 year tenure, she served as the liaison between the university and the Alumni Association. Pat created and coordinated several innovative programs including Mini-U, a non-credit continuing education program, the Alumni Job Network, and the new academic department constituency program. Pat was the editor of Northeastern Illinois University NEWS and was responsible for maintaining records on all Northeastern graduates.

In 1974 she was awarded a master of arts degree in educational administration from Northwestern University, and is currently working on a Ph.D. degree in higher education administration at the University of Illinois in Urbana-Champaign.

Pat has been active in the Council for the Advancement and Support of Education (CASE), a national organization for alumni, development, and public affairs professionals. Currently, she is secretary for the Great Lakes District of CASE.

Dear Fellow Alumni,

Good-byes are seldom easy and this one is no exception!

As I prepared to leave Northeastern, I was flooded with memories from both my days as a student and as an administrator. Northeastern certainly has seen many changes since 1968. The curriculum has been expanded, the physical campus has grown, and the number of students being served has increased.

Perhaps one of the most noticeable changes is the growing awareness and recognition of Northeastern as a major state university. This is due in no small measure to the achievements and accomplishments of Northeastern alumni. As our numbers grow and as we achieve our personal and professional goals, the reputation of Northeastern is enhanced. Similarly, as Northeastern strives towards excellence in its classrooms and labs, its standing in the academic community will reflect on the degrees held by each of us. This is the essence of our mutually beneficial relationship.

I have been extremely fortunate to have worked with an administration which is concerned about the relationship it maintains with its graduates and has demonstrated its concern with tangible support. I also had the privilege of working with a staff whose dedication and determination to serve alumni knows no bounds.

But, most importantly, I am grateful for the many opportunities I have had to get to know so many of you. Your support, insights, and concerns made my job both exciting and challenging. There never was a dull moment!

Please accept my heartfelt thanks and my best wishes for your future.

Warmest regards,

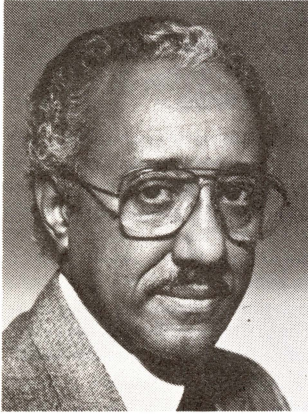
*Pat*

Patricia Szymczak

## PRESIDENT WILLIAMS

President Williams issued the following letter earlier this summer. We are including it in this issue of *NEWS* for the many alumni who have remembered the President with cards, good wishes and prayers.

June 11, 1985



*Dear Friends and Colleagues,*

*During my illness Arlene and I have received many expressions of hope, support, and prayers from you. Believe me we have and continue to draw upon that rich reservoir of good will and inspiration, for much lies ahead.*

*While I cannot respond individually to each of you, I wanted you to know how much your caring and support helped. At desperate times, sometimes a few lines have a way of reaching out with special meaning as those that follow did for me:*

*if I keep a green bough in my heart the singing bird will come  
(old Chinese saying)*

*We have kept a "green bough in our hearts" and we know the "singing bird will come."*

*Thanks for being there when it mattered.*

*Very truly yours,*



*Ronald Williams*

## REAPPOINTMENT OF THREE BOARD OF GOVERNORS TRUSTEES



*James L. Althoff*



*Wilma Sutton*



*D. Ray Wilson*

The Illinois Senate approved Governor James Thompson's reappointment of three executives to second terms as trustees for the Board of Governors of State Colleges and Universities. James L. Althoff, Wilma J. Sutton, and D. Ray Wilson were reappointed to six-year terms to the board.

Mr. Althoff is chairman of the board, president and chief executive officer of Althoff Industries and of Althoff and Associates. He served on the Board of Education, District 156, for twelve years from 1967-1979 and was board president from 1969-1979. Mr. Althoff has been appointed by the McHenry County Board to five consecutive three-year terms as president of the County Fire Protection District.

In addition, Mr. Althoff has served as a member of the board of directors of Northern Illinois Medical Center which is a 200 bed hospital. He is also on the board of directors of the McHenry Savings Bank.

Mr. Althoff of McHenry, Illinois, was first appointed to the board by Governor Thompson in 1979 and was reappointed in 1985. He has served on numerous board committees and in 1984 he was selected to serve as a member of the board's executive committee.

Mrs. Wilma Sutton is vice president of Savings of America, A Division of Home Savings of America, financial advisor, and a loan officer in the Conventional Loan Department at the Hyde Park office.

She earned a master's degree in public administration from Roosevelt University and holds numerous certificates from professional schools including a Management Certificate from the University of Illinois and a certificate from the School of Executive Development from the University of Connecticut. She was awarded a certificate of recognition by the National Alliance of Businessmen and is a member of Who's Who in America's Women.

Mrs. Sutton of the Hyde Park Area in Chicago was first appointed to the board by Governor Thompson in 1981. As a trustee, she served as a member of the board's Presidential Search Committee for Chicago State University in 1982.

Mr. D. Ray Wilson is the editor and publisher of the *Daily Courier-News* in Elgin and the *Daily Journal* in Wheaton. He is the author of five books entitled, *The Folks, Fort Kearney on the Platte, Episode on Hill 616, Nebraska Historical Tour Guide, and Wyoming Historical Tour Guide*. He holds degrees from Elgin Community College and Northern Illinois University.

He is active in numerous civic organizations including the Disabled American Veterans, American Legion, and the Illinois Veterans Advisory Council. He is founder and chairman of the board of the DuPage Heritage Gallery and the Red Grange Archives and also founded and chairs the V.I.P. Council of Illinois, serving Illinois senior citizens. He serves as chairman of the board of the Christian College of Southern Africa, Harare, Zimbabwe and serves as secretary and a member of the board of Judson College in Elgin and as member of the board of trustees of Sherman Hospital in Elgin.

Mr. Wilson, of Elgin, Illinois, was appointed by Governor Thompson to the board in 1981. He has been a member of numerous board committees and in 1984 was elected a member pro-term to the board's executive committee.

# Alumni Association NEWS

## 1984-85 ALUMNI ASSOCIATION ANNUAL REPORT

### A MESSAGE FROM THE ALUMNI ASSOCIATION PRESIDENT

The report which follows is a summary of activities sponsored by the Alumni Association this year. A review of 1984-85 indicates that with your help, through contributions to the Annual Fund as well as support through time and energy spent in association activities, we were able to continue to support higher education and maintain a mutually beneficial relationship with our alma mater.

This year we were fortunate to have many new members join in planning our activities through membership on the board and participation at the committee level. Also, a number of vacancies at the board of directors level compelled the executive committee to tap our experienced resources. Together we were able to assimilate our ideas and present a cohesive leadership for our constituency. We thank you for your help and acknowledge with appreciation those whose countless hours and energies helped us to grow.

### ALUMNI JOB NETWORK

The Alumni Job Network Committee co-sponsored six workshops with the Career Services Office.

- Job Search Techniques for the Experienced Job Seeker
- Career Changing Strategies for Educators
- Workshops for Job Seekers
- Interviewing Techniques
- Writing Your First Resume
- Advanced Writing for the Experienced Professional

### ANNUAL FUND, 1984-85

All alumni who support the Northeastern Illinois University Foundation's Annual Fund are considered active members in the Alumni Association. The fund drive consists of a mail solicitation and a Phon-a-Thon. Alumni who make a contribution may designate where they would like their donation spent on campus.

This year the Annual Fund took a different approach in soliciting gifts from alumni. Most academic department chairs wrote to their alumni asking for contributions for their department. Several departments also ran Phon-a-Thons where alumni were contacted by faculty members, students, and fellow alums and were asked to support their department. The bottom line is that the number and size of donations significantly increased and many departments received much needed revenue.

During 1984-85, a total of \$47,506 was donated by 2528 Northeastern alumni.

It should be noted that 133 volunteers donated one or more evenings to call and encourage fellow alumni to support the Annual Phon-a-Thon.

### SPRING THING

"Spring Thing" was held on Monday, June 17, at 7:00 p.m. The program featured a concert by the Alumni and Friends Band under the direction of Dr. Edgar Gangware. Also, the following Alumni Association awards were presented:

Alumni Service  
Howard Borenstein

Alumni Merit Awards  
George Crockett  
Thelma McDonald  
Steven Sroka

Special Awards  
Women's Basketball Team and Coach  
Dr. William Lienemann

Norman Noerper was selected Faculty Of The Year by the 1984-85 graduating class.

The following faculty members were given honorary lifetime membership in the Alumni Association in recognition of their years of service to the university as they retire.

Mr. Nicholas Boukidis	Mathematics
Mrs. Emily Ellison	Linguistics
Dr. John Etten	Elementary Education
Mrs. Marion Etten	Health Services
Mrs. Valerie Z. Gallagher	Career Services
Dr. Harold Harmon	Music
Dr. Benjamin Lease	English
Dr. William Lienemann	Administrative Affairs
Dr. Rosalyn O'Cherony	Foreign Languages
Mr. Studs Terkel	Honorary Degree Recipient

### PROGRAMS 1984-85

Throughout the year, the Alumni Association co-sponsors programs with various departments on campus. These diverse offerings are open to all alumni. During 1984-85, the Alumni Association co-sponsored the following programs:

The 12th Annual Chuck Kane Memorial Golf Outing was held on August 10 at the Glenview Naval Air Force Base Golf Course. It was co-sponsored with the Department of Physical Education.

The "Swing With The Big Bands Dance: A Salute To Count Basie" featured the Northeastern Illinois University Jazz Ensemble under the direction of Dr. Aaron Horne on November 2, 1984. This program was co-sponsored with the Department of Music.

The Third Biennial Book Sale was co-sponsored with the Library and the Northeastern Illinois University Foundation. It was held from November 7-9, 1984.

The traditional Alumni/Varsity Basketball Game was held on November 9, 1984. The event was co-sponsored with the Department of Physical Education. The alumni were victorious in the pre-season opener against the Men's Varsity Basketball Team.

In addition to those programs, hundreds of alumni participated in Mini-U, the Alumni/Friends Band, and the Com/University Chorus. Countless others have offered their services to academic and administrative departments as unpaid advisors.

As we end of 1984-85, we look forward to the increased involvement and participation of alumni in university and Alumni Association programs.

### ALUMNI ASSOCIATION FINANCIAL REPORT

<b>BALANCE AS OF JULY 1, 1984</b>		<b>\$1,417.86</b>
<b>INCOME</b>		
Donations	\$1,346.00	
Programs	464.50	
<b>Total</b>		<b>\$1,810.50</b>
<b>EXPENDITURES</b>		
Board of Directors	106.43	
Public Relations Committee	55.18	
Nominations/Elections Committee	224.95	
Special Events		
Awards	122.46	
Big Bands	383.36	
Alumni Job Network	0.00	
Office Supplies/Stationery	437.20	
Postage	609.54	
Copier	331.95	
<b>Total</b>		<b>\$2,271.07</b>
<b>BALANCE AS OF JUNE 30, 1985</b>		<b>\$ 957.29</b>

## ELECTION OF NEW BOARD AND OFFICERS



Sondra Chesler



Virginia Frank



Flora Llacuna



Corinne Warsawsky



John Adams



Irving Finston



Earl Goldman



David Laske



Delores J. Brooks



Iris Delgado

This past spring the annual alumni board election was held and a very large response was received from our active members. As a result, nine alumni were elected to the board of directors. The following four alumni will be serving three-years terms: Sondra Chesler (B.A./art, 1982), Virginia Mae Frank (B.A./psychology, 1972), Flora Llacuna (B.A./Spanish, 1979), and Corinne Warsawsky (B.A./early childhood education, 1967; M.A./special education, 1970).

One alumnus, John W. Adams (B.A./university without walls, 1978), was elected for a two-year term.

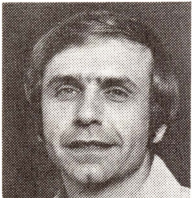
Irving L. Finston (M.A./political science, 1979), Earl Goldman (B.A./social science, 1967; M.A./political science, 1973), and David Laske

(B.A./psychology/history, 1968; M.Ed./mathematics, 1970; M.A./political science, 1972; M.A./geography, 1974) were elected for a one-year term.

Two alumni presidential appointees will be serving the board for one-year terms. They are Delores J. Brooks (B.A./university without walls, 1977) and Iris Delgado (B.A./special education, 1984).

At the annual meeting on June 17, the following officers were elected for 1985-86. They are: David Laske, president; Raymiel Kandelman, executive vice president; Sondra Chesler, associate vice president; John W. Adams, treasurer; and Peggy Ann Mendak, secretary.

## ANNUAL AWARDS PRESENTATION



Norman Noerper

### 1984 FACULTY OF THE YEAR

The April, August, and December 1984 graduating classes chose Mr. Norman Noerper, Department of Information Science, as the recipient of the Faculty of the Year Award. In order to be eligible for this award, a faculty member must demonstrate a commitment to Northeastern, his/her students, as well as his/her academic discipline.

### ALUMNI MERIT AWARD

This award is given to graduates who have distinguished themselves in their careers or their private life. Three merit award recipients were selected for 1985. They were George E. Crockett (M.A., 1981, history), Thelma K. McDonald (B.A., 1977, university without walls), and Steven D. Sroka (M.S., 1984, earth science).

George received this award for his exemplary performance as an educator at the John Marshall Metropolitan High School, his dedication to enhancing the future of countless students, as well as his outstanding contribution to the community.

Thelma was honored for her outstanding service as a volunteer to numerous organizations in the Chicago metropolitan area through her unselfish devotion to a variety of groups, especially those dedicated to serving disadvantaged individuals.

Steven received this award for his contributions to the field of paleontology through his research on the Mazon Creek collection and his efforts to establish a museum-library on Illinois fossils at Northeastern.

### 1985 ALUMNI SERVICE AWARD

This award is given to alumni who have demonstrated outstanding service to the university. Howard Borenstein (B.A., 1984, business and management) received this award for serving as the unpaid advisor to the stock trading team in the Department of Accounting, Business

Law, and Finance. Through his efforts, the national reputation of the team and Northeastern has been enhanced as well as giving students the opportunity to apply knowledge gained in the classroom to situations they will face in the business world.

### 1985 SPECIAL AWARD

This award is presented to a university faculty, staff, or student member or group for outstanding achievement or service above and beyond the work or school situation. The Women's Basketball Team and Coach John Margaritis were selected for this award for the recognition and honor they brought to Northeastern through their National Association of Intercollegiate Athletic District 20 Championship as well as their fine performance in the national championship tournament.

Dr. William Lienemann, former vice president, administrative affairs, was honored for his many years of dedicated service to Northeastern. During his tenure as vice-president, the university experienced tremendous growth in all aspects of campus life including the size of the student body, the number and diversity of academic programs, and the physical facilities.

### 1985 STUDENT ART PURCHASE AWARD

Cal Bonnavier was selected as the recipient of this award. Her stone lithographic entitled "If I Were A Carpenter" was purchased by the Alumni Association and donated to the university collection.

### HONORARY LIFETIME MEMBERSHIPS

The following individuals were awarded lifetime membership in the Alumni Association:

Mr. Studs Terkel, Northeastern's fifth honorary degree recipient  
 Mr. Nicholas Boukidis, professor emeritus, Department of Mathematics  
 Mrs. Emily Ellison, professor emeritus, Department of Linguistics  
 Dr. John Etten, professor emeritus, Department of Elementary Education  
 Ms. Marion Etten, director, Office of Health Service  
 Mrs. Valerie Z. Gallagher, director, Office of Career Services  
 Dr. Harold Harmon, professor emeritus, Department of Music  
 Dr. Benjamin Lease, professor emeritus, Department of English  
 Dr. William H. Lienemann, vice-president, Office of Administrative Affairs  
 Dr. Rosalyn O'Cherony, professor emeritus, Department of Foreign Languages/Literatures

# GRANTS, GRANTS, GRANTS

Northeastern has received a \$40,000 grant from the U.S. Department of Education's Business and International Education Program to develop a program in international business. Working with representatives from the Northwest International Trade Club, a non-profit corporation dedicated to furthering international trade, Northeastern faculty will design two new courses, "Business in the Pacific Basin Marketing Area" and "Exporting." In addition, teaching modules and business seminars will be developed, and a student internship program will be established. Project director is Dr. Edris Frederick (International/Intercultural Studies) who will be joined by faculty from the College of Business and Management and the Center for Program Development.

A continuation grant of \$116,228 for the fifth year of the Special Services Program was received from the U.S. Department of Education. The program serves 300 students—27 percent low-income, six percent first-generation college students, 52 percent both low-income and first-generation, and 15 percent physically disabled. They are provided with individualized counseling in personal, career, academic, financial, and self-exploratory areas as well as assistance in developing and enhancing their classroom performance. The project is directed by Ms. Alfreda Williams (Special Services).

A grant of \$75,000 has been received through the Illinois Board of Higher Education's Higher Education Cooperation Act (HECA) Program for the project, "Improving High School/College Transition for Inner-City Students." Northeastern, in cooperation with Columbia College, will establish an educational enrichment program for promising high school sophomores from two Chicago inner-city schools. Sixty students who aspire to college but whose academic records may be marginal will be provided with 120 hours of specially designed workshops and courses focusing on the development of effective study skills, critical thinking, and general academic skills in reading, writing, and mathematics. They also will be able to explore their career interests and develop career plans. Additionally eight high school teachers will be introduced to new teaching strategies. Dr. Nancy Green (Educational Foundations) will direct the project.

A joint project between Northeastern and the National College of Education will develop an in-depth school-based program designed to make effective use of the computer word processor to improve and enhance writing and reading skills. National College of Education, the grantee, has issued a \$23,394 sub-contract to Northeastern, through the Chicago Teachers' Center, to develop the program which will involve seven elementary schools in Chicago—Saucedo Magnet, Pope, Scanlon, Ellington, Boone, Ryerson, and Our Lady of Victory—and the microcomputer lab at National College, and Northeastern. Project director is Dr. Jerry B. Olson (Chicago Teachers' Center).

The Chicago Teachers' Center has received approval from the Chicago Board of Education to contract with individual schools to provide interdisciplinary professional development activities for teachers of students from low-income families. These activities include needs assessments, orientation sessions, topical workshops, classroom visits, school-wide events, and evaluation. Plans vary according to the needs of the specific schools. Contracts totaling \$70,840 have been approved for the coming school year at nine Chicago elementary schools: Carpenter, Chopin, Gale, Holmes, Jenner, Pulaski, Schneider, Suder, and Swift. Project director is Ms. Christine Wedam (Chicago Teachers' Center).

The Follow Through Program—Cultural Linguistic Approach to Early Childhood Education—was renewed for 1985-1986 with an initial award of \$13,349 to cover the first four months of the new grant period. Payment of the remainder of the award, \$23,939, awaits the settling of litigation between the Chicago Board of Education and the U.S. Department of Education. The project, in operation since 1969, is directed by Dr. Judith Starks (Center for Inner City Studies) and specializes in culture-based materials and methodology for black children, developing and expanding their language, and other cognitive skills.

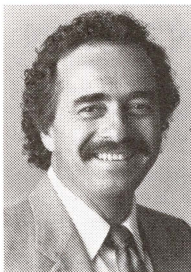
Several contracts between the Chicago Teachers Union and Northeastern were approved for counselor education and special

education courses to be offered to union members—specifically, school adjustment teachers seeking certification as counselors in the Chicago public school system. Two contracts totaling \$4,936 were approved in April, and six more totaling \$14,130 were approved in June. Project director is Dr. James Fruehling (Counselor Education).

Two consultation plans totaling \$1,355 for Saturday workshops at the Ericson and Howland Schools in Chicago were approved. The workshops, held in June, covered topics selected from those identified in a needs assessment done jointly by school personnel and Chicago Teachers' Center staff. Contracts totaling \$7,340 for other interdisciplinary professional development activities at Howe, Howland, Piccolo, and Ryerson Schools also were approved. Ms. Christine Wedam (Chicago Teachers' Center) directed both projects.

The Thorn River Foundation has renewed its grant to aid learning disabled students at Northeastern through development of new procedures and materials for tutoring programs. This continuation grant of \$1,000 extends the project through August 1986. Project director is Dr. Carol B. Gartner (Title III Program).

## NEW VICE-PRESIDENT FOR ADMINISTRATIVE AFFAIRS



*Thomas J. Kuchinka*

President Williams recently announced the appointment of Thomas J. Kuchinka as vice-president for administrative affairs.

Mr. Kuchinka is responsible for supervising the departments of budget, business services, computer services, institutional studies and planning, personnel, and physical facilities. He also prepares the university's operating and capital budgets for presentation to the Board of Governors of State Colleges and Universities, the Board of Higher Education, and the state legislature and is responsible for coordinating Northeastern's construction, renovation, and maintenance programs.

Mr. Kuchinka's appointment is the result of a nationwide search to fill the position, which has been vacant for two months due to the appointment of Dr. William H. Lienemann as the board's deputy executive director for administration and fiscal affairs.

President Williams said, "Thomas Kuchinka's many accomplishments in fiscal management and labor relations are impressive. We believe he is ideally suited for this key vice-presidential position at Northeastern, a position that oversees the university's annual \$30.5 million state budget as well as policies and programs that impact upon more than 1,000 Northeastern employees."

Prior to assuming the vice-presidency at Northeastern, Mr. Kuchinka served as dean of administrative services at Clark College in Vancouver, Washington. He was responsible for administering the college budget, personnel operations and labor negotiations, plant operations and maintenance, the college bookstore, capital projects, accounting and reporting, finance, security, and institutional support services.

He has also served as associate director for finance and administration at the College of William and Mary in Virginia and as internal auditor in charge of the office of audits and systems at Youngstown State University.

# Northeastern NOTES

## UNIVERSITY ADMISSION REQUIREMENTS REVISED

At its meeting on June 20, the Board of Governors of State Colleges and Universities (BOG) adopted high school course requirements for admission to its universities. Beginning in the Fall 1988, entering freshmen will be required to have completed specific high school courses in English, social studies, mathematics, and science.

Specifically, freshmen students entering Northeastern should have completed the following:

- Three years of college preparatory English
- Two years of college preparatory social science courses
- Two years of college preparatory mathematics
- Two years of college preparatory natural science courses
- Two years of college preparatory work in some combination of computer science, fine arts, foreign languages, and/or further work in the four areas above.

Dr. Thomas D. Layzell, executive director of the BOG, noted "By completing these course requirements, students will be better prepared to face the challenges of our academic programs. Furthermore, the board was particularly sensitive to the problems high schools may have in implementing necessary courses relating to university requirements. The requirements approved at the board meeting are reasonable, and this action is another positive step toward improving the quality of education. We are pleased the Board of High Education initiated this effort."

## NEW DEPARTMENT OF CURRICULUM AND INSTRUCTION

Recently, the Board of Higher Education approved the establishment of a new Department of Curriculum and Instruction within the College of Education. The new department consolidates and replaces the Departments of Early Childhood Education, Elementary Education, Secondary Education, and the Instructional Media Program.

Dr. Leonard Setze has been named acting chairperson for the new 26-faculty department. Dr. Setze will administratively lead the new department until a new chairperson is chosen and appointed sometime during the Fall 1985 trimester.

## JOB VACANCY LIST

### A RESOURCE FOR EMPLOYERS

Are you or your employer looking for talented and highly motivated employees? Why not look to Northeastern for help in your search? The office of Career Development and Placement can either 1) place your job opening in a bi-monthly "Vacancy List," which reaches hundreds of students and alumni who are actively seeking employment, or 2) open student/alumni resume files for review by your company representative to directly identify qualified candidates. Please call the office of Career Development and Placement at 583-4050, extension 351, to take advantage of either procedure.

### A RESOURCE FOR JOB SEEKERS

If you are in the market for a new job, there are two ways that Northeastern's office of Career Development and Placement might be able to help you: 1) it can send you copies of a bi-monthly job vacancy list, which contains job opportunities from employers who are actively looking for candidates, and/or 2) it is willing to include a copy of your resume in an "employer review" file. This file of resumes is reviewed many times each term by employers who visit campus to seek candidates. Please call the office of Career Development and Placement at 583-4050 extension 351, to learn how you can take advantage of these services.

## JOB SEARCH WORKSHOPS: SPECIAL SERIES

A series of evening workshops focusing on the aspects of a well-conceived and well-executed job search will be offered this fall by the office of Career Development and Placement as a convenience for Northeastern alumni.

The series, involving Northeastern staff and guest presenters, is as follows:

October 21 - Job Search: Sequence and Techniques

October 28 - Resume Writing: Basic Principles and Significance in the Job Search

November 4 - Preparing for the Interview: Climaxing the Job Search

All workshops will be held between 7:00 and 8:15 p.m., in the Career Development and Placement office, room B-117. For additional information, please call the Career Development and Placement office at 583-4050, extension 350.

---

## NATIONAL TEACHER EXAMINATION

The next National Teacher Examination will be held on Saturday, October 26, 1985. This examination is required by many school boards including the Chicago Board of Education. It will be offered in Chicago at the following universities:

Chicago State University

Loyola University - Lake Shore Campus

Northeastern Illinois University will *NOT* be offering this examination. However, the Department of Educational Foundations will continue to host the Teacher Education Refresher Workshop especially for students and in-service teachers though other interested persons are welcome to attend. The workshop will serve as an orientation session for student teachers and senior year college students planning to take the exam.

The workshop for students who plan to take the National Teacher Examination, scheduled for October 26, 1985, will be presented on Monday, October 7, 1985, in room CC-217 from 5:00 to 8:00 p.m. **NO FEE REQUIRED.** You do *NOT* need to register in advance for this workshop.

For additional information, please contact Dr. Richard Brewer, educational foundations department, at 583-4050, extension 8332, or the department office at extension 8327.

## LINGUISTICS DEPARTMENT HOSTS ALUMNI GET TOGETHER

The Department of Linguistics cordially invites its graduate alumni and students to a presentation by John Haskell on "Teacher Training and the Training of a Teacher in Japan: Some Personal Experiences."

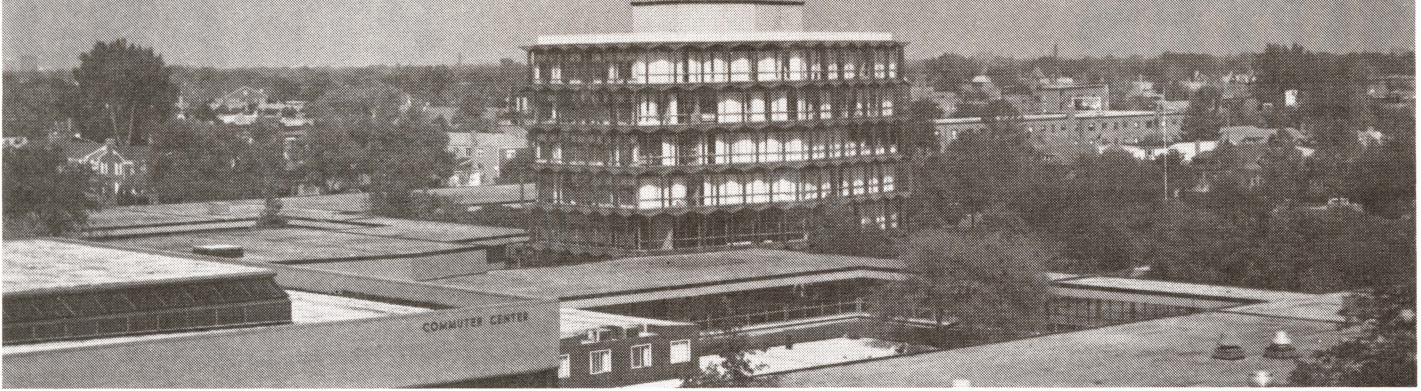
This presentation will be held on Friday, September 27, at 7:00 p.m. in the Golden Eagles Room on the first floor of the Commuter Center. A wine and cheese reception will follow.

If you plan to attend, please contact the linguistics department at 583-4050, extension 8100, by September 12.

---



# NORTHEASTERN ILLINOIS UNIVERSITY: A PUBLIC ASSET



In 1984, a study was conducted to explicate and evaluate the economic milieu of Northeastern Illinois University. It sought to identify and estimate the benefits and costs generated by the university's existence.

Since 1970, many economic impact studies have been undertaken by colleges and universities. The intent of many has been to overcome frictions often characterized by the "town and gown" relationship. Their means have been to point out and measure the mutuality of economic interests which exists between the university and the local community. Most previous studies have concentrated on economic expenditure analysis. Such an approach is particularly appropriate when a university represents a major economic sector of a small community.

However, for an urban university like Northeastern, such an approach based solely on an economic expenditure analysis, seriously underestimates the benefits which accrue to the community. An additional issue is the problem of efficiently spending tax revenues on many potential uses, one of which is public universities. These concerns are compounded by general price inflation and recession which results in state government revenues increasing at a slower rate than program costs. Therefore, in order to maintain existing levels of service, taxes must be increased or some services must be cut in order to maintain others. In making these decisions, the economic benefits of programs relative to their costs is an important consideration if government is to effectively serve its citizenry.

In the current economic environment there is a need to go beyond the original intent of most previous studies. It is imperative that universities, particularly public, urban universities, begin to estimate and point out the full economic benefits of their operations rather than merely concentrate on the short-run economic impact.

Unlike most economic impact studies compiled by residential colleges, Northeastern's study focuses on the long-run economic benefits of the existence to the university, the state's investments in its students, and the state's return on that investment. In addition, like most economic impact analyses, it highlights the short run expenditure impact of the university, its students, and its faculty and staff on the economies of both Metropolitan Chicago and Illinois.

The study focused on the long-run impact in addition to the short-term effect because the real economic impact of students attending a commuter university is felt after their graduation. Most graduates of Illinois' commuter universities continue to reside in the local community. Graduates of Illinois' public residential universities, however, usually leave the community in which the college is located. Compared to Northeastern, more graduates of residential colleges will relocate outside of Illinois, and they will take with them the investment Illinois taxpayers have made in their education.

There are two separable benefits which arise from the production of education. The "expenditure impact" arises from the annual operation of the university. Because revenues are received and expended, jobs are created and income is increased in the community. The "investment impact" arises because education creates "human capital" which raises the value of an individual's work and, thereby raises their income. The accrual of these benefits, but not their creation, will vary according to the general characteristics of a university.

Because of the existence of Northeastern Illinois University, the Illinois economy gains approximately \$477 million over the lifetimes of the members of each graduating class. This averages out to about \$12 million per year over their working lives. The increased income generated by one graduating class is sufficient to support about 450 additional jobs in Illinois each year.

In addition, the short-term expenditure impact of the university is that \$109.2 million is added to the Illinois economy each year because of purchases and investments made by Northeastern and its students, faculty, and staff.

Additional findings in the study on the investment impact of the university are:

- Of the 28,000 people who have received one or more degrees from Northeastern Illinois University, more than 88 percent continue to live in the Metropolitan Chicago area. More than 90 percent of Northeastern's graduates reside in Illinois.
- The state of Illinois will receive over the lifetime of each 1982 graduate (the graduating class analyzed in the study) more than \$31,000 in additional revenue from income and sales taxes alone above what it would have received if the student had not gone to college.

- The state of Illinois invested a total of \$21.5 million in the 1,395 graduates of the class of 1982 and will receive approximately \$32.2 million in additional income and sales taxes from those that remain in Illinois. Allowing for out-of-state migration, Illinois will receive an estimated net return of about \$10.7 million.
- Because a college education raises a graduate's future income above what it would otherwise be, the present value of a 1982 graduate's increase in lifetime income due is estimated to be \$280,600. Since it costs the average graduate about \$33,600 to invest in a four-year education at Northeastern, the net return to an individual graduate during his or her working life is about \$247,000.
- Graduates from the 1982 class can expect to be unemployed one time less over his or her working life because of the investment in a college degree. Using existing unemployment duration rates for Illinois, this results in an increase of income about \$9,800 for each graduate.
- For the members of the 1982 class as a whole, about 40 of its members will not be unemployed in any one year because of the investment in education. Over the working lives of the 1982 graduates, this results in an increase in aggregate income of over \$13.6 million.
- Because the investment in education reduces the amount of tax revenue that must be spent on unemployment compensation, the state of Illinois will save between \$97,000 and \$126,000 per year contingent on the dependent status of the graduates. Illinois can expect to save between \$3.9 million and \$5 million in unemployment expenses over the working lives of the 1982 graduating class.

Some findings in the study demonstrating the expenditure impact of the university are:

- Of the approximately \$22.3 million paid to Northeastern's faculty and staff as income in 1982, approximately \$536,000 was returned to the state in income taxes. Approximately \$3.2 million was paid in federal income taxes.
- In 1982, Northeastern's faculty and staff spent approximately \$6.3 million on housing, \$3.2 million on transportation, and \$5.1 million on the purchase of goods and services in the metropolitan Chicago area.
- Northeastern spent from operational funds approximately \$9.7 million in Illinois during 1982. This includes \$3.7 million on contracts with Chicago area business, \$4.1 million on the purchase of other services, \$755,000 on the purchase of goods, and \$1.1 million on research and public service.
- In 1982, investments in financial institutions by the Northeastern Illinois University community is estimated to be \$10.8 million; \$5.7 million from university operations, \$3.9 million from the university's faculty and staff, and \$1.2 million from Northeastern students.

It is hoped that the study will prove useful to the general public who must make personal decisions regarding the benefits and costs of a college education, to legislators who must make decisions regarding the allocation of funds, and to university administrators who must seek funds from the university's benefactors.

As this study shows, one of the most prudent, profitable investments Illinois taxpayers make is in the potential of the state's citizenry. It is an investment in those people committed to staying in Illinois; an investment that will more than double the return to the state for its original expenditure. It is an investment in the students at Northeastern Illinois University.

### Total Expenditures of University Community and the Multiplier Impact

Faculty and Staff	Estimated Dollars Spent
Direct Expenditures	\$ 14,658,526
Additional Expenditures in Financial Sector	<u>3,901,467</u>
Total Expenditures	18,559,993
<b>Students</b>	
Part-time-working Expenditures	16,381,561
Additional Expenditures in Financial Sector	1,166,778
Non-working Expenditures	<u>3,071,600</u>
Total Expenditures	20,619,939
<b>University</b>	
Direct Expenditures	9,679,305
Additional Expenditures in Financial Sector	<u>5,751,592</u>
Total Expenditures	\$ 15,430,897
<b>University Community</b>	
Total Direct Expenditures	\$ 43,790,992
Total Additional Expenditures in Financial Sector	<u>\$ 10,819,837</u>
*Total University Community Expenditures	\$ 54,610,829
Multiplier of	<u>x2</u>
Total Spending Resulting from the Existence of the University Community	\$109,221,658

\*When the university buys goods and services, these purchases become income for the businesses or individuals who buy goods and services from yet other businesses and individuals. This process is known as the "multiplier process." Thus, the original expenditure by the university community creates a larger addition of income in the local economy. In a major metropolitan area, a multiplier of '2' is considered to be conservative since most successive purchases remain in the local economy.

# All In The FAMILY

This column acknowledges the achievements of our graduates. If you have "news" that you would like to share with the Northeastern community, please write to:

**Office of Alumni Affairs**  
**Northeastern Illinois University**  
**5500 N. St. Louis Avenue**  
**Chicago, Illinois 60625**

## 1962

---

**Eleanor Swirsky** (B.Ed./general education; 1969, M.A./counselor education) has retired from her position as counselor at the Prussing Elementary School.

## 1964

---

**Mary M. Bostwick** (B.Ed./general education) recently retired after 21 years of teaching.

**Harold Kiehm** (M.A.T./biology) was the chairman of the Advisory Council of the International Science and Engineering Fair which was held in Shreveport, Louisiana.

## 1965

---

**Nancy Rafal** (B.Ed./general education; 1972, M.A./counselor education), a 1984 Grand Prize winner in the NEA/Kodak Program, "Cameras in the Curriculum," is a learning resource center teacher at the Peter Hoy and Green Valley schools in Lombard, Illinois.

## 1966

---

**Fern C. Brooker** (B.A./physical education) is the director of the day program at the International School of Gymnastics.

**Kenneth P. Gill** (B.A./history), a teacher-librarian at the Portage Park School, was elected president of the Polish American Educators Association.

**Marsha B. Nicholas** (B.A./psychology) is a career counselor for Bob Canyon and Associates.

## 1967

---

**Jacqueline Portney Dlatt** (B.A./general education), a full-time lecturer in the mathematics department at the University of Illinois at Chicago, is the co-author of *Fundamental Mathematics for Business* published by Macmillan and Company.

**Dixie Lee Walk** (B.A./general education) received a master's degree in administration from Northern Illinois University and is a sixth grade teacher at Scott School in Melrose Park, Illinois.

## 1968

---

**Mark Dlatt** (B.A./history; 1971, M.A.T./history) a United States History teacher at Springman Junior High School in Glenview, Illinois, is the owner of Group Educational Services, Inc., a group travel business, specializing in student tours.

## 1970

---

**Sylvia F. Feldman** (M.A.T./English literature) is a volunteer English teacher to foreign born adults in the MONNACEP ESL program in Skokie, Illinois.

**Claudia H. Gerard** (B.A./English) is the placement manager at Chicago Osteopathic Medical Center, Department of Human Resources.

**Steven F. Haber** (B.A./mathematics) is the president of Strategic Software Systems International in Nashua, New Hampshire.

**Frederick H. Pearson** (B.A./English literature; 1976, M.A./English literature), a teacher at Reavis High School for the last 14 years, is the director of Summer Programs.

**Mark Reitman** (B.A./psychology; 1975, M.A./counselor education), a member of the Wisconsin School Counselor Association, works with students at three schools in the Kenosha Unified School District in addition to maintaining a private counseling practice for children, adolescents, and adults.

## 1971

---

**Beryl Sharon Bellows** (B.A./music), a private voice and piano teacher, is the director of the Harmonettes, a woman's choral group, and a part-time soloist at Temple Judea Mizpah in Skokie, Illinois.

**Ludmilla Coven** (M.A./special education) was one of the organizers of New Trier High School's first college/career day for students with special needs. She also presented a paper entitled "Post-Secondary Planning For Students With Special Needs: Guidelines Not Guesswork" to the European Association For Special Education at Norrkoping, Sweden.

**Diana Wienke Lauber** (B.A./special education), assistant director of the Chicago Panel on Public School Finances, a non-profit coalition of community groups, recently completed an analysis on several reform proposals for the spring session of the General Assembly.

**Clyde Partner** (B.S./biology; 1985, M.A./special education) was selected to participate in a Summer Science Institute at the Fermi National Accelerator Laboratory.

**Tom Shields** (B.A./physical education) was appointed head coach of the men's basketball team at Mary Frances Clarke College in Dubuque, Iowa.

**Paul P. Sipiara, Jr.** (B.A./history; 1975, M.S./earth science), assistant professor of earth sciences at Harper Community College in Palatine, Illinois, is a research associate at the Field Museum. He also was a member of the 1983-84 Antarctic Search for Meteorites Program sponsored by the National Science Foundation.

**Dene Stamas** (B.A./psychology) is the director of the George Williams College Alcoholism Counselor Training Program.

## 1972

---

**Christopher G. Banakis** (B.A./speech) uses his background in speech and performing arts in sales and training programs at Motorola, Inc.

**Marcia Suzanne Doonan** (B.A./speech) is the compensation manager for Scottsdale Memorial Hospital in Scottsdale, Arizona.

**Tom Grana** (B.A./economics) is a contract administrator for Beatrice Foods.

**Joel Hall** (B.A./sociology), director of the Lake View-based Joel Hall Dancers, and his troupe performed for British audiences at the Glasgow (Scotland) Mayfest and the American Arts Festival in London. Upon returning home, he began a career in cinema by serving as the choreographer for Goldie Hawn's new movie.

**Ron Hanson** (B.A./social science) is a sales manager for a plumbing company.

**Lee Alan Mishkin** (B.A./geography and environmental studies; 1973, M.A.T./earth science), an earth science teacher at Juarez High School in Chicago, also directs and performs with the school rock group, the Little Eagle Band.



Michal Rooney

**Michal Rooney** (B.A./university without walls), founder and executive director of Job Resources for the Disabled (JRD), also founded the JRD Consortium, a bi-monthly forum for over 120 social service agencies in Chicago.

**James E. Schmitz** (B.A./physical education) is the general agent for the Northwestern Mutual Life Insurance Company in Cedar Rapids, Iowa.

## 1973

---

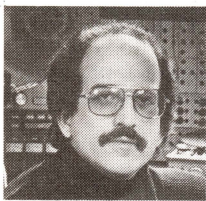
**Daniel E. Bacone** (B.A./economics) is the division credit manager for the Clare division of General Instrument Corporation in Chicago, Illinois.

**Francesca Calabrese** (B.A./English literature) is an overseas operator and lives in Palermo, Sicily.

**Vera G. Cousins** (B.A./board of governors) received a masters of business and administration in accounting from DePaul University and is now a certified public accountant.

**Charles Duesing** (M.A./special education) teaches mathematics and English in the special education department at Harold L. Richards High School.

**LaVerne T. Gurley** (B.A./university without walls) has written a textbook entitled *Introduction to Radiologic Technology* which is in its second printing and being used in several schools.



Howard Sandroff

**Howard Sandroff** (B.A./music), composer and concert synthesist, has been engaged by the Sante Fe Opera Company to render and perform the electronic music and sound design for the world premiere of Shakespeare's "The Tempest," an opera by John Eaton.

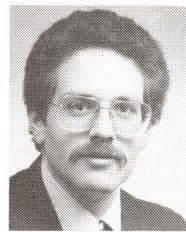
## 1974

---

**Darrell S. Breckenfeld** (B.A./music), a member of the "Gambler" rock band, has released two record albums.

**Terrence F. Daly** (B.A./history/political science) is a student in the School of Advanced International Studies at Johns Hopkins University and is completing a master's degree in international public safety.

**Phyllis Anne Miler** (M.A./special education) is working on a master's degree in library science at Rosary College in River Forest, Illinois.



Scott Mitzner

**Scott L. Mitzner** (M.A./inner city studies), an attorney for the Illinois Industrial Commission, is serving a two-year term on the State Library Board and is currently president of the North Riverside Library District.

**Raymond Peter Toczek** (B.A./economics) is employed by the Veterans Administration in Chicago, Illinois.

**Helen M. VanCura** (M.A./inner city studies), director of information systems for the corporate office of Equitable Relocation Management in Orlando, Florida, recently completed work for a master's degree in business administration from the Keller Graduate School of Business in Chicago, Illinois.

## 1975

---

**Lynne R. Gilbert** (B.A./social science) is a kindergarten teacher in Evanston, Illinois.

**Cheryl Hamada** (B.A./speech), a speech therapist for the Board of Education, played the role of the receptionist in the comedy, "E/R Emergency Room," at the Forum Theater in Summit, Illinois.

**Susan Michaelson** (B.A./mathematics) is a senior systems programmer for Sears, Roebuck and Company, Sears Tower, in Chicago, Illinois.

**Steven B. Novak** (B.A./English literature; 1983, M.A./music), a music and band teacher for School District 96 in Buffalo Grove, Illinois, is currently working towards a degree in educational administration.

## 1976

---

**Margaret Gajewski Del Valle** (B.A./sociology) is a physical education teacher for kindergarten through third grade at Park Forest School District 163 in Park Forest, Illinois.

**Bruce Russell Donash** (B.A./physical education) is the head football coach at Notre Dame High School for Boys in Niles, Illinois.

**Gerry Hand** (B.A./business and management) is product manager at Superior Graphite Company in Chicago, Illinois.

**William McHugh** (B.A./board of governors; 1979, M.A./political science) was appointed Bartlett Police Chief by the Bartlett, Illinois Village Administrator.

**Dolores Orlove** (B.A./university without walls; 1984, M.A./counselor education), is an Adult Re-entry Assistant at Oakton Community College. She is also an instructor of the Psychology of Personal Growth.

## 1977

---

**Rodi Adams** (B.S./biology), a falconer, has trained a red-tailed hawk, to hunt for rabbits and pheasants.

**Bernice C. Coleman** (B.A./board of governors) is a counselor at the Edgewater Uptown Community Mental Health Center.

**Anne Ericksen** (B.A./special education) was chosen as Outstanding Young Educator of 1985 by the Franklin Elementary School in Park Ridge, Illinois.

**Laurey Fisher** (B.A./university without walls) is the art director of Lettering, Inc., a graphic design and type company, in Chicago, Illinois.

**Mary A. Hockman** (B.A./English) is the chairperson of the foreign language department and instructor at the Academy, Chicago's first high school for the performing and visual arts.

**Katherine Konopasek** (B.A./English literature), senior assistant librarian at Saint Xavier College, had an article published entitled, "Undergraduate Periodical Usage: A Model of Measurement" in *The Serials Librarian*, an international journal.

**Thelma K. McDonald** (B.A./university without walls) was the recipient of awards from Mayor Washington for voters' registration participation; the King's Super Seniors, a human social services organization; and the Retired Senior Volunteer Program (RSVP).

**Beatrice Michaels Shapiro** (B.A./board of governors; 1982, M.A./reading) has had two articles published: "My Mother's Yiddish" which appeared in *Pioneer Woman Magazine* and "First Person" in the *Chicago Tribune's* "Sunday Magazine".

## 1978

---

**Susan D. Bernstein** (B.A./human services), director of resource development at Travellers and Immigrants Aid, spearheaded the campaign to create the first national women's retreat and conference center by founding and serving as first president of the National Forum For Women in Woodstock, Illinois.

**Thomas A. Corfman** (B.A./English), a graduate from the DePaul University College of Law, is an associate with Genson and Steinback, a firm which specializes in criminal defense with emphasis on tax fraud and business crime cases.

**Michael Harada** (M.S./biology), a former Navy dentist with the Fleet Marine Force in Camp Pendleton, California, is in general practice residency at the Evanston Hospital in Evanston, Illinois.

**Thomas F. Riley** (M.A./special education) is the chairman of the Department of Special Education at Kelvyn Park High School.

**Belle K. Willens** (M.A./special education) has been appointed chairperson of Women in the Arts Committee of the Beta Psi Chapter of Delta Kappa Gamma.

## 1979

---

**Irving L. Finston** (M.A./inner city studies) presented "The Effect of the Convergence of Financial Factors on Insurance Company Reserving and Self-Insurance Procedures" to the Western Risk and Insurance Association in Reno, Nevada.

**Craig A. Horwitz** (B.A./business/management) is the division manager for the consumer product division of Wico Corporation which is a distributor of personal computer peripherals and accessories.

**Arpine S. Kachikian** (B.A./music/French), currently working on her master's degree in music education, was asked to sing the "Star-Spangled Banner" at the 70th anniversary of the Armenian genocide which was held at the Civic Center in downtown Chicago. She was also chosen as guest conductor to lead the choirs of the Armenian churches that participated in the ecumenical service at this program.

**Betty F. McDaniel** (B.A./university without walls), is a member of several professional organizations which focus on health, fitness, dance, and sports. She is the chairman and chief executive officer of HEALTH-ER-CIZE, INC. specializing in exercise programs and training workshops in Chicago, Illinois.

**Susie Moy** (B.A./Spanish/elementary education) received a paralegal certificate from Roosevelt University in Chicago, Illinois.

**Beth Schweda Murphy** (B.A./speech/sociology) received a master in business administration from Loyola University and is working as a Product Manager for E. J. Brach and Sons.

**Jeff Prosansky** (M.A./counselor education) is counselor at the Falconer Elementary School in Chicago, Illinois.

## 1980

---

**Rose N. Kusnetz** (B.A./human services) is a social worker at The Ark in Chicago, Illinois.

**Pam Terpina** (B.A./business and management) has been appointed auditor/officer in the auditing department of Colonial Bank in Chicago, Illinois.

## 1981

---

**Adrienne R. Andrews** (M.A./inner city studies) is working on a doctor of philosophy degree in anthropology at Northwestern University in Evanston, Illinois.

**Beverly Fink** (B.A./language arts) is a teacher of gifted children from first through sixth grades in Des Plaines, Illinois. She also has had learning aids published by Resources for the Gifted and the Illinois Council for the Gifted.

**Timothy P. Frawley** (B.A./English literature/speech), a teacher and director of theatre at Libertyville High School, is currently working on a master's degree in theater at Northwestern University.

**Danial Gandor** (M.S./biology), a research technologist in the Department of Oral Pathology at the University of Illinois at Chicago, is currently working on a doctor of philosophy degree in biology. He has had articles published in the *Archives of Oral Biology* and *Stain Technology*.

After 30 years of service for the United States Postal Service, **Richard Hellestrae** (B.A./board of governors) has been appointed postmaster of Highland Park, Illinois.

**Linda A. Jacobson** (M.A./special education) developed the gifted math program in the Buffalo Grove-Long Grove Elementary District 96 and is now tutoring children in her home.

**Miriam B. Lifshutz** (M.A./counselor education), is a staff member of the Department of Adult Continuing Education at Truman College and is a counselor in private practice.

## 1982

---

**Robert H. Ada** (B.A./business and management), is a national control analyst for the Options Clearing Corporation.

**Julia R. Antos**, (B.A./business and management) is assistant cashier and bank officer for the Northern Trust Bank-O'Hare in Chicago, Illinois.

**Pat Marotta** (B.A./political science) is a field representative for The Dartmouth Plan, Inc. in Chicago, Illinois.

**Judith A. McLaughlin** (M.A./speech) made her professional debut as an actress in Noel Coward's "Blithe Spirit" at the Illinois Theater Center in Park Forest, Illinois.

## 1983

**Dolores Braun** (B.A./human services), a social worker at the Mt. Prospect Senior Center, is also working on a master of science degree in gerontology.

**Second Lt. Frank R. Gruendner** (B.A./economics) has been awarded silver wings following graduation from U.S. Air Force navigator training at Mather Air Force Base in California and is now serving at Dyess Air Force Base in Texas.

**Robin Ann Jankowski** (B.A./business and management) completed her master of business administration in finance, with high honors at DePaul University in Chicago, Illinois.

**Lynn A. La Russo** (M.E.D./language arts) is a technical editor/writer at American Telephone and Telegraph (AT&T) Technologies, Computer Systems Center, in Lisle, Illinois. She is also the editor of two newsletters: *AT&T Hardware Support News* and *Unix System Support and Update News*.

**Mark P. McCarthy** (B.S./marketing) is a telemarketing sales representative, property and casualty insurance, for Montgomery Ward in Elmhurst, Illinois.

**Daniel V. Radice** (B.A./board of governors), a certified public accountant, is working on a doctoral degree at the University of Chicago.

Marine Second Lieutenant **Mark D. Sanders** (B.A./board of governors) completed a seven-week Motor Transport Officers Leadership course and has been assigned to the Second Force Service Support Group at Camp Lejeune, North Carolina.

**Lynn Soderlund** (B.A./board of governors) is the administrator for space programming and development at Lutheran General Hospital in Park Ridge, Illinois.

## 1984

**Debbie L. Gordils** (B.A./criminal justice) is a speech teacher at Loyola Academy in Wilmette, Illinois.

**Karen A. Pajor** (B.S./accounting) is working in the accounting department at Cibcoa in Northbrook, Illinois.

**Anthony Riccio** (B.A./criminal justice) was one of four candidates, out of a pool of 900, who passed the Mount Prospect, Illinois, police officer testing and is now an officer for the village.

## BOOK SALE

Northeastern's Library, the Alumni Association, and the Northeastern Illinois University Foundation will be sponsoring their fourth book sale on the following dates:

Thursday, November 7	7:45 a.m. - Midnight
Friday, November 8	7:45 a.m. - 6:00 p.m.
*Saturday, November 9	9:00 a.m. - 5:00 p.m.

Prices are: Paperback books	25¢
Hardcover books	50¢
Selected titles	\$1.00 and up

\*A Clearance Sale will be held on Saturday - all books will be 10¢.

Books will be sold on the first floor of the Library, near the entrance.

For additional information, please call the alumni office at 583-4050, extension 271.

## THE 1982 YEARBOOK HAS ARRIVED!

If you are a 1982 graduate and would like a free copy of the 1982 Yearbook, please send a check or money order for \$3.00 (to cover shipping costs), along with your name and address to:

**1982 Yearbook**  
**Northeastern Illinois University**  
**5500 N. St. Louis Avenue**  
**Chicago, Illinois 60625**

## YOURS FOR THE ASKING

A limited supply of the following yearbooks are available:

1975	1978/79	1979/80
------	---------	---------

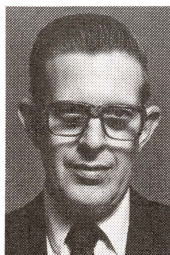
If you would like to receive a free copy, please write or call the alumni office at 583-4050, extension 271.

## IN MEMORIAM

### Alumni

**Robert Halperin**  
1977, B.A./English

**Anna Bell Thomas Robinson**  
1968, M.A./Special Education



*Richard Emrich*

### Richard Emrich 1928-1985

On August 17, Northeastern and the Alumni Association lost a cherished friend when Richard Emrich, former association president, passed away. Richard received a bachelor's degree in social studies in 1975 and a master's degree in political science in 1977 from Northeastern.

Richard was elected to the board for a three-year term in 1978 and was re-elected for a second term in 1981.

In addition to serving as the president of the Alumni Association in 1983, Richard held numerous leadership positions during his tenure on the board including association vice-president, treasurer, chair of the Nominations/Elections Committee, chair of the Constitution Revision Committee, and chair of the Finance Committee. This past spring, Richard was re-elected to the board for a third, three-year term.

Those who had the opportunity to work with Richard will miss his insights and advice. However, there is some consolation in knowing that his total dedication to his fellow alumni and Northeastern will live on in the many programs and services that were inaugurated under his leadership.

## MUSIC AND DANCE PROGRAMS

**September 21**  
Indian Classical Music Society  
Sitar Recital  
Shahid Perpez, guest artist  
7:30 p.m./Auditorium  
Admission Charged

**October 3**  
Faculty Recital  
Aaron Horne, clarinet  
William Schutt, piano  
12:45 p.m./Recital Hall

**October 18**  
Mid-America Guitar Society  
Classical Lute Recital  
Toyohiko Satoh, guest artist  
8:00 p.m./Auditorium  
Admission Charged

**October 24**  
Jazz Combo Concert  
7:30 p.m./Auditorium

**October 31**  
Mostly Music Mid-Day Program  
12:45 p.m./Recital Hall

**November 1 and 2**  
Joel Hall Dance Company  
in Concert

Co-sponsored with UNI Dance  
Company  
8:00 p.m./Auditorium  
Admission Charged

**November 6**  
Band Concert  
Edgar Gangware, director  
8:00 p.m./Auditorium

**November 8**  
Mid-America Guitar Society  
Classical Guitar Recital  
David Tanenbaum, guest artist  
8:00 p.m./Auditorium

**November 14**  
Mostly Music Mid-Day Program  
12:45 p.m./Recital Hall

**November 21**  
Opera Workshop Performance  
Ronald Combs, director  
7:30 p.m./Auditorium

**November 25**  
UNI Jazz Ensemble Concert  
Aaron Horne, director  
7:30 p.m./Auditorium

**November 26\* and 27\*\***  
UNI Dance Company Concert  
Nana Shineflug, director  
\*12:30 p.m./Auditorium  
\*\*Noon/Auditorium

**December 2**  
Alumni Band Concert  
Edgar Gangware, director  
8:00 p.m./Auditorium

**December 3**  
Wind Ensemble Concert  
Edgar Gangware, director  
8:00 p.m./Auditorium

**December 5**  
Mostly Music Mid-Day Program  
12:45 p.m./Recital Hall

**December 5**  
UNI Choral Ensembles and  
Chamber Orchestra Concert  
James Lucas and Sylvie Koval,  
directors  
8:00 p.m./Auditorium  
Admission Charged

## BULLETIN BOARD

The Office of Alumni Affairs is frequently asked by off-campus organizations and businesses for lists of alumni. Since it is against university policy to provide addresses of graduates to outside agencies, the requests are denied. However, sometimes we feel the information these organizations wish to send would be of interest to alumni. In order to serve Northeastern graduates, while at the same time protecting their records, we have initiated this column.

### CALLING ALL WASHINGTON, D.C. ALUMS

The Illinois State Society is a social organization in Washington, D.C. Founded in 1854, the society serves as a focal point for Illinois natives residing in the nation's capitol for all activities involving Illinois groups.

If you reside in the Washington area and are interested in learning more about this group, please contact: Mary Fran Coffey, president, The Illinois State Society, 1184 North Pitt Street, Alexandria, Virginia 22314, Phone: (703) 683-5441.

### WOMEN IN SCIENCE/RE-ENTRY INTO ANALYTICAL CHEMISTRY

The Illinois Institute of Technology (IIT) is sponsoring a program, Women In Science/Re-Entry into Analytical Chemistry (WIS-REACH), as part of a national effort to assist underemployed or unemployed women with baccalaureate degrees in science re-enter the job force at the professional level.

The program contains three components: (1) Academic - enrollment as part-time students in regular IIT courses, (2) Experimental - paid part-time internships at cooperating companies or other organizations, and (3) Supportive - seminars or individual counseling on career re-entry issues. Participants normally spend from two to six semesters in the program and are eligible for a certificate on completion of an approved program study.

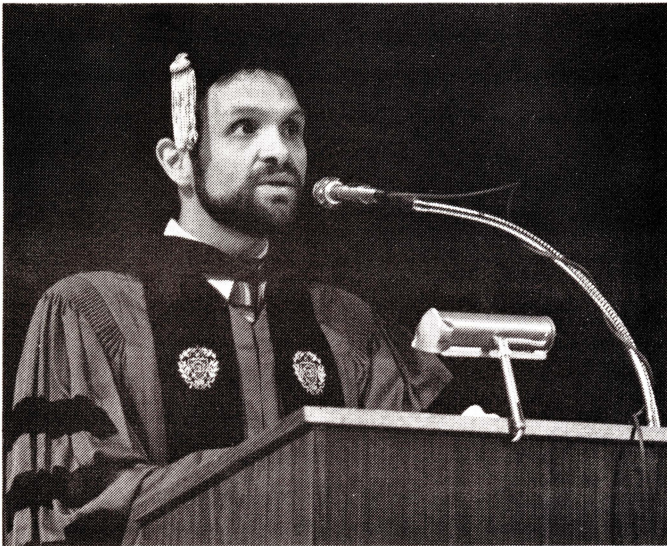
Additional information may be obtained by contacting Dr. Kenneth Schug, program director, Department of Chemistry, Illinois Institute of Technology, Chicago, Illinois, 60616, Phone: (312) 567-3438.

### AN OPPORTUNITY FOR INNOVATORS

The National Bureau of Standards and the Department of Energy are sponsoring a program to help promote scientific and technical innovations and inventions, particularly those submitted by individual inventors and small companies for the purpose of obtaining grants from the Department of Energy.

You are invited to participate in this program which provides a free and confidential evaluation service with the potential of government support. For further information, please contact: Office of Energy-Related Inventions, National Bureau of Standards, Gaithersburgh, Maryland, 20899, Attention: T. A. Coultas.

## HONORS CONVOCATION



*Dr. Kenneth James, Department of Special Education, presents the keynote address at the Honors Convocation.*

Approximately 200 Northeastern undergraduates participated in an Honors Convocation which was held on May 9 in the university auditorium. Following the program, a reception for the students and their guests was held in Alumni Hall.

The convocation recognized those students who have maintained a high level of scholastic achievement and shown outstanding effort in leadership or service. Undergraduates who took part in the Honors Convocation received awards or scholarships for accomplishments at Northeastern during the 1984-85 academic year.

Faculty participating in the ceremony were Dr. John Cownie, provost; Dr. Edward Robinson, professor of secondary education; and Dr. Ken James, associate professor of special education and keynote speaker.

## VARIETY SHOW BENEFIT FOR AFRICAN FAMINE VICTIMS

The faculty and staff of Northeastern presented a 14-act Faculty and Staff Variety Show which benefited the Africa famine victims on Monday, April 1, at 7:30 p.m. in the university's auditorium.

"The Ethiopian problem is something we are all aware of, especially through its coverage in the news media. But as professors, it is our job to make our students aware of what is going on in the world, and we should set an example through our actions," commented Dr. Battista Galassi, professor of foreign languages and literatures and chairperson of the fundraiser. Prizes donated by local businesses were awarded to students who raised the most money.

Entertainment included singers, a singer-humorist, Flamenco dancers, the rock group, "American Dream," a dog act featuring a German Shepherd and a Dachshund called "Unipets," and a comedy troupe called "The Mountain Williams." A group of 40 children violinists from the Haag-Levitan Suzuki Academy of Performing Arts were special guest performers.

When the project was first proposed, a goal of \$10,000 was set. The amount raised, \$10,124.94 was sent to UNICEF to buy food, clothing, and medicine for famine victims in Africa.

## ALUMNI VARSITY BASKETBALL GAME

The 1985-86 Golden Eagles Varsity Basketball Team continues its tradition of opening the season by playing the alumni team. Cheer the teams on to victory by joining hundreds of alumni, students, and fans on **Saturday, November 9**, at 7:30 p.m. in the gym.

## WE'RE LOOKING FOR OUR SUCCESS STORIES

Each year, the Northeastern Illinois University Alumni Association recognizes outstanding achievements and services to the university by our graduates, students, faculty, and staff through its Alumni Recognition Program. Since individuals are actively involved in many diverse pursuits, there are several distinct award categories, each designed to acknowledge significant contributions in different spheres.

The **Alumnus of the Year Award** is presented to an alumnus who has distinguished him/herself in his/her career and has provided service to the university. **Alumni Merit Awards** are granted to graduates who have distinguished themselves in their careers or personal lives. **Alumni Service Awards** are given to alumni who have demonstrated outstanding service to the university. Each year, the association also salutes outstanding achievements of members of the university community by presenting **Special Faculty, Staff, Student Awards**.

If you are an alumnus, student, faculty, or staff member, your input into our awards process is essential. As a result, we welcome and encourage nominations of individuals who may objectively and unanimously deserve recognition for their meritorious contributions. Please send your recommendations to the Alumni Association, c/o Northeastern Illinois University. Deadline for submitting nominations is **October 15**.

### ALUMNI ASSOCIATION AWARDS

I would like to nominate

\_\_\_\_\_

for a \_\_\_\_\_ award.

Nominated by:

\_\_\_\_\_

Address \_\_\_\_\_

City \_\_\_\_\_ State \_\_\_\_\_ Zip \_\_\_\_\_

Phone (Day) \_\_\_\_\_ (Evening) \_\_\_\_\_

Please send this form by **October 15, 1985** to:  
Northeastern Illinois University  
Alumni Association  
5500 N. St. Louis Avenue  
Chicago, Illinois 60625



*The Capital Development Board,  
the  
Board of Governors of State Colleges  
and Universities,  
and  
Northeastern Illinois University  
cordially invite you  
to the  
formal groundbreaking  
of the  
Physical Education Complex  
at  
Northeastern Illinois University  
5500 North St. Louis Avenue Chicago*

*This outdoor event is scheduled for 10:00 a.m., Tuesday,  
October 8, 1985. The ceremony will take place at the site  
adjacent to the alumni office - 5350 N. St. Louis Avenue.  
In case of inclement weather, the ceremony will be held in  
Alumni Hall, Commuter Center.*

*You are also invited to attend a Fitness Fair in  
the Commuter Center following the ceremony.*

NORTHEASTERN ILLINOIS UNIVERSITY



5500 N. ST. LOUIS AVENUE  
CHICAGO, ILLINOIS 60625-4699

**ADDRESS CORRECTION REQUESTED**

U.S. POSTAGE  
**PAID**

Chicago, Illinois  
Permit No. 2929  
Non-Profit  
Organization