

1936

The Emblem 1936

Evelyn F. Glazer

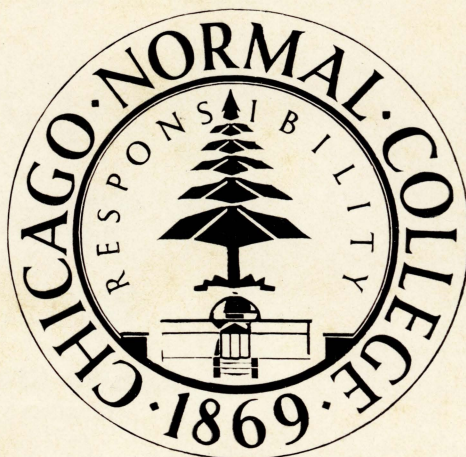
Follow this and additional works at: <https://neiudc.neiu.edu/emblem>

Recommended Citation

Glazer, Evelyn F., "The Emblem 1936" (1936). *Emblem (1912 - 1959)*. 39.
<https://neiudc.neiu.edu/emblem/39>

This Yearbook is brought to you for free and open access by the Yearbooks at NEIU Digital Commons. It has been accepted for inclusion in Emblem (1912 - 1959) by an authorized administrator of NEIU Digital Commons. For more information, please contact neiudc@neiu.edu.

THE
EMBLEM
1936



Editor-in-Chief
EVELYN F. GLAZER

Associate Editor
ALICE MCCARTHY

Business Manager
EUGENIA SHEA

Artist
MARGARET TAYLOR

Chairman of Advisers
JAMES I. SWEARINGEN



THE EMBLEM OF 1936

PRESENTED BY
THE SENIOR CLASS



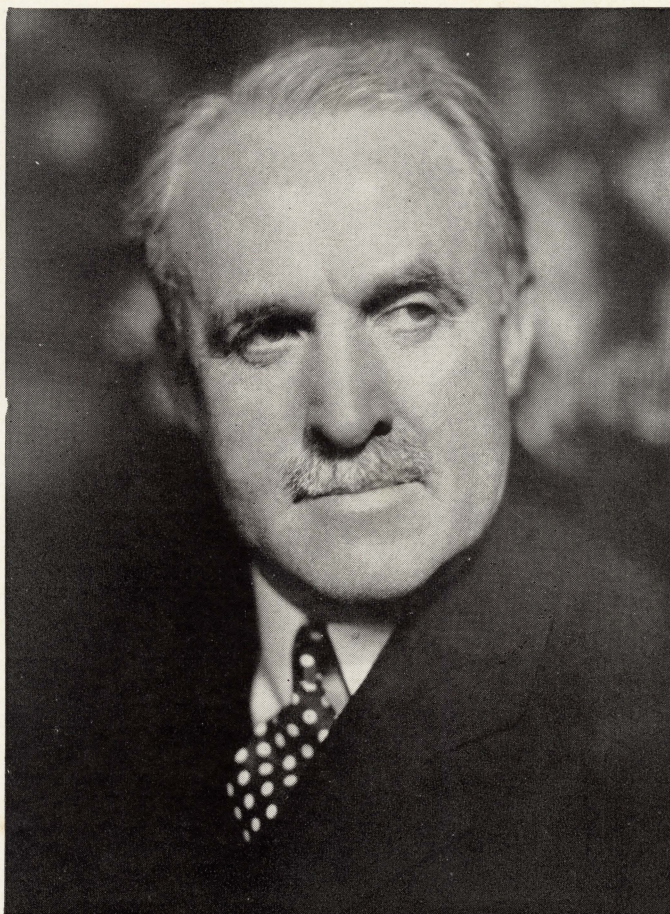
CHICAGO NORMAL
COLLEGE
CHICAGO, ILLINOIS

FOREWORD

Three years at Normal—and now they're over. Three years—we've worked together; we've had good times together; we've received ideas and knowledge and methods — together; we've faced our problems—together; we've been inspired with high ideals — together; and now we are told that we are prepared to put our ideas and ideals into practice with children in schools.

For the first time in three years, we are about to face the world and its problems, not together—but alone, each one of us apart from the rest. How easy it would be for us to drift away—to forget the time we spent together—to become so engrossed in our varied paths of life that we would be separate and apart in every sense.

It is to prevent just such a calamity that we are publishing the Emblem, the last project we have undertaken to do—together. Perhaps at some future time it will form a connecting bond for all of us; a link to the past to bring us back—at least in spirit—to the friends and experiences of the last three years. If it can do that, the Emblem will have accomplished its purpose. It will have brought us together again.



In Memoriam

WILLIAM J. BOGAN

OCTOBER 26, 1870

MARCH 24, 1936

An outstanding educator and true friend of public education—such was the late Superintendent of the Chicago Public Schools. Mr. Bogan's achievements during nearly a half century of service meant progress in all branches of our school system. He was loved and honored by those with whom he came in contact; children, teachers, administrators all enjoyed working with him.

It is in the spirit of deepest love and reverence that we, the Class of 1936 of the Chicago Normal College, dedicate our Emblem to the memory of William J. Bogan, with the hope that as future teachers we can uphold the ideals of education he so firmly advocated.



CONTENTS

ADMINISTRATION

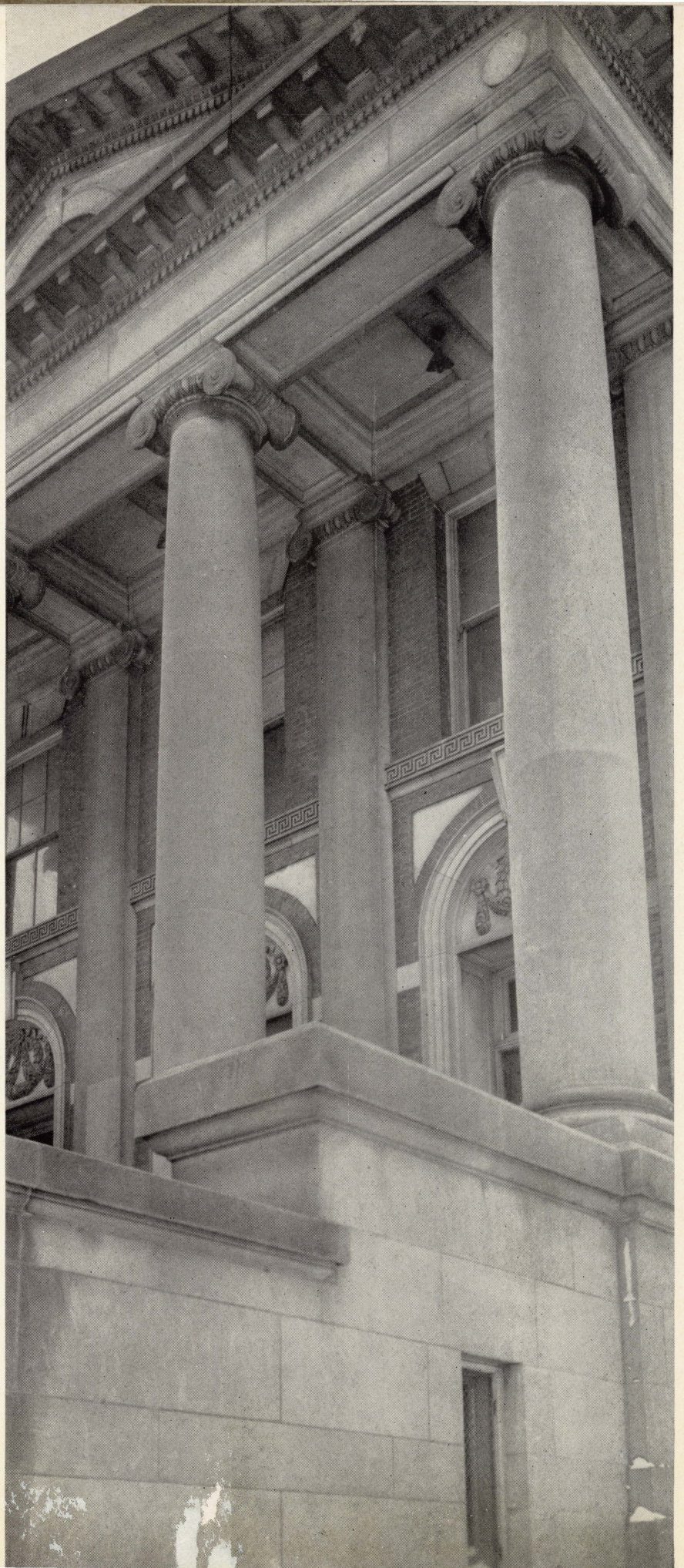
GRADUATES

UNDERCLASSMEN

ACTIVITIES

ATHLETICS

FEATURES



In Memoriam



GEORGE H. GASTON

NOVEMBER 20, 1934

LOUISE M. GILDEMEISTER

JANUARY 14, 1935

GENEVIEVE LARSON

AUGUST 31, 1934

DEMONSTRATION



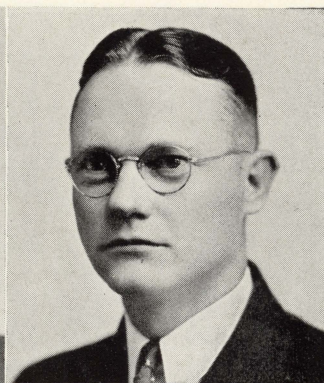




Mrs. Emma Fleer Muller
Dean



Butler Laughlin
President



William G. Wilson
School Administrator

Butler Laughlin

Mr. Laughlin's long and varied experience on elementary, high school, and college levels has won for him the distinction of being one of the outstanding school executives in the Chicago system. He came to Chicago in 1916, after having served in public schools in Indiana and Illinois, and taught mathematics at the Harrison Technical High School. His first contacts with the Normal College were made as an instructor, first in the Mathematics Department, and later in the Education Department. Mr. Laughlin soon decided to enter the administrative field, in which he has since made rapid and steady progress. Principal of the Libby Elementary School in 1924; principal of the Parker Senior High School in 1926; president of the Chicago Normal College in 1928; and Dean of the South Side Junior College in 1934—these are the steps in his remarkable progress to public recognition. His capacity for educational leadership secured for him the chairmanship of the important Education Committee of the Chicago Principals' Club. Mr. Laughlin is a member of the National Honor Fraternity in Education, Phi Delta Kappa. Outdoor sports including tennis, fishing, and hunting are his chief diversions.

Mrs. Emma Fleer Muller

A graduate of Marquette University and the University of Chicago, Mrs. Emma Fleer Muller has had wide experience in teaching and administrative fields. As instructor of music at Marquette, she had the unique experience of returning to her Alma Mater in a teaching capacity. Mrs. Muller also taught science at Normal, and was assistant in physiology at the University of Chicago before she became our Dean. Mrs. Muller has held important positions in the Illinois State and the National Deans' Associations. Her program also provides a place for tennis, good plays, and travel, as well as for her hours of work.

William G. Wilson

Steady upward climbing has been characteristic of the career of William G. Wilson, our School Administrator. A graduate of Normal, Armour, and the University of Chicago, Mr. Wilson began his teaching experience as an instructor of manual training in the Chicago schools. He also taught woodwork, electrical construction and general science at Austin High School. In 1925, Mr. Wilson came to Normal, first as an Industrial Arts instructor, and later as a member of the Education Department. In February, 1934, he assumed his present position. Mr. Wilson likes to occupy his spare time with motoring, fishing, and hunting.



EDUCATION AND PSYCHOLOGY DEPARTMENTS

Standing—Mr. John J. De Boer, Mr. Sol R. Eilert, Mr. Lyle Wolf.

Seated—Mrs. Katherine B. Seaman, Dr. Denton L. Geyer, Mr. Edwin Brye, Miss Marie A. Hallinan.



SCIENCE AND HOUSEHOLD ARTS DEPARTMENTS

Standing—Dr. John H. Whitten, Dr. Beals French.

Seated—Mrs. Dorothy Phipps, Dr. Earl E. Sherff, Miss Mary E. Freeman.



ENGLISH AND MATHEMATICS DEPARTMENTS

Standing—Mr. W. Wilbur Hatfield, Mrs. Ina Stannard*, Dr. John T. Johnson.

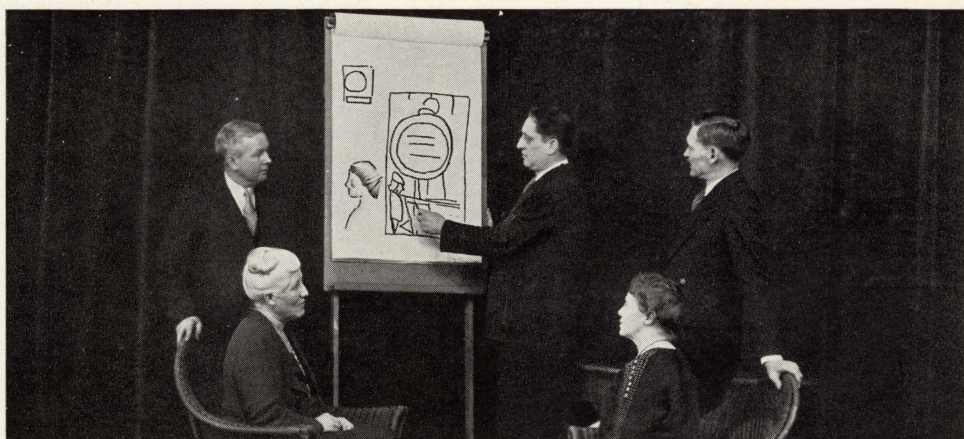
Seated—Miss Sophia Camenisch, Miss Alta Turk.

* Substituting for Miss Louise Jacobs, who is on a Sabbatical leave of absence.

GRAPHIC AND
INDUSTRIAL ARTS
DEPARTMENTS

Standing—Mr. Frank X.
Henke, Mr. Henry G. Geilen,
Mr. Elmer A. Morrow.

Seated—Miss Jean Hutch-
ison, Miss Agnes Doyle.



SOCIAL STUDIES
AND KINDERGARTEN-
PRIMARY
DEPARTMENTS

Standing—Mr. James I.
Swearingen, Dr. Fred K.
Branom, Mr. George Tur-
ner.*

Seated—Miss Ellen M.
Olson, Miss Dorothy E.
Willy.



MUSIC DEPARTMENT

Miss Frances Peickert,
Miss Catherine M. Taheny.



*Substituting for Mrs. Lucie Schacht, who is on a Sabbatical leave of absence.

PHYSICAL
EDUCATION
DEPARTMENT

Miss Louise Robinson, Mr.
Joseph Kripner, Mrs. Nellie
B. Cochran.



OFFICE
ASSISTANTS

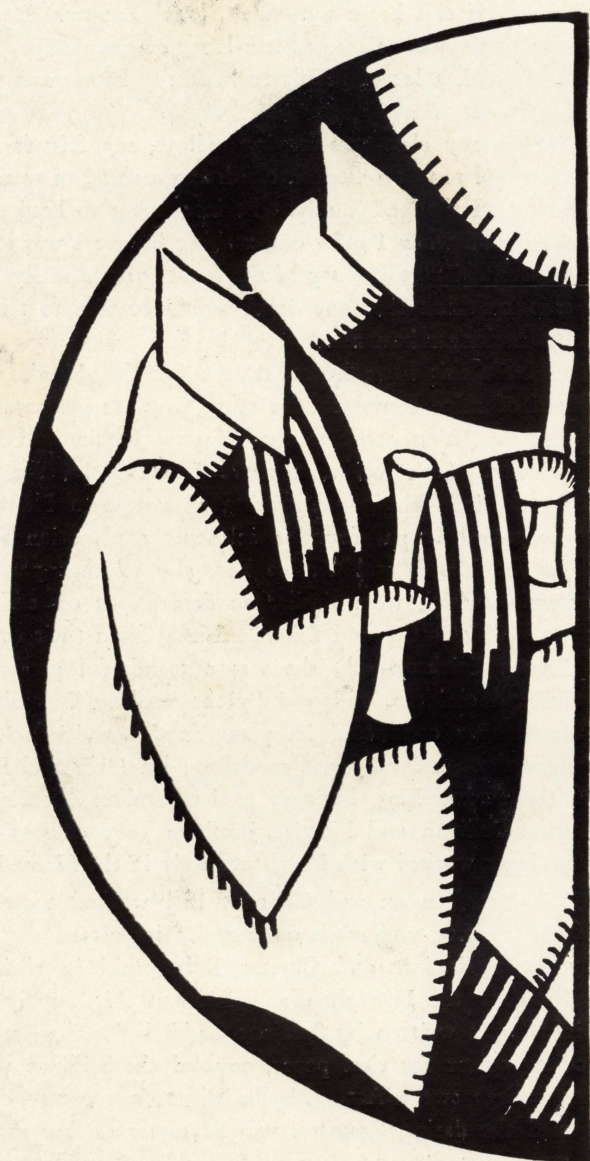
Miss Sophie Reker, Miss
Ann Boyle, Miss Helena Cor-
coran, Mrs. Mabel Lulu, Mrs.
Elizabeth B. Murphy.



LIBRARIANS

Miss Bessie Reams, Miss
Flora Bates, Miss Jenny Ten
Cate, Mrs. Lorene Johnstone.





GRADUATES

Looking Back on the Future

"What, Jackie? Another story tonight? Your Granny will soon be running out of stories if this keeps up. Well, let's see now. I think I'll tell you about a Story House I've made. I started it a long, long time ago, Jackie, and it isn't quite finished yet. It took a lot of people to build my house, and they didn't even know they were doing it.

"When my class was leaving college, my friends and I used to wonder how our lives would unfold. Foolish children we were, to want to hurry the precious moments we had! I thought it might be interesting to keep a real history of the class, which I could read when I grew old, making believe I was still the young girl trying to read the future. But this story of the future would really be true. It made me feel magic, Jackie, to think that one day I would be able to tell their stories, even though they could no longer hear me.

"I built this little house, except for the shingles on the roof; and every time a friend of mine completed his story, I wrote his name on a shingle, and tacked it to the house. You point to the shingles, Jackie, and I'll tell you about the person it represents. Let's see, that one? Leona Stein, the well-known Egyptologist, made her mark indelible by uncovering an unknown Pharaoh's tomb. Betty Vogeley, who accompanied Leona, found a scientific explanation for King Tut's dreaded "curse." Alyss De Marais and Clarice Lee, also of that party, found some drawings in the pyramids which were similar to decorations on early Arabic objects brought back by Alice McCarthy and Elinor Elisberg from their expeditions to Northern Africa.

"Ruth Erickson—ah, she was a wonderful person—founded a school for underprivileged children, endowed by the wealthy Colomba Zerega. Mamie Zaretsky and Ada Sexauer conducted its playground activities; Lucile Walp and Eleanor Young taught dress-designing and modeling; Ed Uber and Harold Winegar opened a branch of their advertising business to be conducted entirely by the boys of the school. Lucille Sullivan and Harriet Jacobsen gave courses in Social Etiquette; and Elvera Streisinger worked with Margaret Liddy in the Home Makers Department.

"Walter Johnson and Clarence Bell worked together on the mathematical aspect of the planets, and made some really important discoveries which were later proved by Jacob Knaizer and Chester Dobrzynski in their stratosphere trips taken in a balloon of the Henaghan and Riordan Air Supply Company. Accounts of these flights were written by Sarajane Caddick for the Bard Daily Post. Lillian Anderson, society editor for that paper, covered the brilliant wedding of Rosanna Garrison to her college sweet-'Art. Phyllis Ebert, a reporter on a German periodical, accompanied the daring Countess von Bruckner on her many submarine excursions.

"The Blakeway-Byrne-Conover trio made great strides in the study of light rays. Mary Leonard made use of their discoveries to perfect a cure for tuberculosis.

"Thelma Lundgren and Alfild Molander spent their lives helping old people find a place in the world by helping to rouse their interest in some of the many activities in the Mo-Lund Home.

"Cecelia McGough, that beloved soprano of the Metropolitan Opera, left a world which will love her forever. June Rades inherited a wealthy estate and with the help of Mary Rita Davis and Linnea Lindquist, changed it into a beautiful children's recreation center.

"I have just attached the last shingle I'll be able to tack on, for someone else will have to put my shingle on the roof. You see, Carol Wise, the famous psychiatrist, completed her great work yesterday, and the ink is still drying on her page in history."

MARY B. CUMMINGS.



Officers of the Class of February, 1936

President	Elizabeth Vogeley
Vice President	Clarice Lee
Secretary	Elinor Elisberg
Treasurer	Lucille Sullivan
Historian	Cecilia McGough

CLASS COMMITTEES

COMMENCEMENT COMMITTEES

<i>General Chairman</i>
Harold Winegar
<i>Class Gift Committee</i>
Colomba Zeraga, Chairman
Gertrude Riordan
<i>Cap and Gown Committee</i>
Alfhild Molander, Chairman
Lois Bruckner
<i>Pin and Ring Committee</i>
Thelma Lundgren, Chairman
Phyllis Ebert
<i>Tickets and Announcements Committee</i>
Ada Blakeway, Chairman
Sarajane Caddick
Margaret Liddy
<i>Printing Committee</i>
Ruth Erickson, Chairman
Clarence Bell
Jacob Knaizer
<i>Secretarial Committee</i>
Ada Sexauer, Chairman
Mary Rita Davis
<i>Class Song Committee</i>
Cecilia McGough

PROM COMMITTEES

<i>General Chairman</i>
Elizabeth Bard
<i>Arrangements Committee</i>
Harriet Jacobsen, Chairman
Rosanna Garrison
Walter Johnson
<i>Music Committee</i>
Virginia Henaghan, Chairman
Edward Uber
Eleanor A. Young
<i>Invitations and Bids Committee</i>
Mary Leonard, Chairman
Delia Cesario
Alice McCarthy
<i>Publicity Committee</i>
Alyss De Marais, Chairman
Mary B. Cummings
Leona Stein

CLASS DAY COMMITTEES

<i>General Chairman</i>	<i>Entertainment Committee</i>
June Rades	Lillian Anderson, Chairman
<i>Luncheon Committee</i>	Marie Cronin
Carol Wise, Chairman	Rochelle Pritzker
Lucile Walp	Mamie Zaretsky
Elvera Streisinger	Adeline Bodian

Lillian M. Anderson, 651

Cui Bono, 4-6; Class Vice President, 3-4; Section Chairman, 5-6; Social Hour Committee, 2; Student Council Publicity Chairman, 6; Captain Ball Mgr., 4; Ping Pong Mgr., 6; Class Day Entertainment Chairman, 6; Geography Club, 1-6; Special Choir, 6; Little Theatre, 4-6.

Elizabeth Bard, 652

Cui Bono, 4-6; Geography Club, 1-6, President, 5; Prom Committee, General Chairman, 6; Section Chairman, 5-6; Student Council Delegate, 6; May Festival Court of Honor, 5; Class Historian, 3-4; W.A.A. Representative, 3; Special Choir, 5.

J. Clarence Bell, 652

M.A.A. Treasurer, 5; Track, 3; Class Printing Committee, 6; Math Club, 1-6.

Ada Blakeway, 651

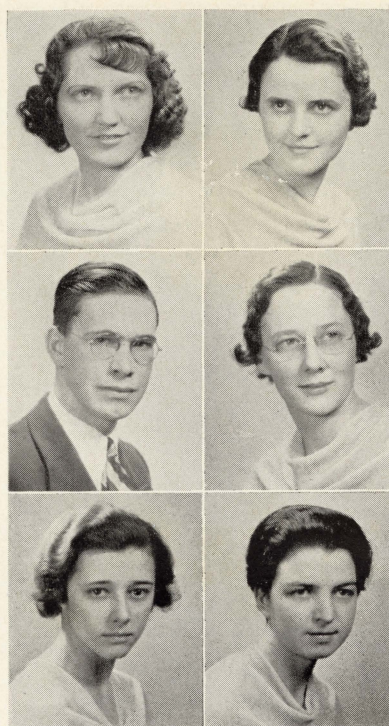
Cui Bono, 4-6; Class Vice President, 1-2; Lunchroom Committee, 3; Social Hour Committee, 3; Ticket and Announcement Committee, 6; Commencement Decoration Committee, 6; Class Social Committee Chairman, 2; Swimming Team, 5; Fellowship Representative, 4; Little Theatre, 2-4; Geography Club, 2-5.

Lois Bruckner, 651

Fellowship Representative, 1; Normalite Reporter, 1-3; Creative Writing Club, 1; Special Choir, 2-6.

Mary Irene Byrne, 700

Y.W.C.A., 2-6; Section Chairman, 7; Geography Club, 1-3; Science Club, 5; Poetry Club, 4; Archery, 1-3.



Sarajane Caddick, 652

Executive-Judiciary Committee, 4; Normalite Staff, 1-3; Emblem Feature Staff, 6; Class Announcements Committee, 6; Geography Club, 2-4; Little Theatre, 3-5.

Eleanor Conover, 700

Little Theatre, 1-3; Geography Club, 1-3; Ping Pong, 1; Volley Ball, 1; Captain Ball, 1, 4; Education Assembly, 6.

Mary B. Cummings, 651

Student Council President, 6; Cui Bono, 6; Class Treasurer, 1-2; Normalite, 1-6, News Editor, 5; Emblem Feature Editor, 6; Prom Publicity Committee, 6; Class Song Committee, 6; "International Revue," 5; Geography Club, 1-6; Little Theatre, 3-6; Special Choir, 6.

Mary Rita Davis, Kg. 6

Section Chairman, 1-6; Fellowship Representative, 1-6; Student Daily Representative, 1-5; Fudge Committee, 4-5; Class Nominating Committee, 1-2; Class Budget Committee, 5-6; Class Secretarial Committee, 6; Kg.-Primary Club, 1-6; Swimming Club, 4-5.

Alyss Helen De Marais, 651

Designer of Costumes for Festivals, 2-6; Class Nominating Committee, 5; Prom Publicity Chairman, 6; Student Daily Representative, 5-6; Geography Club, 1-3; Archery, 3; Sketch Club, 1-2.

Chester S. Dobrzynski, 652

Cui Bono, 3-6; Math Club Assembly, 6; Education Department Assembly, 6; Foreign Culture Club Chairman, 3.

Phyllis Ebert, 652

Pin and Ring Committee, 6; Student Daily Committee, 2; Freshman Tea Committee, 5; Normalite, 1; Geography Club, 1-4; Little Theatre, 4-5.

Elinor Elisberg, 651

Class Secretary, 5-6; Cui Bono, 4-6; Social Hour Committee, 2; Executive-Judiciary Committee, 3; Geography Club, 1-4; Archery, 3; Mask Club, 2.



Ruth M. Erickson, 651

Section Art Chairman, 4; Class Nominating Committee, 1, 3, 5; Student Daily Representative, 4; Fellowship Representative, 5; Class Printing Chairman, 6; Geography Club, 2-6; Sketch Club, 3-6; Emblem Staff, Senior Write-Ups, 6.

Rosanna Garrison, 651

W.A.A. President, 6; Major "N," 6; Minor "N," 3; Inter-Collegiate Swimming Team, 1-6; Red Cross Badge, 3; All-Star Volley Ball, 5; Section Relay Team, 2, 4, 6; Fellowship Program Chairman, 5; Representative, 4; Student Council Representative, 3; Swimming Club, 3; Geography Club, 4.

Augusta L. Weber Guzman, F. T.

Swimming Club; Math Club.

Virginia Henaghan, 651

Geography Club, 1-4; Little Theatre, 1, 2, 4; Class Nominating Committee, 1; Class Social Committee, 2; Social Hour Committee, 2, 5, 6; Prom Music Chairman, 6; Math Club, 3-4; Social Dancing Club, 1-4.

Harriet Jacobsen, 652

Prom Arrangements Committee Chairman, 5-6; Cui Bono, 5-6; Little Theatre, 1-6; Treasurer, 3; President, 4; Social Hour Chairman, 5; Student Council Health Committee, 3; Class Publicity Committee, 3-4; Class Social Committee, 1-2; Geography Club, 1-4; Pro-Con Club, 4.

Walter R. Johnson, 652

Class President, 1; M.A.A. President, 4; Fellowship Treasurer, 4; Student Council Representative, 2; Tennis, 3; Geography Club, 2-4; Math Club, 2-3; Pro-Con Club, 4; Sketch Club, 6; Little Theatre, 1.

Jacob Knaizer, 652

Class Publicity Committee, 3-4; Class Printing Committee, 6; Emblem Advertising Committee, 6; Normalite, 2-3; Pro-Con Club, 3-6; Social Dancing Club, 2-4; Little Theatre, 1-2.

Clarice Lee, 651

Class Vice President, 5-6; Cui Bono, 4-6; Class Social Chairman, 5-6; Emblem Publicity Committee, 6; Fellowship Representative, 1-2; W.A.A. Representative, 5-6; Baseball Mgr., 3; All-Star Captain Ball, 2, 4; Little Theatre, 1-6; Geography Club, 2-5.

Mary Leonard, 652

Class President, 1-2; Fellowship President, 5; Vice President, 4; Geography Club Secretary, 3; Prom Bids Committee Chairman, 6; Section Chairman, 3-4; Student Council Nominating Committee, 2, 4, 6; Class Auditing Chairman, 3-4; Hall Duty Chairman, 4.

Margaret Liddy, 651

Student Council Nominating Committee, 3; Tickets and Announcements Committee, 6; Math Club, 3-6.

Thelma Lundgren, 651

W.A.A. Secretary, 2; Student Council Alternate Representative, 6; Pin and Ring Chairman, 6; Women's Lounge Committee, 4; Captain Ball Mgr., 6; All-Star Volley Ball, 3; Geography Club, 1-3.

Alfhild Molander, 652

Cui Bono, 4-5; Class Nominating Committee, 3; Class Social Committee, 3; Cap and Gown Chairman, 6; Geography Club, 2-5.

Alice Mary McCarthy, 652

Cui Bono, 5-6; Little Theatre, 1-6; President, 5; Secretary, 4; Emblem Associate Editor, 6; Captain Ball Mgr., 2; Geography Club, 2-5.

Cecilia McGough, 651

Special Choir, 1-6; President, 5; Cui Bono Secretary-Treasurer, 6; Class Historian, 5-6; Class Program Committee Chairman, 1; Student Advisers Committee, 6; Class Song Committee Chairman, 6; Geography Club, 2, 4, 5.



June Rades, 652

Student Council Secretary, 4; Social Hour Chairman, 4; Class Day Chairman, 6; Pro-Con Club President, 3-5; Geography Club, 1-4; Emblem Advertising Mgr., 6; Little Theatre, 1-2.

Gertrude Riordan, 651

Section Chairman, 1-2; Class Program Chairman, 3-4; Class Gift Committee, 6; Geography Club, 1-5; Little Theatre, 1-2; Math Club, 3-4.

Ada Sexauer, 651

Cui Bono, 4-6; Emblem Sports Staff, 6; Swimming Mgr., 6; Swimming Club, 1, 3, 4, 6; Archery, 2, Mgr., 5; Geography Club 1-6; Red Cross Life Saver; Normalite, 1-2.

Leona Stein, 652

Cui Bono, 3-5; Prom Publicity Committee, 6; Little Theatre, 1-4; "The Charm School," 3; Geography Club, 1-5; Pro-Con Club, 2-5.

Elvera Streisinger, 652

Little Theatre, 1; Special Choir, 2-5; Pro-Con Club, 2; Sketch Club, 4.

Lucille A. Sullivan, 651

Class Treasurer, 5-6; Student Council Representative, 5; Fellowship Representative, 3; Emblem Representative, 6; Special Choir, 2-6; Little Theatre, 1, 3, 4; Geography Club, 1, 2, 4.



Edward J. Uber, 652

Little Theatre, 1-6; Vice President, 4; Normalite, 3-5; Sports Editor, 5; Track, 3; Major "N," 3; Ward Chairman "Keep-Normal-Open" Committee, 1; Social Hour Committee, 5-6; Prom Committee, 5; Industrial Arts Club, 1.

Elizabeth May Vogelei, 651

Class President, 5-6; Cui Bono, 5-6; Little Theatre, 1-6; Make-Up Chairman, 5; Geography Club, 4-5; Music Committee Chairman, 5; Normalite, 5.

Lucile M. Walp, 652

Class Treasurer, 3-4; Cui Bono, 4; Little Theatre, 1-6; Treasurer, 5; Fellowship Representative, 3-5; Rose Sale, 5; Class Nominating Chairman, 4; Class Luncheon Committee, 6; Student Daily Censor, 5.

Harold D. Winegar, 652

Fellowship Treasurer, 4; Service Committee, 3; Section Chairman, 1-2; Commencement, General Chairman, 6; Student Council Auditing Chairman, 5; Student Daily Committee, 2; Class Song Committee, 6; M.A.A. Orchestra, 3-5.

Carol Wise, 651

Student Council Fee Accountant, 4; Cui Bono, 4-6; Class Secretary, 3-4; Little Theatre Treasurer, 2; Emblem Staff, Assistant Business Mgr., 6; Tennis Mgr., 3; Fellowship Representative, 6; Class Luncheon Chairman, 6; Small "N," 3; Geography Club, 1-6.

Eleanor Ann Young, 652

Cui Bono, 4-6; W.A.A. Secretary, 4; Representative, 5-6; May Festival Court of Honor, 5; Executive-Judiciary Committee, 2; Class Nominating Committee, 1-2; Prom Committee, 6; Kg.-Primary Club, 3; Natural Dancing Club, 2-3.

Mamie Zaretsky, 651

Cui Bono, 4-6; Student Service Committee Chairman, 6; All-Star Volley Ball, 2, 4; Little Theatre, 1-3; "The Charm School," 3; Class Day Committee, 6; Special Choir, 1-4.

Colomba G. Zerega, 652

Cui Bono, 4-6; Class President, 3-4; Emblem Staff, Senior Write-Ups, 6; Class Gift Chairman, 6; Special Choir, 1-6; Geography Club, 1-3; Little Theatre, 1-3.

Our April Graduates



Edith R. Bernstein, 700

Art Guild, 1-2; Geography Club, 1; Math Club, 5-6.

Adeline Bodian, 700

Cui Bono, 3-4; Special Choir, 2-5; Art Guild, 2-3.

Chester T. Breneman, C. G.

C. G. Club Vice President, 3; Spanish Club Vice President, 3; Executive-Judiciary Committee, 1; Lunchroom Committee Chairman, 1; Math Club, 3; Geography Club, 2; Science Exhibit Arrangements Committee Chairman, 3.

Delia Cesario, 700

Mary Honan, C. G.

C. G. Club, 1-3; Art Chairman, 3; Art Exhibit, 2; Geography Club, 1-2.

Corinne Murnighan, C. G.

C. G. Club, 1-3; Geography Club, 1-2.

Aldan O'Hearn, C. G.

C. G. Club Treasurer, 3; Student Council Representative, 1-2; Student Council Constitution Committee, 2; Social Hour Committee, 2; Geography Club, 1; Math Club, 3; Student Assembly, 2.

John O'Hearn, C. G.

Fellowship Representative, 3; Geography Club, 1; Math Club, 3; C. G. Club, 2-3.

Perside Periolet, C. G.

Art Guild, 2; Geography Club, 1; C. G. Club, 1-3.

Thelma Pratt, 700

All-Star Captain Ball, 3; All-Star Baseball, 4; All-Star Volley Ball, 5; Archery, 2.

Rochelle Pritzker, 700

Section Chairman, 2-3; Kg. Club, 1-6; Y. W. C. A., 1-6; Swimming Club, 5-6.

Morris G. Solomon, 700

Cui Bono; "N" in Baseball; "N" in Basketball; "N" in Track; All-State Basketball Team; M. A. A. Secretary, Math Club, Normalite.

Frank Thomson, C. G.

C. G. Club President, 2, Vice-President, 1; Math Club Vice President, 2; Student Council Auditing Committee Chairman, 2; Student Service Committee, 2.

Jessie Viehoff, C. G.

Special Choir; Little Theatre; Geography Club; Science Club; C. G. Club.



A Glance to the Future

A blare of bugles, and the crowd begins to sway rhythmically to the smooth strains of Channon H. Krupsky's Tune Ticklers, the melodic music permeating the stately halls of the Gubernatorial Mansion at Springfield. Many nationally-famed celebrities have come to attend the inaugural ball; strange as it may seem, most of them were former classmates at the Chicago Normal College in 1936. The affair was successfully planned by Miss Bunny Spain, social secretary to His Excellency, and her able assistants, Rosemary Dushek and Marge Newlands.

In the center of the ballroom is Marge Klein, composer of the nation's latest hit tunes, and Anna Keating, dramatic star, doing the "rhumtang," the latest in ballroom dancing. Eagerly applauding their efforts are two of the country's leading newspaper hawks, Bob Cleary and Evelyn Glazer; also Bernice Kuellmer, Olga Yarmoluk, Irene Liszt, and Rose Ann Schatzman, who are raising ballroom dancers of their own. Over in a corner we see Elaine Skelton, leader of the Illinois Philharmonic Orchestra, arguing with Glen Armstrong about the merits of symphony music and jazz. Eagerly listening to the discourse are Ed Quinn, the screen's greatest lover; Louise Savage, radio's outstanding comedienne; Myrtle Lynch, child psychologist; and Betty Cowell, interpreter of the modern dance.

A hush has come over the assembly, as the program is about to begin. The first number is the "Swell Song," from "Like Me," sung by Dorothy Horrocks. Next Alberta Maxwell reads her annual ode to Spring. An excerpt from the play, "As Millions Sneered," written by Mary Simpson and Marge O'Brien, is presented, with Helen Marie Murphy, Augie Flugel, Joel Walters, Dolores Hurney, Rose Davis, and Elizabeth Fosse in the stellar roles. Now we have a panel discussion, headed by Olive May Wilhelms, on the philosophical merits of being a May Queen. Her committee consists of Rachel Rosen, Elien Levander, Alice O'Shea, Marian Riordan, Ruth Porter, and Esther Garber. A vote is taken and Lucile Rice, wife of a leading optometrist, says "The eyes have it!"

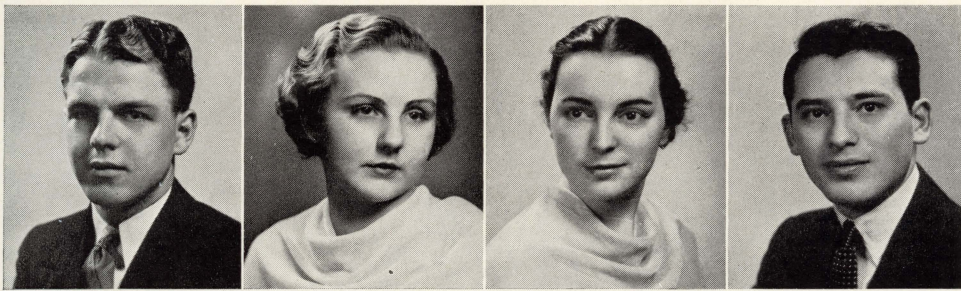
The trumpets now introduce a million dollar fashion show, presented by Mademoiselle Marguerite Clinchay, leading stylist, who knows what the well-dressed woman should not wear. The models are Josephine McGrath, one of the 400; Libuse Baitel, head of the Meat Packers' Union; Frances Reedy and Florence Wiaduck, champs of women's tennis and golf; and Edna Sonken, president of the National Baseball League. Following this, we have a series of talks on World Travel, given by the globe-trotters, Eugenia Shea, Ethel Steinberg, Martha Bolling and Grace Martinek. A musical sextet is next, featuring the harmonious voices of Eleanore Young, Lillian Bencur, Marge Johnson, Fred Gunderman, Flo Westermeyer, and Julia Giles.

We settle down for a long debate, "Is Progressive Education better in city or country schools?" The participants are Ruth O'Connor, Ruth Duff, Mary Leyden, and Kay Bonfield. Judges of the debate are Evelyn Savage, Dean of Teachers' College at Columbia; Betty Sundmacher, president of the Illinois P.-T.A., and Ray Goodwin, head of the Board of Education.

The program finally comes to its close with the announcement "refreshments are served. . . .," and there we find none other than Amalia Monaco and Felicia Pacelli behind the old familiar samovar. The catering service is ably supervised by Marge Fitzgibbons, who is now a retired movie queen. The rooms are beautifully decorated through the cooperation of the nation's outstanding artists, Gert Roy, Mally Gilbert and Ruth Kennedy. A picture of the assembled group is taken by none other than Josephine Nohelty; it is to be hung in Marge Krafft's chateau in France.

And now, who is responsible for this reunion? Why, none other than your friend, Mary Roy, who has become the wife of His Excellency, the Governor!

MARY ROY.



Officers of the Class of June, 1936

President	August Flugel
Vice President	Florence Wiaduck
Secretary	Olive May Wilhelms
Treasurer	Channon H. Krupsky

CLASS COMMITTEES

COMMENCEMENT COMMITTEES

General Chairman

Eleanore M. Young

Cap and Gown Committee

Rachel Rosen, Chairman

Edna Sonken

Margaret Fitzgibbons

Secretarial Committee

Margaret O'Brien, Chairman

Betty Cowell

Mary Simpson

Pin and Ring Committee

Felicia Pacelli, Chairman

Olive May Wilhelms

Alice O'Shea

Tickets and Announcements Committee

Josephine McGrath, Chairman

Myrtle Lynch

Ruth Kennedy

Printing Committee

Fred Gunderman, Chairman

Joel Walters

Glen Armstrong

Class Song Committee

Helen Marie Murphy, Chairman

Florence Westermeyer

CLASS DAY COMMITTEES

General Chairman

Elaine Skelton

Luncheon Committee

Amalia Monaco, Chairman

Kathryn Bonfield

Ruth Porter

Entertainment Committee

Eugenia Shea, Chairman

Edward Quinn

PROM COMMITTEES

General Chairman

Betty Sundmacher

Arrangements Committee

Marguerite Klein, Chairman

Dorothy Horrocks

Olga Yarmoluk

Music Committee

Channon H. Krupsky, Chairman

Marjorie Newlands

Margaret Johnson

Invitations and Bids Committee

Libuse Baitel, Chairman

Frances Reedy

Bernice Spain

Publicity Committee

Elizabeth Fosse, Chairman

Mary Leyden

Ruth O'Connor

Emblem Committee

Evelyn Glazer, Chairman

Robert Cleary

Eugenia Shea

Rose Davis

Mally Gilbert

Lillian Bencur

Program Committee

Marguerite Klein, Chairman

Elaine Skelton

Eleanore M. Young

Channon H. Krupsky

Helen M. Murphy

Social Committee

Betty Sundmacher, Chairman

Amalia Monaco

Olga Yarmoluk

Elizabeth Fosse

Libuse Baitel

Dorothy Horrocks

Auditing Committee

Edna Sonken, Chairman

Rachel Rosen

Glen Armstrong

Rose Arden, C.G.

Pro-Con Club; Literary Club; C. G. Club.

Glen Armstrong, 602

Cui Bono, 3-6; Science Club, 1-6, President, 4, Vice President, 3; Photography Club, 2-6; Section Chairman, 2; Athletic Mgr., 1-2; Tennis Team, 2; Student Council Auditing Committee, 4; Class Publicity Chairman, 2-3; Class Nominating Committee, 5; Orchestra, 1-6; M.A.A. Orchestra, 3.

Libuse Baitel, 601

Student Council President, 6, Secretary, 4; Cui Bono, 3-6; Section Chairman, 2, 3, 5; Geography Club, 1-6, President, 3; Math Club Vice President, 5; Executive-Judiciary Committee, 4; Prom Invitations and Bids Chairman, 5-6; Class Social Committee, 3-6; Delegate College Conference of Extra-Curricular Activities, 3-5.

Lillian Bencur, 602

Emblem Art Staff, 5-6; Fellowship Rose Sale, 3; W.A.A. Representative, 4-6; Geography Club, 1-3.

Martha Helen Bolling, 603

Class Nominating Committee, 3; Student Council Bulletin Board Committee, 3; Fellowship Representative, 2; Geography Club, 1-3.

Kathryn Bonfield, 601

Cui Bono, 4-6; Class Treasurer, 1-2; Social Hour Committee, 4; Student Council Bulletin Board Committee Chairman, 3; Student Advisers Committee, 6; Class Social Committee Chairman, 3-4; Fellowship Rose Sale, 3; Little Theatre, 1-6; Geography Club, 1-6.



Elizabeth Boyle, C.G.

Geography Club; Science Club; Literary Club; Special Choir; C. G. Club.

Robert E. Cleary, 602

Normalite, 3-6, Sports Editor, 5; Emblem Sports Staff, 5-6; Basketball, 1-2; Track, 2; Athletic Mgr., 3-4; Student Daily, 2; Student Service Committee, 6; Section Art Chairman, 3; Sketch Club, 4.

Margaret Clinch, 601

Cui Bono, 3-6; Little Theatre, 1-2; Student Daily Committee, 4; Spanish Club, 5-6; Geography Club, 1; Social Studies Assembly, 2, 5.

Betty May Cowell, 602

Hall Duty Committee, 4; Emblem Feature Staff, 5-6; Class Secretarial Committee, 6; W.A.A. Assembly, 2; Social Studies Assembly, 5; Creative Dancing Club, 1-2; Archery, 3; Little Theatre, 2.

Rose Davis, 603

Cui Bono, 3-6; Little Theatre Secretary, 4; Normalite Staff, 1-5, Advertising Mgr., 4-5; Emblem Advertising Staff, 5-6; Hall Duty Chairman, 5; Student Council Committee on Committees, 5; Fellowship Publicity Committee, 2; Geography Club, 1-4.

Ruth DeBoer, C.G.

C. G. Club.

Ruth Duff, 603

Student Daily, 1-2; Little Theatre, 1-4; All-Star Captain Ball, 1; Geography Club, 2-3.

Rosemary Dushek, 601

Normalite Representative, 1, 3, 6; All-Star Volley Ball, 2; Spanish Club, 5-6; Little Theatre, 1.



Helen Fitzgerald, C.G.

Math Club; Literary Club; C. G. Club.

Margaret Fitzgibbons, 602

Normalite Staff, 4; W.A.A. Representative, 3; All-Star Volley Ball, 2; All-Star Captain Ball, 3; Geography Club, 2-3; Y.W.C.A., 5.

August W. Flugel, 602

Class President, 5-6; Cui Bono, 4-6; Student Council Treasurer, 4; Basketball, 1-6; Baseball, 1, 2, 4, 6; Normalite Staff, 4-5; Social Hour Committee, 6; M.A.A. Nominating Committee, 5-6; Math Club, 6; Geography Club, 1; M.A.A. Assembly, 4-6; "International Revue," 4.

Elizabeth Fosse, 603

Cui Bono, 3-6; Fellowship President, 5, Vice President, 4, Rose Sale Chairman, 3, Representative, 2; Geography Club, 1-6, Vice President, 3; Social Hour Committee, 2, 4; Hall Duty Committee, 5; Emblem Staff, 6; Class Social Committee, 5-6; Prom Publicity Chairman, 6.

Esther Garber, 603

Special Choir, 1-2.

Mally Elaine Gilbert, 601

Student Council Fire Drill Committee, 4, Publicity Committee, 6; Emblem Art Chairman, 5-6; Designer of Costume, 4; Fire Marshal, 1-6; Geography Club, 3-6; Math Club, 4-6; Little Theatre, 4-5; Y.W.C.A., 6.

Julia Giles, 603

Cui Bono, 3-6; Big Sister Party Refreshment Committee, 4; Geography Club, 1-3; Repertoire, 1-2.

Evelyn F. Glazer, 602

Emblem, Editor-in-Chief, 5-6; Cui Bono, 4-6; Normalite, 1-6, News Editor, 5, Copy Desk Editor, 4; Special Choir, 3-6, Vice President, 5; Hall Duty Chairman, 4; Student Advisers Committee, 6; Section Chairman, 4; Fellowship Service Committee Chairman, 3; Class Auditing Committee, 1-2; Commencement Usher, 2-5.

Aidah Gregg, C.G.

Little Theatre; Geography Club; Science Club; C. G. Club; Student Daily Committee.

Fred Gunderman, 602

Boxing, Fencing, Ping Pong.

Elizabeth Hartigan, C.G.

Special Choir, 1-3; Geography Club, 1-3; C. G. Club, Tea Committee.

Katherine Hogan, C.G.

C. G. Club, Tea Committee; Literary Club; Geography Club.

Dorothy Horrocks, 601

Cui Bono, 3-6; Emblem Art Staff, 5-6; Prom Arrangements Committee, 6; Class Social Committee, 5-6; Sketch Club, 3-6; Science Club, 5-6; Social Studies Assembly, 5.

Dolores Hurney, 602

Fellowship Representative, 3-6; Little Theatre, 1-3; Geography Club, 1-2; Creative Dancing Club, 2; Class Assembly, 4; Swimming Meet, 3.



Margaret Johnson, 603

Cui Bono, 3-6; Women's Lounge Chairman, 4; Prom Committee, 6; Geography Club, 1-4; Foreign Culture Club, 3; "International Revue," 4; Repertoire, 1-2.

Anna M. Keating, 601

Cui Bono, 3-6; Fellowship Representative, 1, Service Committee Chairman, 4; Book Exchange Committee, 6; All-Star Volley Ball, 1; Geography Club, 1.

Ruth Kennedy, 603

Student Daily Chairman, 4-5; Fellowship Representative, 5; Student Council Publicity Committee, 5; Student Council Alternate, 5; Emblem Publicity Staff, 5.

Marguerite Klein, 601

Cui Bono, 3-6; W.A.A. President, 6, Vice President, 4, Representative, 1-6; Class Secretary, 1-2; Prom Arrangements Chairman, 6; Book Exchange Committee, 2; Student Advisers Committee, 5; Class Program Chairman, 4; Social Hour Committee, 5-6; Life Saving Club, 1-6.

Marguerite Krafft, 601

Little Theatre, 1-4; Geography Club, 1-3; Swimming Club, 4; Spanish Club, 5; All-Star Captain Ball, 1; Archery, 1-2; Ping Pong, 6; Y.W.C.A., 4.

Channon H. Krupsky, 602

Class Treasurer, 5-6; Cui Bono, 4-6; Orchestra, 1-6, Student Conductor, 5-6; P.T.S. Representative, 5-6; Social Hour Committee, 3-4; Class Assembly, 4; Education Week Assembly, 1; M.A.A. Assembly, 3-4; Geography Club, 2-3; Tennis Team, 2.



Bernice Kuellmer, 603

Y.W.C.A., 3-6; Little Theatre, 2-3; Geography Club, 3-4; Special Choir, 3-4.

Elien Levander, 603

Cui Bono, 3-6; Big Sister Party Refreshment Chairman, 4; Student Daily Committee, 3; Geography Club, 1-4; Class Nominating Committee, 3; Class Social Committee, 4; Repertoire Club, 1-2.

Mary Margaret Leyden, 601

Class President, 3-4; Cui Bono, 3-6; Student Council Nominating Committee, 4; Section Chairman, 3; Social Hour Committee, 3, 4, 6; Class Social Committee, 1-2; Geography Club, 1-6; Little Theatre, 1-6; Math Club, 4, 6.

Irene Liszt, 602

Section Chairman, 6; Emblem Art Staff, 5-6; Hall Duty Committee, 6; Class Nominating Committee, 1; Class Social Committee, 3; Little Theatre, 1-6, Make-up Chairman, 6; Geography Club, 2, 4, 6; Y.W.C.A., 4; Normalite Representative, 1, 2, 3, 5; Student Assemblies, 2, 5.

Myrtle Lynch, 602

Cui Bono, 3-6; Fellowship Representative, 3; Commencement Program Committee, 6; Class Nominating Committee, 2; Geography Club, 1-4; Swimming Club, 3; Y.W.C.A., 4-6; Social Studies Assembly, 5.

Grace F. Martinek, 603

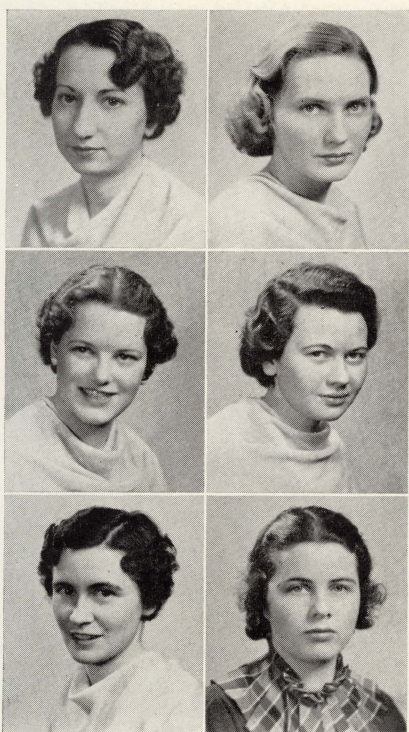
Cui Bono, 3-6; Big Sister Party Entertainment Committee, 4; Constitution Committee, 1; Special Choir, 1-5; Class Assembly, 4; Swimming Meet, 3.

Alberta Maxwell, 601

Special Choir, 1-6; Geography Club, 2-6; Little Theatre, 2-6; Y.W.C.A., 5-6; P.T.S., 5-6.

Josephine McGrath, 603

Cui Bono, 3-6, Secretary, 4; W.A.A. Secretary, 5; Student Council Alternate, 5; Book Exchange Committee, 4, Chairman, 5; Emblem Assistant Circulation Mgr., 5-6; Pin and Ring Committee, 6; Student Council Committee on Committees, 5; Geography Club, 2-4.



Amalia Monaco, 601

Cui Bono, 6; Section Chairman, 6; Fellowship Representative, 1, 2, 5, 6, Service Committee Chairman, 6; P.T.S. Tea Co-Chairman, 4; Student Council Party Chairman, 6; Class Social Committee, 3; Class Program Chairman, 4; Little Theatre Business Chairman, 5; Y.W.C.A. Publicity Chairman, 4.

Helen Marie Murphy, 603

Cui Bono, 3-6; Little Theatre, 1-6, Players' Group Chairman, 3-5, "Charm School," 2; Social Hour Committee, 4; Class Social Committee, 3-4; Class Song Committee, 5-6; Fellowship Rose Sale, 4; "International Revue," 4; Special Choir, 2-4.

Marjorie Newlands, 602

Prom Committee, 6; Swimming Meet, 3; Geography Club, 3; Social Studies Assembly, 2, 5; Social Hour Committee, 4.

Josephine Nohelty, 603

Cui Bono, 3-6; Section Art Chairman, 2; Exhibition of Photographs, 5; Geography Club, 1-4; Poetry Club, 2; Camera Club, 5-6; Foreign Culture Club, 3.

Margaret C. O'Brien, 601

Student Council Party Committee, 6; Class Secretarial Chairman, 6; Little Theatre, 1-6; Geography Club, 1-6; Math Club, 5-6; Special Choir, 1.

Katherine O'Connor, C.G.

C. G. Club.

Ruth O'Connor, 603

Student Daily Representative, 1; Geography Club, 1, 2, 5, 6; Archery, 1-2; Poetry Club, 2; Repertoire Club, 1-2.

Fuller O'Malley, C.G.

C. G. Club Secretary; C. G. Tea Committee Chairman; Geography Club; Literary Club.

Alice O'Shea, 603

May Festival Court of Honor, 6; Class Secretary, 3-4; Class Social Committee, 5-6; Pin and Ring Committee, 5-6.

Felicia M. Pacelli, 601

Cui Bono, 3-6; Geography Club, 1-6, Vice President, 4; Student Advisers Committee, 5; Student Council Party Committee, 6; P.T.S. Committee Chairman, 6; Fellowship Representative, 1, 3, 4; Commencement Usher, 3-5; Pin and Ring Chairman, 6; Y.W.C.A., 4-6; Little Theatre, 1-4.

Ruth Porter, 603

W.A.A. Vice President, 5; Student Council Health Committee, 3; Hall Duty Committee, 4; Fellowship Refreshment Committee, 1-2; Commencement Usher, 3-5.

Eleanor Przybylo, C.G.

C. G. Club; Math Club; Literary Club; Geography Club.

Edward Quinn, 602

Basketball, 1-4; Track, 1; Baseball, 3-4; Orchestra, 1-6; Science Club, 4; Archery, 3.

Paul F. Quinn, C.G.

Cui Bono; C. G. Club Treasurer; Spanish Club President; Social Hour Committee; Fellowship Service Committee; Math Club; Geography Club.



Frances Reedy, 601

W.A.A. Representative, 1; Ping Pong Mgr., 3, 4, 6; Tennis Team, 3-4; Fellowship Representative, 2; Book Exchange Committee, 6; Delegate to U. of C. Athletic Convention, 4.

Lucile Rice, 602

May Festival Court of Honor, 6; Class Day Committee, 6; Fellowship Rose Sale, 2; Little Theatre, 1-3; Special Choir, 1-2; Geography Club, 3-4; Y.W.C.A., 6; Social Studies Assembly, 5.

Marian Riordan, 603

Women's Lounge Committee, 3; Little Theatre, 1-6; Geography Club, 2, 4; Math Club, 5.

Rachel Rosen, 601

Cui Bono, 4-6; Emblem Staff, Senior Write-Ups, 5-6; Student Council Auditing Committee, 4; Book Exchange Committee, 6; Class Constitution Chairman, 1, Publicity Committee, 3-4, Nominating Committee Chairman, 4, Auditing Committee, 5-6; Cap and Gown Chairman, 5-6; Geography Club, 2, 3, 6; Y.W.C.A., 3, 6.

Gertrude Roy, 602

Geography Club, 2; Sketch Club, 3-6; Y.W.C.A., 5-6.

Mary Roy, 601

Section Chairman, 2; Class Constitution Committee, 1; Normalite, 3-6; All-Star Captain Ball, 3; Archery, 1; Geography Club, 4; Y.W.C.A., 4; Math Club, 5-6.



Evelyn Savage, 603

Fellowship Representative, 1-2; Foreign Culture Club, 3; Sketch Club, 4; Geography Club, 1-6.

Louise Savage, 601

Geography Club, 1-3; Spanish Club, 4-5.

Rose Ann Schatzman, 602

Cui Bono, 4-6; Social Hour Committee, 6; Fellowship Rose Sale, 4; Sketch Club, 4-5; Geography Club, 1-5; Y.W.C.A., 4; Archery, 1-2; Student Assembly, 5.

Joan Scully, 700

Archery, 4; Special Choir, 6; Geography Club, 4.

Eugenia Shea, 603

Cui Bono, 3-6; Fellowship Vice President, 5, Representative, 4; Geography Club, 1-6, Secretary, 4; Section Chairman, 3-6; Normalite Business Mgr., 4-6; Emblem Business Mgr., 5-6; Book Exchange Chairman, 4; Student Advisers Committee, 5; Commencement Usher, 3-5.

Mary Simpson, 601

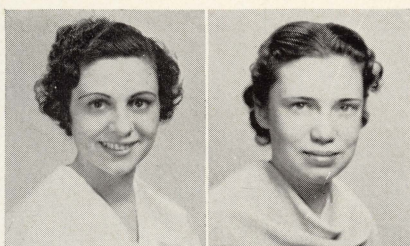
Cui Bono, 4-6; Fellowship Representative, 3, Rose Sale, 3; Class Secretarial Committee, 5-6; Geography Club, 1-2; Special Choir, 2, 3, 6; Little Theatre, 1-3; Class Assembly, 4; Social Studies Assembly, 5.

Elaine Skelton, 602

Class Day Chairman, 6; Emblem Circulation Mgr., 5-6; Cui Bono, 3-6; Class Vice President, 3-4; Orchestra, 1-6, President, 3-4; W.A.A. Secretary, 4; Geography Club Treasurer, 3; Y.W.C.A. Interscholastic Council Secretary, 5-6; Social Hour Chairman, 6; Student Council Representative, 5-6; Small "N," 4.

Virginia Smith, C.G.

C. G. Club; Executive-Judiciary Committee; Geography Club.

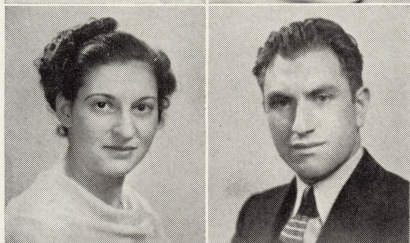


Edna Sonken, 601

Cui Bono, 3-6, President, 6; W.A.A. Treasurer, 3; Section Chairman, 3; Swimming Mgr., 4; Student Advisers Committee, 6; Emblem Photography Staff, 5-6; Fellowship Rose Sale, 3; Class Auditing Chairman, 5-6; Cap and Gown Committee, 6.

Bernice Spain, 602

Prom Invitation and Bids Committee, 6; Geography Club, 1-2; Style Show, 2; Swimming Meet, 3; Social Studies Assembly, 2, 5.

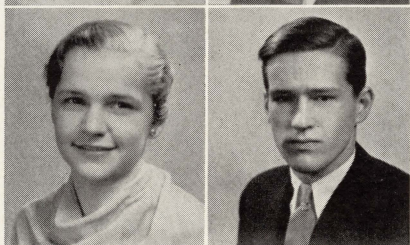


Ethel Steinberg, 603

Class Nominating Committee, 3; Little Theatre, 2-4; Geography Club, 1-4; Y.W.C.A., 3-6; Science Club, 3; Special Choir, 4-6; Archery, 1-2.

Samuel Sudin, C.G.

C. G. Club; Geography Club.



Betty Sundmacher, 601

Student Council President, 4, Representative, 2, 5, 6; Class President, 1-2; Prom Committee, General Chairman, 6; Cui Bono, 4-6; Student Council Constitution Committee, 4; Emblem Club Editor, 5-6; Social Hour Committee, 1; Class Social Committee, 3-4, Chairman, 5-6; Commencement Usher, 1-5.

Joel Walters, 602

Student Council Treasurer, 6; Normalite Staff, 1; Math Club, 2; Sketch Club, 3-4; Emblem Advertising Staff, 6.

Florence Westermeyer, 603

Math Club Secretary, 5; W.A.A. Representative, 1, 3, 4, 5; Book Exchange Committee, 5; Class Song Committee, 5-6; All-Star Captain Ball, 1, 3; All-Star Volley Ball, 2, 4; Swimming Club, 3.

Florence Wiaduck, 602

Cui Bono, 3-6; Class Vice President, 5-6; Emblem Publicity Staff, 5-6; Section Chairman, 5; Executive-Judiciary Committee, 3; Student Advisers Committee, 5; Book Exchange Chairman, 6; Women's Lounge Committee, 4; Fellowship Rose Sale, 4; Commencement Usher, 5.

Olive May Wilhelms, 601

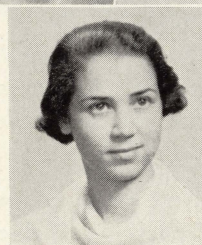
May Queen, 6; Class Secretary, 5-6; Fellowship Treasurer, 6; Section Chairman, 1-4; Pin and Ring Committee, 5-6; Swimming Club, 6.

Olga Yarmoluk, 603

Cui Bono, 3-6, Vice President, 4; Little Theatre, 1-6, Vice President, 5; Section Chairman, 3; Book Exchange Committee, 3; Student Advisers Committee, 5; Geography Club, 1-6; Prom Arrangements Committee, 6; Class Social Committee, 5-6; Social Hour Committee, 3.

Eleanore M. Young, 603

Cui Bono, 3-6; Y.W.C.A., President, 5-6; W.A.A. Treasurer, 2; Class Treasurer, 3-4; Geography Club Secretary, 3; Little Theatre Vice President, 4; Commencement, General Chairman, 5-6; Student Council Social Committee Chairman, 5; Social Hour Committee, 4; Class Social Committee, 5-6; Commencement Usher, 4-5.





*Second Row—G. Graber, F. Manz, L. Hard, V. Spikula, H. McKenna, R. Kaeding, H. Murray.
First Row—M. Marano, E. Weimer, S. Malter, Miss Newlee, F. Waters, B. Schaffer, L. Yoelin.*

Deaf Oral Teacher Training

Training for Deaf Oral work was resumed in September, 1934, because of the shortage of teachers in the Deaf Oral schools in the city. The department had been closed since 1918. During the school year 1934-1935, seven teachers were trained. They were assigned in the fall of 1935 to teach in various deaf oral centers in the Chicago Public schools.

The course is open to teachers holding Elementary school certificates and high in scholastic standing. The candidates are selected by oral and written examinations.

The training consists of courses in "Teaching Speech and Language to Deaf Children," "Teaching Lip Reading," and "The Use of Hearing Aids for Hard of Hearing and Deafened Children." Instructing these courses is Miss Clara E. Newlee, head teacher of the Deaf Oral department of the Parker Practice school, and a teacher of long experience in Deaf Oral education.

Other special courses given by regular members of the Chicago Normal College faculty are "The Mechanics of the Organs of Speech and Hearing," "The Psychology of the Special Child," "Teaching Reading to the Deaf," "The History of the Education of the Deaf," and "Industrial Arts."

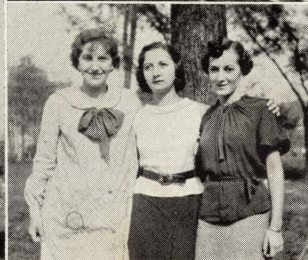
During the present school year, the thirteen students pictured above were enrolled in the class. In addition to their regular work, the group visited many Deaf Oral schools in the city and made a most interesting visit to the Central Institute for the Deaf in St. Louis.

In April, the group was sent to practice; five at Parker Practice school, five at the Jacob Beidler school and three at the Alexander Graham Bell school.

With the closing of the school year in June, 1936, thirteen teachers thoroughly trained in Deaf Oral work were graduated from the Chicago Normal College. The entire class felt very fortunate for having had the opportunity to obtain this training. Helping the aurally handicapped children to take their place in normal life is the aim of the teacher of the deaf, and it is with this aim that they set forth to do their best in their chosen field.

STUDY FOR







TOP PICTURE, SECTION 511:

Third Row—V. Wilson, M. Love, A. Bright, I. Filippi, R. Ryden, D. Johnson, M. McMahon.

Second Row—J. Lombardo, I. Pronger, L. Drury, R. Sniegowski, M. Cohen, G. Terwee, E. Hauser.

First Row—A. McFarland, E. Irmen, H. Doblinsky, D. Roberts, E. Utteg, M. Woodward, M. Stehl.

BOTTOM PICTURE, SECTION 512:

Third Row—H. Taylor, M. Ferguson, E. Ferchoff, H. Dalton, C. Toomey, E. Knoppel, L. Schuman.

Second Row—G. Sowa, M. Nolan, Y. Van Lent, M. Langdell, I. Pozer, L. Daube, M. Harris, R. Loess, L. Turner.

First Row—J. Prendergast, C. Kolar, J. Wallace, H. Tessmer, J. Silverman, E. Switzer, K. Petersen.

Class of February, 1937

OFFICERS

President	Alice McFarland
Vice President	Knute Petersen
Secretary	Genevieve Sowa
Treasurer	Yvonne Van Lent

The forty-niners, as the class of February '37 calls itself, has done a great deal of pioneer work during its career at Normal. The 500s began their freshman year with a triumph of original creative writing ability, "Five Thousand Years From Now," which was staged in a novel and unique manner. "May Time," the first musical production seen at Normal in many years, owed much of its success to the ability of the "forty-niners." Science, a phase of leisure activities often neglected, was brought to the foreground when a club was organized in this field by interested members of the class. The feminine teams of the class have twice achieved championship, while the men have been responsible to a large extent for the victories of the basketball team.

Many officers and leaders in extra-curricular activities have been drawn from the ranks of the forty-nine, including Student Council, the Normalite, Geography Club, Orchestra, the Photography Club and the athletic organizations.

Class of June, 1937

President	Shirley Hassel
Vice President	Rosemary Kingsbury
Secretary	Margaret Bulfin
Treasurer	Mary Keane

Laying much stress on the fact that a good beginning means much toward a successful goal, the present 400 class began their first semester here at Normal by disregarding the "timid freshmen" idea and proceeding at once to win their laurels. First evidence of their rising glory was seen at the Christmas Frolic when they carried off first prize for their costume. Their semester party, held on Hallowe'en, was a great success and established them firmly in the social whirl.

Second semester followed with like success. An interesting "amateur hour" was presented at a regular assembly and elicited many compliments from the school. Once more proving their ingenuity in costume designing, this class again walked off with the prize at the Spring Festival for the best costume. With other such feathers in their caps, the group proceeded to its next semester's activities.

During third semester, members of this class began to establish themselves as prominent Normalites. Mary Agnes O'Neill was elected to the important post of Little Theatre President, Eleanor Gode became President of Special Choir, Marge Bulfin took up her duties as Secretary of Fellowship, and others in the class did their share in helping the wheels of efficiency to move smoothly.

Fourth semester—now upper classmen, but none the worse for their trials and tribulations, the 400s have settled down for a good deal of prominence. Marge White is now Madame President in Little Theatre; Marge Bulfin is President of Fellowship, while Catherine McCollam acts as Vice President; Mary Agnes O'Neill serves in the capacity of Vice President of Student Council, while Marge Buettner holds the important office of Fee Accountant of Student Council. And that's not all, for Marian Maher, as Editor-in-Chief of the Normalite, holds the destinies of the school paper in her hands; May Larson reigns as President of Geography Club with Pearl Grabowsky as Vice President. In the W.A.A., Eleanor Klos holds the office of Vice President and Ingeborg Olson worries over financial matters in that organization. Rosemary Rosania serves as Vice President of the Math Club. It is no wonder that the 400s are slightly "puffed up" about all this prominence!

Our men (we really have eight of them) have not been excluded from the lime-light by their female classmates. Kennedy, Kinny, Vincent and Koscielniak are prominent in the field of athletics, and are members of Normal's famous basketball team, while the rest are outstanding in other fields.

Prominent also in the realm of art, James Kennedy and George Vincent were selected, together with Margaret Taylor, Mary Agnes O'Neill and Greta Tholander, to paint a mural on the walls of Mr. DeBoer's room in the Parker Practice school.

Helpful in all activities are the four advisers of this group, Dr. Branom, Miss Olson, Dr. French and Mr. Turner.

The 400s are well represented in social events, and are much in evidence at Normal's proms and the Friday Social Hours. Their prominence here at Normal has not as yet, however, gone to their heads.—You'll find the 400s nice people to know!

SECTION 421:

Third Row—R. Langer, D. Johnson, M. Davin, H. Burke, M. Keane, M. Taylor, M. Bulfin, C. McNeal.

Second Row—F. McCaskie, H. Walsh, M. Cahill, M. White, L. Strasen, A. Parker, M. McLaughlin, S. Nykiel.

First Row—R. Goldberg, A. Wall, C. Shay, L. Juster, M. Taub, M. Buettner, A. Heale.



SECTION 422:

Third Row—J. Gilbert, E. Christgau, G. Vincent, J. Kennedy, E. Koscielniak, B. Sebald, J. Kinney, H. Gross.

Second Row—L. Helman, M. Mele, G. Tholander, I. Weiner, M. Burba, E. Miller, L. Thoren.

First Row—K. Kurz, A. Spina, D. Keefer, M. O'Neill, R. Pearson, J. O'Dowd, M. Dieck.



SECTION 423:

Third Row—J. House, I. Olson, M. Richards, R. Kingsbury, S. Hassel, S. Ross.

Second Row—E. Klos, M. Stevens, E. Soderstrom, F. Fiscella, E. Best, H. Damick, V. Lorek, E. Bretsnyder.

First Row—M. Hampton, G. Broyles, C. Coady, R. Rosania, C. McCollam, L. Tomic, M. Maher.



SECTION Kg4:

Third Row—B. Nayder, I. Hill, P. Grabowsky, E. Gode, M. Larson, M. Watgen, D. Loescher.

Second Row—E. Fitz Roy, M. Burke, I. McDonnell, E. Law, J. Van Dam, D. Shulman, E. Reid, L. Hills, R. Vander Mey.

First Row—L. Lennon, J. Sanderson, H. Wedertz, M. Claffey, B. Kramer, C. LeBosquet, M. Roche.





TOP PICTURE, SECTIONS 331 AND Kg3:

Third Row—D. Satek, B. Jenson, E. Begley, E. Mielke, I. Howard, S. Bracht, C. Doherty, E. Spikula, M. German, G. Sullivan.

Second Row—M. Kelley, L. Gaines, S. Ginsburg, M. Rohwer, E. Goldstein, R. Romme, C. Price, E. Roche, S. Karlson, M. Schmitz.

First Row—E. James, D. Westburg, A. Byrne, M. Tierney, R. Morrow, T. Friedman, B. Artings-tall, M. Ross.

BOTTOM PICTURE, SECTION 332:

Third Row—R. Weiner, C. Jespersen, I. Fitz, A. Egan, G. Gibbs, M. Manthey, L. Brett, L. Reg-nell, F. Green, S. Larsen.

Second Row—L. Sullivan, A. Gargione, E. McBroom, M. Robert, J. Wall, I. Viall, E. Walsh, D. Roche, L. Bishop, G. Silverzwieg, J. Koziol.

First Row—N. Jeanson, W. Norman, S. Glickman, C. Bechel, A. Hitchcock, R. Cannon, M. Toomey.

Class of February, 1938

President.....	La Verne Brett
Vice President.....	Nancy Jeanson
Secretary	Marian Schmitz
Treasurer	Leah Bishop

In all fields of activity do the 300s participate! We even feel we have reached a height of great mental capacity, a height which only Charles Bechel could jump, just as he did at the meet at the University of Chicago.

If we should take an imaginary trip through the world of adventure, we would be efficiently guided by Lorraine Sullivan, vice president of the Geography Club, and Irene Howard, treasurer.

Nearing Italian shores, we might hear beautiful choral music directed by Anne Gargione, treasurer of Special Choir. In the lovely scenery, we would find striking resemblance to pictures painted by Mable Ross in Miss Hutchison's class.

In England, we would dress up in our evening clothes to see a great play with Sidney Glickman as the hero. What a grand time we would have finding famous members of our class all over the world!



TOP PICTURE, SECTIONS 241 AND 242:

Fifth Row—B. Buerekholtz, M. Murnane, M. Crear, J. Landmeier, B. Ortel, L. Cook, J. Skolozynski.
Fourth Row—A. Spina, O. Glasow, L. Austin, M. Schular, W. Truszkowski, P. Glenister, R. Zimmerman.
Third Row—H. Trainer, P. Myron, M. Jencks, J. Morrison, J. Lansky, J. Fiscella, H. Ruckam, P. Joseph, S. Mendel.
Second Row—L. Macku, R. Dorsey, L. De Voe, J. Gormley, G. Houser, E. McElligott, M. Brennan, M. Kennelly, B. Blum, E. Joyce.
First Row—F. Dolinsky, I. Miller, A. McGowan, M. Clancy, E. Gilbo, M. Garvey, D. Calcott, J. Kiss, E. Sheridan.

BOTTOM PICTURE, SECTIONS 243 AND 244:

Fifth Row—M. Withrow, L. Michaels, T. Lenoff, A. Schiff, H. Lorr, R. Van Den Bosch, M. Erdmann.
Fourth Row—L. Engelhardt, M. O'Connor, L. Greensley, P. Sauer, E. Parker, L. Jacobson, D. Tepper, F. Lawrence, J. Prouty.
Third Row—A. Rubin, R. Solomon, D. Rieck, E. Sheehy, M. Grych, H. Ketola, L. Neubauer, N. Denker, D. Carrigan, J. Hausheer, H. Augustiny.
Second Row—R. Byles, J. Thompson, A. O'Donnell, H. Costin, M. Dalton, L. Baldry, N. Anderson, F. Caraher, M. Quirk, E. Hunter.
First Row—R. Horn, G. Reynolds, R. Vanderpoel, E. Dunn, E. Lembach, L. Wilson, L. Daniel, E. Schwartz, J. Griffin.

Class of June, 1938

President	Margaret Murnane
Vice President	Mary Brennan
Secretary	Ruth Vanderpoel
Treasurer	Margaret Dalton

The class of June, '38, triumphant after the entrance examinations last September, became a part of the student body of the Chicago Normal College and formally adopted a "professional attitude." After another bevy of examinations, classes began; with them came problems of social adjustment—new acquaintances to make, long "L" rides—and three flights of stairs! Overcoming their handicaps, the freshmen strode bravely forward. With Mr. Brye as adviser, a constitution was drawn up, and in December class officers were elected.

To help administrative problems, the cabinet selected members for various committees: social, entertainment, publicity, and accounting.

Socially, the freshmen were quite active about the campus, joining a majority of the clubs and attending the teas "en masse."



TOP PICTURE, SECTION 151:

Second Row—E. Johnson, W. Walther, L. Olsen, D. Idarius, J. Bild, J. Nystrom, L. Sterling.
First Row—A. McDonnell, L. Purcell, J. Wiener, S. Quisenberry, L. Trcka, J. Stephens, J. Kimmel, I. Dill.

MIDDLE PICTURE, SECTION 152:

Third Row—I. Silberg, W. Rohatynski, W. Pond, E. O'Malley, M. Jehn, P. Bryson.
Second Row—F. Goldberg, M. McHugh, M. Clifford, E. Maloney, M. Sperling, E. Olson, P. Purgatorio.
First Row—A. Malkin, J. Korecki, D. Meyers, M. Lengsfeld, J. La Giglia, J. Klemptner.

BOTTOM PICTURE, SECTION 153:

Third Row—R. Okner, M. Beach, V. Ahern, H. Kozimor, M. McElherne.
Second Row—J. Smith, M. Harding, E. Kohler, S. Chytry, R. Lipschultz, E. Groner.
First Row—R. Tamney, W. Krupa, M. Doyle, E. Leishin, E. Nugent, V. Lerner.

Class of February, 1939

Looking over this year's array of freshies, we have become aware of the fact that they are not a group of shy, shrinking violets. Quite the opposite seems to be true of the 100s. Lillian Trcka, Marion Clifford and Helen Kozimor are three of the All-Star Volley Ball team, while the star swimmer of this class is Antreen McDonald, who won the crawl event in the recent Inter-Collegiate swimming meet.

Not only does the class possess outstanding athletes but they shine in other fields, too, evidenced by the voices of Emmet O'Malley and Dolores Meyers. Laura Olson's ability as a pianist, Janice Nystrom's sketching, and June Bild's dancing are only a few of the accomplishments of the group. There seems to be a bright future in store for them.



TOP PICTURE:

Third Row—I. Rederer, G. Ferson, P. Quinn, J. O'Hearn, A. O'Hearn, F. Thomson, M. Dzuibaniuk, C. Breneman, S. Sudin, G. Birtman.

Second Row—E. Przybylo, V. Smith, R. De Boer, K. O'Connor, C. Smith, E. Hartigan, E. Gilmore, A. Gregg, E. Boyle, K. Hogan, J. Viehoff.

First Row—A. Murphy, H. Fitzgerald, C. O'Gorman, M. Collins, Miss Camenisch, G. Collins, H. Lynn, R. Arden, F. O'Malley.

BOTTOM PICTURE:

Third Row—R. Podlesak, R. Evans, A. Beatty, S. Rezabek, E. Liston, J. O'Brien, R. Cardwell, C. Saulter, S. Rapoport.

Second Row—R. O'Brien, D. Jenkins, M. Puckett, E. Clemmons, R. Goldberg, G. Jones, N. Golden, G. O'Malley, N. Gallagher, D. Stewart.

First Row—M. Walsh, E. Poole, M. Molloy, R. McDonald, Miss Freeman, I. Flora, J. Smith, H. Williams.

Our College Graduates

September to February	February to June
Frank Thomson	Ashley Beatty
Chester Breneman	Stanley Rezabek
Fuller O'Malley	Cloyd Swem
Aldan O'Hearn	Annette Murphy
Daniel Sullivan	John O'Brien
Student Council Representative	

Among the inhabitants of Normal, there is a distinctive group formerly known as U.T.s, (University Transfers), but now called by the dignified title of C.G.s (College Graduates). These individuals have come to Normal from many places of learning, but all with the same motive—to complete training necessary for an Elementary teacher's certificate.

The course for the C.G.s is two years in length, but it may be shortened by credits for University work, or by summer school sessions.

The advisers of the group have been very helpful in organization and program planning. Acting in this capacity are Miss Camenisch, Miss Freeman, Dr. Geyer, and Mr. Hatfield.



ACTIVITIES





Cummings
Gilbert
Rosen
Stein
Walters

Turner
Jacobsen
Fosse
Horrocks
Lee

Swearingen
Sexauer
Bencur
Cowell
McGrath

Turk
Cleary
Liszt
Caddick
Knaizer

Hatfield
Wiaduck
Zerega
Young
Davis

Rades
Kennedy
Erickson
Sonken
Wise

Emblem Staff

ART STAFF

Mally Gilbert
Lillian Bencur
Dorothy Horrocks
Irene Liszt

PHOTOGRAPHY STAFF

Leona Stein
Edna Sonken
Eleanore M. Young

FACULTY ADVISERS

Mr. James I. Swearingen
Miss Alta Turk
Mr. W. Wilbur Hatfield
Mr. Elmer Morrow

ASSISTANT BUSINESS MGR.

Carol Wise

SPORTS STAFF

Ada Sexauer
Robert Cleary

FEATURE STAFF

Mary B. Cummings
Sarajane Caddick
Betty Cowell

ADVERTISING STAFF

June Rades
Harriet Jacobsen
Jacob Knaizer
Joel Walters
Rose Davis

SENIOR WRITE-UPS

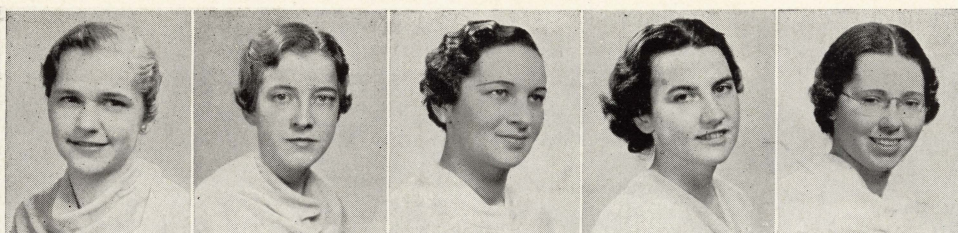
Ruth Erickson
Rachel Rosen
Elizabeth Fosse
Columba Zerega

PUBLICITY STAFF

Florence Wiaduck
Clarice Lee

ASST. CIRCULATION MGR.

Josephine McGrath



Betty
Sundmacher

Elaine
Skelton

Evelyn
Glazer

Alice
McCarthy

Eugenia
Shea

Emblem Staff

Editor-in-Chief	Evelyn Glazer
Associate Editor	Alice McCarthy
Business Manager	Eugenia Shea
Circulation Manager	Elaine Skelton
Club Editor	Betty Sundmacher
General Assistant	Lawrence Turner

"The Emblem is out!" What sweet words these are, greeting the ears of a tired but happy staff. "The Emblem is out!" It sounds so simple, it is so easy to say, yet how much worry and work and time and energy it took on the part of a crew of seniors to make it a certainty that the class of 1936 would have a yearbook.

For many years, it was the accepted thing for Normal to publish an Annual each June. However, as classes grew smaller, and funds grew lower, Emblems became few and far between. The last one published was in 1934; it was a product of the joint efforts of the February and June classes of that year.

In November, 1935, the seniors decided to attempt the publication of an Emblem. Accordingly, a committee from each class was selected to work with the faculty advisers on the organization of the staff and planning of the book. It was a difficult job at best. The inexperience of the graduating class in regard to publications; the small size of Normal's student body; the difficulty of raising funds—these were only a few of the situations that had to be met. However, before long a staff was selected, with Evelyn Glazer as editor and Alice McCarthy as assistant. An able group of seniors was chosen to comprise the rest of the staff, and work was begun in earnest.

Under the guidance of a faculty group of whom Mr. Swearingen was chairman, the staff soon had things running smoothly. Publicity, circulation, and advertising were begun. Photographer, engraver, and printer were selected; a cover was decided upon. Senior pictures were taken; groups were photographed. Financial difficulties were met. The body of the book was written, approved, and printed. Finally the Emblem was set up in its entirety; at last it was complete!

Thus, starting with nothing but a spirit of ambition and eagerness to learn, the senior class managed to overcome the difficulties that beset it at the beginning of the year. However, it was only through cooperation within the staff, between staff and student body, and between staff and faculty that publication was at all possible.



TOP PICTURE. STUDENT COUNCIL REPRESENTATIVES:

Third Row—E. Skelton, M. Schmitz, C. Toomey, H. Burke, C. O'Gorman, C. Doherty, E. Lembach.
Second Row—F. Goldberg, B. Sundmacher, I. Viall, H. Tessmer, L. Austin, Y. Van Lent, J. Kimmel, G. Sowa.

First Row—H. Dalton, M. O'Neill, J. Walters, Miss Olson, Dr. Branom, Mrs. Muller, L. Baitel, M. Buettner.

BOTTOM PICTURE. STUDENT COUNCIL COMMITTEE CHAIRMEN:

Standing—E. Skelton, C. McCollam, M. Taylor, H. Walsh, B. Sebald, A. Monaco.

Seated—E. Young, F. Wiaduck, C. Toomey, E. Knoppel, M. O'Neill.

Student Council

September to February

SOCIAL COMMITTEE:

Eleanore M. Young, *Chairman*
 Margaret Bulfin
 Eugene Christgau
 Lucille Daube
 Jerome Gilbert
 Sidney Glickman
 Henry Gross
 Virginia Henaghan
 Nancy Jeanson
 James Kennedy
 Charles Kolar
 Elaine Mielke

PUBLICITY COMMITTEE:

Lillian Anderson, *Chairman*
 Alyss De Marais
 Alice Heale
 Ruth Kennedy
 Clarice Lee
 Margaret Taylor

SOCIAL HOUR COMMITTEE:

Elaine Skelton, *Chairman*
 Alvah Armstrong
 Ashley Beatty
 Margaret Bulfin
 Eugene Christgau
 August Flugel
 Jerome Gilbert
 Ogden Glasow
 Paul Glenister
 Henry Gross
 Fred Gunderman
 John Kinney
 Marguerite Klein
 Edith Lembach
 Mary Leyden
 Elaine Mielke
 Knute Peterson
 Edward Quinn
 Muriel Robert
 Dale Satek
 Rose Ann Schatzman
 Constance Shay
 Julius Silverman
 Genevieve Sowa
 Henry Tessmer
 Judith Thompson
 William Truskowski

STUDENT ADVISERS COMMITTEE:

Catherine McCollam, *Chairman*
 Kathryn Bonfield
 Evelyn Glazer
 Pearl Grabowsky
 Harry Krupsky
 Paul Quinn
 Edna Sonken

STUDENT SERVICE COMMITTEE:

Mamie Zaretsky, *Chairman*
 Alvah Armstrong
 Pearl Grabowsky
 Paul Quinn
 Dorothy Roberts
 Dale Satek
 Margaret White

HALL DUTY COMMITTEE

Rose Davis, *Chairman*
 Elinor Elisberg
 Elizabeth Fosse
 Marie Love
 Ruth Porter
 Henrietta Wedertz

February to June

HALL DUTY COMMITTEE:

Helen Walsh, *Chairman*
 Helen Burke
 Helen Costin
 Evelyn Ferchoff
 Irene Liszt
 Roberta Morrow

PUBLICITY COMMITTEE:

Margaret Taylor, *Chairman*
 Alice Byrne
 Mally Elaine Gilbert
 Eleanor Gode
 Louise Mary Macku
 Mary Kathryn Stevens

AUDITING COMMITTEE:

Burt Sebald, *Chairman*
 Glen Armstrong
 Catherine Toomey

STUDENT ADVISERS COMMITTEE:

Cecelia McGough, *Chairman*
 Marguerite Klein
 Felicia Pacelli
 Eugenia Shea
 Florence Wiaduck
 Olga Yarmoluk

BOOK EXCHANGE COMMITTEE:

Josephine McGrath, *Chairman*
 Irma Filippi
 Roberta Morrow
 Ruth Ryden
 Florence Westermeyer
 Carol Wise

AUDITING COMMITTEE:

Frank Thomson, *Chairman*
 Mildred Joens
 Mary Woodward

STUDENT SERVICE COMMITTEE:

Evelyn Knoppel, *Chairman*
 Robert Cleary
 John O'Brien
 Marshall Dzuibaniuk
 Henrietta Wedertz
 Olive May Wilhelms
 Lorraine Sullivan
 Mary Toomey

BOOK EXCHANGE COMMITTEE:

Florence Wiaduck, *Chairman*
 Lorraine Hills
 Anna Keating
 Frances Reedy
 Rachel Rosen
 Ruth Ryden

PARTY COMMITTEE:

Amalia Monaco, *Chairman*
 Sylvia Bracht
 Irene Fitz
 Eleanor Klos
 May Irene Larson
 Shirley Mendel
 Margaret O'Brien
 Felicia Pacelli
 Lois Schuman
 Reva Solomon
 Mary Louise Taub
 Margaret Withrow



Cummings
Baitel

Toomey
O'Neill

Drury
Dalton

Tessmer
Walters

McFarland
Buettner

Student Council

September to February

February to June

Mary B. Cummings	President	Libuse Baitel
Catherine Toomey	Vice President	Mary Agnes O'Neill
Lenore Drury	Secretary	Helen Dalton
Henry Tessmer	Treasurer	Joel Walters
Alice McFarland	Fee Accountant	Margaret Buettner

The pulse of student organization and activity—The Student Self-Government Association! Organized twelve years ago to voice student opinion and need and to crystallize ideas on self-government, the increasing effectiveness of Student Council has been a matter of growing pride. A medium between faculty and student, its spirit of service and sincerity has won for it a record of staunch achievement. Helping to achieve its goals are the faculty advisers, Mrs. Muller, Miss Robinson, Miss Olson, and Dr. Branom, who have been interested and helpful through many difficulties. The Council proper is composed of the five officers and two representatives from each class.

An important part of Council activities is committee work. The Social Committee, overburdened in the past, has been relieved of other duties and devotes its time to Social Hours alone, while the newly-created Party Committee is responsible for all parties sponsored by Student Council, and assumes charge of High School Day. The Hall Duty Committee promotes quiet and order in the halls; the Student Service Committee works for student comfort by caring for the Women's and Men's Lounges, the washrooms, and the Lost and Found. A boon to bewildered freshmen is the friendly assistance of the Student Advisers Committee, while a benefit to students in general is the work of the Book Exchange Committee. The Auditing Committee, a challenge to future C.P.A.'s, keeps the books in order; and the Committee on Committees oversees the proper functioning and scheduling of all committees.

To mention a few of the achievements of the committees, student comfort comes prominently to mind, for the new radios in the Women's and Men's Lounges is a tangible result. Too, the Men's Lounge, after long months of arbitration, has been moved to new and more comfortable and attractive quarters. The badly tangled cafeteria line has also been straightened out. But perhaps the outstanding work of the Council this semester has been the revision of the Constitution so as to allow a more adequate representation to the student groups in the extension of the franchise.

Chicago Normalite

THE CHICAGO NORMAL COLLEGE, MONDAY, MAY 14, 1936

**Come See
The Famous
Mrs. Fair**



**Normal Make-up
ins NYA Praise
Drama**



**SHERRY HOTEL
TO BE SETTING
FOR JUNE PROM**



**May Queen Rules
Festival; Camera
Click Process**



**Don't Miss
"The Famous
Mrs. Fair"**



















Normalite Staff

September to February		February to June	
Mary O'Connor Hagstrom	Editor-in-Chief	Marian Maher	
Evelyn Glazer	News Editor	Mary K. Stevens	
Eleanor Irmen	Feature Editor	Shirley Hassel	
Marian Maher	Club Editor	Lorraine Sullivan	
Robert Cleary	Sports Editor	Marie Love	
Eugenia Shea	Business Manager	Eugenia Shea	

Faculty Advisers: Miss Alta Turk, Dr. John T. Johnson.



TOP PICTURE:

Third Row—F. Pacelli, M. Stehl, M. Buettner, M. White, E. Utteg, L. Regnell, P. Myron, R. Langer, L. Drury.

Middle Row—E. Scharbach, L. Turner, R. Cleary, E. Skelton, L. Juster, M. Kennelly, B. Blum, L. Gaines, M. O'Neill, A. Flugel, J. O'Brien.

First Row—E. Glazer, E. Irmen, M. Love, M. Stevens, M. Maher, S. Hassel, Miss Turk, L. Sullivan, G. Sowa.

BOTTOM PICTURE:

Second Row—M. Robert, R. Morrow, G. Gibbs, H. Burke, M. Larson, P. Grabowsky, J. Nystrom, L. Sterling.

First Row—M. Clifford, P. Purgatorio, C. Jespersen, M. Schmitz, E. Walsh, A. Monaco, J. Bild.

Normalite

Why do students who frequently complain about homework go out of their way to do extra optional work? There must be strong magnetic power in some outside activities! Such is the case of the people on the *Normalite* staff. Their work is entirely extra-curricular; they receive little or no credit. Yet in spite of everything, nearly one hundred students furiously rack their brains every two weeks tossing off stories of school activities.

A test of any school paper is to be found in its faithful reproduction of the atmosphere of the school. The *Normalite* presents a typical cross-section of Normal College life. The varied sports, and the bustling club activity characteristic of the college are treated on third and fourth pages. The feature page provides an outlet for the creative instincts of talented students, as well as humor for the lighter moments and editorials for the sober. First page "scoops" the latest news of educational and school activities.

Each page of the *Normalite* is in charge of an editor who is responsible for that particular page. The Business Manager, Exchange Editor and Advertising Managers perform obvious and indispensable services, while the Editor-in-Chief supervises all activity. The literary sponsor, Miss Alta Turk, and the financial adviser, Dr. John Johnson, assist and cooperate with the staff in many ways.



TOP PICTURE, FELLOWSHIP REPRESENTATIVES:

Second Row—R. Ryden, G. Sullivan, M. Collins, V. Ahern, M. Burba, J. Thompson, D. Hurney, E. Johnson, M. Langdell, A. Monaco.

First Row—L. Macku, E. Lembach, M. Robert, H. Walsh, Miss Robinson, B. Blum, E. Reid, E. Soderstrom, D. Meyers.

BOTTOM PICTURE, FELLOWSHIP OFFICERS:

Standing—E. Fosse, C. McCollam, C. Toomey, O. Wilhelms.

Seated—E. Shea, Miss Robinson, M. Bulfin, R. Ryden.

Fellowship

September to February

February to June

Elizabeth Fosse	President	Margaret Bulfin
Eugenia Shea	Vice President	Olive May Wilhelms
Margaret Bulfin	Secretary	Catherine Toomey
Ruth Ryden	Treasurer	Catherine McCollam

What is Fellowship? Why, it's one of the most important clubs in school and one to which every student automatically becomes a member upon entering Normal. The functions of Fellowship are many. It aids several schools in the district, maintaining lunch funds at the Hedges and the Sherwood Schools and a milk and lunch fund at the Hamline School.

Baskets are distributed to the needy at Thanksgiving time. At Christmas, Fellowship furnishes several trees, which are placed in the front forridor of the college building about a week before the holiday. When no longer needed for school purposes, the trees are given to neighborhood children who would otherwise not have them.

Miss Robinson, Miss Peickert, and Mr. Eilert, advisers, lend invaluable aid to the organization.



TOP PICTURE:

Third Row—E. Klos, M. Simpson, R. Rosen, O. Williams, D. Horrocks, M. Clinch, K. Bonfield, M. Leyden, M. Taub, A. Heale, B. Sundmacher, M. Klein, F. Pacelli.
Second Row—G. Armstrong, R. Schatzman, L. Tomic, F. Wiaduck, L. Baitel, H. Burke, M. Richards, G. Gibbs, E. Mielke, H. Walsh, M. Lynch, M. O'Neill, A. Flugel.
First Row—A. Keating, Margaret White, M. McLaughlin, H. Dalton, Miss Hallinan, E. Sonken, M. Langdell, M. Buettner, E. Glazer, E. Skelton.

BOTTOM PICTURE:

Third Row—C. Jespersen, M. Stehl, I. Pozer, S. Glickman, P. Quinn, H. Tessmer, J. Gilbert, C. Kolar, K. Petersen, T. Friedman, Y. Van Lent.
Second Row—M. Stevens, M. Cohen, R. Ryden, L. Drury, H. Doblinsky, E. Miller, H. Taylor, E. Spikula, M. Bulfin, B. Jensen, S. Larsen, I. Fitz, D. Westberg, L. Bishop.
First Row—C. McCollam, E. Hauser, L. Thoren, J. O'Dowd, E. Ferchoff, J. Silverman, E. Knoppel, E. Law, A. Gargione, G. Sowa.

Cui Bono

September to February	February to June
Julius Silverman.....	President..... Edna Sonken
Evelyn Ferchoff.....	Vice President..... Minnie Langdell
Cecilia McGough.....	Secretary-Treasurer..... Helen Dalton

Cui Bono, founded in 1908 by Myron Ashley, a former Normal College instructor, approximates other college honor societies, and has achieved the added distinction of being the oldest organization in the school.

The original purpose of the club was to keep abreast of current developments in the then comparatively new field of psychology. It has adhered in the main to this basic principle. At present it is the policy of Cui Bono to select a major topic for study each semester.

Membership in Cui Bono is limited. Candidates are recommended by a faculty member and are admitted only after official acceptance. Of course, they must also be interested in psychology.

A good deal of the group's recent success is accounted for by the coöperation and guidance of its sponsor, Miss Marie Hallinan.



TOP PICTURE:

Fourth Row—E. Leishin, P. Purgatorio, E. Kohler, M. O'Connor, M. McHugh, M. Robert, B. Buerckholtz, R. Tamney, M. Ward.

Third Row—M. Clifford, J. Nystrom, I. Viall, L. Bishop, E. Walsh, N. Denker, D. Tepper, V. Ahern, M. McElherne.

Second Row—V. McCallister, E. Maloney, C. Swem, A. Beatty, L. Austin, L. Turner, O. Glasow, M. Brennan, E. Sheehy.

First Row—M. Doyle, V. Lerner, K. Carter, E. Lembach, Dr. Branom, E. Skelton, E. Glazer, J. La Giglia, M. Clancy.

BOTTOM PICTURE:

Fourth Row—L. Gaines, D. Roche, R. Morrow, I. Howard, E. Mielke, E. James, C. Doherty, C. Jespersen, I. McDonnell.

Third Row—E. Bretsnyder, M. Hoyne, R. Vander Mey, L. Regnell, I. Fitz, L. Strasen, E. Reid, K. Kurz, I. Hill.

Second Row—M. German, A. Harms, M. Roche, G. Gibbs, M. Richards, E. Gode, M. Keane, R. Kingsbury, M. Toomey, F. Green.

First Row—M. Rohwer, E. Roche, R. Romme, M. Larson, L. Sullivan, M. Schmitz, E. Law, L. Daniel.

Geography Club

September to February

February to June

Marie Love	President	May Larson
Eleanor Gode	Vice President	Lorraine Sullivan
Helen Dalton	Secretary	Ferne Fiscella
Roberta Morrow	Treasurer	Irene Howard

"Three cheers for Geography,
Best club of C.N.C."

So runs the first phrase of the Geography Club song, and so the members of the Geography Club assert. The bi-monthly meetings are of a geographical nature, and are always interesting as well as entertaining.

The semester party is the biggest social event of the Geography Club, and while all C.N.C. students are welcome at all meetings during the semester, only the members are eligible to attend the party. Dr. Fred Branom is the sponsor of the club which, at present, is the largest organization at the school.



TOP PICTURE:

Fourth Row—R. Van Den Bosch, H. Ruckam, G. Reynolds, P. Myron, J. Fiscella, B. Blum, R. Zimmerman, M. Jencks.

Third Row—M. Turner, J. Gowan, D. Rieck, M. Kennelly, M. Beck, E. Hunter, J. Gormley, L. Cook, R. Byles, G. Mudd.

Second Row—A. O'Donnell, H. Costin, L. Neubauer, J. Landmeier, F. Caraher, M. Kuchar, J. Thompson, G. Houser.

First Row—J. Kiss, E. Sheridan, R. Dorsey, F. Lawrence, L. Engelhardt, E. Joyce, A. McGowan, J. Lansky.

MIDDLE PICTURE:

Fourth Row—M. Ferguson, R. Rosen, E. Irmien, H. Doblinsky, E. Utteg, C. O'Gorman, K. Bonfield, D. Johnson, A. Monaco.

Third Row—I. Pozer, M. Lynch, F. Pacelli, H. Williams, G. Birtman, F. Wiaduck, M. O'Brien, C. Smith, E. Gilmore, M. Woodward.

Second Row—E. Liston, A. Flugel, R. Evans, E. Boyles, M. Gilbert, L. Baitel, G. Roy, I. Liszt, A. Gregg, M. Collins, S. Rezabek, J. O'Brien, S. Sudin.

First Row—A. Keating, F. Reedy, M. Clinch, M. Newlands, B. Spain, R. Schatzman, R. Dushek, L. Rice, G. Collins, H. Lynn, M. Puckett.

BOTTOM PICTURE:

Fourth Row—R. Langer, I. Filippi, M. Nolan, A. Wall, M. Taub, H. Walsh, M. McLaughlin, R. Goldberg, A. Parker.

Third Row—M. O'Neill, F. Miller, L. Helman, C. Toomey, R. Ryden, Y. Van Lent, M. Stehl, L. Drury, G. Terwee, H. Dalton, M. Hampton, M. Love.

Second Row—L. Lennon, A. Heale, G. Broyles, M. Taylor, M. Maher, M. Burba, P. Grabowsky, H. Burke, I. Olson, S. Hassel, C. Coady, C. McCollam, E. Soderstrom, F. McCaskie.

First Row—D. Keefer, M. Stevens, E. Hauser, J. Lombardo, V. Wilson, M. McMahon, F. Fiscella, R. Rosania, L. Hills.



TOP PICTURE:

Fourth Row—K. Kurz, M. Doyle, B. Blum, M. Newlands, R. Dushek, B. Spain, I. Pozer, S. Chytry, A. Spina, E. Leishin, V. Lerner, P. Myron, M. Dieck.

Third Row—D. Calcott, M. Maher, S. Hassel, M. Hanson, R. Okner, G. Houser, J. Thompson, W. Krupa, L. Rice, M. Beck, M. Ward, G. Collins.

Second Row—R. McDade, M. Kennelly, H. Costin, M. Lynch, I. Liszt, M. Richards, F. Caraher, C. Smith, E. Gilmore, M. McElherne, M. Collins, C. O'Gorman.

First Row—E. Soderstrom, C. McCollam, M. Stevens, Mrs. Ida Stannard, M. White, M. Burba, H. Lynn, E. Sheridan, J. Kiss.

BOTTOM PICTURE:

Fourth Row—M. Taylor, M. Ferguson, M. Taub, A. Heale, S. Ross, B. Ortel, E. Dobrath, L. Helman, F. McCaskie.

Third Row—M. Leyden, M. O'Connor, J. Hausheer, C. Jespersen, M. McHugh, L. Daniel, D. Rieck, I. Fitz, E. Sheehy, F. Lawrence, G. Reynolds, M. McLaughlin.

Second Row—M. Clifford, N. Denker, M. Quirk, L. Baitel, L. Neubauer, M. Gilbert, J. Nystrom, I. Viall, K. Bonfield, R. Dorsey.

First Row—E. Reid, F. Pacelli, M. Erdmann, A. Monaco, M. O'Neill, M. Buettner, L. Sullivan, P. Grabowsky, R. Van Den Bosch.

Little Theatre

September to February

February to June

Mary Agnes O'Neill	President	Margaret White
Olga Yarmoluk	Vice President	Mary Burba
Margaret Buettner	Secretary	Margaret Buettner
Mary K. Stevens	Treasurer	Mary K. Stevens

"All the world's a stage, and all the men and women merely players"—but Little Theatre doesn't merely have players. Make-up, stage craft, costume, business, and art groups also form nuclei around which Little Theatre centers.

One large production is given in the Spring, however, for which all members may try out. This year "The Famous Mrs. Fair," an interesting drama with a plot drawn from hectic post-war days, was presented May 28 and 29.

Acting as faculty adviser this year is Mrs. Ina Stannard, who has been taking the place of Miss Louise Jacobs, regular sponsor of Little Theatre now on a Sabbatical leave.



ORCHESTRA:

Third Row—G. Reynolds, E. Maloney, L. Austin, M. Brennan, D. Roberts.

Second Row—M. Schmitz, C. Krupsky, M. Schular, C. Kolar, E. Quinn, E. Mielke.

First Row—L. Macku, M. Clancy, L. Bencur, H. Damick, Miss Peickert, E. Skelton, E. Law, A. McGowan, G. Hauser.

SPECIAL CHOIR:

Third Row—R. McDade, E. Roche, S. Ginsburg, D. Meyers, M. Sperling, D. Jenkins, M. Beck, L. Regnell, J. Skolozynski, E. Parker, J. Prouty, L. Leonard, S. Mendel.

Second Row—N. Jeanson, I. Hill, L. Olsen, L. Brett, M. Larson, P. Grabowsky, N. Anderson, M. Toomey, R. Morrow, L. Bishop, E. Walsh, E. McBroom.

First Row—E. Glazer, J. La Giglia, J. Korecki, J. Wiener, M. Burke, Miss Taheny, R. Weiner, E. Best, D. Shulman, S. Quisenberry.

SPECIAL CHOIR:

Third Row—R. Vander Mey, T. Friedman, D. Westberg, I. Fitz, S. Bracht, F. Green, E. James, B. Artlingstall, M. Crear, J. Lansky, C. Doherty.

Second Row—A. Gargione, M. Simpson, J. Viehoff, D. Satek, E. Begley, E. Gode, B. Jensen, G. Gibbs, E. Spikula, M. Langdell.

First Row—S. Karlson, J. Koziol, F. Fiscella, A. Parker, E. Dunn, J. Fiscella, H. Williams, G. Birtman, E. Klos.

The Orchestra

September to February	February to June
Channon H. Krupsky.....	Hilda Damick
Dorothy Roberts.....	Gene Hauser
President.....	Secretary-Treasurer.....

An important representative of Normal's music accomplishments is the school orchestra, directed by Miss Frances Peickert. Performing at assemblies and playing at Commencement exercises, as well as at other school functions, provide means of sharing orchestral music with the rest of the Normal College.

Special Choir

September to February	February to June
Eleanor Gode.....	Eleanor Klos
Evelyn Glazer.....	Pearl Grabowsky
Henrietta Wedertz.....	Anne Gargione
President.....	Vice President.....
Secretary-Treasurer.....	

The membership of Special Choir is composed entirely of girls who enjoy singing. They often supply musical numbers for school programs; however, the culmination of activities is the annual Christmas Program. The entire group appreciates the untiring efforts of Miss Catherine Taheny, who is carrying on the work so well begun by her predecessor, Miss Alice L. Garthe.



TOP PICTURE, SPANISH CLUB:

Third Row—A. Monaco, M. Love, E. Soderstrom, A. Wall, R. Langer, L. Daniel, R. Schatzman, G. Terwee, E. Parker, H. Damick.

Second Row—P. Glenister, M. Hampton, M. McLaughlin, H. Walsh, E. Hunter, D. Hurney, L. Baitel, C. Gibbs, M. Woodward, M. Lynch, L. Rice, R. Cardwell.

First Row—J. La Giglia, R. Rosania, E. Hauser, M. White, P. Quinn, Dr. French, M. Newlands, B. Spain, L. Gaines, F. Pacelli.

BOTTOM PICTURE, MATH CLUB:

Fourth Row—M. Manthey, I. Rederer, M. Puckett, G. Sullivan, A. Egan, M. O'Brien, A. Gregg, E. Clemmons, R. Langer, R. Goldberg, G. Collins, L. Tomic.

Third Row—M. Kelly, I. Viall, F. Westermeyer, L. Baitel, M. Gilbert, C. O'Gorman, C. Smith, E. Gilmore, M. Clifford, D. Stewart, A. Wall.

Second Row—C. Swem, R. Podlesak, R. Evans, P. Quinn, E. Liston, S. Rezahek, J. O'Brien, S. Rapoport, M. Berwen, A. Beatty.

First Row—M. Robert, G. Birtman, L. Hills, R. Rosania, Dr. Johnson, J. Smith, H. Lynn, M. Collins, R. Arden.

Spanish Club

September to February

February to June

Paul Quinn President Jeanette La Giglia

. Vice President Evangeline Parker

Evelyn Hauser Secretary-Treasurer Paul Glenister

La Sociedad Madrugada, Normal's first Spanish club, was organized in the fall of 1935. Miss Louise Jacobs and Dr. Beals French have acted as faculty sponsors.

This group makes only two requirements of its membership applicants: a desire to study a foreign language and ability to attend the club meetings on Wednesday and Friday mornings at 8 o'clock.

September to February

Math Club

February to June

Daniel Sullivan President Stanley Rezebek

Frank Thomson First Vice President Catherine O'Gorman

Libuse Baitel Second Vice President Rosemary Rosania

Florence Westermeyer Secretary-Treasurer Marion Clifford

Normal's Math Club, sponsored by Dr. John T. Johnson, has proved invaluable as an outlet for mathematically-minded people. Discussions about various phases of math; discovering the recreations in mathematics; gaining ideas on organizing math clubs—such are some of the aims and purposes of the Math Club.



TOP PICTURE, SCIENCE CLUB:

Fourth Row—C. Swem, L. Sullivan, M. Rohwer, R. Dorsey, E. Best, M. Beck, R. Weiner, M. Nolan, E. Hauser, J. Lombardo.

Third Row—A. Wall, M. Taub, A. Parker, A. Heale, E. McBroom, I. Filippi, H. Doblinsky, D. Johnson, D. Roche, M. Taylor, Y. Van Lent, C. Kolar.

Second Row—A. Beatty, M. Kennelly, L. Regnell, M. Stehl, M. Woodward, A. McFarland, H. Taylor, A. Gregg, C. Toomey, R. Ryden, E. Miller, E. Ferchoff, L. Turner.

First Row—B. Blum, M. Toomey, G. Sowa, H. Tessmer, Dr. Whitten, M. Love, M. German, P. Myron, G. Birtman

BOTTOM PICTURE, KG.—PRIMARY CLUB:

Third Row—B. Kramer, E. FitzRoy, R. Vander Mey, M. Larson, P. Grabowsky, E. Gode, D. Loescher, C. Le Bosquet, M. Watgen.

Second Row—B. Snyder, E. Reid, I. Hill, M. Ross, Miss Olson, Miss Willy, M. Roche, E. Law, C. Price.

First Row—D. Shulman, J. Sanderson, I. McDonnell, L. Hill, M. Hoyne, M. Rohwer, L. Lennon, M. Burke, J. Van Dam.

September to February	Science Club	February to June
Henry Tessmer	President	Marie Love
Alvah Armstrong	Vice President	Marjorie German
Yvonne Van Lent	Secretary	Genevieve Sowa
Joanna Lombardo	Treasurer	Mary Toomey

During its two years of organization, the Science Club has become well established among the other clubs of the school. Sponsored by Dr. Whitten, the club became prominent by its success in having Dr. Beauchamp of the University of Chicago as its guest speaker at a school assembly. Other addresses have been given by Dr. Jerome Fisher of the University of Chicago; Dr. Sherff, Dr. Smith, Dr. French and Mrs. Phipps.

Kindergarten-Primary Club

September to February	Kindergarten-Primary Club	February to June
Evelyn Fitz Roy	President	Marion Hoyne
Lorraine Hills	Vice President	Eleanor Gode
Charlotte Le Bosquet	Secretary	Charlotte Price
Doris Loescher	Treasurer	Irene Hill

Members of this club are students of the Kindergarten-Primary (famous "Kg.") department. The group, which is sponsored by Miss Dorothy Willy and Miss Ellen Olson, meets once every month. Two special events of the year are the Christmas Party and the Spring Tea.



SKETCH CLUB:

Third Row—E. Gilbo, H. Walsh, C. Le Bosquet, G. Tholander, R. Pearson, M. Withrow.
Second Row—R. Schatzman, E. Miller, I. Olson, J. Kennedy, A. Flugel, M. Richards, B. Burba.
First Row—D. Horrocks, M. Taylor, G. Roy, Mr. Geilen, S. Hassel, M. O'Neill, E. Soderstrom.

Sketch Club

Chairman September to June Mary Agnes O'Neill

The Sketch Club is the most informal club at Normal. Each meeting consists of an hour of the pleasant recreation of using pencil or water colors to sketch schoolmates dressed in colorful gypsy costumes, old-fashioned gowns, Japanese kimonos, pretty evening clothes, or new spring suits. Unhampered by rules and officers, the members of this club happily follow their artistic bent under the guidance of Mr. Geilen.

Class Songs

FEBRUARY, 1936

We started together 'way back in thirty-three,
 And went shoulder to shoulder through the years;
 We've forged a chain of friendship about us
 To remain though our parting nears.
 We've laughed away our troubles,
 We've smiled if things looked dark,
 With a song in our hearts we've done our best;
 We've just completed another page
 Of the drama we're acting on life's great stage;
 So we're saying goodbye to our student days,
 As we join hands once more;
 With heads held high we're set to face
 What the future holds in store.

Cecelia McGough and
 Mary B. Cummings

■
 JUNE, 1936

We hail thee, Chicago Normal College,
 The school we love so well,
 We're saying fond farewell;
 For from thee, we learned the art of living,
 The pleasure in the giving, too.

Hail the Normal green and white!
 Symbols of the truth and right!

Here before thee do we stand,
 To spread education throughout the land!

Today we greet you and salute you,
 For now 'tis time to leave you,
 Our loving alma mater;
 We'll be your loyal children always,
 Chicago Normal College!

Music by Marguerite Klein
 Words by Mary Roy

THE LIES



Our Letter Girls



Following the "N":

E. Klos, R. Garrison, A. Sexauer, D. Loescher, C. Le Bosquet, I. Pozer, I. Olson, M. Richards, H. Taylor, A. Parker.



Garrison
Klein

Porter
Klos

McGrath
Mielke

Pozer
Olson

Women's Athletic Association

September to February		February to June
Rosanna Garrison	President	Marguerite Klein
Ruth Porter	Vice President	Eleanor Klos
Josephine McGrath	Secretary	Elaine Mielke
Isabelle Pozer	Treasurer	Ingeborg Olson

Physical training as well as mental is necessary for the rounding out of a rich life; "health first" is a primary objective in education. The W.A.A. has always promoted interest in athletics for every girl at Normal.

Some of the activities which are carried on within the school are the Tennis Tournament, which this year, for the first time, was won by a freshman, Adelaide Rubin; the mixed doubles Ping-Pong Tournament; the Volley Ball, Captain Ball and Baseball Tournaments; the Inter-Section and Individual Swimming Meets. The Inter-school activities in which Normal participates are the Inter-Collegiate Telegraphic Swimming Meets; Play Days; and Junior College Conferences.

The W.A.A. has a point scoring system in use in Women's Athletic Associations in most colleges. The awards are the minor "N," 500 points; the major "N," 1000 points; and the gold pin, 1500 points. The official board is composed of the officers and the managers of the different sports. Meetings are held whenever necessary; with the guidance of Mrs. Nellie B. Cochran, parties are planned and expenses budgeted.

W. A. A. SPORTS MANAGERS

September to February		February to June
Emelie Utteg	Archery	Virginia Lorek
Mary Ellen Richards	Bowling	Marian Erdmann
Eleanor Klos	Hiking	Minnie Langdell
Lillian Anderson	Ping Pong	Frances Reedy
Charlotte LeBosquet	Riding	Shirley Hassel
Ada Sexauer	Swimming	Mary Roche
Doris Loescher	Tennis	Adelaide Rubin
Thelma Lundgren	Captain Ball	
	Volley Ball	Amelia Spina
	Baseball	Mary Ellen Richards



TOP PICTURE, WINNING CAPTAIN BALL TEAM, SECTION Kg. 4:

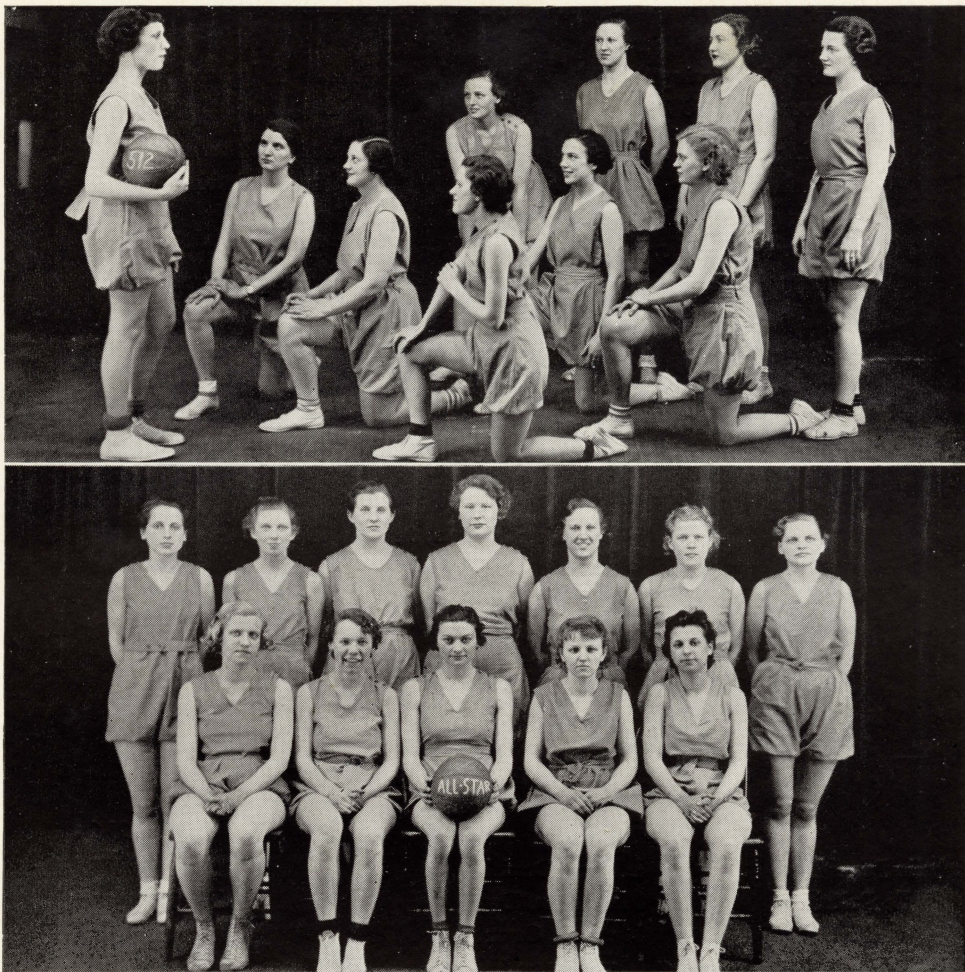
Second Row—P. Grabowsky, M. Watgen, C. Le Bosquet, I. Hill, D. Loescher, R. Vander Mey, M. Larson, E. Gode.

First Row—M. Taylor, M. Roche, D. Tepper, R. Vanderpoel, R. Solomon, L. Strasen.

BOTTOM PICTURE, ALL-STAR CAPTAIN BALL TEAM:

Second Row—D. Loescher, M. Woodward, M. Richards, M. Larson, E. Mielke, D. Westberg, R. Byles.

First Row—M. Roche, M. Claffey, B. Nayder, I. McDonnell, L. Hills, J. Van Dam.



TOP PICTURE, WINNING VOLLEY BALL TEAM, SECTION 512:

First Row—E. Ferchoff, M. Langdell, M. Nolan, G. Sowa.

Second Row—I. Pozer, Y. Van Lent, E. Knoppel.

Third Row—H. Taylor, L. Schuman, C. Toomey.

BOTTOM PICTURE, ALL-STAR VOLLEY BALL TEAM:

Second Row—R. Solomon, M. Clifford, H. Burke, P. Grabowsky, H. Taylor, I. Olson, H. Kozimor.

First Row—L. DeVoe, R. Vanderpoel, A. Spina, L. Trecka, D. Tepper.

W.A.A. WINNERS OF AWARDS

Inter-Section Swimming Meet, November, 1935

Winning Section, Kg. 4
Doris Loescher
Jeanette Van Dam
Margaret Claffey
Mary Roche

Intercollegiate Telegraphic Swimming Meet, March, 1936

Point Winners
Adelaide Rubin
Doris Loescher
Ferne Goldberg
Ruth Zimmerman

Captain Ball Tournament, January, 1936

Winning Section, Kg. 4

Volley Ball Tournament, March, 1936

Winning Section, 512

Tennis Tournament, October 1935

Winner—Helen Augustiny

Runner-Up—Adelaide Rubin

RED CROSS LIFE SAVING AWARDS

January, 1936

Isabelle Pozer	Liberty Daniel
Rochelle Pritzker	Mary Rita Davis
Mary Roche	Marjorie German
Adelaide Rubin	May Larson
Jeanette Van Dam	Doris Loescher
Ruth Zimmerman	Louise Neubauer

June, 1936

Olive May Wilhelms
Edna Sonken
Esther Sheehy
Pauline Sauer
Marian Maher

HIGHEST SCORE BOWLERS

January, 1936

Eleanor Gode
Marian Maher
Evelyn Hauser
Charlotte LeBosquet
Ann Parker

June, 1936

Margaret Taylor
Marian Maher
Ellen Bretsnyder
Marian Erdmann
Ann Parker

HIGHEST SCORE ARCHERS

January, 1936

Virginia Lorek
Lillian Strasen
Virginia Wilson

June, 1936

Helen Fraatz	Iona Pronger
Helen Ketola	Regina Vanden Bosch
Virginia Lorek	Virginia Wilson







OFFICERS

President	Knute Petersen
Vice President	James Kennedy
Secretary	Roland Loess
Treasurer	Julius Silverman

Men's Athletic Association

Since every man upon his matriculation at Normal is automatically enrolled in the Men's Athletic Association, and since the majority of the men become actively interested in the M.A.A. program, it is not at all surprising that the many and varied ventures of this male organization are so successful. Under the guidance of capable governing officers and with the fine coöperation of the faculty members, the many enterprises were satisfactorily carried through and formed an integral part of school life during the years of 1935 and 1936.

Besides backing the athletic teams representing Normal in junior college competition, the M.A.A. sponsored ping-pong, basketball, free-throw, baseball, tennis, boxing and fencing tournaments; helped to have the Men's Room changed to larger and improved quarters; held several parties wherein both food and fun predominated, and presented two highly praised school assemblies during the past two years.

The 1935 assembly program consisted entirely of student talent and was heartily received by the student body. Music, singing, dancing, comedy and athletic demonstrations combined to make the M.A.A. production fast-moving and most entertaining. This year an entirely novel program was made possible through the efforts of Athletic Director Kripner. Through the courtesy of Lew Fonseca, former baseball star and now publicity director of the American League, the official baseball sound movie entitled "Take Me Out to the Ball Game" was shown. To open the program the men faculty members and students of the college were introduced through the medium of motion pictures taken on the campus.

Thus, notwithstanding that they were greatly in the minority as far as numbers go, the men of Normal made their spirit felt in the enthusiasm and vigor with which they endorsed and supported the many undertakings of the men's Athletic Association. They owe much of their success to the coöperation of their adviser, Mr. Edwin Brye, and to the assistance and coaching of Director Joseph Kripner.

Basketball — Baseball — Tennis

Basketball has been one of the most popular sports at Normal for many years, and the teams representing the school have been quite successful. Lack of material was the chief handicap confronting Mr. Kripner during the last two seasons; however, despite the dwindling number of men eligible to compete in the N. I. J. C. Conference, the hardwood squads were able to hold their own against the best and kept fighting until the end.

Captain Petersen piloted the team of 1934-35. Although they did not quite measure up to the caliber of the preceding team, they succeeded in scoring several upsets by playing an aggressive brand of basketball. Kennedy at forward took high scoring honors for the season, but much credit must be given to the other players wearing the Green and White for fine team work and defensive play. At the close of the season the team entered the state conference tournament, but were vanquished by the towering Joliet five.

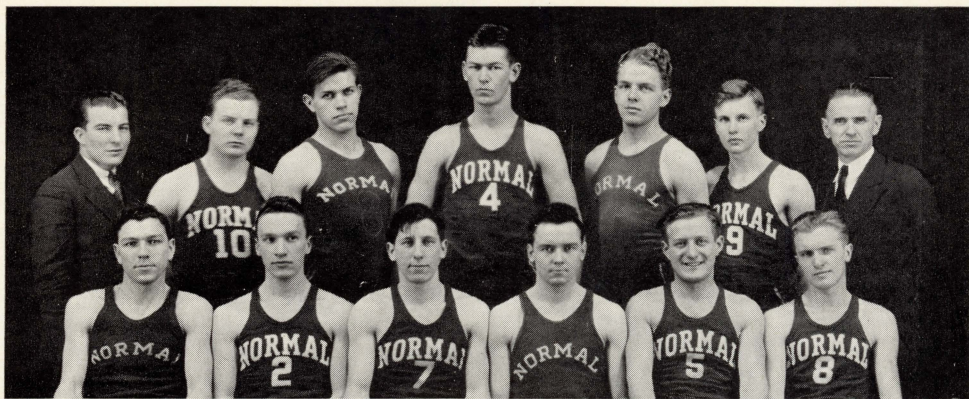
Normal again entered the conference race during 1935-1936, but the loss of Petersen, Silverman, Wallace, and Loess during the middle of the season was a heavy blow. It was necessary to use inexperienced men to plug the gaps, but with each succeeding contest the squad displayed more skill under Captain Kennedy. They climaxed their efforts by trouncing Lisle in a hard-fought battle to end the season successfully.

Normal's baseball team enjoyed a successful season during 1935, with seven games to their credit in a schedule of ten. Behind the steady pitching of Morris Solomon, the team scored six consecutive victories before dropping a close decision at Joliet. The fine twirling of Solomon was a major factor in the victories. Excellent pitching, coupled with good hitting and fielding on the part of his team-mates, enabled Normal to put forth some stiff opposition. Because of the shortage of men eligible for conference competition, the squad played an independent schedule, downing such strong opponents as Morton, Lisle, Aurora, and Wright Junior College.

The majority of the regulars of 1935 returned this year with one conspicuous gap left by the graduation of Solomon. However, a winning team was soon whipped into shape, with Jack Wallace on mound duty and with such seasoned campaigners as Goodwin, Flugel, Petersen, and Koscielniak as a nucleus. The opening game resulted in a victory for Normal, and they faced the remainder of the schedule with much confidence. The ten-inning thriller, won from Morton by the close score of 5 to 4, was a fine beginning for the 1936 baseball campaign.

Six men were selected for the 1936 tennis season to participate in the competitive matches scheduled for the season. Five of them were regulars, returning from the 1935 team with added experience, while the sixth was a newcomer of considerable promise. Glasow, the new addition, is the winner of the M.A.A. singles tournament.

The first Conference match was lost to Morton. Lack of sufficient practice was evident in the play of the Normen; however, they gave a good account of themselves and showed strength in the doubles. Regular outdoor practice seems to be the only thing the racket wielders need.



TOP PICTURE BASKETBALL TEAM:

Second Row—R. Goodwin, J. Kinney, E. Koscielniak, C. Bechel, A. Flugel, O. Glasow, Mr. Kripner,
First Row—W. Fasan, G. Vincent, J. Wallace, J. Kennedy, J. Silverman, K. Petersen.

MIDDLE PICTURE, BASEBALL TEAM:

Second Row—Mr. Kripner, H. Gross, R. Cannon, E. Quinn, A. Hitchcock, R. Cleary, G. Vincent,
 W. Norman, J. Kinney.

Front Row—J. Wallace, K. Petersen, E. Koscielniak, J. Kennedy, R. Goodwin, A. Flugel.

BOTTOM PICTURE, TENNIS TEAM:

Second Row—J. Kinney, J. Kennedy.
Front Row—O. Glasow, G. Vincent, C. Bechel, R. Cannon.

Class Poem

JUNE, 1936

In nineteen hundred thirty-three
We came to you, our school so dear;
Within our hands you placed the key
Of shining wisdom, bright and clear.
You've shown us many a lofty tower,
Our gratitude is scarce enough;
You've given us sweet wisdom's power,
That mortal foes cannot rebuff.
Your teachers proved both staunch and true,
Their interest never seemed to fail;
They've given us a broader view,
And opened brighter seas to sail.
And thus, we thank you on this day,
For every opportunity
That's made our voyage on life's way
A sweet and blissful memory.
We'd love to linger here with you,
Within these halls of wisdom fair;
But there is urgent work to do,
In which we all must have a share.
We greet you with a fond farewell,
We're sad the parting hour is here;
And yet your spirit e'er will dwell
Within our hearts throughout each year.
Alberta W. Maxwell.

By the Side of the Road

As I stand by the road watching people ride by,
To a place that is distant, unknown,
I think once again of the day on which I
Started traveling that road all alone.
Then, I knew where I wanted to go,
But always I've changed my mind,
Before I really had time to know
The value of things left behind.
So I'm waiting for someone to tell me
Just where it was I wished to go,
By the roadside I wait 'neath a tree—
Someone will tell me, I know.
But the world travels swiftly, relentlessly past—
If you stand by the road looking on,
And just wait for your turn, you'll be lost,
And life's only chance will be gone.
Edward Quinn.

In Some Other Life

In some other life,
Were I to choose,
I'd be a candle
Burning bright,
A white gleam beckoning
Through dark confusion—
Turning to beauty
Some homely thing;
Making of it
A lovely memory.

Or if, in that life,
There were enough of candles and
They stronger than the dark,

This would I choose—
To be a pine,
Tall-stretching,
Dark against green sky,
Trapping gold sun, gold stars,
In a seine of branches,
Tufting drifts of snow
For soft balm of my nakedness,
Tall-stretching,
Beside some long-used road;
Proud in my height,
Humble in my heart.

This would I choose
In some other life.

Pearl Joseph.

Reminiscences of a Steak Fry

We watched our camp fires burn high and bright as all our old gang sang and sang.
And then our lilting melodies drifted from "Pack Up Your Troubles" to "The Long,
Long Trail, to humming,—to silence—

We are just like those fires of ours, for—

Our friendship is a burning flame
Guiding our lives forever,—
Or can it be that dancing light
Will die, and our hearts be severed?

Together we watched the tiny sparks
Soaring—Who knows where?
Hand in hand, we built our dreams,
Then watched them disappear.

They were made of fire, those fancies of ours,
And glowed for a little while;
We saw them leap, then fade once more—
A sigh—a shrug—a smile.

We looked again. The sparks were gone.
The fire was low.—Remember?
A hush, and all was over—
Our dream a dead, cold ember.

Mary B. Cummings.

Major Boner's Hour

"Ladies and gentlemen! Tonight we have the pleasure of saluting the Chicago Normal College as our honored guest. I am delighted to say that already a delegation of several young women from the college have come to inform me that I have been selected co-chairman of the 'Campus Beautiful' committee, an honor I share with Mr. Henke. I have also been told that an assembly is being planned in my honor. Last, but not least, I have been given drawings, poems, compositions, and songs dedicated expressly to me by the pupils of the Parker Practice School. I am truly overwhelmed by the fine response this group of young women and three young men have shown me. Again I say, 'Here's to Progressive Education!'"

"Our first amateur this evening is a representative from the Normal College. His application states that he is a doctor, lives with his family, and has a secret ambition to become a fire chief, because he loves to direct fire drills. His name is Branom, and he's going to sing 'Smile, Darn You, Smile' to the tune of 'For He's a Jolly Good Fellow'. Well, that's splendid; we're always open for novelties—Take it away!"

"Now we have another charming person from the College. What is your selection to be, Miss Taheny?"

"Major, I'm going to sing 'The Music Goes 'Round and 'Round; Where It Stops Nobody Knows'."

"That's an old favorite of mine, Miss Taheny. Is it your favorite number, too?"

"No Major, my favorite number is Worrykill 89933!"

"All right! All right! Now I want to remind our radio audience to cast their votes for our amateurs by telephone, telegraph, cable, wireless, SOS, remote control, or anything else that happens to be convenient. The number in New York is Worrykill 89933."

"Now in behalf of our sponsor, Chase and Catcher, I will turn over the program to Graham A. McCracker, our announcer."

"Just a few words, Major, to remind our listeners that we have solved the problem of what to do with the extra water supply caused by the recent floods—just use it to make more Chase and Catcher Coffee! Tallyho!"

"Thank you, Graham. It gives me great pleasure to announce that Dr. Branom has been engaged by the Fourth Battalion to sing at the Annual Firemen's Ball at Topeka. Congratulations, Fire Chief!"

"In conclusion, ladies and gentlemen, we have Dr. Geyer and Dr. Johnson harmonizing 'The Mimeographed Sheets, They Ain't What They Used to Be!' Bong!"

Sarajane Caddick.

Caprice

The lightning is a silver sprite
Who laughs and leaves a trail of white.

The thunder roars in rage that she
Should dance and laugh so wantonly.
Helen Walsh.

Lost

The haughty smoke
Disdained to joke
With the happily chuckling train.
He fled the stack
On the engine's back
And

NEVER

was seen

again!

Helen Walsh.

The Forgotten Man

Let me tell you I was frightened! I rubbed my eyes and looked again; no, I hadn't been mistaken. There was the old clock waving his arms and becoming wilder every second. The next instant, believe it or not, he began to talk.

"Come here, Miss Normalite," "I want to talk to you."

"Yes, sir." How meek my voice sounded! What mysterious power did this supposedly inanimate object have over me?

"What can I do for you, Mister Clock?"

"Plenty," was the retort. "Don't you write for the Emblem?"

"Just a little bit. But how does that concern you?"

"That's just it," he snapped, "Nobody thinks it does. I'm an important character around this school and I deserve a place in that Emblem of yours."

Was I stunned! I just stood there unable to say a word.

"Don't gape at me," he exclaimed suddenly, "That's what they all do when I ask to get in the Annual. I've been trying for years." He stared at me in disgust.

"B-b-b-but I couldn't write a discourse on just a clock—"

The instant the words were uttered, I realized my mistake. He started to storm more violently than ever.

"Just a clock—just a clock," he raged. "I'm important enough during class time to absorb the attention of nearly everyone in the room, but when I turn around and ask one little favor of you, I'm too insignificant to waste any time on."

His hands were waving as he became more and more excited. "I've seen you look at me anxiously more than once during the hours you've spent in this room.—Well, let's have an answer—Are you or are you not going to put me in the Emblem?" Every number on his face was taut, and he was shaking so, I was afraid he would come down any minute.

"Yes, oh yes!" Wasn't it best to humor him, soothe him a little? "I'll do my best, sir, but I can't promise."

"I knew you'd see it my way sooner or later!" How quickly he was appeased. His anger subsiding, he even chuckled.

I waited for him to say more, but nothing further happened. I looked around; students had begun to drift into the classroom, for the ten-minute passing period was up. I glanced up at him once more, but somehow he was again just what he seemed to be—only a clock.

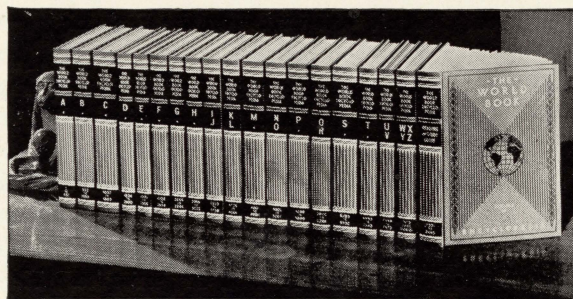
Betty Cowell.

Found In a Grad's Sociology Notebook:

If a rock hits you on the head,
You'll know you're in the Stone Age;
Watch a dog at his evening meal,
You might think you're in the Bone Age;
Listen to a tinkling bell,
You'll know you're in the Phone Age;
If your boy friend fails to call,
This seems like such a Lone Age.
Back-fence serenaders make us call
This period the Moan Age;
When there's excitement, noise and fun,
You know it's just Our Own Age.

Mary B. Cummings.

The WORLD BOOK
ENCYCLOPEDIA . . .



. . . *New* UNIT TEACHING
EDITION

EDUCATORS who know say The WORLD BOOK ENCYCLOPEDIA is not only the greatest and finest source of reference material on the market today, but it provides the *quality* and the *quantity* of *usable material* teachers and pupils *need*, no matter what the plan of instruction may be. *For more than five years* The WORLD BOOK ENCYCLOPEDIA has been supplying teachers the country over with Activity Units FREE of charge! . . . Units which dovetail with modern plans of instruction, completely worked out, classroom-

tested and ready for use. This is the cooperation progressive teachers . . . owners of The WORLD BOOK ENCYCLOPEDIA, are using. You too can accomplish educational objectives more easily by obtaining the

FREE Activity Units

available to all purchasers of The WORLD BOOK ENCYCLOPEDIA. Whether you prefer material to work out your own units or Activity Units already worked out, either or both are yours when you purchase The WORLD BOOK ENCYCLOPEDIA!

*Progressive Teachers MUST have the
MATERIAL THIS Encyclopedia provides*

Write for further information to

W. F. QUARRIE & COMPANY

35 East Wacker Drive

Chicago, Illinois

A University Which Can Profoundly Affect Your Life

DE PAUL UNIVERSITY
CHICAGO

Summer Session June 24 to August 1

GRADUATE SCHOOL

College of Liberal Arts

School of Music

College of Law

Department of Drama

College of Commerce

Secretarial Department

*"Special attention given to Normal College graduates
who wish to complete degree requirements"*

FOR INFORMATION ADDRESS THE REGISTRAR

DE PAUL UNIVERSITY

64 East Lake Street

Chicago, Illinois

YOUR SCHOOL LUNCHROOM

Is Always Ready to Serve You

THE BEST FOOD FOR
THE LEAST MONEY

ROSE NIXON, MANAGER

Midway Riding Academy

6037 Drexel Blvd.

Midway 9571

Loretto Florist

505 W. 69th St.

Englewood 1200

EARL BROWN'S ORCHESTRA

THE SOCIAL HOUR MUSICIANS

Music for All Occasions

6827 S. Marshfield Ave.

Prospect 7124

Bartsch's Book Store

Headquarters

For All

Normal College Supplies

324 W. 69th St.

THREE MONTHS' COURSE

FOR COLLEGE STUDENTS AND GRADUATES

A thorough, intensive, stenographic course—
Gregg Shorthand—starting January 1, April 1,
July 1, October 1. Interesting Booklet sent free,
without obligation—write or phone.
No solicitors employed.

M O S E R

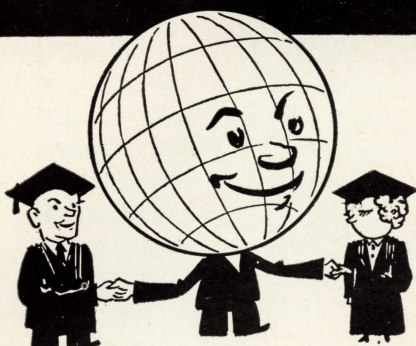
BUSINESS COLLEGE

PAUL MOSER, J.D., PH.B.

Regular Courses, open to High School Graduates only, may be started any Monday. Gregg and Munson Shorthand—also Stenotypy. Day and Evening. Evening Courses open to men.

116 S. Michigan Ave., Chicago, Randolph 4347

Bryant & Stratton COLLEGE



Introduces **You to the Business World!**

During the last 80 years this school has successfully inducted over 100,000 young men and women into preferred positions in the business world.

The largest enrollment we have ever known—the pick of the youth of the middle West—are now training in our classrooms for places of future leadership.

Complete Business Training including Executive Secretarial Course, Business Administration Course, Intensive Stenographic Course for college men and women, Stenotypy, etc.

Visit, write or phone for bulletin. RANdolph 1575

REGISTRAR, ROOM 1000, 18 SOUTH MICHIGAN AVENUE, CHICAGO, ILLINOIS

Jodar and Stuckey — Good Drugs
401 W. 69th St.

Hofert's Beauty Shop

344 W. 69th St.

Wentworth 4481

METROPOLITAN BUSINESS COLLEGE

64TH SUMMER TERM
OPENS JUNE 22

Secretarial and Business Courses
Individual Instruction and Progress

Free Employment Service
for Graduates

REDUCED SUMMER RATES

Visitors Welcome

Booklet Free

SIX SCHOOLS

37 S. Wabash Ave. Randolph 2637

Lincoln Ave. at Roscoe Grace. 2227

Western & Milwaukee Ave. Arm. 8011

9 S. Crawford Ave. Nevada 3680

304 W. 63rd St. Wentworth 2227

11024 S. Michigan Pullman 6594

Clark-Brewer Teacher's Agency

64 E. Jackson Boulevard

While waiting for an assignment, see the country. Many beginning teachers placed every year. Consult us.

N. F. OPITZ

BAKERY—CAFETERIA

Fountain Service

School Supplies

6846 S. STEWART AVE.

Normal 0166



THE PHOTOGRAPHS

FOR THE EMBLEM
WERE TAKEN BY

THE JEAN SARDOU STUDIO



CARSON, PIRIE, SCOTT AND CO.
CHICAGO



Directory of the Graduates

Anderson, Lillian	8127 Woodlawn Avenue
Arden, Rose	5451 Quincy Street
Armstrong, Glen	6511 Kenwood Avenue
Baitel, Libuse	1758 W. 17th Street
Bard, Elizabeth	6925 S. Peoria Street
Bell, Clarence	8353 S. Carpenter Street
Bencur, Lillian	2116 S. Springfield Avenue
Bernstein, Edith	1346 Karlov Avenue
Blakeway, Ada	8525 S. Carpenter Street
Bodian, Adeline	5469 Ingleside Avenue
Bolling, Martha	5639 N. Talman Avenue
Bonfield, Kathryn	2474 E. 74th Street
Boyle, Elizabeth	6300 Broadway Avenue
Breneman, Chester	6221 Ellis Avenue
Bruckner, Lois	3719 Lyndale Street
Byrne, Mary Irene	6608 S. Peoria Street
Caddick, Sarajane	7734 Saginaw Avenue
Cesario, Delia	1940 Highland Avenue, Berwyn, Illinois
Cleary, Robert	6541 S. Perry Avenue
Clinch, Margaret	6425 N. Campbell Avenue
Conover, Eleanor	7332 La Fayette Avenue
Cowell, Betty	2700 N. Sayre Avenue
Cummings, Mary B.	1640 N. Central Avenue
Davis, Mary Rita	9126 Baltimore Avenue
Davis, Rose	2555 Cortez Street
De Boer, Ruth	3833 Eddy Street
De Marais, Alyss	531 W. 60th Street
Dixon, Coralie	1509 St. Charles Road, Maywood, Illinois
Dobrzynski, Chester	2313 Canton Street
Duff, Ruth	6524 Oliphant Avenue
Dushek, Rosemary	2434 Princeton Avenue
Ebert, Phyllis	6940 Michigan Avenue
Elisberg, Elinor	1446 Elmdale Avenue
Erickson, Ruth	7916 Laflin Street
Fitzgerald, Helen	7022 S. Bishop Avenue
Fitzgibbons, Margaret	4826 Warner Avenue
Flugel, August	4733 Jackson Boulevard
Fosse, Elizabeth	1015 Wesley Avenue, Evanston, Illinois
Garber, Esther	1400 S. Keeler Avenue
Garrison, Rosanna	310 E. 55th Place
Gilbert, Mally Elaine	2327 W. Collins Street, Blue Island, Illinois
Giles, Julia	1312 N. 17th Avenue, Melrose Park, Illinois
Glazer, Evelyn	4225 N. St. Louis Avenue
Goodwin, Raymond	6110 S. Talman Avenue
Gregg, Aidah	2304 Will Place
Gross, John W.	3237 Indiana Avenue
Gunderman, Fred	6036 S. Rockwell Street
Guzman, Augusta	342 W. 69th Street
Hartigan, Elizabeth	6550 Bosworth Avenue

Directory of the Graduates

Henaghan, Virginia	1149 N. Lockwood Avenue
Hershfield, Harriet	451 Oakdale Avenue
Hogan, Katherine	6511 Greenview Avenue
Holden, Ruth	1816 N. Clark Street
Honan, Mary	5238 Drexel Avenue
Horrocks, Dorothy	834 Drexel Square
Hurney, Dolores	7948 Bennett Avenue
Jacobsen, Harriet	8030 Blackstone Avenue
Johnson, Margaret	8108 S. Peoria Street
Johnson, Walter	1154 N. Latrobe Avenue
Keating, Anna M.	4429 W. Congress Street
Kennedy, Ruth	849 N. Le Claire Avenue
Klein, Marguerite	1704 W. Marquette Road
Knaizer, Jacob	1350 S. Avers Avenue
Krafft, Marguerite	314 S. 22nd Avenue, Bellwood, Illinois
Krupsky, Channon H.	1021 N. Sacramento Avenue
Kuellmer, Bernice	7002 Wabash Avenue
Lee, Clarice	2317 N. Kostner Avenue
Leonard, Mary	7832 S. Green Street
Levander, Elien	4934 Cortez Avenue
Leyden, Mary	6930 Oglesby Avenue
Liddy, Margaret	5100 N. Kinzie Street
Lindquist, Linnea	1314 Washington Street, Evanston, Illinois
Liszt, Irene	Palos Park, Illinois
Lundgren, Thelma	9 E. 111th Place
Lynch, Myrtle	7230 Rhodes Avenue
McCarthy, Alice	2541 Logan Boulevard
McGough, Cecilia	5106 N. St. Louis Avenue
Martinek, Grace	5128 Patterson Avenue
Maxwell, Alberta	13914 Wabash Avenue
McGrath, Josephine	4446 Lowe Avenue
Molander, Alfhild	7004 S. Sangamon Street
Monaco, Amalia	5423 W. Van Buren Street
Murnighan, Corrinne	7823 Morgan Street
Murphy, Helen Marie	1300 W. 64th Street
Newlands, Marjorie	4445 N. Laporte Avenue
Nohelty, Josephine	4315 Monroe Street
O'Brien, Margaret C.	3331 W. Van Buren Street
O'Connor, Katherine	6168 Winthrop Avenue
O'Connor, Ruth	7820 Paulina Street
O'Hearn, Aldan	5422 Quincy Street
O'Hearn, John	5422 Quincy Street
O'Malley, Fuller	4123 N. Ashland Avenue
O'Shea, Alice	4439 Wilcox Street
Pacelli, Felicia	1440 W. Flournoy Street
Periolet, Perside	1629 Fargo Avenue
Porter, Ruth	6056 S. Washtenaw Avenue
Pratt, Thelma	1752 W. Taylor Street
Pritzker, Rochelle	4616 N. Central Park Avenue

Directory of the Graduates

Przybylo, Eleanor	1143 W. Chicago Avenue
Quinn, Edward	7915 Elizabeth Street
Quinn, Paul	5711 S. Green Street
Rades, June	3258 W. North Avenue
Reedy, Frances	8234 Bishop Street
Rice, Lucile	517 W. 43rd Street
Riordan, Gertrude	1446 Thome Avenue
Riordan, Marian	3039 S. Loomis Street
Rosen, Rachel	7746 Essex Avenue
Roy, Gertrude	5644 South Wells Street
Roy, Mary	5644 South Wells Street
Savage, Evelyn	3240 Lake Shore Drive
Savage, Louise	3240 Lake Shore Drive
Schatzman, Rose Ann	8238 Avalon Avenue
Scully, Joan	15530 Lexington Avenue, Harvey, Illinois
Sexauer, Ada	4730 Fulton Street
Shea, Eugenia	6328 University Avenue
Simpson, Mary	3619 Flournoy Street
Skelton, Elaine	6353 S. Green Street
Smith, Virginia	6921 S. Michigan Avenue
Solomon, Morris	3519 Lawrence Avenue
Sonken, Edna	1646 N. Leavitt Street
Spain, Bernice	4721 Washington Boulevard
Stein, Leona	5916 W. Roosevelt Road
Steinberg, Ethel	7020 Merrill Avenue
Streisinger, Elvira	1610 Carmen Avenue
Sudin, Samuel	4902 N. Springfield Avenue
Sullivan, Lucille	5062 Kenmore Avenue
Sundmacher, Betty	5014 N. Ashland Avenue
Thomson, Frank	7435 Prairie Avenue
Uber, Edward	5849 N. Artesian Avenue
Viehoff, Jessie	1933 Greenleaf Avenue
Vogelei, Elizabeth	2454 Smalley Court
Walp, Lucile	5241 Washington Boulevard
Walters, Joel	429 Wrightwood Avenue
Westermeyer, Florence	3509 W. Congress Street
Wiaduck, Florence	1124 South Lombard Avenue, Oak Park, Illinois
Wilhelms, Olive May	7354 Clyde Avenue
Winegar, Harold	11816 Yale Avenue
Wise, Carol	4635 McLean Avenue
Yarmoluk, Olga	6075 76th Avenue, Argo, Illinois
Young, Eleanor Ann	4949 Henderson Street
Young, Eleanore M.	1914 Grant Street, Evanston, Illinois
Zaretsky, Mamie	1642 S. Homan Avenue
Zerega, Columba	948 W. Garfield Boulevard

PRINTED BY THE LINDEN PRINTING COMPANY
ENGRAVED BY THE WALLACE-MILLER ENGRAVING CO.

