

8-31-1984

FYI- Aug. 31, 1984

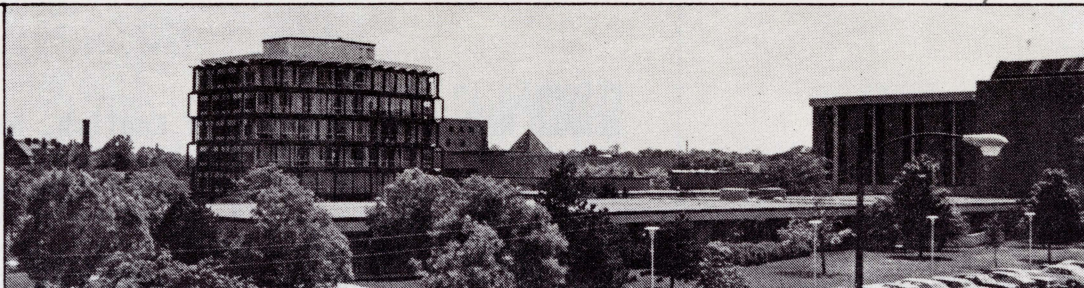
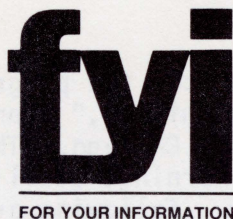
University Relations Staff

Follow this and additional works at: <https://neiudc.neiu.edu/fyi>

Recommended Citation

Staff, University Relations, "FYI- Aug. 31, 1984" (1984). *FYI*. 61.
<https://neiudc.neiu.edu/fyi/61>

This Book is brought to you for free and open access by the Publications at NEIU Digital Commons. It has been accepted for inclusion in FYI by an authorized administrator of NEIU Digital Commons. For more information, please contact neiudc@neiu.edu.



August 31, 1984

FYI is published by University Relations, Northeastern Illinois University, for university faculty and staff members. Please send information to Terry Katz, University Relations, C-437.

SCHEDULE FOR PUBLIC TRANSPORTATION



In the July 31 issue of FYI, it was noted that the library will extend its evening hours. Starting September 3, the library will remain open Monday through Thursday, 7:45 a.m. - midnight; Friday, 7:45 a.m. - 6:00 p.m.; and Saturday, 9:00 a.m. - 5:00 p.m. The following information is provided to accommodate students, faculty, and staff who will be using public transportation after 12:00 a.m.

Schedule for late night buses and "L" train:

- Kimball Bus - Arrives at Kimball and Bryn Mawr
 - Southbound - 12:20 and 12:40 a.m.
 - Northbound - 12:20 and 12:40 a.m.
- Foster Bus - Arrives at Foster and Kimball
 - Eastbound - 12:07, 12:27, and 12:47 a.m.
 - Westbound - 12:00, 12:20, and 12:40 a.m.
- Peterson Bus - Arrives at Peterson and Kimball
 - Eastbound - 12:12, 12:32, and 12:52 a.m.
 - Westbound - 12:07, 12:27, and 12:51 a.m.
- Pulaski Bus - Arrives at Pulaski and Foster
 - Northbound - 12:06, 12:17, and 12:32 a.m.
 - Southbound - 12:04, 12:22, and 12:40 a.m.
- Ravenswood "L"
 - Stops running through to downtown at 10:00 p.m.
 - Ravenswood "L" runs to Belmont every 15 minutes on the hour, 24 hours a day.

For additional information, please contact the CTA at 836-7000.

TUITION WAIVERS FOR SENIOR CITIZENS

Under the recently enacted Public Law 83-850, senior citizens who are 65 years of age or older and whose annual income is less than \$12,000 will be permitted to enroll in regularly scheduled courses without paying tuition and other mandatory fees. Senior citizens will be able to take courses on a credit or non-credit basis provided that available classroom space exists and tuition-paying students enrolled constitute the minimum number required for the course.

This regulation does not apply to courses offered only on a non-credit basis or to courses designed especially for senior citizens. Previously, tuition was waived for seniors only under Northeastern's Community Listeners non-credit program. For further information on the tuition waivers, please contact the Office of Financial Aid, extension 341.

NEW NINE-DIGIT ZIP-CODE NUMBER

The United States Postal Service is moving ahead with the automated processing of first-class letter mail by issuing nine-digit zip-code numbers. The new zip-code number for Northeastern is 60625-4699.

IN THE MEDIA

UPCOMING IN THE MEDIA

GERALD NEMANIC, professor of English, has announced the programs scheduled for September for his show, "Writing/Chicago," a program devoted to the writers and literary life of Chicago. The show is broadcast on WBEZ-FM (91.5) on Monday mornings at 11:00 a.m. Nemanic is producer and host of the show. Following are the programs scheduled for September: September 3 - Interview with James Sloan Allen, author of The Romance of Commerce and Culture; September 10 - Interview with Louise Young, a nature writer and author of The Blue Planet; September 17 - "Chicago," TriQuarterly Magazine, readings from this issue of TriQuarterly, a journal of art, writing, and cultural inquiry, published by Northwestern University; and September 24 - "Writing the Rails: Trains in Chicago Literature."

"Only about four square miles remain of the 40,000 square miles of virgin prairie," noted ROBERT BETZ, professor of biology, in the Chicago Tribune, Tuesday, August 7. Betz helped create one of the most notable restored prairies in the Chicago area, 375 acres at Fermilab National Accelerator Laboratory near Batavia. "At Fermilab, 60 species have been blooming since 1974 in the prairie restoration area in the center of the accelerator ring."

GERALD NEMANIC and HARRY WHITE, professors of English, contributed to an article on "An Interview with Saul Bellow" in the Spring-Summer 1984 issue of TriQuarterly Magazine, a journal of art, writing, and cultural inquiry, published by Northwestern University.

Northeastern's Board of Governors Program was highlighted in an article on "Life's Experience Gets Credit - Degree Programs Build on Learning Gained Outside Classroom" in the Chicago Tribune, Sunday, August 5. In another article on the Board of Governors Program in the Lerner Newspapers, Tuesday, July 24, BETTYE PARKER-SMITH, director, noted that the most popular fields are computer science and business.

In the August issue of Chicago Magazine, Northeastern's University Without Walls and Mini-U programs were highlighted in an article on "Getting Back Into the Swing of Learning." ULESTINE WATSON is coordinator of University Without Walls and A. ALYCE CLAERBAUT is assistant coordinator of Mini-U.

HONORS AND ACTIVITIES

DONN BAILEY, director of the Center for Inner City Studies, is chairman of a task force to help local businessmen and community groups benefit from the 1992 Chicago World's Fair.

REYNOLD FELDMAN, dean of the Center for Program Development, will serve as a member of the Chicago Boys Clubs' International Committee.

ELIEZER GEISLER, professor of management, attended the international meeting of the Institute of Management Sciences in Copenhagen, Denmark, during June.

CHARLES KNOX, assistant professor of inner city studies education, has been appointed to State Representative's Larry Bullock's 23rd Legislative District Task Force on School Reform.