

10-15-1984

FYI- Oct. 15, 1984

University Relations Staff

Follow this and additional works at: <https://neiudc.neiu.edu/fyi>

Recommended Citation

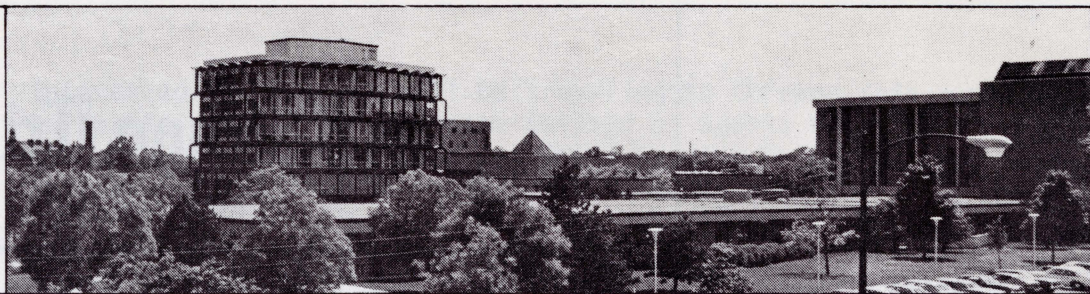
Staff, University Relations, "FYI- Oct. 15, 1984" (1984). *FYI*. 64.
<https://neiudc.neiu.edu/fyi/64>

This Book is brought to you for free and open access by the Publications at NEIU Digital Commons. It has been accepted for inclusion in FYI by an authorized administrator of NEIU Digital Commons. For more information, please contact neiudc@neiu.edu.

J6/55

fvi

FOR YOUR INFORMATION



October 15, 1984

FYI is published by University Relations, Northeastern Illinois University, for university faculty and staff members. Please send information to Terry Katz, University Relations, C-437.

**COMPTON FIRST SPEAKER
IN
LECTURESHIP SERIES**



For the third year, the City Club of Chicago and Northeastern Illinois University are joining forces to coordinate a Distinguished Lectureship Series. This year's series, entitled "Chicago's Heritage of Achievement," will bring prominent civic leaders to Northeastern's campus to discuss the significant contributions Chicago and Chicagoans have made to our nation's growth. Underwritten by a grant from Inland Real Estate Corporation, the series is designed for the leaders in business and industry, community organizations, government and education, and for citizens of Chicago and the surrounding suburban communities.

Daniel L. Goodwin, president of Inland Real Estate Corporation and an alumnus of Northeastern, said, "More than 60,000 Chicago-area residents live in 30,000 Inland-managed apartment units. In addition, 10,000 Chicago-area investors own interests in our real estate limited partnerships. Obviously, we are committed to Metropolitan Chicago. Inland's sponsorship of the Distinguished Lectureship Series underscores our commitment to the people and communities we serve."

James W. Compton, executive director of the Chicago World's Fair 1992 Authority and president of the Chicago Urban League for the past 12 years, will discuss "The 1992 World's Fair: Chicago's Future Heritage" on **Friday, October 19**, at 11:00 a.m., in room CC-217. "Just as Lincoln Park served as a hub for North Side development, so will a 600- to 700-acre South Side fair site, and its residual parkland, serve as a catalyst for the re-emergence of the South Side," Compton observed.

Richard Katschke, director of university relations and coordinator of the lectureship series, said other lecturers scheduled for this year's series will include Bill Veeck, author and former owner of the Chicago White Sox; Lucy Salenger, consultant and former director of the Illinois Film Office; Philip M. Klutznick, former United States Secretary of Commerce; Dempsey Travis, author and civic leader; and Addie Wyatt, international vice-president of the United Food and Commercial Workers, International. A brochure detailing programs in this year's lectureship series will be distributed to the university's faculty and staff.

Chicago Tribune

Thursday, September 27, 1984

NORTHEASTERN HITS
ORFIELD REPORT

Northeastern and 'inequality'

By Ronald Williams

In recent weeks, The Chicago Tribune has reported extensively on "The Chicago Study of Access and Choice in Education" by Professor Gary Orfield of the University of Chicago. The study contends that a minority of students in Chicago are trapped in "a fully developed cycle of inequality" which forces them to attend the "least selective" colleges, such as Northeastern Illinois University. Analysis of Orfield's conclusions about the role of the four-year colleges in perpetuating a cycle of inequality reveals them to be without corroboration.

Unfortunately, beyond reporting the average ACT scores of four-year institutions' entering freshmen, the report makes no attempt to present data about the quality of academic programs or the performance of graduates. Conventional measures of quality, such as per-capita expenditures, departmental screening standards and student characteristics, including reading levels and proficiency test scores, are simply not presented.

Some of the evidence in the report actually argues against applying the "cycle of inequality" notion to four-year institutions. For example, if approximately 25 percent of the city's high school teachers are from so-called least selective institutions, then presumably up to 75 percent of the teachers were trained at more

Ronald Williams is president of Northeastern Illinois University.

Point of view

selective institutions, including 8.4 percent who earned degrees from the University of Illinois at Urbana or Northwestern, 15.7 percent from De Paul, Loyola or Roosevelt and 13.1 percent from six other Illinois public universities.

The report does not include data on the distribution of these teachers within the city's high schools, but even allowing for uneven distribution, the sheer number of teachers from the more selective institutions demonstrates that their influence would be dominant.

According to Orfield's own report, more than half of all blacks and Hispanics receiving bachelor's degrees in the Chicago area in 1980-81 earned them at private institutions rather than at the "least selective" public institutions. If the "cycle of inequality" theory were correct, minorities would not have been able to gain access to four-year private institutions in such great measure.

Had Orfield's study included more data based on conventional measures of quality, we believe that Northeastern would have emerged as an exception to the "cycle of inequality" theory. While 59.2 percent of Northeastern's graduates teach in the city, 40.8 percent teach in suburban schools. This latter figure includes minorities who, by virtue of attending Northeastern, cannot be included in Orfield's "cycle of inequality." Only 3.1 percent of

the city's high school teachers are graduates of Northeastern.

On a final note, the Orfield study and recent statements in the press imply that the quality of Northeastern's teacher preparation program is questionable. The Orfield study makes the false assumption that admission to the university is tantamount to admission to the College of Education. This is not the case.

Northeastern's College of Education was rated as one of the top 11 teacher training programs in the United States in the National Survey of Student Teaching Programs, conducted by Northern Illinois University. In 1982, the Illinois State Teachers Certification Board conducted a review of training programs and as a result, Northeastern was the first public university in Illinois ever to receive full and unqualified approval of all of its undergraduate and graduate programs in teacher training.

Despite these reservations about the validity of Orfield's "cycle of inequality" notions at the level of four-year institutions, his report raises many substantive issues that are of grave concern to all who care about young people, the schools and society. Hence, we believe the report warrants serious consideration, which we hope will produce a concerted effort to improve the quality of instruction within the Chicago public schools.

President Ronald Williams' editorial (reprinted above) from the September 27 Chicago Tribune served as a rebuttal to recent Tribune articles that focused on a study by University of Chicago professor Gary Orfield and his undergraduate students. The Orfield study, which dealt with the quality of education for minority students in Chicago public high schools, discredited Northeastern students and graduates because some students with low ACT test scores are admitted to the university. The Orfield study insinuated that Northeastern's education graduates were less-prepared to teach than graduates of some other universities.

In addition to President Williams' editorial in the Tribune, Northeastern's response to the Orfield study was reported in the Chicago Sun-Times, the Chicago Defender, and the Lerner Newspaper chain.

FITNESS INSTRUCTOR
WORKSHOP AND
CERTIFICATION PROGRAM

Interested individuals will be traveling to Chicago this month to participate in the American College of Sports Medicine's Fitness Instructor Workshop and Certification Program. The Chicago program will be hosted by Northeastern Illinois University.

The workshop and certification program is designed to improve the knowledge and skills of individuals who conduct exercise programs with people who have controlled disease or without disease. Program participants will learn the scientific principles of exercise and physical conditioning, lifestyles behavior modification, and will be able to design safe, appropriate, and enjoyable individualized exercise programs. Individuals will receive extensive information on basic anatomy and physiology; exercise physiology, fitness assessment, screening, and health appraisal; ECG and the effect of medications on exercise responses; common injuries; and nutrition and weight control.

The workshop will be offered at Northeastern on October 22-25. For additional information, please contact Dr. George Lesmes, director of the Human Performance Laboratory and professor of health, physical education, recreation, and athletics, at extension 498.

RECREATION AND
INTRAMURAL SPORTS
PROGRAM

Physical fitness activities are among the nation's favorite pastimes. More than ever before people are seeking outlets for their free time. For this reason, Northeastern created a Recreation and Intramural Sports Program in September of 1979 for all faculty, staff, students, and alumni.

The program provides an opportunity for individuals to enjoy experiences related to their particular needs and interests. Participants may indulge in highly competitive sports or non-competitive recreational events suited to their individual capabilities. Activities are geared to team efforts, individual achievement, dual sports, and lifelong participation. Individuals are encouraged to pursue intramural sports of floor hockey, basketball, fencing, volleyball, badminton, tennis, table tennis, swimming, and weight training.

In order to meet changing societal needs, new activities are always being added to the program. Individuals may now participate in aquadynamics and women's conditioning. Aquadynamics are a series of exercises designed to promote strength and endurance. Women's conditioning is a program of stretching, calisthenics, and mild aerobics for fitness.

Special events are also an important part of the program. These activities are held at various times of the year and have included Alumni Day, Faculty and Staff Family Day, Mini-Marathons, Sports Clinics, Relay Races, and Turkey Trots.

Each trimester, organized team competitions are held for men and women. Some of these events are coeducational. Individuals who participate on a winning team in an intramural event receive a special award. During the course of the year, approximately 15 intramural activities are held in which some 1645 individuals participate.

Because leisure time activities are often times for family and friends to come together, the university has extended its services to include special guest and alumni passes. Eligibility for participation in the program is based on sponsorship by a member of the university community.

For additional information, please contact the Recreation and Intramural Sports Program at extension 481.

SPANISH DANCE IN CONCERT

Dame Libby Komaiko Fleming's Ensemble Espanol will present "Spanish Dance in Concert" at Northeastern on Friday, October 26, Saturday, October 27, and Saturday, November 3, at 8:00 p.m. in the university auditorium. The concerts will feature the dances of Spain, authentically costumed from the Renaissance to the Twentieth Century in the Classical, Regional, and Flamenco styles. Joining Fleming, the ensemble director, will be guest artists Flamenco singer Maria Elena "La Cordobesa," and Flamenco guitarists Greg Wolfe and Luis "El Primitivo."

General admission is \$6.00; Northeastern faculty, staff, and children under 12 - \$5.00; and Northeastern students with an I.D. - Free.

The Ensemble Espanol will also feature a fall workshop of master classes in Escuela Bolera, Neo-Classical, Regional, and Flamenco dance styles. The classes will be taught by Fleming and members of the ensemble on Friday, November 16, Saturday, November 17, Friday, December 14, and Saturday, December 15.

For additional information on the concerts or the workshops, please call the Department of Music Concert Office at extension 544.

TWO PROFESSORS RECEIVE AWARD

Ruth Goran, assistant professor of accounting, business law, and finance, and Diane L. Petersen, assistant professor of economics, were awarded 1984 Bankers Life and Casualty Company Faculty Fellowships. The fellowships give faculty members the opportunity to pursue research in their academic fields of study.

Goran is using her foundation fellowship to complete research for a federal tax reference manual. She is the co-author of the recently published Illinois Tax Guide, and author of State Tax Liability and Compliance Manual and Illinois Tax Course.

Petersen will use her award to study the factors that influence change in employment levels of industries in Metropolitan Chicago. She has conducted research on parental contributions for post-secondary education for the U.S. Office of Education and on employment forecasting models for the City of Chicago Mayor's Office of Manpower.