

11-15-1984

FYI- Nov. 15, 1984

University Relations Staff

Follow this and additional works at: <https://neiudc.neiu.edu/fyi>

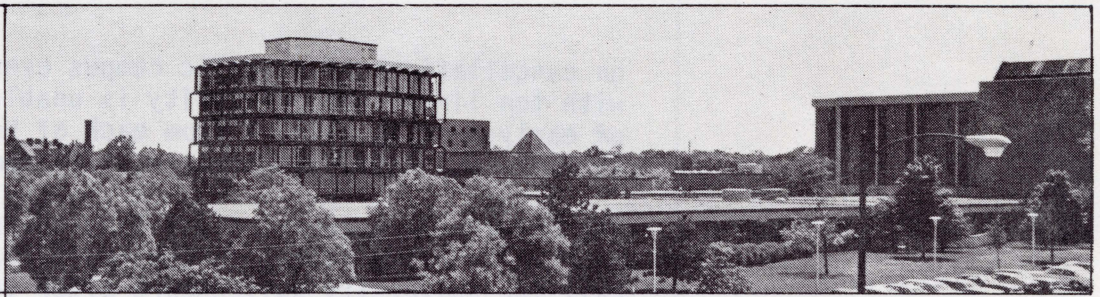
Recommended Citation

Staff, University Relations, "FYI- Nov. 15, 1984" (1984). *FYI*. 67.
<https://neiudc.neiu.edu/fyi/67>

This Book is brought to you for free and open access by the Publications at NEIU Digital Commons. It has been accepted for inclusion in FYI by an authorized administrator of NEIU Digital Commons. For more information, please contact neiudc@neiu.edu.



November 15, 1984



FYI is published by University Relations, Northeastern Illinois University, for university faculty and staff members. Please send information to Terry Katz, University Relations, C-437.

SNOW CLOSING INFORMATION

As Chicagoans brace for the Winter of 1984-85, Northeastern officials have prepared the university's plan of action in the event heavy snow falls. While Chicagoans experienced one of our coldest winters last year, we were fortunate in that the amount of snow that fell was minimal. In the event the city is covered by heavy snows this year, Northeastern will be prepared to meet the challenge.

Parking Lots

As a commuter school, accessible parking lots are vital to the school's operation. During periods of snowfall, the public safety office requests faculty and staff members to park only in the lots that have been cleared, otherwise, your car might be plowed in. If you must leave your car on campus overnight, you should leave it in the "D" lot (next to public safety). You should register the car and leave the keys with public safety in case your car must be moved.

Listen, Don't Dial

In the event that Northeastern is forced to close this winter because of inclement weather, notification of the closing will be announced on the following Chicago-area radio and television stations:

WBBM-AM (780 AM)
WCFL-AM (1000 AM)
WEDC-AM (1240 AM)
WGN-AM (720 AM)
WIND-AM (560 AM)
WJJD-AM (1160 AM)
WLS-AM (890 AM)
WMAQ-AM (670 AM)
WVON-AM (1390 AM)
WAGO-FM (106 FM)
WBBM-FM (96.3 FM)

WBEZ-FM (91.5 FM)
WBMX-FM (102.7 FM)
WCLR-FM (101.9 FM)
WFMT-FM (98.7 FM)
WFYR-FM (103.5 FM)
WGCI-FM (107.5 FM)
WLS-FM (94.7 FM)
WOJO-FM (105.1 FM)
WUSN-FM (99 FM)
WXRT-FM (93.1 FM)
WZRD-FM (88.3 FM)

WBBM-TV (Channel 2)
WMAQ-TV (Channel 5)
WLS-TV (Channel 7)
WGN-TV (Channel 9)
WCIU-TV (Channel 26)
WFLD-TV (Channel 32)

A ten-line bank of recorded messages at the university's main number (583-4050) will provide callers with information

on cancellations of specific campus events. However, even with ten lines, the university is unable to handle a flood of early-morning callers from each of Northeastern's 10,000 students and 1,000 faculty and staff members.

The university encourages all faculty and staff members with later classes to listen to the radio, watch television, or call the university switchboard after 10:00 a.m. If members of the university community only wish to know if school is cancelled, they are asked to listen to the radio or watch television.

IN THE MEDIA

AHMED A. FAREED, dean of the College of Education, appeared on WBBM-TV's (Channel 2) "Common Ground" on Saturday, October 27. Fareed discussed the controversial "Orfield Report" with Gary Orfield, professor at the University of Chicago.

"Recently, three of America's finest wrestlers, medal winners in the 1984 Olympics, pushed themselves to the limits of endurance in exercise physiological tests at the Human Performance Laboratory at Northeastern," noted the Chicago Tribune on Sunday, September 30. Hopefully, the results of the tests will help improve the next generation of Olympic wrestlers and benefit disabled persons who have lost the use of their legs through amputation, poor circulation, or orthopedic problems. GEORGE LESMES is director of the laboratory.

J. FRED MAC DONALD, professor of history, was a guest columnist for Advertising Age on Thursday, September 13. MacDonald's article was entitled "Radio - The Medium is Alive and Well in the Age of Video."

MARY ANN SCHWARTZ, professor of sociology, contributed to an article on "Office Romance" in the Glencoe News on Thursday, September 27.

HONORS AND ACTIVITIES

BERT ABELL, coordinator of student teaching, presented a workshop on "Identifying Motivational Strategies for Students and Parents" at the Institute for the Training of Master Teachers on Tuesday, October 2, in Highland Park.

DOLORES NICOSIA, professor of music, was awarded certification as a facilitator in the therapeutic use of music and guided imagery from the Institute of Consciousness and Music. She also presented a program on "Discovering Inner Prayer Through the Arts" at a weekend retreat at the Cenacle in Rochester, New York, during September.

ANGELINA PEDROSO, associate professor of foreign languages and literatures, was selected to serve as a member of the board of directors of the City Colleges of Chicago Foundation.

SALME H. STEINBERG, chairperson and professor of history, has written an article on "Twentieth Century United States Corporate Philanthropy at Work," which was recently published in Business and Economic History.