

1-16-1985

FYI- Jan. 16, 1985

University Relations Staff

Follow this and additional works at: <https://neiudc.neiu.edu/fyi>

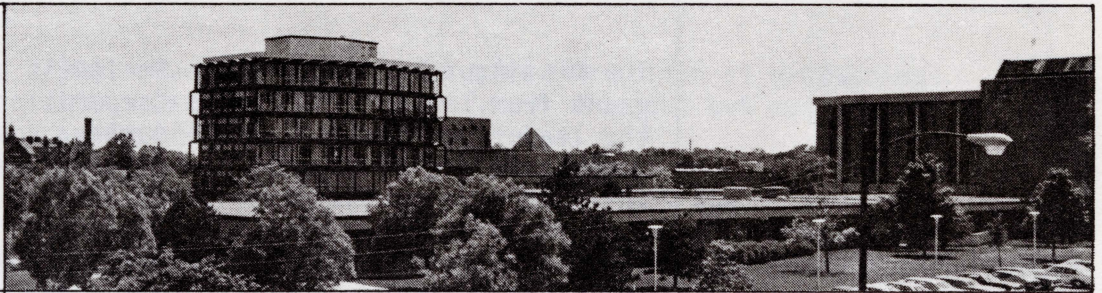
Recommended Citation

Staff, University Relations, "FYI- Jan. 16, 1985" (1985). *FYI*. 70.
<https://neiudc.neiu.edu/fyi/70>

This Book is brought to you for free and open access by the Publications at NEIU Digital Commons. It has been accepted for inclusion in FYI by an authorized administrator of NEIU Digital Commons. For more information, please contact neiudc@neiu.edu.



FOR YOUR INFORMATION



January 16, 1985

FYI is published by University Relations, Northeastern Illinois University, for university faculty and staff members. Please send information to Terry Katz, University Relations, C-437.

KLUTZNICK TO SPEAK ON "CHICAGO'S HERITAGE OF COMMERCE"

Philip M. Klutznick, former United States Secretary of Commerce, will discuss "Chicago's Heritage of Commerce," on Thursday, January 24, at 11:00 a.m. in the commuter center, room 217. This is the third program, sponsored by Inland Real Estate Corporation and presented by Northeastern Illinois University and the City Club of Chicago in their "Distinguished Lecture-series Series: Chicago's Heritage of Achievement." Following the program, the speaker will accept questions from the audience.

A native of Kansas City, Klutznick received his law degree from Creighton University in 1930 and served as an assistant corporation counsel and aide to the United States attorney in Omaha. He was commissioner of the Federal Public Housing Authority under Presidents Franklin D. Roosevelt and Harry S. Truman. Later, he served as United States Ambassador to the United Nations Economic and Social Council during President John F. Kennedy's administration. During this period, he was the chief economic advisor to Ambassador Adlai Stevenson and served in state housing posts when Stevenson was governor of Illinois.

Klutznick began his career in real estate in 1946 with the development of Park Forest, a suburb 30 miles south of Chicago and one of the nation's first planned communities. The town was regarded by urban experts as a model of intelligent planning. In 1968, Klutznick founded the Chicago-based Urban Investment and Development Company. Two years later, he sold the firm to Aetna Life and Casualty Company for more than \$52 million. His latest major project was Water Tower Place, a 74-story, \$195 million building on Chicago's North Michigan Avenue.

Active in numerous Jewish organizations, Klutznick was head of the American Housing Commission for Israel in 1949-50 at the request of the Israeli prime minister. Later, he became chairman of the governing board and president of the World Jewish Congress. He has also served on the board of directors of Creighton and Roosevelt Universities, the Lyric Opera of Chicago, and the National Jewish Welfare Board. He is one of the owners of the Chicago Bulls Basketball Team and is a member of the board of directors of the Chicago Association of Commerce and Industry.

The next lecturer in the series will be Dempsey Travis, author and civic leader, on Tuesday, February 19. He will speak on "Chicago's Heritage of Jazz."



REQUEST FOR NOMINATIONS

The Distinguished Lectureship Series is underwritten by a grant from Inland Real Estate Corporation and designed for the leaders in business and industry, community organizations, government and education, and citizens of Chicago and the surrounding suburban communities.

In accordance with board of governors policy, the Committee for Honorary Degrees will be soliciting nominations for candidates to be awarded either a Doctor of Humane Letters or a Doctor of Laws degree at Northeastern's 1986 commencement. All faculty, staff, students, and alumni are invited and encouraged to nominate individuals whose achievements make them worthwhile candidates for this distinction. Criteria for candidates are as follows:

- 1) Persons eligible to receive these degrees shall have achieved major distinction at the state or national levels in academic, literary, business, professional, or public service endeavors.
- 2) Persons currently holding elective or appointive positions in local or state government, including Board of Governors of State Colleges and Universities and Illinois Board of Higher Education members and employees, are not eligible.

After screening nominations, the committee will make its recommendation to President Ronald Williams and with the board's approval, the recipient will be invited to participate in the commencement at which time the degree will be awarded. No degree may be awarded in absentia.

For additional information on how to submit nominations, please contact Ms. Terri Rothstein at extension 286.

PHON-A-THON

Volunteers are needed for Northeastern Illinois University Foundation's annual Phon-A-Thon. Starting the middle of February through March, volunteers will meet on campus, weekday evenings, to telephone alumni. Contributions will help Northeastern meet its commitment to quality education. Last year, 185 volunteers raised over \$21,000.

Each evening begins with a free dinner at 6:00 p.m., an orientation at 6:45 p.m., and calling between 7:00 - 9:00 p.m. Prizes such as dinner or theatre tickets for two will be awarded nightly to the most successful callers.

For additional information, please contact Tony Wiszowaty, Phon-A-Thon coordinator, at extension 273.

HUMAN SERVICES CHANGES
NAME AND DEGREE

The Board of Higher Education at its December 4, 1984, meeting approved Northeastern Illinois University's request to change the Department of Human Services to the Department of Social Work. In addition, they approved the establishment of a bachelor of arts in social work. The department will begin granting the bachelor of arts degree in April

1985. Current majors will have the option of graduating with a bachelor of arts in human services but must notify the department immediately.

There has also been work on a self-study application for accreditation from the Council on Social Work Education which can now be submitted after some final editing and revision.

For additional information, please contact the Department of Social Work at extension 611 or 612.

BLACK CREATIVITY AT MUSEUM

During February, which is Black History Month, the Museum of Science and Industry will present "Black Creativity," a program of special exhibits on Black culture, a juried art show, and a series of Saturday and Sunday lectures/performances on Black literary life in Chicago, its writers, and Black music.

At the Sunday series entitled "Chicago Music: A Continuing Tradition," ELKIN SITHOLE, professor of inner city studies education, will be the guest speaker/performer on Sunday, February 10, at 1:30 p.m. He will present the "Origins of Afro-American Music."

At the Saturday series entitled "Black Writers in Chicago," BETTYE PARKER-SMITH, director of the board of governors/bachelor of arts program, will participate in a round table discussion on Black literary life in Chicago. The discussion will take place on Saturday, February 23, at 10:30 a.m. Both programs will be presented in the museum's Little Theatre.

IN THE MEDIA

MARY LOUISE BURGER, professor of early childhood education, was highlighted in an article on "Kids' Reading: Reinforcing Both Book and Bond" in the Lerner Newspapers on Tuesday, December 18. "In order for children to build good language skills and become more comfortable with the English language itself, parents should read to their children," Burger said. "Those who do will find they can build a close bond with their children and help give them more confidence in reading and speaking."

The opera "A Christmas Carol," composed by RONALD COMBS, professor of music, was heard on WFMT-FM (98.7) on Sunday, December 23. "A Christmas Carol" premiered at Northeastern five years ago. The broadcast version, which was taped in the university's auditorium, featured many Northeastern students. It has become an annual programming event at WFMT.

Northeastern's Human Performance Laboratory was highlighted in an article on "Keeping Fit Indoors Beats the Arctic Chill" in the Chicago Tribune on Friday, January 4. "It's not the mode of exercise that's important, it's the intensity," said GEORGE LESMES, director of the lab. "All it takes is about 30 minutes at a time, three times a week, and just enough vigor to raise the heartbeat to your age-adjusted target rate," said Lesmes.

LIBBY ADLER MAGES was a guest on "Newstalk" on WFLD-TV (Channel 32), Friday, January 4, and Saturday, January 5. She discussed the marketing of theatrical productions. Mages is assistant professor of speech and performing arts and a partner in Maven Productions, a theater marketing consultation company currently working with "E/R" at the Forum Theatre.

THERESE SCHUEPFER, assistant professor of psychology, was a guest on "Newstalk" on WFLD-TV (Channel 32) on Saturday, December 15. She discussed children and Christmas lists.

ANDERSON THOMPSON, associate professor of inner city studies education, was interviewed by WBBM-TV (Channel 2) on Thursday, December 13. He discussed the protests against South Africa and the American firms doing business there.

KENNETH ADDISON, associate professor of educational foundations, gave a lecture on "Ethnic Differences: How They Affect Discipline, Learning, and Social Interaction in the Schools" at Longfellow School in Chicago on Wednesday, November 28.

DONN BAILEY, director of the center for inner city studies, participated in a discussion on the implications of the 1992 Chicago World's Fair on the Black community at a meeting hosted by the Chicago Association of Black Journalists on Thursday, November 8.

ELLEN CANNON, associate professor of political science, gave a speech on "The Political Science of Jewish Politics" at Congregation Rodfei Zedek in Chicago on Sunday, December 16.

SALLY A. HASTINGS, assistant professor of history, gave a speech on "Western Models and Japanese Reality: Women, Charity, and Social Work in Japan, 1868-1945" at the Chicago Area Women's History Conference on Saturday, December 8, at the Newberry Library in Chicago.

NOAH INBODY, associate professor of counselor education, presented a seminar on "Understanding the Men in Your Life" at Harper College in Palatine on Saturday, December 1.

ELYSE MACH PEIRICK, associate chairperson and professor of music, presented a lecture on "Great Pianists of Today - A Comparison of Thought and Viewpoint" at the 20th anniversary festival of the American Liszt Society. The festival, which featured 35 international scholars, was held at the Peabody Institute of Johns Hopkins University in Baltimore, Maryland, during November.

ROBERT STARKS, associate professor of inner city studies education, was one of the presenters at a workshop on "Psychopolitical Problems Related to Afro-Americans" at the Black Student Psychological Association in Chicago on Wednesday, October 31.

HONORS AND ACTIVITIES