

10-1-1997

Press Releases - October-December 1997

Northeastern Illinois University University Relations

Follow this and additional works at: <https://neiudc.neiu.edu/pressreleases>

Recommended Citation

University Relations, Northeastern Illinois University, "Press Releases - October-December 1997" (1997).
Press Releases. 112.
<https://neiudc.neiu.edu/pressreleases/112>

This Book is brought to you for free and open access by the NEIU Archives at NEIU Digital Commons. It has been accepted for inclusion in Press Releases by an authorized administrator of NEIU Digital Commons. For more information, please contact neiudc@neiu.edu.



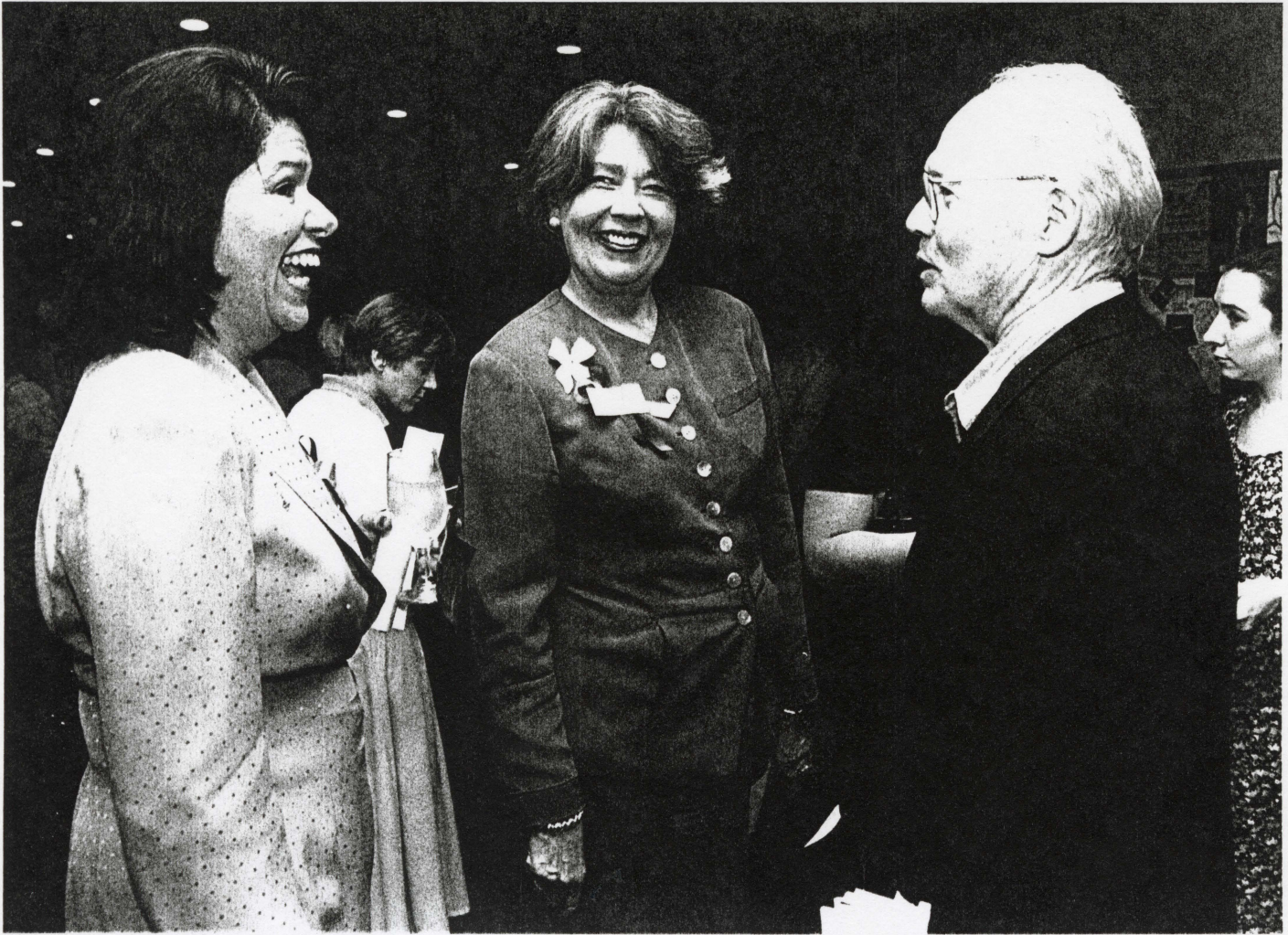
NORTHEASTERN ILLINOIS UNIVERSITY
October 1997

Contact: Elaine Specter
773/794-2912

*header
nading
hermer/Times*

(L-R) Salme H. Steinberg, Northeastern Illinois University (NEIU) president, and James Barushok, professor of Speech and Performing Arts at NEIU, and Mrs. Fern Barushok (West Ridge residents) share memories at the recent 35th anniversary celebration of the university's Stage Center Theatre. Members of NEIU's music department performed at the gala reception, and the 1997-98 selection of plays was announced. The courtroom drama, "A Case of Libel," opens the season on October 23.

Northeastern Illinois University is a comprehensive, state supported commuter institution in Chicago serving more than 10,000 students.



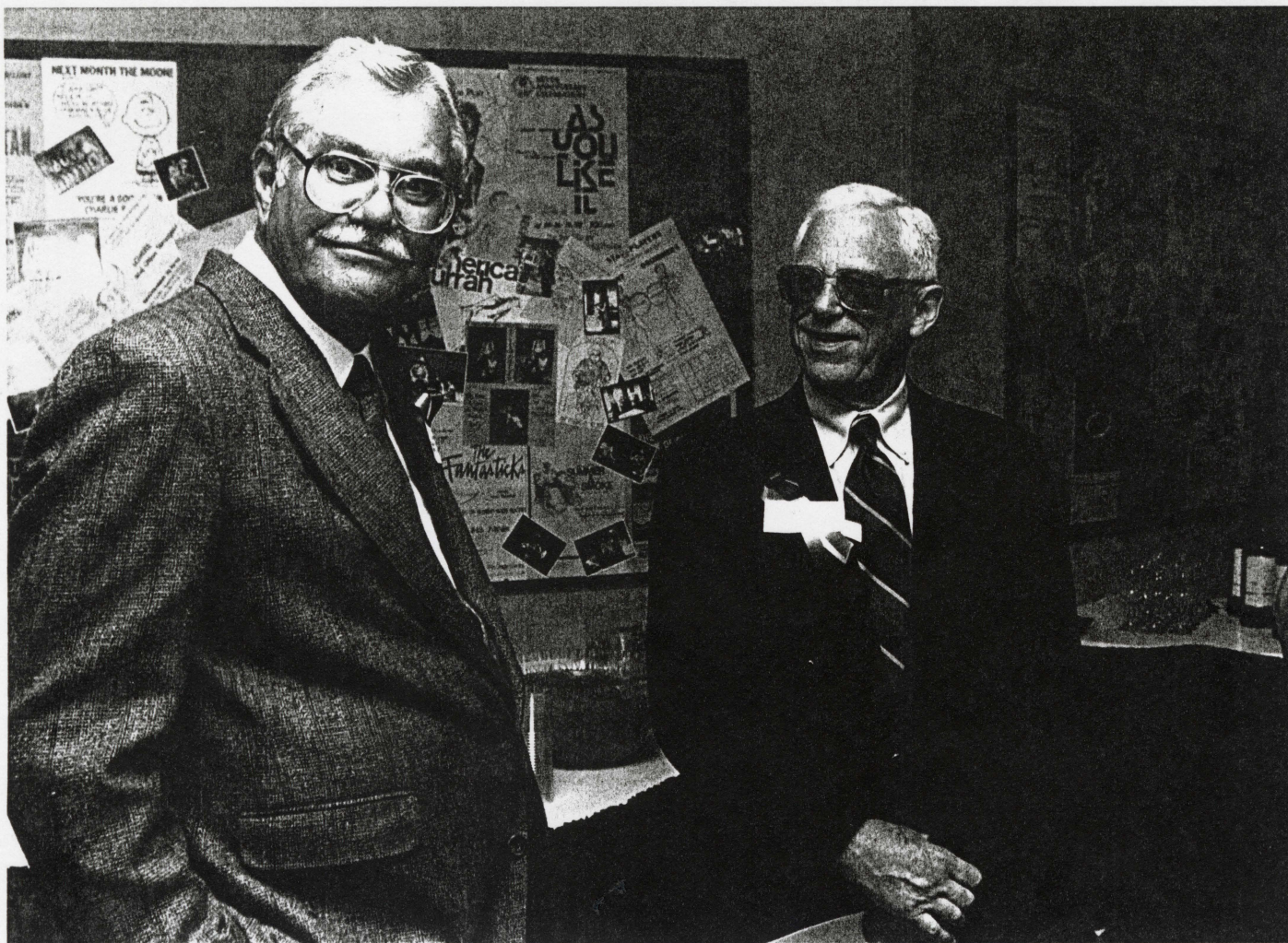
NORTHEASTERN ILLINOIS UNIVERSITY
October 1997

Contact: Elaine Specter
773/794-2912

(L-R) Estela R. López, Northeastern Illinois University (NEIU) provost (Lakeview resident), Salme H. Steinberg, NEIU president, and Richard Hesler, NEIU professor of Speech and Performing Arts, share memories at the recent 35th anniversary celebration of the university's Stage Center Theatre. Members of NEIU's music department performed at the gala reception, and the 1997-98 selection of plays was announced. The courtroom drama, "A Case of Libel," opens the season on October 23.

Northeastern Illinois University is a comprehensive, state supported commuter institution in Chicago serving more than 10,000 students.

Skylingherner



NORTHEASTERN ILLINOIS UNIVERSITY
October 1997

Contact: Elaine Specter
773/794-2912

(L-R) James Barushok, professor of Speech and Performing Arts at Northeastern Illinois University (NEIU) and Wallace Smith, Executive Director of the Illinois Theater Association, share memories at the recent 35th anniversary celebration of the university's Stage Center Theatre. Members of NEIU's music department performed at the gala reception, and the 1997-98 selection of plays was announced. The courtroom drama "A Case of Libel," opens the season on October 23.

Northeastern Illinois University is a comprehensive, state supported commuter institution in Chicago serving more than 10,000 students.

*performing
Daily Herald
Reader*



NORTHEASTERN ILLINOIS UNIVERSITY
October 1997

Contact: Elaine Specter
773/794-2912

*herner
Near North NEWS*

(L-R) Mrs. Fern Barushok, spouse of Northeastern Illinois University (NEIU) professor of Speech and Performing Arts, James Barushok, shares memories with retired NEIU professors of Speech and Performing Arts, Bernard Brommel and Durward Redd, at the recent 35th anniversary celebration of the university's Stage Center Theatre. Members of NEIU's music department performed at the gala reception, and the 1997-98 selection of plays was announced. The courtroom drama, "A Case of Libel," opens the season on October 23.

Northeastern Illinois University is a comprehensive, state supported commuter institution in Chicago serving more than 10,000 students.



NORTHEASTERN ILLINOIS UNIVERSITY
October 1997

Contact: Elaine Specter
773/794-2912

*Evanston Review
pioneer press*

(L-R) Estela R. López, Northeastern Illinois University (NEIU) provost; Salme H. Steinberg, NEIU president (Evanston resident); and Richard Hesler, NEIU professor of Speech and Performing Arts (Riverwoods resident), share memories at the recent 35th anniversary celebration of the university's Stage Center Theatre. Members of NEIU's music department performed at the gala reception, and the 1997-98 selection of plays was announced. The courtroom drama, "A Case of Libel," opens the season on October 23.

Northeastern Illinois University is a comprehensive, state supported commuter institution in Chicago serving more than 10,000 students.



La Raza

NORTHEASTERN ILLINOIS UNIVERSITY
October, 1997

Contact: Susan Namest
(773) 794-6676

Two Northeastern Illinois University students try out a computer at the university's seventh and newest computer lab which opened with a reception on October 15. The lab has advanced assistive technology equipment for blind or visually impaired students as well as stations set up for students with wheelchairs. In addition, a multi-media room contains special equipment providing video and sound for both intra-net and Internet communications. This newest facility increases the total number of PC's available to students to over 300.



NORTHEASTERN ILLINOIS UNIVERSITY
October, 1997

Contact: Susan Namest
(773) 794-6676

Journal Topics

Northeastern Illinois University students try out computers at the university's seventh and newest computer lab which opened with a reception on October 15. The lab has advanced assistive technology equipment for blind or visually impaired students as well as stations set up for students with wheelchairs. In addition, a multi-media room contains special equipment providing video and sound for both intra-net and Internet communications. This newest facility increases the total number of PC's available to students to over 300.



Chicago Crusader

NORTHEASTERN ILLINOIS UNIVERSITY

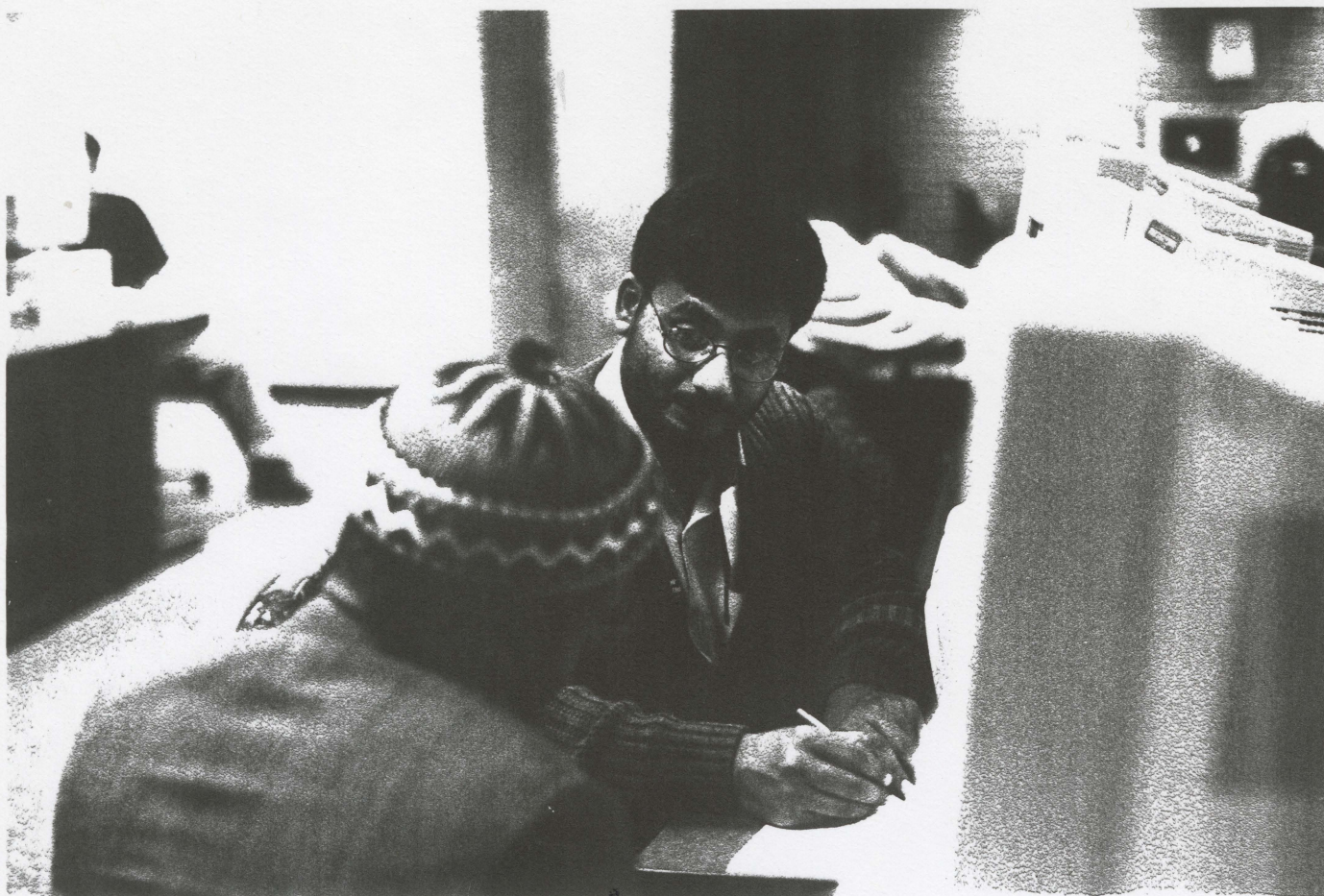
Contact: Susan Namest

October, 1997

(773) 794-6676

(L-R Standing) Estela Lopez, Ph.D., Provost of Northeastern Illinois University (NEIU); Bill Moressi, Ph.D., Director of Academic Computing; Adeeb Asad, Student Government President; and Salme H. Steinberg, Ph.D., NEIU President. Moressi shakes Asad's hand at the university's seventh and newest computer lab which opened with a reception on October 15. The lab has advanced assistive technology equipment for blind or visually impaired students as well as stations set up for students with wheelchairs. In addition, a multi-media room contains special equipment providing video and sound for both intra-net and Internet communications. This newest facility increases the total number of PC's available to students to over 300.

Northeastern Illinois University is a state-supported commuter university serving more than 10,000 students. It is located at 5500 North St. Louis Avenue in Chicago.



India Tribune

NORTHEASTERN ILLINOIS UNIVERSITY
October, 1997

Contact: Susan Namest
(773) 794-6676

Two Northeastern Illinois University students try out a computer at the university's seventh and newest computer lab which opened with a reception on October 15. The lab has advanced assistive technology equipment for blind or visually impaired students as well as stations set up for students with wheelchairs. In addition, a multi-media room contains special equipment providing video and sound for both intra-net and Internet communications. This newest facility increases the total number of PC's available to students to over 300.

Northeastern Illinois University is a state-supported commuter university serving more than 10,000 students. It is located at 5500 North St. Louis Avenue in Chicago.



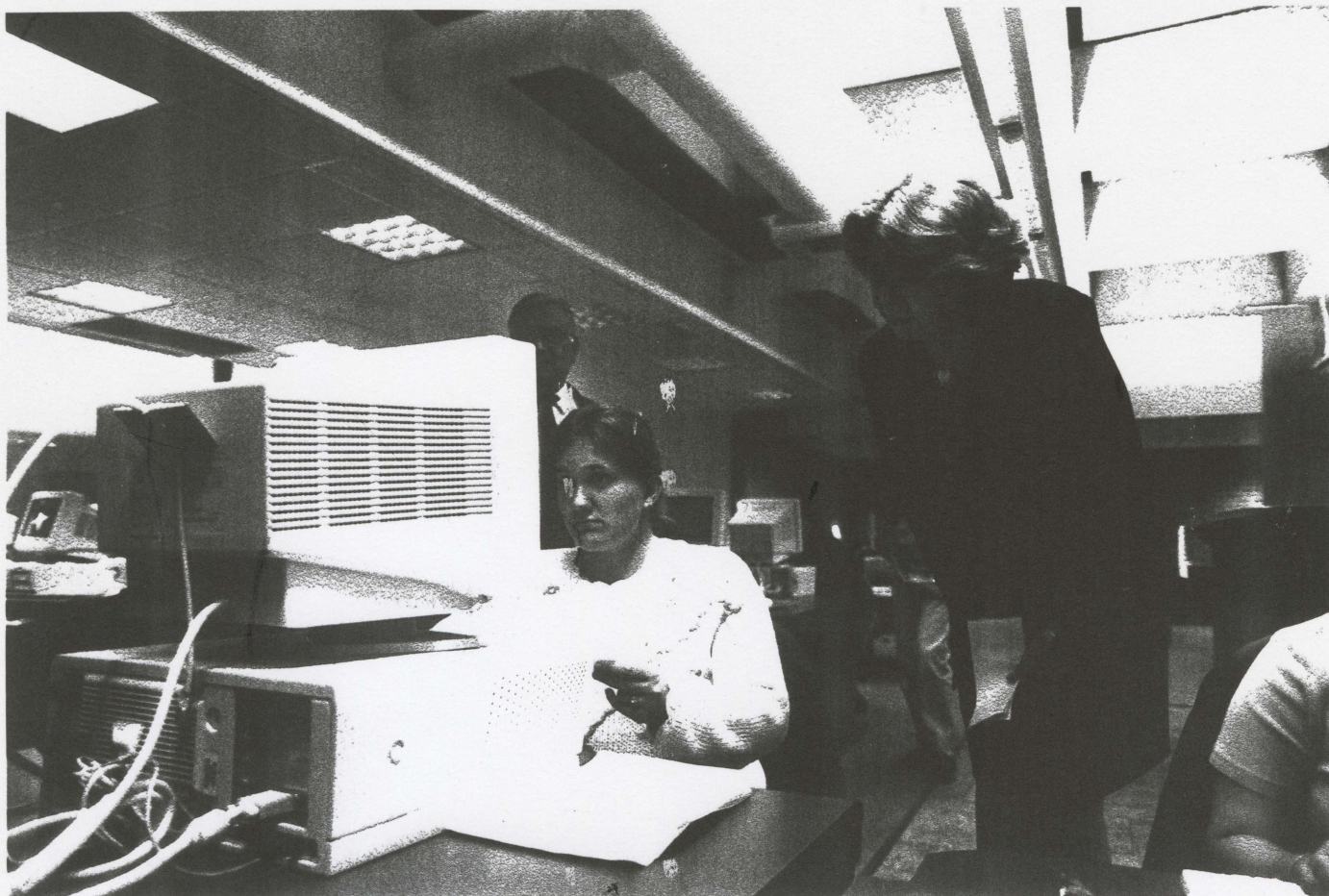
Chicago Defender

NORTHEASTERN ILLINOIS UNIVERSITY
October, 1997

Contact: Susan Namest
(773) 794-6676

(Left, standing) Dan Locke, student lab consultant at Northeastern Illinois University, works with students who are trying out a computer in the university's seventh and newest computer lab which opened with a reception on October 15. The lab has advanced assistive technology equipment for blind or visually impaired students as well as stations set up for students with wheelchairs. In addition, a multi-media room contains special equipment providing video and sound for both intra-net and Internet communications. This newest facility increases the total number of PC's available to students to over 300.

Northeastern Illinois University is a state-supported commuter university serving more than 10,000 students. It is located at 5500 North St. Louis Avenue in Chicago.



Evanston Review

NORTHEASTERN ILLINOIS UNIVERSITY
October, 1997

Contact: Susan Namest
(773) 794-6676

Salme H. Steinberg, Ph.D., President of Northeastern Illinois University, observes a student trying out a computer at the university's seventh and newest computer lab which opened with a reception on October 15. The lab has advanced assistive technology equipment for blind or visually impaired students as well as stations set up for students with wheelchairs. In addition, a multi-media room contains special equipment providing video and sound for both intra-net and Internet communications. This newest facility increases the total number of PC's available to students to over 300.

Northeastern Illinois University is a state-supported commuter university serving more than 10,000 students. It is located at 5500 North St. Louis Avenue in Chicago.



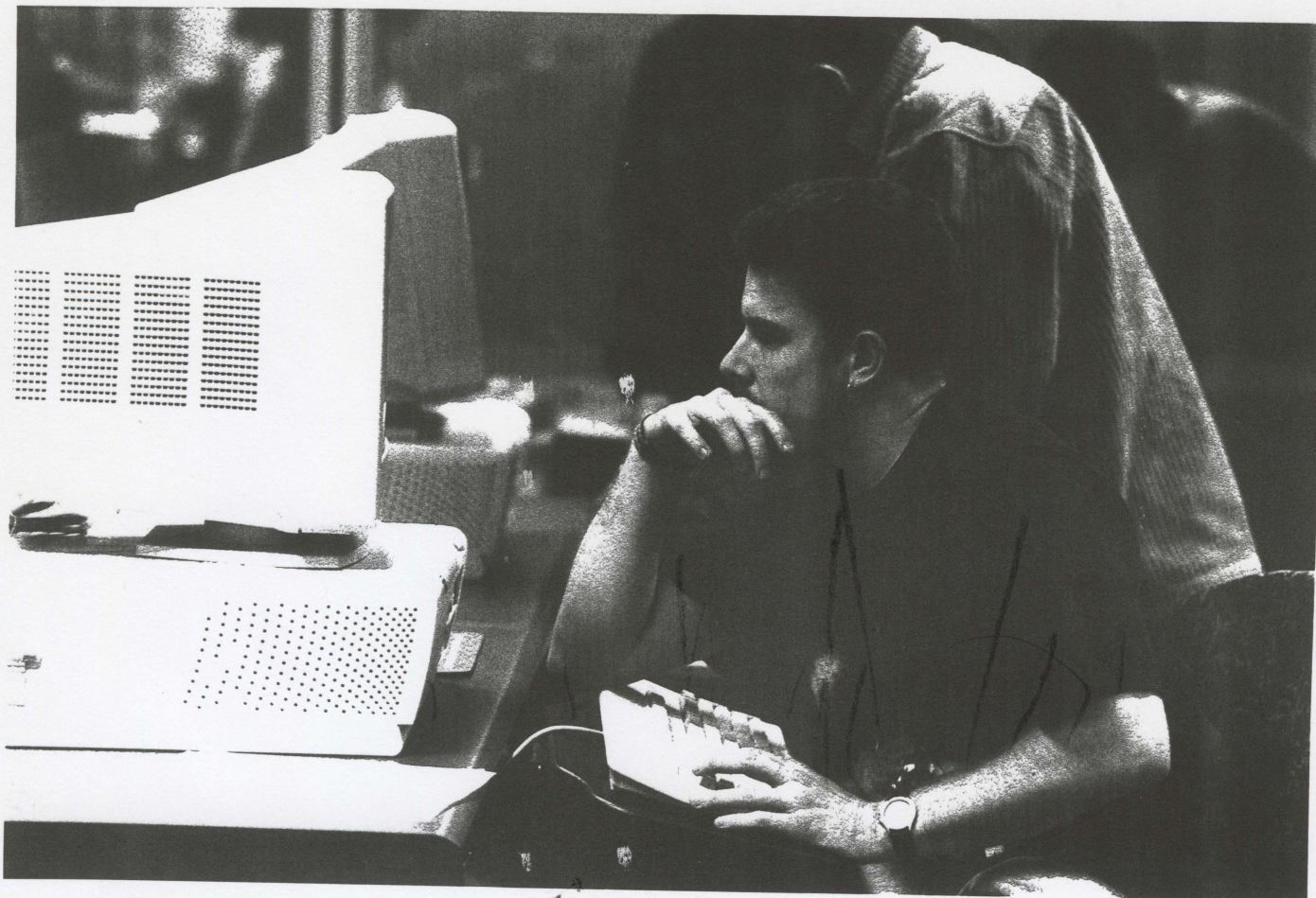
NORTHEASTERN ILLINOIS UNIVERSITY
October, 1997

Near North News

Contact: Susan Namest
(773) 794-6676

Northeastern Illinois University students try out computers at the university's seventh and newest computer lab which opened with a reception on October 15. The lab has advanced assistive technology equipment for blind or visually impaired students as well as stations set up for students with wheelchairs. In addition, a multi-media room contains special equipment providing video and sound for both intra-net and Internet communications. This newest facility increases the total number of PC's available to students to over 300.

Northeastern Illinois University is a state-supported commuter university serving more than 10,000 students. It is located at 5500 North St. Louis Avenue in Chicago.



Inside Pub.

NORTHEASTERN ILLINOIS UNIVERSITY
October, 1997

Contact: Susan Namest
(773) 794-6676

Northeastern Illinois University students try out computers at the university's seventh and newest computer lab which opened with a reception on October 15. The lab has advanced assistive technology equipment for blind or visually impaired students as well as stations set up for students with wheelchairs. In addition, a multi-media room contains special equipment providing video and sound for both intra-net and Internet communications. This newest facility increases the total number of PC's available to students to over 300.

Northeastern Illinois University is a state-supported commuter university serving more than 10,000 students. It is located at 5500 North St. Louis Avenue in Chicago.



River North

NORTHEASTERN ILLINOIS UNIVERSITY
October, 1997

Contact: Susan Namest
(773) 794-6676

Northeastern Illinois University students try out computers at the university's seventh and newest computer lab which opened with a reception on October 15. The lab has advanced assistive technology equipment for blind or visually impaired students as well as stations set up for students with wheelchairs. In addition, a multi-media room contains special equipment providing video and sound for both intra-net and Internet communications. This newest facility increases the total number of PC's available to students to over 300.

Northeastern Illinois University is a state-supported commuter university serving more than 10,000 students. It is located at 5500 North St. Louis Avenue in Chicago.



Nadig

NORTHEASTERN ILLINOIS UNIVERSITY
October, 1997

Contact: Susan Namest
(773) 794-6676

Northeastern Illinois University students try out computers at the university's seventh and newest computer lab which opened with a reception on October 15. The lab has advanced assistive technology equipment for blind or visually impaired students as well as stations set up for students with wheelchairs. In addition, a multi-media room contains special equipment providing video and sound for both intra-net and Internet communications. This newest facility increases the total number of PC's available to students to over 300.

Northeastern Illinois University is a state-supported commuter university serving more than 10,000 students. It is located at 5500 North St. Louis Avenue in Chicago.



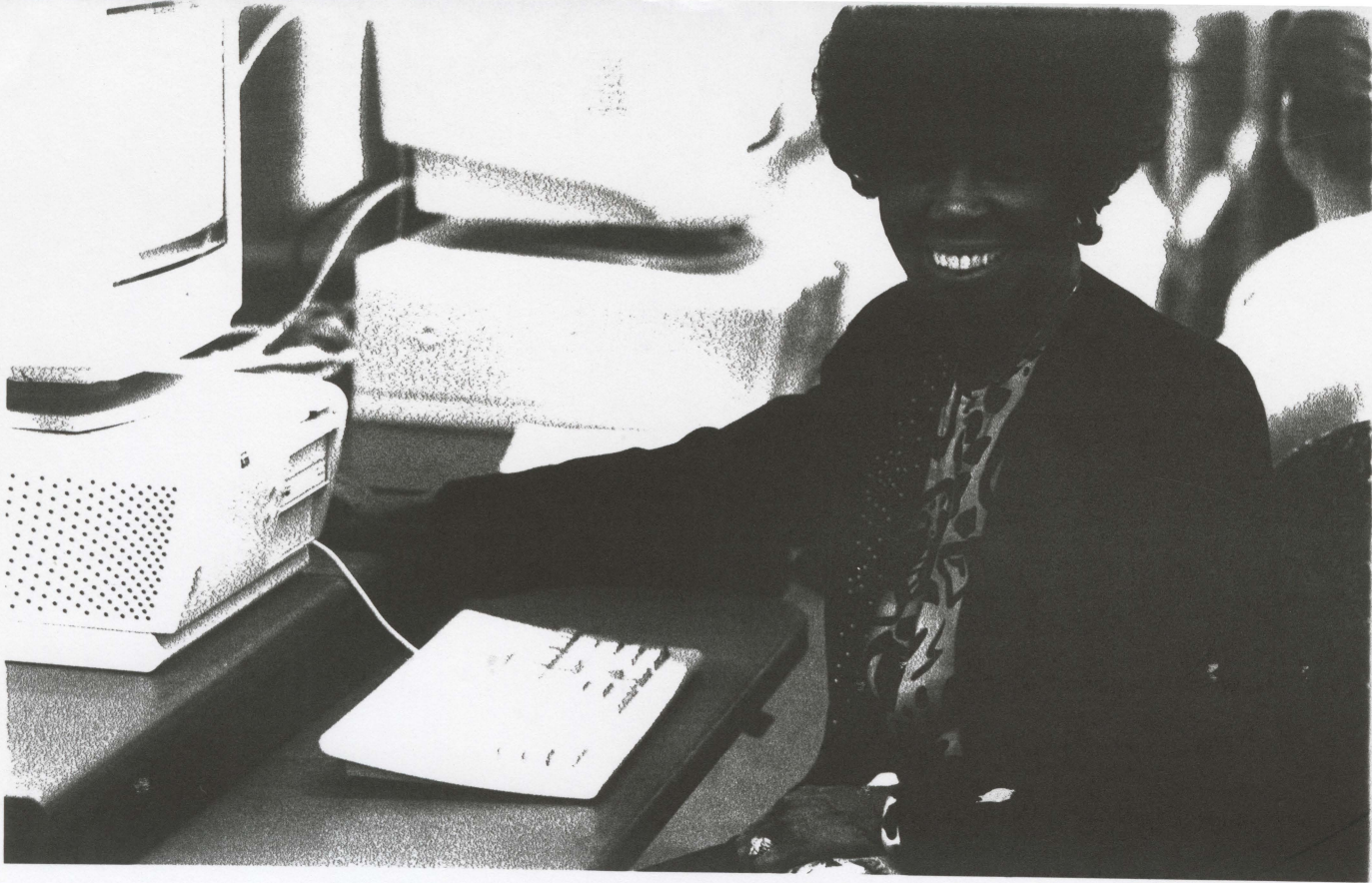
Leader and Post

NORTHEASTERN ILLINOIS UNIVERSITY
October, 1997

Contact: Susan Namest
(773) 794-6676

Two Northeastern Illinois University students try out a nova-stationed computer at the university's seventh and newest computer lab which opened with a reception on October 15. The lab has advanced assistive technology equipment for blind or visually impaired students as well as stations set up for students with wheelchairs. In addition, a multi-media room contains special equipment providing video and sound for both intra-net and Internet communications. This newest facility increases the total number of PC's available to students to over 300.

Northeastern Illinois University is a state-supported commuter university serving more than 10,000 students. It is located at 5500 North St. Louis Avenue in Chicago.



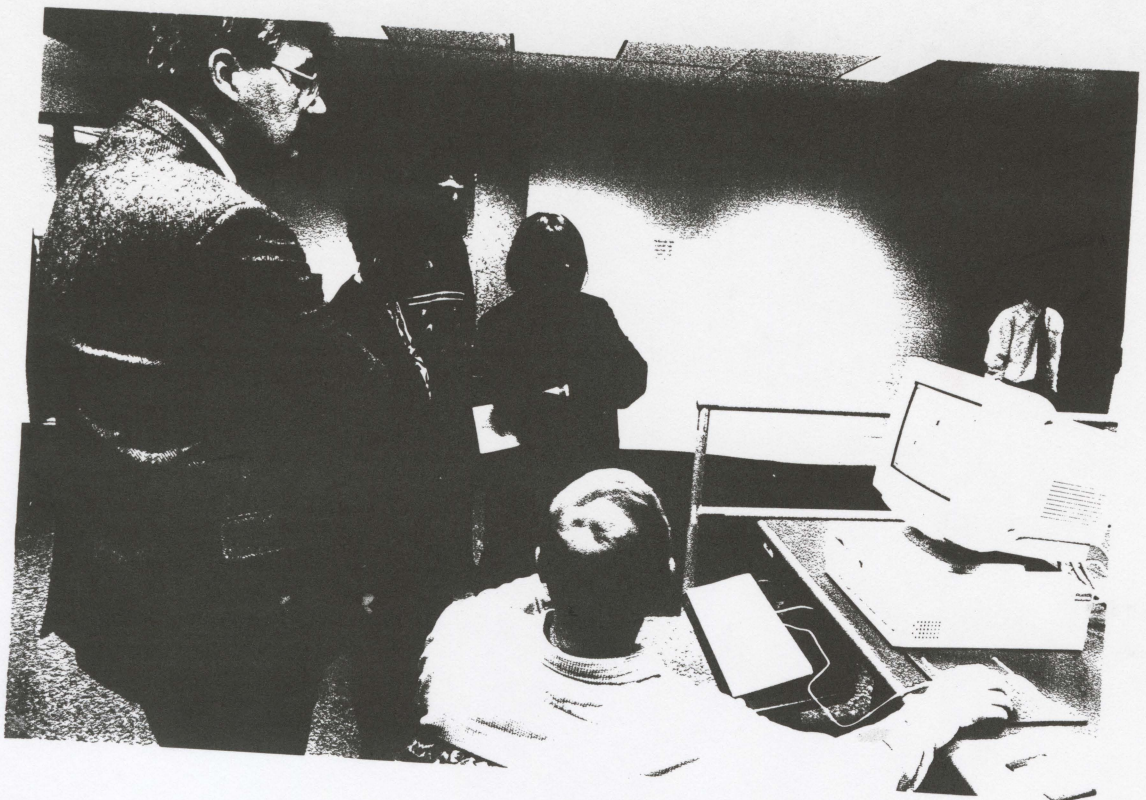
Hyde Park Herald

NORTHEASTERN ILLINOIS UNIVERSITY
October, 1997

Contact: Susan Namest
(773) 794-6676

Wilma Sutton, Executive Assistant to the President of Northeastern Illinois University, tries out a computer at the university's seventh and newest computer lab which opened with a reception on October 15. The lab has advanced assistive technology equipment for blind or visually impaired students as well as stations set up for students with wheelchairs. In addition, a multi-media room contains special equipment providing video and sound for both intra-net and Internet communications. This newest facility increases the total number of PC's available to students to over 300.

Northeastern Illinois University is a state-supported commuter university serving more than



Libertyville Review

NORTHEASTERN ILLINOIS UNIVERSITY

Contact: Susan Namest

October, 1997

(773) 794-6676

(L-R Standing) Michael Carl, Ph.D., Dean of Northeastern Illinois University's (NEIU) College of Education; Wilma Sutton, Executive Assistant to the President; and Ricki Shine, Coordinator of the University Honors Program observe a computer demonstration at the university's seventh and newest computer lab which opened with a reception on October 15. The lab has advanced assistive technology equipment for blind or visually impaired students as well as stations set up for students with wheelchairs. In addition, a multi-media room contains special equipment providing video and sound for both intra-net and Internet communications. This newest facility increases the total number of PC's available to students to over 300.

Northeastern Illinois University is a state-supported commuter university serving more than 10,000 students. It is located at 5500 North St. Louis Avenue in Chicago.

11/1/97



**Northeastern
Illinois
University**

UNIVERSITY RELATIONS

5500 NORTH ST. LOUIS AVENUE
CHICAGO, ILLINOIS 60625-4699

773 / 583-4050, EXT. 3291

NEWS

**MEDIA RELEASE
October 1, 1997**

**Contact: Susan Namest
773/794-6676**

"OUTSTANDING NEW CITIZEN" HONOR TO NORTHEASTERN PROFESSOR CHICAGO CITIZENSHIP COUNCIL NAMES DR. ANGELINA PEDROSO

Angelina Pedrosa, LL.D., professor in the Department of Foreign Languages and Literatures at Northeastern Illinois University, was recently honored by the Citizenship Council of Metropolitan Chicago as one of five "Outstanding New Citizens of 1996-1997."

The award, presented to Dr. Pedrosa at the Citizenship Day and Constitution Week Program held September 16 in Chicago, recognizes her many accomplishments in teaching and community service.

Among her countless accolades, Dr. Pedrosa has received the Outstanding Educator of America Award, Community Leader of America Award, and Women's Year Award. She has also been acknowledged for her contributions to the Latino community by several Hispanic organizations, and her name is listed in many "Who's Who" publications.

A teacher for 32 years, Dr. Pedrosa has helped numerous students to successfully complete their studies at Northeastern as well as to become life-long learners.

Northeastern Illinois University is a comprehensive, state-supported commuter institution in Chicago serving more than 10,000 students.

FOR IMMEDIATE RELEASE
October 1, 1997

Contact: Elaine Specter
773-794-2912

**SELECTIONS FROM A NEW OPERA "THE PATRIOTS" HIGHLIGHT A SHOWCASE OF
WORKS BY NORTHEASTERN ILLINOIS UNIVERSITY'S RONALD COMBS
PERFORMANCES - THURSDAY, OCTOBER 23 AT 7:30 P.M.**

Selections from "The Patriots," an opera composed by Dr. Ronald Combs, Professor of Music at Northeastern Illinois University (NEIU), highlights a showcase of the composer's works on Thursday, October 23rd at 7:30 p.m., in the university's auditorium. Excerpts will be presented in concert form by NEIU students, faculty, staff, alumni and guest artists.

"The Patriots" takes place during the Revolutionary War and includes several historical characters including George Washington, and the early American composer, William Billings. Although fictionalized, the plot is based on an actual happening turning the tide of the war.

The concert, sponsored by NEIU's Department of Music and the Dance Program, will also include songs and instrumental pieces written by Combs over the past several years. Admission is free.

Northeastern is located at 5500 North St. Louis Avenue in Chicago (near Bryn Mawr and Central Park). Free parking is available in parking lot "D" at the northwest corner of the campus. (Look for the large blue and white sign that reads "Northeastern Illinois University") For further information, call 773/794-3042.

Northeastern Illinois University is a comprehensive state-supported commuter institution in Chicago serving more than 10,000 students.

FOR IMMEDIATE RELEASE
October 1997

Contact: Elaine Specter
773/794-2912

**CHICAGO AND SUBURBAN FACULTY APPOINTMENTS ANNOUNCED AT
NORTHEASTERN ILLINOIS UNIVERSITY IN CHICAGO**

The following tenure-track Chicago and suburban faculty have recently been appointed at Northeastern Illinois University in Chicago:

(Lake View) Timothy Barnett, Visiting Instructor, Department of English at Wittenberg University, to Assistant Professor, English, College of Arts and Sciences.

(East Edgewater) Katrina Bell, Graduate Teaching Associate at Ohio University's School of Interpersonal Communication, to Assistant Professor, Speech and Performing Arts, College of Arts and Sciences.

(Lincoln Square) Russell Benjamin, Instructor at the University of Florida, to Assistant Professor, Political Science, College of Arts and Sciences.

(Bensenville) Denise Cloonan, Visiting Professor at Laramie County Community College, to Assistant Professor, Foreign Languages and Literatures, College of Arts and Sciences.

(Arlington Heights) Pradeep Maxwell Dass, Coordinator of the Iowa Chautauqua Program, National Diffusion Network Project at the University of Iowa, to Assistant Professor, Teacher Education, College of Education.

(North Park) Tedi Draghici, Teaching Assistant at Michigan State University, to Assistant Professor, Mathematics, College of Arts and Sciences.

(Lincoln Square) Laurie Fuller, lecturer in Women's Studies and Information Professing Consultant, Division of Information Technology, University of Wisconsin, to Assistant Professor and Coordinator, Women's Studies, College of Arts and Sciences.

(Evanston) Suzanne Gaskins, Lecturer in the Department of Psychology, University of Pennsylvania, to Assistant Professor, Psychology, College of Arts and Sciences.

-more-

NORTHEASTERN ILLINOIS UNIVERSITY
ADD I

(Evanston) Cathy Stanley, Visiting Lecturer at Northeastern, to Assistant Professor, Social Work, College of Arts and Sciences.

(Evanston) Michael Tuck, Instructor at Northeastern, to Assistant Professor, History, College of Arts and Sciences.

Northeastern Illinois University is a comprehensive state-supported commuter institution in Chicago serving more than 10,000 students.

SPECIAL TO THE CHRONICLE
October 1997

Contact: Elaine Specter
773/794-2912

**NEW TENURE-TRACK FACULTY APPOINTMENTS ANNOUNCED
AT NORTHEASTERN ILLINOIS UNIVERSITY IN CHICAGO**

The following tenure-track faculty appointments have recently been announced at Northeastern Illinois University in Chicago:

Timothy Barnett, Visiting Instructor, Department of English at Wittenberg University, to Assistant Professor, English, College of Arts and Sciences.

Katrina Bell, Graduate Teaching Associate at Ohio University's School of Interpersonal Communication, to Assistant Professor, Speech and Performing Arts, College of Arts and Sciences

Russell Benjamin, Instructor at the University of Florida, to Assistant Professor, Political Science, College of Arts and Sciences.

Denise Cloonan, Visiting Professor at Laramie County Community College, to Assistant Professor, Foreign Languages and Literatures, College of Arts and Sciences.

Pradeep Maxwell Dass, Coordinator of the Iowa Chautauqua Program, National Diffusion Network Project at the University of Iowa, to Assistant Professor, Teacher Education, College of Education.

Tedi Draghici, Teaching Assistant at Michigan State University, to Assistant Professor, Mathematics, College of Arts and Sciences.

Laurie Fuller, lecturer in Women's Studies and Information Professing Consultant, Division of Information Technology, University of Wisconsin, to Assistant Professor and Coordinator, Women's Studies, College of Arts and Sciences.

Suzanne Gaskins, Lecturer in the Department of Psychology, University of Pennsylvania, to Assistant Professor, Psychology, College of Arts and Sciences.

-more-

NORTHEASTERN ILLINOIS UNIVERSITY
ADD I

Cathy Stanley, Visiting Lecturer at Northeastern, to Assistant Professor, Social Work, College of Arts and Sciences.

Michael Tuck, Instructor at Northeastern, to Assistant Professor, History, College of Arts and Sciences.

Northeastern Illinois University is a comprehensive state-supported commuter institution in Chicago serving more than 10,000 students.

SPECIAL TO CALENDAR LISTINGS
October 7, 1997

Contact: Elaine Specter
773/794-2912

"FLAMENCO PASSION" BY ENSEMBLE ESPAÑOL SPANISH DANCE THEATER

PERFORMANCES OF DANCE, MUSIC & SONG

DECEMBER 5 & 6 AT NORTHEASTERN ILLINOIS UNIVERSITY

FRIDAY & SATURDAY, DECEMBER 5 & 6, 8:00 P.M.

Ensemble Español Spanish Dance Theater, in residence at Northeastern Illinois University, Dame Libby Komaiko, director, presents "Flamenco Passion," an evening of Spanish dance, music and song to celebrate the holiday season. Guest artists from Spain and the Americas will join the Ensemble's full company of 35 dancers and musicians and the All City "JR" Ensemble Español.

The concert includes premieres by Dame Komaiko and highlights from the company's extensive repertoire, featuring music by Albeniz and DeFalla and a full Flamenco Cuadro.

Guest musicians include singers "Maria Elena "La Cordobesa," and Paco Fonta; guitarists Greg Wolfe, Paco Fonta, Mateo and Hector Fernandez; percussionist Miqq LaBriola; soprano Phyllis Hurt; pianist Stephen Zivin; and flutist Shannon Heaton. Among the dancers are the company's first dancers Irma Suarez Ruiz and Jorge Perez, and principal dancer Maria Cecilia.

LOCATION - Northeastern Illinois University's Auditorium, 5500 North St. Louis Avenue (near Bryn Mawr and Central Park). Free parking is available in parking lot "D" at the northwest corner of the campus. (Look for the large blue and white sign that reads "Northeastern Illinois University").

PRICE - Admission is \$20.00; senior citizens and students, \$18.00; children under 12, \$15.00. Group rates are available.

PHONE - To charge-by-phone, call (773) 794-2538

For more information and group rates, call the dance office at
(773) 583-4050, ext. 3015.

SPECIAL TO CALENDAR LISTINGS
October 7, 1996

Contact: Elaine Specter
(312) 794-2912

**PERFORMING ARTS EVENTS FOR DECEMBER 1996
PRESENTED BY NORTHEASTERN ILLINOIS UNIVERSITY'S
DEPARTMENT OF MUSIC AND THE DANCE PROGRAM**

All events are sponsored by Northeastern Illinois University's (NEIU) Department of Music and the Dance Program and are held in NEIU's Auditorium, 5500 North St. Louis, Chicago, (Bryn Mawr and Central Park) unless otherwise indicated. Free parking is available in parking lot "D" at the northwest corner of the campus. For concert information, call (312) 794-3042.

MONDAY, DECEMBER 2, 7:30 P.M.

NEIU Concert Band directed by Jonathan Martin. Free admission.

FRIDAY, SATURDAY, DECEMBER 6 & 7, 8 P.M.

"Noche Flamenca," a holiday evening of Spanish dance, music and song, culminating Ensemble Espanol Spanish Dance Theater's 20th anniversary season. Dame Libby Komaiko, director presents performances featuring the full company of 30 dancers and musicians with guest artists from Spain and the Americas. Performers include Maria Elena "La Cordobesa"; Flamenco singer; Paco Fonta; Flamenco singer and guitarist; Greg Wolfe and Mateo; Flamenco guitarists and Mick LaBriola, percussionist; first dancer, Irma Suarez Ruiz; and principal dancers Jorge Perez and Patricia Bueno. The concert includes premieres by Dame Komaiko and highlights from the company's extensive repertoire, featuring music by Albeniz and DeFalla and a full Flamenco Cuadro. Tickets are \$20.00, \$18.00, and \$15.00 (312) 583-4050, ext. 3015.

MONDAY, DECEMBER 9, 7:30 P.M.

NEIU's Alumni Band directed by Maris Sternberg. Free admission.

FRIDAY, DECEMBER 13, 7:30 P.M.

The second in a series of NEIU's Chamber Music concerts features the internationally acclaimed Vermeer Quartet with Shmuel Askenazi and Matthias Tacke, violins; Richard Young, viola, Marc Johnson, cello; with guest artists Rami Solomonow, viola and Chris Costanza, cello performing quartets of Schubert and Mozart and the Dvorak String Sextet. Admission is \$10.00; senior citizens and students, \$8.00. The music series is produced in partnership with Mostly Music, Inc.

FOR IMMEDIATE RELEASE
October 8, 1997

Contact: Elaine Specter
773/794-2912

"ANATOMY OF CENSORSHIP: WHY THE CENSORSHIP HAVE IT WRONG"

NEW BOOK BY HARRY WHITE, NEIU PROFESSOR OF ENGLISH

"Anatomy of Censorship: Why the Censorship Have it Wrong" has been recently released by Northeastern Illinois University professor of English, Dr. Harry White. Sorting out the many confusing explanations and often misleading justifications for censorship, the book offers a timely critique of the most seductive and bogus justification for censorship bringing together diverse disciplines such as literary and legal history, modern psychology and contemporary feminism.

White, an NEIU faculty member in the Department of English for the past 20 years, is the author of numerous essays and works of fiction. He has published interviews with such prominent writers as Saul Bellow and Wright Morris.

White received his Ph.D. in English Literature from Northwestern University, a master's degree in English Literature from the University of Sussex, England, and a bachelor's degree from the University of Illinois.

The book is published by University Press of America, Inc. Inquiries, orders, or payments for books received should be made to Professor White at Northeastern Illinois University, 5500 North St. Louis Avenue, Chicago, Illinois 60625, (773) 794-2665.

Northeastern Illinois University is a comprehensive, state-supported commuter institution in Chicago serving more than 10,000 students.

MAGIC FLUTE

Wednesday, November 19; Friday, November 21; Saturday, November 22

7:30 p.m. Auditorium

On November 19, 21 and 22, the University Opera Workshop will present Mozart's wonderful opera "The Magic Flute" in the University Auditorium. Performances begin at 7:30 p.m. Admission is \$7.00.

This work, written shortly before Mozart's tragic death at the age of thirty-six, is considered by many to be his finest opera. It was last presented at Northeastern in 1975. It is a fairy tale opera with philosophical overtones and can be enjoyed on many levels.

Our orchestra will be conducted by Michael Melton and the opera will be co-directed by Drs. Ronald Combs and Venetia Stifler. The cast is composed of Northeastern students. Kevin Peterson, a Northeastern Alumnus, is designing the set and costumes and the opera will be sung in an excellent English translation by Robert Gay, former Opera Director at Northwestern University.

The Magic Flute has been produced in many ways; in modern dress, Baroque period, Egyptian dress and even as a Nazi drama! We have some interesting ideas that should surprise and interest everyone and we hope that anyone interested in theater will find time to attend. It promises to be an exciting evening.

FOR IMMEDIATE RELEASE

October 8, 1997

Contact: Elaine Specter

773/794-2912

**PERFORMING ARTS EVENTS FOR NOVEMBER
PRESENTED BY NORTHEASTERN ILLINOIS UNIVERSITY'S
DEPARTMENT OF MUSIC AND THE DANCE PROGRAM**

All events are sponsored by Northeastern Illinois University's (NEIU) Department of Music and the Dance Program and are held in NEIU's Auditorium, 5500 North St. Louis, Chicago (near Bryn Mawr and Central Park), unless otherwise indicated. Free parking is available in parking lot "D" at the northwest corner of the campus. Look for the large blue and white sign that reads "Northeastern Illinois University." For concert information, call 773/794-3042.

Friday, November 7, 8:00 p.m.

Student Dance Concert. Admission is \$5.00

Tuesday, November 11, 7:30 p.m.

NEIU Faculty Recital with Jonathan Martin, trumpet; Greg Flint, horn; and Mark Hoelscher, trombone. Featured are solo performances and well as ensemble pieces, including compositions by Bozza, Cooke, Ibert, and Jacob. Free admission.

Wednesday, November 12, 7:30 p.m.

NEIU Concert Band directed by Thomas McCauley. Free admission

Thursday, November 13, 10:50 a.m., Classroom Bldg. Lecture Hall, 1002

Workshop with the Pacifica String Quartet, in residence at the Music Center of the North Shore. Sponsored in partnership with Mostly Music, Inc. Free admission.

Thursday, November 13, 7:30 p.m.

NEIU New Music Concert, directed by James Lucas and Nelson Mandrell. Free admission.

Wednesday, Friday, and Saturday, November 19, 21 and 22, 8:00 p.m.

NEIU Opera Workshop presents Mozart's "The Magic Flute," sung in English. Directors are Ronald Combs and Venetia Stifler. The orchestra is conducted by Michael Melton. Admission is \$7.00. Advance ticket purchase at the NEIU Information Desk - (773) 794-2538

Tuesday, November 25, 1:45, A-Wing, Room A-131

NEIU Chamber Music Ensembles, directed by Peter Chang. Free admission.

Tuesday, November 25, 7:30 p.m.

NEIU Chorus, directed by Michael Melton. Free admission.

Northeastern Illinois University is a state-supported commuter institution in Chicago serving more than 10,000 students.

MEDIA ALERT AND PHOTO OPP
October 13, 1997

Contact: Susan Namest
773/794-6676

UPDATED SCHEDULE

SEVENTH COMPUTER LAB FOR STUDENTS TO OPEN OCTOBER 15

AT NORTHEASTERN ILLINOIS UNIVERSITY

WHAT: Open house for "Information Commons," the seventh student computer laboratory, especially equipped for students who are visually impaired or in wheelchairs. Demonstrations by faculty and students. Northeastern plans to open this new center for students seven days a week. Information Commons has 81 computers in total, 74 PC Pentium Pro's with Windows NT and 7 Power Macs. Three high performance workstations are located in a Multi-Media Room. Ten PC's are arranged in two Nova Stations for students working in groups. All computers are networked internally and to the Internet.

An Assistive Technology Room provides a braille printer and computers specifically accessible to blind or visually impaired students, and two stations which are set up for students with wheelchairs. Two HP LaserJet printers are centrally located for maximum accessibility.

WHERE: Northeastern Illinois University, 5500 North St. Louis Avenue, Chicago,
Classroom Building - Room 0002.

WHEN: Wednesday, October 15, 2:30 - 4:00 p.m.

CONTACT: Bill Moressi, Director of Academic Computing, 773/583-4050 X6215.

FOR IMMEDIATE RELEASE
October 14, 1997

Contact: Elaine Specter
773/794-2912

"EQUITY IN ACTION" WEEK TO FOCUS ON DIVERSITY AND INTOLERANCE
NATIONALLY RECOGNIZED EXPERTS ASA HILLIARD AND SAMUEL BETANCES TO SPEAK
HOSTED BY NORTHEASTERN ILLINOIS UNIVERSITY - OCTOBER 20 - 24

The third annual "Equity in Action Week," October 20 to 24, hosted by Northeastern Illinois University (NEIU), will focus this year on diversity and intolerance issues featuring nationally recognized guest speakers Asa Hilliard and Samuel Betances. The week-long series includes lectures, seminars, discussions and films. Programs will take place at NEIU, 5500 North St. Louis Avenue in Chicago. All programs are free and open to the public.

Keynote speaker, Asa Hilliard, Fuller E. Callaway Professor of Education at Georgia State University, Atlanta, kicks off the week with a talk on "Diversity and Curriculum Validity: A Definition of the Problem" on Monday, October 20, at 10:15 a.m. He will make a second presentation on "Diversity and Curriculum Validity: Approaches to Solutions" at 4:30 p.m. on the same day. Both lectures will be held in the university's Alumni Hall.

At 10:00 a.m. on Tuesday, October 21, Samuel Betances, NEIU Professor Emeritus, Sociology, and recipient of the National Hispanic Hero Award, will speak on "The Games People Play: The Implementation and Side-Tracking of Diversity."

-more-

NORTHEASTERN ILLINOIS UNIVERSITY

ADD I

Among some other topics covered during the week are "Religion and Intolerance," "Equity for Gays and Lesbians in Illinois," "Color Blind Inequality: The Problem of the Twenty-First Century," "Impact of Academic and Career Challenges Faced by College Students with Disabilities," and "Diversity and the Workforce 2000: What are the Challenges for Companies?" Presenters, panelists and moderators include NEIU faculty and staff in addition to guests from the business and academic community.

The public is invited to attend and participate in panel discussions and forums.

For more information, call the Office of Academic Development at (773) 794-6258.

Northeastern Illinois University is a comprehensive, state-supported commuter institution in Chicago serving more than 10,000 students.

A SCHEDULE IS ATTACHED



N Northeastern
Illinois
University

presents...

Equity in Action:

Affirmative Action Issues "Diversity and Intolerance"

October 20-24, 1997

Calendar of Events

Monday, October 20, 1997

10:00 - 10:15 a.m. **Alumni Hall**

Opening Ceremony **Murrell Duster**, Convenor
Dean, Academic Development, NEIU
Remarks **Venetia Stiffler**, Chairperson and Associate Professor,
Music and Dance Program, NEIU
NEIU Jazz Ensemble, **Jonathan Martin**, Director,
Assistant Professor, Music, NEIU

10:15 - 11:50 a.m. **Alumni Hall**

DIVERSITY AND CURRICULUM VALIDITY: A Definition of the Problem

Opening Remarks **Salme H. Steinberg**, President, NEIU
Introduction **Michael Carl**, Dean, College of Education, NEIU
Moderator **Angelina Pedroso**, Associate Professor, Foreign Languages and
Literatures, NEIU
Keynote Speaker **Asa Hilliard**, Fuller E. Callaway Professor of Education, Georgia State
University, Atlanta, Georgia

12:00 - 1:50 p.m. **CC-218**

RELIGION AND INTOLERANCE

Introduction **Mohan Sood**, Dean, Graduate College, NEIU
Moderator **Asad Hussain**, Professor, Political Science, NEIU
Presenters Spokespersons from **Hindu, Catholic, Jewish, Muslim, Sikh, Baha'i,**
Buddhist, Protestant, and Greek Orthodox faiths

4:30 - 6:30 p.m. **Alumni Hall**

DIVERSITY AND CURRICULUM VALIDITY: Approaches to Solutions

Introduction **Janet Bercik**, Coordinator, Clinical Experiences and Student Teaching,
College of Education, NEIU
Moderator **Edward Robinson**, Professor, Curriculum and Instruction, College of
Education, NEIU
Keynote Speaker **Asa Hilliard**, Fuller E. Callaway Professor of Education, Georgia State
University, Atlanta, Georgia

7:05 - 9:45 p.m. **CC-217**

WOMEN/POVERTY AND JUSTICE

Introduction/Moderator **Renny Golden**, Associate Professor, Criminal Justice, NEIU
Presenter **Dion Lovett**, Policy Director for HOME (Homeless
on the Move for Equality)

Tuesday, October 21, 1997

10:00 - 11:50 a.m. **CC-217**

THE GAMES PEOPLE PLAY: The Implementation and Side-Tracking of Diversity

Introduction **Janet Sandoval**, Director, Nontraditional Degree Programs, NEIU
Moderator **Murrell J. Duster**, Dean, Academic Development, NEIU
Keynote Speaker **Samuel Betances**, Professor Emeritus, Sociology, NEIU

12:15 - 1:50 p.m. **CC-217**

AFFIRMATIVE ACTION: A History of The Challenge

Introduction/Moderator **Miriam Rivera**, Director, Admissions and Records, NEIU
Presenter **Kenneth Addison**, Associate Professor, Educational Foundations,
Division of Leadership, NEIU
Discussants **Dragan Milovanovic**, Professor, Criminal Justice, NEIU
Barbara Scott, Chairperson and Associate Professor, Sociology,
Criminal Justice and Social Work, NEIU
June Sochen, Professor, History, NEIU
Tom Kochman, Kochman Communication, Consultant, Professor,
Author of "Black and White Styles in Conflict"

schedule continues on opposite side

For additional information, please call Academic Development at (773) 794-6258.

All Events Are Free And Open To The Public

VOTER REGISTRATION will take place from 10:00 a.m. to 2:00 p.m., and 4:00 p.m. to 7:00 p.m.,
Monday thru Friday, in Village Square, Station 3.

1:40 - 2:50 p.m. _____ Golden Eagles

**IMPACT OF ACADEMIC AND CAREER CHALLENGES
FACED BY COLLEGE STUDENTS WITH DISABILITIES**

Introduction/Moderator Victoria Amey-Flippin, Coordinator, H.E.L.P., NEIU
Presenters/Panelists Margo Smith, Affirmative Action Officer and Coordinator of Legal Affairs, NEIU
Lorn Coleman, Director, Placement Office, NEIU
Sharon Howerton, Senior Rehabilitation Counselor, Dept. of
Rehabilitation Services
Gary Almo, Marketing Specialist, Dept. of Rehabilitation Services
Awilda Martinez, Counselor, Social Security Administration
Discussants Sara Capetillo, Mahenda Dimming, Billy Bertucci,
Raymond Ferrara, Senior Level Students, NEIU
Jan Lewis, Gayl Johnson, Junior Level Students, NEIU
Arlin Abraham, Brenda Washington,
Gabriella Herrera, Sophomore Level Students, NEIU
Toby Williams, James Hammock, Freshman Level Students, NEIU

2:50 - 4:05 p.m. _____ CC-217

EQUITY FOR GAYS AND LESBIANS IN ILLINOIS

Introduction/Moderator Laurie Fuller, Coordinator, Women's Studies, NEIU
Presenters Mary Morton, Department of Human Relations, State of Illinois
Shelley Bannister, Associate Professor, Criminal Justice, NEIU
Representative Barbara Hansen, P-Flag

4:15 - 5:30 p.m. _____ Alumni Hall

VIDEO PRESENTATIONS -

"Interview with John Hope Franklin"
"Ida B. Wells"

Moderators/Discussants Kingsley Clarke, Assistant Professor, Criminal Justice, NEIU
Patrick Miller, Assistant Professor, History, NEIU

4:15 - 6:00 p.m. _____ CC-217

**TOLERATING TOLERANCE IN ACADEMIA:
The Not So Straight and Narrow**

Redefining of tolerance
How to break the cycle of racism and homophobia in academia
Discovering the roots of homophobia

Introduction Nan Giblin, Associate Dean, College of Education, NEIU
Moderator Margo Smith, Affirmative Action Officer and Coordinator of Legal Affairs, NEIU
Presenter Steve Brown, Special Assistant to the President and Professor of
Educational Leadership, NEIU

Wednesday, October 22, 1997

10:00 - 11:50 a.m. _____ CC-217

**COLOR BLIND INEQUALITY:
The Problem of the Twenty-First Century**

Introduction/Moderator Bernard Headley, Professor, Criminal Justice, NEIU
Presenter Jacob Carruthers, Acting Director of Center for Inner City Studies,
NEIU
Discussant Charles Barber, Professor, History, NEIU
State Representative Janice D. Schakowsky, 18th District
Valerie Simms, Professor, Political Science, NEIU

4:00 - 5:30 p.m. _____ CC-218

VIDEO - "America in Black and White"

Moderator/Discussant BarBara Scott, Chairperson and Associate Professor, Sociology,
Criminal Justice and Social Work, NEIU

Thursday, October 23, 1997

12:15 - 1:30 p.m. _____ CC-218

VIDEO PRESENTATION - "Skin Deep"

Moderator/Discussant Nancy Matthews, Assistant Professor, Criminal Justice, NEIU
Discussant Jerry Waters, Acting Assistant Dean, Academic Development, NEIU

1:40 - 2:50 p.m. _____ CC-217

STUDENT PANEL

THE MEANING OF DIVERSITY: An Urban Campus Perspective

Introduction Charles Pastors, Chairman and Professor, Political Science,
Chair of Faculty Senate, NEIU
Moderator Estela López, Provost, NEIU
Discussants Ruben Gerena, Student, NEIU; Jeng Fong, Student, NEIU;
Jackie Alvarez, Student, NEIU; Jaime Mendoza, Student, NEIU;
Antonio Ward, Student, NEIU; Rickey McCoy, Student, NEIU;
Adeeb Asad, Student, President of Student Government, NEIU
R. Kipp Hassell, Dean of Students, NEIU

Friday, October 24, 1997

10:00 - 12:00 p.m. _____ CC-217

**DIVERSITY AND THE WORKFORCE 2000:
WHAT ARE THE CHALLENGES FOR COMPANIES?**

Welcome Estela López, Provost, NEIU
Introduction Lorn Coleman, Director, Placement Office, NEIU
Moderator Charles Falk, Dean, College of Business and Management, NEIU
Presenters Brian Powers, President - Diversity Network, Bank of America
Lee Wade, Management Planning/Diversity, Northern Illinois Gas Company

RECEPTION TO FOLLOW



UNIVERSITY RELATIONS

5500 NORTH ST. LOUIS AVENUE
CHICAGO, ILLINOIS 60625-4699

773 / 583-4050, EXT. 3291

NEWS

FOR IMMEDIATE RELEASE
October 16, 1997

Contact: Susan Namest
773/794-6676

MAZON CREEK OPEN HOUSE AT NORTHEASTERN ILLINOIS UNIVERSITY

NEW GUIDE BOOK ON MAZON CREEK AVAILABLE - SATURDAY, OCTOBER 25

The Mazon Creek Project, a program of Northeastern Illinois University's (NEIU) Department of Earth Science, is holding an Open House at NEIU's Science building, 5500 North St. Louis Avenue in Chicago, on Saturday October 25, from 1:00 P.M. to 4:00 P.M. The event will feature speakers, fossil displays, children's activities, and the newly released Mazon Creek guide book. Admission is free.

Richardson's Guide to the Fossil Fauna of Mazon Creek, the first book published by Northeastern, will be available for sale at this event, and editors Charles Shabica, Ph.D., Northeastern professor of Earth Science, and Andrew A. Hay, a long-time Mazon Creek fossil collector, will be joining contributing authors to speak and sign books. The guide is the first comprehensive account of the animal fossil wonders found at Mazon Creek.

Shabica initiated the Project in 1983 to preserve the dialogues between experts and collectors that were started by the late Dr. Eugene S. Richardson, a former Curator of Paleontology at Chicago's Field Museum. Richardson was well-known for identifying Mazon Creek fossils. Located near Braidwood, Illinois, the Creek is home of the state fossil, the Tully Monster, a soft fossil of an as yet unidentified animal.

For information on the Open House, call Andrew A. Hay, NEIU Mazon Creek Project Associate Curator, at 773/794-6263.

Northeastern Illinois University is a comprehensive state-supported commuter institution in Chicago serving more than 10,000 students.

TO: University Community
FROM: Community Affairs & Publications
DATE: October 16, 1997



FOR YOUR INFORMATION:

1997 MAZON CREEK OPEN HOUSE

The 1997 Mazon Creek Annual Open House will be held on Saturday, October 25, in the Science Building. Be sure to come and enjoy a full afternoon of events -- from 1:00 to 4:00 p.m. Bring your children, family, and friends, too. Refreshments will be served, exhibits will be on display, and informative and interesting talks will be given. The talks will start at 2:15 p.m., and the raffle drawing is at 2:00 p.m.

The Mazon Creek biota provides the most complete known record of Paleozoic life in the world. The area, near Braidwood, Illinois, is where the Tully Monster, the Illinois State Fossil, is found.

Speakers at the event will include authors of the newly published fossil atlas, *Richardson's Guide to the Fossil Fauna of Mazon Creek*. Copies of the book will be available for sale and signatures by authors.

Guests are encouraged to bring their own fossils for display and identification by experts. There will be special activities for children. For more information, call Andrew A. Hay, NEIU Mazon Creek Project Associate Curator, at 773/794-6263.



**Northeastern
Illinois
University**

UNIVERSITY RELATIONS

5500 NORTH ST. LOUIS AVENUE
CHICAGO, ILLINOIS 60625-4699

773 / 583-4050, EXT. 3291

NEWS

FOR IMMEDIATE RELEASE
October 29, 1997

Contact: Elaine Specter
773/794-2912

**AFRICAN-AMERICAN/CARIBBEAN HERITAGE WEEK FEATURING NATIONALLY
RECOGNIZED EXPERTS BARRY CHEVANNES AND PAULETTE CHEVANNES
HOSTED BY NORTHEASTERN ILLINOIS UNIVERSITY - NOVEMBER 3 - 7**

"African American/Caribbean Heritage Week," November 3 to 7, hosted by Northeastern Illinois University (NEIU) will focus on "Reuniting African American and Caribbean Cultural Communities." Featured are Dr. Barry Chevannes, renowned Caribbean sociologist and anthropologist and Dean of the Faculty of Social Sciences, University of the West Indies, Kingston, Jamaica, and Mrs. Paulette Chevannes, a highly regarded educator. The week-long series features lectures, seminars, and panel discussions. Programs will take place at NEIU, 5500 North St. Louis Avenue in Chicago. All programs are free and open to the public.

Keynote speaker, Dr. Chevannes, kicks off the week with a talk on "The Tie That Binds: Marcus Garvey and our Diaspora" on Monday, November 3, at 7:00 p.m. The lecture will take place in the university's Golden Eagles Room with a reception following. On Tuesday, November 4, at 12:15 p.m, in NEIU's Commuter Center, Paulette Chevannes will be a presenter in the forum, "Educating African American and Caribbean Students for the 21st Century."

Other topics during the week include "Literature Panel: African American/Caribbean Literary and Cultural Connection," "A Puerto Rican on the Left: Jesus Colon's Third World Caribbean Vision," and "African Influence in the Caribbean."

-more-

NORTHEASTERN ILLINOIS UNIVERSITY

ADD I

Presenters, panelists and moderators include NEIU faculty and staff in addition to guests from the business and academic community. The public is invited to attend and participate in panel discussions and forums.

For more information, call the Office of Academic Development at (773) 794-6258.

Northeastern Illinois University is a comprehensive, state-supported commuter institution in Chicago serving more than 10,000 students.

A SCHEDULE IS ATTACHED



N Northeastern
Illinois
University

presents...

African American/ Caribbean Heritage Week

November 3-7, 1997

Calendar of Events

MONDAY NOVEMBER 3, 1997

7:00 - 8:30 p.m. Golden Eagles

Opening Ceremony: **Murrell Duster**, Convenor
Dean, Academic Development, NEIU
Opening Remarks: **Salme H. Steinberg**, President, NEIU
Greetings: **Lloyd L. Hyde**, Hon. Consul, Consulate of Jamaica

AFRICAN AMERICAN/CARIBBEAN: "REUNITING AFRICAN AMERICAN AND CARIBBEAN CULTURAL COMMUNITIES"

Introduction/Moderator: **Bernard Headley**, Professor, Criminal Justice, NEIU
Keynote Speaker: **Barry Chevannes**, Dean, Faculty of Social Sciences, University of West Indies, Kingston, Jamaica, "THE TIE THAT BINDS: MARCUS GARVEY AND OUR DIASPORA"
Closing Comments: **Estela López**, Provost, NEIU

RECEPTION TO FOLLOW Alumni Hall

TUESDAY NOVEMBER 4, 1997

10:00 - 11:50 a.m. CC-217

LITERATURE PANEL: AFRICAN AMERICAN/CARIBBEAN LITERARY AND CULTURAL CONNECTIONS

Introduction: **Kenneth Addison**, Associate Professor, Educational Foundations, Division of Leadership, NEIU
Moderator: **Donald Hoffman**, Professor and Chair, English, NEIU
Presenters: **Maximino Torres**, Bilingual Counselor, Associate Professor, Proyecto Pa'Lante, NEIU, "PUERTO RICAN LITERATURE: A LITERATURE OF REBELLION"
..... **Nancy Cirillo**, Assistant Professor, English, University of Illinois at Chicago, "BRITISH CARIBBEAN: A LITERATURE OF RESISTANCE AND EXILE"
..... **Timothy Libretti**, Assistant Professor, English, NEIU, "A PUERTO RICAN ON THE LEFT: JESUS COLON'S THIRD WORLD CARIBBEAN VISION"

12:15 - 1:30 p.m. CC-217

EDUCATING AFRICAN AMERICAN AND CARIBBEAN STUDENTS FOR THE 21ST CENTURY

Introduction: **Ada Umeh**, Coordinator, Graduate Admissions, Graduate College, NEIU
Moderator: **Janet Fredericks**, Professor and Chair, Educational Leadership and Development, NEIU
Presenter: **Paulette Chevannes**, Former Principal, Charlie-Smith Comprehensive High School, Kingston, Jamaica
Discussants: **Jane Montes**, Assistant Professor, Teacher Education, NEIU
..... **Edward Robinson**, Professor, Curriculum and Instruction, NEIU

1:40 - 2:50 p.m. Alumni Hall

AFRICAN INFLUENCE IN THE CARIBBEAN: History, Culture, and the Arts

Introduction: **Carlos Lebron**, Coordinator, Summer Transition Program, NEIU
Moderator: **Aaron Horne**, Professor, Music, NEIU
Presenter: **Evarista Rodriguez**, Director, Multi-Cultural Arts and Founder of Africaribe

THIS SESSION WILL INCLUDE A PRESENTATION OF THE IMPACT AFRICAN RELIGION (YORUBA) HAS ON PUERTO RICAN, DOMINICAN, HAITIAN, CUBAN, AND OTHER CARIBBEAN SOCIETIES

2:50 - 4:05 p.m. CC-217

THE CHANGING ROLE OF WOMEN: HIGHER EDUCATION IN THE CARIBBEAN

Introduction: **Ana Villafane**, Coordinator, Proyecto Pa'Lante, NEIU
Moderator: **Lidia Filus**, Associate Dean, College of Arts and Science, NEIU
Presenter: **Estela López**, Provost, NEIU
Discussants: **Barbara Scott**, Associate Professor and Chairperson, Sociology, Criminal Justice and Social Work, NEIU
..... **Nan Giblin**, Professor and Associate Dean, College of Education, NEIU

WEDNESDAY NOVEMBER 5, 1997

10:00 - 11:50 a.m. CC-217

AFRO-CARIBBEAN INFLUENCES IN THE AFRICAN AMERICAN LIBERATION STRUGGLE

Introduction: **Charas Kinkle**, Associate Professor, Accounting and Business Law, NEIU
Moderator: **Valerie Simms**, Professor, Political Science, NEIU
Presenter: **Russell Benjamin**, Assistant Professor, Political Science, NEIU
Discussants: **Jacob Carruthers**, Professor, Inner City Studies, Acting Director of Center for Inner City Studies, NEIU
..... **J. Ignacia Mendez**, Associate Professor, History, NEIU
..... **Robert Starks**, Associate Professor, Inner City Studies, NEIU
..... **Jane Montes**, Assistant Professor, Teacher Education, NEIU

12:15 - 1:50 p.m. CC-217

THE LEGACY OF CLR JAMES, CARIBBEAN INTELLECTUAL

Introduction: **Sandra Hunt**, Associate Professor, English and English Language Program, NEIU
Moderator/Presenter: **Timothy Libretti**, Assistant Professor, English, NEIU, "C.L.R. JAMES AND THE U.S. LEFT"
Presenters: **Scott Mclemee**, *In These Times*, Editor, "C.L.R. JAMES AND RICHARD WRIGHT"
..... **Sundiata Cha-Jua**, Professor, Department of Historical Studies, Southern Illinois University-Edwardsville, "C.L.R. JAMES AND THE WRITING OF AN AFRO-CARIBBEAN DIASPORIC HISTORY"

7:00 - 9:45 p.m. CC-217

AFRICAN AMERICAN/CARIBBEAN POLITICAL CONNECTIONS

Introduction: **Bernard Headley**, Professor, Criminal Justice, NEIU
Moderator: **Jacob Carruthers**, Professor, Inner City Studies, Acting Director of Center for Inner City Studies, NEIU
Presenters: **Robert Starks**, Associate Professor, Inner City Studies, NEIU, "AFRICAN AMERICAN/CARIBBEAN PAN-AFRICAN POLITICS"
..... **Barbara Ransby**, Professor, Department of African American Studies, University of Illinois at Chicago, "AFRICAN AMERICAN/CARIBBEAN POLITICS"
..... **Lou Turner**, Managing Editor, *News and Letters*, "RECONNECTING WITH THE REVOLUTIONARY ROOTS OF AFRICAN AMERICAN AND CARIBBEAN THOUGHT"
..... **Harry Fouche**, Haitian Activist, "AN OVERVIEW OF CARIBBEAN POLITICS: HAITI AND CUBA"

THURSDAY, NOVEMBER 6, 1997

Alumni Hall

"LES PETITES VEDETTES"

Sponsored by French Club, NEIU
Appearing at International Day

FRIDAY, NOVEMBER 7, 1997

10:00 a.m. - 12:00 p.m. CC-217

GLOBALIZATION AND EMERGING MARKETS: DOING BUSINESS IN THE CARIBBEAN REGION

Introduction/Moderator: **Emmanuel Nyadroh**, Assistant Professor, Accounting, NEIU
Presenters: **Madame Nadege Merceron**, Consulate General of Haiti
..... **Lloyd L. Hyde**, Honorary Consul, Consulate of Jamaica
..... **Guillermo Ruiz-Cox**, Director of Industrial Promotions, Midwest Region, Economic Development Administration, Government of Puerto Rico
Discussants: **Anil Pandya**, Associate Professor, Marketing, NEIU
..... **Edward Stuart**, Professor, Economics, NEIU

For additional information,
please call Academic Development
at (773) 794-6258.

All Events Are Free And Open To The Public



*Gay Chicago Mag, Skyline/Lerner
windy city Times*

NORTHEASTERN ILLINOIS UNIVERSITY
November 1997

Contact: Elaine Specter
773/794-2912

(L-R) Barbara Hansen, Representative from P-Flag (Parents, Families and Friends of Lesbians and Gays); Janet Sandoval, Northeastern Illinois University (NEIU) Director of Non-Traditional Programs; Shelley Bannister, NEIU Associate Professor of Criminal Justice; Laurie Fuller, NEIU Coordinator of Women's Studies; and Murrel Duster, NEIU Dean of Academic Development. Fuller, Hansen and Bannister participated in a panel on "Equity for Gays and Lesbians in Illinois" at the recent "Equity in Action Week" held at NEIU. The university hosted guests from many walks of life who joined students, faculty, and staff in exploring issues on diversity and intolerance.

Northeastern Illinois University is a state-supported commuter institution in Chicago serving more than 10,000 students.



*Libertyville Review, Skokie Review,
Chicago Crusader*

NORTHEASTERN ILLINOIS UNIVERSITY
November 1997

Contact: Elaine Specter
773/794-2912

(L-R) Michael E. Carl, Northeastern Illinois University (NEIU) Dean of the College of Education; Angelina Pedroso, NEIU Associate Professor, Foreign Languages and Literatures; Asa Hilliard, Fuller E. Callaway Professor of Education, Georgia State University; Melvin C. Terrell, NEIU Vice Present for Student Affairs; and Murrell Duster, NEIU Dean of Academic Development. Hilliard delivered the keynote speech on "Diversity and Curriculum Validity" at the recent "Equity in Action Week" held at NEIU. The university hosted guests from many walks of life who joined students, faculty, and staff in exploring issues on diversity and intolerance.

Northeastern Illinois University is a state-supported commuter institution in Chicago serving more than 10,000 students



EXITO, LA RAZA,

NORTHEASTERN ILLINOIS UNIVERSITY
November 1997

Contact: Elaine Spector
773/794-2912

(L-R) Murrell Duster, Dean of Academic Development at Northeastern Illinois University (NEIU); Samuel Betances, NEIU Professor Emeritus, Sociology; and Janet Sandoval, NEIU Director of Non-Traditional Programs. Betances, a nationally recognized expert on diversity issues, and recipient of the National Hispanic Hero Award, was a guest speaker at the recent "Equity in Action Week" held at NEIU.

He spoke on "The Games People Play: The Implementation and Side-Tracking of Diversity." The university hosted guests from many walks of life who joined students, faculty, and staff in exploring issues on diversity and intolerance.

Northeastern Illinois University is a state-supported commuter institution in Chicago serving more than 10,000 students.



*N'Digo Schauburg Review, citizen
newspapers, Defender*

NORTHEASTERN ILLINOIS UNIVERSITY
November 1997

Contact: Elaine Specter
773/794-2912

(L-R) Brian Powers, President, Diversity Network, Bank of America; Lorn Coleman, Northeastern Illinois University (NEIU) Director of Placement; Murrell Duster, NEIU Dean of Academic Development; Lee Wade, Management Planning/Diversity, Northern Illinois Gas Company; Charles F. Falk, Dean of NEIU's College of Business and Management; and NEIU Provost Estela López, at the recent "Equity in Action Week" held at NEIU. The group participated in a panel discussion on "Diversity and the Workforce 2000: What are the Challenges for Companies?"

The university hosted guests from many walks of life who joined students, faculty, and staff in exploring issues on diversity and intolerance.

* Northeastern Illinois University is a state-supported commuter institution in Chicago



*Independent Bulletin, Evanston Review,
Oak Leaves, Extra*

NORTHEASTERN ILLINOIS UNIVERSITY
November 1997

Contact: Elaine Specter
773/794-2912

(L-R) Charles Pastors, Northeastern Illinois University (NEIU) Professor of Political Science; Murrell Duster, NEIU Dean of Academic Development; Asa Hilliard, Fuller E. Callaway Professor of Education, Georgia State University; NEIU President Salme H. Steinberg; and Michael E. Carl, NEIU Dean of the College of Education. Hilliard delivered the keynote speech on "Diversity and Curriculum Validity" at the recent "Equity in Action Week" held at NEIU. The university hosted guests from many walks of life who joined students, faculty, and staff in exploring issues on diversity and intolerance.

Northeastern Illinois University is a state-supported commuter institution in Chicago

FOR IMMEDIATE RELEASE
November 11, 1997

Contact: Elaine Specter
773/794-2912

"FLAMENCO PASSION" BY ENSEMBLE ESPAÑOL SPANISH DANCE THEATER
PERFORMANCES OF DANCE, MUSIC & SONG CELEBRATING THE HOLIDAY SEASON
DECEMBER 5 & 6 AT NORTHEASTERN ILLINOIS UNIVERSITY

Ensemble Español Spanish Dance Theater, in residence at Northeastern Illinois University (NEIU), Dame Libby Komaiko, artistic director, celebrating its third decade at the university, presents "Flamenco Passion," an evening of Spanish dance, music and song to celebrate the holiday season on Friday and Saturday, December 5 and 6, at 8:00 p.m. in NEIU's Auditorium.

Guest dancers and musicians from Spain and the Americas will join the Ensemble's full company of 35 with the addition of the All City "JR" Ensemble Español. Dancers include Dame Komaiko, the company's first dancers Irma Suarez Ruiz and Jorge Perez, and principal dancer Maria Cecilia.

Guest musicians include flamenco singer Maria Elena "La Cordobesa"; singer guitarist Paco Fonta; flamenco guitarists Greg Wolfe, Mateo and Hector Fernandez; percussionist Miqq LaBriola; soprano Phyllis Hurt; pianist Stephen Zivin; and flutist Shannon Heaton.

Gala performances from the company's extensive repertory will include "Recuerdos de Albéniz, Falla y Garcia Lorca" by Dame Komaiko; "Zapateado" by Dame Komaiko and Paco Alonso; and "Danza de las Islas Canarias" from the Suite Folklorico by Juanjo Linares. Also included is a full cuadro flamenco called "Flamenco Passion" with premiere solos and full company choreographies including tangos, siguiriyas, farucca, caracoles, garrotin, bulerias, rumbas and more.

-more-

NORTHEASTERN ILLINOIS UNIVERSITY

ADD I

General admission is \$20.00; senior citizens and students, \$18.00; and children under 12, \$15.00.

NEIU is located at 5500 North St. Louis Avenue in Chicago. Free auditorium parking is available in parking lot "D" at the northwest corner of the campus near Bryn Mawr (5600 North) and Central Park (3600 West). Look for the large blue and white sign that reads "Northeastern Illinois University."

For charge-by-phone tickets, call (773) 794-2538. For group rates and more information, call the Ensemble Español office at (773) 583-4050, ext. 3015.

Northeastern Illinois University is a comprehensive, state-supported commuter institution in Chicago serving more than 10,000 students.

1996 Vermeer Concert

FOR IMMEDIATE RELEASE
November 13, 1996

Contact: Elaine Specter
(773) 794-2912

**VERMEER QUARTET AND GUEST ARTISTS PERFORM FRIDAY, DECEMBER 13
IN CHAMBER MUSIC SERIES AT NORTHEASTERN ILLINOIS UNIVERSITY**

The Grammy-nominated Vermeer Quartet with Shmuel Ashkenasi and Mathias Tacke, violins, Richard Young, viola, and Marc Johnson, cello, will perform in concert at Northeastern Illinois University's tenth anniversary Chamber Music Series, Friday, December 13, at 7:30 p.m. Commentary will precede the program and a reception with the artists will follow.

Guest artists Rami Solomonow, violist and Christopher Costanza, cellist, will join the Vermeer in a performance of Dvorak's Sextet in A Major, Op. 48. Mozart's String Quartet in C Major, K. 465 "Dissonant." and Schubert's String Quartet in A Minor, No. 13 D. 804 are also on the program.

The Vermeer has achieved an international reputation as one of the world's finest classical music ensembles. Formed in 1969, they have performed in major cities throughout the world and at virtually all the most prestigious festivals including Tanglewood, Spoleto, Aspen, Lucern, Ravinia, Edinburgh and the Casals Festivals. The *New York Times* describes the Vermeer as "among the top chamber music ensembles." Among their many recordings are the entire Beethoven cycle, plus works by Schubert, Dvorak, Mendelssohn, and Brahms.

-more-

NORTHEASTERN ILLINOIS UNIVERSITY

ADD I

Guest violist Rami Solomonow is a member of the Chicago String Quartet and the Chicago Chamber Musicians. He has performed as soloist and chamber musician in numerous music festivals in the U.S., Japan, South American, and in Israel, where he was a member of the Israel Chamber Orchestra.

Cellist Christopher Costanza is also a member of the Chicago String Quartet and the Chicago Chamber Musicians. He has received a number of awards and grants, and his performing career has taken him all over the U.S., Europe, Canada, and the Caribbean, as soloist and chamber musician.

Admission is \$10.00; senior citizens and students, \$8.00. The music series, presented by NEIU's Department of Music and the Dance Program, is produced in partnership with Mostly Music, Inc. The performance will take place in NEIU's Auditorium, 5500 North St. Louis Avenue (Bryn Mawr and Central Park), Chicago. Free parking is available in parking lot "D" at the northwest corner of the campus. For further information, call (773) 794-3042.



*Chicago Sun-times, Reader
Chicago Tribune, Daily Herald, Bellingbrook Metro*

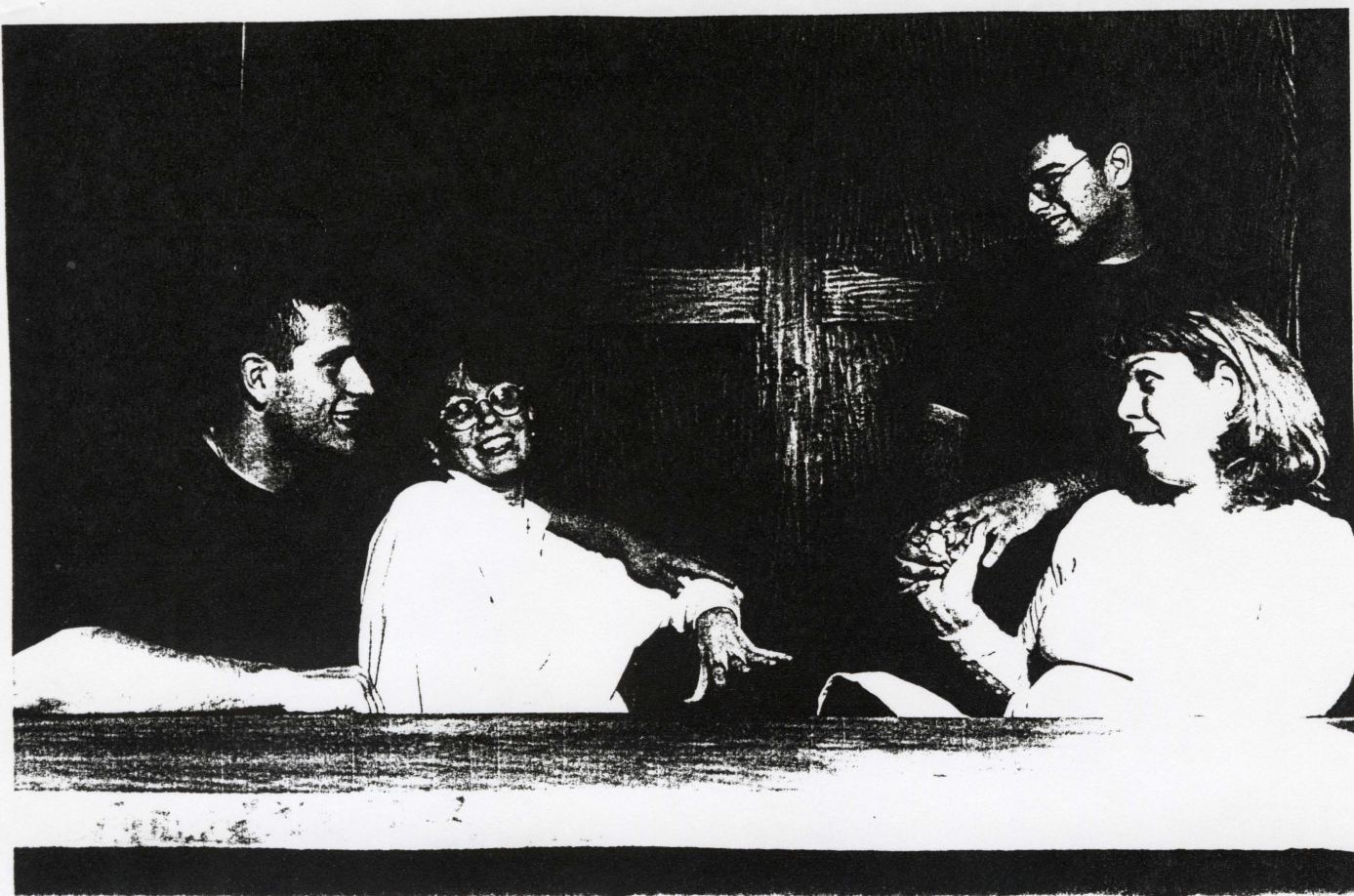
NORTHEASTERN ILLINOIS UNIVERSITY
November 1997

Contact: Elaine Specter
773-794-2912

(L-R) Rania Baxter and Peter Plane in a scene from "Variations on the Death of Trotsky," one of six one-act plays from playwright David Ives' collection "All in the Timing." The production called "A Paradigm of Perversion," is the second presentation of Northeastern Illinois University's (NEIU) Stage Center Theatre's 1997-98 season. The other fast-paced comic plays performed include, "Sure Thing," "The Universal Language," "Seven Menus," "English Made Simple," and "Philip Glass Buys a Loaf of Bread."

The production runs Wednesday through Saturday, December 3 - 6 at 7:30 p.m., at NEIU's Stage Center Theatre, (F-Wing), 5500 North St. Louis Avenue, Chicago (near Bryn Mawr and Central Park). Free parking is available in Lot "D" at the northwest corner of the campus. Look for the large blue and white sign that reads "Northeastern Illinois University."

Admission is \$8.00; senior citizens and students, \$6.00. Group and subscription rates are available. For ticket information, call the Stage Center Box Office at (773) 794-6652.



*Learn Newspaper
Noddy Newspapers
Leader & Post Newspapers*

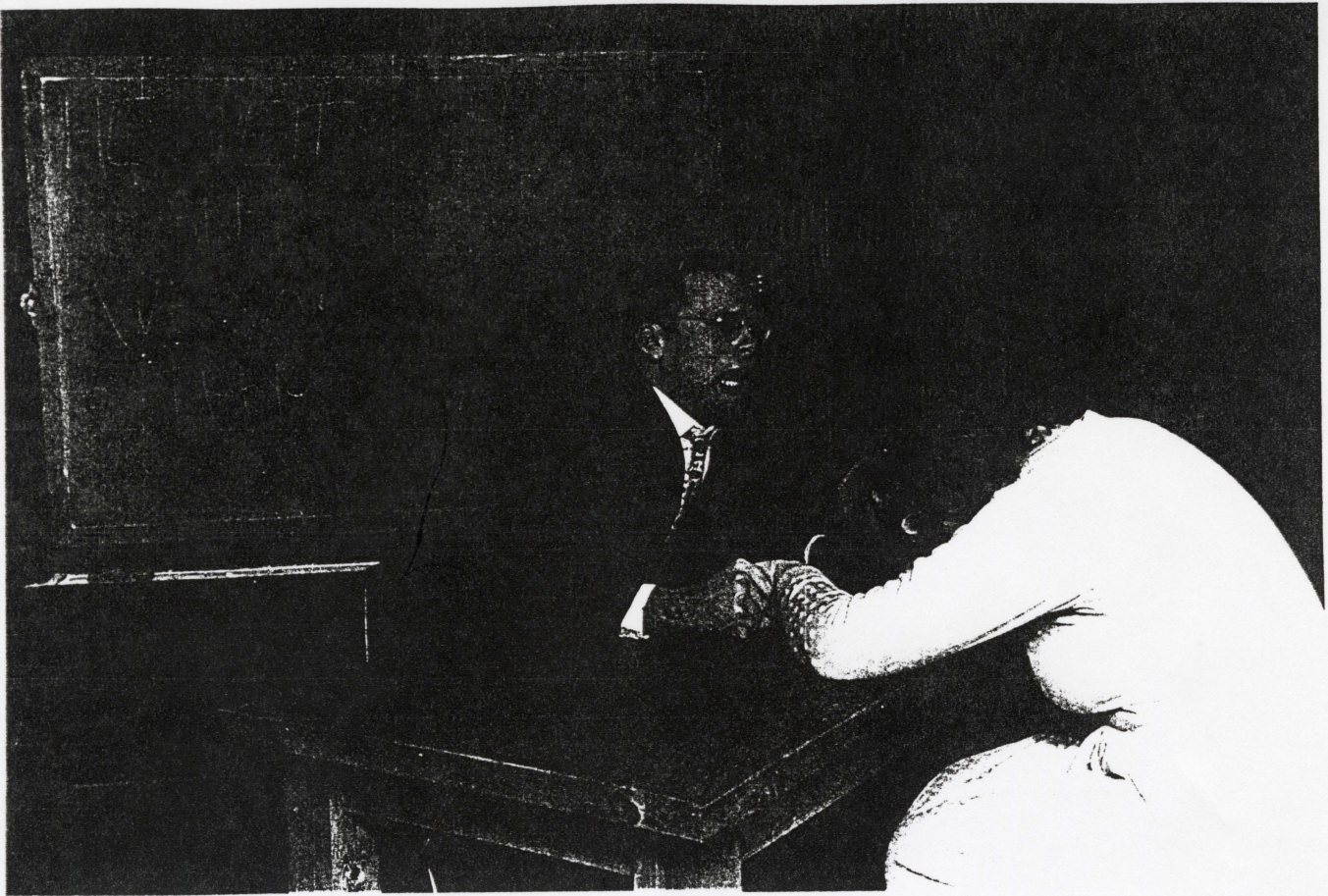
NORTHEASTERN ILLINOIS UNIVERSITY
November 1997

Contact: Elaine Spector
773-794-2912

(L-R) Sean Buino (North Center), Colleen Kustusch (Edgewater), Joseph Alaimo (Norridge) and Anastasia Harold (Lincoln Square), in a scene from "Seven Menus," one of six one-act plays from playwright David Ives' collection "All in the Timing." The production called "A Paradigm of Perversion," is the second presentation in Northeastern Illinois University's (NEIU) Stage Center Theatre's 1997-98 season. The other fast-paced comic plays performed include "Sure Thing," "The Universal Language," "Variations on the Death of Trotsky," "English Made Simple," and "Philip Glass Buys a Loaf of Bread."

The production runs Wednesday through Saturday, December 3 - 6 at 7:30 p.m., at NEIU's Stage Center Theatre, (F-Wing), 5500 North St. Louis Avenue, Chicago (near Bryn Mawr and Central Park). Free parking is available in Lot "D" at the northwest corner of the campus. Look for the large blue and white sign that reads "Northeastern Illinois University."

Admission is \$8.00; senior citizens and students, \$6.00. Group and subscription rates are available. For ticket information, call the Stage Center Box Office at (773) 794-6652.



*Lerner Newspapers
Wadig Newspapers
Leader & Post Newspapers*

NORTHEASTERN ILLINOIS UNIVERSITY
November 1997

Contact: Elaine Specter
773-794-2912

(L-R) Chris Kustusch (North Center) and Anastasia Harold (Lincoln Square) in a scene from "The Universal Language," one of six one-act plays from playwright David Ives' collection "All in the Timing." The production called "A Paradigm of Perversion," is the second presentation in Northeastern Illinois University's (NEIU) Stage Center Theatre's 1997-98 season. The other fast-paced comic plays presented include "Sure Thing," "Variations on the Death of Trotsky," "Seven Menus," "English Made Simple," and "Philip Glass Buys a Loaf of Bread."

The production runs Wednesday through Saturday, December 3 - 6 at 7:30 p.m., at NEIU's Stage Center Theatre, (F-Wing), 5500 North St. Louis Avenue, Chicago (near Bryn Mawr and Central Park). Free parking is available in Lot "D" at the northwest corner of the campus. Look for the large blue and white sign that reads "Northeastern Illinois University."

Admission is \$8.00; senior citizens and students, \$6.00. Group and subscription rates are available. For ticket information, call the Stage Center Box Office at (773) 794-6652.



Northeastern
Illinois
University

UNIVERSITY RELATIONS

5500 NORTH ST. LOUIS AVENUE
CHICAGO, ILLINOIS 60625-4699

773 / 583-4050, EXT. 3291

NEWS

FOR IMMEDIATE RELEASE
November 17, 1997

Contact Elaine Specter
773/794-2912

**"A PARADIGM OF PERVERSION"- A STAGE CENTER THEATRE PRODUCTION
HIGHLIGHTS SIX ONE-ACT PLAYS FROM "ALL IN THE TIMING" BY DAVID IVES
OPENING AT NORTHEASTERN ILLINOIS UNIVERSITY ON DECEMBER 3**

"A Paradigm of Perversion," produced and directed by Northeastern Illinois University (NEIU) students, highlights six one-act plays from playwright David Ives' collection "All in the Timing." The show is the second production of NEIU's Stage Center Theatre's 1997-98 season. The fast-paced comic plays include "Sure Thing," "The Universal Language," "Variations on the Death of Trotsky," "Seven Menus," "English Made Simple," and "Philip Glass Buys a Loaf of Bread."

The production runs Wednesday through Saturday, December 3 - 6 at 7:30 p.m., at NEIU's Stage Center Theatre, (F-Wing), 5500 North St. Louis Avenue, Chicago (near Bryn Mawr and Central Park). Free parking is available in Lot "D" at the northwest corner of the campus. Look for the large blue and white sign that reads "Northeastern Illinois University."

Admission is \$8.00; senior citizens and students, \$6.00. Group and subscription rates are available.

For ticket information, call the Stage Center Box Office at (773) 794-6652.

Northeastern Illinois University is a comprehensive, state-supported commuter institution in Chicago serving more than 10,000 students.

CAST AND CREW
"All THE TIMING" (A PARADIGM OF PERVERSION)

ALBANY PARK

Tim Davis

AUSTIN

Dan Toledo

BELMONT CRAGIN

Christine Kostuchowski

BOLINGBROOK

Peter Piane

EDGEWATER

Colleen Kustus

FOREST PARK

Lisa Litberg

Kristin Mesikapp

IRVING PARK

Rania Baxter

Carole Brown

LAKEVIEW

Michael Buino

LINCOLN SQUARE

Anastasia Harold

MONTCLARE

Vicky Bielat

NAPERVILLE

Brenda R. Gilmore

NORRIDGE

Joseph Alaimo

NORTH CENTER

Sean Buino

Chris Kustus

PORTAGE PARK

Jeany Rocuant

UPTOWN

Luke Stinson

WINNETKA

Madeline H. Kidd

FOR IMMEDIATE RELEASE
November 21, 1997

Contact: Elaine Specter
773/794-2912

REGISTER NOW FOR DANCE CLASSES FOR CHILDREN, TEENS, ADULTS

OFFERED BY NORTHEASTERN ILLINOIS UNIVERSITY

NEW MUSIC CLASSES FOR CHILDREN TO START IN JANUARY

Registration for the spring session of dance classes for children, teenagers and adults, ages three and up begins Monday, December 15. The classes are offered by Northeastern Illinois University's (NEIU) Department of Music and the Dance Program.

Dance classes for children include Creative Movement, Pre-Ballet, Ballet I and II, and Jazz Dance for Kids. Classes for teens and adults include Ballet I and II, Jazz Dance, Stretch and Strengthening for Dance, and Pointe. In addition, a Repertory Ensemble/Dance Performance class has been added for students ages 12 and older who have reached intermediate to advanced level technique.

The spring session begins Tuesday, January 13 and continues through Saturday, June 6. Classes meet on Tuesdays, Thursdays, and Saturdays. The cost per course is \$100.00 to \$120.00 for the entire session. Discounts are available for students enrolled in multiple courses.

All dance classes will be held in the A-Wing dance studio, room A-113 at NEIU, located at 5500 North St. Louis Avenue (near Bryn Mawr and Central Park), Chicago.

-more-

NORTHEASTERN ILLINOIS UNIVERSITY

ADD I

For additional information or to receive a schedule of classes, contact Rachel Burton at (773) 794-6138.

Beginning in mid-January, NEIU will also offer music classes for children in Basic Music for Small Children, Rhythms and Music, and Piano. Classes will be held on Saturday mornings and schedules can be coordinated for students to participate in both dance and music.

For more details on the music classes and registration information, call Patty Henberger at 773/583-4050, ext. 3010.

Northeastern Illinois University is a state-supported commuter institution in Chicago serving more than 10,000 students.



NORTHEASTERN ILLINOIS UNIVERSITY
December 1997

Contact: Elaine Specter
773/794-2912

(L-R) Ted Biedron, President of the Northeastern Illinois University (NEIU) Foundation Board, congratulates Debra Hochman, Vice President of EHM & Technology for Waste Management, as NEIU President Salme H. Steinberg looks on, at the university's recent gala cabaret evening fundraiser held at the Park West. Hochman was one of four NEIU alumni honored for their distinguished service to the community. Proceeds from the benefit support student scholarships, faculty research and scholarly activities through NEIU's Foundation.

Northeastern Illinois University is a comprehensive state-supported commuter institution in Chicago serving more than 10,000 students.



NORTHEASTERN ILLINOIS UNIVERSITY
December 1997

Contact: Elaine Specter
773/794-2912

(L-R) Northeastern Illinois University (NEIU) alumni Richard Lindberg, author and managing editor of Illinois Police and Sheriff News; Debra Hochman, Vice President of EHM & Technology for Waste Management; Robert Jordan, WGN-TV co-anchor on the weekend news; and Barbi Porter, widow of jazz musician and alumnus Art Porter, with NEIU President Salme H. Steinberg looking on, at the university's recent gala cabaret evening fundraiser held at the Park West. The four alumni were honored for their distinguished service to the community. Proceeds from the benefit support student scholarships, faculty research and scholarly activities through NEIU's Foundation.

Northeastern Illinois University is a comprehensive state-supported commuter institution in Chicago serving more than 10,000 students.



NORTHEASTERN ILLINOIS UNIVERSITY
December 1997

Contact: Elaine Specter
773/794-2912

(L-R) Ted Biedron, President of the Northeastern Illinois University (NEIU) Foundation Board; Barbi Porter, widow of jazz musician and alumnus Art Porter; Richard Lindberg, author and managing editor of Illinois Police and Sheriff News; Debra Hochman, Vice President of EHM & Technology for Waste Management; Robert Jordan, WGN-TV co-anchor on the weekend news; and NEIU President Salme H. Steinberg. Biedron and Steinberg congratulated the four NEIU alumni for their distinguished service to the community, at the university's recent gala cabaret evening fundraiser held at the Park West. Proceeds from the benefit support student scholarships, faculty research and scholarly activities through NEIU's Foundation.

Northeastern Illinois University is a comprehensive state-supported commuter institution in Chicago serving more than 10,000 students.



NORTHEASTERN ILLINOIS UNIVERSITY
December 1997

Contact: Elaine Specter
773/794-2912

(L-R) Cabaret singer Nan Mason; Stephan M. Donovan, Northeastern Illinois University (NEIU) Associate Director of Development; and Jacqueline Kane, wife of Steven Kane, Treasurer of NEIU's Foundation Board, are all smiles at the university's recent gala cabaret evening fundraiser held at the Park West. Four NEIU alumni were honored at the festivities for their distinguished service to the community. Proceeds from the benefit support student scholarships, faculty research and scholarly activities through NEIU's Foundation.

Northeastern Illinois University is a comprehensive state-supported commuter institution in Chicago serving more than 10,000 students.



NORTHEASTERN ILLINOIS UNIVERSITY
December 1997

Contact: Elaine Specter
773/794-2912

(L-R) Daniel Goodwin, Chairman and CEO of the Inland Company, and President of Northeastern Illinois University's (NEIU) Board of Trustees, and Mrs. Goodwin are all smiles at the university's recent gala cabaret evening fundraiser held at the Park West. Four NEIU alumni were honored at the festivities for their distinguished service to the community. Proceeds from the benefit support student scholarships, faculty research and scholarly activities through NEIU's Foundation.

Northeastern Illinois University is a comprehensive state-supported commuter institution in Chicago serving more than 10,000 students.



NORTHEASTERN ILLINOIS UNIVERSITY
December 1997

Contact: Elaine Specter
773/794-2912

(L-R) Hilton Leibow, Northeastern Illinois University (NEIU) Foundation Board member and Mrs. Leibow enjoying the festivities at the university's recent gala cabaret evening fundraiser held at the Park West. Four NEIU alumni were honored at the event for their distinguished service to the community. Proceeds from the benefit support student scholarships, faculty research and scholarly activities through NEIU's Foundation.

Northeastern Illinois University is a comprehensive state-supported commuter institution in Chicago serving more than 10,000 students.



NORTHEASTERN ILLINOIS UNIVERSITY
December 1997

Contact: Elaine Specter
773/794-2912

(L-R) Northeastern Illinois University (NEIU) alumnus Alan Wilson, Mrs. Wilson and NEIU President Salme H. Steinberg chatting at the university's recent gala cabaret evening fundraiser held at the Park West. Four NEIU alumni were honored at the festivities for their distinguished service to the community. Proceeds from the benefit support student scholarships, faculty research and scholarly activities through NEIU's Foundation.

Northeastern Illinois University is a comprehensive state-supported commuter institution in Chicago serving more than 10,000 students.

FOR IMMEDIATE RELEASE
December, 1997

Contact: Elaine Specter
773/ 794-2912

**"A WORLD OF DANCE PREMIERES IN A SINGLE EVENING" HIGHLIGHTS DANCE TROUPES:
THE MOOSE PROJECT, SAME PLANET DIFFERENT WORLD, ESPECIALLY TAP CHICAGO, AND**

TANGO 21 KICKS OFF THE RUTH PAGE DANCE SERIES 1998 SEASON

AT NEIU FRIDAY & SATURDAY, JANUARY 30 AND 31

The Ruth Page Dance Series, honoring and celebrating the life of the legendary dancer, kicks off its seventh season at Northeastern Illinois University (NEIU) with "A World of Dance Premieres in a Single Evening," the first of three showcase weekends, on Friday and Saturday, January 30 and 31. Among the companies featuring a multitude of dance styles are:

The Moose Project, under the direction of choreographer/artistic director Paul Abrahamson, makes its Ruth Page Dance Series debut with these appearances. The troupe will present two pieces titled: "Scenes with a Rose," a comedic dance, blending classical and tango movements, plus a new contemporary ballet

Same Planet Different World, combining the talents of founding members Jason Ohlberg, Leif Tellman and Alicia Elliott, will present three pieces, two of which are world premieres. The premieres are "The Trinity," based on *No Exit*, by Jean Paul Sartre and "La Vie en Rose," a duet celebrating love, romance and roses. The program also includes "View Through a Grain of Sand," looking at loss and the universal hardships death brings.

-more-

NORTHEASTERN ILLINOIS UNIVERSITY

ADD I

Especially Tap Chicago, under the direction of Bruce Stegmann, will present several works including a premiere titled "Rhythm Times 5." Other pieces planned are "Night and Day," and "I've Got you Under My Skin."

Tango 21, under the artistic direction of Jorge Nidas, brings the flavor of Argentine tango to Chicago, blending both the ballet and tango vocabularies in the choreography. The company will present several tangos with musical accompaniment and a vocalist, and will include at least one world premiere work by Nidas.

The Ruth Page Dance Series, sponsored by NEIU's Department of Music and the Dance Program, will also present special events including student matinees, master classes and lectures/demonstrations. In addition, showcase weekends are scheduled for February and March. All performances are at 8:00 p.m. in NEIU's auditorium, 5500 North St. Louis Avenue, Chicago (near Bryn Mawr and Central Park). Free parking is available in Lot "D" at the northwest corner of the campus. Look for the large blue and white sign that reads "Northeastern Illinois University." Tickets are \$15.00, general admission, and \$10.00, students and senior citizens. Subscriptions and group rates are available.

For tickets, call 773/794-2538. For more information, contact Rachel Burton at 773/794-6138.

Northeastern Illinois University is a comprehensive, state-supported commuter institution in Chicago serving more than 10,000 students.

FOR IMMEDIATE RELEASE
December, 1997

Contact: Elaine Specter
773/794-2912

**FLAMENCO DANCE WORKSHOPS
OFFERED BY ENSEMBLE ESPAÑOL SPANISH DANCE THEATER
AT NORTHEASTERN ILLINOIS UNIVERSITY**

Flamenco dance workshops for adults and teens are being offered by Ensemble Español Dance Theater, in residence at Northeastern Illinois University (NEIU). Dame Libby Komaiko, artistic director, and 1st dancers Irma Suarez Ruiz and Jorge Perez, will instruct the classes in Sevillanas (Level I) and Tangos/Alegrías/Soleares/Bulerías (Level II).

Classes will be held every Tuesday for both sessions. Sevillanas will be taught from 7:00 to 8:15 p.m. and Tangos/Alegrías/Soleares/Bulerías from 8:30 to 9:45 p.m., starting January 20 through March 24 and April 7 through June 9 at NEIU, 5500 North St. Louis Avenue (near Bryn Mawr and Central Park), Building A-Wing (A-113). The cost per class is \$10.00. The student rate is 50 percent off regular fees.

For more information on the dance workshops, call (773) 583-4050, ext. 3015.

Northeastern Illinois University is a comprehensive, state-supported commuter institution in Chicago serving more than 10,000 students.



**Northeastern
Illinois
University**

UNIVERSITY RELATIONS

5500 NORTH ST. LOUIS AVENUE
CHICAGO, ILLINOIS 60625-4699

773 / 583-4050, EXT. 3291

NEWS

FOR IMMEDIATE RELEASE
December 1997

Contact: Elaine Specter
773/794-2912

**PERFORMING ARTS EVENTS FOR JANUARY AND FEBRUARY 1998
PRESENTED BY NORTHEASTERN ILLINOIS UNIVERSITY'S
DEPARTMENT OF MUSIC AND THE DANCE PROGRAM**

All events are sponsored by Northeastern Illinois University's (NEIU) Department of Music and the Dance Program and are held at NEIU, 5500 North St. Louis, Chicago, (near Bryn Mawr and Central Park). Free parking is available in parking lot "D" at the northwest corner of the campus. Look for the large blue and white sign that reads "Northeastern Illinois University." For concert information, call (312) 794-3042. For tickets, call 773-794-2538.

TUESDAY, JANUARY 20, 7:30 P.M., AUDITORIUM

Nick Butera, piano, in a graduate recital. Free admission

THURSDAY, JANUARY 22, 7:30 P.M., AUDITORIUM

Bradley Payne, trombone, in a graduate recital. Free admission

FRIDAY & SATURDAY, JANUARY 30 AND 31, 8:00 P.M., AUDITORIUM

The Ruth Page Dance Series presents the first concert in their 1998 series, featuring Especially Tap Company, The Moose Project, Same Planet Different World, and Tango 21. Admission is \$15.00; senior citizens and students, \$10.00. The series continues March 27 and 28.

Subscriptions and group rates are available. For ticket information, call Rachel Burton at (773) 794-6138.

FRIDAY, FEBRUARY 6, 7:30 P.M., AUDITORIUM

"A Celebration of African American History" featuring the Jimmy Ellis Ensemble; Willy Pickens; Willie Brown Jr.; and Sharon Hamilton. A reception with the artists follows the concert.

Admission is \$10.00; senior citizens and students, \$8.00. The concert is produced in partnership with Mostly Music, Inc.

SATURDAY, FEBRUARY 14, 8:00 P.M., COMMUTER CENTER

Feria de Amor, a Valentine Fiesta Benefit, featuring Spanish cuisine, and Latin dancing, with performances by Ensemble Español Spanish Dance Theater. The evening's entertainment includes a costume competition, prizes, raffles and more. Admission is \$25.00

-more-

NORTHEASTERN ILLINOIS UNIVERSITY
ADD I

FRIDAY & SATURDAY, FEBRUARY 20 and 21, 8:00 P.M., AUDITORIUM

The Ruth Page Dance Series presents the second concert in their 1998 series, featuring Ensemble Español Spanish Dance Theater, in residence at NEIU, Dame Libby Komaiko, director; The Jump Rhythm Jazz Project; Melissa Thodos and Dancers; and the Xsight! Performance Group.

Admission is \$15.00; senior citizens and students, \$10.00. The series continues March 27 and 28. Subscriptions and group rates are available. For ticket information, call Rachel Burton at (773) 794-6138.

MONDAY, FEBRUARY 23, 7:30 P.M., AUDITORIUM

Mark Epling, piano, in a graduate recital. Free admission.

FRIDAY, FEBRUARY 27, 7:30 P.M., AUDITORIUM

Elaine Swearingen, soprano, in a graduate recital. Free admission.



**Northeastern
Illinois
University**

UNIVERSITY RELATIONS

5500 NORTH ST. LOUIS AVENUE
CHICAGO, ILLINOIS 60625-4699

773 / 583-4050, EXT. 3291

NEWS

FOR IMMEDIATE RELEASE
December 10, 1997

Contact: Elaine Specter
773-794-2912

**PRESIDENT AND CEO OF CHICAGOLAND CHAMBER OF COMMERCE TO SPEAK AT
NORTHEASTERN ILLINOIS UNIVERSITY THURSDAY, JANUARY 29**

Gerald J. Roper, president and CEO of the Chicagoland Chamber of Commerce will speak at Northeastern Illinois University (NEIU) on Thursday, January 29, at 1:40 p.m in the university's Golden Eagles Room. Roper's talk on "The Economic Outlook for 1998," is the third annual economic outlook lecture presented by NEIU's Business and Management Club. The public is invited and admission is free.

In addition to Roper's Chamber of Commerce responsibilities, he is active in a number of community, civic and industry organizations. He serves as chairman of the President's Advisory Council for Harold Washington College and is on the boards of the International Visitors Center of Chicago, Variety Clubs of Illinois, and the Chicago International Film Festival.

At the civic level, Roper is one of three business-at-large representatives appointed by Mayor Richard M. Daley to the Empowerment Zone/Enterprise Community Coordinating Council. He is also a member of the Director's Advisory Council for the City of Chicago Department of Revenue, and the Citizens' Advisory Board of the Chicago Transit Authority.

For more information, call Mary O'Malley, College of Business & Management, at 773/794-2648.

NEIU, located at 5500 North St. Louis Avenue in Chicago, is a comprehensive state-supported commuter institution serving more than 10,000 students..



FOR IMMEDIATE RELEASE

December 15, 1997

CONTACT:

Silvino da Silva
773/248-1003 or
847/677-1932

The Ruth Page Dance Series 1998 Season "A World of Dance Premieres in a Single Evening" Weekend I: January 30, 31, 1998

Now in its seventh season, the **Ruth Page Dance Series** is known for bringing together the best in Chicago dance for three weekends of performance showcases, uniting different styles of dance on a single stage for six exciting evenings. The 1998 Season, however, will be slightly different from previous years. For the first time, the **Ruth Page Dance Series** presents performance showcases of **world premiere** works: "A World of Dance Premieres in a Single Evening."

The first weekend of **Ruth Page Dance Series** concert showcases features performances by the Especially Tap Company, the Moose Project, Same Planet Different World, and Tango 21.

The Moose Project is under the direction of choreographer/Artistic Director Paul Abrahamson. The company, whose performances previously been centered in Pittsburgh and South America, performs both classical and contemporary works. The Moose Project is making their Chicago area debut with their Ruth Page Dance Series appearances. They will be presenting two pieces: "Scenes With a Rose," a comedic dance which blends classical ballet and tango movements, and a new contemporary ballet choreographed by Paul Abrahamson.

Same Planet Different World combines the talents of founding members Jason Ohlberg, Leif Tellman and Alicia Elliott. The company will be presenting three pieces at the Ruth Page Dance Series, two of which will be world premieres. "The Trinity" is a new work loosely inspired by Jean Paul Sartre's "No Exit." The second premiere, "La Vie en Rose," a duet, is a section of a larger work titled "Vive L'amour," which the company will premiere later this year. "La Vie en Rose" is a celebration of love, romance, and of course, roses! Also on the program is Ohlberg's solo "View through a Grain of Sand," which looks at loss and the universal hardships death brings.

A
World
of
Dance Premieres
in a
Single
Evening

Venetia Stifler
Series Artistic Director

Rachel Burton
Series Coordinator

Silvino da Silva
Director of Marketing

Maria A. Gándara
Assistant Coordinator

Advisory Panel

Gerald Arpino
Artistic Director,
The Joffrey Ballet of Chicago

Ann Barzel
Dance Writer

Tom Chakos
Golf Construction

Michael Hugos
Business Systems Designer

Lonny Gordon
University of Nevada, Las Vegas

Brian Keady
The Beautiful Sound

Marianne Shymanik
Marc S. Schulman
Eli's Cheesecake

Jerold Solovy
Jenner & Block
The Ruth Page Foundation

Salme H. Steinberg
President
Northeastern Illinois University

Lois Weisberg
Commissioner of Cultural Affairs
City of Chicago



Especialy Tap Chicago, under the direction of Bruce Stegmann, promises to surprise and delight audiences once more by presenting several works at this years Ruth Page Dance Series. The company plans to premiere a work titled "Rhythm Times 5" at this years series. Performed a cappella, this piece is a collaborative effort between Especialy Tap's company members. Other pieces planned by the company include "Night & Day" and "I've Got You Under My Skin."

Tango 21, under the artistic direction of Jorge Nidas, brings the exciting flavor of Argentine Tango to Chicago. Mr. Nidas, formerly a very accomplished ballet dancer in both North and South America, also blends both the ballet and Tango vocabularies in his choreography. The result is a company that performs both traditional and contemporary interpretations of the Tango. The company will be presenting several Tangos, accompanied by live musicians and vocalist, including at least one world premiere work by Mr. Nidas.

The **Ruth Page Dance Series** gives Chicago area audiences the opportunity to see some of the best that the art of dance has to offer: twelve Chicago area dance companies in three weekends of showcase concerts featuring the dynamics of jazz dance, the percussive rhythms of tap, the innovation of modern dance, the elegance of ballet, and the passion and tradition of ethnic dance.

For three weekends, January 30, 31, February 20, 21, and March 28, 29, these artists will come together for three very exciting and innovative concerts showcasing world premiere works by the featured companies. Each and every dance company participating in this year's **Ruth Page Dance Series** will be presenting at least one world premiere work.

Special Events

This season the Ruth Page Dance Series has grown to include student matinees, master classes and residencies at Northeastern Illinois University. Upcoming events include lecture-demonstrations by Melissa Thodos & Dancers on Thursday, February 19, 1998 at 11am and Concert Dance, Inc. on March 27, 1998 at 11am. Master classes are also planned for the months of February and March.

All performances are at the Northeastern Illinois University Auditorium
5500 North St. Louis Avenue in Chicago

FREE parking available in Lot "D" at Central Park and Bryn Mawr

Tickets: \$15/general admission, \$10/students and seniors

Subscriptions and group rates available

For tickets call 773/794-2538 or

For information contact Rachel Burton at: 773/794-6138

FOR IMMEDIATE RELEASE
December 22, 1997

Contact: Susan Namest
773/794-6676

**ALLEN N. SHUB NAMED ASSOCIATE DEAN OF THE COLLEGE OF BUSINESS AND
MANAGEMENT AT NORTHEASTERN ILLINOIS UNIVERSITY**

Charles F. Falk, Ph.D., Dean of the College of Business and Management at Northeastern Illinois University (NEIU), is pleased to announce the appointment of Allen N. Shub, Ph.D. as Associate Dean, College of Business and Management.

For the past year, Shub served as Acting Associate Dean of the College of Business and Management. He began his career at Northeastern in 1985 as Associate Professor of Management, and has served as chairs for both the Department of Management (1986 to 1989) and the Department of Management and Marketing (1995 to 1997).

Shub has published more than sixty articles on the prediction of performance in higher-level management positions, the use of job analysis for human resource decision making, and personnel testing for productivity and counter productivity. He received his Ph.D. in Measurement and Evaluation and his M.A. in Social Psychology from Loyola University Chicago, and a B.S. in Psychology from the University of Illinois at Urbana-Champaign.

Prior to teaching, Shub worked for Science Research Associates in Chicago, Psychological Services, Inc. in Los Angeles, and National Computer Systems, Inc. in Minneapolis where he was a divisional vice-president and general manager. Shub is a licenced psychologist in the State of Illinois.

Northeastern Illinois University is a state-supported commuter institution serving more than 10,000 students. It is located at 5500 North St. Louis Avenue in Chicago.