

1-10-1994

## Independent- Jan. 10, 1994

Matthew R. Berg

Follow this and additional works at: <https://neiudc.neiu.edu/independent>

---

### Recommended Citation

Berg, Matthew R., "Independent- Jan. 10, 1994" (1994). *The Independent (1988-present)*. 116.  
<https://neiudc.neiu.edu/independent/116>

This Newspaper is brought to you for free and open access by the NEIU Student Newspapers at NEIU Digital Commons. It has been accepted for inclusion in The Independent (1988-present) by an authorized administrator of NEIU Digital Commons. For more information, please contact [neiudc@neiu.edu](mailto:neiudc@neiu.edu).



## Science building sickens students

by Betty Boduch

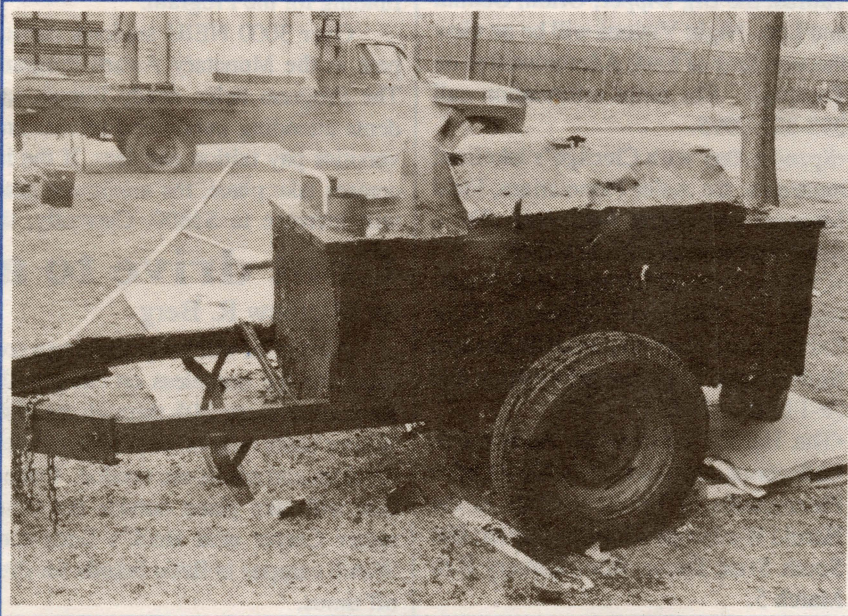
The recent repairs being done on the Science building has been linked to illness experienced by many faculty, students and staff.

Lucienne Mulvihill, Director of Health Service, disclosed that Health Service experienced an increase in the number of students visiting during the time period when "foul air" was reported in the Science building. She also stated that Health Service usually experiences an increase of students during final exams, and the number of complaints varies greatly from semester to semester.

On Tuesday, November 30, Health Service provided services to 50 students and on Wednesday, December 1, 60 students were treated. "Many of the students seen requested aspirin for headaches or pepto-bismol for gastric disturbances. Since none of the students reported that their illnesses may have been caused by the foul air in the Science building, the Health Service nurses did not know that there was any correlation of these facts. It now appears otherwise."

On Thursday, December 2, Dr. Charles Barber, History Professor, accompanied by his class, visited the University's Health Service department. Barber and more than half of the students present explained how the odors in the Science building had affected them, and the students who had complaints were interviewed and their testimonies placed on record.

Rebecca Atcha, a student in Barber's



Steve Fitzer / Independent

### How's this for air freshener?

history class testified that she had been feeling sick for about three weeks when she attended class in the Science building. She continued, "It usually happened on the main floor in the Science Lecture Hall. My symptoms consisted of severe headaches, nausea, hot flashes, dizziness and feeling very light-headed. Tuesday, November 30, was the worst..."

Donna Austin, R.N., a student in the same class, reported similar symptoms and said that her health problems began at the

beginning of the semester, but became worse. "The odor made me feel light-headed and nauseous. My seat in class is near an air duct and the smell was that of tar," she stated.

Earlier in the semester, two students were taken to Swedish Covenant Hospital as a result of the odor in the Science building, and these students were reported to have filed complaints against the general contractor.

As a result of the increased complaints, Mulvihill recommended that the air quality of the Science building be professionally

evaluated to determine the cause of the health problems.

According to Joseph Kish, Assistant Vice President for Facilities Management, the Capital Development Board was requested to have an air testing laboratory check the air quality in the building during roofing work. However, the request was processed after the main roof was done, so "at this time the air monitoring is not expected to be conducted, because the Capital Development Board decided that it wouldn't be prudent to spend the extra money," said Kish.

It was believed that the concentration of odors in the Science building was caused by fumes from a tar barrel entering placed near one of the three main air intakes in the building. Kish explained, "One of my men monitored the workers several times a day to insure that the barrel was not near an air intake, but during some days the wind shifted."

Gary Bryan, Director of Maintenance and Construction, stated that the general contractor has a contract with the Capital Development Board and then hires the subcontractors. "Because we are dealing with a state agency, NEIU does not directly control the project," said Bryan.

The Science building tuck pointing and reroofing project was scheduled to begin on March 22, 1993, under the general contractor Poulos Brothers Construction Co., Inc., according to a memo [Construction Notice, March 19, 1993] by Kish.

See "sick" back page

## IBHE to up tuition costs

by Craig Johnson

The Illinois Board of Higher Education (IBHE) proposed a three percent tuition increase for the 1994-1995 school year on January 4, 1994.

The IBHE staff recommended that public universities raise tuition by a maximum of 3 percent. The University of Illinois was exempted from the 3 percent maximum by the board. The U of I Board of Trustees voted last year to raise tuition 5.5 percent for juniors and seniors, and 27.5 percent for medical students. The Board of Governors (BOG) and Board of Regents have not yet taken action on any tuition increases. The IBHE proposals are only recommendations, and the governing boards of the universities have the final decision on tuition increases.

NEIU students will most likely learn how much, if any, tuition will increase after the BOG trustees meet on January 20th. The BOG oversees NEIU, Chicago State, Governors State, Eastern Illinois, and Western Illinois Universities. BOG chancellor, Thomas Layzell, quoted in the Chicago Sun-Times, said he expects his board to stay in the 3 percent range. A three percent increase in tuition will help universities keep pace with

the rate of inflation. With a three percent increase in tuition, NEIU students attending full-time will pay \$27.72 more per semester.

NEIU student, Hector Martinez, argues that it would be unfair to expect students to pay more in tuition. "The cost of everything is rising at NEIU, yet the level of service is decreasing," said Martinez.

Officials of the IBHE say that state funding of public universities is down 7.3 percent since 1970. The decreased funding has occurred as universities experienced increased enrollment over the same period. Decreased funding by the state has caused the NEIU administration to cut programs and not replace employees who have retired. Others victims include NEIU employees who have received only small pay increases over the period. "I have been at NEIU for thirteen years and the workload has increased, but pay increases have not kept pace with the rising cost of living," said one NEIU employee who chose to remain anonymous.

The IBHE also recommended that the state increase funding for public universities by 5.5 percent. This would be an increase of \$86.4 million over last years budget.

## Students ill-covered

by Michael Turner

NEIU students are covered by a health insurance policy which does not cover much of the hospital expense and does not compare favorably to other universities.

NEIU's full-time students are covered by MEGA Life and Health Insurance Company. All full-time undergraduates are automatically covered by the Student Health Insurance. This cost is included in their semester fees. Students who have health insurance of their own can complete a waiver and be excluded from coverage. Part-time and graduate students can also be insured under this plan along with their dependents.

The student health insurance fee is \$139.25 per semester and \$103.50 during the summer term. The maximum coverage students receive under this plan is \$10,000 per semester or \$20,000 per year. There are restrictions to the benefits a student can receive.

The health plan will cover room and board expenses for a semi-private hospital room at a maximum of \$225 per day for a total of 30 days. After that students are on their own and in almost all cases it would be necessary for them to bear the brunt of the expense. The University of Chicago Northside

hospital located on Lake Shore Drive and Wilson charges \$615 per day room and board expense for a semi-private room. The difference of \$390 per day must be covered by the student.

In a phone interview with Jodie Hernandez, NEIU representative at MEGA Life and Health Insurance, she explained that the company had "researched this and the room and board expense is along lines with the industry norm."

If a student is injured and requires emergency surgeries, the health insurance will only pay for the most expensive surgery. If a student needs more than one procedure, the other less expensive surgery will not be covered. The health plan will only cover \$1200 maximum in surgeon's fees. They will also only pay 25% of anesthetist fees.

Ambulance services are limited to \$100 and there is no dental coverage unless it is a result of an injury.

Physicals are not covered nor are regular visits to the doctor for such things as the flu or strep throat.

Pre-existing conditions are not covered

see "ill" page 3



Dick Simpson talks politics with NEIU student Tom Hall in the Commuter Center.

Matthew Berg / Independent

## A chat with Dick Simpson

by Thomas Hall

Dick Simpson, professor of political science at the University of Illinois, is running for the second time against incumbent Dan Rostenkowski. In Simpson's first attempt, he garnered forty-three percent of the vote against the incumbent. This November, Mr. Simpson hopes to defeat the machine politician.

An internship program is being offered through the NEIU Political Science department for three credits this spring. Interested students should contact Professor John Murphy for more information. The deadline for entry is January 17, 1994.

The Independent had the opportunity to interview Mr. Simpson on December 27. Mr. Simpson, please elaborate on the

internship program.

Through the Political Science department at Northeastern, students can take an internship and receive credit for one course. They become assistant staff members in charge of different divisions of the campaign and work directly with the overall staff of the campaign. It looks like, from the various universities, we will have about ten interns directing different components of the campaign.

How many interns are you looking for?

We would take as many good interns as we could get and use them in a variety of  
see "chat" back page



## The Cultural Corner

Compiled by Anastasia Epstein

- **January 10** - Classes Begin.
  - **January 17** - Martin Luther King Jr's Birthday. No classes.
  - **January 23** - 6:30 a.m., WTMX-FM (101.9). NEIU's radio show, Vantage Point, hosted by Dr. David Unumb. Topic: "The Illinois Central Story" guest Alan Lind.
  - **January 24** - Last day for a full refund of tuition and fees for Spring 94 classes.
  - **January 30** - 6:30 a.m., WTMX-FM (101.9). NEIU's radio show, Vantage Point, hosted by Dr. David Unumb. Topic: "A Nature Center in the City" guest Jennifer Browning Skosey.
  - **February 1** - 10:00 a.m., Commuter Center/Upper Level. Careers in retail management symposium and job fair. For further information contact the Placement Office, B-117 or 312-583-4050 x3119.
  - **February 4** - 7:30 p.m., Auditorium. NEIU Chamber Music Series presents members of the Vermeer Quartet with guest artist Andrea Swan, pianist.
  - **February 7** - Last day for a 50% refund of tuition and fees for Spring 94.
  - **February 11** - Abraham Lincoln's Birthday. No classes.
  - **March 18** - Last day to officially drop a course or withdraw from Spring 94 courses.
  - **March 21 thru 26** - Spring Recess.
- CURRENT EVENTS IN CHICAGO!!!!!!**
- Chicago Academy of Sciences, 2001 North Clark Street in Chicago is hosting a variety of exhibits and special events for the spring season. Included are field trips, children's programs, and teacher workshops. For information 312-549-0606.
  - "The Women of Hull-House and the Neighborhood in 1893," an exhibit hosted by UIC's Jane Addams's Hull-House Museum. Open Indefinitely. 800 S.

Halsted. "Free" - For more information contact 312-996-8405.

• **Adler's "Night Visions" Exhibit.** The Adler Planetarium's newest exhibit uses a series of seven hands-on modules to teach visitors how to "read" the night sky and recognize such constellations as Taurus, the Big Dipper, Orion, Gemini and Leo. Night Visions will be on view through June of 1994. Admission free on Tuesdays. For more information call 312-322-0995.

• **Spend a Day with Chicago's lakefront museums:** the Adler Planetarium, Field Museum and Shedd Aquarium. For a free brochure call 312-322-8859.

• **Chicago Cultural Center, 770 E. Washington St., Chicago** will host a Major Exhibition of Narrative Flags & Banners from Ghana. For more information dial "F-I-N-E-A-R-T."

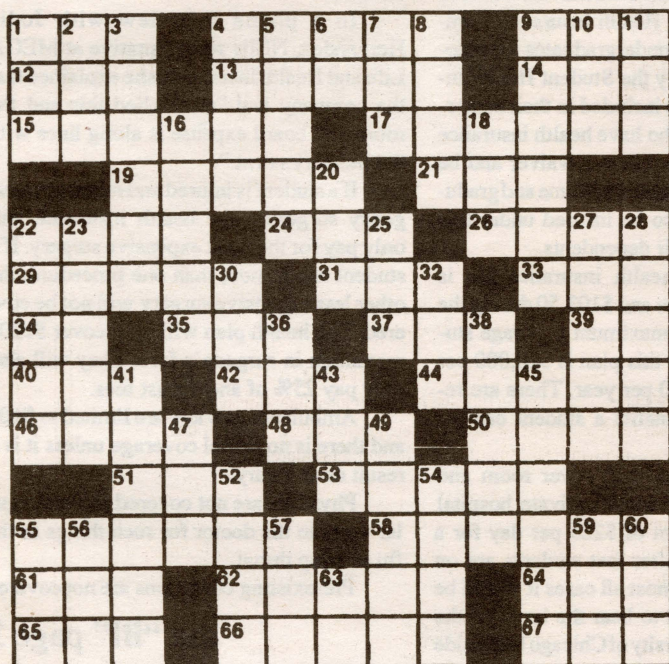
• **The Harold Washington Archives & Collections** is sponsoring the Civil Rights Photographs of Ernest Withers at the Harold Washington Library Center, 400 South State Street, from January 8 to March 5.

### PUBLIC SERVICE ANNOUNCEMENTS

• **The Chicago Teachers Center (CTC)** 770 N. Halsted, presents "Student Night." Wednesday 5:00-8:00 p.m.. Students are encouraged to bring in projects. Resources, materials, and equipment will be provided. NEIU students free. For more information contact David Sperling 312-733-7330.

• **WYCC-TV/Channel 20** is Chicago's PBS-educational station owned and operated by the City Colleges of Chicago. Telecourses for college credit are offered as well as a variety of programs for all ages. Consult your daily newspaper for television listings. For more information about the telecourses call 312-553-5970.

## The "Super" Crossword Companion



64. Snake-like fish  
65. Friend  
66. Claw  
67. Male sheep
- DOWN**
1. Toward (Naut.)
  2. Promise to pay
  3. Of the teeth
  4. Land measure
  5. Demise
  6. Eastern state (abbr.)
  7. Pertaining to (suffix)
  8. Pitfall
  9. Physician
  10. Direction (abbr.)
  11. Each
  16. Compact
  18. Numbers (abbr.)
  20. Bale contents
  22. Black
  23. Verandah (Hawaiian)
  25. Males
  27. Foundation
  28. Brief quarrels
  30. Appendage
  32. Day of week (abbr.)
  36. Rodent
  38. Festivals
  41. Vertebral

### ACROSS

1. Help
4. Confess
9. Dependent (abbr.)
12. Enemy
13. Hardwood tree
14. Low number
15. Arctic treeless area
17. Warrior with weapon
19. Hard enamel
21. Kettle
22. Dash
24. Pig meat
26. Cries
29. Lightweight wood
31. Affirmative
33. Knock
34. Preposition
35. Mistake
37. Annoy
39. Without date (Library, Latin)
40. Airport code in Bahamas
42. Atlas
43. Implied
46. Interjection of dismay
48. Flap
50. Not as much
51. Anger
55. Giant
55. Movie
58. Snuggle
61. America (abbr.)
62. Likeness
43. Tap gently
45. Midpoint
47. Ever (poetic)
49. Game
52. Erupt
54. 13-year-old
55. Drinking vessel
56. Book of Bible (abbr.)
57. Doctor's group (abbr.)
59. Meadow
60. Tree
63. Capone

## More money granted by ISAC

by Craig Johnson

The Illinois Board of Higher Education (IBHE) staff recommended increases for student financial aid for the 1994-1995 school year. The IBHE staff proposed a 14.1 percent increase for the Monetary Award Program. The increase amounts to 30.1 million in additional funding for the Program.

Over 3000 NEIU students participate in the Monetary Award Program. The Program helps needy Illinois students attending public and private universities pay tuition and fees. If the increases take place, the maximum grant will increase to \$3800. Currently, the

maximum received by NEIU students is \$1089, if they attend on a full-time basis.

Last year, 178,000 applicants in Illinois were eligible for grants, but only 140,000 students were able to receive grants. With the increase in funding, more students can receive grants.

Students who receive Pell Grants from the federal government can expect to receive less from the program. Because of federal government budget constraints, the maximum amount a student can receive from the program will decrease by \$50.

## Coat drive to assist homeless

by Matthew R. Berg

Alpha Chi will be sponsoring a coat drive for the homeless on campus the week of January 24th through the 28th. Winter coats in good condition for both children and adults are needed. Collection will take place outside the Commuter Center near Beck's Bookstore. Watch campus bulletin boards for drop off times.

Alpha Chi is organizing this drive in conjunction with the Honors Program Seminar being offered this spring entitled, "The Politics of Hunger and Homelessness." Alpha Chi will arrange for the collection of winter coats, and those involved directly with the Seminar

will handle the distribution to the homeless.

Alpha Chi is a national honor society created at Southwestern University, Georgetown, Texas, in 1915 as a campus honor society whose objective was to develop and further the recognition of scholarship. Since its conception, it has grown to a national society with almost 300 participating institutions. The Illinois Zeta Chapter was organized in 1922, and has been an active part of the NEIU campus since 1982. Inductees into Alpha Chi are comprised of undergraduates in the top 10% of their class and remain members for life.

## Student clubs and organizations

• **A.A.** - meets Wednesdays 12-12:50 in the AWG A108 and Thursdays 1:40-2:50 in CLS 3071. Meetings are closed. For prospective and current members only.

• **A.C.E.I.** - Association for Childhood Education International meets every third Thursday of the month at 1:40 in CLS 3044.

• **APOCALYPSE LITERARY ARTS COALITION** - meets Fridays 11:00 A.M. -12:00 noon E-041 or stop in anytime.

• **A.P.I.C.S.** - American Production and Inventory Control Society Inc., board meets first Tuesday of the month, guest speakers on second Tuesday of the month, 1:40 p.m. C.C. 217.

• **ART CLUB** - meets Thursdays, 1:40 p.m., B 119.

• **ASPIRA** - meets Thursdays, 1:40 p.m., S 112.

• **BLACK CAUCUS CLUB** - meets Thursdays, 1:40 p.m., CLS 3031.

• **BLACK HERITAGE CLUB** - meets on Tuesdays, 1:40 p.m., CLS 3031.

• **CHIMEXLA** - meets Tuesdays, 1:40 p.m., E 051.

• **CRIMINAL JUSTICE STUDENTS ORGANIZATION** - meets 11/12, and 12/7, 1:40 p.m., CLS 3003. Additional dates to be announced.

• **GAY, LESBIAN AND BISEXUAL ALLIANCE** - meets alternate Thursdays, 1:40 p.m., and alternate Fridays, 7:00 p.m. in A 108, ext. 3856.

• **EARTHSCIENCE CLUB** - meets on alternate Tuesdays, 1:35 p.m. and Wednesday at 3:00 p.m., call Marianne ext. 4014 for more information.

• **HELLENIC CLUB** - meets every Tuesday at 1:40 p.m., S-111.

• **INDEPENDENT** - Only the best newspaper in the world. Stop by anytime, E-049, or call 794-2812, or ext. 2812.

• **INDO-PAK STUDENT ASSOC.** - Meets every Wednesday at 2:00 in the Student Organization Conference Room which is located in the lower level of the Commuter Center.

• **INFINITY** - meets first and third Tuesdays of the month, 1:40 p.m., CLS 2031.

• **PHYSICS CLUB** - meets every third Monday of the month, 8:00 p.m. in S-233.

• **MANAGEMENT CLUB** - sponsors a variety of events on campus. For more information regarding membership, contact M. O'Malley at ext. 2648.

• **MUSLIM STUDENTS ASSOC.** - meets every other Thursday, 1:40 p.m., S 144, 1A.

• **NSAB** - Northeastern Student Activities Board meets first and third Thursdays, E 205, ext. 3859.

• **QUE ONDEE SOLA** - meets Thursdays 1:40 p.m., E 041.

• **S.C.E.C.** - Student Council for Exceptional Children meets on alternate Thursdays at 1:45 p.m. in CLS 3020.

• **THE SCI-FI CLUB** - meets on alternate Tuesdays, 1:40 p.m., CLS 2005.

• **THE SOCIOLOGY CLUB** - meets every third Tuesday, 1:40 p.m., CLS 2094.

• **SPANISH CLUB** - meets Tuesdays, 1:40 p.m., in CLS 2094.

• **STUDENT ENVIRONMENTAL ACTION COALITION** - meets every third Thursday of the month, 1:40 p.m., S 202.

• **STUDENT SENATE** - stop by E-210, above Beck's Bookstore, anytime.

• **U.P.R.S.** - Union of Puerto Rican Students meets Tuesdays, 1:40 p.m., E 041.

• **WSU** - Women Students United meets Thursdays, 1:40 p.m., A108, ext. 3302.

• **WILDRENESS CLUB** - meets first and third Thursdays, 1:40 p.m., S-111.

• **WZRD 88.3 F.M.** - stop by E 059 anytime.

## Classifieds:

**FREE TRIPS AND MONEY!!** - Individuals and Student Organizations wanted to promote the Hottest Spring Break Destination, call the nation's leader. Inter-Campus Programs 1-800-327-6013.



# Extension 200

Public Safety Concerns Compiled by Public Safety Officer Bob Paprocki



• **November 29 - Theft:** A pencil sharpener was reported missing from a room in the Science building. A loss of \$12.50. **Disturbance/fight:** A student and a staff member were involved in an altercation in the Commuter Center, but no charges were filed. **Theft:** A student reported leaving a payroll check of \$49.00 on a counter in the Library. When she returned an hour later the check was gone. A stop was put on the check.

• **November 30 - Mischievous conduct:** Graffiti was discovered in the Commuter Center men's room. A loss of \$20.00. **Criminal damage to property:** A student reported damage to the window of her automobile but was unsure if the damage was done on campus. A loss of \$100.00.

• **December 1 - Medical assistance:** A student refused medical attention after having a seizure. **Theft:** A student reported her book bag and books stolen. A man attempted to sell her books back to the bookstore but left without the books. A warrant was issued for his arrest. A loss of \$100.00.

• **December 2 - False fire alarm:** An alarm was activated in the Library. No fire or damage was found. A false alarm is classified as a felony. **Lost property:** A student reported losing her \$200.00 payroll check after being evacuated from the Library as a result of the false fire alarm. A stop was put on the check. **Criminal damage:** Graffiti was found on an NEIU building. A loss of \$20.00.

• **December 3 - Criminal damage to state property:** Curtains and seats were cut, and tabletops marked in the Library. A loss of over \$100.00. **Theft:** A student reported a beeper stolen. **Station information:** A student reported that his automobile was marked with a crayon. No other damage was observed. **Theft:** A faculty member reported two textbooks sent to and received by the University but not delivered. A loss of \$80.00. **Criminal damage:** A fire may have been started in a vent by unknown persons visiting campus for a dance. Damage has not yet been assessed. **Battery:** A non-student visitor was punched by two non-students at a dance in Alumni Hall. Both persons were arrested.

• **December 7 - Theft:** A student reported leaving her purse in a washroom for two hours, and when she returned it was gone. A loss of \$50.00. **Service to other police:** An off-campus robbery victim chased the offender onto campus where he was caught by NEIU police and turned over to Chicago Police Department 17th district officers.

• **December 8 - Disorderly conduct:** A faculty member reported receiving harassing phone calls from an unknown person. **Damage to property:** A student reported her auto damaged in the A-lot. **Station information:** A student reported being sexually assaulted off-campus. The offender was later arrested on campus. **December 9 - Disorderly conduct:** A staff member reported receiving several harassing phone calls on campus. **Disturbance:** A student refused to leave the main gym during a team practice time. No complaints were signed.

• **December 10 - Station information:** A student reported being followed to campus by a member of a friend's family. She was advised to use the escort ser-

vice. **Medical assistance:** A student was transported to the hospital after being injured in a class in the P.E. building.

• **December 12 - Battery simple:** A student was shoved by another student in the Library, but no charges were filed.

• **December 13 - Suspicious automobile:** An automobile with three occupants attempted to enter the campus while it was closed. A hand ax was confiscated, and the occupants released.

**Criminal damage to state property:** A student notified public safety about damage to a bulletin board. Repairs were made by a student. **Theft:** A wall clock and roll of tape were stolen from an office in the B-wing. A loss of \$30.00.

• **December 14 - Criminal damage to state property:** Graffiti was removed from the second floor of the Library at a cost of \$20.00. **Theft:** A student's book bag was reported stolen from the second floor of the Library. A loss of \$150.00. **Station information:** An employee notified Public Safety of a possible domestic problem on campus.

• **December 15 - Medical assistance:** A student became ill and was transported to the hospital. **Criminal damage:** Graffiti was removed from the B-wing at a cost of \$20.00. **Theft:** A student reported \$40.00 stolen from her purse which was in a room in the Classroom building. **Theft:** A contract company reported the loss of equipment totaling \$750.00.

• **December 16 - Accident/non-injury:** Two students were involved in an accident in the D-lot. **Accident/non-traffic:** A handicapped person reported being in an accident near the Science building. **Theft:** A student reported leaving his briefcase in the Library, and when he returned, it was gone.

• **December 17 - Criminal damage to state property:** A student reported a gym locker damaged while his personal property was within. **Mischievous conduct:** A faculty member reported swastika markings on an office door in the Classroom building. Similar markings have also been found in the Science building and other areas of the Classroom building.

• **December 18 - Theft:** A university visitor reported his wallet missing from a locked room.

• **December 20 - Theft:** A university visitor reported personal property missing from a bag which was left in an unlocked room.

• **December 23 - Medical assistance:** A staff member became ill and was transported to Health Services.

• **December 25 - Disorderly conduct:** A written bomb threat was found in the Classroom building, and a search was made, but no device was found.

• **December 27 - Suspicious person:** A door was found propped open in the Science building. Later, a faculty member who had not followed University policy was discovered in the building.

• **December 29 - Mischievous conduct:** A faculty member found her office door ajar after she had been off campus for a week.

"ill" continued from front page

by this health plan unless you have been enrolled in the health plan for a year.

NEIU Health Services Director Lucienne Mulvihill explains, "This insurance policy is not meant to be a student's primary coverage. It's only meant to help students get over the rough hurdles." When asked why this policy was chosen over others, Director Mulvihill stated that various policies are first looked at in Springfield and then sent to Northeastern where they are further reviewed by the Health Services Director, Director of Student Services and other administrative officials. "This was the most coverage for the best price we could find," said Mulvihill.

In order to compare coverages, Chicago State University (CSU), a Board of Governors University similar to NEIU, was chosen. CSU doesn't have mandatory coverage for full-time students. The University also has a \$15,000 maximum coverage per year and students can choose to pay a yearly fee of \$352. Compared to NEIU's yearly fee of \$382, the CSU coverage is cheaper, and since NEIU is limited to \$10,000 per semester, it also covers \$5000 more.

Chicago State's coverage has a sliding scale for the first \$1000 of expenses, and after that the coverage pays for 80 percent of all expenses up to the \$15,000 maximum.

When this comparison was explained to Director Mulvihill, she stated "if students aren't happy with their health coverage, they can petition and explain they want more and better coverage. The administration could view this and decide to change it's health plan." Director Mulvihill further explained that NEIU charges per semester, as opposed to yearly, "because it's easier."

Nolan Davis, Vice President of Student Government, said "This coverage isn't sufficient, but it is the best for the fee we're paying." He continued, "We should not have mandatory coverage but offer perhaps 3 different levels of coverage for different fees and then let the student choose." Vice President Davis would like to see a Doctor hired as part of the Health Services on campus, and the University should implement an infirmary for students. "The purpose of the Health Care plan is to supplement another," explained Davis, "but if students don't have another plan, how can this one supplement it? We should have both a supplement and full care coverage offered."

Director of Health Services Mulvihill advises students to call the 1-800 number at MEGA Health and Life and ask questions pertinent to their situation before utilizing their health care coverage.

Pamphlets explaining the health plan the University offers are available in the Health Services office. The number for MEGA Life and Health Insurance Company is 1-800-237-0903.

**TAKE A BITE OUT OF CHICAGO... WITH A TASTE OF DEPAUL!**

**OUR SUMMER MENU IS FULL OF SPECIALS!**

\* **GREAT CLASSES.**  
Earn transferable credit including Year-in-a-Summer courses in Spanish, Physics and Calculus in just ten weeks. And a full range of courses in business, computer science, education and liberal arts and sciences. Attend one or two five-week sessions starting June 15th.

\* **GREAT LOCATION.**  
There's nothing so alive as Chicago in the summertime: Chicago's annual jazz festival, expansive beaches, neighborhood festivals, the Cubs and White Sox, nightlife and restaurants galore!

\* **GREAT PRICE.**  
Live on campus for \$20.00 a week if you enroll for two courses during either 5-week session...in Chicago's trendiest neighborhood, in our newest, air-conditioned dorm, with semi-private baths, and full kitchens on every floor.

**THE HEAT IS ON! WE ONLY HAVE 200 SPACES. RETURN THE COUPON BELOW TODAY.**

**OR CALL 312-362-6709 AND ASK FOR INFORMATION ABOUT LIVE & LEARN AT DEPAUL THIS SUMMER.**

Please rush me information about DePaul's Live & Learn Program.

Name _____		SSN _____
Current School _____		
School Address _____		School Phone _____
City _____	State _____	Zip _____
Home Address _____		Home Phone _____
City _____	State _____	Zip _____

Current Year: ☐ Freshman ☐ Sophomore ☐ Junior ☐ Senior ☐ I am interested in living on campus for \$20.00 a week.

Mail this coupon to: DePaul University, Summer School Admissions, 1 East Jackson Blvd., Room 9100, Chicago, IL 60604-2287



## Editorial

"And miles to go before I sleep...And miles to go before I sleep." Robert Frost's immortal words mean far more than a single night without rest. It is a statement on his feeling of good old fashioned responsibility. He has miles to go before he sleeps because "I have promises to keep."

How many people would hole up and take a nap despite their promises? Not this person though, he/she refuses to stop in the snowy woods and rest. He/she has the will to keep moving. It is this grade of man or woman which keeps this great country rolling down the road of success. They are the foundations of our society. This person tows the line while others coast. When something has to get done, when the job is on the line, our guide pushes the limits of endurance. Why? Responsibility. If those promises are not kept, the walls will come tumbling down, things will not get done.

Our ordinary person never worries about these promises because they are simply words, empty, devoid of any meaning. They do not see the whole vast configuration of things. They are not able to comprehend the significance of each individual promise.

There is an essential element to every promise which should never be underestimated. This is the importance of the being honest with oneself. Once you have attained this, "thou canst not then be false to any man."

If we all keep our promises, perhaps we may all be able to enjoy those "lovely, dark and deep woods" on that snowy evening. Think about this when you make, or break, your New Years resolutions.

## Some reassuring words from the Provost

Northeastern Illinois University, in accordance with a 1987 statute, insures that all persons providing classroom instruction to students are proficient in oral English. If an instructor's oral proficiency is in

doubt, students should contact the department chair to obtain information about the University's procedure for handling complaints.

**Salme Steinberg,**

**Provost**

## Nothing succeeds like success

I read with interest the sports editorial in the 12-6-93 issue of the **Independent**. You are aware that your complaint is not a new one.

My family and I have been attending basketball games for the past four years. Never once have I seen President Lamb at a game. Wasn't it his idea to quickly bring NEIU into NCAA Div. 1 competition? At my daughter's high school, either the principal or the assistant principal shows up at every game, men's or women's.

Without going into details concerning the demographics of the stu-

dent population at NEIU, remember that it is a commuter school. Few stay on campus when they have no classes. In addition, the school maintains a rather low profile in the community. I lived in Chicago for over ten years before I realized there was a university within walking distance of my home.

Most important, however, is the understanding that "nothing succeeds like success." When the teams start winning consistently, more fans will show up.

**Gary Chuvén,**  
class of 1991.

## Letters to the Editor

### Let my dolphin go

I must write in response to the editorial about the protesters blockading the entrance for captured dolphins who had been uprooted for the Shedd aquarium. This person comes to the conclusion that just because people care about animals, they don't care about hungry and homeless people. The two are certainly both noble causes as well as being related. Many people support human and animal rights issues, and they realize that much of the ill-treatment of humans stems from abuse and neglect of other sentient creatures.

This person is obviously ill-informed about the mundane, frustrating, lonely lives of captive animals such as dolphins, even though the writer states that "education is extremely important." I quote, "If we wish to instruct society on the wonders and beauty of nature, it is necessary to keep some animals captive." This

is a contradictory statement, in that you will not find beauty of nature in a jail with walls and bars which was constructed by a human! Yes, society should be able to appreciate nature, but to do this one must be in nature and not in an artificial environment. Viewing captive animals only tells people that it is OK for people to yank sentient beings out of their habitats and rob them of instinctual practices just because we can, and because those who don't know any better think that this abuse is entertainment.

A captive dolphin is confined to a space that is but a tiny fraction of his natural environment, separated from family and is doomed to repetitive circles and "tricks" in a chlorinated coffin. No, they don't face any perils of the wild, but they must be well-equipped to deal with these dangers or else they wouldn't have lasted all these years.

The protesters are actually doing a service for all wild dolphins, as well as for every other species, by letting people know that it is not OK to traumatize them by taking away their natural lives and caging them for our enjoyment and "appreciation."

I must also mention that I am graduating this semester and am very glad I will not be inside the Science building. Just knowing that I was so close to the barbaric, inhumane, not to mention outdated, practices of NEIU regarding experiments on live and dead animals, is absolutely repulsive. I hope NEIU gets with the times soon and stops these cruel and unnecessary rituals for the animals and the students who are being taught complete disrespect for life.

Someone who cares,

**Ardis Karr-Robcek**

## Good journalism or crap?

This is in regards to the "Women stay home with the kids" Voice of the **Campus** piece appearing in the November 22, issue of the **Independent**.

First of all, I would like to ask William what rock he has been living under for the past pathetic years of his existence?

Secondly, I'd like to ask William how he thinks it is possible to survive in these tight economic times with only one parent working outside the home.

Our lovely author has created this perfect little dream world where money is plentiful and a taintless mother takes care of her children in a state of undying happiness. The mom has no other wants, needs or desires except for the happiness of her children.

Nice story, right?

Unfortunately this is not a reality. Children are abused by their own mothers and fathers on a daily basis. This stuff doesn't just happen in day cares. Children are beaten to death, left in garbage cans, abandoned, molested, and murdered by their own parents! Have you seen this William? Or did you miss this part of the news?

Women have goals and dreams also. We should not have to disregard these for our children and "the home."

I am not trying to disrespect women who do stay home with their kids. If you want to do this, great, do it! I only object when someone makes this idea a decree for all women to follow and adhere to.

William, if you have a problem with this issue, why don't you stay home with the kids? You seem to have all the answers to a perfect child figured out already.

My last question is for the staff of the **Independent**. This is a college newspaper. College students are supposed to be progressive, open to new ideas, and...gasp...possibly even a bit intelligent? You have the right to omit any letters you receive, so why do you print such mindless trash? Although there is a fine line between censorship and freedom of speech, there is also a fine line between good journalism and crap. (I used to work on our school paper in high school, trust me, I know.) Are you that desperate for student input?

**Wendy M. Joice**

## Independent

Room E-049, 5500 N. St. Louis Avenue, Chicago, IL 60625  
312-794-2812

The student newspaper of Northeastern Illinois University is published every two weeks except during final examinations and semester breaks. Letters to the editor are encouraged, but must be signed by the author. "Name withheld by request" can be added by the editor. Letters should be typed, or clearly written, and limited to about 200 words. We reserve the right to edit or omit any letters received. Deadline is the Friday ten days before the issue in which a contribution will appear.

**Editorial Board:** Editor in Chief: Matthew R. Berg, Business Manager: Betty Boduch, Sports Editor: Joseph D. Yovino, Calendar Editor: Anastasia Epstein, Photo Editor: Steve Fitzer, Music Editor: Sasha Gerritson.

**Staff Members:** Juan Fernandez Saines, Raun Gallegos, Joan Plotkin, Craig Johnson, Thomas Hall, Sarah Azooz, Tahira Perveen, Michael Turner, Brian Culhane and Alex Jomarron.  
Faculty advisor: Timothy Scherman



# Voice of the Campus

The opinions expressed on this page are those of members of the university community, and do not necessarily coincide with those of the editorial board of the Independent.



## Smart Alex

by Alex Jomarron

I was shopping at North Pier over the holiday break and decided to quench my thirst. I walked into Dick's Last Resort, ordered a Grolsch, then stared at the brassieres which were suspended over the bar. The big red one with the five rear hooks was particularly captivating. While scanning the list of beers offered, I came to the realization that Grolsch and Tsingtao are the only beers, when pronounced correctly, could cause the bartender to suspect you've had too many. Maybe that's why drunks always order Bud. Tough to screw that name up.

Refueled, I got up to leave and continue my shopping spree. On the way out, I read the graffiti which adorned the place. The messages were much

more clever than here on campus. In fact, everything I saw was spelled correctly. Perhaps this was due to Goldcoast graffiti spellcheck. One message really caught my eye. Printed in black, it read, "Jesus Saves." Below it, in cursive, it continued, "but Gretzky gets the rebound and SCORES!" I can just hear Pat Foley screaming these exact words. This brought back many memories of my dealings with those that carry "the message."

If I had a dollar for every time I've been approached by these do-gooders, I'd be basking in the sun on some South Pacific beach, faxing this in. The encounter usually starts with, "Have you been saved?" or "Do you know Jesus?" To that I've replied, "I know a Jesus that works at Denny's." This generally gets rid of all but the most ardent zealots. The ones that stay are on a mission that rivals any hype you have ever heard from the most enthusiastic Amway zombie. It's these people who really bug the hell out of me. Come to think of it, maybe that's what they are literally trying to do. Like the Amway member, these people think they have all the answers. The only difference is the message, economic prosperity or eternal life. Gee, if you are a business major, they seem perversely related.

Recently, on a cross-country train trip, I came across one of these guys. I asked him what made him so sure that he was right. He told me that he just knew. Unsatisfied, I lied and told him that on the way out I encountered a Buddhist who told me the same thing. In fact, I added, he claimed that Buddhism was older than Christianity. His response was simply that those guys were full of it. Yup, that was a convincing argument.

History is full of atrocities that were acted on in the name of some deity. Cortez wiped out the Aztecs while marching with Christian banners. The Puritans moved the Indians off the land in a skewed version of Divine Right. The Crusades turned out to be a particularly bloody road trip. The African slaves were given doses of Christian doctrine that were conveniently missing the "all men are created equal" part. Currently there are missionaries in third world countries teaching indigenous people how to thrive. In exchange for farming and construction techniques, the people are converted "for their own good." It appears that those distinct cultures are being destroyed in order to make them more like us. It's funny how history repeats itself. These third world people, like the Native Americans before them, see these missionaries with all the new gadgets, and think, with all that futuristic stuff, the Gods must be on their side, so we had better listen. Fear plays a big role here, mortal fear and fear of the after life.

Next we have the extensively debated abortion issue. The fundamental difference here is, the pro-choice advocates want to make individual choices. The pro-life advocates want to make everyone's choices. The pro-lifers have justified murder and sabotage to impose their position. I have never heard of a Pro-lifer forced to have an abortion. It simply is a power struggle. I would have loved to have attended the recently held religious summit here in Chicago. With all the potential disagreements about who indeed held the truth, I bet it resembled Wrestlemania. I imagine that if you are practicing a religion, it must be very important to you. The question is, why do people want to run roughshod over someone else's beliefs? I haven't seen any atheist groups recruiting at the airport. Nor can I remember being told that it was best to remain independent.

I guess I'd rather control my own puck.

## The way things were

I would like to clarify and add some points to those Joan Plotkin made in her article on November 8, 1993 regarding the Testing and Assessment Center.

I am a senator in Student Government here at NEIU, and I believe that I played a large role in presenting the situation of the Testing and Assessment Center to the Administration.

On Monday October 18, 1993, I was on my way to sign up for the English Competency Exam (ECE) when I stopped at the Student Government office where I sat down to speak to President Harold Hutchings. He made me aware of a situation that was going on in the Testing and Assessment Center. President Hutchings stated that the new director, Dr. Michael Johnson, was implementing policies and procedures that were unapproved by the University and that it impeded students instead of helping them. I asked President Hutchings where he had obtained this information and he told me from Dr. Angelina Pedrosa. I saw the letter that Dr. Pedrosa wrote and explained to President Hutchings that I was on my way to register for the ECE.

I went over to the Testing and Assessment Center where I waited in a long line. I observed the treatment the students were receiving. There was a young woman who had failed the ECE and was requesting to take it again before pre-registration. The director's assistant responded rather rudely, that it was too bad and that she had signed a contract stating it was her responsibility to have obtained the proper prerequisites to take the ECE and upon not taking the test or failing, the individual would be given a testing hold not allowing the student to register through the touchtone system for the next semester. The young woman said that it wasn't fair, and stormed out of the office.

When it was my turn, Dr. Johnson was present at the registration desk. He and his assistant both told me I had to sign the form the young lady did. I told them that I refused to sign a document that put a responsibility, which is his to begin with, on myself, and that allows him to block my registration. Dr. Johnson became very angry and raised his voice to me in front of all the students and said that these were the policies of the University, and if I didn't want to sign the form, I could leave and come back when I have changed my mind. He also told me that he would block my registration for Spring '94. I would not be allowed to take the ECE unless I signed. I explained to him that this was an illegal contract he was forcing students to sign and that these were not the present policies and procedures of the Testing and Assessment Center. He told me I was wrong. So I left very angry.

I went to see Dr. Pedrosa in her office where I explained to her what had happened. She could not believe that an administrator would treat a student in this rude manner. Dr. Pedrosa phoned Dr. Murrell Duster, Provost of the University. I spoke with Dr. Duster and explained the situation. She assured me that the administration was not aware of the action of Dr. Michael Johnson and that it disturbed her. She told me that she was meeting with Dr. Johnson and his direct supervisor the next day, and that it would be resolved before the end of the week.

I returned to the Student Government office and spoke to President Hutchings and told him what had happened. Together we came up with a flyer requesting a boycott of the Testing center and the demand for Dr. Johnson's resignation. Had we not "waved torches" and moved as quickly as we did, many students would have been hurt because pre-registration was only about 2 weeks away.

Senator Michael Turner, being a fair and honorable man, went to speak to Dr. Johnson about the situation, but the problem was that he went to speak to him after the fact, about a week later. Dr. Duster had already put pressure on Dr. Johnson and he was told to remove the unapproved policies from his office.

Dr. Johnson very quickly made a turnaround. Senator Turner was not there when everything was going on.

As of Wednesday October 27, 1993, all unauthorized policies and procedures were officially removed from the Testing and Assessment Center, many more testing dates were added to make the ECE more accessible to all students, and the center extended their hours.

We as student representatives see this to be victory for the students, and I would like to thank those individuals that made this possible, especially Dr. Angelina Pedrosa and President Harold Hutchings.

In closing, I would like to add that the Ad Hoc committee under Senator Gary Goldblatt still exists and is continuing to do a follow-up investigation on the situation to assure students that this will never happen again.

by Carlos Plazas

## Smells of hypocrisy

Apathy is not a new issue for college students, but it creates a dangerous situation when people are made to feel ill from headaches and nausea. On December 2, Dr. Barber gathered his class on the first floor of the Science building. Our departure from history questioned what our class would both see and hear as excuses for the real issue, the sulfuric stench we had smelled for several weeks during the semester. As we marched off, no one knew what to expect from our professor; however, he was clearly determined to use the session to illustrate our democratic rights.

As we met the cold, nervous stares of those administrators we confronted, it reminded me of a "60 minutes" documentary that exposed some terrible "truth" no one wanted to own up to. In this case, the culprit was hydrogen sulfide. According

to toxicologist, Dr. Timothy Erikson, the roofing substance contains cyanide, a chemical that deprives the body of oxygen. Short term exposure is not dangerous, but in a poorly ventilated room, over several weeks, everyone is at risk.

Following our discussion with the nurse at Health Services, we discovered that 110 people had been treated. Then, a few young women in the class shared concerns about future pregnancy. One male student faced more serious consequences, his asthmatic condition was highly sensitive to the environment. The confession of yet another student revealed an episode in which she passed out after class, but said nothing because she hadn't thought to relate it to her surroundings. The only reason a verbal complaint had not been made sooner among our group was because no one was comparing head-

aches!

Later our class descended on the Office of Student Affairs. Dr. Barber urged those with more serious complaints to provide affidavits. As uncomfortable as some of the students were to get personally involved, you can't walk away from this without understanding "why" people need to care about potential problems, such as this. No one should be apathetic about an environmental issue such that sends two people to the hospital! In order to effect change, a person has to be an active participant.

Finally, in the office of the Vice-President of Administrative Affairs, we were getting answers. Although his response made us angry, at least he admitted to knowing that the process of roofing would create "some discomfort."

In the last week of class, Dr. Barber was provided an alternate meeting site. At the same time, the "breaking story," in the news related the evacuation of an elemen-

tary school in the western suburbs due to fumes from roofing toxins. The irony is just too rich! The same hypocrisy could be said to include "environmental concerns" for a "smoke-free campus." As for the "car-pool for cleaner air" campaign, this year the clean air act is mandatory! The northeast section of Illinois must reduce its emissions by 15% by 1996. Why does it have to become enforceable by law before decision-makers take responsibility?

If the administration really wanted to earn some trust, they might consider testing the air quality in time for the Spring semester. Although construction is still in the air, before the dust settles, I'd like to think that the staff that works in the Science building would have the good sense to learn from Dr. Barber's discovery before any further poor health conditions inflict even one individual!

by Carole Goodfriend



# The Movement Reexamined: Where do we go from here?

Tuesday, Jan. 18

1:40 PM • Auditorium

## "The Meeting"

A play about an imagined meeting  
between MLK and Malcolm X  
Remarks by Jacob Carruthers  
(Associate Director, Center for Inner City Studies)

3:30 PM

Room CC216

Reception



The only known meeting between Malcolm  
and King after a 1963 press conference.  
Only a few words were exchanged.

Wednesday, Jan. 19

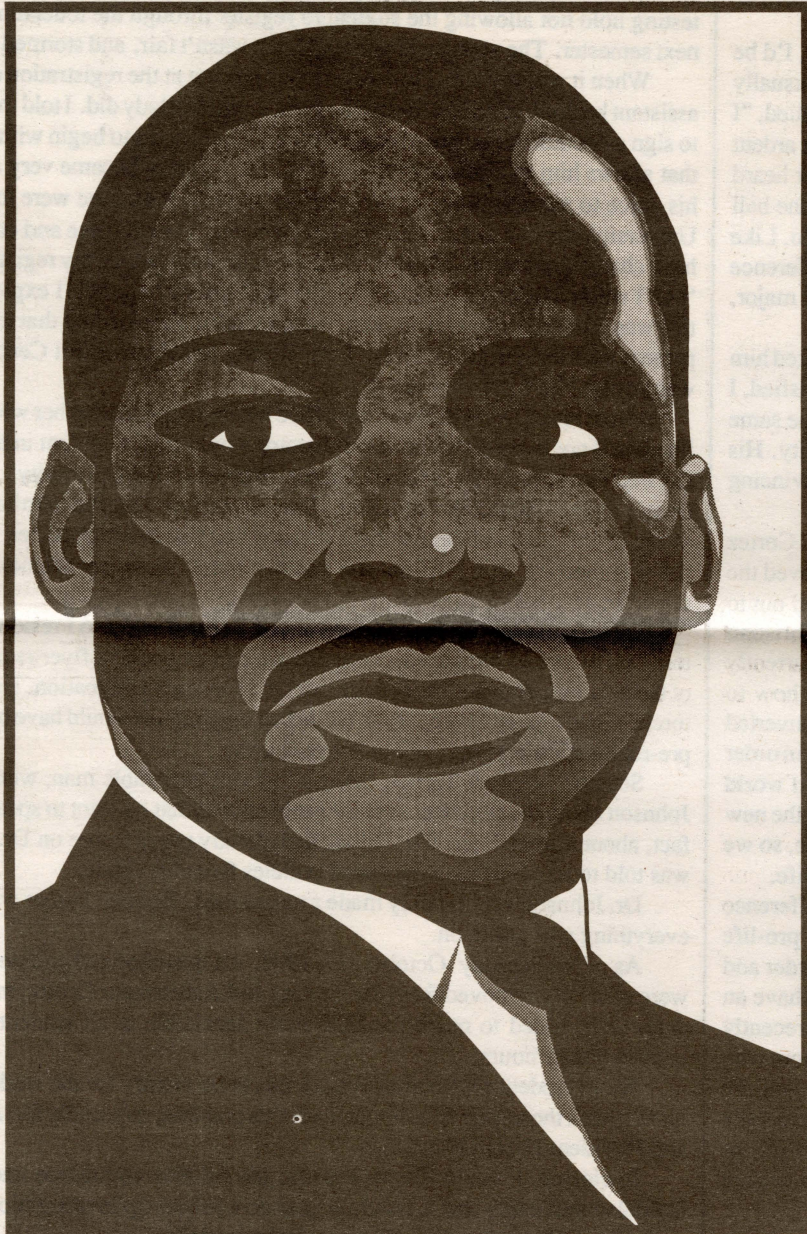
10 AM - 2 PM

CICS Student Lounge &  
Main Campus Cafeteria  
Documentaries  
about MLK

## Martin Luther King, Jr. Week

Jan. 18-21, 1994

**N** Northeastern  
Illinois  
University  
Board of Governors Universities



Muntu Dance Theatre

Friday, Jan. 21

10 AM - 2 PM

CICS Student Lounge  
Documentaries

2 PM

CICS Auditorium

Muntu Dancer Theatre

3:30 PM

CICS Student Lounge  
Reception



Jesse L. Jackson Jr.

Thursday, Jan. 20

1:40 PM • Auditorium

Jesse Jackson, Jr.

"Keeping the Dream Alive:  
The Next Generation"

3:00 PM

Room CC216  
Reception

Funding for MLK Week activities has been provided by: Student Government, NSAB, Black Heritage and Black Heritage Gospel Choir  
Shuttle bus will be making trips between NEIU Main Campus and CICS. For more information contact Tony Courier at (312) 583-4050 x3865  
Northeastern Illinois University • Main Campus: 5500 N. St. Louis Ave. • CICS: 700 E. Oakwood Blvd.



Sports editor Joseph D. Yovino

SPORTS

NEIU competes at the Division I level in the East Coast Conference

Women start strong

by Joseph D. Yovino

The holiday season was good to NEIU's Women's Basketball Team. The Lady Eagles have won seven out of their last nine games by an average of nineteen points. First year coach, Denise Taylor, has her team off to a record of seven wins and five losses which is their best start since moving to the Division I level.

The Lady Eagles started December by finishing in first place at the Buffalo University Tournament in New York. NEIU opened the Tournament by defeating the University of Akron, 71-66. Sophomore Guard Jeannie Hinkey scored a career-high thirty points and also led the team in rebounds with ten en route to NEIU's victory. The team then defeated host Buffalo University by eighteen points (83-65) in the second round of the Tournament giving NEIU the first place finish. Hinkey was named the Tournament Most Valuable Player and also named player of the week (Nov. 28-Dec. 5) in the East Coast Conference with forty-five points in the two-day Tournament.

NEIU then returned home to destroy Division III National Lewis University 97-55. Hinkey again led the team with twenty-one points. Senior Shelly Hurst also scored twenty points on six three-pointers. Senior Cyndie Donner pulled down a game-high thirteen rebounds. National Lewis com-

mitted twenty-eight turnovers leading to forty-one NEIU points. The Lady Eagles shot over fifty percent from three-point range giving the team an easy victory.

The University of Wisconsin Badgers then handed NEIU their first loss in five games by beating the Eagles 85-47. Hinkey led all scorers with seventeen points, while Senior Cathy Fowler and Senior Pam Osterbrink led the team in rebounds with five apiece.

NEIU then returned home to defeat the University of Milwaukee-Wisconsin by three points, 57-54. Hinkey led the team in scoring with sixteen points and also pulled down a team-high seven rebounds.

The Lady Eagles then resumed Tournament play in the Dial Classic at Auburn University in Alabama. In the first game, NEIU faced number sixteen-ranked Auburn University. Pam Osterbrink led all scorers with seventeen points in a losing effort. Auburn defeated NEIU 80-47. The Tigers shot over fifty percent from the field and out-rebounded NEIU fifty-one to twenty-four. In the second round of the Tournament, the team defeated the University of West Virginia 75-59. Once again, Hinkey led all players with a game-high twenty-four points on fifty percent shooting from the field and was named to the All-Tournament Team. The Lady Eagles

finished the Tournament in third place.

NEIU then began a three-game homestand by crushing the Lady Billikens of Saint Louis University 90-72. The team set two new school records in their victory. NEIU shot almost seventy percent from the field in the first half of the game on twenty-five of thirty-six shooting. The Lady Eagles hot hand continued in the second half setting a school record of sixty percent shooting from the field for the entire game, (40-68). Pam Osterbrink led the hot-shooting team with twenty points while DeAnn Williams contributed nineteen. The Eagles

led by as many as thirty-one points in the second half and had five players in double figures.

The team upped their home winning streak to four games by handing the Chicago State Cougars their tenth loss in eleven games. NEIU jumped out quickly by scoring the first eleven points of the game en route to a 75-55 victory. Hinkey scored the game's first six points and led all scorers with fourteen points. NEIU made five of eight (.625) from three-point range. The victory over the Cougars gave the Lady Eagles their first win in the ECC.

THE AP TOP 25

The top 25 teams in the Associated Press media poll, with total points based on 25 points for a first-place vote through one point for a 25th-place vote (first-place votes in parentheses) and ranking in the previous poll:

Team	Record	Points	Prev.	Bowl Results
1. Fla. St. (46)	12-1	1,532	1	Beat Nebraska
2. Notre Dame (12)	11-1	1,478	4	Beat Texas A&M
3. Nebraska	11-1	1,418	2	Lost to Fla. St.
4. Auburn (4)	11-0	1,375	5	Season ended
5. Florida	11-2	1,307	8	Beat W. Virginia
6. Wisconsin	10-1-1	1,228	9	Beat UCLA
7. West Virginia	11-1	1,090	3	Lost to Florida
8. Penn State	10-2	1,074	13	Beat Tennessee
9. Texas A&M	10-2	1,043	7	Lost to ND
10. Arizona	10-2	992	16	Beat Miami
11. Ohio State	10-1-1	971	11	Beat BYU
12. Tennessee	9-2-1	870	6	Lost to Penn St.
13. Boston College	9-3	817	15	Beat Virginia
14. Alabama	9-3-1	685	18	Beat N. Carolina
15. Miami	9-3	611	10	Lost to Arizona
16. Colorado	8-3-1	574	17	Beat Fresno St.
17. Oklahoma	9-3	521	19	Beat Texas Tech
18. UCLA	8-4	460	14	Lost to Wisc.
19. North Carolina	10-3	447	12	Lost to Alabama
20. Kansas State	9-2-1	444	20	Beat Wyoming
21. Michigan	8-4	397	23	Beat N.C. St.
22. Virginia Tech	9-3	321	22	Beat Indiana
23. Clemson	9-3	164	24	Beat Kentucky
24. Louisville	9-3	159	25	Beat Mich. St.
25. California	9-4	79	—	Beat Iowa

Others receiving votes: Southern Cal 46, Indiana 21, Cincinnati 9, Fresno State 5, Michigan State 4, Arizona State 2, Virginia 2, Washington 2, Kentucky 1, Utah State 1.

Athlete of the week

**Name:** Jeannie Hinkey  
**Hometown:** Aurora, Illinois  
**Graduated from:** West Aurora High School  
**Age:** 19  
**Sport:** Women's Basketball  
**Athletic achievements:** Has led NEIU in scoring seven times this season. Leading scorer in the East Coast Conference averaging 18.2 points per game. Named Buffalo University Tournament Most Valuable Player earlier this season. Also named to the All-Tournament Team in the Dial Classic at Auburn University earlier in the season. Started final fourteen games



Steve Fitzer / Independent

as a Freshman last year. Was fifth in scoring with a 6.4 average per contest last year. Also was second in rebounding for the team last season. Named to the third-team All-State Team in High School. Was also named to the Upstate Eight All-Conference Team as both a Junior and Senior.  
**Most memorable moment at Northeastern:** "When the team finished in first place at the Buffalo University Tournament."  
**Advice you would give other student athletes:** "Work hard on and off the court, and always give one-hundred percent at everything you do."

Eagles earn respect

Upset ASU 78-75 in Tempe

by Joseph D. Yovino

A small step in basketball could mean a giant leap in respect. That is exactly what the Golden Eagles Men's Basketball Team is accomplishing this year. The improved Eagles have won four out of their last six contests and have also won four of their last five games at home. NEIU is off to their best start ever since moving to the Division I level. The team improved on a tough December schedule to seven wins and six losses on the season.

Tough may not be the word. In the past month, the Eagles have faced cross-town rival UIC and DePaul, the nineteenth ranked Minnesota Golden Gophers, last year's Southwest Athletic Conference Champions Jackson State, and the Arizona State Sun Devils. While the schedule has been tough, the Eagles have been tougher. NEIU won their biggest game ever by defeating Arizona State 78-75 in Tempe, Arizona. Freshman Marcus West continues to be a bright spot for Coach Rees Johnson. West had twenty-four points in the upset over A.S.U. Ulysses Moran had a game high eleven rebounds for the victorious Eagles.

But the Eagles were not finished. NEIU returned home to defeat the Jackson State Tigers 81-76. What makes the win even more impressive is the fact that JSU finished last season with an overall record of 25-9, a SWAC Conference record of 13-1,

and the team advanced to the second round of the NIT Tournament. The Tigers only lost one player from last year's Tournament team. NEIU's Reggie Smith led all scorers with twenty-nine points.

The Eagles then defeated Central Michigan University by twenty points giving NEIU their largest margin of victory ever over a Division I team. Reggie Smith led NEIU with thirty-two points en route to a 78-58 victory.

On December 7th, the Eagles returned home to face the University of Wisconsin-Milwaukee. NEIU defeated the Panthers 81-66 earlier in the season snapping their twenty-five game home winning streak. NEIU completed the season sweep by downing the Panthers 87-80. Marcus West was the leading scorer while Shannon Greene pulled down fourteen rebounds for the Eagles. NEIU out-rebounded UWM by twenty.

Senior Guard Reggie Smith leads the East Coast Conference in scoring with just over twenty points per game. Smith was also named the ECC player of the week, (Nov. 28- Dec. 5) as he scored thirty-six points against the Oklahoma Sooners.

Catch the Eagles in action on 1330 AM (WKTA) or come watch them as they earn your respect by defeating some very good teams.

Shaded boxes denote home games										
Sports Calender										
January Dates	Tue. 11	Wed. 12	Thurs. 13	Fri. 14	Mon. 17	Tue. 18	Fri. 21	Sat. 22	Sun. 23	Mon. 24
Men's basketball			Chicago State 7:30 p.m.		Central Conn. State 7:30p.m.			Buffalo U. 7:00p.m.		Troy State 7:30 p.m.
Women's basketball	Trinity College 7:00p.m.	Chicago State 5:00p.m.						Troy State 5:00p.m.		
Men's/Women's swim- ming/diving				Wisconsin 4:00 p.m.			Bradley U. 6:00p.m.	Bradley U. 10:00a.m.		



## "chat" continued from front page

different tasks. Some would be working in public relations, some on events, a lot of them in a voters registration project we have right now. Others will work in the field going door to door. There are plenty of positions. This is an enormous district, five-hundred and eighty thousand. More than one-hundred thousand people will vote in this election, so reaching as many people as possible through direct mail, press conferences, radio ads and door to door work is central to the campaign. It's not so much getting people not to vote for Rostenkowski; I have to give them a reason to vote for me.

**In the last election you lost to incumbent Dan Rostenkowski. Do you think that his involvement in the Post Office scandal will assist you in victory this time?**

Yes, last time I got forty-three percent of the vote. Our biggest problem was being able to contact enough of the voters in one election. Our polls this time show that if the election were held today with just Rostenkowski and I on the ballot, I would win with about sixty percent of the vote. However, the campaign may become more complicated, and there may be other candidates running, so we won't know for sure until January exactly who is running in the race. The basic pattern is I'll be running against Rostenkowski, and there may be a few other candidates as well. They won't criticize Rostenkowski. They're not really out to replace Rostenkowski. They're hoping that he goes to jail quickly, and they get to take his seat as the machine anointed candidate. So they are playing sort of a "better" game. I'm directly out to represent the district and directly opposed to Rostenkowski, so that will be where the central action in the race will be.

**You are running on a lot of reform issues such as term limits and trying to weed out corruption. Doesn't this fly in the face of the machine?**

Yes, they prefer the status-quo. Corruption does not bother the machine. They are perfectly willing for there to be corruption as long as nobody gets caught. I believe in reform. I believe in much more direct contact with the voters. When I was at Northeastern, for instance, one of the proposals I had was town hall meetings throughout the congressional district. I promised the students and faculty at Northeastern that one of the early town hall meetings, if not the first, would be held at Northeastern for that section of the congressional district that surrounds the University.

**If you held this meeting school reform would certainly be an issue. As a congressman, would you be able to affect school funding reform?**

Yes, labor and education would be committees that I would try to serve on. On higher education, one of the first issues is to replace the money that has been lost from Pell and other federal government grants. Over the last decade we have cut money for students by fifty percent. That has meant fewer grants and less money for the students which get grants. That has had a very negative impact on public universities and many others. There are other funding mechanisms needed for universities. The only programs that have been substantially funded by the federal government in the last twelve years have been research for defense industry like "Star Wars." Switching that around and having programs that directly benefit students, and benefit higher education is an important priority. As for reforming the public school system below college, if the federal government paid only half of the cost of the mandates that it requires of the public school system in Chicago, it would

mean an additional Two-hundred million dollars. With that much money, we would not have had a public school crisis this year in Chicago. The federal government pays between eight and fifteen percent of the cost of programs like the school lunch program, the desegregation program and so forth which they require schools to have.

**Who do you see as responsible for the perennial school crisis in Chicago?**

The state is, as people know, largely to blame, but the federal government has been cutting back on its share and its role. There is no commitment on the part of the federal government to play a leadership role in education.

**How do you see funding being redirected? Do you see funding coming from Star Wars and other wasteful defense projects?**

The easiest single cut is to cut the defense budget ten percent a year for five years. It would create a pool of eight-hundred and eleven billion dollars. That money could be partly used to pay off the debt and bring down the interest that we have to pay on the debt. The other money could be redirected to the public school system; to funding for mass transit; to funding for local school councils; for funding for community team policing, which is the only program that would actually prevent crime in a neighborhood. These are all areas that need federal support. Essentially, it is a question of federal reinvestment in the urban area. As we rebuild the American economy there will be more and more tax money and the stress on the budgeting process will be much less.

**What major areas are you campaigning on besides the ones that we have talked about?**

Well, corruption and reform of congress are obviously central.

**How do you see an end to corruption and the reform of congress coming about? Do you see a separate police agency for congress?**

No, I see systematic change by term limits, eliminating PAC (Political Action Committees) contributions, which are the primary corrupting influence on congress and require town hall meetings in congressional districts. The second issue that is very important in this district is that we have lost twenty-five thousand manufacturing jobs in the district in the last decade. We have to encourage the development of all kinds of new industry. In this district most of the companies have a couple of dozen to a couple of hundred employees. There are a few that have a thousand employees but primarily they are the smaller businesses that are just getting underway or may have a long history but need to expand at this point. As this happens we get jobs back. The commercial areas will build up and the rest of the economy in the district will begin to flourish.

**I was reading an article about how many small businesses are operating out of peoples houses in areas that are not zoned for them.**

Right, one of the problems is the zoning problem but primarily for the larger businesses that have maybe a hundred employees, even up to a couple of million dollar a year corporation. That is still, in comparison to say General Motors, a small business. Those are the ones that need a lot of immediate assistance. They need access to capital through commercial loans from banks. They need better help from the small business administration. They need very special infrastructure problems solved. One of the most obvious is viaducts. Some of the viaducts are falling down, some are in disrepair some aren't big enough for trucks to get under. There is a need to reclaim a number of industrial sites that have pollution on them, where the former company no longer exists. There's some pending legislation in

congress to allow the federal government to clean up those sites and to make them immediately available for those companies that are going from the cottage industry size to the hundred employee size. They can no longer do that out of their homes. They need to be able to springboard to the next step. The federal government could have the most impact quickest is by helping springboard the smallest companies into middle level companies. That kind of growth is possible, and there are several things that the federal government can do. They've never had a congressman in this district who has fought for the local companies. When Stewart Warner went out of business and two thousand jobs were lost, the employees were ready to buy the company, keep the jobs and reach the modern technological standards that the company had not maintained. They went to congressman Rostenkowski, and congressman Rostenkowski refused to help them with the company buyout. With Rostenkowski we don't have a congressman who cares.

**Do you see the federal government playing a part in aiding defense contractors in the peace conversion?**

We've had a lot of experience in America with de-militarizing after World War II and after the Korean and Vietnam Wars. The problem this time is there was no careful planning for peace conversion, and there was not a booming economy on the other side. I think, just as with NAFTA, there was not enough job creation. The first step has to be job creation. Training for a job doesn't do any good unless you have a job there. We also need a much better program converting the kind of products these defense contractors have produced in the past to commercial products they can produce and sell world wide. There will need to be some expense borne by the federal government in both jobs training and the peace conversion process. This has not gone smoothly so far.

The reason that there has not been more negative impact is that the cut has been so small. As the cut gets larger and takes affect, by the second and third year there will have to be a much more complete plan. It will cost some money. We will not recapture every dollar from defense spending. Part of it has to be to make the conversion process go well. The advantage of that is we not only produce well made products, we in fact build new markets and wealth and again create tax revenue automatically without any new taxation policy.

## "Sick" continued from front page

The work was planned to take place in three phases and to be completed by November 1993. However, as of this writing, the reroofing portion of the project is "not quite finished," and the contractor must return in the Spring to remedy tuck pointing deficiencies.

Phase 1 consisted of removing the existing roof materials and installing a temporary roof of roofing paper and asphalt directly on the concrete roof deck, which was completed in May 1993.

The tuck pointing in Phase 2 immediately followed and entailed cutting out the mortar in all of the brick joints, replacing it with fresh mortar, and removing and installing new sealant in other joints.

In early fall, Phase 3 began providing new insulation and a permanent single ply bitumen [substance occurring naturally or obtained by distillation from coal or petroleum, found in asphalt and tar, and used for surfacing roads and for waterproofing] roof installed over the temporary roof.

According to the memo, construction noise was anticipated on the



Matthew Berg / Independent

## Orchestra lives on

by Sasha Gerritson

On Thursday, December 9, 1993, the NEIU Orchestra gave their final concert for the semester. Director Philip Simmons gave some of his impressions of the performance.

"We opened with 'Pavane' (Opus 50) by Gabriel Faure, a very warm and intimate piece. The musicians sensed each other well and the solo passages were played beautifully by flutist Laura Kostur," said Simmons.

Next on the program was the famous "Trumpet Concerto" by Josef Haydn which featured faculty member Dr. Jonathan Martin as trumpet soloist. Martin, director of the NEIU Jazz Band, Concert Band and Brass Ensembles, has played with major bands and orchestras all over the country including the United States Air Force Band.

Simmons commented, "It was a pleasure working with Dr. Martin. His musical talent and leadership abilities added a great deal to the orchestra as well as to the growth of the entire Music Department. I was very pleased with the performance."

The program closed with Tchaikovsky's Fifth Symphony in E minor, a challenging piece for any orchestra because of the technical demands and depth of emotion required to deliver an effective performance. Usually a work such as this is done with a much larger orchestra, but Simmons has done wonders with the group of enthusiastic and talented musicians he has.

The NEIU Orchestra is comprised of NEIU students, community players and students from other schools, including DePaul and Northwestern Universities, who are looking to further their musical experience. Almost all of these people come to Northeastern every Thursday night

for rehearsals.

When asked how he was able to gather such a talented group of musicians, Phil Simmons replied, "I've met these people through my work in other places and with other orchestras and I found that they share my love for good music."

Despite his youthful appearance, Simmons has contributed a great deal to the music world. After studying with teachers such as Gustav Meier and Elizabeth Green, and assisting Michael Morgan for three years with the Chicago Civic Orchestra and the Chicago Youth Symphony, Simmons learned valuable conducting techniques which led him to establish the Lincolnwood Chamber Orchestra. He is the assistant conductor of the Classical Symphony and has conducted the Russian-American Orchestra. Having received a Masters Degree in Composition from DePaul University, Simmons has also studied at Tanglewood and Fontainebleau and has competed in international competitions. This is his second year at Northeastern.

"I'm very proud with how hard all the orchestra members worked. They've come so far as a group in such a short time. It's been a great experience for me."

Watch for Simmons and the NEIU Orchestra in upcoming events such as the Spring Opera Production of Monteverdi's "Orpheus" on March 4 and 5 and the Orchestra concert on April 28, which will feature the winners of the University Concerto Competition in music of Mozart, Rachmaninoff, and the famous Symphony No. 5 of Ludwig van Beethoven.

Anyone interested in additional information about the Orchestra should call extension 3355.

**January 10 - 12 p.m., Daley Center.** The Opera Workshop, directed by Dr. Ron Combs and accompanied by Jane Kenas, will sing scenes from the operas "The Crucible" and "Louise". Admission free.

**January 14 - 7:30 p.m., Auditorium.** James R. Goodrich, baritone will present his Masters Degree Recital assisted by Jane Kenas, piano. Featured will be the song cycles "Before and After Summer" by Gerald Finzi and "Hermit Songs" by Samuel Barber. Admission free.

third floor during Phases 1 and 3, and in the areas adjacent to the exterior walls during Phase 2. However, all noise was predicted to "hamper normal activities in a given area for one day," and temporary relocations, phone mail and vacation leave for occupants of the affected areas were offered as alternatives.

The memo stated that the intake of dust and vapors would be minimized throughout the project, but that there would be noticeable odors from roofing materials and sealants. It further stated, "Materials used on this project are classified by OSHA as non-hazardous. However, those with certain allergies or in a pregnant condition may experience headaches when confronted with heavy concentrations of these vapors."

The Health Service Office received copies of Material Safety Data

Sheets listing data and precautions for the materials used during the tuck pointing and reroofing. The documents identified Petroleum Asphalt as a nasal irritant, especially of mucous membranes, and cautioned that when heated, "asphalt may give off small amounts of hydrogen sulfide, a flammable toxic gas. Breathing of hydrogen sulfide, and of vapor, fumes or mists must be avoided. Use ventilation, and where possible work upwind of the source of the fumes."

Kish stated that when the work was started "we were aware there was a slight possibility" that students with allergies and certain medical conditions might be more sensitive to the chemicals. The Construction Notice memo advised occupants of the Science building to consult with their physician regarding their individual health conditions.