

10-24-1994

Independent- Oct. 24, 1994

Joseph D. Yovino

Follow this and additional works at: <https://neiudc.neiu.edu/independent>

Recommended Citation

Yovino, Joseph D., "Independent- Oct. 24, 1994" (1994). *The Independent (1988-present)*. 127.
<https://neiudc.neiu.edu/independent/127>

This Newspaper is brought to you for free and open access by the NEIU Student Newspapers at NEIU Digital Commons. It has been accepted for inclusion in The Independent (1988-present) by an authorized administrator of NEIU Digital Commons. For more information, please contact neiudc@neiu.edu.

June Sochen Named BGU Distinguished Professor for 1994-95

article by a September 1994 publication of NEIU's fyi newsletter



Martin Felix / Independent

Dr. June Sochen, professor of History and Women's Studies at NEIU, has been named the Board of Governors Universities (BGU) Distinguished Professor for 1994-95. Excellence in teaching was the major criterion, along with research and community service, for selection of contend-

ers from each of the five BGU universities.

Sochen will receive a stipend of \$2,500 and have her salary base increased by the same amount. Additionally, she'll receive 50 percent released time during this academic year to make presentations on selected topics at the five BGU universities and public appearances on behalf of BGU.

see **Sochen** page 12

Student-Senate Referendum Questions Tallied

The votes have been tallied and the results are in. During the recent NEIU Student-Senate elections three referendum questions were asked of students. Results of the poll were collected from El Centro, CICS, the main campus and absentee ballots.

The first question pertained to an athletic fee increase. The referendum question specifically asked, "Do you support an Athletic Fee increase?" Out of a total response of 681 votes, 614 students, or ninety percent, voted against an athletic fee increase. Sixty-seven students favored a fee increase. 488 students voted on this issue from the main campus of which 437 (eighty-nine percent) declined a fee hike while only sixty-seven main campus students supported an athletic fee increase.

The second referendum question dealt with a proposed new

wooded gym floor. The exact question read, "Do you support the replacement of the gym floor in the Physical Education Building. Out of the 669 students who replied to this question 472 or seventy-one percent voted against a new gym floor. 197 students or twenty-nine percent were in favor of a replacement floor.

In March of 1992, two years after NEIU moved to the Division I level in athletics, the Faculty-Senate was asked to vote on a referendum on whether or not NEIU should continue to participate in the ranks of Division I Intercollegiate Athletics. Of the 185 faculty members that voted on this referendum, 163, or eighty-eight percent of the members voted against remaining at the Division I level while seventeen faculty members, or nine percent favored remaining at the current level of athletics.

University Working to Make Classrooms Handicapped Accessible

by Shelly Falevits

Nancy Schilf, an NEIU sophomore, encounters difficulty each day in her classrooms. She has a hard time making it through doors, past chairs, and finding a seat in her classrooms. Nancy Schilf is handicapped and in a wheel chair.

In early September, Schilf contacted Margo Smith at the Affirmative Action Office to inform her about the problems with the tables placed against the walls and how difficult it was for her to make it to them.

Students were always willing to help me with my books and positioning once they saw me struggling, but what I really needed was to make sure the tables stayed by the front of the room next to the doors," Schilf said. "This way I could come in and easily get to my place."

After Smith was informed, the tables were moved to accommodate the handicapped students' needs. But by the following Monday, the tables were back to the same places, against the walls.

Bonnie Hartman, NEIU's Su-

pervisor of Administrative Services-Facilities Management explained why the tables are so hard to keep in place. "We hold classes in our classrooms from 8 am to 10 pm everyday. During the course of the day they just get rearranged," Hartman said.

When Schilf heard from two other disabled students that their lecture halls had no tables in them she took it upon herself to compose a petition in mid-September. She received over two-hundred signatures in two days supporting the tables remaining in their place. Schilf's petition stated, "We, the undersigned, as the members of the university community support the plight of disabled students to be provided accessible tables and chairs near the door of every classroom. We strongly urge the administration to enforce and monitor that the furniture is left in its designated place at all times."

At this point a memo was circulated to all the faculty by Smith reinforcing that the tables should remain in their place at all times. If there was a problem, the faculty was to contact the janitorial de-

partment to move the tables back.

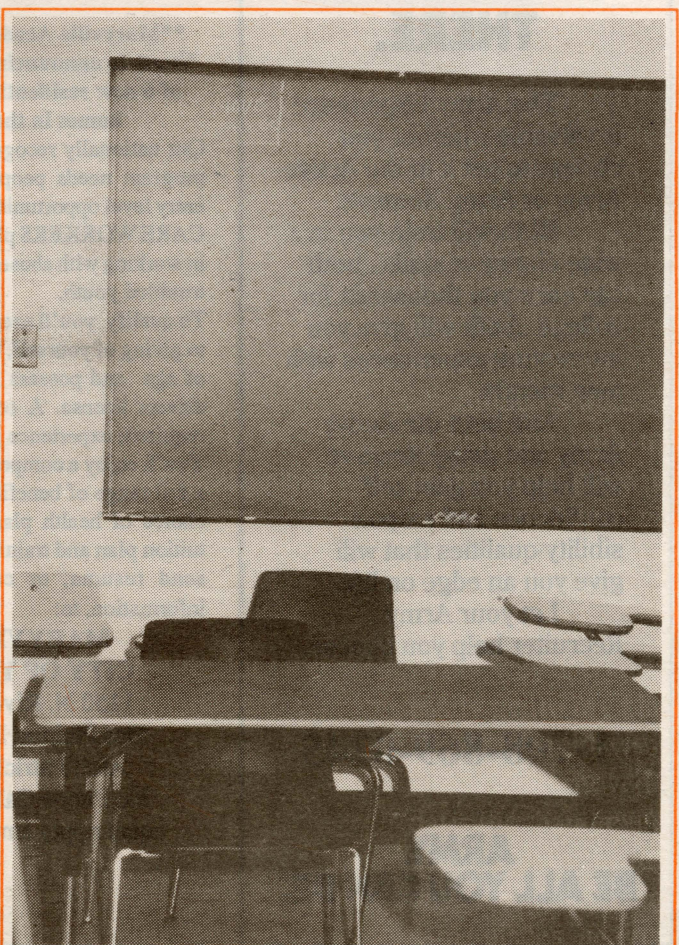
Schilf then stopped her petition, but still held onto it in case the occurrence was to arise again.

"I won't be sitting around on this issue anymore. I'll be watching them and keeping my eyes open."

Hartman believes the university is very supportive of students' disabilities as to finding accommodating solutions. "As of June 1993, we ordered 113 (24 by 48) tables and 248 chairs and put two tables in each general classroom. We try to respond to handicapped students and their needs well beyond limits. This order was

made for a possible solution."

see **Accessible** page 14



Martin Felix / Independent

CLASSIFIEDS

HELP WANTED

Help Wanted - Individual students/organizations to promote Spring Break Trips. Earn high dollar commissions and free trips. Must be outgoing and creative. Call Immediately 1-800-217-2021.

*****SPRINGBREAK '95*****
America's #1 Spring Break Company! Cancun, Bahamas, Daytona & Panama! 110% Lowest Price Guarantee! Organize 15 friends and TRAVEL FREE! Earn highest commissions! (800) 32-TRAVEL.

WANTED!!! - Individuals, Student Organizations and Small Groups to Promote SPRING BREAK '95. Earn substantial MONEY and FREE TRIPS. CALL THE NATION'S LEADER, INTER-CAMPUS PROGRAMS 1-800-327-6013.

OPPORTUNITIES

FUNDRAISING - Choose from 3 different fundraisers lasting either 3 or 7 days. No Investment. Earn \$\$\$ for your group plus personal cash bonuses for yourself. Call 1-800-932-0528, Ext. 65.

FOR SALE

MACINTOSH COMPUTER - Complete system including printer only \$500. Call Chris at 800-289-5685.

MISCELLANEOUS

LOVING COUPLE wishes to give your baby a lifetime of love, happiness & dreams come true. Call us anytime 1-800-708-8648 Deb & Jim.

SERVICES

In a jam? Need a professional typist? Resumes, papers, reports. Word Processing. Fax communication. Convenient, affordable and accessible. Call 312-275-1939.

STUDENT ACTIVITIES

HOTLINE

312-794-2992

ON-CAMPUS:DIAL x2992

STUDENT ACTIVITIES

HOTLINE

312-794-2992

ON-CAMPUS:DIAL x2992

THERE'S AN ARMY OF CHOICES OUT THERE.

The Army Experience is valuable-whether you choose to get it in the Active Army or Army Reserve.

Both will train you in a wide choice of skills...both can earn you thousands for college...both will give you interesting experiences with new friends.

And both the Active Army and Army Reserve will help you gain self-confidence and responsibility-qualities that will give you an edge on life.

Let your Army Recruiter help you choose.

1-708-869-0245

**ARMY.
BE ALL YOU CAN BE.®**

SOCIAL SERVICES

"No Man Stands So Tall As He Who Stoops to Help a Child"

****Maryville Academy - City of Youth** is announcing the opening of 6 new residential/diagnostic homes in the fall**

Our nationally recognized child care program needs people like you for entry level opportunities. Our CHILD CARE WORKERS play a critical role in working with abused, neglected and troubled youth.

To qualify, you'll need a commitment to giving of yourself, be over 21 years of age and possess a valid Illinois' drivers license. A college degree is required; experience is preferred. You'll enjoy a competitive salary and a full range of benefits that include a choice of health plans, dental plan, tuition plan and training. If interested send resume, or call for further information, to:

**MARYVILLE
CITY OF YOUTH**
1150 N. River Road
Des Plaines, IL 60016
Attn: Patrick Kelly
No Phone Calls Please
equal oppty employer m/f

The Halloween Corner

• **All Hallows' Eve History Tour.** Hayrack rides, pumpkin carving and storytelling, along with tours which begin every hour. Oct. 30, 6-9 pm. \$3-\$4. Rosehill Cemetery, 5800 N. Ravenswood. (312) 561-5940.

• **Boo! At The Zoo.** A Halloween celebration runs Oct. 29-30, 11 am to 3 pm. Activities include trick-and-treat stations throughout the park, a costume parade at 1 pm and a costume contest. Adults, \$4; children, 3-11 and seniors, \$1.50; children under 3 are free. Brookfield Zoo, 1st and 31st, Brookfield. (708) 485-0263 or (312) 242-2630.

• **Ghost Stories For Children.** For ages 5-12, Fri.-Sat., 8-9 pm. For ages 2-4, Sun, 2-3 pm, Free. Don's Garden Center, 2800 W. Montrose. (312) 267-7008.

• **Hades Haunted House.** Billed as "the nation's largest haunted house". \$10 allows entry into the Haunted House and Club Hades Video Dance Party. Oct. 24-31, 7-10 pm. The Odeum, 1033 N. Villa Ave. Villa Park. (312) 227-4186.

• **Hallow Boo Party.** Spooky party for children ages 4-11, includes music, games, arts and crafts, costume parade and a Halloween treat. Oct. 28, 10:30 am-noon. \$6.50. Lakeshore Athletic Club, 1320 W. Fullerton. (312) 477-9888, ext. 172.

• **Halloween Haunted Forest.** Oct. 27-30, 6:30-9 pm. \$4. Caldwell Woods, Milwaukee and Devon. (708) 771-1014.

• **Halloween Hoe-down For Kids.** Geared to children 12 years and younger, festivities include costume contests and carnival games. Oct. 30, 4:30-8 pm. Bub City, 901 W. Weed. (312) 266-1200.

• **Halls Of Horror Haunted House.** Mon.-Sun., Oct. 24-30. Mon.-Thur., 7-10 pm; Fri.-Sat., 7-11 pm. \$4. St. Pascal School, 6143 W. Irving Park Rd. (312) 736-8806.

see **Halloween** page 15

Student Clubs and Organizations

• **A.A.-** meets Wednesdays and Thursdays at 1:40 pm in CLS 3003. Meeting needs support.

• **APOCALYPSE LITERARY ARTS COALITION** - meets Tuesdays at 1:40 pm in E-041 or stop in anytime.

• **ART CLUB** - meets Thursdays, 1:40 p.m., B 119. Ext. 3103.

• **ASPIRA** - meets Thursdays, 1:40 p.m., S 112. Ext. 3153.

• **BLACK CAUCUS CLUB** - meets Thursdays, 1:40 p.m., CLS 3031. Ext. 6146.

• **BLACK HERITAGE CLUB** - meets on Tuesdays, 1:40 p.m., CLS 3031. Ext. 3142.

• **CHIMEXLA** - meets Tuesdays, 1:40 p.m., E 051. Ext. 3220.

• **CRIMINAL JUSTICE STUDENTS ORGANIZATION** - meets 11/12, and 12/7, 1:40 p.m., CLS 3003. Additional dates to be announced. Ext. 2622.

• **GAY, LESBIAN AND BISEXUAL ALLIANCE** - meeting on Sept. 29. at 1:40 pm. CLS 2094. Oct. 11-National Coming-out Day. Think Pink! Be Proud! Oct. 27-meeting at 1:40 pm in CLS 2094. Nov. 17-meeting at 1:40 pm in CLS 2094. For more info., contact x-2960.

• **EARTH SCIENCE CLUB** - meets on alternate Tuesdays, 1:35 p.m. and Wednesday at 3:00 p.m., call Marianne ext. 2536 for more information.

• **HELLENIC CLUB** - meets every Tuesday at 1:40 p.m., S-111.

• **INDO-PAK STUDENT ASSOC.** - Meets every Wednesday at 2:00. For info. contact Ext. 5011.

• **INFINITY** - meets first and third Tuesday of every month. Ext. 3119.

• **MANAGEMENT CLUB** - For more

information regarding membership, contact M. O'Malley at ext. 2648.

• **MUSLIM STUDENTS ASSOC.** - meets every 2nd & 4th Thursday of the month. E-051, (312)851-8860.

• **NSAB** - Northeastern Student Activities Board meets first and third Thursdays, E 205, ext. 3865. Ext. 3865.

• **QUE ONDEE SOLA** - meets Thursdays 1:40 p.m., E 041. Ext. 2954.

• **S.C.E.C.** - Student Council for Exceptional Children meets on alternate Thursdays at 1:45 p.m. in CLS 3020. Ext. 3040.

• **THE SCI-FI CLUB** - meets on alternate Tuesdays, 1:40 p.m., CLS 2005.

• **THE SOCIOLOGY CLUB** - meets every first and third Tuesday, 1:40 p.m., CLS 2094.

• **SPANISH CLUB** - meets Tuesdays, 1:40 p.m., in CLS 2094.

• **STUDENT ENVIRONMENTAL ACTION COALITION** - meets every third Thursday of the month, 1:40 p.m., S 202.

• **STUDENT SENATE** - stop by E-210, above Beck's Bookstore, anytime.

• **U.P.R.S.** - Union of Puerto Rican Students meets Tuesdays, 1:40 p.m., E 041. Ext. 2718.

• **WSU** - Women Students United meets Thursdays, 1:40 p.m., A108, ext. 3302.

• **WILDRENESS CLUB** - meets first and third Thursdays, 1:40 p.m., S-111.

• **WZRD 88.3 F.M.** - stop by E-059.

Extension 200

Extension 200 is available 24 hours a day. Members of the University Community are urged to contact Public Safety when they need help, or if they have information about these items.

Public Safety concerns compiled by Public Safety Officer Bob Paprocki

Oct. 3 - Theft: Level 2 parking permit #5840 and other property were taken from an unlocked auto in the D-Lot. A loss of \$51.00. **Burglary:** A student reported personal property taken from a locker in the P.E. Building. A loss of \$20.00. **Theft:** An instructor reported several textbooks missing from his office in the Classroom Building. A loss of \$326.00. **Disorderly conduct:** Staff members of a department in the A-Wing reported annoying phone calls throughout the day.

Oct. 4 - Other public service: A six year old child entered a staff member's office claiming he was lost. A University Police Officer, acting as a translator transported the child home.

Oct. 5 - Station information: A student reported her auto being tampered-with and a license plate being stolen while off campus. **Criminal damage:** Graffiti was discovered in the second floor of the Library. A loss of \$100.00 to clean. **Theft:** A cellular phone and attachment were stolen from an unlocked auto parked in the A-Lot. A loss of \$190.00. **Accident:** A motorist drove his auto into a light pole on the Access Road to avoid hitting a "furry little creature". The animal escaped injury and the vehicle was towed-away with unknown damages. **Medical assist:** A visiting student became ill in the P.E. Building and was released to the custody of her parents.



Miss National College Photo Model

Entries are being sought for young college women to participate in the 1995 Miss National College Photo Model Contest. The winner and runners-up in this year's contest will appear as photo models in a national magazine. The contest is open to young women between the ages of 18-26 who are single (never married) and are currently enrolled full or part-time in college. Winners will be announced in the month of May. For application and information send a self-addressed stamped envelope to: Susan Peterson, National College Director, 5400 W. Cheyenne #1098, Las Vegas, NV 89108.

Child Care Center Bake Sale

The Northeastern Illinois University Child Care Center will be having a Bake Sale on Wednesday, October 26th from 9:00 a.m. to 12:00 p.m. in the Village Square. The funds generated from this bake sale will go towards the playground.

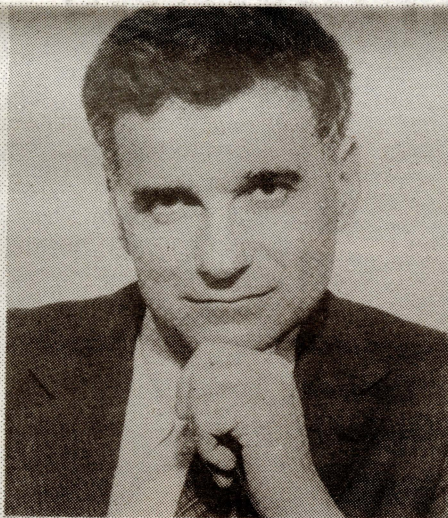
Oct. 6 - Theft: A student reported her auto's grille missing while parked on campus. A loss of \$400.00.

Oct. 10 - Traffic accident: A motorist's vehicle was struck by another vehicle in the F-Lot. Two state tickets were issued. Damages were estimated at \$500.00. **Burglary:** A staff member reported property missing from an office in the Classroom Building. A loss of \$241.00. **Traffic arrest:** A driver was arrested near the Access Road for driving without a license and possible drug equipment.

Oct. 11 - Theft: A former student was arrested in the P.E. Building after taking another student's jacket and other property.

Oct. 12 - Theft: A student reported leaving personal property in the Science Building, when the student returned the property was gone. A loss of \$40.00.

Oct. 13 - Other Police: A NEIU Police Sergeant and a patrolman apprehended an aggravated battery offender off campus who was being sought by the Chicago Police Department.



A Special Message to the Faculty and Staff of Northeastern Illinois University

"For years I have fought to protect our environment, to lower health costs, to expand affordable housing, and protect consumers. Now you can join with me in fighting for these goals by supporting the Public Interest Fund of Illinois with a payroll deduction at work."

Ralph Nader
Consumer Activist

Public Interest Fund of Illinois (#906) - Member Organizations

American Friends Service Committee
Campaign For Better Health Care
Champaign County Health Care Consumers
Champaign-Urbana Tenant Union
Chicago Area Committee on Occupational Health and Safety (CACOSH)
Chicago Coalition for the Homeless
Coalition for Citizens With Disabilities
Coalition for New Priorities
Community Recycling Center
Council for Disability Rights
Crossroads Fund
Eighth Day Center for Justice
Illinois Association of Non-Profit Organizations (IANO)
Illinois Hunger Coalition

Illinois IMPACT
Illinois Peace Action
Illinois State Council of Senior Citizens
League of Women Voters of Illinois
Mexican American Legal Defense and Educational Fund (MALDEF)
NAACP, Illinois State Conference

National Consumers Foundation
Physicians for Social Responsibility
Prairie AIDS Foundation
Southern Counties Action Movement
Statewide Housing Action Coalition
WEFT - Community Radio
Women United For a Better Chicago



PUBLIC INTEREST FUND OF ILLINOIS

"A World of Change in Your Own Backyard"

ANNOUNCING THE DISCOVER® CARD \$25 NEW MEMBER REBATE.



(Hurry, it won't be here for long.)

Apply for the Discover® Card
by November 10.


Spend \$75. Get \$25 back*.

NO Annual Fee.

Look for applications and certificates on campus.



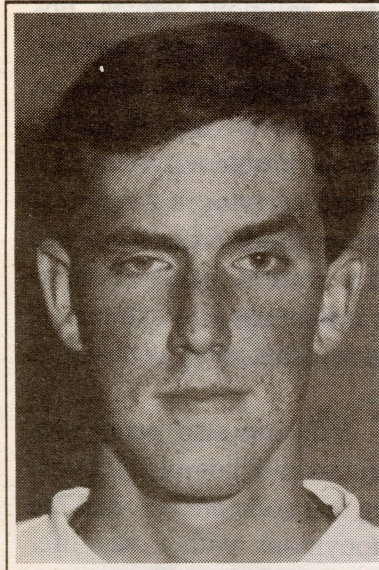
IF YOU DON'T GOT IT,
GET IT.™

MEMBER  NETWORK ©1994 Greenwood Trust Company, Member FDIC.

*This offer valid for Discover Card applications received by 11/10/94, that are approved and enrolled between 9/21 and 11/21/94. Offer valid for purchases made by 3/31/96. Cash advances/balance transfers excluded. Offer limited to one rebate per account.

Voice of the Campus

The opinions expressed on this page are those of members of the university community, and do not necessarily coincide with those of the editorial board of the **Independent**.



The Eagle's Talon

by Chris Jacobi

"Trick or treat, smell my feet, give me something good to eat." Aahh... does that bring back memories of Halloween's past. I can still remember getting dressed-up like the Karate Kid and going door-to-door begging for candy. Those were the good 'ol days. It used to be a kid could go out and trick or treat late into the night. Now kids have to worry about being mugged, kidnapped or even killed. The only question I have is why? How can society

let an innocent holiday turn into a crime spree. Years ago one could look out their window and see the streets lined with kids. Now your lucky if you see six kids the whole day, depending on where you live. Again I ask the question, where did Halloween go wrong?

Just in case some of my readers don't know what Halloween means, never fear, I did a little research to help you out. Halloween was originally called All Hallow's Eve because it fell on October 31st, the eve before All Saints Day. The holiday goes back hundreds of years and basically is about superstitions like the black cat fear, witches and goblins. I hope I was able to shed some light for those of you in the dark about Halloween.

Remember when the night was over and you came home to look through your candy. And as you went through your stash carefully removing the candy that comes in those orange and black wrappers that

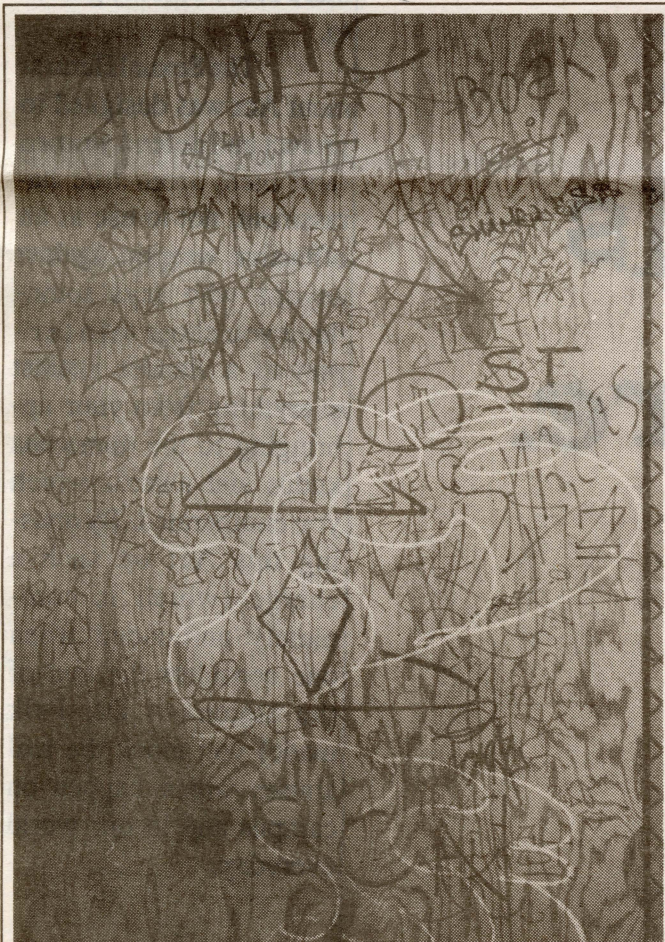
no one likes; then you eat and eat and eat. Well no longer can one just unwrap a Nestle's Crunch bar and chow down. Now kids, as well as parents, must be very careful before eating their candy. Remember if you will, a few years ago when needles were found in apples, and candy bars were being poisoned. What kind of sick mind can do this to children. No longer can a child just unwrap and eat the candy. Now they have to examine, unwrap, sniff, and almost risk their lives to enjoy their treasure of candy.

On a lighter note, I would like to gripe about the Halloween specials that appear every year. Now I grew-up on Charlie Brown's "The Great Pumpkin" and other classics. In recent years I have not seen a Halloween special that can compare to "Garfield's Halloween Special". It seems that along with everything else that has to do with Halloween, the once-a-year specials have gone down hill.

My last complaint, and I blame this one on the kids, is the costumes. It seems that originality has been left out of costumes in the past few years. When my brothers and I went trick or treating we always tried to think of original costumes. I can remember one year when my older brother taped socks and underwear to himself and went as static cling. Another year, a friend of mine stuck cereal to himself and went as a Cheerio. This is originality at its best. The rage now is the Mighty-Morphin Power Rangers costume. I am willing to bet that there will be no less than ten kids per street wearing this costume.

Well my friends, that is my take on the decline of Halloween. Some of you might call me cold or even cynical. But I prefer to look at it as being honest. I can remember having the time of my life trick or treating with my friends. But like everything else in society today, Halloween has become too commercialized.

Editorial



The Haunted Halls of NEIU

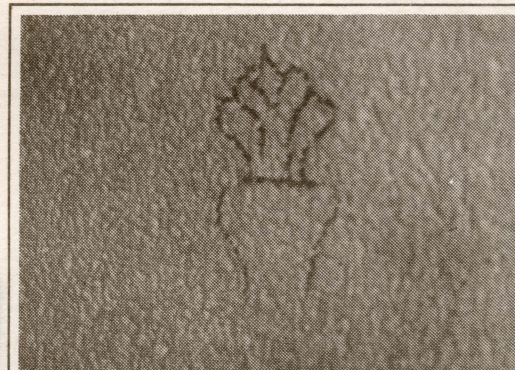
It is scarier, more frightening, and more unnerving than any Halloween freak show or haunted house and it inhabits a place where you spend much of your time. It is gang graffiti--and it is everywhere.

The media today bombards us with gang violence and killing. We, as a society, must deal with gangs and violence in our everyday lives. We are force-fed gang violence to such an extent it becomes a common theme of human existence. But when does it cease? Apparently not at the front doors of this university.

Walking through the halls of NEIU has become a haunting experience. Gangland symbols clutter the walls of much of this school. Pictures such as these are not uncommon to students, faculty, and the administration. The university community, Public Safety, and Facilities Management deal with these markings on a regular basis. They not only destroy the beauty of this campus but they also cost the students and

tax-payers money to have them removed.

It is a shame we are forced to deal with this type of graffiti. But it is even more shameful that we must deal with this type of reality. The reality that gangs and their members exist at NEIU. They walk through the halls, take classes, and graduate from the same institution you inhabit. Universities and colleges should be a safe haven away from such monstrosities. NEIU was founded on the belief that it would be a learning tool for those who wanted to better their future, not as a new set of white walls for gang members to claim as their turf.



THE Independent

Northeastern Illinois University Chicago, Illinois 60625

The student newspaper of Northeastern Illinois University is published every two weeks except during final examinations and semester breaks. Letters to the editor are encouraged, but must be signed by the author. "Anonymous by request" can be added by the editor. Letters should be typed, or clearly written, and limited to about 200 words. We reserve the right to edit or omit any letters received. Deadline is one week prior to the issue in which a contribution will appear.

Editorial Board

Editor in Chief: Joseph D. Yovino
Calendar Editor: Ellin Beltz
Features Editor: Kim Mathiot
Entertainment Editor: Mable L. Buckner
Business Manager: Betty Boduch
Faculty Advisor: Dr. T. Scherman

Staff Members

Sara Capetillo
Ellen Shepard
Darlene Saxon
Juan Fernandez Saines
Aimee Smith
Chris Jacobi
Shelly Falevits

Staff Photographers

Martin Felix
Steve Fitzer

Address

Room E-049
5500 N St. Louis Ave.

Office Hours

9 a.m. - 4:30 p.m. Monday-Friday

Telephone Numbers

Advertising (312) 794-2812
News (312) 794-3812
Fax (312) 794-6243
Editor's desk (312) 794-3811

Letters to the Editor

Editor:

As a female student here at NEIU, I felt, to use Dr. Kinkle's words, "outraged and offended" by her statements. Dr. Kinkle's presumption that any woman who is not a Christian, and not a virgin till marriage, is a whore is wholly offensive to me. I, too, could go back into my female history and find many incidents of male domination over female sexuality. I could also find women like Dr. Kinkle trying to force me to live my life according to her standards of womanhood. Since I do not live the life-style Dr. Kinkle preaches I am dismissed as a whore--nothing more.

Each person in our society must be free to choose their own

sexuality--whatever they find true for themselves. We can educate people to be sexually responsible and aware. But we cannot go back to the days when one religious or social group defines the morals and standards for everyone. I can't tell Dr. Kinkle not to be offended--that is her right. But I can suggest, in these rabid times, that we try to understand each other first. Have we gone so far we can no longer talk to each other as people? What about saying, "that remark bothers me, what did you mean?" There are many desperate problems facing women today--violence, economics, child care--we need to work together at real solutions, not waste energy on minor misunderstandings.

I love humor, I make jokes all the time. I probably would have made a similar remark to Dr. Kinkle, in the spirit of fun. Would she have been as outraged? Maybe not, after all, I'm a woman. But we'll never know, will we!

Tina Haglund Spitz

Editor:

Dr. Kinkle:

Perhaps your standing in the eyes of your colleagues has been irreparably damaged, not by the seemingly harmless joke of Dr. Falk, but because they now recognize that you can't tolerate good-humored joking. You chose to take Dr. Falk's remark as a personal affront. To take such a

vague and ambiguous statement and turn it into an attack on your chastity, religious values, upbringing and worth as a person, educator and Christian shows an immense chip on your shoulder. Perhaps the problem is yourself--if you are carrying a burden of such proportions around you are bound to read all kinds of outrageous inferences into statements that were meant to be taken at face value.

You are also being presumptuous and judgmental by asserting that someone's social life is synonymous with a sex life. Many women keep rigorous social calendars and late nights. By your standards, Dr. Kinkle, they must all be whores. I find it outrageous and offensive. And who are you to judge whether a woman is

a whore or not? Wasn't it Christ who said to the Pharisees who were about to stone an adulterous woman, "Let he who has not sinned cast the first stone"? If you truly practice what you preach as you say, perhaps this is a part of your Bible you should give more than a cursory glance to.

The Sexual Harassment Act was designed to protect and defend women (and men) from true harassment, not to use as an offensive weapon against anyone who says something you chose to interpret as a slander against everything from your upbringing to the numerous kudos and awards which you enumerated. By abusing this Act on such a charge (which is completely unfounded when one considers the text of the statement Dr. Falk made) you mock the real abuses which happen on campus and in our world everyday.

J. Barati

Accepted at more schools than you were.



It's everywhere
you want to be.

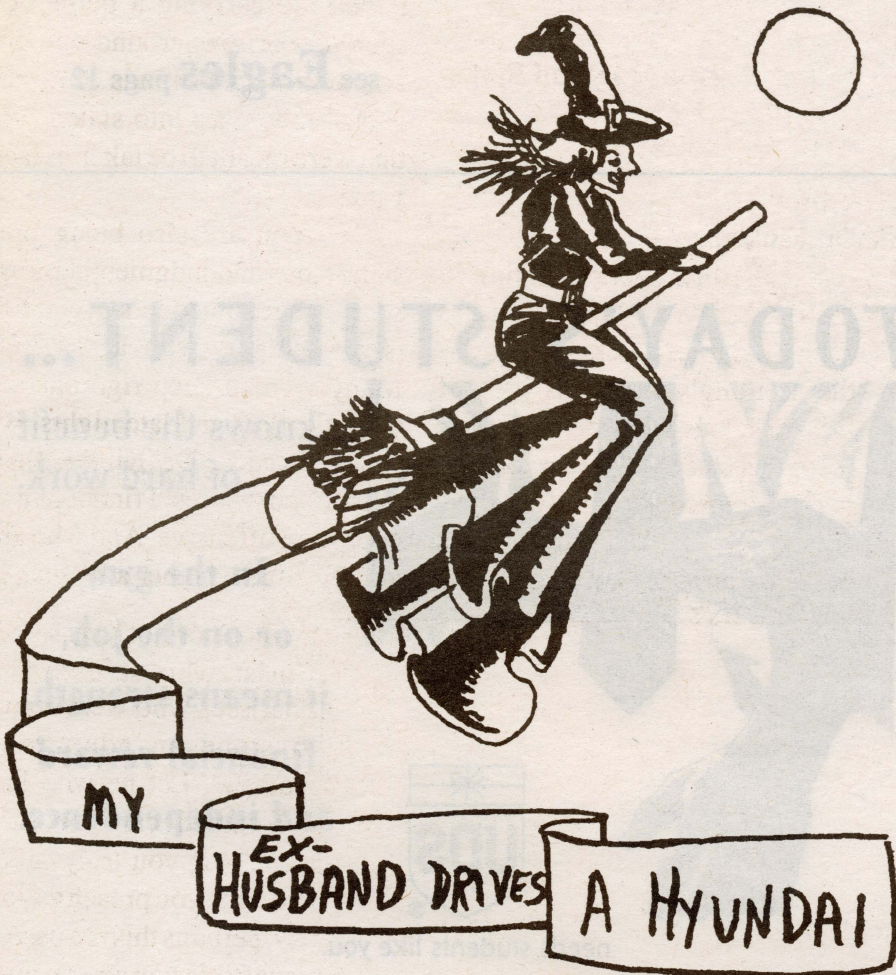
BE HEARD!

**Express
your opin-
ions about
campus is-
sues. Write
a letter to
the Editor.**

FEATURES

What A Witch!

by Juan Fernandez-Saines

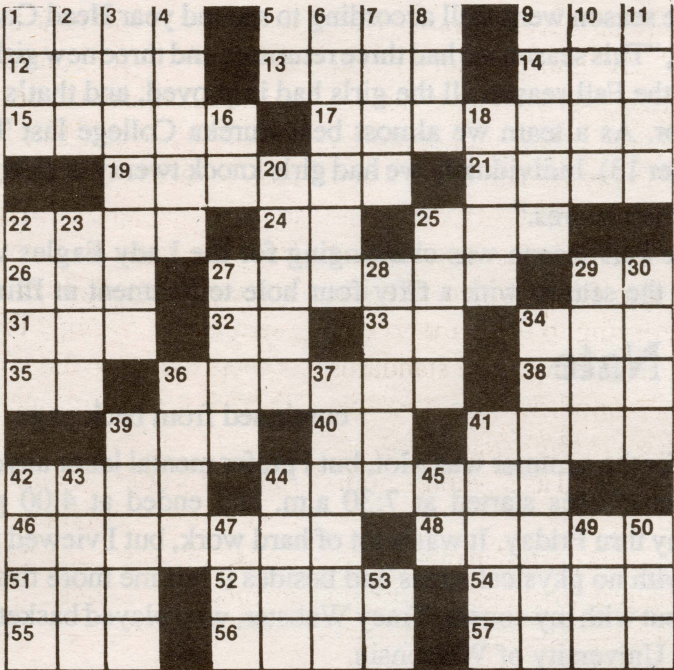


Wot??

by Raun Gallegos



Crossword Companion



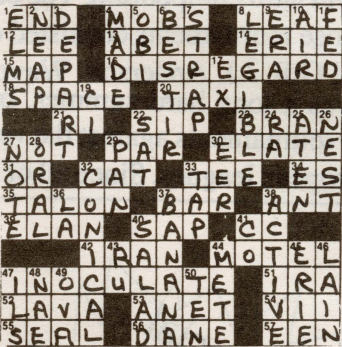
ACROSS

- 1. Sing alone
- 5. Dry
- 9. Beaver construction
- 12. Change into vapor (abbr.)
- 13. Dole out
- 14. Beer
- 15. Language
- 17. Washington building
- 19. Opaque coating
- 21. Want
- 22. Slice
- 24. Man's nickname
- 25. Limited (abbr.)
- 26. Doctor's group (abbr.)
- 27. Sound system
- 29. Near
- 31. Jelly
- 32. Tellurium symbol
- 33. Suffix added to make a verb an adjective
- 34. Verb (plural)
- 35. Suffix used to form verbs
- 36. Lords
- 38. By way of
- 39. Even
- 40. Rhenium symbol
- 41. Hollow instrument
- 42. Icon
- 44. Attorney
- 46. Nonmetallic element
- 48. Delete
- 51. Civil War general

- 52. Confining area
- 54. Zeus' shield (var.)
- 55. Curvy letter
- 56. Suggestion
- 57. Examination

DOWN

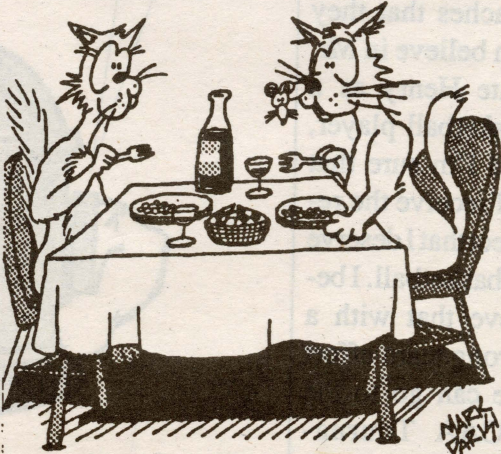
- 1. Select (abbr.)
- 2. Eggs
- 3. On the side
- 4. Think
- 5. Are
- 6. Ebb
- 7. Italic (abbr.)
- 8. Sheriff's assistant (abbr.)
- 9. Old
- 10. Medicinal plant
- 11. Displayed cards
- 16. Sodium symbol
- 18. Enter
- 20. Measurement
- 22. Congressional aide
- 23. Prayer ending
- 25. Allows
- 27. Heavenly body
- 28. Restore
- 29. Seed covering
- 30. Duck
- 34. Usual
- 36. Indonesian island
- 37. Fruit
- 39. Ski sticks
- 41. Hat
- 42. Small island
- 43. Expires
- 44. Cargo
- 45. You (Old English)
- 47. 201 (Roman)
- 49. Relative (for short)
- 50. Time zone (abbr.)
- 53. Each (abbr.)



Answers to last week's crossword

Off the Mark by Mark Parisi

OOOOOO! I HATE WHEN I LAUGH AND FOOD COMES OUT MY NOSE...



Psst... Feeling creative?
The Independent welcomes your contributions
Drop by E-049 any time or call 794-2812.

Lady Eagles End Season

by Aimee Smith

The NEIU Women's Golf team sadly said good-bye to their Fall season on October 13th.

The season went well according to second year Head Coach John Nation, "This season we had three returnees and three new girls. By the end of the Fall season all the girls had improved, and that's what we look for. As a team we almost beat Eureka College last Thursday (October 13). Individually we had girls knock twenty or thirty strokes off of their scores."

The Fall season was challenging for the Lady Eagles who started the season with a fifty-four hole tournament at Illinois

Nate

continued from back page

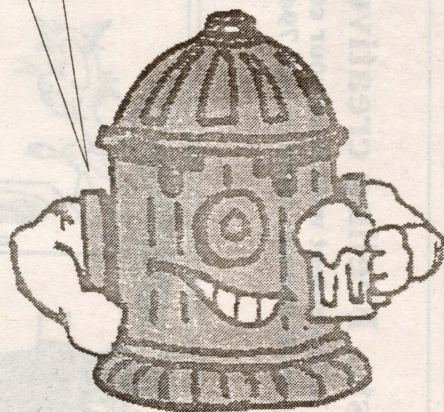
hours for the summer was a lot, but I prefer mental labor anyway. Summer classes started at 7:30 a.m. and ended at 4:00 p.m. Monday thru Friday. It was a lot of hard work, but I viewed it as a job with no physical stress and besides it left me more time to work-out with my cousin, Tracy Webster, who played basketball for the University of Wisconsin.

Everyday I worked hard to improve my game, because I wanted to utilize the strength, quickness and talent in basketball that God blessed me with. I also worked hard in my books, because I refused to go back to doing extreme physical labor in the job world. In the Fall of 1991 at Triton College, I played my first year of basketball and I started the first five games under Coach Frank Lollino. My freshman year in basketball was such a frustrating year, that I decided to red-shirt my sophomore year, because my intentions were to obtain my associate of arts degree and transfer to the University of Wisconsin to play three years of eligibility with my cousin. The only thing that changed my mind, was the fact that I had a son and I wanted to be there for him.

Therefore I started looking around for a College to attend in Chicago. N.E.I.U. was the perfect choice, because they had the academic program as well as the basketball program. In the Fall of 1993 I attended N.E.I.U. and played my sophomore eligibility in basketball. It turned out to be another frustrating year for me in basketball, but that didn't make me give up. I would always question the coach about my playing time and he would tell me to keep working hard, because, he said, hard work will pay off for you. After the season in March of 1994 I signed-up to play in three summer basketball tournament with hard competition. The competition that I played against in those tournaments consisted of a few NBA players such as Kendall Gill, J.J. Anderson, Wavman Tinsdale and Reggie Jordan. It was a long hard summer, but I averaged 22 points in the summer tournaments against the veterans of the NBA, CBA, and the European leagues. Since all of that

is over with I'm looking forward to my junior season in basketball and Coach Rees Johnson giving me the opportunity to play. With that opportunity, I will show my family, friends, fans, and coaches that they can believe in Mr. Nate Henry as a basketball player, and I'm sure that I'll receive the respect that I deserve in basketball. I believe that with a strong team effort we can go to the NCAA Tournament this year.

Everyday Special
60 oz. Pitchers
Bud or Bud Ice
\$2.50



State University. NEIU had a total of nine meets, through which they learned many things about themselves and the game of golf. First year golfer Cindy Davis, through determination and intense studying learned a special technique that helped her game immensely. Chris Yahn, playing through illness, recently broke a school record by shooting a ninety-seven at Eureka College. Becky Hull, another first

see **Eagles** page 12

TODAY'S STUDENT...



...knows the benefit
of hard work.

In the gym
or on the job,
it means strength,
financial reward
and independence.

needs students like you.

Part-time load/unload job opportunities
starting at \$8 per hour are available now.

Here's what UPS offers:

- 3-5 hours per day, M-F
- No Weekends
- Full health benefits
- Paid vacations/holidays

Approximate Start Times:

3:15 am 1:00 pm**
7:45 am** 5:00 pm
10:00 am** 10:00 pm**
* Addison & Chicago
** Chicago Only

Local Facilities

Addison Bedford Park
Northbrook Palatine
Franklin Park
Chicago (1400 S. Jefferson St.)

Applicant must be 18. For information on applying call...

1-800-727-5560

7 days a week 24 hours a day

UPS Is An Equal Opportunity Employer

Representative will be on campus October 24 & November 7

THE PUMPING COMPANY

"THE BEST DAMN BAR ON THE NORTH SIDE"

SPECIALS

Monday - Bucket of Rocks - 5 for \$8.00

Tuesday - Import Bottles or Pints - \$2.00

Wednesday - Quarter Beer Night
"A Tradition"

Thursday - Michelob Golden Bottles - \$0.75

Friday - \$1.50 Domestic Bottles

"Penny Pincher" \$5 Cover Penny Pitchers - Bud Light & Bud Ice

Saturday - Bucket of Bud or Bud Lite - 5 for \$6.00

Sunday - All the Above Specials plus \$1.00 Bloody Marys

6157 N. Broadway, Chicago, IL 60660 (312) 743-7994

All Major Credit Cards Accepted

Bring in this ad for a Bottle of Domestic Beer at Half Price

Collective Efforts Needed to Cultivate Computer Learnings

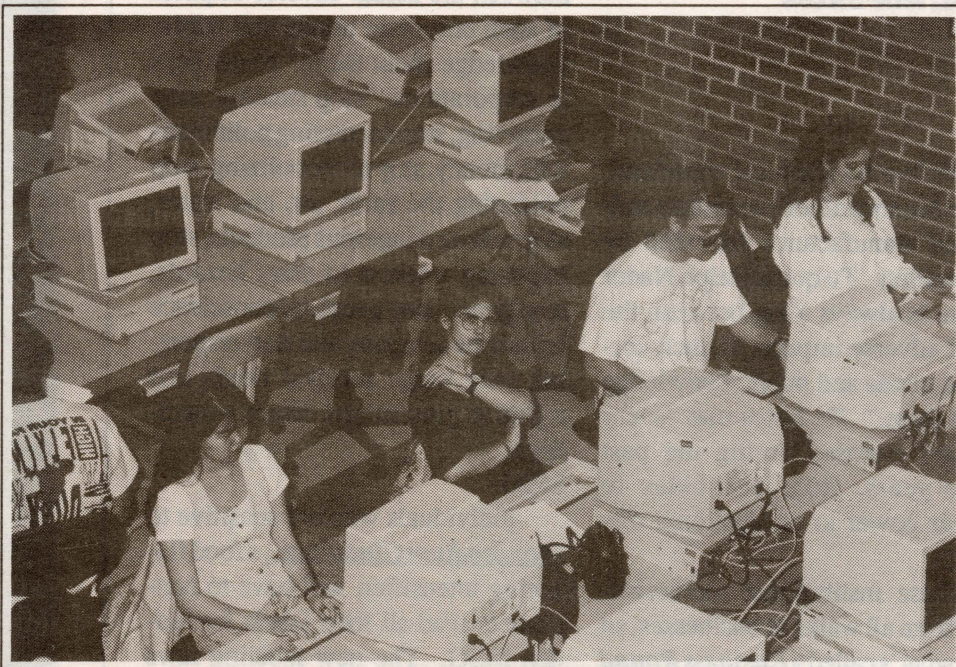
by Arshad Hameed

There is no doubt that University Computing Services has provided students with the best Computer Labs, especially their current addition of "Smart Lab" and Audio Visual labs which are second to none. But the entire system can be improved by collective efforts to list NEIU as one of the top ten schools in the state of Illinois offering Computer Science Degrees.

Students from all areas of study use these labs on a regular basis and they can play an important role in further improvement. Every user should leave the work station clean when they are finished using it. Help in recycling paper; do not throw garbage in paper recycling blue boxes. Much of the recycling paper wasted stems from students lack of carefulness. Students should be considerate to others. Loud conversation should be avoided inside the labs. Note that eating and drinking are not allowed in any of the labs. The Lab consultants should be attentive at work and not completely absorbed in doing their own class-work. Sometimes students have a difficult time finding some help in the labs, either because students do not see Lab workers' badges or they are not familiar with the solution to a basic problem.

Faculty can really make a difference in student development by changing some traditional teaching styles. Undergraduate students could be better prepared to face the challenges of practical life if they had more "hands-on" training in labs instead of only learning theoretical aspects in a structured class. Some instructors give open-notes and open-book exams, therefore some students feel prepared without studying much. Some students are always looking for the easy grade by copying other students' programs and assignments. Instructors should make-sure students have learned the basics of a subject by giving them some closed-book "pop" quizzes.

Higher authorities may have noticed that more staff is required to improve the entire Computer Science system. It is a matter of concern to Foreign Students that a NEIU diploma should say, "Bachelor of Science in Computer Science. It is not well accepted in some foreign countries without a major written on the diploma. Computer Lab Consultants also deserve a pay raise. It is just a matter of time until the Computer Science Program at NEIU will be well-known across the country. Students currently enrolled in the C.S. Program will see an improvement in the program and will automatically recommend others to become part of the program. Please E-mail your comments and suggestions to: uahameed@uxa.ecn.bgu.edu



Students from all areas of study often use the Computer Lab on the second floor of the Classroom Building.

Soccer

continued from back page

In the loss to NU, Freshman Curt Stevens was named the "man of the match". Stevens recorded six shots-on-goals and leads NEIU with thirty-three shots-on-goal for ten points overall for the season.

Hannan is optimistic about the rest of the season. "We're at where we should be for a first year Division I program." Hannan also realizes the struggles of a new Division I program. "The biggest thing right now is a lack of bodies."

The Golden Eagles are currently 0-14 with four games remaining on their schedule. The next home game is against Valparaiso University on October 26th at 3:00 p.m.

The Mid-Continent Conference Tournament for soccer will be held on November 5-6.

EXAMINE MEDICAL TECHNOLOGY

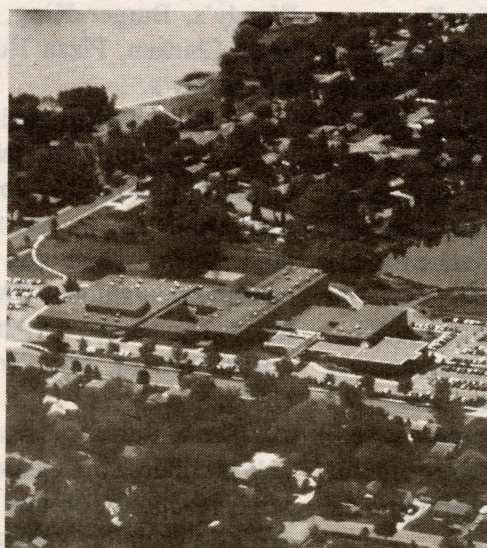
A career in Medical Technology is worth a closer look! The Department of Health and Human Services predicts that over 50,000 new jobs will be created for medical technologists by the year 2000. The profession offers: flexible work schedules, a wide variety of work environments, and job opportunities in all parts of the country.

Now examine Rush University's Bachelor of Science Degree in Medical Technology. The hallmark of Rush is its unification of education and practice which promotes a dynamic and evolving learning environment. The faculty are practitioners as well as teachers and researchers, demonstrating up-to-date professional knowledge in the clinical setting while transmitting theoretical and practical expertise in the classroom. The foundation of the University is an outstanding patient care setting; Rush-Presbyterian-St. Luke's Medical Center is recognized as one of the leading hospitals in the nation.

A campus visit for people interested in Medical Technology is scheduled for Friday, November 18th, at 1:00 p.m. Tours of Rush's medical laboratories will be included. If you would like to attend, contact: College Admission Services, 1743 West Harrison Street, Room 119, Chicago, Illinois 60612, (312) 942-5099.

RUSH UNIVERSITY

Medical College College of Nursing College of Health Sciences Graduate College



Northwestern College of Chiropractic

is now accepting applications for its next three entering classes.
(April 1995, September 1995, January 1996)

General requirements at time of entry include:

- At least 2-3 years of undergraduate college in a health science or basic science degree program. (Inquire for a complete list of specific requirements.)
- A minimum G.P.A. of 2.5. (A more competitive G.P.A. is favored.)
- A personal interest in a career as a primary care physician.

Northwestern College of Chiropractic offers a rigorous four year professional education. Our focus on science, diagnosis, chiropractic methods, patient care and research provides our graduates with the tools they need to work as primary care physicians in the health care environment. NWCC is fully accredited by North Central Association of Colleges and Schools and the Council on Chiropractic Education.



CAREER DAY 1994

We invite you to join us at

CAREER DAY 1994
Saturday, October 22
"Call to make a reservation"



Call: 1-800-888-4777 or 888-4777
Write: Director of Admissions
2501 West 84th Street, Minneapolis, MN 55431

The Chemical Wasteland: MSG

by Darlene Saxon

We live in a chemical wasteland, where American food processors and/or food manufactures are ruled by their wallets. To quote Ralph Nader "There is always a lag between the actual adverse impacts of such corporate trends and public knowledge about them." He states that "every industry exposed during the past thirty years, from pesticides to nuclear power to occupational diseases.

These institutional representatives from all walks of businesses, sit in on what's called a **Business Round Table**. They gather at top secret meetings and chat about food policy that effects the welfare of all of us. These representatives from the **Grocery Manufacturers of America (GMA)** and **National Association of Manufacturers (NAM)** make decisions as to how much food chemicals should be put into our foods. There are 200 American business range from food, toiletries, and cleaning products and transportation. If we take a look at these three items and apply them to the franchisees, we will see that each of the franchises have the same suppliers and owners. According to Jim Hightower's article **Food Monopoly** written for **The Texas Observer** 1978 "It is not that there is one big monopoly over food...but that there is a series of shared monopolies in the food industry."

The 'shared monopolies in the food industry' could be represented by several manufactures of canned, packaged and frozen foods. Take a look at any fast-food franchise and you can see that they all have common elements. All of them have drinks, chicken, burgers, meats, pizza, breads, potatoes, snacks, salad dressings, soups, deserts, paper towels, and napkins. Most of these foods come prepared and frozen. These prepared and frozen foods, to preserve freshness, are laced with food flavoring additives, that once inside the body causes many adverse reactions that the American consumer is not aware of.

From the Grocery Manufacturers of America, we have Pepsi, Nestle, Borden Inc., Ocean Spray Inc., Chrysler Corporation, Kellogg Co., Campbell Soup Co., H.J. Heinz Co., McCormick & Co., Inc., General Mills, Proctor and Gamble Co., The Clorox Co., Tasty Baking Co., National Pizza Co., The Quaker Oats Co., Sara Lee Corp., and The Dial Corp.. To correlate the 'series of shared monopolies' we have at NAM General Mills, The Dial Corp., McCormick & Co., The Dow Chemical Co., Chevron Corp., and the Sara Lee Industry".

To conclude with a quote from Ralph Nader. "There is always a lag

between the actual adverse impacts of such corporate trends and public knowledge about them." Nader says to corporations, "stop stealing, stop deceiving, stop corrupting politicians with money, stop monopolizing, stop poisoning the earth, air, and water, stop selling dangerous products, stop exposing workers to cruel hazards, stop tyrannizing people of conscience within the company and start respecting long range survival needs and rights to present and future generations.

MSG

Individuals who are sensitive to **Monosodium Glutamate**, a food flavoring intensifier, will have to continue to read all food labels for hidden MSG. The new labeling laws that were passed in 1993 don't cover "MSG if it is a part of some other flavor enhancer." However, if its 100% pure it has to be on the label. The first issue is still 'up in the air' as far as the FDA is concerned" according to Assistant States Attorney Debra Hagan who lectured at the National Organization Mobilized to Stop Glutamate (NOMSG). If MSG is a part of another food additive has been an issue for discussion since 1992. In the 1992 **Independent** "The FDA also plans to require that flavor enhancer MSG be declared on the label whether it is added as a separate ingredient or as a component of protein hydrolysates (HVP)."

In the January-February 1992 issue of the **FDA Consumer**, "Food Labeling" quoted the Commissioner of the Food and Drug Administration, (FDA) David A. Kessler, M.D.. He stated the goal of the new labeling proposal: "A label that the public can count on." This goal has three objectives: 1) "to clear up the confusion; 2) to help us make healthy choices; 3) to encourage product innovation, so that the companies are more interested in tinkering with the food in the package, not the words on the label."

If we take each of these statements by Kessler, and break them down and apply them to the current food labels. The first one, 'A label the public can count on'. If its a label that we can count on, why did Dawn Scheer have to die from a hidden source of MSG in the food?

On March 24, in Thursday's issue of **Newsday**, Scheer's autopsy report from Suffolk County Medical Examiner, Sigmund Menchel indicates she died from "anaphylactic reaction following ingestion of the egg roll." Scheer checked twice, the article indicated. On the menu "no MSG, salt or sugar upon request." She told the cashier that she was allergic to MSG. The server and owner assured her that there wasn't any MSG in the food. So she ordered "egg rolls" and later that night she died.

To clear up the confusion. If you were to look at food label would you know these words? "Ajinomoto,

Glutacyl, Glutavene, Kombu Extract, Mei jing, Subu, Vestin, and Weijing." Unlikely! Most people who read these type of food labels need a degree in chemistry. These are brand names which contain a significant amounts of MSG.

According to George Schwartz, M.D., whose book **In Bad Taste, The MSG Syndrome** (1988) identifies misleading labels. For example, Natural Flavoring (NF) and Hydrolyzed Vegetable Protein (HVP) have 20% MSG. The new labels say nothing about the 20%. Other names he included are Accent, Gourmet powder, and Chinese seasoning.

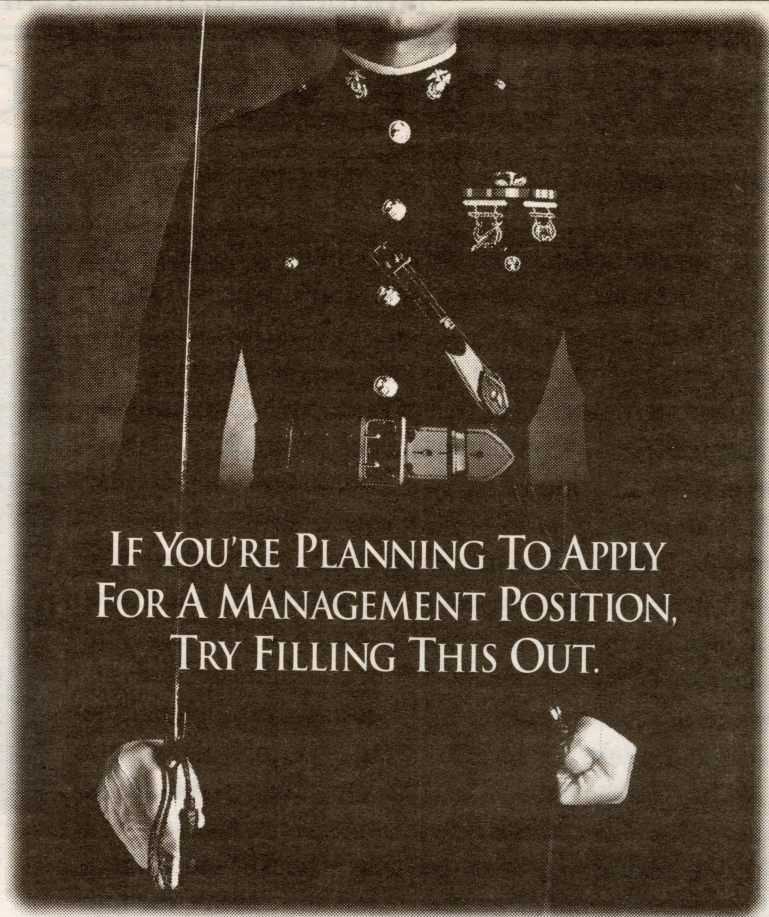
While the book was in progress, Schwartz did research on fast-food restaurants that serve food containing MSG. They are as follows: Wendy's, Burger King, Kentucky Fried Chicken, Pizza Hut, Arby's, and Denny's.

To make healthy choices. Sarah, a seven year old girl, cannot make these decisions herself. So her mother Mary Ann Conley has to read all food labels. Sarah can die if she consumes any amount of MSG. With misleading labels, we American are not exercising our "freedom of choice".

The reason for stricter food labels is children are experiencing allergic reactions, or they are experiencing a chemical imbalance due to these food additives, preservatives, and flavor enhancers. If the hypothalamus acts as a liaison for the

brain, and that part of the brain is damaged by MSG, would it be too unreasonable to ask the regulators that make these food additive decisions to stop and review all the adverse reactions to MSG, going back 30 years.

To encourage product innovation, so that the companies are more interested in tinkering with the food in the package, not the words on the label. The current status of the food labels seems that the food processors are more interested in 'tinkering with' the food when they knowingly add toxic food additives.



IF YOU'RE PLANNING TO APPLY
FOR A MANAGEMENT POSITION,
TRY FILLING THIS OUT.

Not everyone can get into our outfit. But if you've got what it takes to become a United States Marine Officer, you could get the ultimate white collar job. To fill this position you have to be smart, tough and able to handle a tremendous amount of responsibility. In short, you have to be a leader. Officer Candidates School (OCS) is where you'll develop these skills. See if you've got what it takes to be a Marine Officer. It could be the perfect fit.

Marines
The Few. The Proud. The Marines.

MARINE OFFICER

If a business suit is not quite what you want after 4 years of sitting behind a desk in school, stop by the Marine Corps Officer Selection booth and ask Captain Swanson or Staff Sergeant Carter about our suits and challenges, or call 1-800-945-3088 for more information.

The staff of the Independent wishes its readers a happy and safe Halloween

Entertainment

HOOP DREAMS Hits Home

Rating: PG-13

Running time: 180 minutes

Premiered October 21st at Local Theaters

by Mable L. Buckner

HOOP DREAMS first premiered at the 1994 Sundance Film Festival and won the audience award for best documentary. Now this melancholy tale of two African-American youths has hit the big screen in Chicago.

This film tells the true-life story of two young boys who dream of playing in the NBA. At the request of the filmmakers (Peter Gilbert, Frederick Marx, and Steve James), distributors, viewers, and reviewers have been asked not to reveal the intimate details of the boys' lives so as not to spoil the reaction of the audiences.

Without giving too much detail, the film is about two young boys, William and Arthur, who have committed their lives to the game of basketball. They live in an impoverished, urban environ-

ment and despite hard-hitting tragedy and distractions, they remain focused on their dreams. Their faith in the game unites them with loved-ones and provides them with inspiration and hope.

Throughout the film, the boys' family members also share their dreams, and motivate the young men to leap to greater heights. There is a keen focus on the boys' lives and their drives to achieve excellence according to the parameters set by the game of basketball. However, while this film successfully explores the competition of the game, it provides an intimate view of the entire process of growing-up, coming of age, and family conflicts. I highly recommend this film to anyone who is interested in real-life drama and the struggles to achieve greatness.

Motivator to "Stand and Deliver"

Northeastern Illinois University, Aspira, and NSAB Welcome

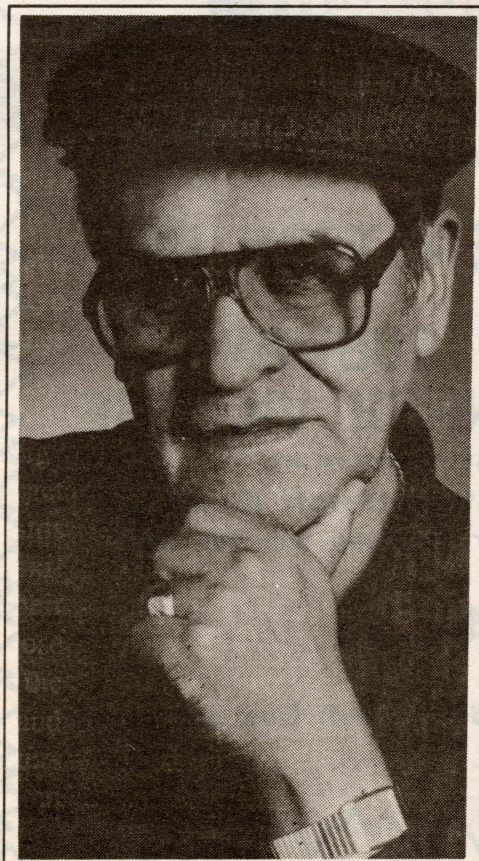
Jaime Escalante

"GANAS"

Motivator and Educator

Friday, October 28, 1994

University Auditorium : 1:40 p.m.



Jaime Escalante, an outstanding educator, will be visiting our University! For those who do not know Mr. Escalante, he was the character portrayed in the 1988 movie *Stand and Deliver*. The movie depicted his teaching experience with a number of East L.A. High School mathematics students. With this movie, people nationwide were enlightened by Mr. Escalante's very basic, yet ingenious philosophy about teaching mathematics. Anyone can learn math if they have the "ganas" or "desire" - a philosophy that definitely can be applied to many, if not all disciplines.

BECOME A
PARALEGAL

The
Writing's
on the
Wall...

Make Your Degree
More Marketable

Roosevelt University's
American Bar Association Approved
Lawyer's Assistant Program

- ☐ 20 years of paralegal training excellence in the midwest
- ☐ Convenient 4 month daytime or 8 month evening sessions
- ☐ Representatives will be on campus on Nov. 1, 1994

To meet with a representative on your campus,
call collect: **(312) 341-3882**

"The Sisters Rosenweig": A Rare Combination

Currently showing at the Shubert Theatre, 22 W. Monroe
Ticket prices: \$22.00 to \$47.00
(312) 902-1500

by Mable L. Buckner

For Anton Chekov's three sisters, Olga, Marsha, and Irina, the trip from their provincial home to the high life of Moscow was a world away and a dream that would never be realized.

For Wendy Wasserstein's Brooklyn-born Rosenweig sisters (Sara Goode, Gorgeous Teitlebaum and Pfeni Rosenweig) the world is little more than a credit card and a plane reservation removed from reality. The global village is their oyster, and yet their search for happiness, for identity, and for love is as rueful and aching as any Russian play could guarantee.

This is the beauty and charm of "The Sisters Rosenweig" which is one of Wasserstein's most beguiling, sophisticated and deftly crafted play to date. Sara (Linda Thorson) is a fifty-four year old international banker based in London. She is several times divorced as well as the mother of a teenage daughter named Tess (Annie Gwathmey) who seems more English than the cabbage-rose wallpaper in her luxurious Queen Annie townhouse. Her slightly younger sister, Gorgeous (Nancy Dussault), is a housewife, mother, and ebullient radio talk show host who has kept the faith, living a

a traditional suburban life with a husband and children. The baby Rosenweig, Pfeni (Joan McMurtrey) is forty years old, a globetrotting journalist, and a travel writer with a Bohemian lifestyle and a bisexual boyfriend, Geoffrey Duncan (Patrick O'Connell) who portrays a director in London's West End.

They have all gathered to celebrate Sara's birthday along with Mervyn Kant (Greg Mullavey), who is one of Wasserstein's most inspired creations. Kant, a New York furrier who supplied fake skins for the costumes in one of Geoffrey's shows, is now a recent widower and like all the people in the play, he too, is a worldly man. But he also, initially at least, is rejected by Sara because he is "too Jewish". Kant, in Sara's belief, is too much like the world she had to leave behind in Brooklyn so she could forge some other image.

As in Chekhov's "Three Sisters", "The Sisters Rosenweig" talk, laugh, eat, drink, hurt and get hurt. They muse about face creams and accessories; but their anxieties, their self-doubts and their unrealized dreams lurk very close to the surface. As in Chekhov, the tension between the laughable and the tragic is palpable. "The Sisters Rosenweig" is both worldly and wise: a rare combination.

Professor of the Week

compiled by Sara Capetillo



Martin Felix / Independent

Name: June Sochen
Birthplace: Chicago, Illinois
Years Teaching at NEIU: 30 years
Field of Expertise: United States Cultural History
Achievements: B.A., University of Chicago. M.D. and Ph.D., Northwestern University. She has also published books and articles relating to various topics. "My greatest achievement is conveying historical ideas to the students."
Teaching Philosophy: "My goal is to create curiosity and intellectual interest."
Future Plans: "To do research and writing on Children's History."

Hobbies: Running, playing tennis, going to the opera, and reading.
Special Committees: Associate Chair of the History Department.
Words of Inspiration: "Be engaged in life and thought."

Sochen

continued from front page

Sochen has been doing research, lecturing, and writing about American women for over 20 years. Her most recent book is *Mae West: She Who Laughs, Lasts*. She received the Delta Kappa Gamma Society's Educator's Award for her book, *Cafeteria America: New Identities in Contemporary Life*. Some of her other books include: *Movers and Shakers: American Women Thinkers and Activists, 1900-1970*; *Herstory: A Woman's View of American History*; *The Unbridgeable Gap: Blacks and their Quest for the American Dream*; and *Consecrate Every Day: The Public Lives of Jewish Women, 1880-1980*. She edited and wrote the introduction for *Women's Comic Visions*, which celebrates con-

temporary women's humor and women comedienues.

Sochen has been on the NEIU faculty since 1964. She earned her Ph.D. and master's degrees in history from Northwestern University and her bachelor of arts from the University of Chicago.

"I don't want to say that the BGU award is the capstone to my career because I think I have a lot of good years left," Sochen told the fyi in an interview. "I think it is a lovely acknowledgment from the board of the work that I have done and the value they place on teaching."

Dr. Sochen will be on leave in the Spring of 1995 in order to make special presentations at other BGU universities.

Eagles

continued from page 8

year player, put in extra hours of hard work to improve her driving skills. Hull says, "I spent as much time on the course as possible. When I wasn't on the course I was at my house with the clubs out. I hope I can get a few more games in before the snow." Senior Bonnie Bushing added to Hull's comment, "We went to the golfing range before our meets so we would come out with hitting accuracy."

This season was the last for Yahn, Bushing, and Darlene Shuster. Shuster summarizes her time spent on the team, "I'm sad this has to come to an end. I had a good time being on the golf team here and I learned a lot from John." Yahn adds, "John is a great golfer and a great coach. He really cares about his players."

The Lady Eagles will be playing a Spring season beginning next April. If anyone is interested in becoming a member of the NEIU Golf team please contact John Nation at (312) 794-6128.



The Meyers are one of the many families who enjoy riding the CTA

"OUR FAMILY RULES!"

"Our family rules do not include worrying about traffic and parking. We think having fun riding the CTA together is more important."

There is no better way to get downtown or around town than the CTA.

Make our schedule part of yours.



FOR PEOPLE WHO KNOW THE BEST WAY TO GO!

SUBWAY

EVERY WEDNESDAY IS
 NORTHEASTERN DAY
 AT SUBWAY
 SAUGANASH VILLAGE

4157 W. PETERSON AVE.

Show your student/staff ID and get
 any regular footlong sub for only

\$2.99 !

Double Meat add'l. Limit: Five per person.

"The Secret Gardens" of the Jane Addams Hull House

A new look...A bright future

by NEIU Senator Estelle Martin

For over 30 years, the Jane Addams Center has served the Lakeview East Community with programs designed to help people meet their basic needs, providing opportunities for mutual growth and enjoyment. Each year over 10,000 people are served through recreational programs such as swimming, photography and ceramics, including programs addressing more fundamental issues such as daycare services for teen parents outreached to troubled youth.

Recently, JAC has experienced a wave of renewed vitality and growth evidenced by the explosion of new programs. This fall the New Directions Youth Recreation Program will be providing at-risk youth with positive alternatives to "street-time" through participation in weekend basketball leagues and the creative arts. Another exciting program is the Arts Program which matches children with artistic skills and interests with mentors in a creative field such as photography or graphic design. These mentors will encourage the children and help them see how their talents can translate into career opportunities. Thousands of people who use this Center can be

part of the overall creativity. It also shows in the new mural gracing the walls of the building.

Northeastern Illinois University of Chicago students recently gathered together to design and execute concepts for the Jane Addams House mural.

The mural painting was directed by Professor Santiago Vaca originally from South America's Ecuador. This has been his sixth experience and fifth year of teaching mural painting technique. At NEIU, Vaca teaches his students to bring life to their paintings, through color, light, change of space, and shadow. At times, two murals have been painted during a semester. Every one of his six murals have been painted at some meaningful location on the north side of Chicago.

Students and creators quoted, "We don't mind the children and neighbors of the community who play around us. We're working one-on-one together to give all of us one big creation." The well-celebrated JAC Open House will present On the Deck. The name "On the Deck" was recently chosen by the Jane Addams Center to describe the decks design and



Martin Felix / Independent

NEIU's Estelle Martin presented "The Secret Garden" from last summer's mural painting project for the Jane Addams Hull House Center.

build. The newly-painted front and garden wall in back. A Volunteer Recognition celebration will be held at the Jane Addams Center in response to the NEIU students

who volunteered their time to paint the mural projects for the Center.

The Deck was designed and built by Mr. Carl Meyer who is also a volunteer.

This NEIU press release was presented by art student Estelle Martin along with Professor Santiago Vaca.

Let's all get together and see what's behind the wall

poem by Estelle Martin

Behind that wall, there's a secret garden!

There one can be born and they harden.

The rose without a thorn.

Wise old men give no scorn.

God's smaller creatures live fair in the grass.

Sun kisses their water so forever they will last.

The lion roars his tune.

Those stars made him their moon.

Sunflowers give light to the mellow air.

While tall grass keeps the mystique that hides there.

Yes, the jungle lion roars.

Life's colors glow galore!

Go and see.

Sports, art, and dance should take you far.

With new programs like these, the future of the Jane Addams Hull House Center is looking brighter than ever. This feeling is shared not only amongst them but by many in front and within the neighboring walls of the Jane Addams Center.

At RUSH it's a fine line that separates the University



from the Hospital

When students first visit Rush University they often ask, "Where's the campus?" And our reply is, "Everywhere!" That's because you will find our students throughout Rush-Presbyterian-St. Luke's Medical Center. Whether you're in a classroom, patient room or operating room, you're at Rush University. The hallmark of Rush is its unification of education and practice which promotes a dynamic and evolving learning environment. The faculty are practitioners as well as teachers and researchers, demonstrating up-to-date professional knowledge in the clinical setting while transmitting theoretical and practical expertise in the classroom. The foundation of the University is an outstanding patient care setting; Rush-Presbyterian-St. Luke's Medical Center is recognized as one of the leading hospitals in the nation.

For more information about bachelors degrees in Nursing, Medical Technology, and Perfusion Technology, or masters degrees in Nursing, Occupational Therapy, Speech-Language Pathology, Audiology, Clinical Nutrition, Health Systems Management, or doctorate degrees in Nursing, Anatomical Sciences, Biochemistry, Immunology, Medical Physics, Pharmacology, Physiology, or Neurosciences, contact: College Admission Services, 1743 West Harrison Street, Room 119, Chicago, Illinois 60612 (312) 942-5099.

RUSH UNIVERSITY

Medical College

College of Nursing

College of Health Sciences

Graduate College

Members Wanted!!! Dead or Alive!!!

Hellenic Club seeks members

by Nektaria Ress and Mike Bildires

Watch out for NEIU's Hellenic Club, it's on the make! This relatively new student organization has been in business for 13 months, and is now looking for new and exciting people to join the fun, jump on the bandwagon, get in tune and all that jive.

The Hellenic Club is not totally silent, in

fact, this club is jumping and it wants everyone to hear its roar. Last year, the Hellenic Club was involved in numerous events. Some activities included dancing and rich FOOD during International Day, a very successful bake sale, trips and other fun stuff.

The Hellenic Club is also very serious and concerned about other people in society in wanting to help in any way it can, an excellent example was something that the club plans to

repeat in future years, especially around the holidays. What the club did was sponsor a family during the normally festive Thanksgiving holiday that isn't so festive for everyone if they don't have the necessities most people take for granted. So the Hellenic Club donated food and clothes to the family and plan to do so this year too if all goes well.

For a new club, these are pretty major accomplishments. In order though to continue in the clubs success, many more active members are needed to join to make it happen.

Another thing to keep in mind is that the Hellenic Club is not only for Greeks. This club is open to anyone who has ever had an interest or a fascination with the Greek culture and traditions. The

Accessible

continued from front page

This year three classrooms (S131, CLS 3105, and S129) have been completely remodeled. Hartman is eagerly awaiting responses to the new chairs, larger tables, and "T-Leg" tables.

"Our goal now is to make our rooms as accessible as possible no matter who uses them. You don't have to be tall, short, pregnant or disabled. We want all of our chairs and tables to allow flexibility. Hopefully by surveying reactions to these three rooms from maintenance, carpenters, faculty, and students we will find-out their reactions and more of their needs. But we can only do a couple classrooms at a time. We have to take steps in order to run a whole marathon," Hartman said.

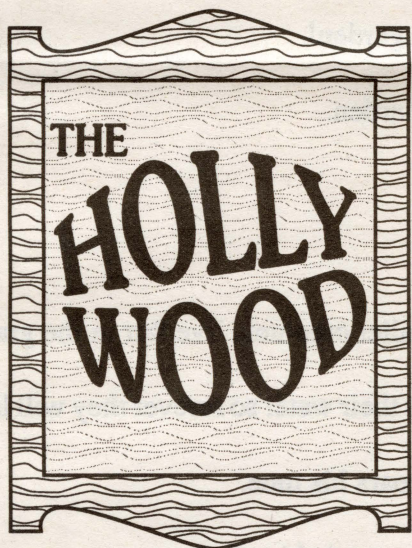
Hartman is optimistic toward the university support groups as to solving students problems.

"The university is supportive of all students no matter what. They just have to ask, there are many outlets that will help. Our students are our best product and no one is denying access to anyone. Our faculty is strongly committed and everyone is moving together to reach a common goal."

Places are available to contact if you have a problem or disability at NEIU such as; Student Support Services, The H.E.L.P. Office in B-110, the Student Affairs Office, and the Deans Office.



Hellenic Club members include (from left to right) Andy, Nikki, Sophia, and Steve.



Newly Renovated

- Darts
- Pool Tables
- Satellite and Cable
- Big Screen TV's
- Sports and Movies
- Drink Specials
- Special Events

Just two blocks East of Northeastern's campus

Featuring



Tap Beers

at Neighborhood Prices

Northeastern's Campus Bar

A Nice Atmosphere and A Friendly Place to Drink
3301 W. Bryn Mawr ▪ (312) 588-9707

Hellenic Club is for any race, religion, color, or ethnicity. The Hellenic Club is all about unity! Everyone interested is urged to step forward and join in the tradition of the Greeks. Meetings are nice and enlightening, especially when the gang gets all together for a night out on the town. Greeks are not only about gyros. Don't just take their word for it, come in and see what the Hellenic Club is all about. People might be surprised!!

The Hellenic Club meets every Tuesday at 1:40pm (during activity hour) in S-111. Upcoming events for discussions include a Holiday Food Drive, Bake Sale and a Field Trip.

1994 Mazon Creek Open House to Open November 5th

The 1994 Mazon Creek Annual Open House is coming up soon. A full afternoon of events has been scheduled, so be sure to come; bring your kids, family, and friends too! Refreshments will be served, exhibits will be on display, and informative and interesting talks will be given on Saturday, November 5th, at the Science Building beginning at 12:00 (noon) to 5:00 pm. Talks will begin by 2:00 pm, a raffle drawing will be held at 1:45 pm.

Featured speakers will include Peter Laraba, Field Museum of Natural History-Chicago, The Making of "The DNA to Dinosaurs" exhibit and Steve Sroka, University of Illinois-Champaign, Curating the Small Paleontologic Collection.

This year's Open House will feature a kid's activity. Copies of the Mazon Creek Faunal Bibliography and Mazon Creek slide sets will be on sale. Also, Mazon Creek hats, T-Shirts, tote bags, buttons, sweat shirts, and various maps and books will be offered for sale as well. As usual, specimen identification will be offered, so bring your specimens. Also, bring any specimens or exhibits you feel others may want to see. Please support the Mazon Creek Project. The items we have for sale make great gifts for the Holidays. For more information, please contact our curator, Dr. Christopher T. Ledvina, at ext. 6263.

Halloween

continued from page 2

- Haunted House Elmhurst/Bensenville Jaycees.** Oct. 24-31, Admission is \$4. 1 child under 12 free with an adult admission, other children under 12, \$2.50. York Commons Pool, 665 S. York, Elmhurst. (708) 993-8985.
- Haunted Labyrinth.** Oct. 26-28, 7-10 pm; Oct. 29-31, 6-10 pm. \$4. St. Ben's Church Basement, 2215 W. Irving Park. (312) 583-2448.
- Ignatz's Tomb.** Oct. 24-31. Mon.-Thur. 6:30-10 pm. Fri.-Sat., 6:30-11 pm. \$5. 4140 W. Addison. (312) 286-4040
- Old Town Haunted House.** Over 25 gruesome rooms created by Chicago area artists and designers. Oct. 29, 5 pm-midnight; Oct. 30, 5-11 pm; Oct. 31, 4-11 pm. \$5. 226 W. Schiller. (312) 929-1709.
- Phantom Of The Opera.** The original 1925 classic silent film

starring Lon Chaney with live pipe organ accompaniment. Oct. 28, 8 pm. \$6. Gateway Theatre, 5216 W. Lawrence. (312) 777-7785.

•**Six Flags Fright Fest.** Six Flags Great America transforms the entire park for Halloween. Oct. 29-30. Season passes from the 1994 season are valid for admission. Children under 3 are free; children 4-10, \$24; Adults 11-59, \$28; Adults 60 and up, \$14. Six Flags, 542 N. Illinois 21, Gurnee. (708) 249-2133.

•**"Skulls" Haunted House.** Oct. 28-31, 7-10 pm, with a "kids only" matinee on Oct. 30 from 3-5 pm. \$3. Franklin Park Pool at Pacific and Calwagner in Franklin Park. (708) 455-2852.

•**Terror On The Lake.** Oct. 27-31, 7-10 pm. Special "lights-on" matinee Oct. 29, 3-5 pm. \$4-\$5. North end of Lake Park (Lake Opeka), Touhy and Lee, Des Plaines. (708) 518-6977.

•**The 400 Theatre.** Children's Halloween Bash. Oct. 29. Starting at 10 am. 6746 N. Sheridan Rd, Chicago. (312) 764-9100.

RAISE YOUR CONSCIOUSNESS

USE
LESS
PLASTIC.



THE ONE CARD FOR CREDIT, CASH & CALLING

The AT&T Universal MasterCard. Call 1 800 438-8627 to apply.

SPORTS

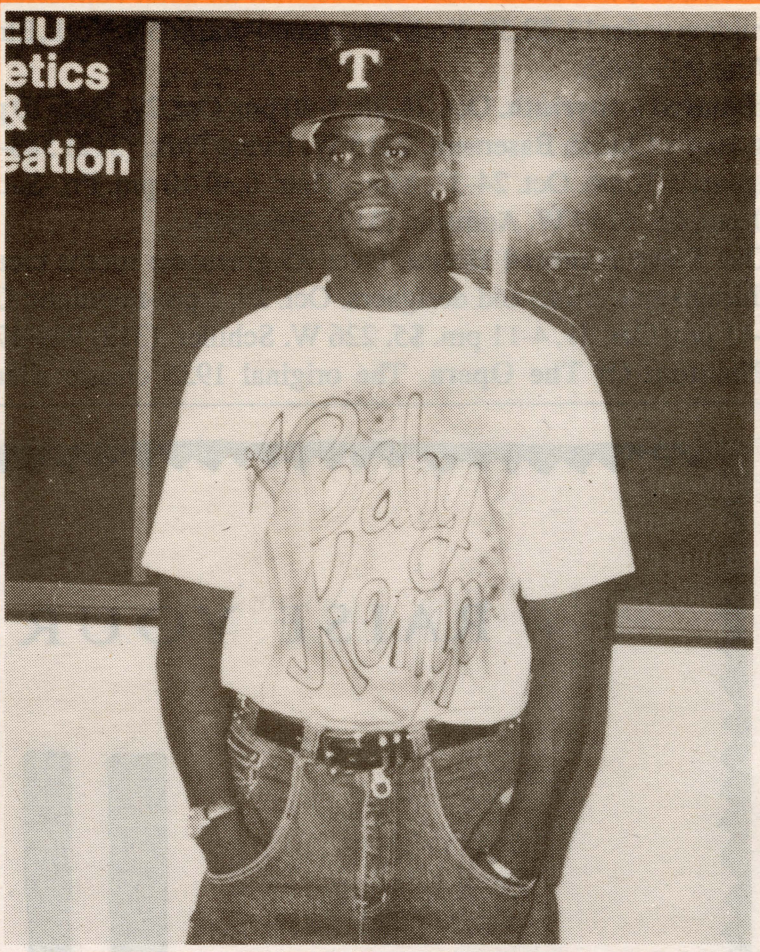
NEIU competes at the Division
I level in the Mid-Continent
Conference

Athlete Still Beating the Odds
The true-life story of Nate Henry

The one thing that I've known all my life is that hard work pays off. My hard work started in August 1989, when I graduated from high school and decided to live independently instead of going to college right away. During high school I had worked at Treasure Island and Dominick's food stores, but now I was anticipating living on my own and I knew that those jobs wouldn't get my rent paid. Being extremely determined, I went out and got two jobs. During the daytime I worked for Sears Roebuck and Company and during the late-night shift I was a stockboy for a Jewel food store. Monday through Friday my schedule was full of nothing but work. Although I didn't have any leisure time for fun activities, that didn't stop me from playing basketball. I worked two jobs, because I had to keep my bills paid, but basketball was the only thing that could ease my pain and sorrows. On the weekends I could always get a good workout at the playground playing ball, but during the

weekdays my schedule was so busy, that when I got home from work I would take my basketball and practice inside my apartment or sometimes I would go outside to play and work on my moves.

I truly wanted to play basketball for a college, but I thought that I'd never be able to get back into school, because of the responsibilities that I had assumed living independently. One day I got on my knees and prayed to God to take me away from the pain of working hard and put me back in school. It was extremely hard, but I always kept my faith in God, knowing that he would see me through my troubles. In the summer of 1991 I quit both of my jobs and registered for 18 credit hours at Triton College. After quitting those two jobs, I was more than eager to go to school, because this was my chance to play basketball. I knew that taking 18 credit



Independent / Martin Felix

Nate Henry "AKA" Baby Kemp is currently a basketball player for the Golden Eagles. Nate attends NEIU, competes in sports, and has a wife and three children.

see **Nate** page 8

Tough Loss for Soccer Team in First-Ever Home Match



Independent / Steve Fitzer

NEIU Goalie Matt Stabile "heads-off" the ball against Northwestern. NEIU loss the match 1-0.

by Joseph Yovino

For the first time in NEIU's history a division I soccer team played a home match. On October 11th., the NEIU soccer team opened its first-ever home game with a tough loss to the visiting Northwestern University Wildcats. NEIU held NU scoreless for sixty-two minutes of play before Northwestern scored its first goal.

Second year head coach John Hannan has been pleased with his team's performances throughout the season. Hannan says of his team, "I'm satisfied with where we are at right now. We have been in every game." Hannan was right. His team has lost six of its fourteen games by one goal including a double overtime loss to nationally ranked Memphis State University.

see **Soccer** page 9

Shaded boxes denote home games										
Sports Calendar										
Oct. / Nov. Dates	Mon. 24	Tue. 25	Wed. 26	Fri. 28	Sun. 30	Tue. 1	Fri. 4	Sat. 5	Sun. 6	Tue. 8
Volleyball				Eastern IL University	Western IL University	UW-Milwaukee	Missouri-KC University			UIC
Men's Soccer			Valparaiso University	University of Louisville	University of Cincinnati	DePaul University		Mid-Continent Conference Tournament		
Men's/Women's Tennis							Rolex Invitational			