

5-28-1996

Independent- May 28, 1996

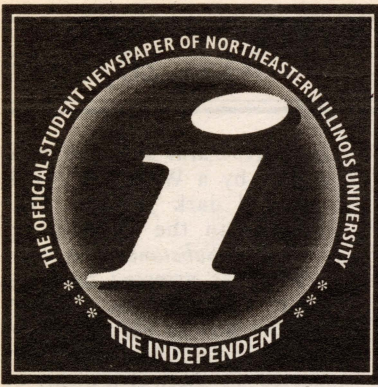
Kimberly A. Dudash

Follow this and additional works at: <https://neiudc.neiu.edu/independent>

Recommended Citation

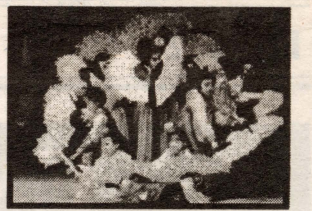
Dudash, Kimberly A., "Independent- May 28, 1996" (1996). *The Independent (1988-present)*. 152.
<https://neiudc.neiu.edu/independent/152>

This Newspaper is brought to you for free and open access by the NEIU Student Newspapers at NEIU Digital Commons. It has been accepted for inclusion in The Independent (1988-present) by an authorized administrator of NEIU Digital Commons. For more information, please contact neiudc@neiu.edu.



Asian Heritage Week celebrated

-- story on page 3



The Independent

Volume 12, Issue 8

Tuesday, May 28, 1996

Chicago, Illinois

Golden Eagles' flight to the College World Series

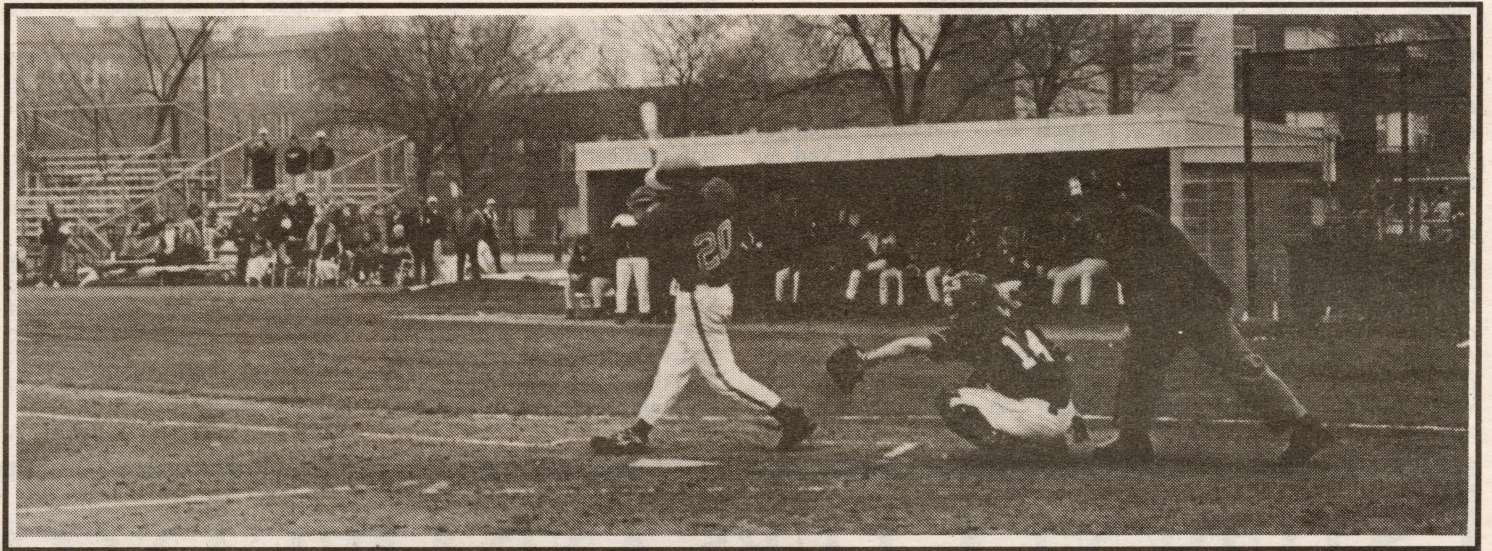
By Mike Ryan
Sports Editor

When the Golden Eagles baseball team took the field in late February, they never in their wildest dreams thought that they would be playing for a shot at the college world series in Omaha, Nebraska.

On Thursday they will continue to pursue the ultimate dream of a world series at Stanford, where they will square off against the Florida State Seminoles in the opening round. This will mark the first time that a NEIU baseball team has made it to the NCAA tournament.

The Eagles went flying into the Mid-Con championships with the conference title, which gave them the right to host the conference tournament at home. In the end the Eagles once again rose to the top, winning the tournament and earning the right to play in the Western Regional double elimination tournament.

A major factor in the success of the baseball team has been the



Golden Eagle Sean Holton slams the Northern pitch into the outfield. The Golden Eagles beat Northern 5 to 1.

photo by Kimberly A. Dudash

outstanding pitching of left-hander Jaime Puerto. Puerto has collected nine victories and is slated to be the starting pitcher against Florida state in the opener. Jim Jasper has also pitched well

for the Eagles. On the offensive end, first baseman Rob Bruce has done some damage to opposing pitchers. Bruce totalled a .355 average with nine homers and 51 RBI's. Matt

Dunne and John Will have also hit well throughout the season and tournament.

Head coach Jim Hawrysko and his team will enter the tournament with a 31-27 record.

If the Eagles win the opener, they will face the winner of Mississippi State-Santa Barbara game on Friday. A loss will set them up against the loser of the Stanford-Cal State game.

Recent robberies raise campus safety issues

By Shana Stone
Staff Writer

Two robberies have occurred recently on and near campus.

The first incident occurred May 6, at approximately 12:15 p.m. in the northeast stairwell of the Science Building at the first floor emergency exit. The victim was approached from behind and pushed to the ground. The offender took jewelry and money.

The second incident occurred later that day at approximately 2:30 p.m. in the 5500 block of North Bernard. The victim was pushed to the ground from behind. The victim described the offender as a white male in his early to mid 20's, approximately 5'5" tall, and weighing 145 lbs.

Director of Public Safety William Curtin does not feel that there is any need for alarm. He said that these were the first robberies to occur on or near campus this year.

To avoid potentially threatening situations, Curtin recom-

mends that students and staff "avoid shortcuts, don't walk through alleys, walk in groups, and always be aware of their surroundings."

One key to safety is to stay alert. Stick to well lit, busy streets, especially at night. Keep your car in good running condition, and make sure that it has enough gas. If a suspicious-looking person gets on an elevator with you, don't hesitate to get off. Invite a friend to accompany you when biking or jogging.

In the past, members of the NEIU community have complained about inadequate lighting in the parking lots; lighting has now been improved.

NEIU has an escort service that is available seven days a week. Call extension 200 to have a member of Public Safety walk you anywhere on campus.

Public Safety urges anyone with information regarding the incidents on campus to call them. The on-campus extensions are 200 or 203; from off campus dial 794-3078.

Parking lot receives summer face-lift

By Mike Buino
Associate Editor

It would be hard not to notice all the changes that are being made to the parking lots that run along the north side of the campus. The construction going on is the final phase of the construction that began in 1989.

For pedestrian safety, access to the north side of the Classroom building has been closed until renovations have been completed. The doors on the north side of the building have been locked and will remain so until Lot A reopens.

Assistant Vice President for Facilities Management Joseph P. Kish said, "We are doing a complete rehabilitation on the Lot A parking area and also improvements on the draining system."

Heavy traffic and surface water have caused pavement failure in Lot A. In order to change the elevations of the parking lot and add the needed catch basins to remedy this problem, the lot had to be completely torn out.

"This work will result in the

existing entrances and exits in Lot A to be eliminated, and a new entrance/exit aligned with North Central Park to be constructed," remarks Kish, "Extensive repairs will also be made to the sidewalks adjacent to Lot A and a pedestrian walkway will be created where Lot A joins Lot D."

This phase of the construction, currently ahead of schedule, is planned to be completed in June. When this stage of the construction is completed the next stage of repairs will begin in Lot D. Lot D will be closed in June after the refurbished Lot A opens for parking. Lot D will be closed until the early part of July for repavement and other minor repairs.

Pedestrian safety has been one of the major factors during the construction. "With all the changes these past 7 years we have been trying to separate [pedestrians] as much as possible from the vehicles," comments Kish.

The number of handicap parking spaces will be increased in Lot A. The handicap spaces in Lot D will be moved closer to the building, along the sidewalk. The new exit is already controlled by three

stop signs and will allow easier access to westbound Bryn Mawr. The new pedestrian walkway that will separate Lot A and Lot D will provide pedestrians with a safe way to get across campus without having to cut through the parking lots. A new university information sign will also be constructed at the Northwest end of the campus, along with some new trees and shrubbery.

A new drop-off zone is in planning stages with the alderman's office. The new drop-off zone would be on Bryn Mawr in the area where the existing entrance to the parking lot is located. A five-minute parking area will be located at the Public Safety building, so that people who have to conduct business there will not obstruct traffic. These improvements will hopefully fix many of the congestion problems that now exist on campus parking lots.

The tab for the construction of Lot A, Lot D, and the surrounding sidewalks comes to a total of \$405,000. State funds paid for approximately \$45,000 of the repairs, while money made from the sale of parking permits paid for the remaining \$360,000.

President contract extended to August 31, 1999

By Kimberly A. Dudash
Editor-in-Chief

The Board of Trustees voted to extend the contract of President Salme H. Steinberg through August 31, 1999 at a special meeting held on April 25. The Board called this special meeting in order to gain feedback from the university community regarding the proposed presidential search.

During the question and answers session, the possibility of

extending President Steinberg's contract was discussed with representatives from student, faculty and staff constituencies. The majority of the constituencies was in favor of extending the contract.

Extending President Steinberg's contract results in a savings of at least \$100,000.00, which would be the minimum cost to effectively conduct a presidential search, according to sources.

We are pleased with President Steinberg's performance, and that is the primary reason the Board

took this action, stated Board Chair Daniel Goodwin.

Maintaining stability during NEIU's transitional period was another concern of the Board, commented Goodwin. As the Board becomes acclimated to the campus, it decided to forego the presidential search at this time; two other top administrative positions need to be filled. Vice President of Administrative Affairs Peter Wollstein is retiring effective August 31, 1996 and the Provost position is temporarily being held by

Therese Schuepfer. Both positions involve a national search.

"I am delighted that Dr. Steinberg has accepted the appointment. I know my fellow trustees share my optimism for Northeastern's future," stated Goodwin.

President Steinberg said, "I am deeply grateful for the confidence of the Board of Trustees and the university community. We have an opportunity to work together to build a strong future for Northeastern students."

INDEX

Extension 200	2
Eagle's Forum	4
Arts & Entertainment	5
Features	6
Classifieds	7
NEIU: A year in review	8

EXTENSION 200

Extension 200 is available 24 hours a day. Members of the University Community are encouraged to contact Public Safety when they need help, motorist assistance with lockouts or jump-starts, or if they have information about these items.

To report information about a crime on campus please use the confidential information line at extension 4636. For jump-starts, auto lockouts, and all emergencies please contact Public Safety at extension 200 or 203 on campus.

*Extension 200 Reports compiled by Public Safety
Officer Bob Paprocki*



April 22 - Battery: Two staff members became involved in a dispute while at work. No charges were signed. **Theft:** A student reported the theft of a pager from the PE Building Men's locker room. A loss of \$80.00. **Theft:** A student reported the theft of a wallet from the cafeteria. A loss of \$80.00. **April 23 - Theft:** A student reported the theft of a portable phone and electronic dictionary from the Computer Lab in the Classroom building. No estimate of loss was given. **Criminal Damage:** A faculty member reported his auto being damaged while parked in the D-lot. Damage is estimated at \$1000.00.

Traffic Violator: A non-student was arrested near the campus for several violations. **April 24 - Disorderly Conduct:** A faculty member reported receiving harassing telephone calls on campus. **April 25 - Criminal Damage:** Unknown person(s) kicked an elevator door off its track in the Classroom Building. **April 27 - Battery:** A student was arrested after shoving another student in the library. **Accident:** A student reported his auto damaged by an unknown driver while parked in the K-lot. No estimate of damage was given. **Medical Assist:** A staff member with a medical condition was taken ill

while on campus. She was transported to a hospital by a friend. **April 30 - Medical Assist:** A staff member suffered a nosebleed while at work. She was treated by Health Services and released. **May 2 - Criminal Damage:** A staff member's auto was damaged by a bullet fired into the air at a gang member's funeral near the campus. A loss of \$200.00. **Theft:** A visitor to the campus reported a license plate stolen from his auto while parked in the D-lot. **May 3 - Criminal Damage:** A Pepsi machine was damaged by unknown person(s) in the Science Building. No estimate of loss was given.

May 4 - Medical Assist: A staff member was injured while on campus. He was transported to a hospital and released. **May 6 - Robbery:** A student was pushed from behind by an unknown person and robbed of cash and jewelry in the Science Building. A loss of \$4,585.00. **Suspicious Person:** A staff member reported a person loitering on St. Louis Avenue. **Station Information:** A faculty member was pushed from behind and robbed on the 5500 block of Bernard. A loss of \$290.00. The offender was described a M/W, 5'5", 145 lbs, 20's, dark hair, and black clothing. **May 7 - Disorderly Conduct:** A

false fire alarm, was activated possibly by a W/M, 5'7", dark hair, and dark jacket. This occurred in the D-building. **Controlled Substance:** A non-student was arrested near the campus with cannabis. He was taken to the 17th district. **May 8 - Theft:** A faculty member reported the theft of a poster of sports figures from the Classroom Building. A loss of \$5.00. **May 9 - Medical Assist:** A student was treated by Health Services after injuring her ankle in the Commuter Center. **Disorderly Conduct:** A faculty member reported receiving a threatening letter from an unknown person. **May 13 - Traffic Violator:** A non-student was arrested for two traffic offenses while driving by the campus. **May 15 - Station Information:** A staff member reported an associate being harassed by a co-worker. A report was made of the incidents. **May 17 - Accident:** A student reported her auto damaged while parked in the D-lot. A loss of \$200.00. **Theft:** A student reported leaving two rings in a washroom in the Classroom Building. When she returned they were gone. A loss of \$650.00. **May 19 - Criminal Damage:** Two non-students were arrested after being observed spray painting part of the athletic field.

STUDENT CLUBS AND ORGANIZATIONS

A.C.E.I.

Association for Childhood Education International meets the first Wednesday of every month above the bookstore from 11 a.m.-noon.

ASSW

Alliance of Student Social Workers meets the first Thursday of every month in CLS 4007 from 1:40p.m.-2:50 p.m. For more information call Evalyn McCoy in the Social Work Department at ext. 2860, or stop by CLS 4062. ASSW is not only for Social Work majors, participation by all students is encouraged.

Alcoholics Anonymous

Meets Tuesday (CLS 2020) at 1:40-2:50 p.m. and Wednesday (E-047A) at 12:00-1:00 p.m. These meetings are for those already in AA or feel that they want what we have—Sobriety!!

Apocalypse Literary Arts Coalition

Meets Tuesdays at 1:40 p.m. in E-041 or stop in anytime.

Art Club

Meets Thursdays, 1:40 p.m., B 119. Ext. 2918.

Assyrian Students Organization

Meets Tuesdays 6:00 p.m. - 7:00 p.m. and General Assembly meets Friday 10:00 a.m. - 11 a.m. (cafe).

Aspira Latino Heritage Club

Meets Thursdays, 1:40 p.m., S 112. Ext. 3153.

Black Caucus

Meets Thursdays in CLS 3094 at 1:40 p.m. Call ext. 3142 for more information.

Black Heritage Club

Meets Thursdays in CLS 3094 at 1:40 p.m. Call ext. 3142 for more information.

CHIMEXLA

Chicano Mexicano Latino Student Union meets every Tuesday at 1:40 p.m. on CLS 3094.

Criminal Justice Students Organization

Meets every Thursday at 1:40 p.m. in CLS 2094. Ext. 2622.

Gay, Lesbian & Bisexual Alliance

Meets every Thursday at 1:40 p.m. in CLS 2005, and every Monday at 6:30 p.m. in the Student Activities Mezzanine above the bookstore. Ext. 2622.

Earth Science Club

Meeting times to be announced. Call. Ext. 2536 for more information.

Hellenic Club

Meets every Tuesday at 1:40 p.m., S-111. Call ext. 2900 for more information.

HRDA

Human Resource Development Association. For more information contact Don Stepich at ext. 6297 or stop by CLS 3022.

The Independent

Only the best damn newspaper this side of the Mississippi. For information regarding membership, contact Kim at ext. 2812 or stop by room E-049.

Marketing Club

Meets Tuesdays at 1:40 p.m. in CLS 3081.

Management Club

For more information regarding membership, contact M. O'Malley at ext. 2648.

Muslim Students Association

Meets every Thursday in CLS 3044. Friday prayer in S-351 at 1:30 p.m.

Que Ondee Sola

Meets Tuesdays at 1:30 p.m. in room E 041. Ext. 3805.

SCEC

Student Council for Exceptional Children meets on alternate Thursdays at 1:45 p.m. in CLS 3020.

Call ext. 3040 for more information.

The Sci-Fi Club

Meets on alternate Tuesdays, 1:40 p.m., CLS 2005.

Sociology Club

Meets every second and fourth Tuesday of the month at 1:40 p.m. in CLS 2094.

Spanish Club

Meets Tuesdays at 1:40 p.m. in CLS 2081

Student Senate

Stop by E-210, above Beck's Bookstore, anytime.

UPRS

Union of Puerto Rican Students meets Tuesdays, 1:30 p.m., E 041. Call ext. 3805 for more information.

WZRD

The campus radio station broadcasts on 88.3 FM. For more information stop by EBL - 059.

May 26-June 8, 1996

Events Calendar

Sunday	Monday	Tuesday	Wednesday	Thursday	Friday	Saturday
26	27 Memorial Day No Classes	28 10am-7pm Roadway Packages Express Information Table Village Square 7-9:45pm Hollywood North Park Meeting CC 217	29	30	31	1
2	3	4 10am-1pm Kindergarten Graduation CC 217 & CC 218	5 9am-3pm Student Support Services Orientation CC 217	6 8:30am-2pm Freshmen Registration CC 217 9am-1pm UPS Recruiting Information Table Village Square	7	8 7:30am-1pm A.C.T. Exam CLS 1001



photo by Mike Tappin

Members of the Indian Student club perform a traditional dance.



photo by Mike Tappin

The Children's Dance Group of the First Korean United Methodist Church perform the Fan Dance.

Asian Heritage Week celebrated

By MIKE BUINO
ASSOCIATE EDITOR

In early April NEIU celebrated Asian Heritage Week with a week-long series of panel discussions, film and video presentations, food fairs, and artistic performances celebrating the different Asian cultures.

NEIU has the fourth highest population of Asian students of all Illinois public universities with over 900 students in enrollment. The different cultural backgrounds of these students adds to the diversity of the multi-cultured student body.

"Northeastern Illinois University is immeasurably enriched by the contributions from persons who are closely connected to the historic civilizations of East and South Asia," comments President Salme H. Steinberg.

Asian Heritage Week offered the community a chance to learn something about the cultures, traditions, environment, and cuisine of South and East Asia.

The week began with an opening ceremony and a panel discussion. NEIU professors of Counselor Education, Alice Murata and Mei-Whei Chen combined with

two prominent people in the Asian community, Joshua Pang, President of UJU Industries, and C.L. Shastri, President of the Sanskrit Association, discussed The Asian Experience.

Throughout the week, film and video presentations were on display in the Commuter Center. Films such as *Chinese Lunar New Year Celebration in Beijing* and *Festivals in Taiwan* show how much tradition is immersed in the social activity and celebrations of the culture.

The film *Korea: The Shoppers Paradise* focuses on the great shopping bargains that can be found throughout Korea. Spending a year in Korea, I quickly learned that there were many places to find quality, made-to-order, clothes, suits, leather jackets, and shoes. The finest quality items at very reasonable prices.

During my time in Korea I made a few trips to Seoul the capital of South Korea. The film *Seoul, A City On The Move*, really highlights this metropolis. The busy hustle of the crowds on the street and the tall skyscrapers lend a certain feeling of a big U.S. city but a closer look reveals the many wonderful and interesting differences. The ability to combine modern-

ization with old-world tradition makes Seoul, and all of Korea, a truly unique place on earth.

Mid-week a second panel discussion was presented by Nguyen T. Hieu, a social science teacher at Roberto Clemente High School. Dr. Hieu presented the topic for discussion, "Asians in the year 2000." Discussants on the panel were Asad Husain, professor of Political Science; Andy Chen, professor of Accounting, Business Law and Finance; and Moses Myung, Coordinator of the Asian Experience Seminar.

An active member of the Asian community, Hieu, has been interviewed by CBS, NBC, ABC, and PBS. He is the author of three books and received the 1983 President's Volunteer Action Award from President Reagan. Hieu's presentation focused on Teaching about Vietnam and Vietnamese Culture. According to Hieu there are approximately 7,000 Vietnamese children living in the Chicago area.

"Beyond the numbers, the critical issue for us in Chicago is that these Vietnamese children and their families have come to America, largely in the past two decades, from a culture significantly different from contempo-

rary American culture," warns Hieu.

Hieu believes that finding ways to help these students acclimate and adjust to American schools requires educators to examine the cross-cultural differences between Vietnam and the U.S.

The movies and discussions provide a vast wealth of information about Asia and its people. Dean of Academic Development Murrell J. Duster states, "Understanding and appreciating the influence of Asian culture in rich traditions, arts, and crafts facilitates the acquisition of knowledge and attitudes that are critical in a global society."

The Chinese Student Club, the Korean American Student Association, and the Indo-Pak Student Club sponsored the three food fairs held in Village Square. Taste of China, Taste of Korea, and Taste of India offered authentic cuisine from each country. Students, faculty, and staff were invited to sample the homemade delicacies.

On the last day of Asian Heritage Week performances were held in the Auditorium. Members of the Indian Student club performed traditional dances. The First Korean United Methodist Church

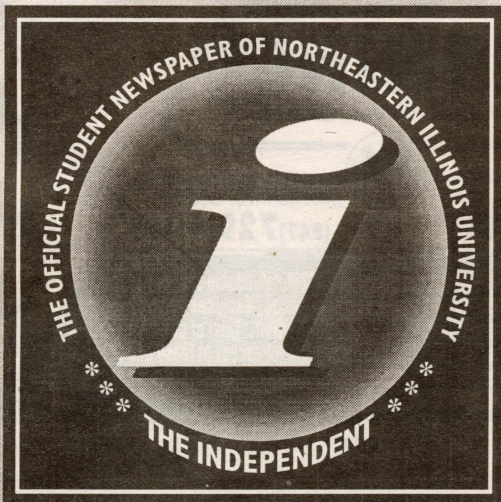
Choir, Patti Adachi and The Maiko Drummers, and members of Sung's Tae Kwon Do Academy performed for the audience. The Korean American Cultural Work and Play organization performed a Korean traditional cultural wedding.

Awards of recognition were presented to NEIU professors and members of the Asian community for their outstanding efforts, including their participation in Asian Heritage Week.

"Asian Heritage week provides the university community with an opportunity to increase its awareness and to further enhance foundational principles for life-long learning," remarked Duster.

The events of Asian Heritage Week provided an opportunity to learn from and understand the dynamics of Asian cultures.

"Our students, faculty and staff of Asian heritage form a foundation for cultural and commercial partnerships that will build additional opportunities for NEIU and the peoples of the Pacific community," comments President Steinberg. "We seek to build on our relationships and are confident that the Asian-American community will continue to assist in this endeavor."



Applications for *The Independent*

Editor-in-Chief & Business Manager

are now being accepted for the 96/97 school year

Candidates are asked to compile an application including:

1. Relevant experience for the position
2. Their goals for *The Independent* for the following year
3. A letter of recommendation

Job descriptions and applications are available in the Student Activities Office, E-221, above Becks Bookstore.

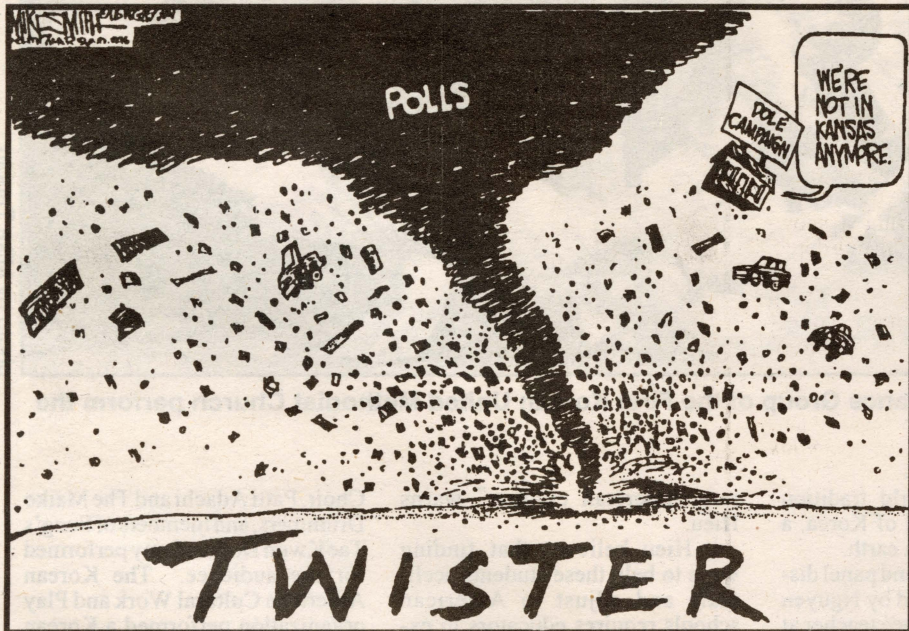
Deadline for applications is Tuesday, June 11, 1996

EAGLE'S FORUM

Amendment I

Congress shall make no law respecting an establishment of religion, or prohibiting the free exercise thereof; or abridging the freedom of speech, or of the press; or the right of the people peaceably to assemble, and to petition the Government for a redress of grievances.

Another Perspective



Back on the campaign trail, the intelligent discussion of the issues continues...



Letter to the Editor

Let's be dignified

I recently attended the 1996 Commencement Convocation on May 19. As a member of the Graduate College and the Class of 1996, I was disappointed in the rude behavior of some of my fellow classmates and members of the audience.

There were graduates talking loudly to each other, standing on chairs, and shouting to members of the audience during the ceremony. The behavior of these few individuals made our whole class, and NEIU, look bad. Furthermore, the audience would not remain silent long enough to hear any of the speakers' re-

marks.

Sure, there's nothing wrong with "blowing off some steam" or expressing the happiness we and our families find in our accomplishments. All the graduates worked hard and made tremendous sacrifices to receive an education, and our families have supported us every step of the way; however, let's be dignified in our celebration.

President Steinberg addressed us as educated people, so let's act like it and make ourselves, our families, and our school proud.

Melissa Strauss
Class of 96

NO MONEY DOWN

Jennings VW Offers Special Financing And Leasing Programs To Qualified Students And Soon To Be Graduates

OVER 50 GOLFS IN STOCK FOR IMMEDIATE DELIVERY

LEASE \$187 PER MO.* FOR ONLY 48 months!

BRAND NEW '96 VW GOLF GL SEDAN

Fully equipped '96 with air conditioning, AM/FM cass., power locks, rear defroster, alarm, dual air bags, and much more! #4778.

OVER 100 JETTAS IN STOCK FOR IMMEDIATE DELIVERY

LEASE \$199 PER MO.* FOR ONLY 48 months!

BRAND NEW '96 VW JETTA GL SEDAN

Fully equipped '96 with air cond., AM/FM cass., power locks, rear defroster, alarm, dual air bags and much more! #4917.

NO CHARGE SCHEDULED MAINTENANCE for 2 YEARS or 24,000 MILES

available on new '95 & '96 models. See Owners Manual For Details.

NO CO-SIGNER REQUIRED

See dealer for qualifying details.

10 YEARS/100,000 MILES WARRANTY COVERAGE

The Industry's BEST! available on new '95 & '96 models. See Owners Manual For Details.

LARGEST SELECTION OF USED VW'S TOO!

JENNINGS VOLKSWAGEN

201 WAUKEGAN ROAD (JUST NORTH OF GOLF RD.)
GLENVIEW CALL (847) 729-1000

*Closed end lease with approved credit. 1st payment, \$200 refundable sec. deposit, \$1000 down payment and \$450 VW acquisition fee due at inception. Excludes tax, title, lic. & \$40 doc. fee. Purchase option at lease end of \$8971/Jetta, \$8453/Golf. Total of payments equals \$6660/Jetta, \$6084/Golf. 30,000 miles included. Lessee responsible for excess at lease end at \$.10 per mile. Lessee responsible for maintenance, insurance, excess use and/or damage. Penalty for early termination. See dealer for details. Subject to prior sale.

The student newspaper of Northeastern Illinois University is published every two weeks except during finals and semester breaks. Letters to the editor must be signed, clearly typed or written and no more than 200 words. The Independent reserves the right to edit or omit any letters received. Deadline is one (1) week prior to the issue in which a contribution is to appear.



"Let the Truth Be Known!"

<p>Editorial Board</p> <p>Editor-in-Chief Kimberly A. Dudash Associate Editor Mike Buino Layout Editor Mary Jo Prusko Business Manager John Prusko, Jr. Entertainment Editor David Grzelak Sports Editor Michael Ryan</p> <p>Telephone & FAX Numbers</p> <p>Ph-312-794-3812 (FAX) 794-6243 Editor Ph-312-794-2812 (FAX) 794-6205 Advertising Ph-312-794-3811 (FAX) 794-6243 Staff Writers</p>	<p>Faculty Advisor Professor Tim Scherman</p> <p>Media Consultant Michael Wilson</p> <p>Staff Writers</p> <p>David Chun Shana Stone Toly Walker Dawn Janke Melissa M. Strauss Yvonne Lee Courtney Viamille</p> <p>Staff Photographers</p> <p>Mimi Davis Alberty Waldo</p> <p>Office Hours Monday-Friday 9:00A - 4:30P</p>	<p>Mailing Address</p> <p>The Independent, Room E-049 Northeastern Illinois University 5500 North St. Louis Avenue Chicago, IL 60625 e-mail: uindep@neiu.edu</p>
--	--	---

ARTS & ENTERTAINMENT

Murder and mystery abound on NEIU's Stage Center

BY MELISSA M. STRAUSS
STAFF WRITER

The NEIU Stage Center Theater's Summer Stock Company is scheduled to present three plays this summer: George M. Cohan's "Seven Keys to Baldpate," Mary Roberts Rinehart's "The Bat," and Agatha Christie's "The Mousetrap." The plays, all mysteries, are a delightful combination of farce, mystery, comedy, and melodrama.

Speech and Performing Arts professor, Dr. Richard Hesler, indicated that this series of plays offers up "light fare" for summer entertainment as opposed to the more educational and challenging productions that are presented dur-

ing the Fall and Spring semesters. The summer stock company combines a mixture of stage veterans and fresh talent. Hesler is pleased the theatre students will have the opportunity to work with professional actors.

The season begins in June with "Seven Keys to Baldpate," a comic melodrama directed by Hesler. The stage is set for bribery, corruption, and, perhaps, even murder when a writer retreats to a summer resort in mid-winter on a bet that he can complete the manuscript in 24 hours. "Seven Keys to Baldpate" runs June 13-15, 20-22, and 27-29.

"The Bat," a comic-mystery with a twist, is directed by Speech and Performing Arts professor, Dr. Rodney Higginbotham. An elderly woman rents a house belong-

ing to a banker who is reported to be dead, but his bank is short of cash and frightening things begin happening around the house. Is it the diabolical underworld criminal "The Bat" who is responsible? "The Bat" runs July 11-13, 18-20, and 25-27.

Hesler directs the third show of the season "The Mousetrap." A group of strangers is stranded in a boarding house during a snowstorm. One of them is murdered, but who is the killer?

All shows start at 7:30 p.m. during summer theater. Admission is \$8 for adults, \$6 for senior citizens and students, and \$4 for children 6-12. Group and subscription rates are available by calling the NEIU Stage Center box office at (312) 794-6652.



Jeff Willgale stars in "Seven Keys to Baldpate." "Seven Keys to Baldpate" will be playing June 13-15, 20-22, and 27-29. For tickets and information call the NEIU Stage Center box office at (312) 794-6652

MTV3: 24-HOURS OF ...

BY DAVE GRZELAK
ENTERTAINMENT EDITOR

According to a recent story in *Billboard*, there has been speculation that MTV is thinking about putting out a second station (MTV2) programmed with music 24 hours a day, 7 days a week. I say, why stop there? MTV3 could be used as a development channel for fine programming such as...

The Real Real World: Six college students are forced to live in a \$600 a month studio while working minimum wage jobs and receiving no financial

aid.

Glandblast: In combining *Singled Out* and *Sandblast*, college frat boys run through an Army obstacle course only to have the survivor, er, winner rejected for a date.

The Grinder: Morning commuters dance for their double latte.

Toad Rules: Five Gen-Xer's drive around the country in a 1973 Chevy Nova (with no air conditioning) and try to get people high by having them lick a toad.

Rock'em Sock'em Boxing Challenge: Adding a retro name to the "Rock 'n Jock" concept, the games would be a

brawlfest between stars of then and now. Personally, I think Farrah Fawcett could kick Jenny McCarthy's ass.

Beavis and Butthead: The only rerun on the station would be a rebroadcast of the 1996 presidential debate.

The Week In Oddities: Kurt Loder reports that no rock star is on trial.

120 Minutes with "Weird Al" Yankovic: The possibilities are frightening.

Of course, there is the possibility for each of the video jocks to have their own stations to contain each of their massive egos. That's programming.

YOU WILL BELIEVE

DENNIS QUAID DAVID THEWLIS SEAN CONNERY AS DRACO

DRAGONHEART

UNIVERSAL PICTURES PRESENTS A RAFFAELLA DE LAURENTIIS PRODUCTION A ROB COHEN FILM DENNIS QUAID
"DRAGONHEART" DAVID THEWLIS PETE POSTLETHWAITE DINA MEYER WITH JULIE CHRISTIE AND SEAN CONNERY AS DRACO COSTUME DESIGNER RANDY EDELMAN
SPECIAL VISUAL EFFECTS AND ANIMATIONS BY INDUSTRIAL LIGHT & MAGIC COSTUME DESIGNER HESTER HARGRETT MAKEUP DESIGNER DAVID ROTMAN PATRICK READ JOHNSON
PRODUCTION DESIGNER PATRICK READ JOHNSON & CHARLES EDWARD POGUE SCREENPLAY BY CHARLES EDWARD POGUE
DIRECTOR OF PHOTOGRAPHY CHARLES EDWARD POGUE EXECUTIVE PRODUCERS RAFFAELLA DE LAURENTIIS PRODUCED BY ROB COHEN A UNIVERSAL RELEASE
Universal Pictures online at <http://www.mca.com>
MAY 31ST

C H A R L I E S H E E N

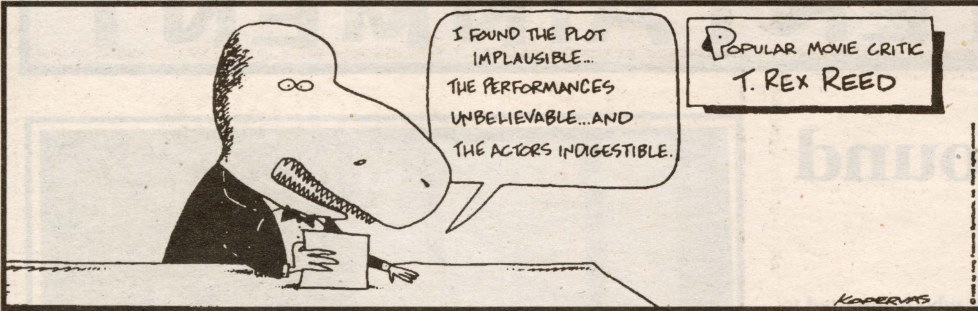
The greatest danger
facing our world
has been the planet's
best kept secret...
until now.

T H E A R R I V A L

Opening May 31st

LIVE ENTERTAINMENT PRESENTS A STEELWORK FILMS AND THOMAS G. SMITH PRODUCTION A FILM BY DAVID TWIBY
CHARLIE SHEEN "THE ARRIVAL" LINDSAY ERHOUSE TEO PULDO AND RYAN SIVER Music Composed by ARTHUR KEMPEL Digital Visual Effects & Animation by PACIFIC DATA IMAGES, INC.
Special Visual Effects Animation and Compositing by AVAILABLE LIGHT LTD. Edited by MARTIN HUNTER Director of Photography HIRSH NARIMA, A.S.C. Executive Producers TED FIELD and ROBERT W. COHN Co-Produced by CYRUS YAVNER
Produced by THOMAS G. SMITH and JIM STEELE Written and Directed by DAVID TWIBY
<http://www.thearrival.com> © 1996 LIVE Film and MediaWorks Inc. All rights reserved. ORION PICTURES PRESENTS

OUT ON A LIMB
BY GARY KOPERVAS



THE SPATS
BY JEFF PICKERING



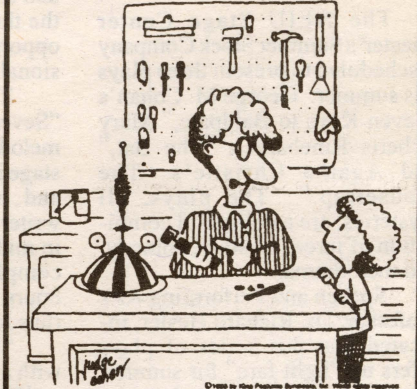
GEROGE
BY MARK SZORADY



Comedy Corner



"With an artful arrangement of paper clips, calenders and pens, you can look busy even if you aren't."



"And this, son, is a doohick-ey. It's the most useful tool in the shop."



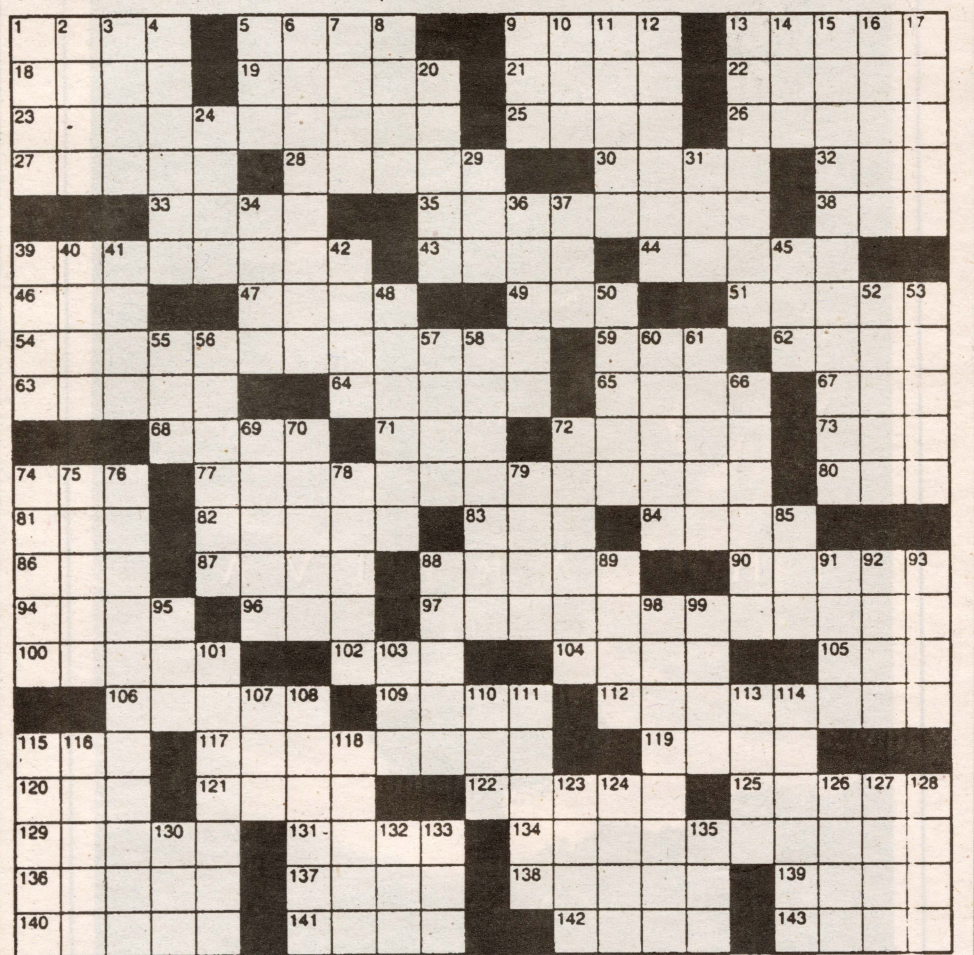
"I try to stay out of office politics."



"Wow!"

SUPER CROSSWORD

- | | | | | | |
|-----------------|------------------|--------------------|-------------------|------------------|--------------------|
| ACROSS | Thompson | 96 "A mouse!" | 142 "The Witches" | 40 Gets a | beginning |
| 1 Part of | 51 Wading bird | 97 Bath acces- | writer | galley going | 88 Scribes' tools |
| Indonesia | 54 Hit song for | sory | 143 Piece of | 41 "What's — | 89 Rock guitarist |
| 5 Certainty | the Platters, | 100 Fuss before | fencing? | for me?" | Lofgren |
| 9 Slender | 1958 | a mirror | DOWN | 42 Produces as | 91 Kind of pitcher |
| branch | 59 "My Name Is | 102 Diffident | 1 Smidgens | profit | 92 Bruce o' |
| 13 Sacred | Asher —" | 104 First name | 2 Came down | 45 Souffle | "Coming, |
| music | 62 Mexican | in scat | to earth | ingredient | Home" |
| 18 Ken or Lena | "monster" | 105 Prior to, to | 3 Depravity | 48 Rubbernecks | 93 Nautica |
| 19 Hood's | 63 — Park, Colo. | Prior | 4 Capital of | 50 On one's toes | adverb |
| handle | 64 "Cosmos" | 106 Lead singer | Turkey | 52 Mrs. Andrew | 95 CPR provider |
| 21 Portend | creator Carl | of the Police | 5 Remote | Johnson | 98 Careless |
| 22 Superior to | 65 Small | 109 Students at | 6 In spite of | 53 Started a | 99 Act like an ox |
| 23 Parade | business- | 43 Across | the fact that | Tea Party? | 101 Like capers |
| confetti, | man? | 112 Sweet wine | 7 Florentine | 55 Bandleader | 103 Shorten a midi |
| at times | 67 Rig a race | 115 Fitting | farewell | Brown | 107 Greek |
| 25 Cassandra | 68 Hens and | 117 Morass | 8 Reveille's | 56 Beauty/ | consonants |
| or Merin | pens | 119 Horner's fruit | opposite | Hoffman film | 108 Piston |
| 26 Dud | 71 "Baloney!" | 120 "Ben-" | 9 Recipe amt. | 57 Lab assistant | packing |
| 27 Iron setting | 72 Musical of | 121 "Back in | 10 Affliction | of note | 110 April initials |
| 28 Car-wash | 1919 | the —" | 11 Perfect | 58 "The Odd | 111 Acts the usher |
| supplies | 73 Lion's tail? | 122 Bar food? | 12 Little pet | Couple" | 113 "Swan Lake" |
| 30 Border on | 74 Came by | 125 Electrical | 13 Little pet | actor | skirt |
| 32 Ring stat | 77 Minor | inventor | 14 UK honor | 60 Put into | 114 Materialize |
| 33 Puerto — | explosion? | 129 "All My | 15 Seaver's | action | 115 Leading |
| 35 Writer's | 80 Scoundrel | Children" role | sobriquet | 61 Setting | 116 Prize money |
| nemesis | 81 Capek play | 131 Philosopher | 16 Draw forth | 66 Building | 118 Feed or |
| 38 Ending for | 82 Sign of | Immanuel | 17 Operatic | base | fescue |
| "auction" | spring? | 134 Singer born | hero, often | 69 Causing | 123 Was inexact, |
| 39 Test | 83 Presidential | Anna Mae | 20 Disreputable | goose bumps | on purpose |
| 43 Noah | monogram | Bullock | 24 Artist Nolde | 70 Smack, in | 124 Novels: |
| Webster's | 84 Rock hound? | 136 "The Addams | 29 Cousteau's | Scriptures | Sewell |
| alma mater | 86 "One Day — | Family" actor | milieu | 72 Entry point | 126 Small cut |
| 44 Surgeons' | Time" | 137 Old Testa- | 31 Merkel or | 74 Get the | 127 — majesty |
| new tool | 87 Actress Gam | ment book | O'Connor | picture | 128 Commedia |
| 46 Time to | 88 Real bad | 138 Austen title | 34 Bluff | 75 Peripheral | dell — |
| evolve? | dude | start | 36 Green | 76 Country star | 130 Spy org |
| 47 Makes | 90 "I — | 139 Essence | Mountain | 78 "Twin —" | 132 New Deal |
| better | vacation!" | 140 Coup — | Boys leader | 79 64 Across' | agcy. |
| 49 Actress | 94 Gaffer | 141 Unite, with | 37 Singer Joey | field: abbr. | 133 Flat hat |
| | Ballesteros | "up" | 39 French bean? | 85 Classic | 135 — Aviv |



A part-time job.
A full class schedule.
A full social calendar.

Where did he find time for \$9.00 an hour?

It's easy with RPS. We realize people have lives outside their jobs. That's what makes us such a logical choice for part-time work. You already have enough things to worry about, so finding an accommodating job shouldn't be one of them. RPS has opportunities available for:

Package Handlers

We offer an outstanding starting pay - \$9.00-\$9.50/hour with 50¢ an hour for tuition added after 30 days. In addition, we have shifts available from early morning to late night to accommodate your already busy schedule. And you'll work Monday through Friday, so your weekends will be free.

If this sounds like your kind of job, we'd like to hear from you. That is, if you can find the time! For consideration, please apply in person or call: **RPS, Inc., 2945 Shermer Rd., Northbrook, IL 60062, (847)272-4310.** RPS, Inc. is an equal opportunity employer.

RPS
A Caliber System Company

Have A Great Summer

CLASSIFIEDS

Services

CALL THE SCHOLARSHIP INFOLINE. 1-900-285-5050 ext. 665. \$2.00 per min. Avg. call 3 mins. Avg. cost \$6.00/ Maximum cost \$8.00. Touchtone phone req under 18 get parent's permission. Cust., Serv., Strauss Comm., Carmel, CA (408) 625-1910

INTERNATIONAL STUDENTS-VISITORS. DV-1 Greencard program available. Telephone 1-800-660-7167 or (818-772-7168. #20231 Stagg Ct. Canoga Park, CA 91306

EXPERIENCED VOICE TEACHER expanding studio. Background-10 year NY performing experience. BFA, MA-piano and voice. Free introductory lesson. (312) 989-1192

EARN \$500 OR MORE WEEKLY stuffing envelopes at home. Send long SASE to :Country Living Shoppers, Department V31, PO Box 1779, Denham Springs, LA 70727

ATTENTION ALL STUDENTS!! Grants & scholarships available! Billions of \$\$\$ in private funding. Qualify immediately. 1-800-AID-2-HELP (1 800 243-2435).

Employment

\$1750 WEEKLY possible mailing our circulars. For info call 301-306-1207.

BE A PART OF THE SOLUTION. Dynamic environmentally conscious company seeks positive people to train for key positions. Attitude more important than resume. Call (312) 545-1221.

PROFESSOR NEEDS DEPENDABLE person for light maintenance/yardwork at Skokie/Evanston 2 flat, part-time, flex hrs. Call ext. 2899 or 847-328-1669.

AS A SUBSIDIARY of the Traveler's Corp., The Copeland Companies, personal retirement planning specialists are seeking articulate, sales oriented individuals to be part of a team that provides employer sponsored tax-deferred income plans. For interview, please call or send resume to: Copeland Companies, 321 N Clark St., #940, Chicago, IL 60610, 312-836-0333. (EOE).

THE GATHERING

<http://www.takeme.com> scholarships, academic & career resources, internships, sports, news, entertainment, travel, music, debates and 1,000's of links.

ANSWERS TO APRIL 23 PUZZLE

BRAWL	ERASE	MEEK	VITA
IONIA	BAGEL	IDLE	IRON
DONTOG	BREAKING	MYHEART	
TOTEM	EEL	RUE	ANNIE
RIG	EKE	BARN	
OFF	TAKEA	LETTER	MARIA
PROUD	PLACID	ALMS	EST
ENAMEL	UGH	ALLY	CIAO
COMES	SOFTLY	TOME	VEGAN
STY	PRIZE	RAY	SCIENCE
EARLY	LIT	PARES	
SPANTEL	NIP	RESET	ACE
LABOR	GIVEMETH	ENTIGHT	
ITAL	GAOL	ATE	PIARROT
NIB	BULB	SALARY	MEESE
GOAWAY	LITTLE	LEGIRL	DEE
ALSO	HO	SEW	
EVERS	JAW	OPE	SILLSIE
DOTRATTOME	ONEMORE	RETIME	
ATNO	VANE	LAKME	LEVIN
MEAL	AXIS	ANEAR	DWELT

Summer Jobs

Set your own schedule, Mon.-Fri. Business to business telemarketing. Chamber of Commerce products and service sales. No cold calling. Communication, organizational skills and motivation to succeed required. Professional and encouraging atmosphere, base, commission, and bonuses. Leave verbal resume. 312-509-6859.

Entertainment

CLOWNING AROUND

THE ULTIMATE IN ENTERTAINMENT

Magic, juggling, face painting, balloon animals, interactive dance, & participatory games.

Call Dweedle !!
(847) 679-7189

LOSE 20 POUNDS IN TWO WEEKS

Famous U.S. Women's Alpine Ski Team Diet

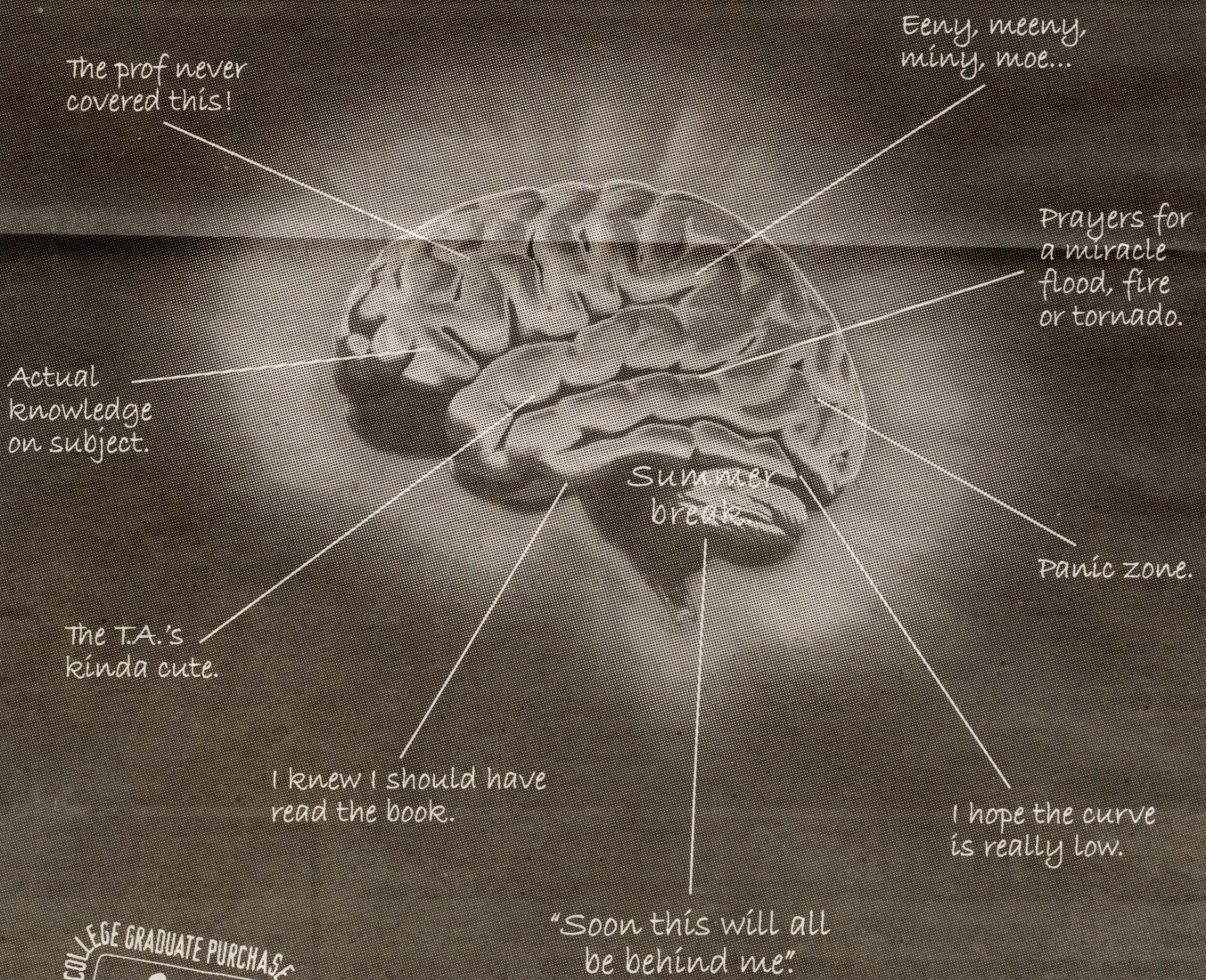
During the non-snow off-season the U.S. Women's Alpine Ski Team members used the "Ski Team" diet to lose 20 pounds in two weeks. That's right - 20 pounds in 14 days! The basis of the diet is chemical food action and was devised by a famous Colorado physician especially for the U.S. Ski Team. Normal energy is maintained (very important!) while reducing. You keep "full" - no starvation - because the diet is designed that way. It's a diet that is easy to follow whether you work, travel or stay at home.

This is, honestly, a fantastically successful diet. If it weren't, the U.S. Women's Alpine Ski Team wouldn't be permitted to use it! Right? So, give yourself the same break the U.S. Ski Team gets. Lose weight the scientific, proven way. Even if you've tried all the other diets, you owe it to yourself to try the U.S. Women's Alpine Ski Team Diet. That is, if you really do want to lose 20 pounds in two weeks. Order today! Tear this out as a reminder.

Send only \$8.95 (\$9.60 in Calif.)-add .50 cents RUSH service to: American Institute, 721 E. Main Street, Dept. 254, Santa Maria, CA 93454-4507. Don't order unless you expect to lost 20 pounds in two weeks! Because that's what the Ski Team Diet will do.

©1995

THE STUDENT MIND DURING A FINAL EXAM.



COLLEGE GRADUATE PURCHASE PROGRAM
GET \$400
TOWARD FORD & MERCURY WHEELS
SENIORS, GRADS AND GRAD STUDENTS



Here's fast-acting relief from the pressure of school! Graduating seniors and grad students can get \$400⁰⁰ cash back* on the purchase or lease of any

cool new Ford or Mercury. This includes the high-performance Mustang! Call 1-800-321-1536 or visit our web site at <http://www.ford.com> for the full story.



BECAUSE YOUR BRAIN DOESN'T HAVE WHEELS.

* To be eligible, you must graduate with an associate's or bachelor's degree, or be currently enrolled in graduate school, between 10/1/94 and 1/3/97. You must purchase or lease your new vehicle between 1/4/96 and 1/3/97. Some customer and vehicle eligibility restrictions apply. See your dealer for details.

