

1-25-1983

## Print - Jan. 25, 1983

Sandra Vahl

Follow this and additional works at: <https://neiudc.neiu.edu/print>

---

### Recommended Citation

Vahl, Sandra, "Print - Jan. 25, 1983" (1983). *Print (1968-1987)*. 512.  
<https://neiudc.neiu.edu/print/512>

This Newspaper is brought to you for free and open access by the NEIU Student Newspapers at NEIU Digital Commons. It has been accepted for inclusion in Print (1968-1987) by an authorized administrator of NEIU Digital Commons. For more information, please contact [neiudc@neiu.edu](mailto:neiudc@neiu.edu).



INSIDE:

## A History of the Parental Buildings



# Northeastern Illinois Print

Volume 3, Number 24

Northeastern Illinois University

Tuesday, January 25, 1983

### STATISTICS EXAM--FOR BUSINESS AND MANAGEMENT MAJORS

The Division of Business and Management will offer a statistics examination to students who have received a "C" or below in ECON 305 or equivalent course from another college or university.

Students are required to pass ECON or an equivalent course with a "B" or better--this is a prerequisite for declaring the Business and Management major.

A student who has not taken ECON 305 and wishes to declare his/her major may take the statistics exam. However, there is a quota on the number of students who will be tested. Students who have received a "C" or below grade and/or transfer students will be given priority.

**Students must sign up** with the Program Advisor, Linda Narozny, office 0028 or with the Administrative Assistant, Susan Zoltek, office 0041. Sample questions may be obtained from Linda Narozny or Susan Zoltek.

The 90 minute test will be given on the following dates:

January 27, Thursday, 1001, lecture hall, Classroom Building, from 12:30 until 3:00 p.m. (Enter from Lower Level only).

January 29, Saturday, 1002, lecture hall, Classroom Building, from 9:30 a.m. until 12:00 noon. The examinations will start promptly at 12:45 and 9:45 respectively. **No one will be admitted after the examination has started.**

NOTE: any student cancelling the Thursday exam will not be allowed into the Saturday testing.

Passing this exam is **NOT** a substitute for the 3 credit hour course, ECON 305 or ECON 310 requirement.

**STUDENTS MUST BRING WITH THEM AT LEAST 3 SHARPENED PENCILS, A PHOTO I.D. CARD, AND PROOF OF REGISTRATION AT NORTHEASTERN ILLINOIS UNIVERSITY.**

## Faculty react to cuts

by Richard Vega  
and Joe Wright

Recently the faculty union has been asked by the Board of Governors to make concessions in their contract because of further anticipated funding cuts this fiscal year.

On orders from Governor James R. Thompson, the Board of Governors made \$2.28 million in cuts throughout the University system and is anticipating further cuts if the state's economy continues in a recession.

So far, the Board has limited spending and has postponed a 3 percent pay increase scheduled this month for administrative and professional employees.

The faculty union has negotiated an agreement to discuss a possible pay-cut of up to two days pay if the anticipated cuts are instituted.

However, the withholding of two days pay from faculty employees is not automatic; it requires

negotiating with the faculty union and University Professionals of Illinois on across-the-board general budget cuts. The pay time cut may be set as one day, a half a day or any part of a day.

According to Richard Higgenbotham, President of Northeastern's Chapter of the U.P.I., the sacrifices made by the faculty should be at least equal, if not less

than, any administrative sacrifices.

Additionally, the American Federation, State, County, and Municipal Employees and the Illinois Federation of teachers have filed a joint suit against Governor Thompson. They contend that the State constitution doesn't allow the legislature to delegate powers to the Governor, despite their approval of such actions.

### Students dance for \$5,000

Junior Shari Weinstein and her partner Jeff Knutsen appeared on "Dance Fever," Saturday, January 22. The couple were the winners of the \$1,000 preliminary show and advanced to the \$5,000 semi-final show which will air Saturday, January 29, at 6:30 p.m. on channel 2.

**REMEMBER  
VOTE FOR YOUR CANDIDATES  
TODAY & TOMORROW  
in the Village Square  
9 a.m. to 9 p.m.**

## Snow closing plan set for U.N.I.

by Robert Williams

Northeastern's Snow Closure Plan is in effect until winter conditions subside. In case of a heavy overnight snowfall, the University Relations Department advises students to listen to radio or television stations for a bulletin announcing that UNI will be closed.

The Relations Department stresses not to call the University since its telephone system is only capable of handling ten callers at a time, and with 11,000 students, most likely the lines will be constantly busy.

If there are blizzard conditions during school hours,

there will be an announcement over the intercom advising students that they should leave, as the campus will be closed.

Students, faculty and staff members who have cars in the parking lots should remove them at once. All autos left in deep snow become obstacles for snowplows and thus will be towed away and the owner fined (\$40-50).

Side streets requiring zone 1, 2 or 3 parking stickers will be cleared by the City's Streets and Sanitation Department. Residents who normally

park their cars on these streets will be allowed to park free of charge in Northeastern's parking lot from 10:00 p.m. to 7:00

a.m. so that the streets may be cleared.

When Northeastern is closed for the day, all doors will be locked.

Richard Katschke, Director of University Relations, advises in closing "If you think the weather's crummy, listen to the radio."

## Massive blood drive planned

On Monday, February 7, Health Service is sponsoring what may be the biggest (and therefore BEST) Blood Drive in UNI history. (1983 is the ninth year that blood drives have been conducted at UNI.)

All previous blood drives have been done using 6 or 9 donor cots and netted 90-120 units of blood. "This time," says Marion Etten, Director, Health Service, "we will have 12 cots and aim for 150 units of blood. This means we will have to sign up about 200 persons, because a certain percent-

tage are always excused due to colds, flu, anemia, etc."

It is estimated that Chicago blood banks must get 50,000 to 100,000 pints of blood annually from outside the metropolitan area to meet local needs of about 350,000 pints each year.

Since so many victims of auto accidents are young people, it seems logical that a college campus of nearly 10,000 students can help supply that need.

To donate, call or go to

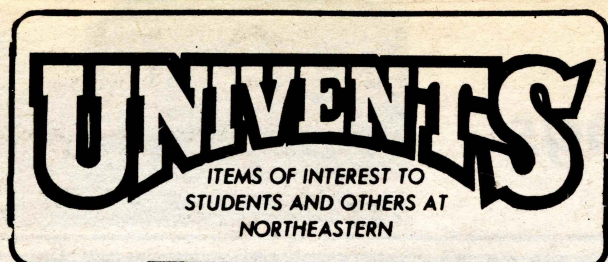
Health Service and reserve a time of day convenient for you to give blood on February 7. (Call ext. 354) First-time donors are given "special handling," says Etten, "because we want to answer all their questions; allay any fears; explain procedures before, during and after. Once a first time donor has achieved a donation, they often become donors for life." Several employees and teachers have donated 40-50 and 60 times. It's a wonderful health habit. Try it! You'll like it!

WIND-(560 AM)  
WMAQ-(670 AM)  
WGN-(720 AM)  
WBBM-(780 AM)  
WLS-(890 AM)  
WCFL-(1000 AM)  
WJJD-(1160 AM)  
WEDC-(1240 AM)  
WVON-(1390 AM)

WBEZ-(91.5 FM)  
WXRT-(93.1 FM)  
WLS-(94.7 FM)  
WMET-(95.5 FM)  
WLUP-(97.9 FM)  
WCLR-(101.9 FM)  
WBMX-(102.7 FM)  
WFYR-(103.5 FM)  
WYEN-(107 FM)

WGCI-(107.5 FM)  
UNI's WZRD-(88.3 FM)  
WGN-TV (Channel 9)  
WLS-TV (Channel 7)  
WBBM-TV (Channel 2)  
WMAQ-TV (Channel 5)  
WFLD-TV (Channel 32)  
WCIU-TV (Channel 26)





### Mini-U to begin in Feb.

Northeastern Illinois University's "Mini-U" winter semester begins the first week in February.

Mini-U offers more than 52 low-cost, non-credit courses in these areas: business, investment, personal computers, publishing, work and career development, self-improvement, math, languages, literature, writing and aviation.

Mini-U courses range from one-day sessions to 12-week classes that meet weekly. Most courses fees range from \$20.00 to \$55.00.

To request a free copy of the Mini-U brochure of class listings, call Northeastern's Office of Field and Continuing Education at 583-4050, ext. 392.

### Chinese New Year Fest

The China Club will be holding a Chinese New Year Festival, Mon., Feb. 14, from 5-10 p.m. in Alumni Hall. There will be a punch and social hour; box dinner (\$3.50 each, containing egg roll, fried rice, sweet and sour pork, pepper steak, barbecued chicken, fried shrimps, chinese vegetables and transparent noodles); ethnic singing and dancing; martial art displays; prizes; a Kung Fu movie; and disco dancing. Everyone is welcome. Those ordering box dinners should contact Gloria before Feb. 11 in room S346A for reservations and payments.

### Tai-Chi offered

The Tai-Chi exercises start the first Wednesday of February, 1983 (Feb. 2) from 3:30 to 4:30 p.m. in Room S211.

They are to be held every Wednesday afterwards. Old and new members are welcome.

### Counselor Education Assoc.

The Counselor Education Student Association presents Ann Pardo, a member of the American Dance Therapy Association. Pardo will explain the history and development of dance-movement therapy and demonstrate its usefulness, Mon., Feb. 7 from 7:30-9:30 p.m. in CC217.

### Lecture: Africa Revisited

"Africa Revisited/Living in a very different Culture" will be the topic for Professor Wallace Dierickx of the Geography and Environmental Studies Dept. when he speaks to the Study/Travel Abroad Planning Class on Wed. Jan. 26 at 1:00 p.m. in 2081. Guests are welcome.

### Philosophical Society

"All my work has come about through a change in my earlier opinion of religion."

Luther Burbank

It is never too late to abandon your faith. All are welcome to witness and take part in the "Annihilation of Agnosticism" by philosopher Dr. Chacon Today at 8:00 p.m. in CC-214. Then come next Tuesday at 8:00 p.m. in CC-214 for "Is Faith Necessary For Mental Health?" by Dr. Lattie.

### Interp. set performance

Interpreters Theatre presents Paul Edwards, member of the faculty of Interpretation at Northwestern University, In Concert, performing from works by Twentieth century American authors; Tuesday, January 25 at 12:30, in the UNI StageCenter. Refreshments will be served at a reception following the performance.

### English Language Examination

Winter registration for the English Competency Exam is continuing in the Language Testing office (CLS 2-073). Registration is open for the March 8 testing only. Seniors anticipating April graduation who have not registered for the English Competency Exam should contact the Language Testing office immediately.

## New club formed -- Women in Communications

by Jeanne Dobosz

On January 27, UNI's chapter of Women in Communications will hold its first meeting. The meeting will be held in CLS 2081 and is open to all students (not just women) seeking a career in the communications field. Refreshments will be served and an introductory speech will be given by professional chapter president, Chris Rozakis of In Touch Communications.

Women in Communications, Inc. is an international professional organization of more than 9,500 members. It was founded in 1909 and is one of the United States' oldest communications organizations. WICI draws

members from newspapers, magazines, public relations, broadcasting, advertising, journalism education and many other areas of communications.

WICI is organized into three groups: professional chapters, campus chapters, and members-at-large. There are currently 80 chapters in cities across the country, 86 campus chapters, and several thousand individual student and professional members living in areas where there are no WICI chapters.

Membership in a chapter of WICI offers a unique opportunity to associate with persons in a wide variety of

communications fields. A campus chapter provides enrichment of professional training, leadership and management experience, valuable professional contracts and the opportunity to associate with peers on an informal, non-classroom level.

WICI offers a variety of professional programs and services, including management training and awards for professional and student excellence. A number of professional chapters provide scholarships and grants.

A job information service, available to members only, lists openings across the country. Most professional chapters in major cities maintain job registers. Both of these tools are available to members seeking information on employment opportunities.

At national, regional and local meetings, WICI offers programs designed to increase professional skills and heighten awareness of the challenges facing today's communicators. UNI chapter activities will include guest speakers from the communications field, tours of T.V. and radio stations, newspapers, and advertising and public relations firms, and participation in WICI's annual career conference.

## Blacks in White TV

by Rebecca Vega

J. Fred MacDonald, Ph.D., a member of Northeastern's faculty, has just written a novel entitled, "Blacks in white T.V.," which contains a detailed study of the early commercial decisions that affect the treatment and omission of black actors, as well as the black stereotypes, that permeate the industry. It primarily explains the constant bombardment of our minds with modern day "Toms," "picaninnies,"

"mammies" and "dim-witted coons" as role models for our children and our minds that inflicts the fatal paralysis of self-hatred.

MacDonald has also appeared on three national talk shows, including Tony Brown's Journal. His novel will be published in the middle of January and will be sold at local book stores, including the Book Nook. He also wrote *Don't Touch That Dial*, which corresponds with the history of radio programs from the 1920s through the 60s.

A 3 line message is only . . . 60¢  
Additional lines . . . 15¢  
If you ad is less than 3 lines, the cost is 20¢ per line.

## SEND YOUR LOVE IN A "PRINT" PERSONAL

John Doe,  
I love you.

Jane Doe  
3 Lines 60¢

Denise Price

Without you, my world  
would be empty. You are  
my one and only love.  
Happy Valentine's Day.

Denise Price  
6 lines \$1.05

Dennis

Hugs and Kisses from the  
one who loves you. My  
heart beats only for you.  
All of my eternal love.

*I Love You*

Denise

9 lines \$1.65

Ron K.

Although we're apart  
too often, you are still my  
only true love. Remember  
the day in the parking lot  
near the library? I always  
will.

Love,

The woman of C.C.C.  
7 lines \$1.20



*Be Mine*

*I Love You*

*Be My Valentine*

Art elements are only an additional . . . 50¢ or 60¢.

Place your ad by stopping in room E-049, the PRINT office or calling 583-4050, ext. 509.

Ask for Carole

You could win a FREE dozen roses! Your ad makes you eligible to win--at no extra cost!

1. One entry with each purchase of a Print Personal Valentine Ad.
2. No limit on purchases of Print Personal Valentine Ads.
3. Print staff ineligible.
4. Public Drawing, by Walter Williams, Director of Student Activities, February 8, 1983, Room E-049 (Print Office) at 12:30 p.m. Winners need not be present.
5. All prizes must be redeemed by March 30, 1983, unless otherwise stated.
6. Award Certificates shall be picked up in the PRINT Office (Rm. E-049) by contest winners no later than 5:00 p.m. on February 11, 1983.
7. Winners will be posted on the PRINT bulletin Board outside Rm. E-049.



# Dems debate for Mayor

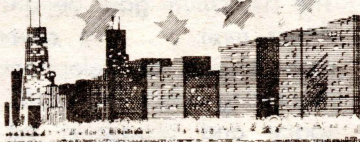
by Mark Johnson

On January 17, the mayoral candidates had their first of four debates before the mayoral election (February 22, 1983). The atmosphere was quiet and full of curiosity. Washington opened the debate by explaining why he would impose a 1 percent income-tax increase along with other measures, such as the Utility levy which would bring Chicago an estimated annual amount of \$111 million in additional revenue.

States Attorney Daley and Mayor Byrne strongly disputed the income tax increase. The question of taxes, or higher state income tax or possible taxes was the main focus of the debate.

Byrne disputed her opponents' estimates of tax increases, which ranged from \$500 million to \$1 billion during her term as mayor. She set the record straight, explaining that the actual

## CAMPAIGN '83



ON THE ROAD TO CITY HALL

figure was \$298.7 million and that such a large increase was in order to aid the Board of Education. Byrne constantly informed the panel and audience that the City of Chicago was in great financial danger.

One panel member asked Washington what alternative plan would be instituted if the legislature does not pass his 1 percent income tax increase. Washington said that he would go over the City budget line by line and cut out all large amounts of excess "fat."

Daley responded, saying that he saw no need for an increase in the state income tax, stating that new re-

venues for the city should come from the uniting of current city expenditures.

In a later question on taxes and city income, Daley charged that Byrne's administration had been dragging their feet to seek additional funding from the Legislature for city agencies.

Another panelist asked as to where new revenue could be found in Chicago. Both Byrne and Daley continued to argue against the idea of any new taxes. Washington drew laughter from the audience and moderator (Sun Times publisher, James Hoge) when he said that his opponents could "run from (the panelists') questions, but they can't hide."

"Since Byrne has been Mayor, unemployment has increased over 100%," said Washington. Washington repeated that Byrne "blundered" in her roles with the CTA and the Board of Education. Daley also attacked current Byrne budgets as well as past budgets.

## Candidates sponsor UNI table

Tables with volunteers for the Mayoral candidates encouraged Northeastern students who live in Chicago to vote, and those who are not registered, to do so. In fact, today, January 25, will be the last day that anyone can register for the city primary election, which will be on Feb. 22. The regular polling places will hold re-

gistration from 8:00 a.m. to 9:00 p.m. To find your precinct polling place, call the Board of Elections Commissioners.

Anyone 18 years or older, citizen, and a resident of the area for 30 days, can vote. In fact, volunteers Armando Gomez and George Velasquez are

encouraging more Latinos to go out and vote; to have their voice counted in the upcoming election. The table handed out fliers and encouraged all college students to get involved in the Mayoral campaign. For more information regarding any of the candidates, contact the Print at ext. 510 or stop into room E-049.

## The Guide

SAVE 10%  
Masks,  
Hug-A-Chum,  
Brass and  
more

MOM'S GIFT SHOP

3217 W. Bryn Mawr • 267-1545



Shafer - Florist

FLOWERS FOR ALL OCCASIONS  
BRYN MAWR - KIMBALL

10% Discount  
for all UNI  
students and  
faculty with ID

3358 WEST BRYN MAWR

PHONE: 478-6276



Help me...

And help each other.  
You and your  
neighbors can...

TAKE A BITE OUT OF  
CRIME

© 1979 The Advertising Council, Inc.

"Where knowledge ends,  
religion begins."  
-Disraeli

Find Out More

DIAL - AN - ATHEIST  
(312) 772-8822

GET A GOOD DEAL,  
PATRONIZE  
OUR ADVERTISERS!

## TOYOTA SERVICE

Made affordable by  
Chicago's #1  
independent & exclusive  
Toyota auto care center.

Complete Mechanical Service  
Call for our service brochure

UNI STUDENTS!  
We're just around the corner from  
campus. Drop your car off for service  
and we'll return you to campus.

Mention this ad and receive a free tire gauge  
when your car is serviced.



267-0304



CARLSON'S AUTOMOTIVE  
SERVICE  
3706 W. Montrose  
Chicago

**Certificate of Ownership**

THIS Certificate confers upon its holder, the right in nubibus to claim or own ownership of one common share of the Brooklyn Bridge with all the rights and privileges such claim or ownership entails, as set forth in the regulations of the Brooklyn Bridge Authority.

WITH THIS Certificate the holder is entitled to, as many toll-free trips across the Brooklyn Bridge as desired in both directions until such time as the toll is paid. This is the sum of the tolls for the holder of this Certificate. The holder of this Certificate is entitled to the same toll-free trips as the holder of any other Certificate. The holder of this Certificate is not entitled to the same toll-free trips as the holder of any other Certificate. The holder of this Certificate is not entitled to the same toll-free trips as the holder of any other Certificate.

The holder of this Certificate is entitled to the same toll-free trips as the holder of any other Certificate. The holder of this Certificate is not entitled to the same toll-free trips as the holder of any other Certificate. The holder of this Certificate is not entitled to the same toll-free trips as the holder of any other Certificate.

THIS Certificate is a limited registered share numbered 1882 and issued with the approval of the Brooklyn Bridge Authority.

*Ed E. Slicker*  
Ed E. Slicker, Esq.  
1882

I'm Sid E. Slicker, and I am pleased to offer for sale a limited edition of BROOKLYN BRIDGE CERTIFICATES OF OWNERSHIP!

Each 11" x 15" two color certificate grants the right *in nubibus* to one uncommon share of the Brooklyn Bridge with all the rights and privileges that entails.

Whether you are a college student or a corporate executive you cannot find a better investment for your humor portfolio than one of these signed, numbered, and registered certificates.

YES, Sid! I want to buy the Brooklyn Bridge! Send me \_\_\_\_\_ certificate(s). I have enclosed \$5.00 for each certificate (ppd.) for a total of \$\_\_\_\_\_. Mich. residents add applicable sales tax. Satisfaction guaranteed.

NAME \_\_\_\_\_

ADDRESS \_\_\_\_\_

CITY \_\_\_\_\_ STATE \_\_\_\_\_ ZIP \_\_\_\_\_

Send coupon or facsimile to:

**BROOKLYN BRIDGE**  
Commodities Exchange  
P.O. Box 1882  
Dearborn, MI 48121



## Info. Day set for getting government jobs

Northeastern's Career Services Office is sponsoring its 14th annual Information Day on Careers in Government, Tuesday, February 8 in the Commuter Center, room 217. Hours are 9:30-noon and 1:00-4:00 p.m. Representatives of public sector (government) agencies at the local, county, state, regional and national level will be there to acquaint students with the nature of work the agency does, type of training they like to hire and the process an interested UNI student would follow if seeking a job. Currently some agencies are hiring and others are in a "freeze" state. Since agencies do not advertise jobs the way businesses do, students must learn how to get on job registers so that they are contacted when job openings exist.

The purpose of the information day is to help students with career planning and the development of job contacts. Here is the opportunity to find out about future employment with a sampling of a variety of governmental agencies. Students can learn about requirements and entry level job titles. They can ask about co-op programs and summer programs. Over the years the employment picture keeps changing. Get information now so that you will be prepared for the future.

## Resume Workshops set

The Basics of Resume Writing to help you draft that necessary marketing tool--the resume--will be held during February on the following dates: Tuesday, February 1 at 5:40 to 6:55 and Thursday, February 17 at 12:30 to 1:50. "Critiquing sessions" are scheduled for Monday, February 21 at 5:40 to 6:55 (with resumes due Thursday, February 10) and Tuesday, February 22 again at 5:40 to 6:55 (with resumes due Wednesday, February 16.) Resumes are submitted ahead of the "critiquing sessions" so that transparencies can be prepared. All workshops are held in B-117.

The college Placement Council's video cassettes on "Interviewing" that no job seeking student can afford to miss are being shown in B-117 on Monday, February 7 at 5:40 to 6:55 (tape I) and Monday, February 14 at 5:40 to 6:55 (tape II & III). Tape I will again be shown on February 8 at 5:40 to 6:55 with tapes II & III scheduled for viewing on Tuesday, February 15 at 5:50 to 6:55. Study guides have been prepared for these interesting TV programs and question/discussion periods follow viewing the tapes. Additional dates are scheduled for March and April of Winter '83 trimester.

## Marketing Scholarships available

Thirty full-tuition scholarships to a five-day direct marketing Collegiate Institute in Chicago, Illinois, April 4-April 9, 1983 are now available to seniors majoring in advertising, marketing, journalism, communications and similar fields, it was announced today by the Direct Marketing Educational Foundation, Inc.

Successful applicants will get a practical introduction to basic direct marketing and direct mail techniques under the guidance of a dozen top practitioners in a fast-growing \$125-billion direct marketing industry. For example, the principles

of direct mail success, creativity, mailing lists, testing and other subjects will be covered at the Institute. The curriculum goes beyond direct mail . . . to cover such topics as telephone marketing cable TV, QUBE, space and broadcast advertising.

A panel of direct marketing executives selects Institute scholarship recipients based on: faculty recommendations; the student's academic standing; interest in advertising and marketing; and record of extracurricular school-related activities and employment. Scholarships cover all tuition fees, room

and board. Students are required to pay the first \$100 of transportation costs within the continental U.S.

Scholarship applications are available from professors or the Foundation (6 East 43rd Street, New York, NY 10017). Students attending schools located in Illinois, Indiana, Iowa, Ohio, Michigan, Minnesota, Missouri and Wisconsin should mail forms to: Ms. Ellen Steele, Allstate Insurance Company, Allstate Plaza D-4, Northbrook, IL 60062. They must be received together with a professor's recommendations form by February 23, 1983.

## Courses set for aviation tests

Northeastern Illinois University's "Mini-U" will offer three courses in aviation during its winter semester. All of the courses will prepare students for Federal Aviation Administration (FAA) written examinations and are taught by an FAA licensed pilot and ground instructor. Following is a brief description of each course:

"Instrument Pilot Rating" is scheduled for Mondays, January 31 to April 18, from 7:00 to 10:00 p.m. This course will cover federal aviation regulations, air traffic control, air navigation, meteorology, aircraft performance, aircraft instruments, weight and balance, instrument charts, flight planning and approach plates. Use of the **Airman's Information Manual** and the function of flight service stations will also be discussed. Tuition is

\$55.00.

"Private Pilot Rating" will be offered on Tuesdays, February 1 to April 19, from 7:00 to 10:00 p.m. This course will familiarize the student with specific types of aircraft and engines, federal aviation regulations, meteorology, air navigation and air traffic control. The **Airman's Information Manual** and maps will be studied. Tuition is \$55.00.

"Meteorology for Pilots" is scheduled for Wednesdays, February 2 to April 20, from 7:00 to 10:00 p.m. This course will concentrate on general circulation of the atmosphere, air masses and

fronts, thunderstorms, weather observations and the aviation weather system. Using and interpreting weather charts, aviation weather reports, forecasts and prognostic charts will also be covered. Tuition is \$55.00.

Students may register for courses in person or mail their check or money order to the Northeastern Illinois University Office of Field and Continuing Education, Room C-329, 5500 North St. Louis Avenue, Chicago 60625.

For additional information call Northeastern's Office of Field and Continuing Education at 583-4050, ext. 392.

**Who knows what the future holds? Watch us next week**

## Things to remember on your resume

by Rebecca Vega

What is a resume? It's a brief summary telling an employer what you can do, what you've done, what you know, who you are and what type of job you can do. A resume should have one page for each ten years of experience. Never submit a resume with an error on it, even if it is one error.

There are two basic types of resumes: functional and chronological. A functional resume briefly explains your job skills and a chronological explains work history and work titles. You may combine both functional and chronological resumes into a qualifications brief.

Five parts of a resume are:

**Heading:** Contains your name, address and phone number.

**Occupational objective (career goal):** Here you explain how far you want to go and what you would like

to do. Be realistic about your goal.

**Work History:** List jobs in a reverse chronological order.

**Educational History:** List 5-6 courses completed after graduation (for unexperienced students).

**Primary assets:** Personal characteristics,

special traits that would attract an employer to you.

Never include references on a resume because of people's dislikes and likes in others. Next to accompany your resume, you should have a cover letter which convinces the employer to read your resume. It should be no longer than three to

four paragraphs. The opening paragraph should be an attention-getter. You may want to start by a 'slanted' question. Second paragraph: it should elaborate on the first paragraph explaining your qualifications as stated in the resume. Finally, the closing paragraph: request an interview

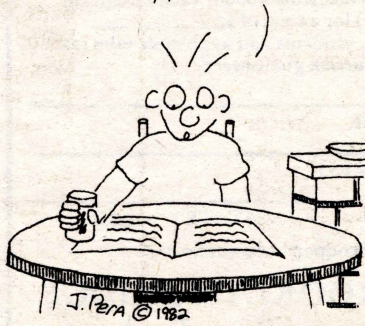
with the employer and suggest a date and time. Indicate that complete details are included in the resume or are available upon request. Always address the director of personnel by his or her name. Make sure your resume, as well as your letter, is short and precise.

### Pera-Scope

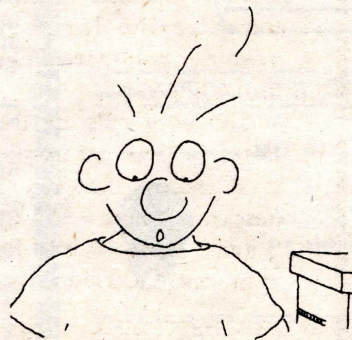
Here's a job I wouldn't mind trying in my spare time.)



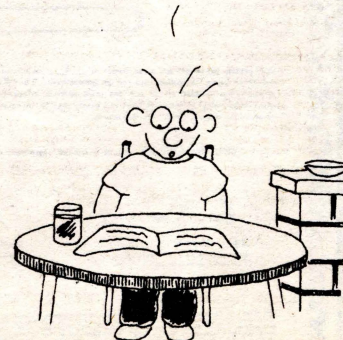
Handyman: Fix small Appliances.



Light evening hours. Earn - extra income.



B.A. Required. M.A. Preferred.







## LETTERS TO THE EDITOR

### Parking, a matter of justice

Dear Editor,

I must admit to being somewhat astonished to read the recent article concerning the issuance of free parking permits to neighborhood residents allowing them to use UNI's plowed parking lots overnight. In light of the neighborhood's harassment of Northeastern's faculty and student drivers and the present resident-only parking restrictions on nearby "public" streets, our open door policy seems awfully good-natured and less than an instance of mutual cooperation.

Might it not be possible to utilize our parking lots as a bargaining chip in an attempt to ease the daytime restrictions on street parking? If not, perhaps we can

highlight the ridiculousness of the present neighborhood response by mimicking their behavior. We can begin by prohibiting residents from acquiring parking stickers, and then when it snows, we can ask students and staff to bring their old kitchen chairs, refuse from their basements, and assorted crates and boxes in order to take out claims on our plowed parking spaces. (I've even seen a painting holding space once-not a very good painting, however.)

This winter we can look forward to fulfilling our urban mission by mirroring our neighborhood community and holding a theatre of the absurd in our parking lot.

John Hoeppel

### Candidate introduces self

Dear Student,

I am glad to have the opportunity to be running for President in the Senate Officers Election on January

25 and 26. I am pleased to endorse the following candidates: Steve West for Vice-President, Sam Peress for Treasurer, and David Doehler for Secretary. I know their qualifications, past achievements, and future potential.

Those elected to Senate Office positions will be your representatives for the next year in all scholastic functions and activities. The task of an officer requires a sincere concern for the protection of student interests in all capacities of the university. The above named individuals can more than amply meet that task.

The vital role of Senate Officer deserves your attention. Please vote on Tuesday, January 25 or Wednesday, January 26 in the Village Square between the hours of 9:00 a.m. and 9:00 p.m.

Thank you,

Mary Connelly

Candidate for Student Senate President

PREPARE FOR:

**MCAT • SAT • LSAT • GMAT • GRE**

**INTRO. TO LAW SCHOOL**

**GRE PSYCH • GRE BIO • OCAT**

**VAT • MAT • SSAT • PSAT**

**DAT • ACHIEVEMENTS • ACT**

**TOEFL • MSKP • NMB I, II, III**

**ECFMS • FLEX • VQE • RN BDS**

**NDB I, II • NPB I • ESL**

**CPA • SPEED READING**

Flexible Programs & Hours

Visit Any Center And See For Yourself Why We Make The Difference

Speed Reading Course Features

Free Demo Lesson

Call For Days & Times

**ARLINGTON HEIGHTS CENTRE**  
8008 S. ARLINGTON HEIGHTS ROAD  
ARLINGTON HEIGHTS, IL 60005  
**(312) 437-8850**

**CHICAGO CENTRE**  
8815 N. CLARK ST.  
CHICAGO, IL 60630  
**(312) 784-5151**

**HIGHLAND PARK CENTRE**  
674 CENTRAL AVENUE  
HIGHLAND PARK, IL 60038  
**(312) 433-7410**

**LA GRANGE CENTRE**  
19 S. LA GRANGE  
LA GRANGE, IL 60525  
**(312) 352-5840**

**SPRING, SUMMER, FALL, INTENSIVE**

**Classes Starting**

**THIS MONTH      NEXT MONTH**

GMAT...4WK/LSAT...      4WK/GMAT...GRE...

SAT...SPEED READING      ACT...MCAT...DAT...

Courses Constantly Updated

Outside NY State Only CALL TOLL FREE 800-223-1782

Centers in Major US Cities Puerto Rico and Toronto, Canada

## John Guzik VIEWPOINT

by John Guzik

I noticed that last week the Print started putting my signature in the box that accompanies the articles I write. I'm very honored that they think I merit such treatment, and wish to express my sincere thanks, especially to their crack graphics man, Neil, who created the fine display.

I would like to speak personally to you today instead of indirectly as I have up until now. Then you'll have the sound of a voice to go along with my signature. But if I only present myself and don't even ask for your name, I might be considered rude. So when you get a chance, write your first name down on a piece of paper and drop it into the locked wooden box that is just inside the door of the Print office.

Of course, a number of you may have the same first name. Since I don't want to appear too brash and ask for your last name just yet, draw a simple picture of yourself on the paper. Then when I receive a paper with the name David, Egbert or Marcella, I'll see the difference between you and the other Davids, Egberts and Marcellas who dropped theirs in earlier.

Some of you think you're ugly, and may not want to draw a picture. That's a lot of horseradish. I think I'm ugly too, but probably not as much as I think I am. Go ahead and draw a picture. After you finish it, please answer the following question: What would the result be if you added up all the numbers in your phone number, added 602, multiplied by the number of people in your immediate family, subtracted your age, multiplied again by the number of chairs in your house, and added your street address? Record the result on the paper underneath your picture. When I did this, my paper came out like this: John, 37,180. I also drew the picture, but there's no space for it right now. I'll show it to you some other day.

Now, take a guess as to how many people you think will be dropping pieces of paper with the above information in my box. The person who comes the closest will receive a piece of chocolate cake from me. If he or she doesn't want the cake, they can have an entire lunch, or a brand new notebook from the bookstore. Write down your best guess somewhere on the piece of paper, and this will be the last thing I'll ask of you.

If you see that the number of papers I received, which I'll publish here on February 8, is close to the number you guessed, look at the first name that accompanies the announcement. If it's your name, go to a campus phone and call me at the Print. I'll identify you as the correct person when you tell me the number you arrived at in the calculation. At this point, the people present with me in the room when you call will give you a loud round of applause over the telephone, and I'll ask you if you want the cake, the lunch, or the notebook.

Some people might wonder why I'm doing this. Well, it's just a lark. I wanted to do to do something with the wooden box I've had sitting in my closet for seven years, and I needed to fill this space while I read over my Time magazines to get some new ideas for satirization.

If the door is closed and you can't get to the wooden box, you can drop your paper through the mail slot at any time and that'll be fine. The box is out right now, and will be, until this Friday at 3 p.m. (Jan 28). On February 8, I'll let you know how many people dropped papers off.

And to show you just how ugly you aren't--every one of you--I'll print the picture drawn by the person who guesses the closest to the actual number of papers. Thank you for your time. It was nice speaking to you personally.

## Northeastern Illinois Print

The editorial opinions expressed in the PRINT are the responsibility of their authors and are not necessarily those of the University, staff, faculty or Advisor. PRINT welcomes contributions from readers but reserves the right to reject any materials submitted for publication.

All materials submitted to the PRINT are the property of the newspaper and may not be returned, unless prior written permission to the contrary is obtained from the Editor. Letters to the Editor must be signed, but names will be withheld upon written request.

The PRINT offices are located on the lower level of the "E" Building, across from the gameroom in E-049.

#### Editorial Officials

Editor ..... Sandra Vahl  
Managing Editor .... Joe Wright  
Associate Editor .... Gary Byron  
Co-secretaries .. Barbara Zerega,  
Arthur Gilbert  
Campus New Editor Kevin Draftz  
Graphics Editor ..... Ray Hund

#### Photo Editor

..... Azra Puskar

#### Business Manager

..... Carole Heiman

#### Campus News Staff

Co-News Editors..... James Frell,

Mark Johnson

Features Editor ... Cynthia Theisz

Sports Editor .... Mark Johnson

Advisors ..... Charles Pastors

Shirley Tupper

#### General Staff

Cris DiMatteo

Lynn Levy

Kevin Geiger

Neil Wagner

Elizabeth Jensen

Doreen Budney

Libby Neiditch

Joyce Smith

Paul Nordhaus



## Part I in a series

# Everything you always wanted to know

The following story will perhaps answer your many questions about the vacant buildings of the south end of the U.N.I. campus. . .

by Sandra Lee Vahl

In the year 1899, Chicago made a big step in history by becoming the first city in the United States to establish a court system for juvenile delinquents. Prior to that time, juvenile delinquents were subject to the same court systems as adult offenders. Also at that time, the Forty-first General Assembly passed the Parental School Law which stated that, for every city which had a population of 500,000 or more, a school had to be established to house the truant and/or incorrigible juveniles of that city. The law made it mandatory for the Chicago Board of Education to erect a Parental School during 1901.

In response to that law, the Board of Education sent investigators to visit other reform and industrial systems which were popping up throughout the country, to get a better understanding of how a parental school was run. Once it received the reports from the board members, the Board of Education selected a site for the school on October 17, 1900. Forty acres of an area known as Bowmanville were selected for the school (the area is now more familiarly known as Hollywood Park, and the site itself is now known as St. Louis Avenue). In September of 1901, ten more acres were purchased, and in January of 1902, the school opened its doors to thirteen boys. In the first few years of its existence, the Chicago Parental School became very well known as one of the most important experiments in reformatory methods.

At the time of its opening, the school consisted of one cottage to house the boys; the main school building, which opened in May of 1902, was still under construction. Between the months of November 1902 and December 1903, the Superintendent's cottage was completed; a second cottage was erected; and an ice house, vegetable cellar, small hospital and a barn were built. Other appendages to the school during its early years were a farm cottage, a third housing cottage, a swimming pool, an assembly hall, a greenhouse and playgrounds for each of the three residential cottages. According to annual reports on the school, it was considered the best equipped reform school

(particularly in comparison with the few others scattered around the country).

The main objective of the Chicago Parental School

was to reform the truant and incorrigible habits of the children it housed. The school provided a "home away from home" for the

boys, in which the favorable environment helped them to learn habits which would lead to normal, wholesome self-development. This made

it easier for them to return to their former school backgrounds when the time came for their release from Parental. A counselling and guidance approach was also used to help the children adjust to the society in which they lived.

When a child was sent to the Parental School from a juvenile court, he was first registered with the Superintendent's secretary. He was then introduced to the Superintendent, who would ask questions which pertained to the pupil's interests and maturity level. Then, the boy would be sent to the Receiving Cottage where he remained for approximately two days. In the Receiving Cottage, which contained books, games, radios, and other paraphernalia, the pupil was examined by the school nurse, as well as having things about the school explained to him so that he could adjust more smoothly to his new home.

After the Receiving Cottage, the pupil was sent to the Adjustment Teacher's Office to fill out forms pertaining to entrance, interests and health. After testing the pupil to determine where he stood as far as school work is concerned, he was then assigned to a classroom and from there he went to his assigned cottage.

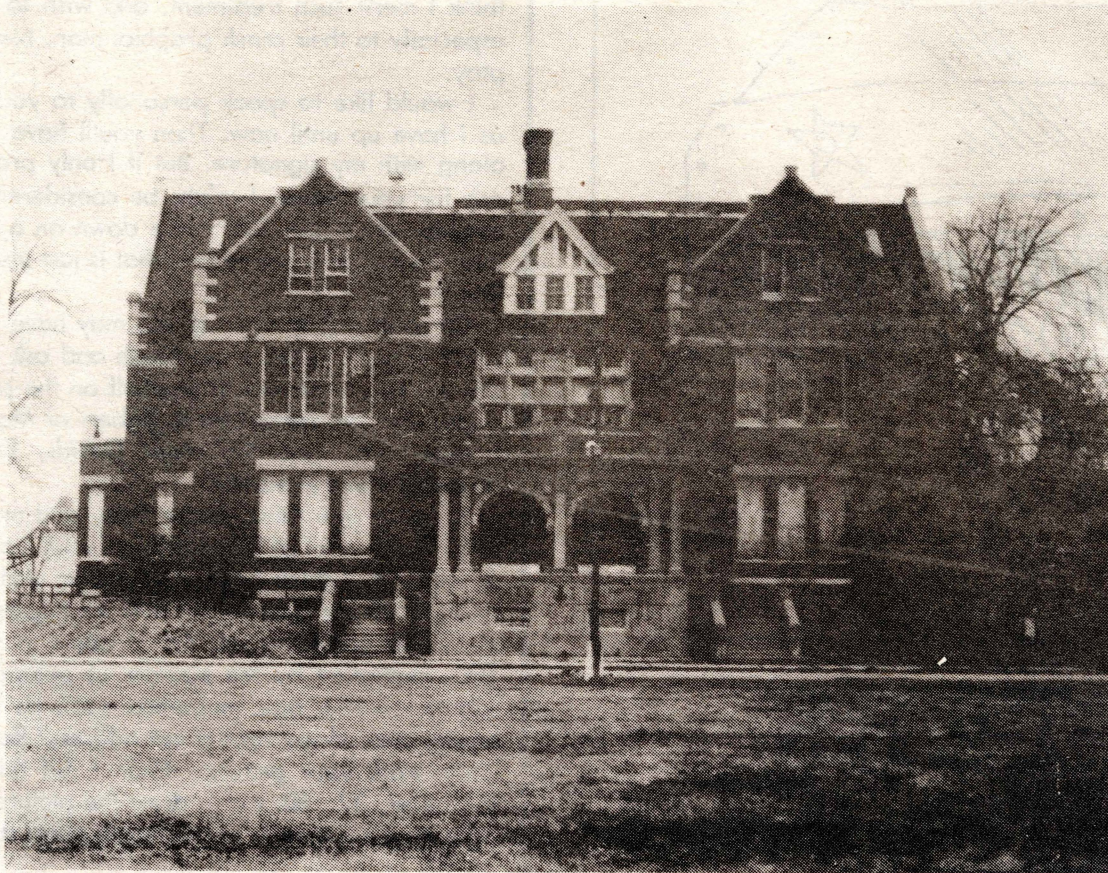
Until approximately 1923, the system of discipline imposed on the boys was that of a military nature. Drills, uniforms, strict obedience and cooperation were all part of an intense military training at the Parental School.

The system of teaching was basically the same as that of the public school system, but the Strathmore Arithmetic Plan was used in an attempt to meet the different rates of learning which existed among the pupils.

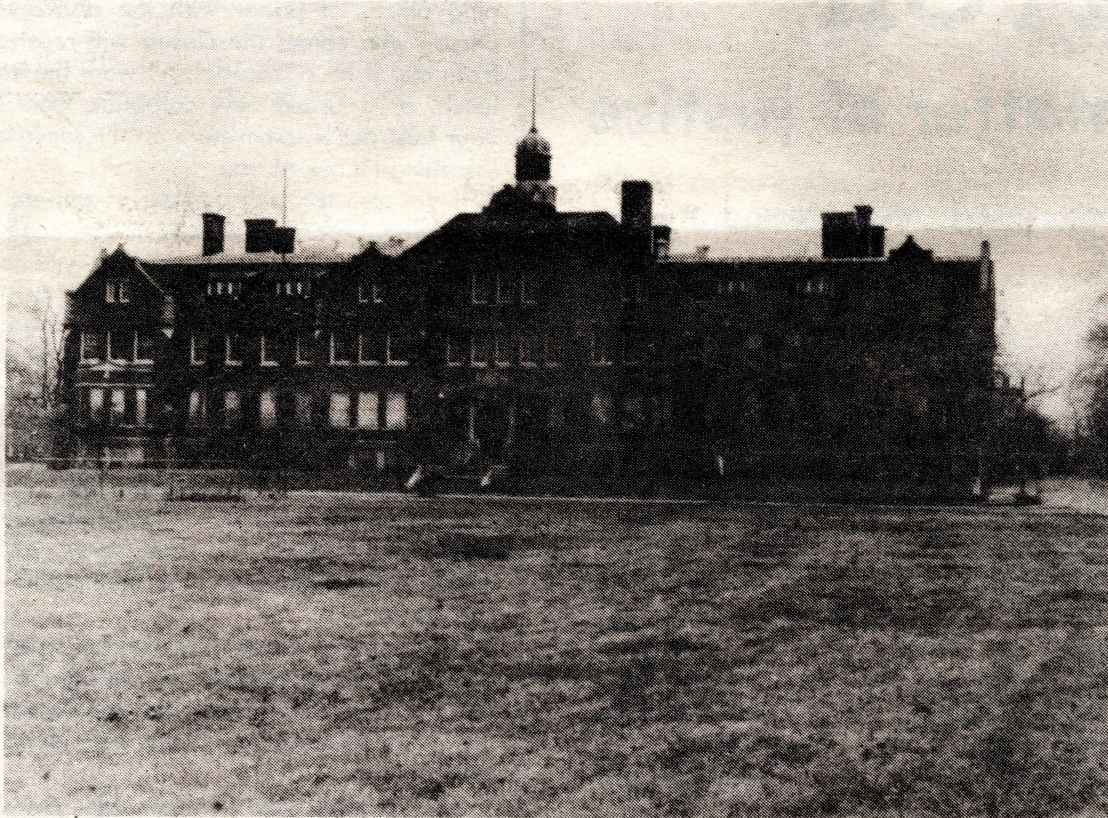
Other activities and aspects of the school included weekly assembly programs; health services; religious education (two chaplains and Sunday school teachers); libraries; a student council; a school newspaper (The Skipper); shops dealing with carpentry, printing, electrical work, sheet metal work and shoe repairing; and at a later date, Boy Scouts.

The cottages provided for the boys could accommodate up to thirty-five individuals including the cottage mother and fathers, called Family Instructors. The upkeep of each cottage was the responsibility of the cottage parents and the pupils who inhabited it. Each cottage had its own gameroom, study room, and

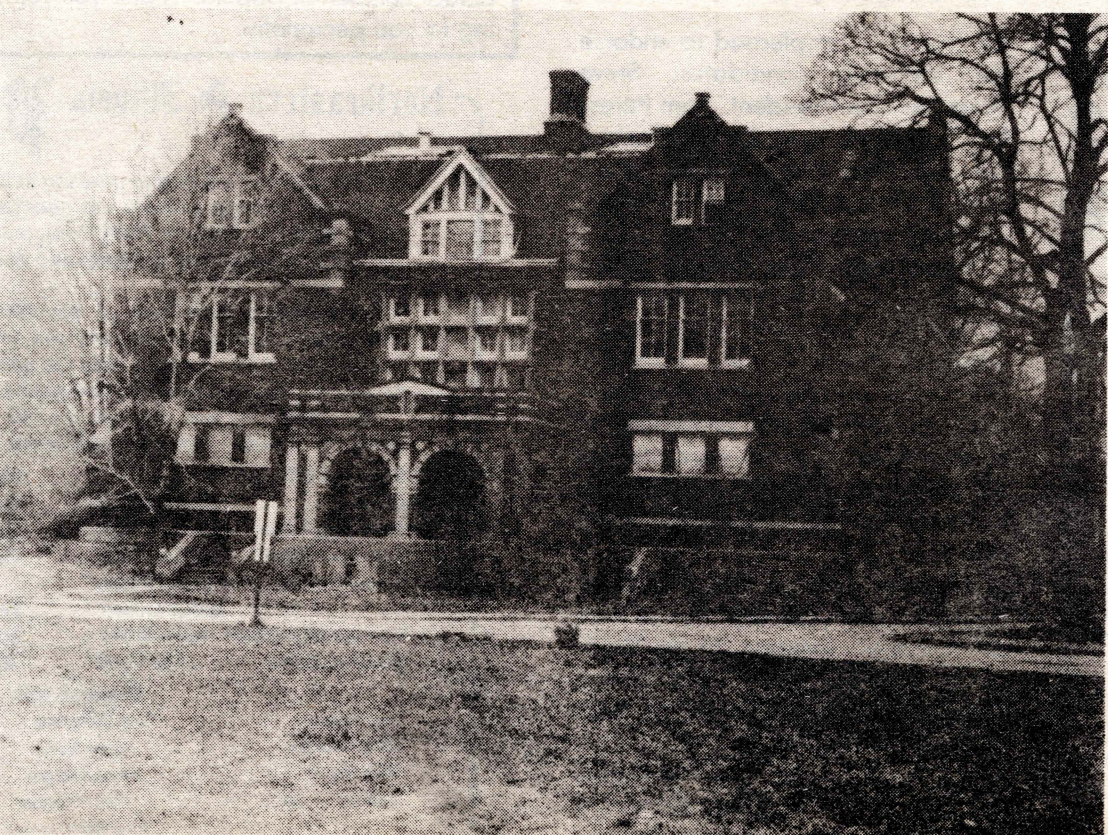
(Continued on page 7)



Cottages 'H' and 'B' of the Chicago Parental School. (Photo by Steve Goldenberg)



Main Building (classrooms) of the school. (Photo by Steve Goldenberg)



Cottages 'A' and 'G' of the Chicago Parental School. (Photo by Steve Goldenberg)



# about 'those buildings' and more. . . .

dining room along with its own dormitory. Meals were prepared in the central kitchen and were picked up by the boys to bring back

to the cottages. Each boy had a cart to pick up the food, and they used the underground tunnels which connected all of the build-

ings for this purpose.

The network of tunnels was also used by the pupils to travel from classroom building to cottage without

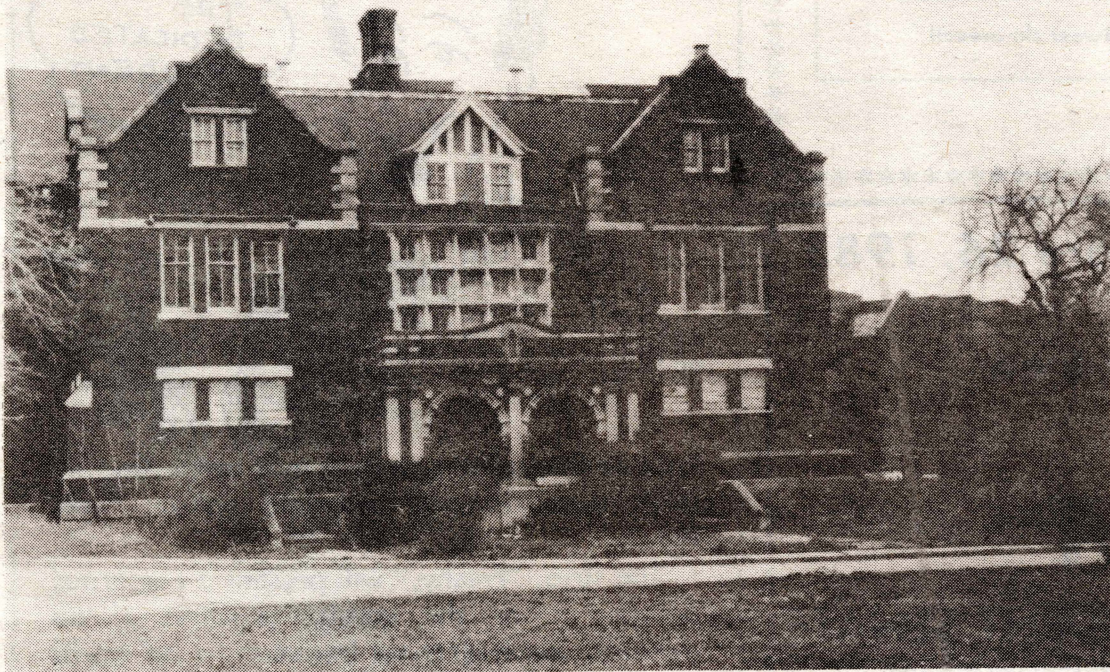
ever having to go outside. This was especially handy in the cold winter months.

The children arose each morning at 7 a.m., made their beds and prepared for school. Their classes began at 9:00 and continued until 12:00, at which time the pupils returned to their cottages for lunch. Classes resumed at 1:30 and continued until 3:30, after which the pupils were free to engage in recreational activities. Dinner was served at 5:00, a one-hour library period was provided after dinner, a recreation period after study, and then retirement at 8:00 p.m. Visiting hours for parents were every Sunday, from 1:30 until 4:30.

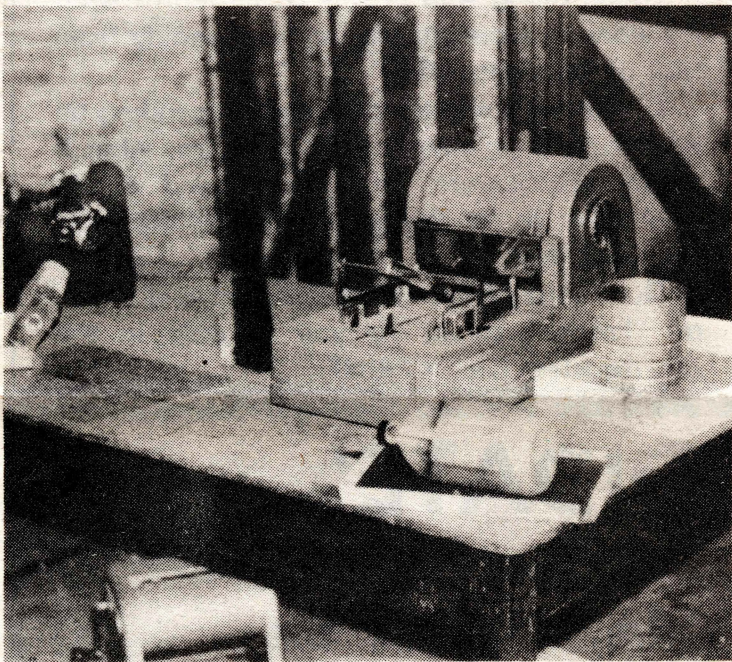
In 1919, a Parental School for girls was established at Rosehill

School, 6020 N. Clark St. The school was an extension of the Chicago Parental School, and was supervised by the superintendent of the boys' appendix. In 1925, the girls were transferred from Clark to the Chicago Parental School, in which they were provided with a cottage and various activities which pertained to their interests rather than the boys. In 1948, the girls division was closed by Judge Dunne of the Juvenile Court, and the girls who were truant or delinquent, were sent to the Geneva School for Girls.

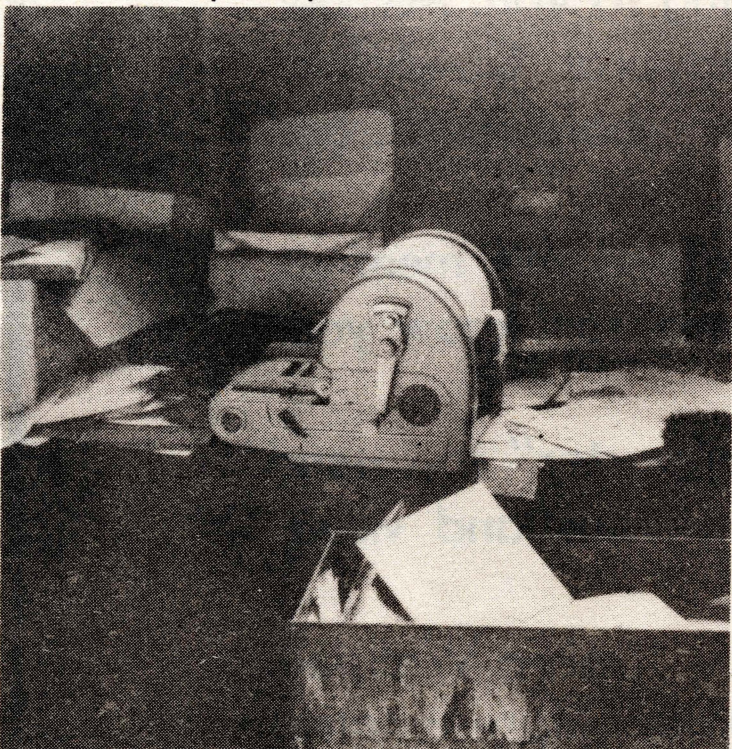
Next week: A look at the Parental School during World War II-- Northeastern's involvement, and the future of the buildings . . .



Cottages 'D', 'C' and 'E' of the Chicago Parental School. (Photo by Steve Goldenberg)



A few pieces of the large amount of equipment remaining in the school. These (above and below) machines were found in what's left of the print shop.



## De-Baptism Certificate

Send \$5.00 to  
American Atheists  
P O Box 2117  
Austin, TX 78768-2117

## SATISFACTION GUARANTEED OR YOUR GOD BACK Information Packet

Send \$1.00 to  
American Atheists  
P. O. Box 2117  
Austin, TX 78768-2117



## TRENDSETTERS international

HAIR DESIGNERS FOR MEN AND WOMEN!

"we're the  
**PERM  
PEOPLE**"

OPEN 7 DAYS - 5 NIGHTS  
**725-6200**

AND MORE!  
• SUNTAN SALON  
• BODY WRAPPING  
• FACIAL AND SKIN CARE  
• WAXING • MASSAGE  
• SCULPTURED NAILS  
• MAKE-UP LESSONS

4100n.Cicero  
**FREE PARKING**

**\$5 OFF Any Haircut  
OR  
\$10 OFF Full  
Perm Service  
With This Ad**

## VOTE FOR EXPERIENCE AND PROVEN ACCOMPLISHMENTS

ELECT \*\*\*

TOM

**JOSEPH** /

**PRESIDENT  
STUDENT SENATE**

RON

**KLINER** /

**VICE-PRESIDENT**

JEFF

**JACOBSON** /

**TREASURER**

JAMIE

**GREEN** /

**SECRETARY**

Vote in the Village Square (by the Book Nook)  
Tues. & Wed., Jan. 25th & 26th, 1983 11 9 a.m. to 7 p.m.  
Bring an I.D.

PLEASE elect this "team" to ensure that what we have,  
continues to **work - for you!**  
**THANK YOU**



\*\*\*\*\*

THE UNI SKI CLUB IS GOING  
SKIING!!

Indianhead/Whitecap Mountain  
March 10-13, 1983  
Deposit due Feb. 4, 1983

Trip includes: transportation, lodging, banquet meal, and lift tickets.

All Ski Club members receive free discount  
coupons for major midwest ski areas!!

Meetings Thursday 12:30, CLS 3005

\*\*\*\*\*

INTRODUCING

FRESHY

BY GARY BYRON



TM

Premiering next week: A new comic strip by staff cartoonist and associate editor, Gary Byron.

The strip, "Freshy," will present a humorous perspective on the various pratfalls of an average, newly-entered freshman to the world of college life.

Laugh along with Freshy as he learns what it means to separate the world of reality from that of "Studentworld."

Cry along with him (or laugh, depending on how sadistic your are) when he learns what it means not to refer to a 586 pound varsity linebacker as Mt. Rushmore (at least not while he's listening).

Don't miss all the fun, beginning next week, as "Freshy" comes to you -- only in the Northeastern Illinois PRINT.

January 25, 1983

January 26, 1983

\*\*\*\*\* VOTE \*\*\*\*\*

Mary <b>CONNELLY</b> For STUDENT SENATE -- PRESIDENT--	Steve <b>WEST</b> FOR STUDENT SENATE --VICE PRESIDENT--
Sam <b>PERESS</b> FOR STUDENT SENATE --TREASURER--	Dave <b>DOEHLER</b> FOR STUDENT SENATE --SECRETARY--

'KNOW YOUR CANDIDATE'


On Tuesday, January 25 at 12:30 p.m. there will be a meeting held in the Commuter Center, Rm. 214, for the entire student body of UNI.

We have made great effort in bringing to you, Michael Scott, the campaign manager of Mayoral Candidate, Richard Daley, to speak to the students, share ideas, and listen to opinions and answer questions.

We hope that many students will attend this meeting, for it is in the best interest of everyone to "know your candidates."

You do not have to be a "Daley supporter" to attend this meeting. We will welcome all opinions and views.

Hope to see you there.

**Richard Daley**

It's time for Leadership

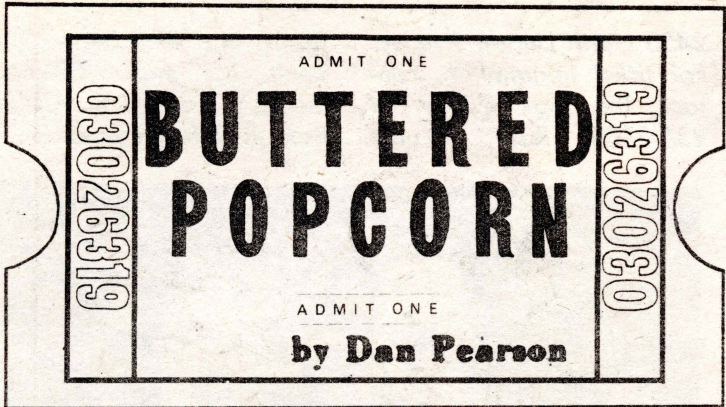
Debra Wallsley,  
Daley Representative

Tuesday, Jan. 25, 1983  
12:30  
CC 214

(Sponsored by the UNI Senate)



# Gandhi's words flow through Kingsley



Richard Attenborough, the British actor-producer-director and knight of the realm, must enjoy making long movies. Of the five films he has directed since his acclaimed 1969 anti-war film debut, *Oh! What a Lovely War*, four have been well over the two hour mark and his latest, *Ghandi*, clocks in at just over three hours in length--with a fifteen minute intermission added to sell popcorn and so that audience members may stretch various musculature.

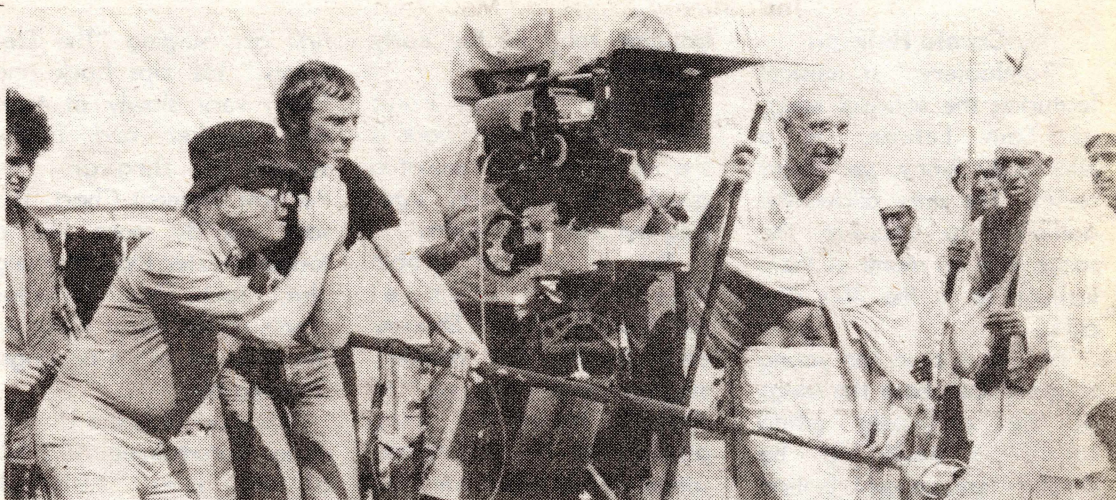
It is time put to good use. Attenborough has an intensely personal stake in the making of this picture that goes back twenty years to a meeting with an Indian gentleman who inspired him to spread knowledge of the Mahatma throughout the world.

It is significant that while this film features one of those proverbial casts of thousands, its primary source of power derives from the casting of a single

individual, Ben Kingsley. This part Indian, part English member of the Royal Shakespeare Company, who was born Krishna Bhanji in 1943, generates a mesmerizing performance that is the heart and soul of the picture.

Kingsley, with the aid of the most diligent make-up crew, recreates fifty-six of the seventy-nine years in the life of Mohandas K. Gandhi with an almost frightening sense of accuracy. To a generation that knows this remarkable human being only through newsreel footage and history books, Kingsley's portrayal is a cinematic reincarnation of the first magnitude.

He inspires, through plain talk and simple gestures, a way out of the madness, the hate and the confusion that colors this century. When one looks into the guileless eyes of Ben Kingsley in his role of the Mahatma "The Great Soul," one can believe that there is a better way.



Richard Attenborough (left) directs Ben Kingsley, the star of "GANDHI."

One can even excuse this Columbia Pictures presentation for being touted as a "world event," with all the enthusiasm of a moon landing or a unilateral nuclear disarmament agreement. There is an overwhelming message of peace and brotherhood that has been ignored throughout the globe, and even in the country of the subject of the film.

A bit of cheerleading for the correct principles should be encouraged.

Through his directorial career, Attenborough has chosen primarily subjects that point out the folly of aggression or great historical personalities, such as *Young Winston* (1972), *A Bridge Too Far* (1977), and *Magic* (1978). His direction, while competent, is never out of the ordinary. In *Gandhi*, he tends to be perfectly comfortable re-

maining in the background, allowing his subject to shine.

He has peopled the cast with a sprinkling of recognizable British actors in small but illuminating roles; Edward Fox as a ramrod general with the mind of a block of ice particularly stands out. Americans like Candice Bergen and Martin Sheen also contribute in brief but important roles that do more than advance the storyline.

*Gandhi* treats its audience to a story of the man behind the myth. A man who married at the age of

thirteen, became a lawyer, courageously fought injustice in South Africa and in his homeland, and won a major victory over an outdated colonial system through persistence, non-aggression and the aid of the world press.

Richard Attenborough has done well in bringing us the realities of a shrewd and committed human being whose political assassination seems all the more tragic today than it was thirty four years ago.

The rating for *Gandhi* is three stars.



Ben Kingsley stars in the title role of the beloved spiritual and political leader, and Candice Bergen plays Margaret Bourke-White, the famous LIFE magazine photographer.

## DAYTONA BEACH FLORIDA

Enjoy Spring Vacation on the World's Most Famous Beach!  
"Free Beer & Mixers Enroute!" "Quad Occupancy."

- EIGHT SUN-FILLED DAYS AND SEVEN EXCITING NIGHTS ON THE BEAUTIFUL DAYTONA BEACH COASTLINE.
- HOTEL ACCOMMODATIONS AT THE "MAYAN INN" DIRECTLY ON THE OCEAN.
- ALL ROOMS HAVE THEIR OWN PRIVATE BALCONYS OVERLOOKING THE OCEAN COLOR TELEVISIONS, AIR CONDITIONING AND MUCH MORE...
- THE MAYAN INN ALSO HAS ITS OWN COCKTAIL LOUNGE, RESTAURANT WITH A MENU TO PLEASE ALL, A GAME ROOM AND AN EXCITING LOUNGE FOR DANCING
- LARGE SWIMMING POOL COMPLETE WITH SUN DECK, CHAIRS, HIGH DIVE, AND POOLSIDE BAR..
- TRIPLE AND DOUBLE OCCUPANCY ARE AVAILABLE UPON REQUEST
- EACH ROOM HAS RUCE LOUBLE BEDS, AND EASY AVAILABILITY OF KITCHENETTES..
- THE MAYAN INN IS LOCATED A BLOCK FROM THE FAMOUS DAYTONA BEACH BOARDWALK, THE FIER AND THE WORLD FAMOUS "BIG DADDY'S" LOUNGE...

DEAR STUDENTS WE WILL BE TRAVELING WITH A REPUTABLE BUSLINE (RAILWAYS) AND STAYING AT ONE OF THE MOST REQUESTED HOTELS. (MAYAN INN)

DEPARTURE DATE IS APRIL 22, YOU WILL ARRIVE IN DAYTONA BEACH THE

FOLLOWING DAY, AND RETURN HOME ON SUNDAY MAY 1, "DONT MISS OUT ON THE FUN"

**Don't Be Fooled with A lower Price You Get what you pay for.**

**Don't Be Left Out In The Cold..**

**Reserve Your Seat Now!!**

Mr. Peter Varga or:

CONTACT:

**DEBBIE**

OCEAN TRAVEL  
348-5700

M-Sat.  
9:00 A.M.  
5:00 P.M.

50.00 deposit required  
as soon as possible.....



Travel with experience!!

SEA WORLD! View sea lions, dolphins and a killer whale!

## ROLL 'EM Productions



## RAGTIME

JAN. 26, 7:00pm  
auditorium  
free with ID



# 'Tomfoolery' is hilariously funny

by Carole Heiman

"Tomfoolery," a musical featuring the satirical songs of Tom Lehrer, is a hilariously funny, yet smart review. The show allows the audience to visualize the songs that so many of them listened to in the 50's and 60's.

For those of us too young to reminisce about the songs of the extremely gifted satirist, a small bio: he shared "enormously limited popularity," as one of the starring characters puts it, among many right-thinking liberals in the 1950's and 60's.

Even if you are too young to remember the work of Lehrer, you are not too late to enjoy it. The play is scheduled for a six-week run at the Apollo Theater Center. If you don't remember many songs, you'll certainly remember "Silent E," a song Lehrer wrote for public television's Electric Company. And of course, "Pollution," the ever-so-

popular song of the early Seventies.

Perhaps the most ironic thing about Lehrer's work is the words, written almost a quarter of a century ago, ring out true, even today.

The entire cast (Robin Nicholas, Michael McCormick, Jack Shearer and Deirdre Van Winkle), singing and dancing to "Who's Next?" a song about "the bomb," hardly seems out of place even today. Nicholas' adaptation of "I Got It From Agnes" (even if he never **REALLY** tells us just **what** it is he got from Agnes), probably has never been as true as it is today. Shearer pays tribute to the old California politician, George Murphy, in the song of the same name. Change the name, and the song would still be true in 1982.

The star, however, is Nicholas, who demonstrates a wonderful talent in the

first act, singing "The Elements." He zips back and forth, very slowly at first, then quicker and finally speedily, through the Periodic Element Chart. The song sounds more like a tongue-twister than anything else, and that Nicholas points to the exact spots on the chart of which he sings, is incredible.

The musical revue is well-done, entertaining and full of memories. Although Lehrer's humor sometimes slows, such as the number "Oedipus Rex," during which Van Winkle dons an all too slinky dress, it always bounces back. "Tomfoolery" is definitely a "must" for the new year, for it shows us all that, no matter how different things may be, no matter how much time passes by us, things always seem to stay the same.

"Tomfoolery" is at the Apollo Theater Center,

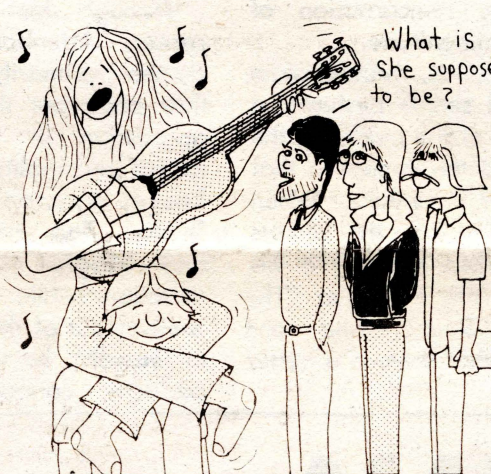
2450 North Lincoln Avenue. For ticket information, contact the box office at 935-6100. Rose discount

tickets are available to students for many Chicago theaters. Contact the CCAB Box office for information.



Michael McCormick, Deirdre VanWinkle (lower row, left to right), Robin Nicholas and Jack Shearer (top row) in a scene called "Be Prepared" from TOMFOOLERY.

## HACKBUTS



## WOMEN AND ATHEISM

By Madalyn Murray O'Hair

Send \$3.00 to  
American Atheists  
P. O. Box 2117  
Austin, TX 78768-2117

## Keep your health during the winter months

As pretty as Chicago's first snowfall may be, don't let its beauty deceive you.

This winter, take precaution when shoveling--the job can be hazardous to your

health.

The Chicago Heart Association encourages all individuals with a history of heart disease to obtain their doctor's approval before shoveling snow.

"Snow looks light and airy, but is actually quite heavy. In fact, the wetter the snow, the harder it is to life. Even healthy people not used to regular physical activity can quickly overdo it and place undue strain on their hearts," say Dr. Michael Lesch, Chicago Heart Association president.

Lesch added that the blood vessels in the skin and tissues immediately underlying the skin, particularly in exposed areas, constrict in cold weather and cause the heart to work harder to pump blood.

"If you must shovel snow, don't hurry. Do the job slowly & rest often. Several short periods with rests in between will help you get the job done with less strain on the heart," Lesch added.

The Chicago Heart Association suggests following

these guidelines before hauling out the shovel:

- Dress properly and cover exposed areas, such as hands, neck, head and face.

- Wear layers of light clothing so that some may be removed if you become overheated while shoveling. Wearing layered clothing also provides better insulation against the cold weather.

- Push snow out of the way because it is less strenuous. When lifting or throwing snow lift only small amounts. Lift from your legs, using your entire body, not just your arms and back.

- Don't smoke or drink alcohol while shoveling snow. Alcohol can give a false sense of energy which may lead to overexertion. Smoking and cold both constrict blood vessels and can become a dangerous combination during unaccustomed heavy labor.

- Avoid shoveling im-

mediately after meals. Shovel snow before eating or at least one or two hours afterwards.

In addition, Lesch stressed that everyone should be alerted to the warning signs of a heart attack. They include prolonged heavy pressure or a squeezing pain in the center of the chest and/or pain that may spread to the shoulder, arm, neck or jaw. Dizziness, fainting, sweating, palpitations, nausea or shortness of breath may also occur. The symptoms may come and go.

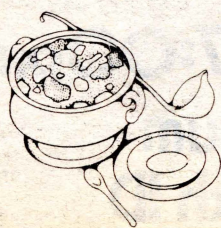
If these symptoms persist for more than five minutes after you have stopped shoveling snow, seek emergency help immediately. Avoid the tendency to deny these warning signs. Minutes count when a heart attack strikes.

This year before shoveling snow, remember to dress properly and work slowly. Better yet, ask a teenager to do the job for you.

Did you know the  
HERITAGE ROOM is open daily  
from 11:30 to 1:30 for lunch ?

Come in and enjoy our  
lush unlimited Salad Bar;  
dip into our bottomless  
Soup Crock; see if you  
can decide between our  
two daily entrees.

What a nice way to spend  
your lunch hour.







# NORTHEASTERN SPORTS

## Basketball teams on winning streak! Men win three - gain Darrel Space

The Northeastern Illinois University men's basketball team won three games last week. The wins give Northeastern a four-game winning streak and an overall record of six wins and 13 losses. The Golden Eagles also won their season Chicagoland Collegiate Athletic Conference opener to give them a record of one win and no losses in conference play.

On January 4 Northeastern defeated the Illinois Institute of Technology 81 to 63 on the Eagles' home floor. Northeastern jumped out to

an early lead and led by 10 points at halftime 40 to 30. In the second half I.I.T. came back and led 56 to 55 with eight minutes to play in the game. Northeastern out-scored its opponents 26 to 7 in the final minutes to win the game. Northeastern out-shot its opponents 47.2 percent to 37.5 percent and out-rebounded them 46 to 40. Dennis Smith scored 19 points to lead the Eagles in scoring. Smith also pulled down 11 rebounds. Darrell Space, playing his first game for the Eagles, scored 18 points and led the team with 12 rebounds. Alvin

Bibbs added 14 points and 10 rebounds.

On January 7 Northeastern hosted the University of Wisconsin-Parkside, defeating them 62-56. The Eagles fell behind early and trailed 20 to 9 after 10 minutes. Northeastern fought back and trailed at halftime 31 to 30. The second half remained close throughout with the Eagles finally pulling away with an effective half-court trap. Pete

Shepherd and Space were the leading scorers for the Eagles with 12 points apiece. Space led all players with 17 rebounds.

On January 8 Northeastern traveled to the Northwest Armory and defeated Roosevelt University 85 to 74 in a C.C.A.C. battle. The first half was close throughout with the Eagles leading at halftime 36 to 35. In the second half the lead seesawed with Roosevelt leading by one

point with four minutes to play. Northeastern used its half-court trap to gain back the lead and never trailed again. Anthony Sturdivant led the Eagles in scoring with 17 points. Bibbs scored 16 points. Shepherd added 16 points, Space had 15 points and 15 rebounds, and Lamar Springs added 12 points in the Eagles well rounded attack. Northeastern shot well from the field, out-shooting its opponents 46.7 percent to 37.5 percent.

## Women win two

The Northeastern Illinois University women's basketball team won two games last week to give them an overall record of five wins and 10 losses.

The Eagles defeated Concordia College 72 to 52 in the Eagles' home gym on January 4. Northeastern led throughout the game and had a 16-point lead at halftime. Northeastern was

led in scoring by Laura Fanning with 25 points. Kandy Crosby added 20 points for the winners.

On January 5 Northeastern hosted North Park College and defeated North Park 73 to 44. Northeastern gained the lead early and never relinquished it. Crosby led the Eagles in scoring with 25 points and in rebounding with 15 boards.

## Health Service sponsors Quit-Smoking Clinic

In an effort to remind the public about the health hazards of smoking, the National Interagency Council on Smoking and Health has designated the second week of January as National Education Week on Smoking.

The weeklong observance commemorated the 19th anniversary of the first surgeon general's report on the health consequences of

smoking. The report was submitted to Congress on January 11, 1964.

The initial surgeon general's report on smoking resulted from joint concerns expressed by the presidents of the American Cancer Society, American Heart Association, American Public Health Association, Inc. and the National Tuberculosis Association.

To help smokers who

WANT to quit, UNI Health Service is sponsoring a 5-DAY QUIT SMOKING CLINIC from January 25 through January 31 from 12:30-1:45 p.m. If you want to be a "quitter," sign up for these sessions in Health Service, G-138. A \$5 deposit is required. At the end of each session you will be refunded \$1. Attend all sessions and earn back your \$5. For information call ext. 354.

firmed by a positive culture, a minimum of ten days of antibiotic treatment is necessary. Only a doctor can write a prescription for these medications. Health Service will provide the written laboratory results to the patient who can then take it to a doctor for a prescription.

Join  
the  
PRINT

## Deep Throat vs. Strep Throat

We used this title to lure you into reading what follows; because it's important right now.

The Chicago Board of Health tells us that the incidence of strep sore throat has doubled this fall. Health Service has found that the incidence has increased five times this November over last year at the same time.

A strep infection is recognized as dangerous since it may lead to serious complications, such as acute

rheumatic fever or acute glomerular nephritis (kidney disease).

The symptoms are sore throat, headache, fever and sometimes abdominal pain, nausea or vomiting. Early diagnosis is essential. An examination and throat culture will tell if you have a simple sore throat or a dangerous infection. This culture is done FREE in Health Service, Room G-138. No appointment is necessary.

If a strep throat is con-

## Classifieds

Students .10/line  
Others .30/line

FOR SALE: Designer Income Tax Forms. The FTIP 1040A is now available to all interested taxpayers. Interested? See Steve in front of the CCAB Box Office from 4-6 p.m. today and tomorrow.

### Typing Services

Writing Assignment? Save hassles. Former university English teacher will guide you through the rough spots in planning, organizing, writing, typing your paper. Affordable rates - near campus. 583-6044.

### Personals

To all single and pretty girls here at UNI:

If J.A. asks you to go to Naperville via 294 South Tollway - DON'T - His boyfriend lives out there. (He's very jealous).

From two girls who did

Jacy Avakian:

Next time you may not be so lucky. I was shocked to see you "Dressed up."

Please for your own sake, (and reputation) keep it in

the closet. (Or the Bughouse, see you there.)

A Friend

Jesse,  
Keep your hand and everything else off!!

Jeff

Dear Debbie,  
We know! The man behind the counter is smiling!!

George's twofer outers

C.G.  
T.J.'s in the running, the question is... For what is he running?

C.M.

### INTERESTED?

The Brothers of Sigma Alpha Mu Fraternity at the University of Illinois (Chicago), would like to invite you to their Rush Party for Winter '83. There is a cover charge of three dollars at the door. There will be music, dancing and PLENTY OF BEVERAGES. Also, you must have a college I.D. to enter. There will be no exceptions! It takes place Saturday, Jan. 29th at the "Gelden Swan," 5142 W. Belmont, at 8 p.m.

Hope to see you!  
Carlos Cortes,  
President

### Job Offer

Get \$100-\$400 working at home stuffing envelopes during free time. For free information call Ishmael; 235-9246; weekdays 2-9 p.m.

### For Rent

Spacious 6 room apartment. First floor. Hollywood Park. 3 bedrooms. \$500/month, heat included. Available February 1st. Call 583-1246 or 583-5900.

ECKANKAR, a universal teaching, is releasing to the public in book form, The ECKYNARI, The Secret Knowledge of Dreams. For more info call your local ECK center. Taped message-227-5666 or 973-6677.

### Wanted

Used anthropology books, cheap, prefer physical or primate. Call 736-1053.

### Typing Services

Typing. Fast, accurate and reasonable. Call Pat (English major) ext. 771 on campus.

Writing a paper? Save time, raise grades. Professional writer/English teacher will help you organize, correct and type a superior product. Call Jean at 583-6044.

Typing teacher and experienced typist with a speed of 110 w.p.m. is looking to type term papers, resumes, etc. Conveniently located near school. Call Barbara at 784-3454.

### Help Wanted

Help Wanted--P/T driver with van. Pro Sports 583-8214.

### Ring Sale

Josten's Ring Sale - January 24th thru 28th.



D. NIKOLAOU  
OWNER • OPERATOR

Hours:  
7 a.m. - 11 p.m. - Monday - Friday  
8 a.m. - 8 p.m. - Saturday  
9 a.m. - 5 p.m. - Sunday

PHONE: (312) 463-4411

3426 W. BRYN MAWR

D & E AUTO SERVICE

ROAD SERVICE  
EXPERT AUTO REPAIR  
BRAKES • MUFFLERS • SHOCKS  
MECHANICAL AND ELECTRIC REPAIR  
SUN TUNE - UP  
ALL WORK GUARANTEED



# DOES GOD REALLY EXIST?

## ARE YOU A CLOSET ATHEIST?

The answer may lie in the following text:

### The Bible

And the children of Israel took all of the women of Midian captives, and their little ones, and took the spoil of all their cattle, and all their flocks, and all their goods.

And they burnt all their cities wherein they dwelt, and all their goodly castles, with fire.

And they took all the spoil, and all the prey, both of men and of beasts.

And they brought (them) unto mozes and eleazer the priest...

And mozes was wroth with the officers of the host,

with the captains over thousands, and captains over hundreds, which came from battle.

And mozes said unto them, "Have ye saved all the women alive?"

"Behold, these caused the children of Israel, through the counsel of balaam, to commit trespass against the lord in the matter of peor, and there was a plague among the congregation of the lord.

"Now therefore kill every male among the little ones, and kill every woman that hath known man by lying with him.

"But all the women children, that have not known a

man by lying with him, keep alive for yourselves."

numbers 31: 9-10

Here is the alleged "prince of peace" speaking:

"Think not that I am come to send peace on earth: I come not to send peace, but a sword."

matthew 10:34

"If any man come unto me, and hate not his father, and mother, and wife, and children, and brethren, and sisters, yea, and his own life also, he cannot be my disciple."

luke 14:26

"If you feel fine after reading the above, if you are not bothered, if you can swallow that, then you are not a closet atheist. God will take care of your. Only, please do not pray for the Philosophical Society. We are responsible for

ourselves. If you feel irritated, however, then you have the "bug," the atheist bug. The Society can help you develop that bug. You will find that criticizing God, a step by step process, is a lot of fun. More than that, godlessness is beautiful.

## UNI PHILOSOPHICAL SOCIETY

Presents

## A SERIES ON ATHEISM

Dr Chacon: "Annihilation of Agnosticism"

Tuesday, January 25, 8 p.m. - 9:45 p.m., in CC-214

Dr. Lattie: "Is Faith Necessary For Mental Health?"

Tuesday, February 1, 8 p.m. - 9:45 p.m., in CC-214

Dr. Moorhead: "The Problem of Evil"

Tuesday, February 8, 8 p.m. - 9:45 p.m., in CC-218

Dr. Moreno: "Anthropological Perspectives on Religion"

Tuesday, March 8, 8 p.m. - 9:45 p.m., in CC-214

Dr. Rizik: "Debate with a Theist"

Tuesday, March 15, 8 p.m. - 9:45 p.m., in CC-214

Dr Chacon: "Atheism Revisited"

Tuesday, March 22, 8 p.m. - 9:45 p.m., in CC-218

Club Members: "13th Annual National American Atheist 1983 Convention"

April 1 - 3, San Francisco, Aalifornia (The San Franciscan Hotel)



COME OUT OF THE CLOSET!

ATTEND 5 EVENTS AND WIN AN ANTIGOD BUTTON!

PARTICIPATE IN ALL 6 EVENTS AND RECEIVE A PHILOSOPHICAL SOCIETY ANTICHRIST 14" x 22" POSTER FOR HANGING OVER YOUR BED OR MANTELPIECE!

### NOTE:

All Society events are open to everyone. The reasons for the Atheism theme this semester are the lack of Atheism at Northeastern, the success of last semester's Atheism event,

and the fact that this club has attracted Atheists while the religious clubs catch all the Theists.